



Pioneer Energy Services

Dual Induction Log

API No.	15-179-21,358-00-00		
Company	Pioneer Oil Company, Inc.		
Well	Leroy Shaw No. 1		
Field			
County	Sheridan	State	Kansas
Location	2,228' FSL & 2,099' FWL		
Sec: 33	Twp: 8S	Rge: 28W	
Permanent Datum	Ground Level	Elevation 2698	Other Services CNL/CDL MEL/BHCS
Log Measured From	Kelly Bushing	5 Ft. Above Perm. Datum	K.B. 2703
Drilling Measured From	Kelly Bushing		D.F. G.I.L. 2698

Date	11/20/2014
Run Number	One
Depth Driller	4120
Depth Logger	4120
Bottom Logged Interval	4119
Top Log Interval	200
Casing Driller	8.625 @ 220
Casing Logger	216
Bit Size	7.875
Type Fluid in Hole	Chemical
Salinity, ppm CL	2000
Density / Viscosity	8.9 82
pH / Fluid Loss	11.0 5.6
Source of Sample	Flowline
Rm @ Meas. Temp	.75 @ 54
Rmf @ Meas. Temp	.56 @ 54
Rmc @ Meas. Temp	1.01 @ 54
Source of Rmf / Rmc	Charts
Rm @ BHT	.35 @ 117
Operating Rig Time	4 1/2 Hours
Max Rec. Temp. F	117
Equipment Number	108
Location	Hays
Recorded By	J. Long
Witnessed By	Jim Musgrove

<<< Fold Here >>>

All interpretations are opinions based on inferences from electrical or other measurements and we cannot and do not guarantee the accuracy or correctness of any interpretation, and we shall not, except in the case of gross or willful negligence on our part, be liable or responsible for any loss, costs, damages, or expenses incurred or sustained by anyone resulting from any interpretation made by any of our officers, agents or employees. These interpretations are also subject to our general terms and conditions set out in our current Price Schedule.

Comments

Thank you for using Log-Tech, Inc.
(785) 625-3858

Hoxie, 4 South to 45 Road, 1/2 West, North Into

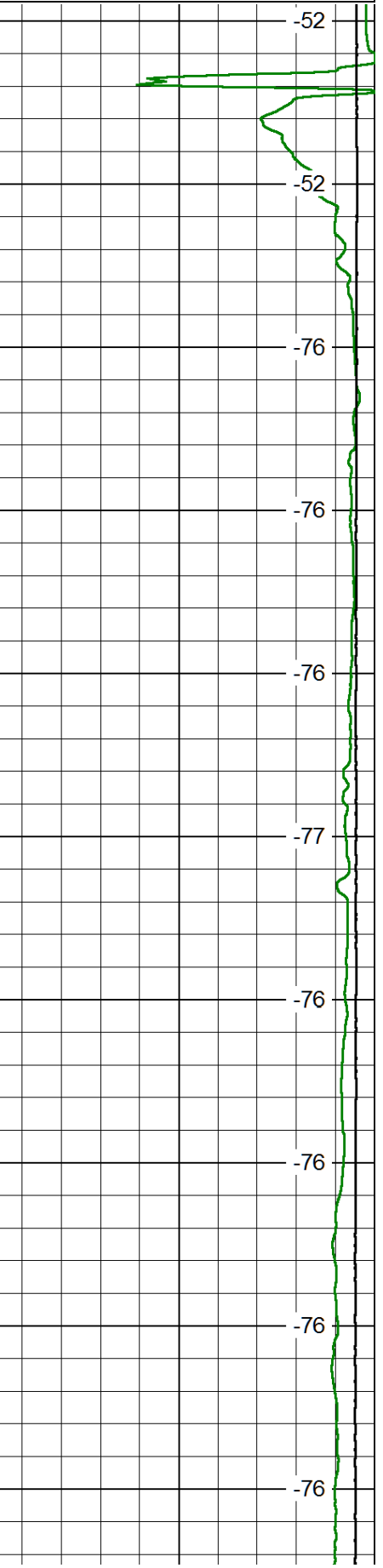
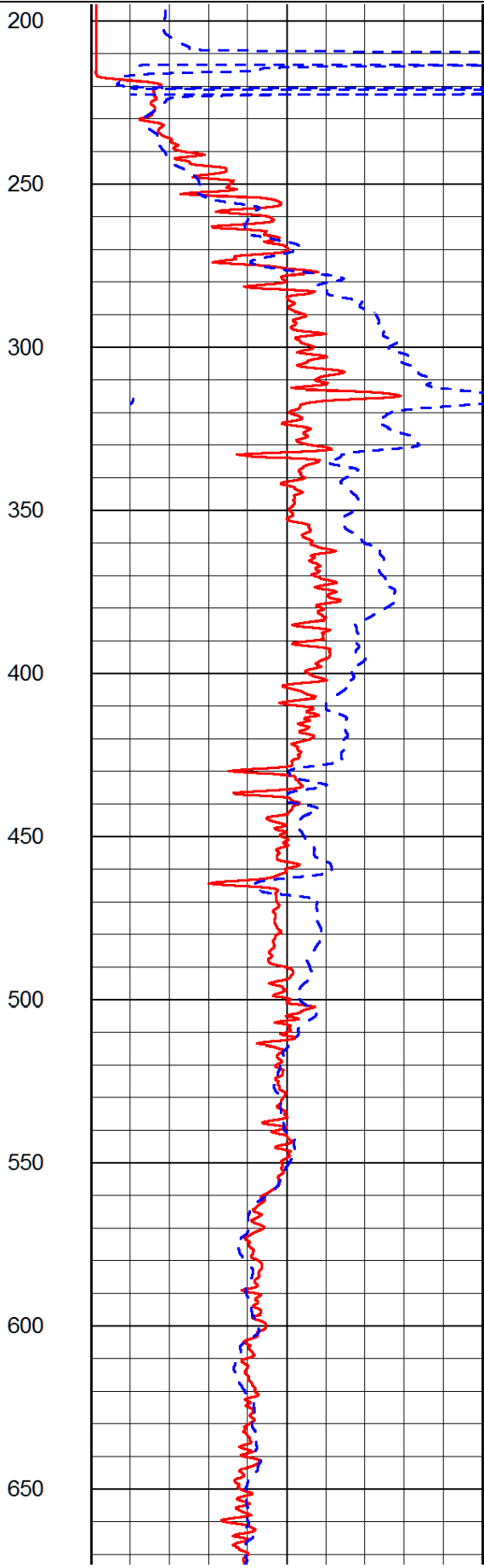
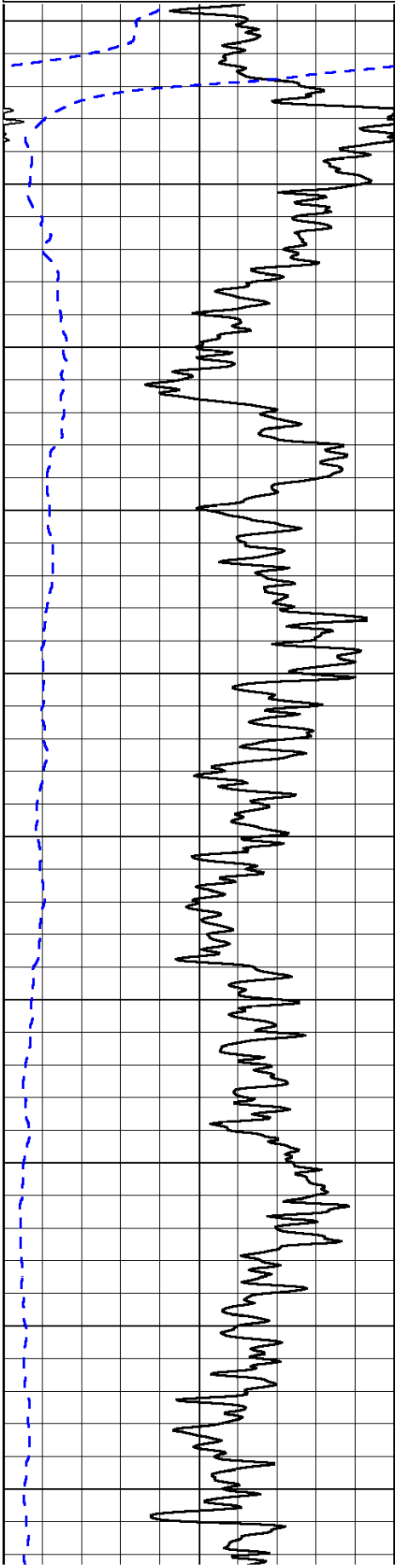
Database File: pioneer_leroyshaw_1hd.db
 Dataset Pathname: dil/pionstck
 Presentation Format: dil2in
 Dataset Creation: Thu Nov 20 10:04:14 2014
 Charted by: Depth in Feet scaled 1:600

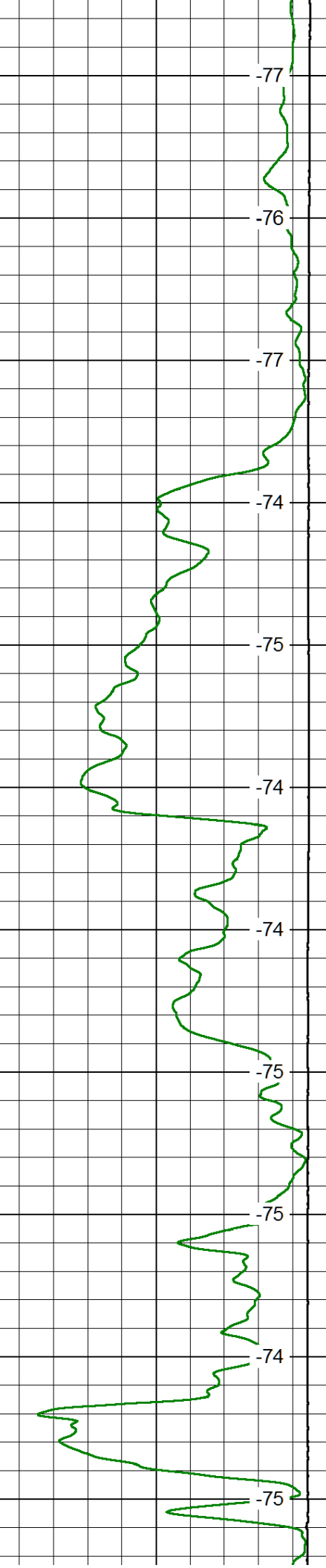
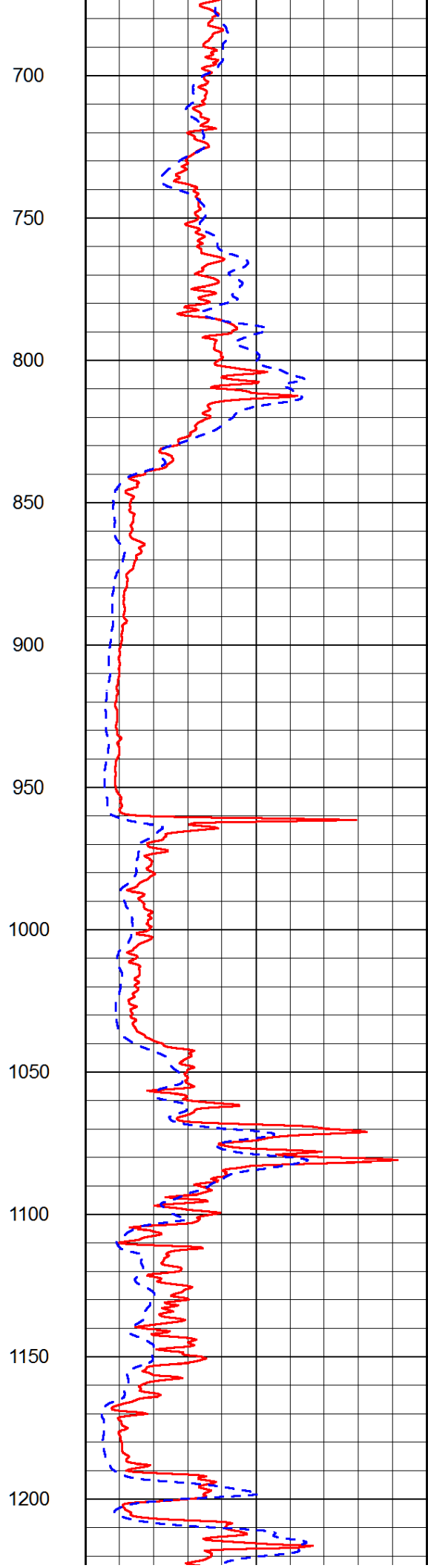
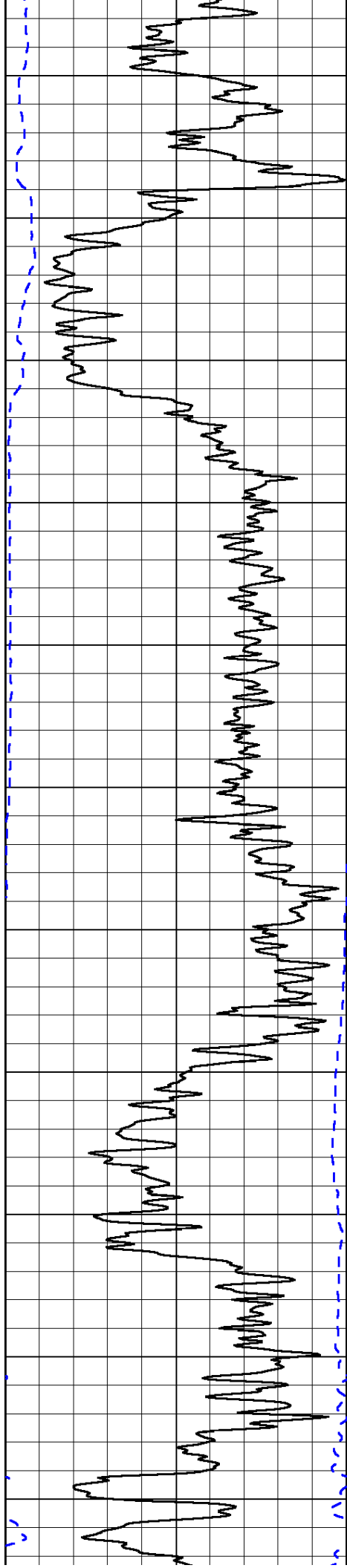
0	Gamma Ray	150
-200	SP (mV)	0

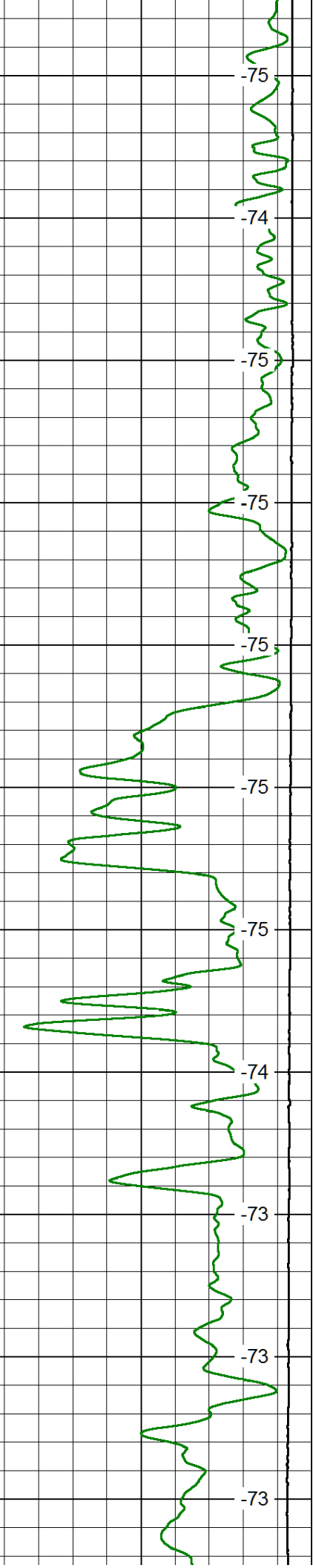
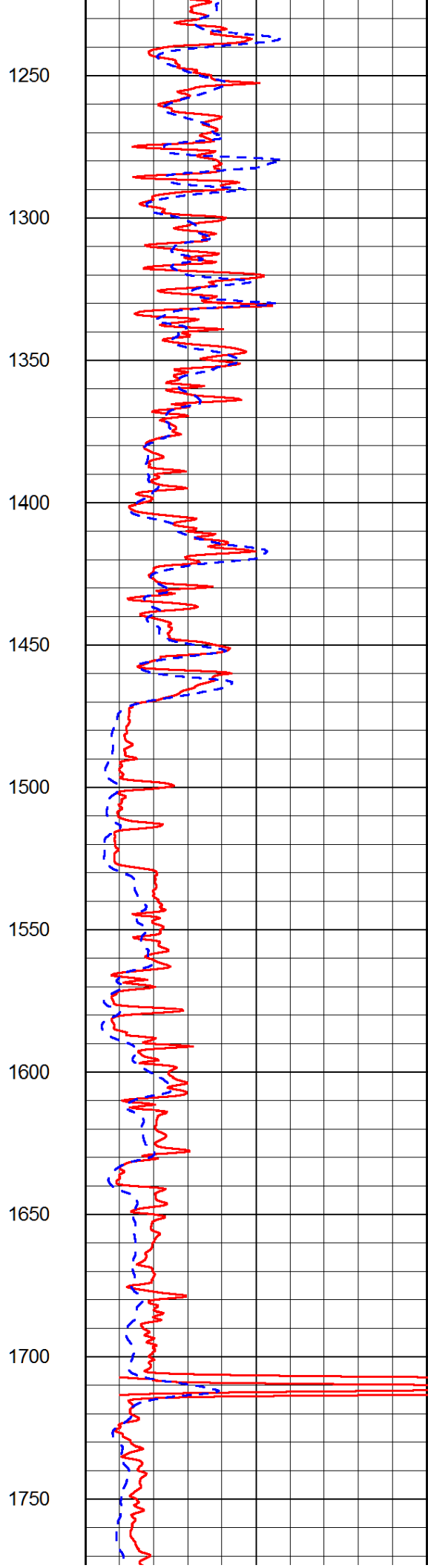
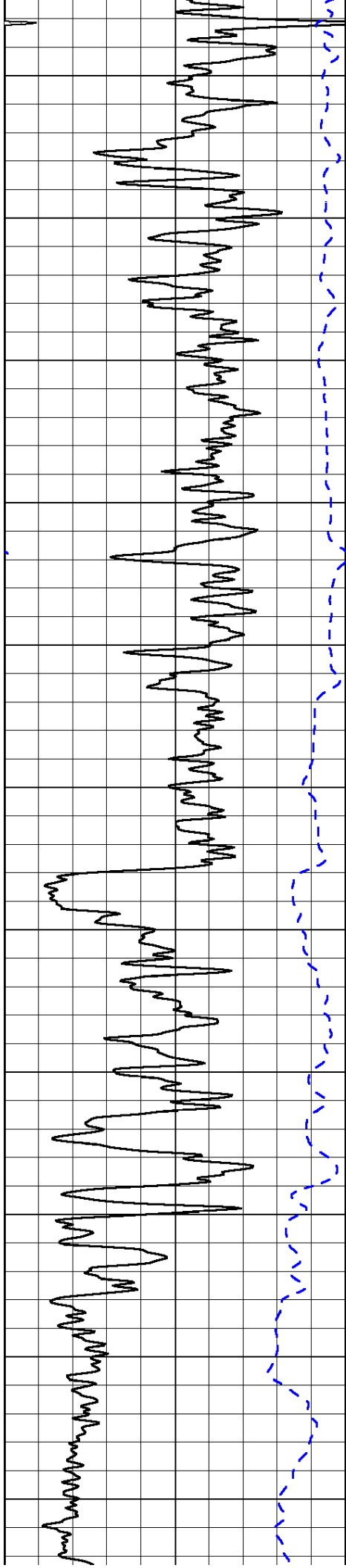
0	Shallow Resistivity	50
0	Deep Resistivity	50
1000	Conductivity	0
15000	Line Tension	0

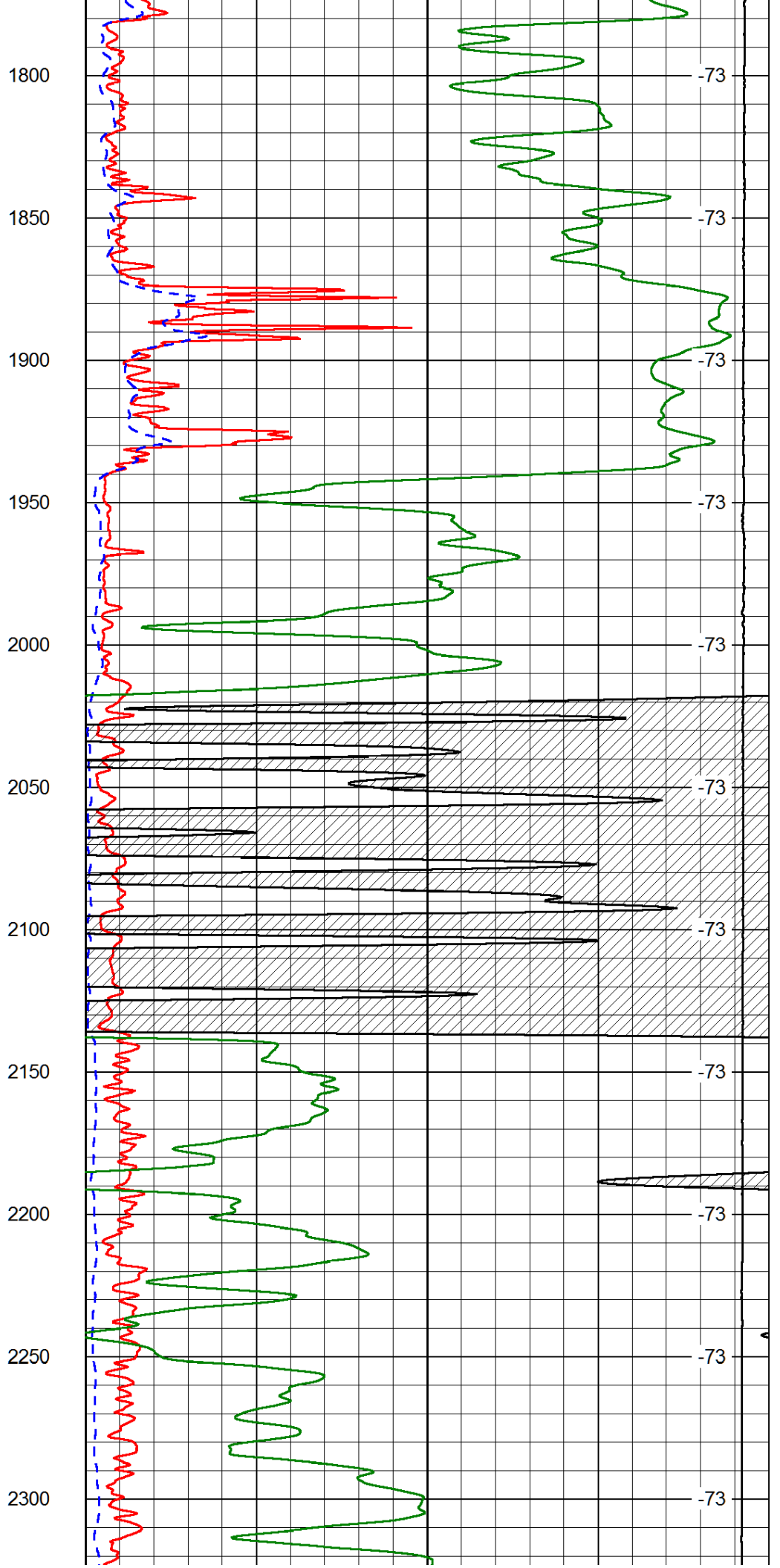
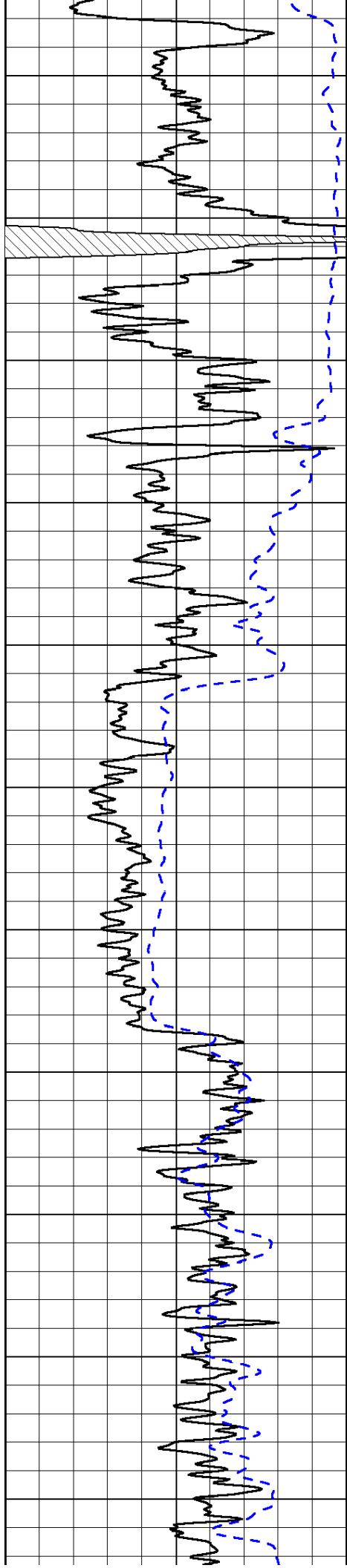
LSPD

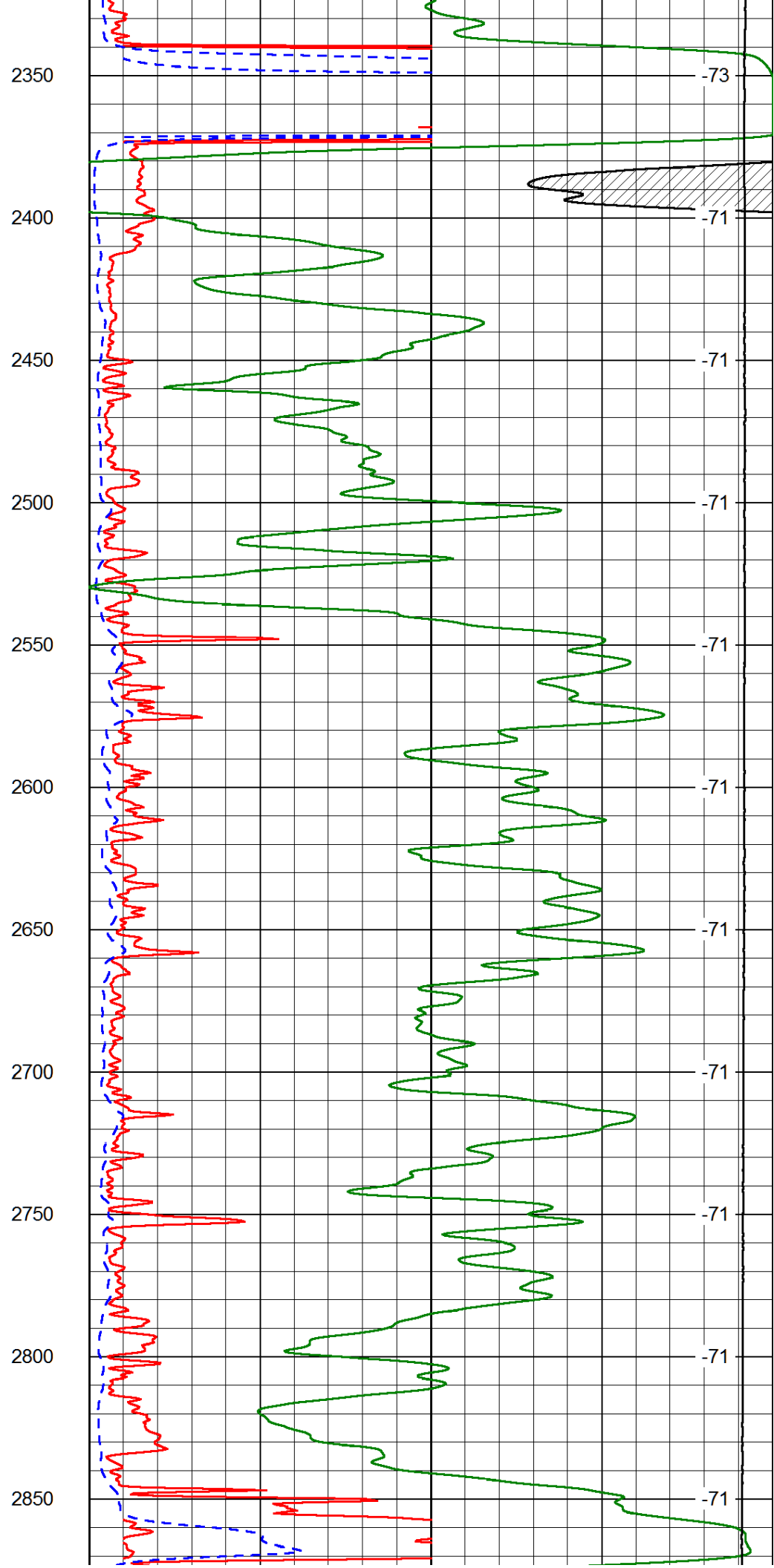
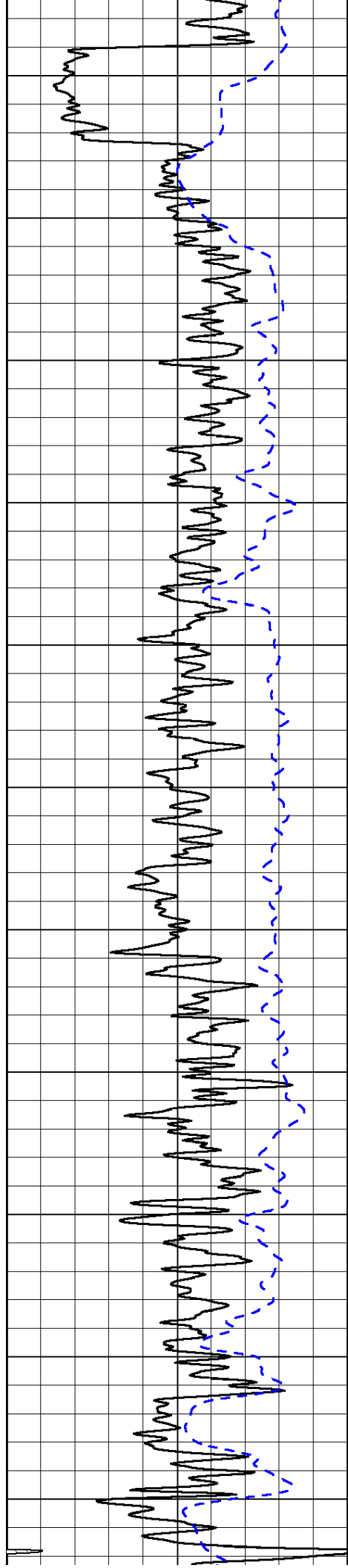
50	Shallow Resistivity	500
50	Deep Resistivity	500

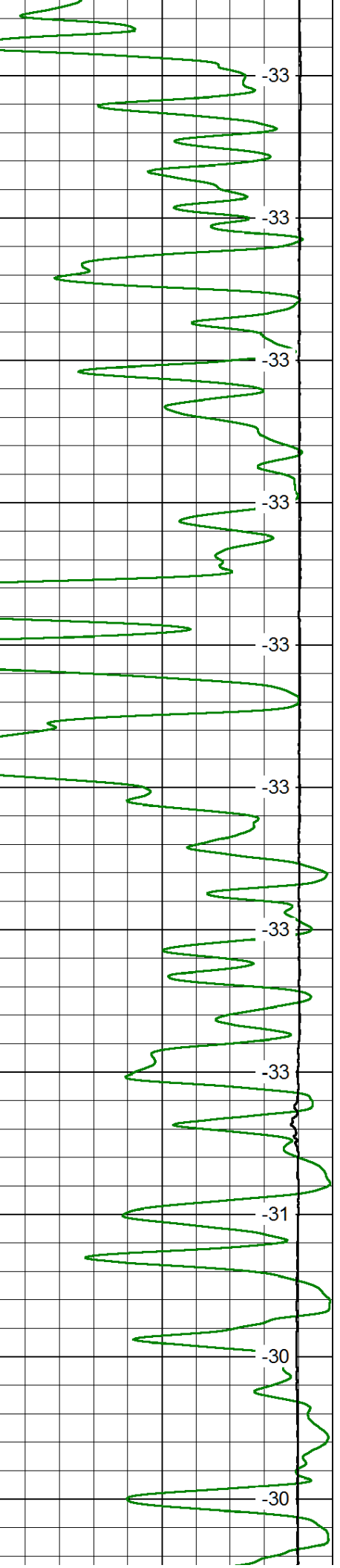
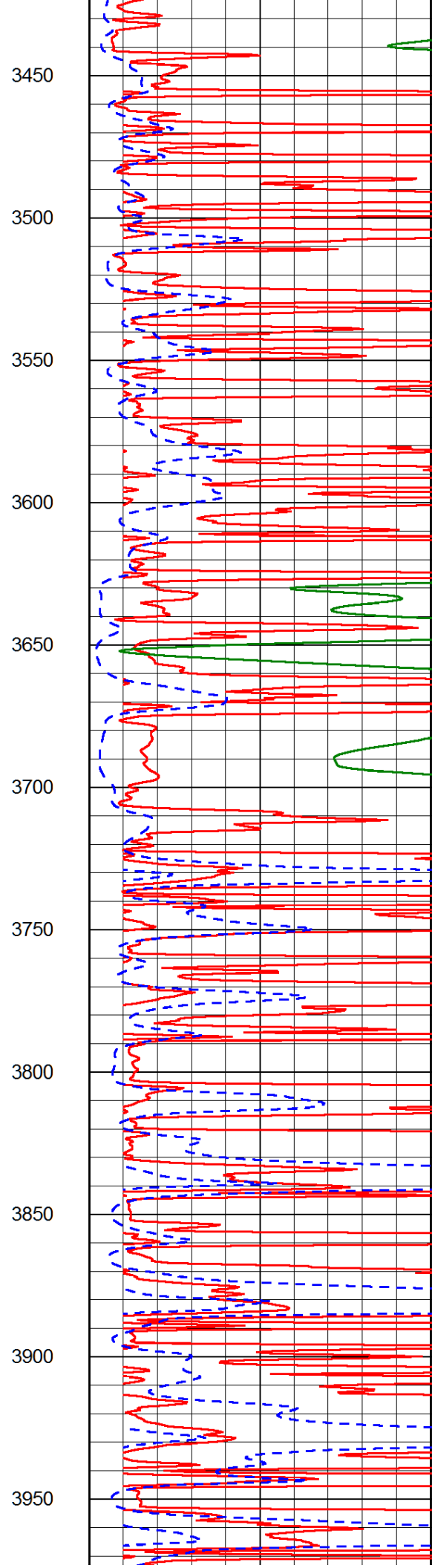
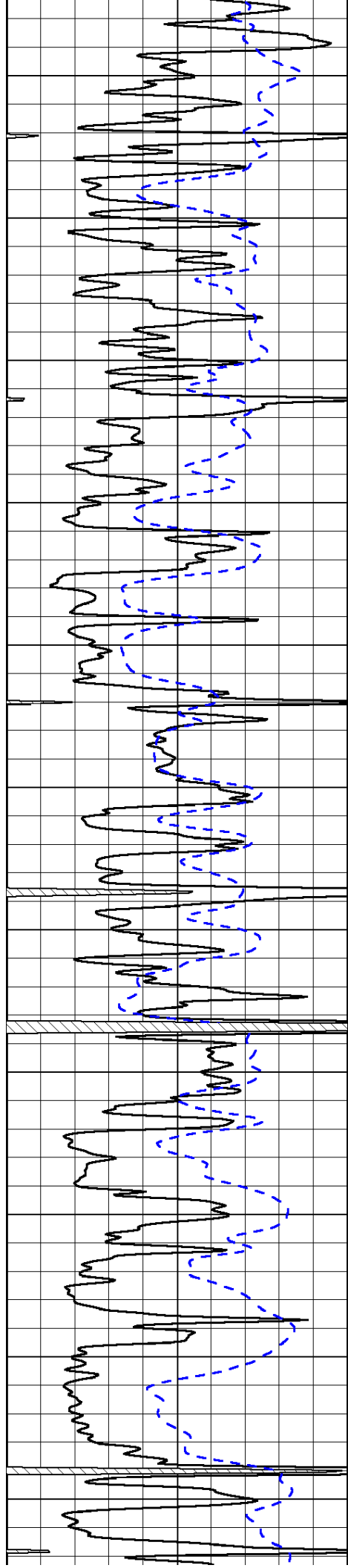


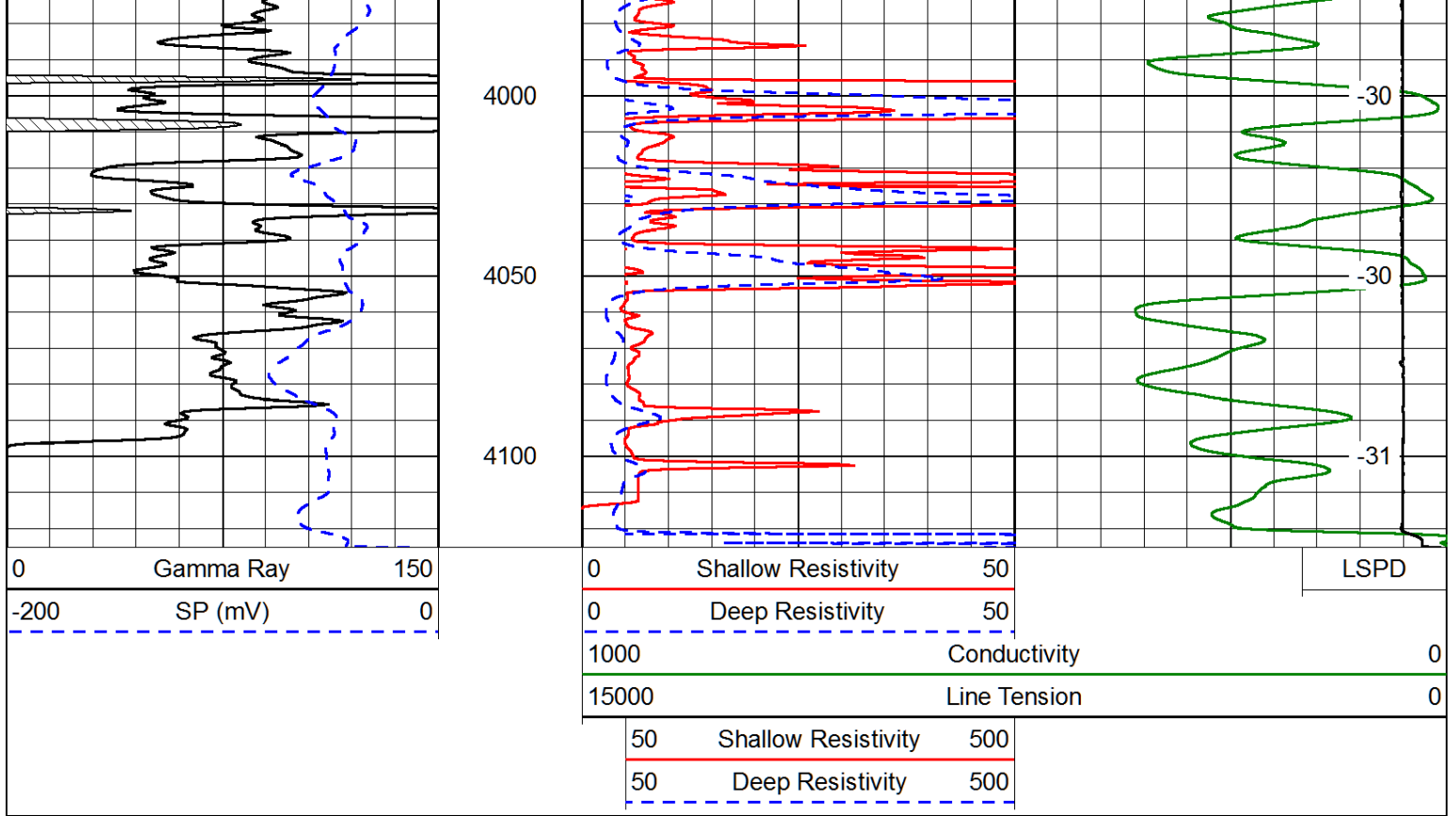




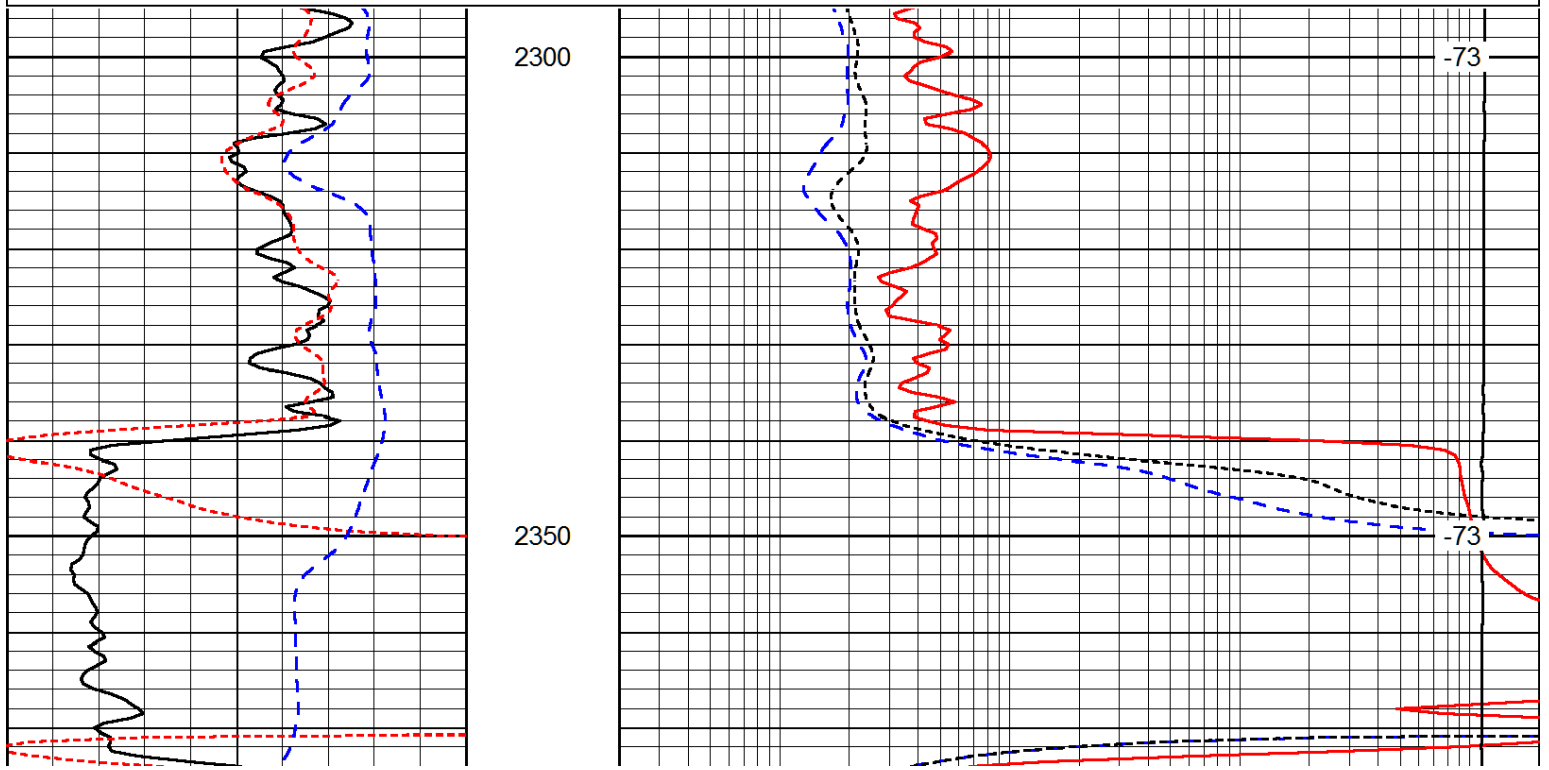
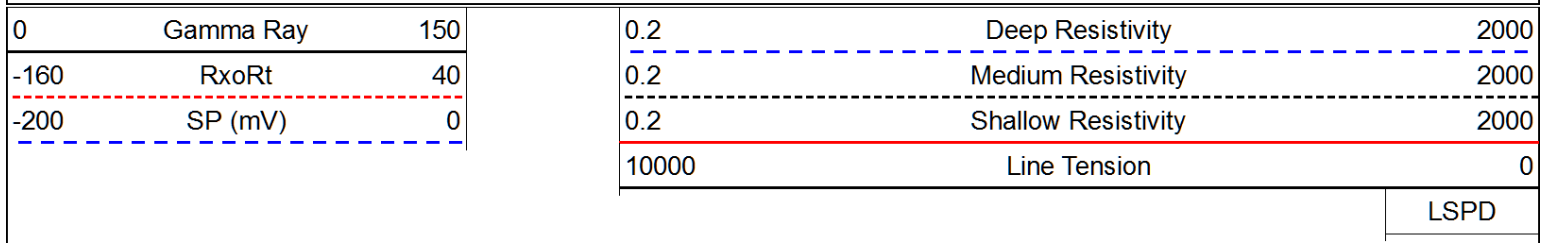


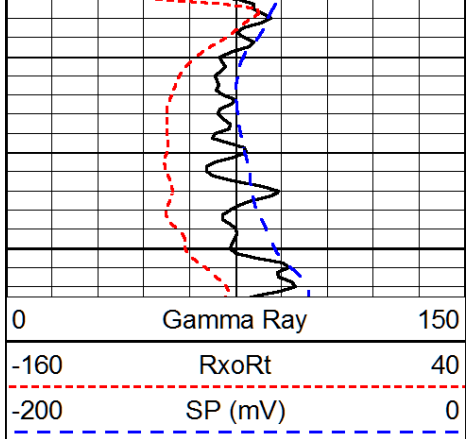




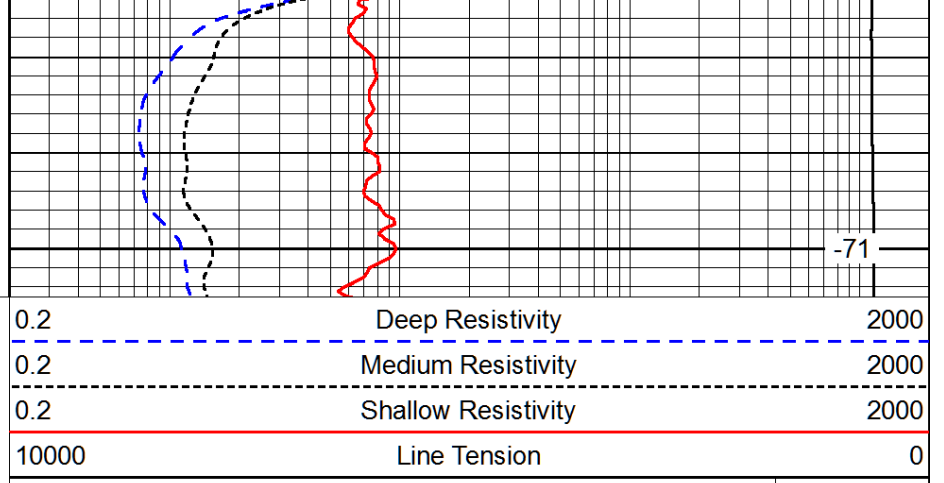


Database File: pioneer_leroyshaw_1hd.db
 Dataset Pathname: dil/pionstck
 Presentation Format: dil
 Dataset Creation: Thu Nov 20 10:04:14 2014
 Charted by: Depth in Feet scaled 1:240





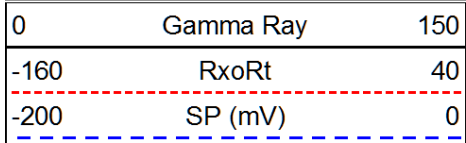
2400



-71

LSPD

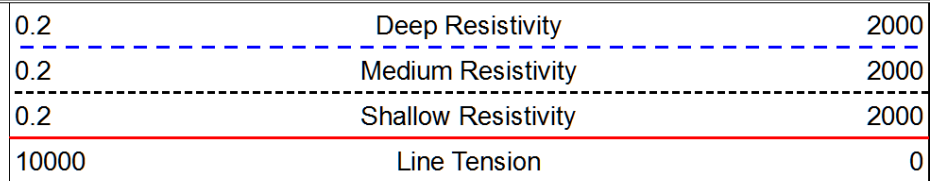
Database File: pioneer_leroyshaw_1hd.db
 Dataset Pathname: dil/pionstck
 Presentation Format: dil
 Dataset Creation: Thu Nov 20 10:04:14 2014
 Charted by: Depth in Feet scaled 1:240



3200

3250

3300

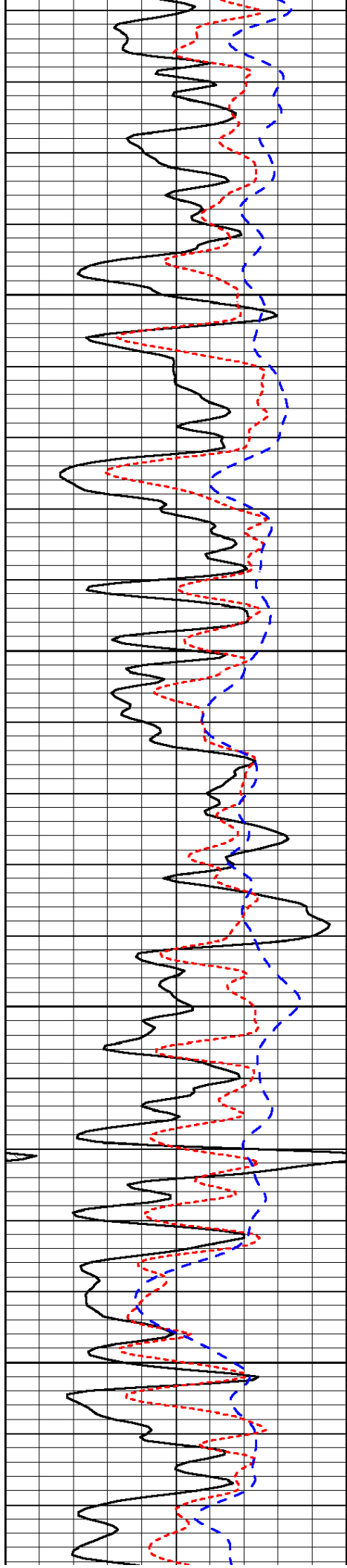


-32

-33

-33

LSPD

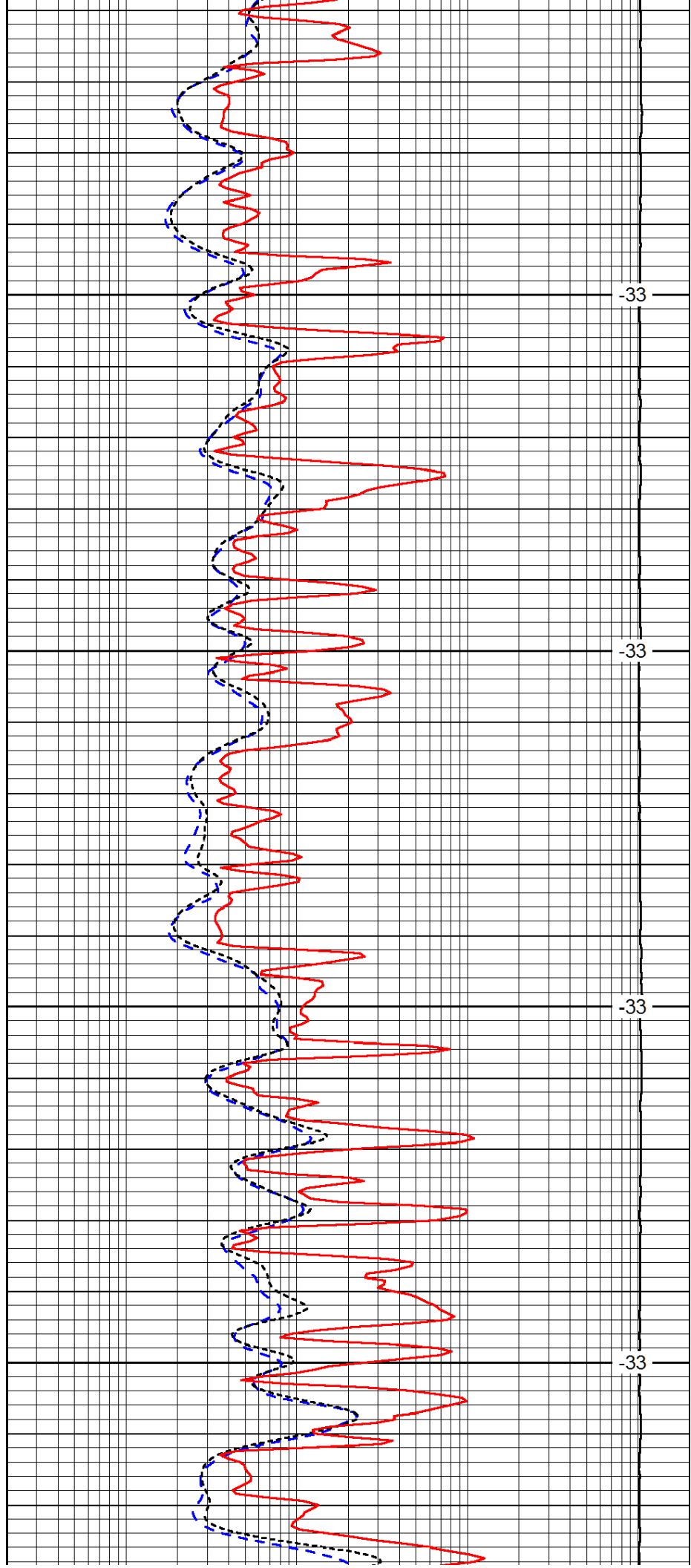


3350

3400

3450

3500

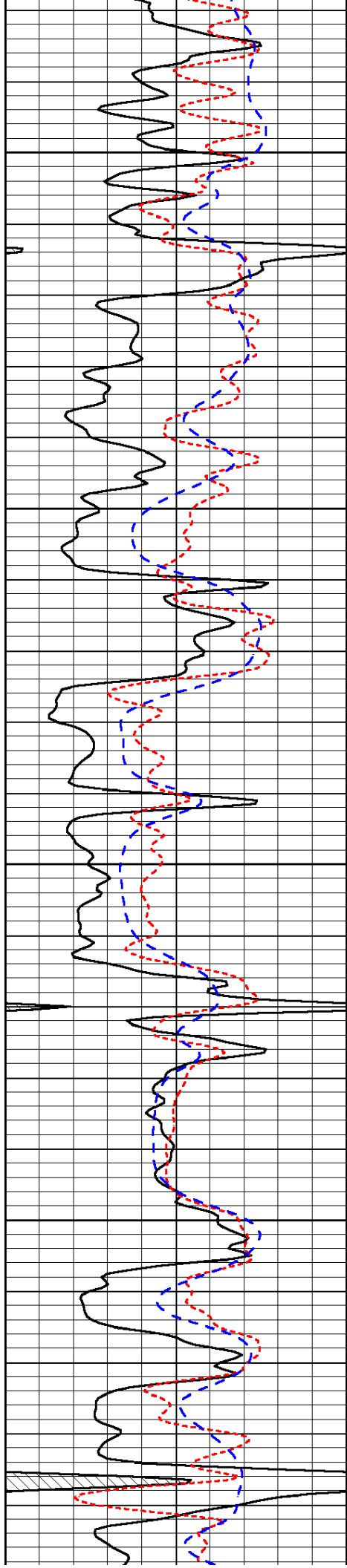


-33

-33

-33

-33

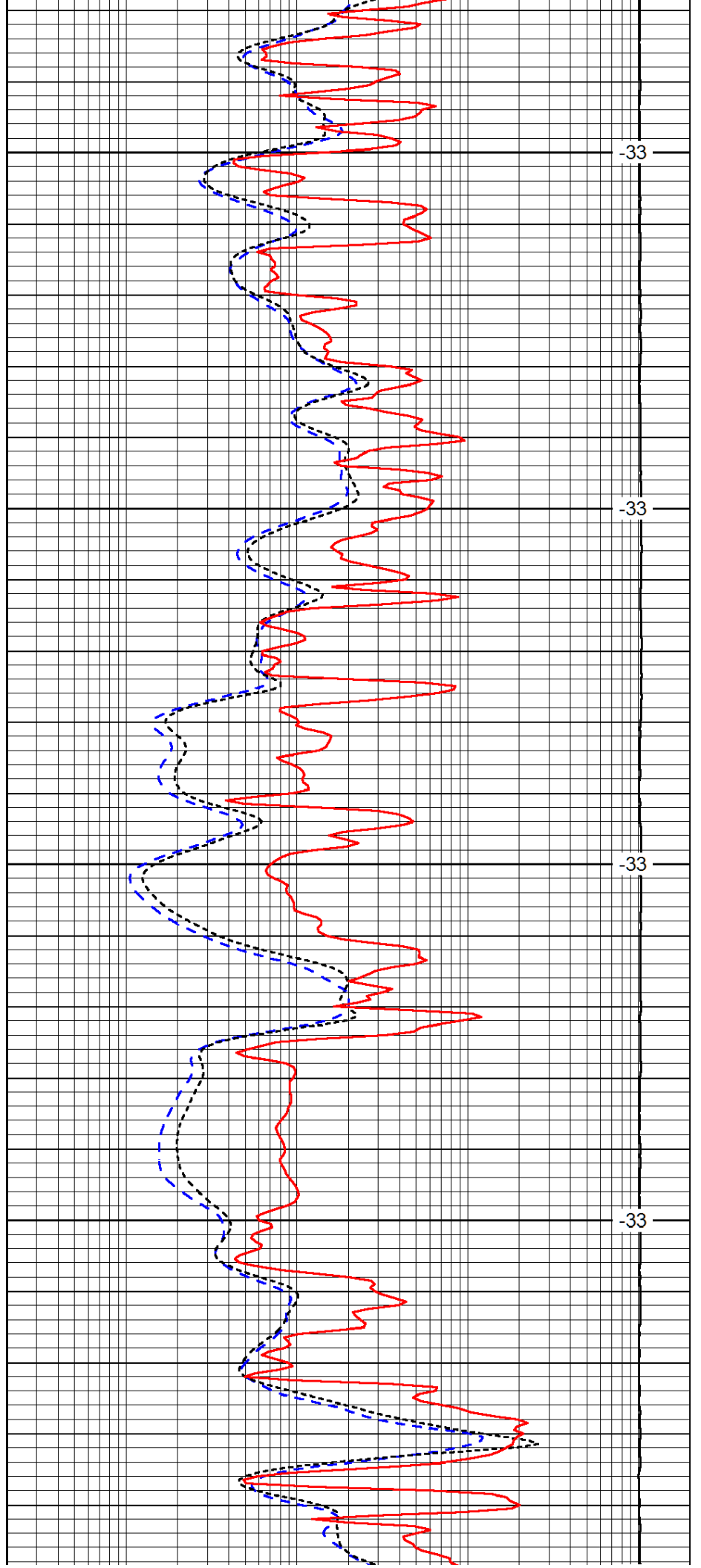


3550

3600

3650

3700

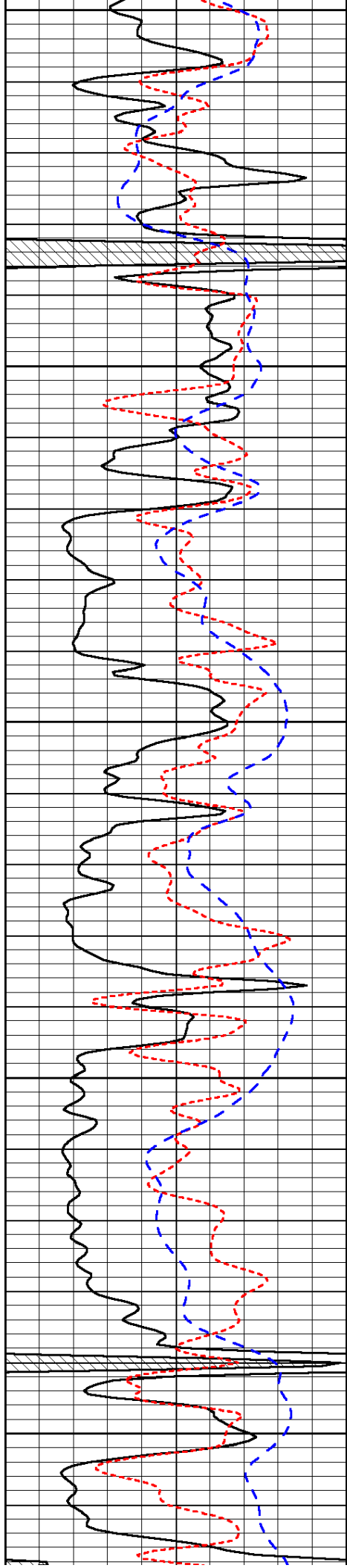


-33

-33

-33

-33



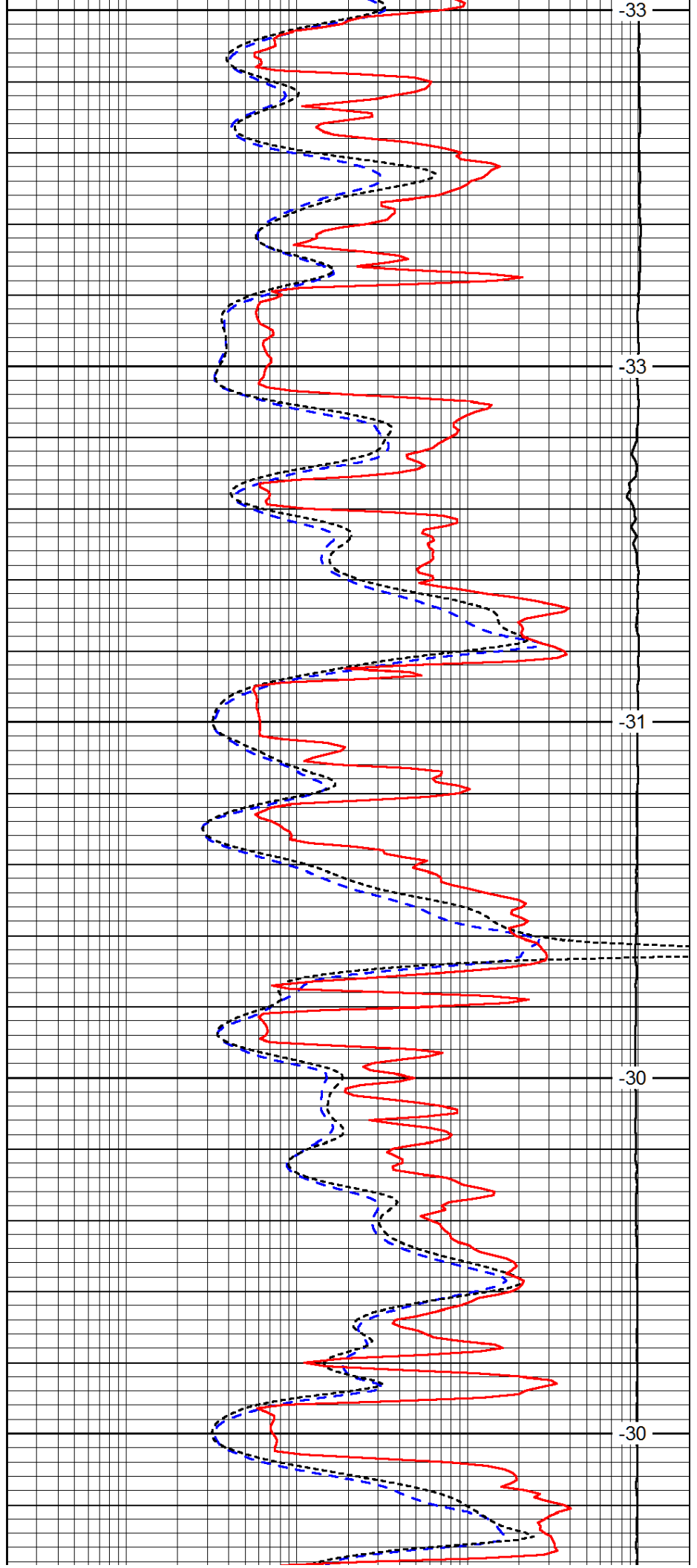
3750

3800

3850

3900

3950



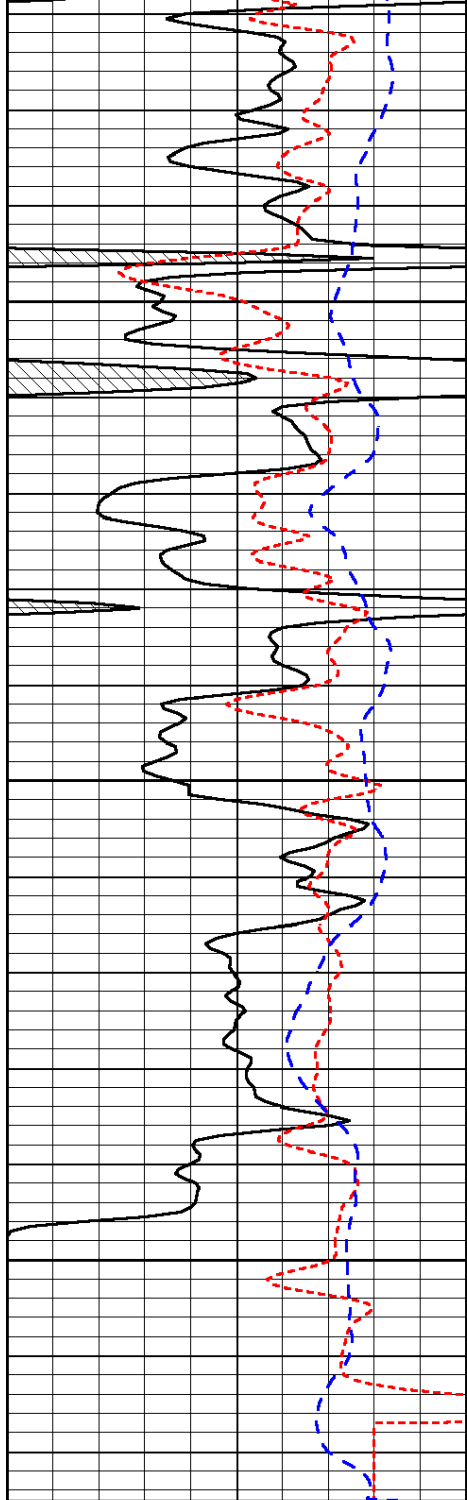
-33

-33

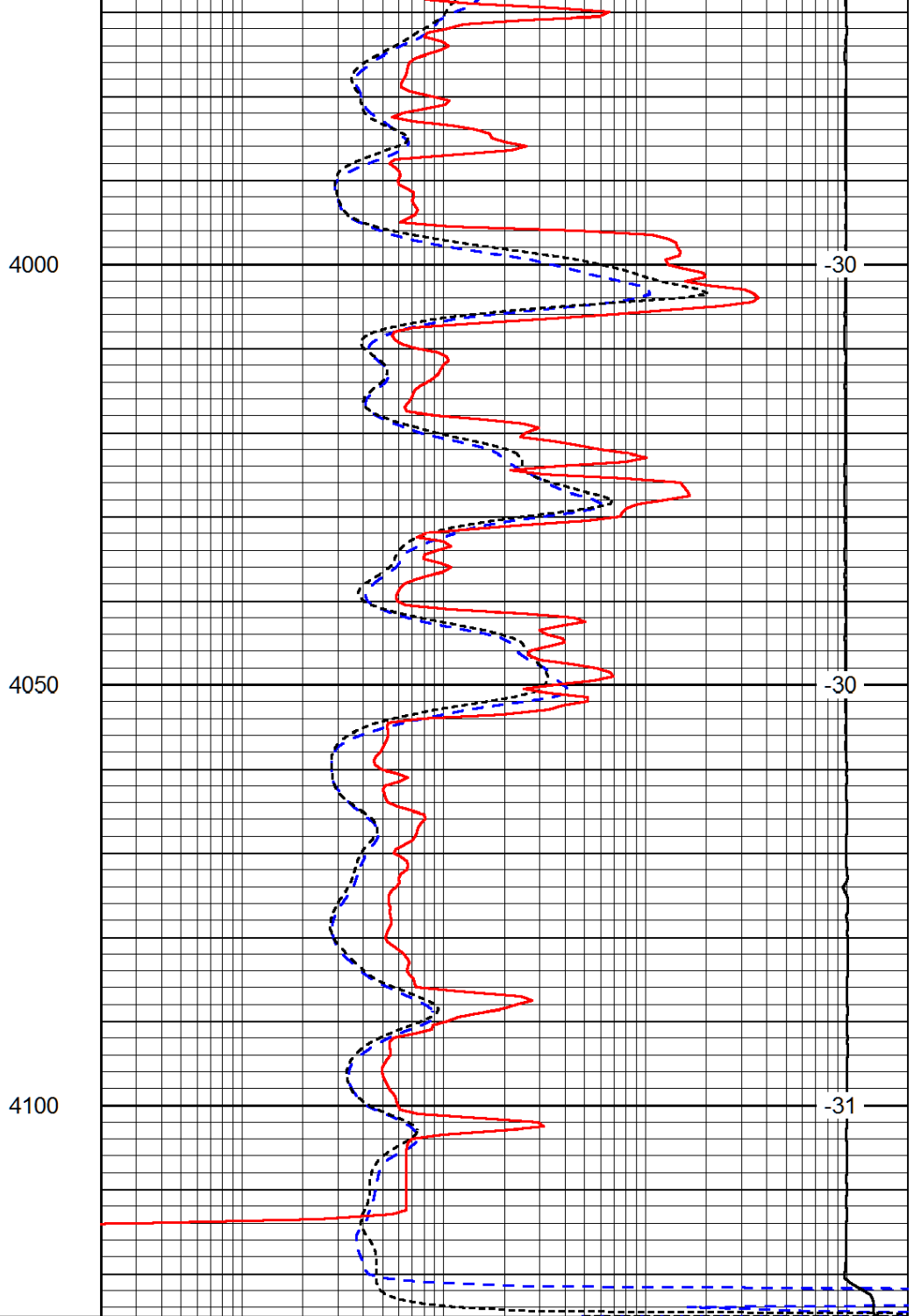
-31

-30

-30



0	Gamma Ray	150
-160	RxoRt	40
-200	SP (mV)	0



0.2	Deep Resistivity	2000
0.2	Medium Resistivity	2000
0.2	Shallow Resistivity	2000
10000	Line Tension	0

LSPD