



COMPANY **COBALT ENERGY, LLC**  
 LEASE **Reinecker 'A' #1-17**  
 FIELD **Wildcat**

LOCATION **1932' FSL & 1529' FEL**  
 SEC. **17** TWP. **11S** RGE. **26W**  
 COUNTY **Gove** STATE **KS**  
 CONTRACTOR **Pickrell Drilling Co., Rig #10**  
 SPUD **02/03/15** COMP **02/12/14**  
 RTD **4550'** LTD **4560'**  
 MUD UP **3400'** TYPE MUD **Chemical**  
 SAMPLES SAVED FROM **3600'** TO **RTD**  
 DRILLING TIME KEPT FROM **3700'** TO **RTD**  
 SAMPLES EXAMINED FROM **3700'** TO **RTD**

GEOL. SUPERVISOR **Corey N. Baker**  
 GEOL. ASSIST. ON WELL **Corey N. Baker**

FORMATION TOPS **ELECTRIC LOG**  
 Anhydrite **2241' (+420)** **2243' (+418)**  
 Base of Anhydrite **2282' (+379)** **2283' (+378)**  
 Heebner **3881' (-120)** **3883' (-122)**  
 Lansing **3925' (-164)** **3924' (-1263)**  
 Stark **4115' (-154)** **4116' (-1457)**  
 BKC **4165' (-1504)** **4165' (-1504)**  
 Pawnee **4431' (-173)** **4416' (-1754)**  
 Fort Scott **4491' (-1730)** **4409' (-1785)**  
 Mississippian **4530' (-1889)** **4530' (-1889)**

ELEVATIONS  
 KB **2661'**  
 DF \_\_\_\_\_  
 GL **2654'**  
 Measurements Are All From **KB**

CASING  
 Conductor **NA**  
 Surface **8 5/8" @ 267'**  
 Production **None**  
 Induction **None**  
 Electrical Surveys **None**  
 Geological Supervision From **3600'** to **RTD**

REMARKS **The Reinecker 'A' #1-17 ran as predicted on 3D but lacked any reservoir based on samples, DST's and logs. The shows were tested with negative results and the well was plugged and abandoned as a dry hole.**

Respectfully Submitted,  
 Corey Baker  
 Vice President - Exploration  
 Cobalt Energy, LLC

API #15-063-22242-00-00

DRILLING TIME IN MINUTES PER FOOT  
 Rate of Penetration Increases

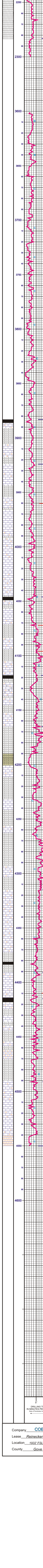
5' 10'

DRILLING TIME IN MINUTES PER FOOT  
 Rate of Penetration Increases

5' 10'

LITHOLOGY

DEPTH



FORMATION TOPS **ELECTRIC LOG**  
 Anhydrite **2241' (+420)** **2243' (+418)**  
 Base of Anhydrite **2282' (+379)** **2283' (+378)**  
 Heebner **3881' (-120)** **3883' (-122)**  
 Lansing **3925' (-164)** **3924' (-1263)**  
 Stark **4115' (-154)** **4116' (-1457)**  
 BKC **4165' (-1504)** **4165' (-1504)**  
 Pawnee **4431' (-173)** **4416' (-1754)**  
 Fort Scott **4491' (-1730)** **4409' (-1785)**  
 Mississippian **4530' (-1889)** **4530' (-1889)**

FORMATION TOPS **ELECTRIC LOG**  
 Anhydrite **2241' (+420)** **2243' (+418)**  
 Base of Anhydrite **2282' (+379)** **2283' (+378)**  
 Heebner **3881' (-120)** **3883' (-122)**  
 Lansing **3925' (-164)** **3924' (-1263)**  
 Stark **4115' (-154)** **4116' (-1457)**  
 BKC **4165' (-1504)** **4165' (-1504)**  
 Pawnee **4431' (-173)** **4416' (-1754)**  
 Fort Scott **4491' (-1730)** **4409' (-1785)**  
 Mississippian **4530' (-1889)** **4530' (-1889)**

LEGEND

Anhydrite Sandstone Limestone Shale Carb Sh Cherty LS Chert Dolomite

SAMPLE DESCRIPTION

REMARKS

2200			
2243	Anhydrite (+418)		
2283	Base of Anhydrite (+378)		
3600			2/7/2015, 7:00pm Geologist on location @ 3600'
3600			Mud Check Vis: 52 Weight: 8.8 LCM: 7#
3600			7:00am, 2/8/2015
3600			Mud-Co Check Vis: 49 Weight: 8.9 LCM: 2#
3883	Heebner (-1222)		
3924	Lansing (-1263)		
3924			Mud Check Vis: 51 Weight: 9.1 LCM: 2# CFS @ 3960'
3924			DST #1 (2934'-3960') Lansing 'C' Open 30" Shut-in 60" Open 60" Shut-in 90" 1st Open: Weak blow, built to 3". ISI: No blow. 2nd Open: Surface blow, built to 3 1/4". FSI: No blow. Rec: 85' Mud Cut Water w/show of oil IFP: 17-30M FFP: 33-57# SIP: 1207-1170#
3924			7:00am, 2/9/2015
3924			Mud-Co Check Vis: 60 Weight: 9.0 LCM: 3#
4046	Muncie Creek (-1385)		
4046			CFS @ 4072'
4046			DST #2 (4046'-4072') Muncie Creek 'H' Open 30" Shut-in 60" Open 60" Shut-in 90" 1st Open: Surface blow, built to 6". ISI: No blow. 2nd Open: Blow returned in 7 min, built to 6.25". FSI: No blow. Rec: 2' Clean Oil 5' SOWCM (10% o, 40% w, 50% m) 125' MCM (30% o, 70% w) 132' Total Recovery IFP: 19-42# FFP: 47-79# SIP: 1107-1078#
4046			7:00am, 2/9/2015
4046			Mud-Co Check Vis: 58 Weight: 9.2 LCM: 2#
4116	Stark (-1457)		
4165	BKC (-1504)		
4165			Mud-Co Check Vis: 66 Weight: 9.5 LCM: 2#
4165			7:00am, 2/11/2015
4165			Mud-Co Check Vis: 66 Weight: 9.5 LCM: 2#
4315	Pawnee (-1654)		
4315			7:00am, 2/11/2015
4315			Mud-Co Check Vis: 66 Weight: 9.5 LCM: 2#
4391	Fort Scott (-1730)		
4391			CFS @ 4410'
4391			Shale: blk, carb
4391			Limestone: lt gry-gr, of stn, sec calc, chrt, prty chky, no vis por, no show
4391			Shale: gry/blk, fs
4391			Limestone: wht-lt gry, of stn, chky in prt, dense
4391			Limestone: lt gry-gr, of stn, vry chrt, bily, dense
4391			Shale: multi-color, arg
4391			Shale: multi-color, arg
4391			Shale: multi-color, arg
4391			Shale: multi-color, arg, cherts AA, few pieces of SS
4391			Limestone: wht-lt gry, of stn, chky, vry sil chrt, no vis por, no show
4391			Limestone: AA w/abund wht of stn, grasy, chky, no vis por, no show some are vry chrt, shrp & dense
4391			Limestone AA, with multi-color arg shales
4391			Limestone: wht, of stn, chrt, shrp, arg, dense
4391			abund chrt, milky wht, frsh
4391			Limestone: AA
4391			Flood, Chrt, milky wht-trasl, fresh, ang, shrp, dense
4550	RTD (-1889)		
4550	LTD (-1889)		

FORMATION TOPS **ELECTRIC LOG**  
 Anhydrite **2241' (+420)** **2243' (+418)**  
 Base of Anhydrite **2282' (+379)** **2283' (+378)**  
 Heebner **3881' (-120)** **3883' (-122)**  
 Lansing **3925' (-164)** **3924' (-1263)**  
 Stark **4115' (-154)** **4116' (-1457)**  
 BKC **4165' (-1504)** **4165' (-1504)**  
 Pawnee **4431' (-173)** **4416' (-1754)**  
 Fort Scott **4491' (-1730)** **4409' (-1785)**  
 Mississippian **4530' (-1889)** **4530' (-1889)**

FORMATION TOPS **ELECTRIC LOG**  
 Anhydrite **2241' (+420)** **2243' (+418)**  
 Base of Anhydrite **2282' (+379)** **2283' (+378)**  
 Heebner **3881' (-120)** **3883' (-122)**  
 Lansing **3925' (-164)** **3924' (-1263)**  
 Stark **4115' (-154)** **4116' (-1457)**  
 BKC **4165' (-1504)** **4165' (-1504)**  
 Pawnee **4431' (-173)** **4416' (-1754)**  
 Fort Scott **4491' (-1730)** **4409' (-1785)**  
 Mississippian **4530' (-1889)** **4530' (-1889)**

Company **COBALT ENERGY, LLC** Elevation **2661' KB**  
 Lease **Reinecker 'A' #1-17**  
 Location **1932' FSL & 1529' FEL** SEC. **17** TWP. **11S** RGE. **26W**  
 County **Gove** State **Kansas**