

Geologic Report
Aaron L. Young

Drilling Time and Sample Log

Scale 1:240 (5"=100') Imperial
Measured Depth Log

Well Name: Young "A" #3
API: 15-095-22294
Location: Section 12 - T30S - R8W
License Number: 5123
Spud Date: 1/19/ 2015
Surface Coordinates: 660' FSL and 660' FEL
Approx. SE - SE
Region: Kingman Co., KS
Drilling Completed: 1/27/15
Bottom Hole Coordinates:
Ground Elevation (ft): 1471' K.B. Elevation (ft): 1481'
Logged Interval (ft): 2900' To: 4215' Total Depth (ft): 4215'
Formation: Mississippian
Type of Drilling Fluid: Chemical - Mud-Co

Printed by MUD.LOG from WellSight Systems 1-800-447-1534 www.WellSight.com

OPERATOR

Company: Pickrell Drilling Company, Inc.
Address: 100 S Main Ste 505
Wichita, KS 67202+3738

GEOLOGIST

Name: Aaron L. Young, M.S.
Company: Pickrell Drilling Company, Inc.
Address: 100 S Main, Suite 505
Wichita, Kansas 67202

General Info

CONTRACTOR: Pickrell Drilling, Rig #1

BIT RECORD:

No.	Size	Make	Jets	Out	Feet	Hours
1	12-1/4	JZ RR	15-15-15	212	202	3.25
2	7-7/8	HA20JQ	15-15-15	3155	2943	53.75
3	7-7/8	HA20JQ	15-15-15	4125	1182	39.00
4	7-7/8	HA30Q	15-15-15	4215	90	2.50

SURVEYS: 212'-.75, 717'-1, 1221'-1, 1727'-1, 2233'-.5, 2737'-.25, 3155'-.25, 4125'-1, 4215'-1

GENERAL DRILLING AND PUMP INFORMATION:

Drilling with 32,000 - 42,000 lbs. on bit and approx 65-75 RPM.

Running 9 stands of collars; 520'

Pumping approx 1100 psi at standpipe.

Daily Status

1/19/15 - Spud @ 7:15pm

1/20/15 - WOC @ 212', Ran 5 jts of New 8 5/8" 28# surface casing set @ 212', cmt w/ 185 sx Class A, 2% gel, 3% CC

1/21/15 - Drilling @ 1284'

1/22/15 - Drilling @ 2107'

1/23/15 - Drilling @ 2980'

1/24/15 - Drilling @ 3550'

1/25/15 - Drilling @ 3950'

1/26/15 - DST #1 4110'-4125'

1/27/15 - DST #2 4125'-4145'

1/28/15 - TD @ 4215', Logged, Ran 103 jts of New 4 1/2" 10.5# prod casing set @ 4205', cmt w/ 115sx Class A, 10% salt, w/ 5# KC/sx, 30sx in RH of 60-40 poz, 4% gel w/ 1/4#FC/sx

DST #1: 4,110' - 4,125' Mississippian
30" - 60" - 90" - 90"

IF: BOB in 1min

ISI: GTS on blow down, No blow back

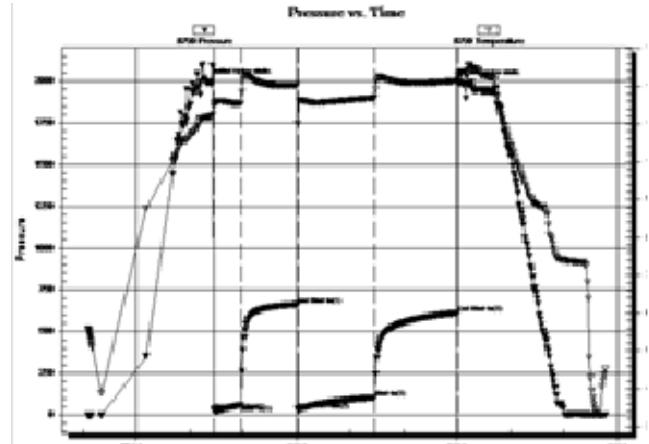
FF: BOB immed. Guaged gas

FSI: No blow

RECOVERY: 30' G0WCM (30% G, 5% O, 5% W, 60% M), 60' GOMCW (10% G, 5% O, 75% W, 10% M)

Guaged Gas: FF: 10"-11.75, 20"-15.87, 30"-19.24, 40"-21.48, 50"-23.36, 60"-25.23, 70"-26.35, 80"-27.47, 90"-28.6

SIP: 662-612; FP: 28-61, 28-106; HP: 1997-1987;



DST #1: 4,125' - 4,145' Mississippian
30" - 60" - 90" - 90"

IF: BOB in 30sec

ISI: No blow

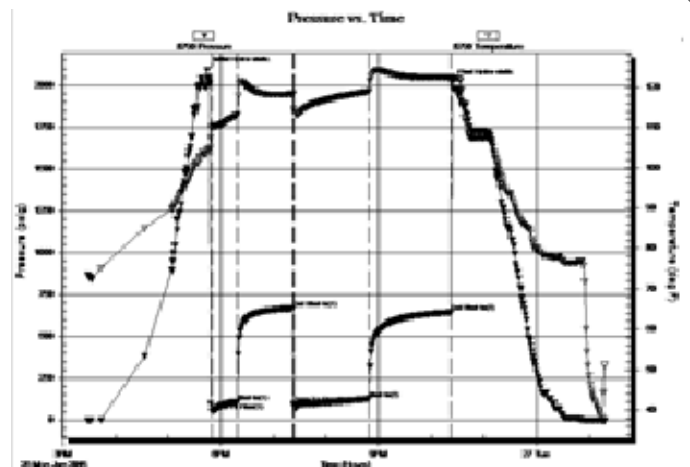
FF: BOB immed. Guaged gas

FSI: No blow

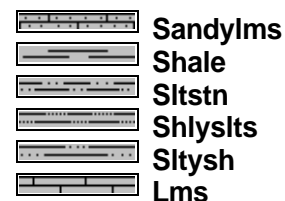
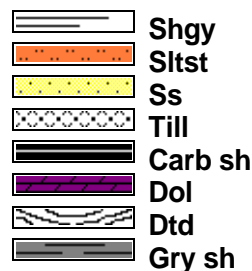
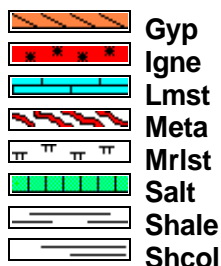
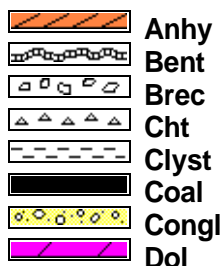
RECOVERY: 60' GMWCO (22% G, 37% O, 26% W, 15% M), 60' GMWCO (30% G, 50% O, 15% W, 5% M), 120' CGO (10% G, 90% O), 35' W (Chlor-120,000ppm)

Guaged Gas: FF: 10"-73.61, 20"-76.78, 30"-84.71, 40"-73.61, 50"-59.33, 60"-56.16, 70"-52.99, 80"-51.40, 90"-49.81

SIP: 668-644; FP: 52-107, 97-127; HP: 2093-2017;



ROCK TYPES

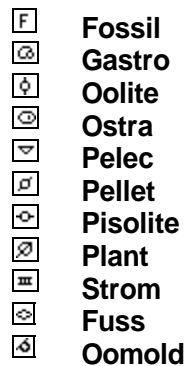
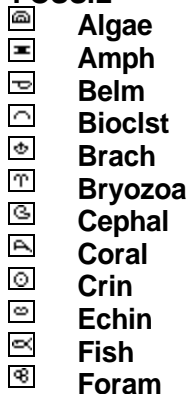


ACCESSORIES

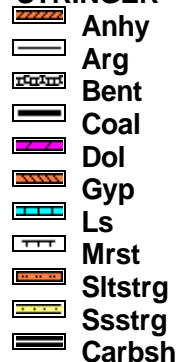
MINERAL



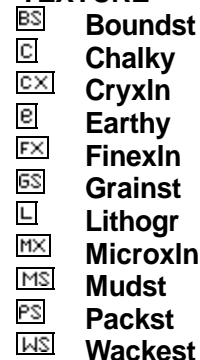
FOSSIL



STRINGER

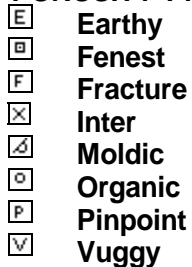


TEXTURE



OTHER SYMBOLS

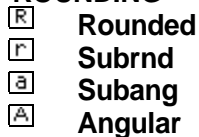
POROSITY TYPE



SORTING



ROUNDING



OIL SHOWS




INTERVALS



EVENTS



Curve Track 1
 ROP (min/ft) 

Depth

Porosity

24%
18%
12%
6%

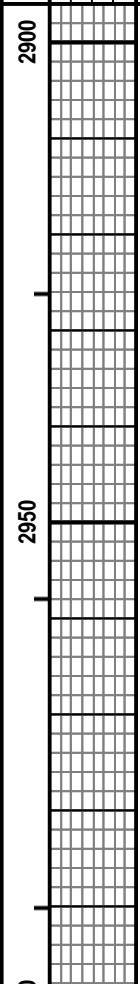
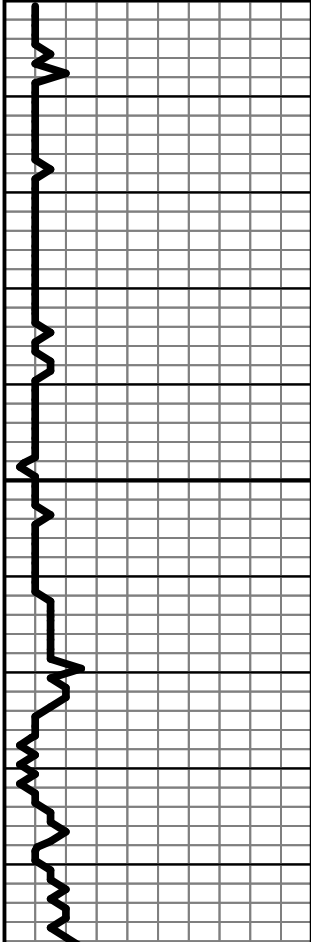
Lithology

OIL Shows

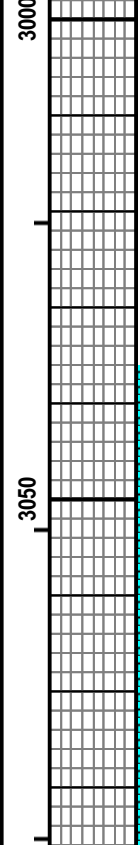
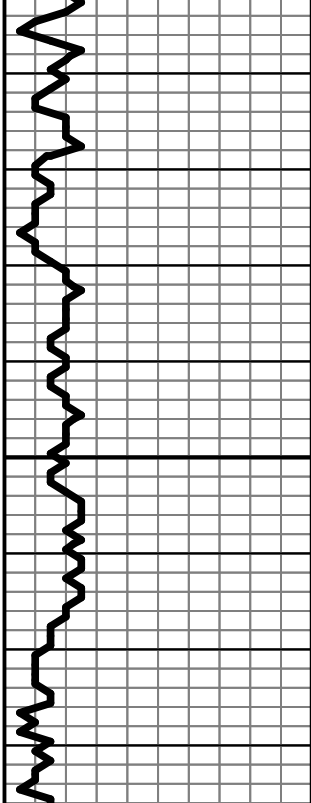
Geological Descriptions

New Track

0 ROP (min/ft) 10



0 ROP (min/ft) 10

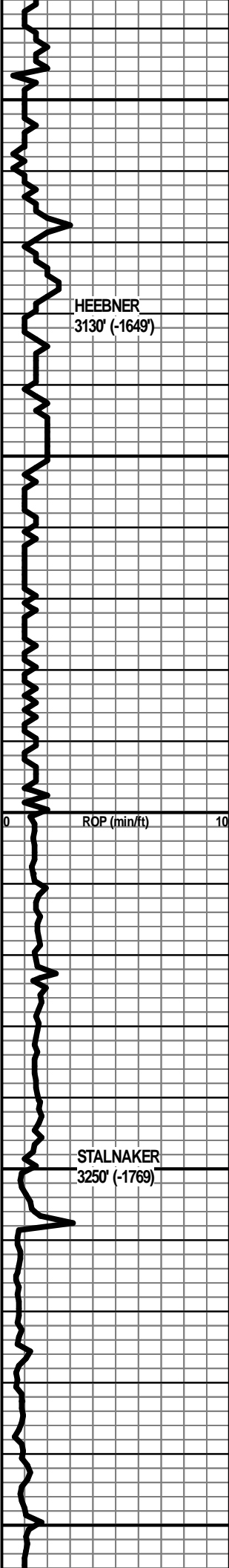


LS - CRM, VF / F XLN, PRED CHKY, SUBCHKY IN PT

LS - TAN / GY, F XLN, MOD DNS / DNS, FOSS

LS - TAN / GY, VF / F XLN, MOD DNS / SUBCHKY

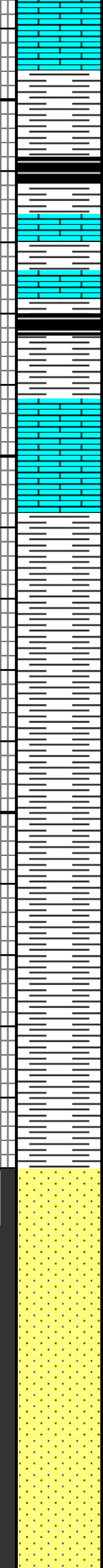
WT 8.7
 VIS 72



HEEBNER
3130' (-1649')

STALNAKER
3250' (-1769')

3100
3150
3200
3250
3300



SH - GY / BLK

SH - GY / BLK, CARB

LS - TAN / GY, F XLN, MOD DNS, FOSS

SH - BLK, CARB

SH - GY

LS - TAN, VF / F XLN, SUBCHKY / MOD DNS

SH - GY, V SOFT

SH - GY, SLTY

SH - GY / LT GRN, SLTY IN PT

SH - GY / GRN, GYIS SLTY IN PT, GRN IS WXY IN PT

SH - GY, SLTY

SS - CLR, FN GR, MOD SRTD, SUB RND, GLAUC, G POR, NS, NO ODOR

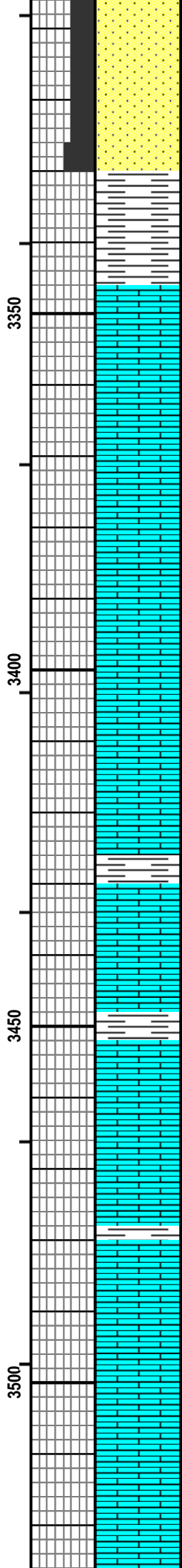
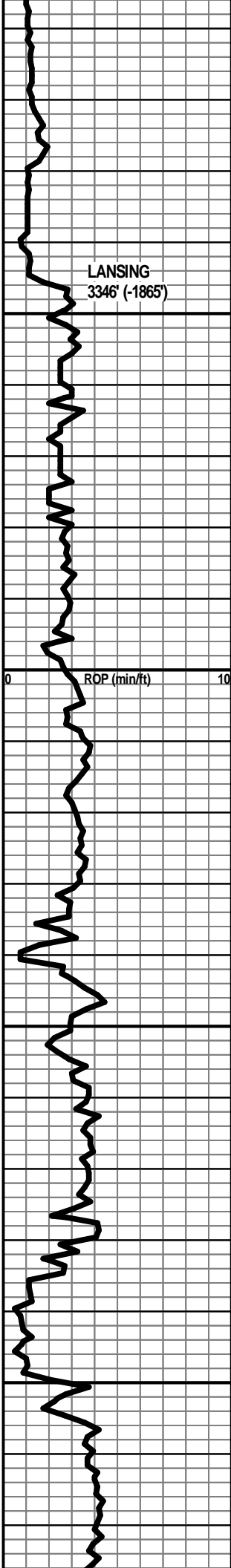
SS - CLR / GY, FN GR, W SRTD, SUB RND / RND, GLAUC, G POR, NS, NO ODOR

SS - GY, FN GR, W SRTD, W RND, F POR, GLAUC, NS

WT 8.6
VIS 55

WT 8.4
VIS 64

WT 8.4
VIS 57



SS - GY, FN GR, W SRTD, W RND, W CEM, P POR, DNS

SS - CLR / GY, FN GR, W SRTD, W RND, F / G POR, OIL SHEEN, SLI ODOR, NO FLUOR

SH - GY

LS - TAN / BRN, VF / F XLN, MOD DNS / DNS, NS, NO ODOR

LS - CRM, VF / F XLN, MOD DNS / DNS, FOSS

WT 8.9
VIS 53

LS, CRM / GY, VF / F XLN, MOD DNS / SUBCHKY IN PT, FOSS

SH - RD / GRN / GY

WT 8.9
VIS 53

SH - LT GY / DK GY

LS - CRM, VF XLN, SUBCHKY / MOD DNS

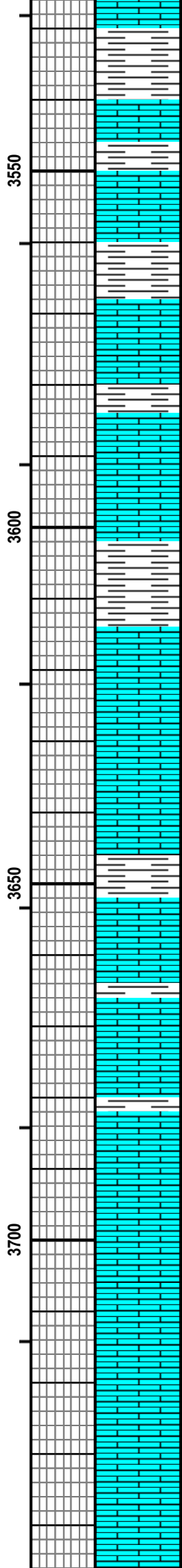
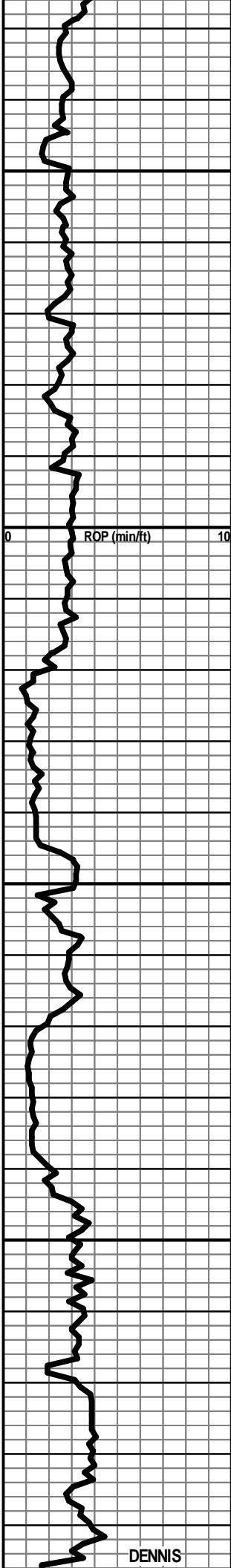
SH - GRN, W LS - GY, VF / F XLN, MOD DNS, DNS

WT 9.0
VIS 52

LS - GY / BRN, F XLN, MOD DNS / DNS, FOSS IN PT

WT 8.9
VIS 48

LS - OFF-WHT / CRM, F XLN, DNS



SH - GRN / GY, WXY IN PT

SH - RD / GRN / MAR

SH - GRN / GY

LS - CRM, VF / FXLN, SUBCHKY / MOD DNS

LS - GY / BRN, F XLN, DNS, FOSS

SH - GRN / GY / RD

LS - TAN, VF / F XLN, MOD DNS, FOSS (FUSULINIDS)

LS - BRN, F XLN, DNS, FOSS IN PT

SH - LT GY / DK GY

LS - CRM / TAN, VF / F XLN, DNS

LS - TAN / GY, F XLN, DNS, FOSS IN PT

LS - GY / BRN, VF / F XLN, MOD DNS / DNS

LS - DK GY, F XLN, MOD DNS / DNS, ABUND FOSS

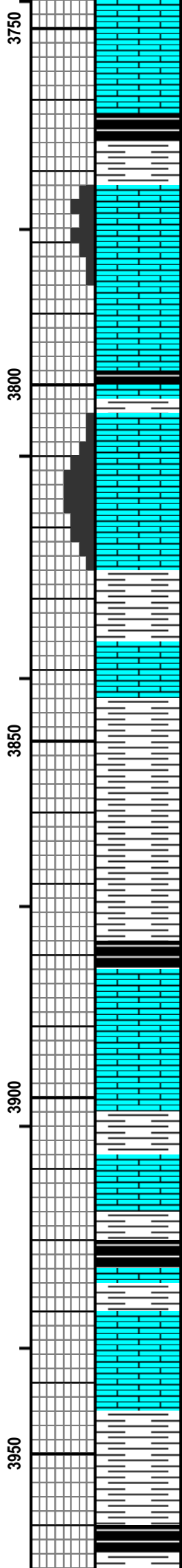
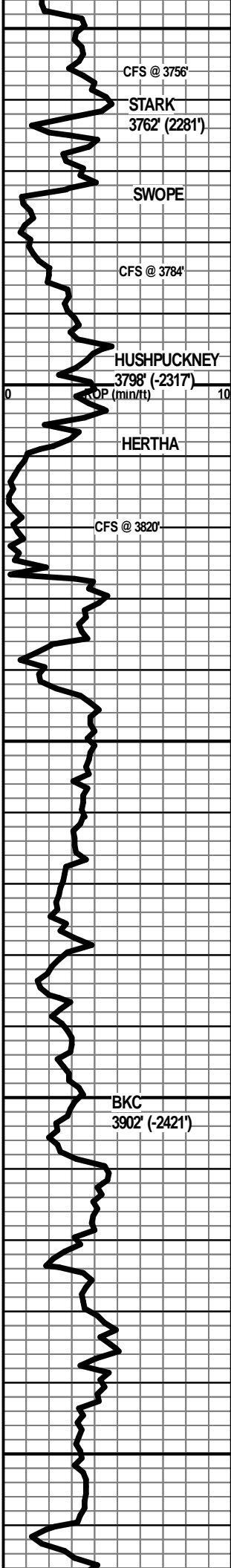
LS - WHT / CRM, VF / F XLN, SUBCHKY / CHKY, FOSS

LS - OFF WHT / CRM, VF / F XLN, P / F INTXIN

WT 8.9
VIS 48

WT 9.0
VIS 52

WT 9.5
VIS 53

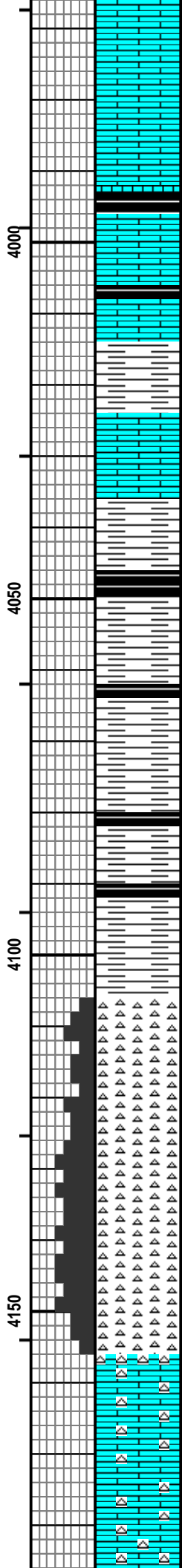
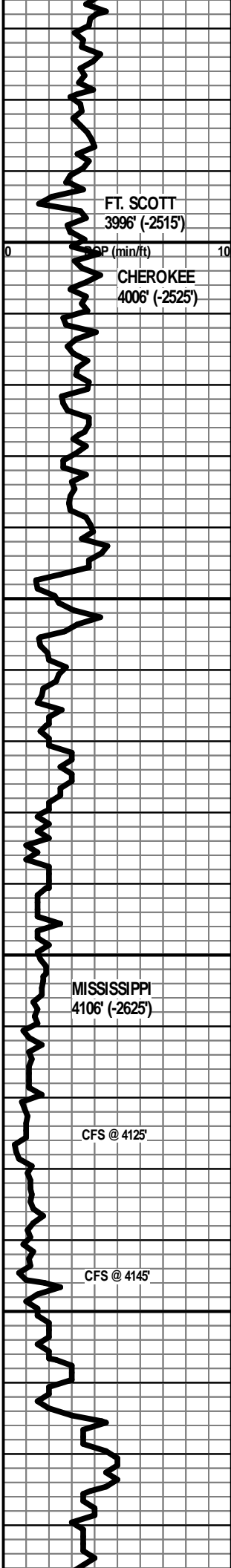


POR, NS, NO ODOR, NO FLUOR
 LS - TAN, F XLN, DNS
 SH - BLK, CARB, GAS BUBBLES
 LS - TAN, VF / F XLN, F / G INTXLN POR, NS, NO ODOR, NO FLUOR
 LS - TAN / BRN, F XLN, DNS, FOSS IN PT, NS
 SH - BLK, CARB, GAS BUBBLES
 LS - TAN / GY, F XLN, DNS, NS
 LS - TAN / BRN, F XLN, F / G OOLMOLDIC + INTXLN POR, NS, SLI YEL FLUOR
 LS - TAN / BRN, F XLN, G OOLMOLDIC + INTXLN POR, NS
 SH - GY
 LS - TAN / GY, F XLN, MOD DNS / DNS
 SH - GY
 SH - GY
 SH - BLK, SLI CARB
 LS - OFF WHT / CRM, VF XLN, SUBCHKY / CHKY
 SH - GRN, DNS, LMY IN PT
 LS - TAN, F XLN, DNS
 SH - BLK, CARB
 LS - TAN, F XLN, DNS
 SH - GY
 SH - BLK, SLI CARB

WT 9.3
VIS 51

WT 9.1
VIS 45

WT 9.4
VIS 44



LS - TAN / GY, VF / F XLN, MOD DNS / DNS, FOSS

LS - TAN / GY, F XLN, DNS, FOSS

SH - BLK, CARB

LS - TAN, F / M XLN, DNS

SH - BLK, CARB

SH - GRN / GY

LS - TAN, F XLN, DNS

SH - LT GY / DK GY

SH - BLK, CARB

SH - LT GY / DK GY, PYRITIC IN PT

SH - BLK, CARB

SH - LT GY / DK GY

SH - BLK, SLI CARB

SH - GY

SH - BLK, CARB

SH - LT GY

CHT - WHT / BRN, WEATH, F / G TRIP POR, VGS GAS, SSFO, OIL SHEEN, ABUND OIL STN, F ODOR, G YEL-GRN FLUOR

CHT - WHT / BRN, 50% FRSH, 50% WEATH, G TRIP POR, FSFO, VGS GAS, F ODOR, G YEL-GRN FLUOR

CHT - WHT / BRN, FRSH IN PT, PRED WEATH, G TRIP POR, GSFO, GS GAS, F ODOR, G YEL-GRN FLUOR

CHT - WHT / BRN, WEATH, G / XLCNT TRIP POR, VGSFO, GS GAS, G ODOR, G YEL-GRN FLUOR

CHT - WHT / BRN, 50% FRSH, 50% WEATH, G TRIP POR, GSFO, GS GAS, G ODOR, G YEL-GRN FLUOR

LS - OFF WHT / GY, VF / F XLN, MOD DNS, NS, NO ODOR, W/ CHT - WHT, FRSH, DNS

LS - OFF WHT / GY, VF / F XLN, MOD DNS / DNS, NS, W/ ABUND CHT - WHT, FRSH, DNS

Strap Board Strap

WT 9.3
VIS 55

DST #1
MISSISSIPPIAN
4110'-4125'
30"-60"-90"-90"

IF: BOB in 1min
ISI: GTS on blow down, No blow back
FF: BOB immed. Guaged gas
FSI: No blow

Rec': GTS (*see top of report), 30' GOWCM (30% G, 5% O, 5% W, 60% M), 60 GOMCW (10% G, 5% O, 75% W, 10% M)

IH: 1997#
IF: 28#-61#
ISI: 662#
FF: 28#-106#
FSI: 612#
FH: 1987#

WT 9.2
VIS 51

DST #2
MISSISSIPPIAN
4125'-4145'
30"-60"-90"-90"

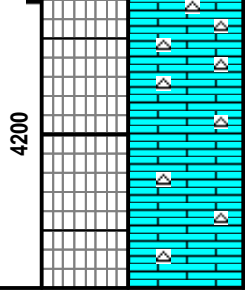
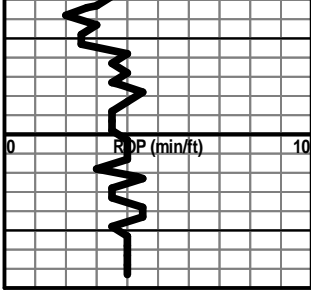
IF: BOB in 30sec, GTS in 19min
ISI: No blow
FF: BOB immediately, guaged gas
FSI: No blow

Rec': GTS (*see top of report), 60' GMWCO (22% G, 37% O, 26% W, 15% M), 60' GMWCO (30% G, 50% O, 15% W, 5% M), 120' CGO (10% G, 90% O), 35' Water (120,000ppm)

IH: 2093# WT 9.4
IF: 52#-107# VIS 45
ISI: 668#
FF: 97#-127#
FSI: 644#
FH: 2017#

WT 9.1
VIS 51

WT 9.3
VIS 45



LS - WHT, VF / F XLN, MOD DNS / SUBCHKY, NS

RTD 4215'