



CONSOLIDATED
Oil Well Services, LLC

REMIT TO
Consolidated Oil Well Services, LLC
Dept:970
P.O.Box 4346
Houston, TX 77210-4346

MAIN OFFICE

P.O.Box 884
Chanute, KS 66720
620/431-9210, 1-800/467-8676
Fax 620/431-0012

Invoice Invoice# 803390

Invoice Date: 02/13/15 Terms: C.O.D. Page 1

LARIO OIL & GAS
P.O. BOX 1093
GARDEN CITY KS 637846
USA
3162655611

KNAPP 10-31

*Drilling after 15-011
2-17-15 JK*

Part No	Description	Quantity	Unit Price	Discount(%)	Total
5401S	Cement Pump Truck - Surface	1.000	1,150.0000	20.000	920.00
5406	Mileage Charge	10.000	5.2500	20.000	42.00
5407	Min. Bulk Delivery Charge	1.000	430.0000	20.000	344.00
1104S	Class A Cement	200.000	18.5500	20.000	2,968.00
1102	Calcium Chloride (50#)	564.000	0.9400	20.000	424.13
1118B	Premium Gel / Bentonite	376.000	0.2700	20.000	81.22
1111	Sodium Chloride (Granulated Salt)	100.000	0.0000	0.000	0.00

Subtotal 5,974.18
Discounted Amount 1,194.84
SubTotal After Discount 4,779.34

Amount Due 6,317.17 If paid after 02/13/15

Tax: 274.39
Total: 5,053.74

JK
[Signature]
FEB 20 2015
JK

SP

2131

PO 3173

9:30P



CONSOLIDATED
Oil Well Services, LLC

2012

INVOICE # 803390

TICKET NUMBER 47802

LOCATION Oakley KS

FOREMAN Jerry

PO Box 884, Chanute, KS 66720
620-431-9210 or 800-467-8676

FIELD TICKET & TREATMENT REPORT
CEMENT

KS

DATE	CUSTOMER #	WELL NAME & NUMBER	SECTION	TOWNSHIP	RANGE	COUNTY
2-11-15	4793	Knapp 10-31	31	13S	31W	Gove
CUSTOMER			Oakley S. to Mavajob			
MAILING ADDRESS			TRUCK #	DRIVER	TRUCK #	DRIVER
Lario Oil & Gas			731	Jordan L		
			693	Lance R		
CITY			STATE			
STATE			ZIP CODE			
			SS.			

JOB TYPE Surface HOLE SIZE 12 1/4 HOLE DEPTH 298 CASING SIZE & WEIGHT 9 5/8 24#
 CASING DEPTH 295 DRILL PIPE _____ TUBING _____ OTHER _____
 SLURRY WEIGHT 14.8 SLURRY VOL _____ WATER gal/sk _____ CEMENT LEFT in CASING 20'
 DISPLACEMENT 17 1/2 DISPLACEMENT PSI _____ MIX PSI _____ RATE _____

REMARKS: Softly meeting a rig up on Southwind 70 break circulation with
maxtree mix 200 sks com class A cement 3% CC 2% gel wash up & displace
with 17 1/2 bbl fresh water & shut in found cement in cellar

*Cement did
circulate*

*Thank you
Jerry & crew*

ACCOUNT CODE	QUANTITY or UNITS	DESCRIPTION of SERVICES or PRODUCT	UNIT PRICE	TOTAL
54015	1	PUMP CHARGE	1150.00	1150.00
54067	10	MILEAGE	5.25	52.50
5407	9.4	ton mileage delivery min	430.00	430.00
11095	200 sks	com class A cement	1.855	370.00
1102	564#	CC	.94	530.16
11186	376#	gel	.27	101.52
1111	100#	salt	NC	NC
			Subtotal	5974.18
			-20%	1194.84
			Subtotal	4779.34
			SALES TAX	274.39
			ESTIMATED TOTAL	5053.74

AUTHORIZATION Sam D. Frazier TITLE CM/POSTER DATE _____

I acknowledge that the payment terms, unless specifically amended in writing on the front of the form or in the customer's account records, at our office, and conditions of service on the back of this form are in effect for services identified on this form.

TERMS

In consideration of the prices to be charged for Consolidated Oil Well Services, LLC (COWS) services, equipment and products and for the performance of services and supplying of materials, Customer agrees to the following terms and conditions.

Terms. Cash in advance unless satisfactory credit is established. On credit sales, invoices are payable within 30 days of the invoice date. On all invoices not paid within 30 days, Customer agrees to pay COWS interest at the rate of 18% per annum or the maximum rate allowed by law, whichever is higher. In the event COWS retains an attorney to pursue collection of any account, Customer agrees to pay all collection costs and attorney's fees incurred by COWS.

Any applicable federal, state or local sales, use occupation, consumer's or emergency taxes shall be added to the quoted price. All process license fees required to be paid to others will be added to the scheduled prices.

All COWS' prices are subject to change without notice.

SERVICE CONDITIONS

Customer warrants that the well is in proper condition to receive the services, equipment, products and materials to be supplied by COWS. The Customer shall at all time have complete care, custody, and control of the well, the drilling and production equipment at the well, and the premises about the well. A responsible representative of the Customer shall be present to specify depths, pressures, or materials used for any service which is to be performed.

(a) COWS shall not be responsible for any claim, cause of action or demand (hereinafter referred to as a 'claim') for damage to property, or injury to or death of employees and representatives, of Customer or the well owner (if different from Customer), unless such damage, injury or death is caused by the willful misconduct or gross negligence of COWS, including but not limited to sub-surface damage and surface damage arising from sub-surface damage.

(b) Unless a claim is the result of the sole willful misconduct or gross negligence of COWS, Customer shall be responsible for and indemnify and hold COWS harmless from any claim for: (1) reservoir loss or damage, or property damage resulting from sub-surface pressure, losing control of the well and/or a well blowout; (2) damages as a result of a subsurface trespass, or an action in the nature thereof, arising from a service operation performed by COWS; (3) injury to or death of persons, other than employees of COWS, or damage to property (including, but not limited to, injury to the well), or any damages whatsoever, irrespective of cause, growing out of or in any way connected with the use of radioactive material in the well hole; and (4) well damage or reservoir damage caused by (i) loss of circulation, cement invasion, cement misplacement, pumping cement or cement plugs on wells with loss of circulation, including the failure to displace plug to proper depth, (ii) sub-surface pressure and resulting failure to complete pumping of cement or cement plug, including dehydration of cement slurry or flashing, plugged float shoe, annulus bridging or plugging, or (iii) down hole tools being lost or left in the well, or becoming stuck in the well for any reason and by any cause. COWS may furnish down hole tools and may supply supervision for the running and placement of such tools but will not be liable for any damage, loss or result caused by the use of such tools.

Furthermore, Customer will be responsible for the cost to replace such tools if they are lost or left in the well.

(c) COWS makes no guarantee of the effectiveness of any COWS' products, supplies or materials, or the results of any COWS' treatment or services.

(d) Because of the uncertainty of variable well conditions and the necessity of relying on facts and supporting services furnished by others, COWS is unable to guarantee the accuracy of any chart interpretation, research analysis, job recommendation or other data furnished by COWS. COWS' personnel will use their best efforts in gathering such information and their best judgement in interpreting it, but Customer agrees that COWS shall not be responsible for any damage arising from the use of such information except where due to COWS' gross negligence or willful misconduct in the preparation or furnishing of it.

(e) COWS may buy and re-sell to Customer down hole equipment, including but not limited to float equipment, DV tools, port collars, type A & B packers, and Customer agrees that COWS is not an agent or dealer for the companies who manufacture such items, and further agrees that Customer shall be solely responsible for and indemnify COWS against any claim with regard to the effectiveness, malfunction of, or functionality of such items.

WARRANTIES - LIMITATION OF LIABILITY

COWS warrants title to the products, supplies and materials, and that the same are free from defects in workmanship and materials. THERE ARE NO OTHER WARRANTIES, EXPRESS OR IMPLIED, NOR ANY WARRANTY OF MERCHANTABILITY OR FITNESS FOR PURPOSE, WHICH EXTEND BEYOND THOSE STATED IN THE IMMEDIATELY PRECEDING SENTENCE. COWS's liability and Customer's exclusive remedy in any claim (whether in contract, tort, breach of warranty or otherwise,) arising out of the sale or use of any COWS' products, supplies, materials or services is expressly limited to the replacement of such products, supplies, materials or services or their return to COWS or, at COWS' option, an allowance to Customer of credit for the cost of such items.

Customer waives and releases all claims against COWS for any special, incidental, indirect, consequential or punitive damages.



CONSOLIDATED
Oil Well Services, LLC

REMIT TO
Consolidated Oil Well Services, LLC
Dept:970
P.O.Box 4346
Houston, TX 77210-4346

MAIN OFFICE

P.O.Box 884
Chanute, KS 66720
620/431-9210, 1-800/467-8676
Fax 620/431-0012

Invoice Invoice# 803469

Invoice Date: 02/23/15 Terms: C.O.D. Page 1

LARIO OIL & GAS

P.O. BOX 1093
GARDEN CITY KS 637846
USA
3162655611

KANPP 10-31

Knapp 10-31
Drilling of 15-011
2-26-15 LK

Part No	Description	Quantity	Unit Price	Discount(%)	Total
5401C	Single Pump	1.000	3,175.0000	20.000	2,540.00
5406	Mileage Charge	10.000	5.2500	20.000	42.00
5407	Min. Bulk Delivery Charge	1.000	445.5500	20.000	356.44
1126	Oil Well Cement	130.000	23.7000	20.000	2,464.80
1110A	Kol Seal (50# BAG)	650.000	0.5600	20.000	291.20
1131	60/40 Poz Mix	450.000	15.8600	20.000	5,709.60
1118B	Premium Gel / Bentonite	3,096.000	0.2700	20.000	668.74
1107	Flo-Seal	113.000	2.9700	20.000	268.49
1144G-0130	Mud Flush - Oakley	500.000	1.0000	20.000	400.00
4104	Cement Basket 5 1/2	1.000	290.0000	20.000	232.00
4130	16	16.000	61.0000	20.000	780.80
4159	Float Shoe AFU 5 1/2	1.000	433.7500	20.000	347.00
4277A	DV Tool Weatherford 5 1/2	1.000	4,900.0000	20.000	3,920.00
4454	5 1/2 Latch Down Plug	1.000	567.0000	20.000	453.60
1111	Sodium Chloride (Granulated Salt)	200.000	0.0000	0.000	0.00

Subtotal 23,093.33

Discounted Amount 4,618.67

SubTotal After Discount 18,474.66

Amount Due 24,627.53 If paid after 02/23/15

Handwritten signature
MAR - 2 2015
Handwritten initials

Tax: 1,227.36

Total: 19,702.03

SA

2244

PO 3315, 16, 17

6PM



CONSOLIDATED
Oil Well Services, LLC

2158
INVOICE #803469

TICKET NUMBER 47808
LOCATION Oakley Ks
FOREMAN Jerry Y
Wiles

PO Box 884, Chanute, KS 66720
620-431-9210 or 800-467-8676

FIELD TICKET & TREATMENT REPORT
CEMENT

KS

DATE	CUSTOMER #	WELL NAME & NUMBER	SECTION	TOWNSHIP	RANGE	COUNTY
222-15	4793	Knapp 10-31	31	13	31	Gove
CUSTOMER <u>Lario Oil & Gas</u>			Oakley 5 to 10 No. 10 6 to 10 4 1/2, 4 1/2 5, 5 1/2			
MAILING ADDRESS			TRUCK #	DRIVER	TRUCK #	DRIVER
CITY			445	Jordan L		
STATE			479	Jerry H		
ZIP CODE			456-7121	Rob S		

JOB TYPE 2 Stage HOLE SIZE 7 7/8 HOLE DEPTH 4698 CASING SIZE & WEIGHT 5 1/2 14#
 CASING DEPTH 4685 DRILL PIPE _____ TUBING _____ OTHER DV @ 2474
 SLURRY WEIGHT 142/12.5 SLURRY VOL 1.42 / 1.81 WATER gal/sk _____ CEMENT LEFT in CASING 21'
 DISPLACEMENT 113 / 60 3/4 DISPLACEMENT PSI _____ MIX PSI _____ RATE _____

REMARKS: Salty, messy & dry upon South wind 70 run flat equip. centralizers on 1, 4, 6, 8, 10, 12, 14, 16, 18, 20, 22, 24, 26, 28, 30, 32, 34, 36, 38, 40, 42, 44, 46, 48, 50, 52, 54, 56 basket on 5 1/2 DV Tool on top 54 @ 2474 run casing to bottom circulate 1 1/2 hrs pump 566l H₂O, mud flush, 566l spacer mix 130 sks OWC 4 1/2# Kol seal, clean pumps & lines & release plug & displacer with 114 bbl (50 bbl 64 mud) final lift 800# plug landed @ 1300# released back flat held hook to mud tree & circulate after opening tool. 3 hrs pump 566l H₂O ahead mix 30 sks Rh & 4200 sks 60/40 pozmix 8% gel 4# Plow seal down center shot chn, release plug with pump & lines & displacer with 161 bbl H₂O final lift 700# plug landed & tool closed @ 1500# released back & shot hold circulate approx 50 sks to pit 30 sks Rh Cement did circulate

Thank you Jerry & crew

ACCOUNT CODE	QUANTITY or UNITS	DESCRIPTION of SERVICES or PRODUCT	UNIT PRICE	TOTAL
5401C	1	PUMP CHARGE	3175 ⁰⁰	3175 ⁰⁰
5406	10	MILEAGE	5 ²⁵	52 ⁵⁰
5407	25.46	for mileage delivery	1 ⁵⁵	445 ⁵⁵
1126	130 sks	OWC	23 ⁷⁰	3081 ⁰⁰
110A	650 #	Kol seal	5 ¹⁵	3345 ⁰⁰
1131	450 sks	60/40 pozmix	15 ⁸⁰	7137 ⁰⁰
1186	3096 #	gel	27	8359 ²
1107	113 #	Plow seal	2 ⁹²	3356 ¹
1194	500 gal	mud flush	1 ⁰⁰	500 ⁰⁰
4104	1	5 1/2 basket	290 ⁰⁰	290 ⁰⁰
4130	16	5 1/2 centralizers	61 ⁰⁰	976 ⁰⁰
4159	1	5 1/2 AFU shot shoe	433 ²⁵	433 ²⁵
4277A	1	5 1/2 DV tool	4900 ⁰⁰	4900 ⁰⁰
4454	1	5 1/2 latch chn assy	567 ⁰⁰	567 ⁰⁰
111	200 #	salt	nc	nc
			Sub total	23093 ³³
			-20% disc	4618.16 ⁷
			Sub total	18474.16 ⁶
			SALES TAX	127.36

Ravin 3737
 ESTIMATED TOTAL **19,702.03**
 AUTHORIZATION Jerry Wiles TITLE _____ DATE _____

I acknowledge that the payment terms, unless specifically amended in writing on the front of the form or in the customer's account records, at our office, and conditions of service on the back of this form are in effect for services identified on this form.

Consolidated oil well services

Friday, January 02, 2015
10:25 AM

cement bid for: LARIO OIL&GAS

Type of job PRODUCTION 5 1/2-4750',1,150' FILL, DV@2350'
Lease- KNAPP #10-31
County-GOVE
State- KS
Legals-SEC 31-13S-31W

BOTTOM STAGE: 180 SKS OWC,5# KOLSEAL,500 GAL MUD FLUSH
YIELD 1.42@13.8
TOP STAGE: 450 SKS 60/40POZ,8%GEL,1/4# FLO SEAL
YIELD 1.89@12.5

Pump truck- 3,175.00
10 miles- 52.50
TOTAL=3,,227.50

180 SKS OWC-4,266.00
450 SKS 60/40POZ-7,137.00
3,096# GEL - 835.92
900# KOLSEAL-504.00
113# FLOSEAL-335.61
500 GAL MUD
FLUSH -500.00
27.81 TON MILES-486.70
TOTAL= 14,065.23

FLOAT EQUIPMENT 5 1/2
1-AFU FLOAT SHOE- 433.75
1-LATCH DOWN ASSY-567.00
16-CENTRALIZERS- 976.00
1-BASKET - 290.00
1-DV TOOL - 4,900.00
TOTAL= 7,166.75

PUMPTRUCK- 3,227.50
MATERIAL- 14,065.23
FLOAT EQUIPMENT-7,166.75
SUB TOTAL=24,459.48
LESS 20% - 4,891.90
TOTAL= 19,567.58

TAX INCLUDED AT INVOICING

BID BY: WALT DINKEL

TERMS

In consideration of the prices to be charged for Consolidated Oil Well Services, LLC (COWS) services, equipment and products and for the performance of services and supplying of materials, Customer agrees to the following terms and conditions.

Terms. Cash in advance unless satisfactory credit is established. On credit sales, invoices are payable within 30 days of the invoice date. On all invoices not paid within 30 days, Customer agrees to pay COWS interest at the rate of 18% per annum or the maximum rate allowed by law, whichever is higher. In the event COWS retains an attorney to pursue collection of any account, Customer agrees to pay all collection costs and attorney's fees incurred by COWS.

Any applicable federal, state or local sales, use occupation, consumer's or emergency taxes shall be added to the quoted price. All process license fees required to be paid to others will be added to the scheduled prices.

All COWS' prices are subject to change without notice.

SERVICE CONDITIONS

Customer warrants that the well is in proper condition to receive the services, equipment, products and materials to be supplied by COWS. The Customer shall at all time have complete care, custody, and control of the well, the drilling and production equipment at the well, and the premises about the well. A responsible representative of the Customer shall be present to specify depths, pressures, or materials used for any service which is to be performed.

(a) COWS shall not be responsible for any claim, cause of action or demand (hereinafter referred to as a 'claim') for damage to property, or injury to or death of employees and representatives, of Customer or the well owner (if different from Customer), unless such damage, injury or death is caused by the willful misconduct or gross negligence of COWS, including but not limited to sub-surface damage and surface damage arising from sub-surface damage.

(b) Unless a claim is the result of the sole willful misconduct or gross negligence of COWS, Customer shall be responsible for and indemnify and hold COWS harmless from any claim for: (1) reservoir loss or damage, or property damage resulting from sub-surface pressure, losing control of the well and/or a well blowout, (2) damages as a result of a subsurface trespass, or an action in the nature thereof, arising from a service operation performed by COWS; (3) injury to or death of persons, other than employees of COWS, or damage to property (including, but not limited to, injury to the well), or any damages whatsoever, irrespective of cause, growing out of or in any way connected with the use of radioactive material in the well hole; and (4) well damage or reservoir damage caused by (i) loss of circulation, cement invasion, cement misplacement, pumping cement or cement plugs on wells with loss of circulation, including the failure to displace plug to proper depth, (ii) sub-surface pressure and resulting failure to complete pumping of cement or cement plug, including dehydration of cement slurry or flashing, plugged float shoe, annulus bridging or plugging, or (iii) down hole tools being lost or left in the well, or becoming stuck in the well for any reason and by any cause. COWS may furnish down hole tools and may supply supervision for the running and placement of such tools but will not be liable for any damage, loss or result caused by the use of such tools.

Furthermore, Customer will be responsible for the cost to replace such tools if they are lost or left in the well.

(c) COWS makes no guarantee of the effectiveness of any COWS' products, supplies or materials, or the results of any COWS' treatment or services.

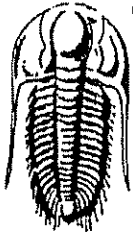
(d) Because of the uncertainty of variable well conditions and the necessity of relying on facts and supporting services furnished by others, COWS is unable to guarantee the accuracy of any chart interpretation, research analysis, job recommendation or other data furnished by COWS. COWS' personnel will use their best efforts in gathering such information and their best judgement in interpreting it, but Customer agrees that COWS shall not be responsible for any damage arising from the use of such information except where due to COWS' gross negligence or willful misconduct in the preparation or furnishing of it.

(e) COWS may buy and re-sell to Customer down hole equipment, including but not limited to float equipment, DV tools, port collars, type A & B packers, and Customer agrees that COWS is not an agent or dealer for the companies who manufacture such items, and further agrees that Customer shall be solely responsible for and indemnify COWS against any claim with regard to the effectiveness, malfunction of, or functionality of such items.

WARRANTIES - LIMITATION OF LIABILITY

COWS warrants title to the products, supplies and materials, and that the same are free from defects in workmanship and materials. THERE ARE NO OTHER WARRANTIES, EXPRESS OR IMPLIED, NOR ANY WARRANTY OF MERCHANTABILITY OR FITNESS FOR PURPOSE WHICH EXTEND BEYOND THOSE STATED IN THE IMMEDIATELY PRECEDING SENTENCE. COWS's liability and Customer's exclusive remedy in any claim (whether in contract, tort, breach of warranty or otherwise,) arising out of the sale or use of any COWS' products, supplies, materials or services is expressly limited to the replacement of such products, supplies, materials or services or their return to COWS, or, at COWS' option, an allowance to Customer of credit for the cost of such items.

Customer waives and releases all claims against COWS for any special, incidental, indirect, consequential or punitive damages.



TRILOBITE TESTING, INC.

DRILL STEM TEST REPORT

Lario Oil and Gas
 301 S. Market St
 Wichita KS 67202
 ATTN: Bob Bayer

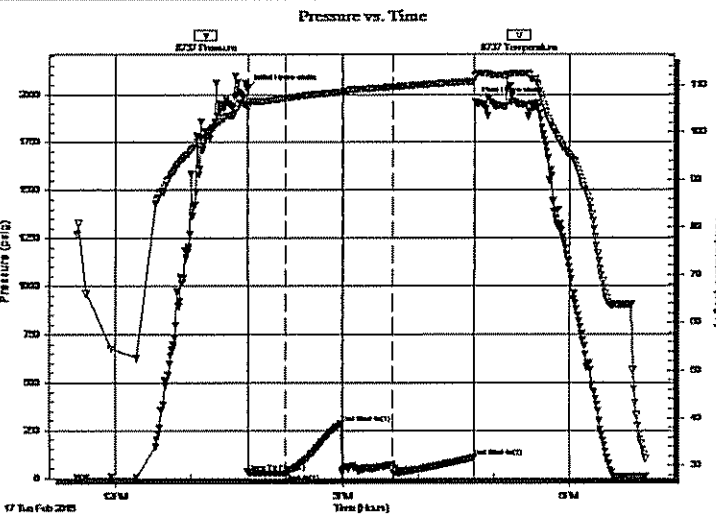
31-13s-31w Gove Co KS
Knapp 10-31
 Job Ticket: 58574 DST#: 1
 Test Start: 2015.02.17 @ 11:30:00

GENERAL INFORMATION:

Formation: H
 Deviated: No Whipstock: ft (KB)
 Time Tool Opened: 15:58:30
 Time Test Ended: 21:14:15
 Interval: 4120.00 ft (KB) To 4150.00 ft (KB) (TVD)
 Total Depth: 4150.00 ft (KB) (TVD)
 Hole Diameter: 7.88 inches Hole Condition: Fair
 Test Type: Conventional Bottom Hole (Initial)
 Tester: Mike Roberts
 Unit No: 65
 Reference Elevations: 2951.00 ft (KB)
 2939.00 ft (CF)
 KB to GR/CF: 12.00 ft

Serial #: 8737 Outside
 Press@RunDepth: 73.31 psig @ 4145.00 ft (KB) Capacity: 8000.00 psig
 Start Date: 2015.02.17 End Date: 2015.02.17 Last Calib.: 2015.02.17
 Start Time: 11:30:00 End Time: 19:01:00 Time On Btm: 2015.02.17 @ 13:44:45
 Time Off Btm: 2015.02.17 @ 16:44:30

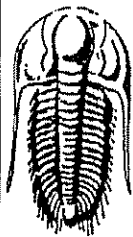
TEST COMMENT: IF:Built to 2" blow
 IS:No return blow
 FF:Built to 1" blow
 FS:No return blow



PRESSURE SUMMARY			
Time (Min.)	Pressure (psig)	Temp (deg F)	Annotation
0	2028.82	105.70	Initial Hydro-static
1	28.55	105.83	Open To Flow (1)
31	26.14	107.14	Shut-In(1)
75	285.84	108.44	End Shut-In(1)
75	35.01	108.42	Open To Flow (2)
115	73.31	109.47	Shut-In(2)
180	107.73	110.74	End Shut-In(2)
180	1963.41	111.72	Final Hydro-static

Recovery		
Length (ft)	Description	Volume (bbl)
30.00	ocm 4%o 96%m	0.42

Gas Rates			
	Choke (inches)	Pressure (psig)	Gas Rate (MMcf/d)



**TRILOBITE
TESTING, INC.**

DRILL STEM TEST REPORT

FLUID SUMMARY

Lario Oil and Gas

31-13s-31w Gove Co KS

301 S. Market St
Wichita KS 67202

Knapp 10-31

Job Ticket: 58574

DST#: 1

ATTN: Bob Bayer

Test Start: 2015.02.17 @ 11:30:00

Mud and Cushion Information

Mud Type: Gel Chem

Cushion Type:

Oil API:

0 deg API

Mud Weight: 9.00 lb/gal

Cushion Length:

ft

Water Salinity:

0 ppm

Viscosity: 60.00 sec/qt

Cushion Volume:

bbbl

Water Loss: 7.18 in³

Gas Cushion Type:

Resistivity: 0.00 ohm.m

Gas Cushion Pressure:

psig

Salinity: 3500.00 ppm

Filter Cake: 1.00 inches

Recovery Information

Recovery Table

Length ft	Description	Volume bbl
30.00	ocm 4%o 96%m	0.421

Total Length: 30.00 ft

Total Volume: 0.421 bbl

Num Fluid Samples: 0

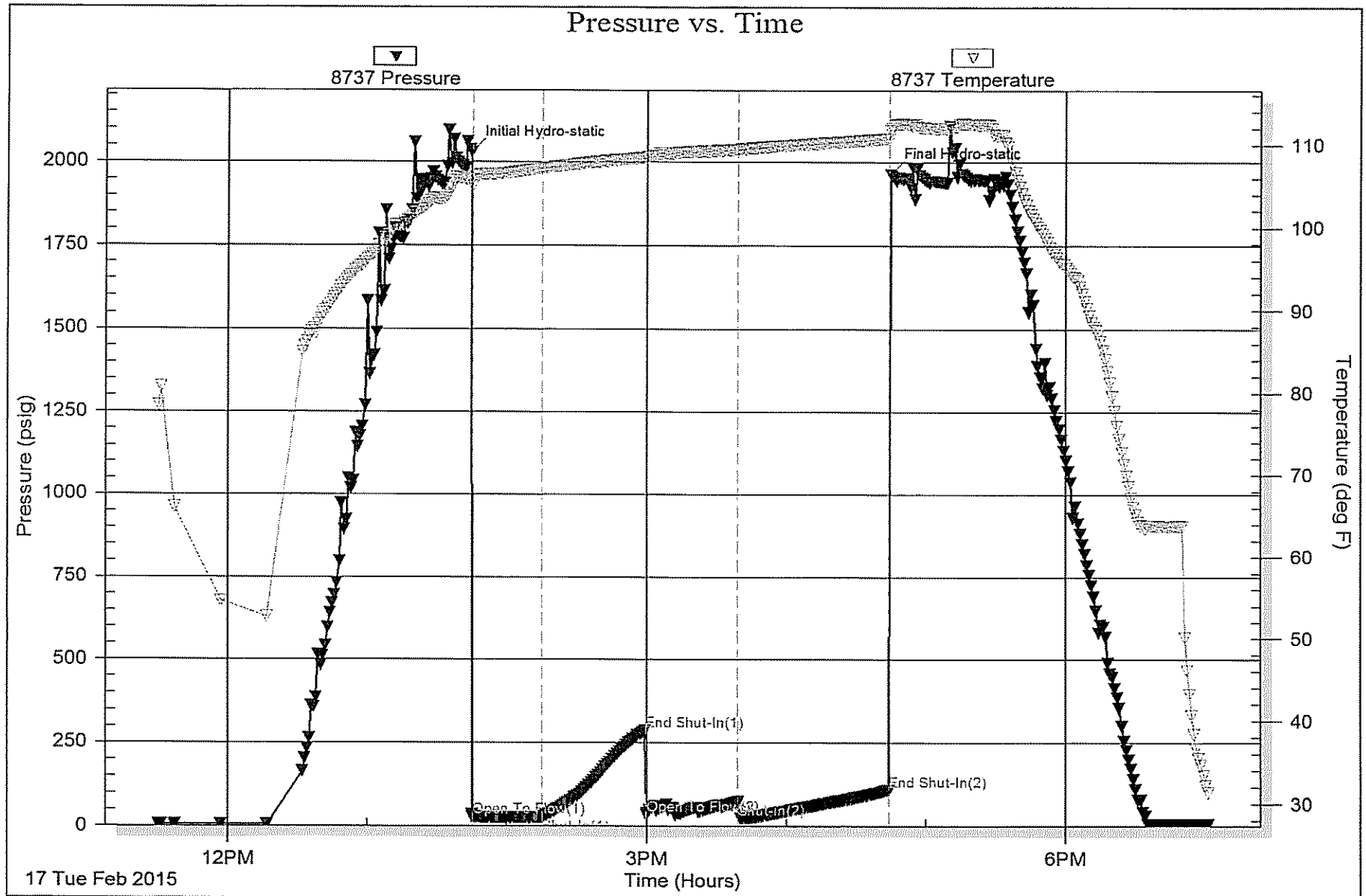
Num Gas Bombs: 0

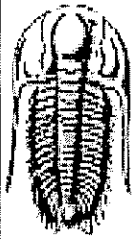
Serial #:

Laboratory Name:

Laboratory Location:

Recovery Comments:





TRILOBITE TESTING, INC.

DRILL STEM TEST REPORT

Lario Oil and Gas

31-13s-31w Gove,KS

301 S. Market St
Wichita KS 67202

Knapp #10-31

Job Ticket: 58575

DST#: 2

ATTN: Bob Bayer

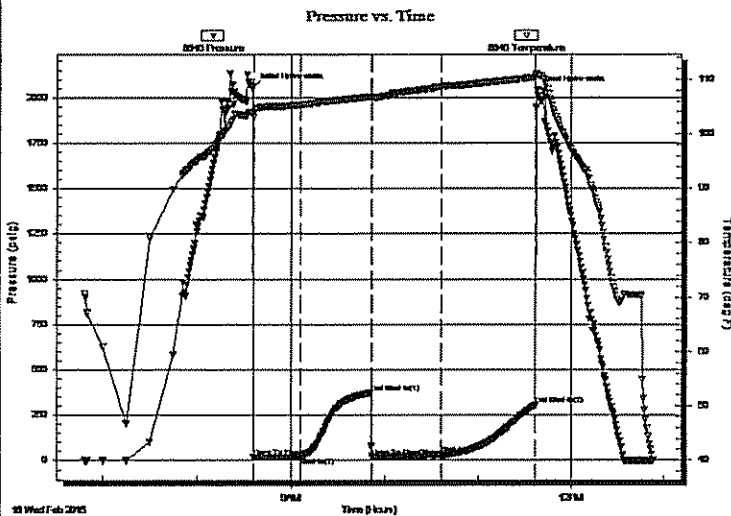
Test Start: 2015.02.18 @ 06:48:15

GENERAL INFORMATION:

Formation: J
 Deviated: No Whipstock: ft (KB)
 Time Tool Opened: 08:36:15
 Time Test Ended: 12:53:15
 Interval: 4180.00 ft (KB) To 4210.00 ft (KB) (TVD)
 Total Depth: 4210.00 ft (KB) (TVD)
 Hole Diameter: 7.88 inches Hole Condition: Fair
 Test Type: Conventional Bottom Hole (Reset)
 Tester: Mike Roberts
 Unit No: 65
 Reference Elevations: 2951.00 ft (KB)
 2939.00 ft (CF)
 KB to GR/CF: 12.00 ft

Serial #: 8846 Inside
 Press@RunDepth: 35.14 psig @ 4205.00 ft (KB) Capacity: 8000.00 psig
 Start Date: 2015.02.18 End Date: 2015.02.18 Last Calib.: 2015.02.18
 Start Time: 06:48:15 End Time: 12:53:15 Time On Btm: 2015.02.18 @ 08:36:00
 Time Off Btm: 2015.02.18 @ 11:37:45

TEST COMMENT: IF:Built to 1/2" blow
 IS:No return blow
 FF:No blow
 FS:No return blow



PRESSURE SUMMARY

Time (Min.)	Pressure (psig)	Temp (deg F)	Annotation
0	2055.70	104.07	Initial Hydro-static
1	20.13	103.07	Open To Flow (1)
30	20.15	105.40	Shut-In(1)
75	373.20	106.88	End Shut-In(1)
76	21.68	106.76	Open To Flow (2)
120	35.14	108.70	Shut-In(2)
181	304.83	110.42	End Shut-In(2)
182	2039.79	111.13	Final Hydro-static

Recovery

Length (ft)	Description	Volume (bbl)
20.00	mud with oil spots	0.28

Gas Rates

Choke (Inches)	Pressure (psig)	Gas Rate (MMcf/d)

* Recovery from multiple tests



**TRILOBITE
TESTING, INC.**

DRILL STEM TEST REPORT

FLUID SUMMARY

Lario Oil and Gas

31-13s-31w Gove,KS

301 S. Market St
Wichita KS 67202

Knapp #10-31

Job Ticket: 58575

DST#: 2

ATTN: Bob Bayer

Test Start: 2015.02.18 @ 06:48:15

Mud and Cushion Information

Mud Type: Gel Chem

Cushion Type:

Oil API:

0 deg API

Mud Weight: 9.00 lb/gal

Cushion Length:

ft

Water Salinity:

0 ppm

Viscosity: 60.00 sec/qt

Cushion Volume:

bbf

Water Loss: 7.19 in²

Gas Cushion Type:

Resistivity: 0.00 ohm.m

Gas Cushion Pressure:

psig

Salinity: 3500.00 ppm

Filter Cake: 1.00 inches

Recovery Information

Recovery Table

Length ft	Description	Volume bbf
20.00	mud with oil spots	0.281

Total Length: 20.00 ft Total Volume: 0.281 bbf

Num Fluid Samples: 0

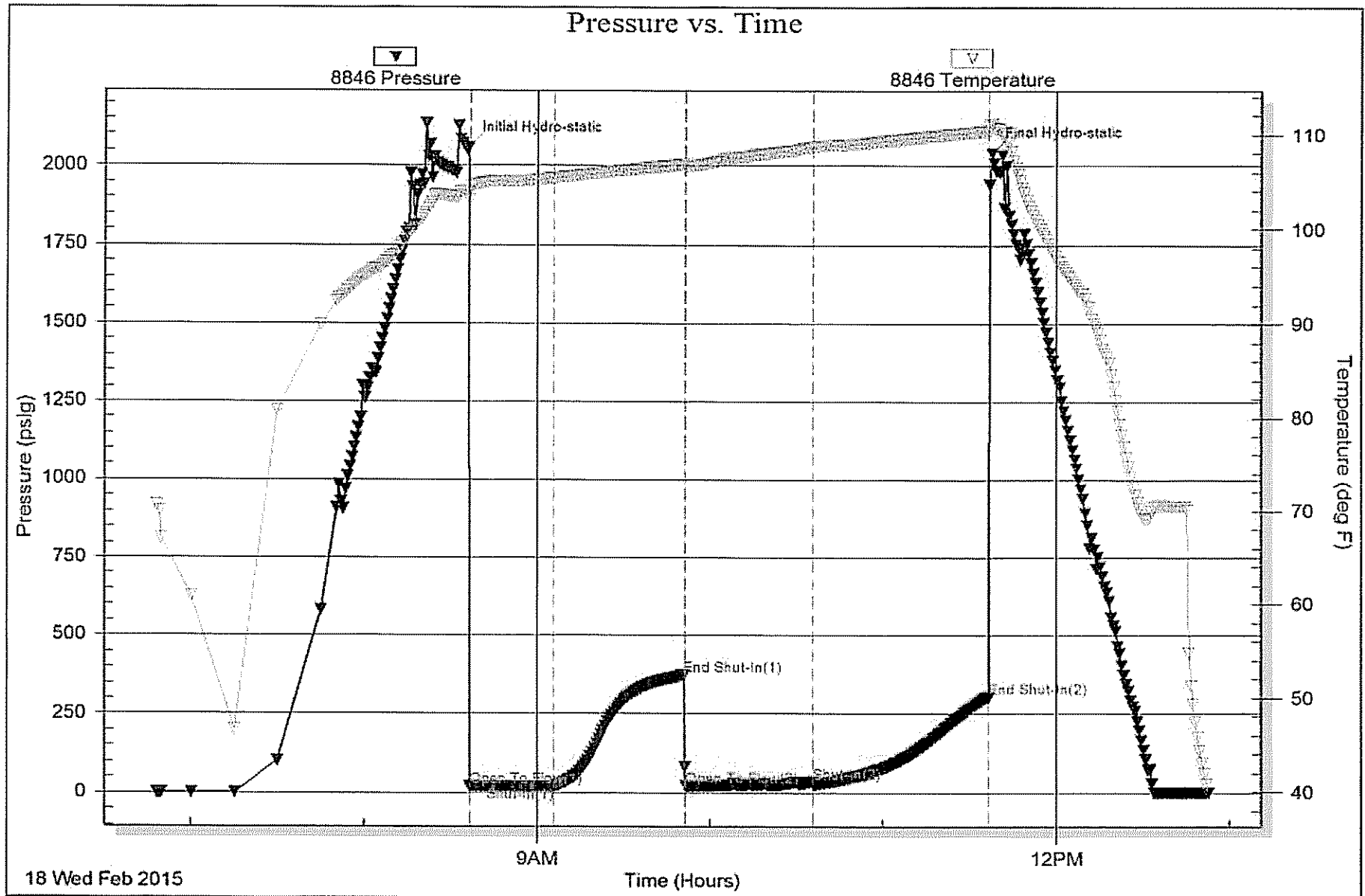
Num Gas Bombs: 0

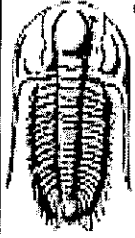
Serial #:

Laboratory Name:

Laboratory Location:

Recovery Comments:





TRILOBITE TESTING, INC.

DRILL STEM TEST REPORT

Lario Oil and Gas

31-13s-31w Gove Co KS

301 S. Market St
Wichita KS 67202

Knapp 10-31

Job Ticket: 61401

DST#: 3

ATTN: Bob Bayer

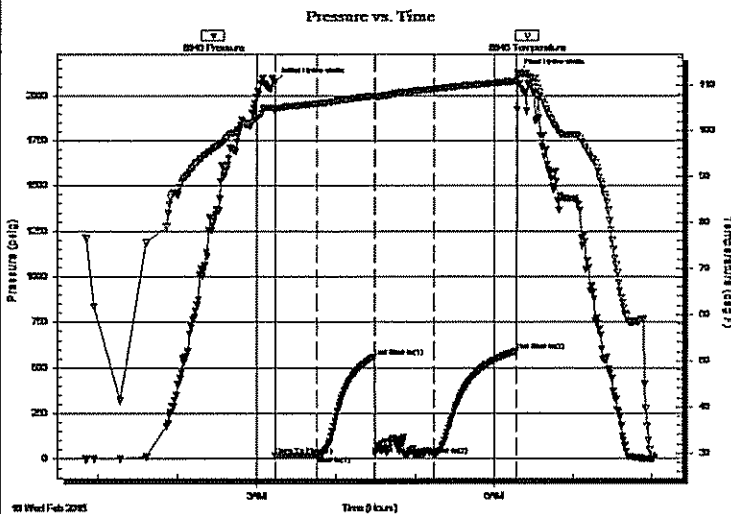
Test Start: 2015.02.18 @ 00:05:15

GENERAL INFORMATION:

Formation: L
 Deviated: No Whipstock: ft (KB)
 Time Tool Opened: 02:29:15
 Time Test Ended: 07:18:00
 Test Type: Conventional Bottom Hole (Reset)
 Tester: Mike Roberts
 Unit No: 65
 Interval: 4245.00 ft (KB) To 4280.00 ft (KB) (TVD)
 Reference Elevations: 2951.00 ft (KB)
 Total Depth: 4280.00 ft (KB) (TVD)
 2939.00 ft (CF)
 Hole Diameter: 7.88 inches Hole Condition: Fair
 KB to GR/CF: 12.00 ft

Serial #: 8846 Inside
 Press@RunDepth: 19.65 psig @ 4275.00 ft (KB) Capacity: 8000.00 psig
 Start Date: 2015.02.18 End Date: 2015.02.18 Last Calib.: 2015.02.19
 Start Time: 00:50:00 End Time: 08:02:45 Time On Btm: 2015.02.18 @ 03:13:45
 Time Off Btm: 2015.02.18 @ 06:17:30

TEST COMMENT: IF: Built to 1/4" blow
 IS: No return blow
 FF: No blow
 FS: No return blow



PRESSURE SUMMARY

Time (Min.)	Pressure (psig)	Temp (deg F)	Annotation
0	2074.22	104.98	Initial Hydro-static
1	16.92	104.07	Open To Flow (1)
32	18.35	105.92	Shut-In(1)
76	561.03	107.60	End Shut-In(1)
76	23.31	107.46	Open To Flow (2)
120	19.65	109.10	Shut-In(2)
183	591.24	110.84	End Shut-In(2)
184	2125.59	112.34	Final Hydro-static

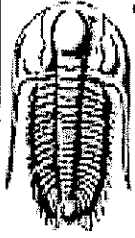
Recovery

Length (ft)	Description	Volume (bbl)
5.00	m 100% m	0.07

* Recovery from multiple tests

Gas Rates

Choke (inches)	Pressure (psig)	Gas Rate (MMcf/d)



**TRILOBITE
TESTING, INC.**

DRILL STEM TEST REPORT

FLUID SUMMARY

Lario Oil and Gas

31-13s-31w Gove Co KS

301 S. Market St
Wichita KS 67202

Knapp 10-31

Job Ticket: 61401

DST#: 3

ATTN: Bob Bayer

Test Start: 2015.02.18 @ 00:05:15

Mud and Cushion Information

Mud Type: Gel Chem

Cushion Type:

Oil API:

0 deg API

Mud Weight: 9.00 lb/gal

Cushion Length:

ft

Water Salinity:

0 ppm

Viscosity: 51.00 sec/qt

Cushion Volume:

bbl

Water Loss: 7.98 in³

Gas Cushion Type:

Resistivity: 0.00 ohm.m

Gas Cushion Pressure:

psig

Salinity: 2400.00 ppm

Filter Cake: 1.00 inches

Recovery Information

Recovery Table

Length ft	Description	Volume bbl
5.00	m 100% m	0.070

Total Length: 5.00 ft

Total Volume: 0.070 bbl

Num Fluid Samples: 0

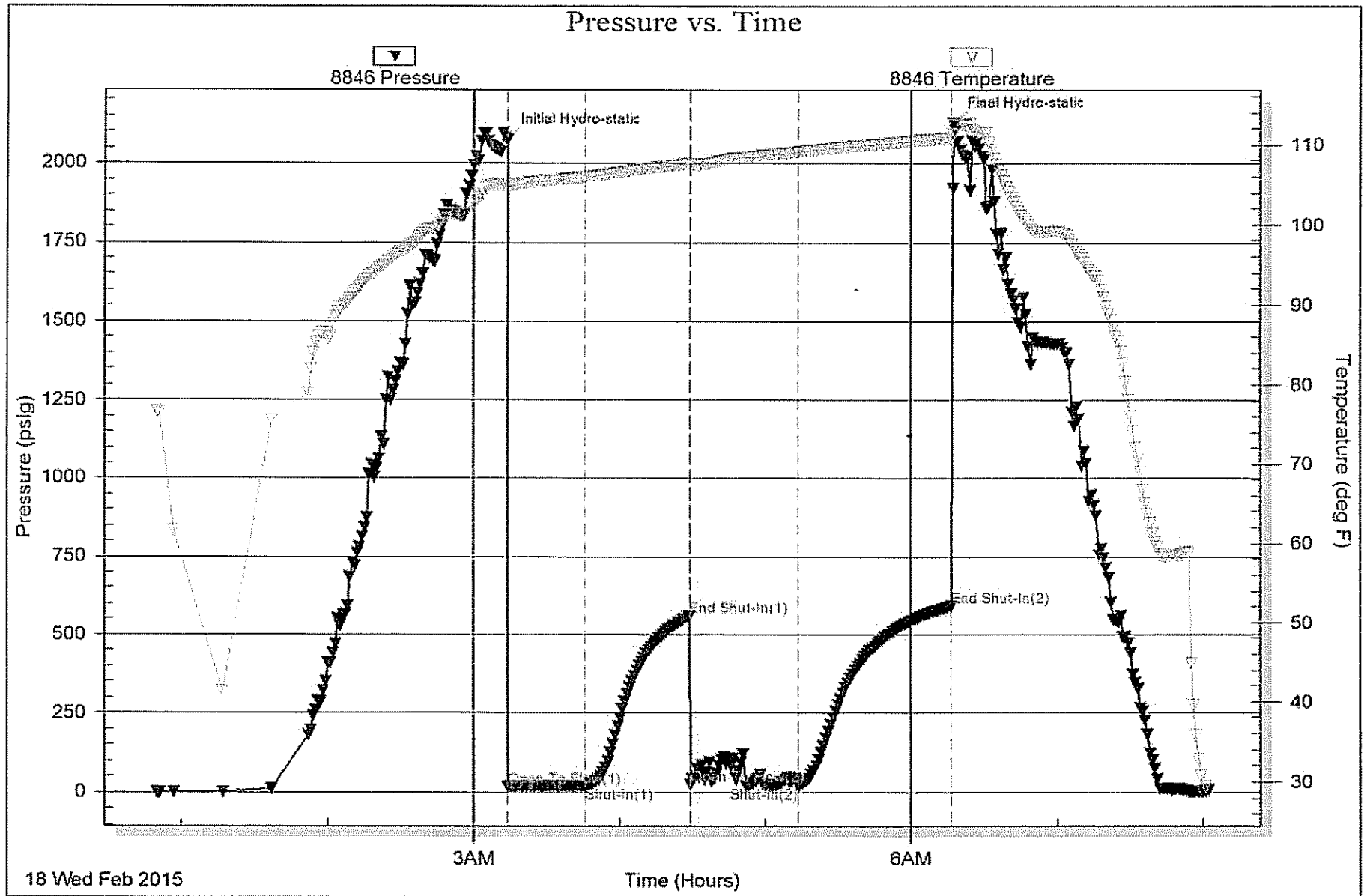
Num Gas Bombs: 0

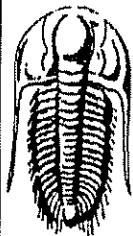
Serial #:

Laboratory Name:

Laboratory Location:

Recovery Comments:





**TRILOBITE
TESTING, INC.**

DRILL STEM TEST REPORT

Lario Oil and Gas

31-13s-31w Gove Co KS

301 S. Market St
Wichita KS 67202

Knapp 10-31

Job Ticket: 61402

DST#: 4

ATTN: Bob Bayer

Test Start: 2015.02.20 @ 14:22:15

GENERAL INFORMATION:

Formation: **Cherokee LS**

Deviated: No Whipstock: ft (KB)

Time Tool Opened: 16:15:15

Time Test Ended: 21:04:45

Test Type: Conventional Bottom Hole (Reset)

Tester: Mike Roberts

Unit No: 65

Interval: **4498.00 ft (KB) To 4560.00 ft (KB) (TVD)**

Total Depth: 4560.00 ft (KB) (TVD)

Hole Diameter: 7.88 inches Hole Condition: Fair

Reference Elevations: 2951.00 ft (KB)

2939.00 ft (CF)

KB to GR/CF: 12.00 ft

Serial #: 8846

Inside

Press@RunDepth: 45.62 psig @ 4501.00 ft (KB)

Start Date: 2015.02.20

End Date: 2015.02.20

Start Time: 14:22:15

End Time: 21:04:45

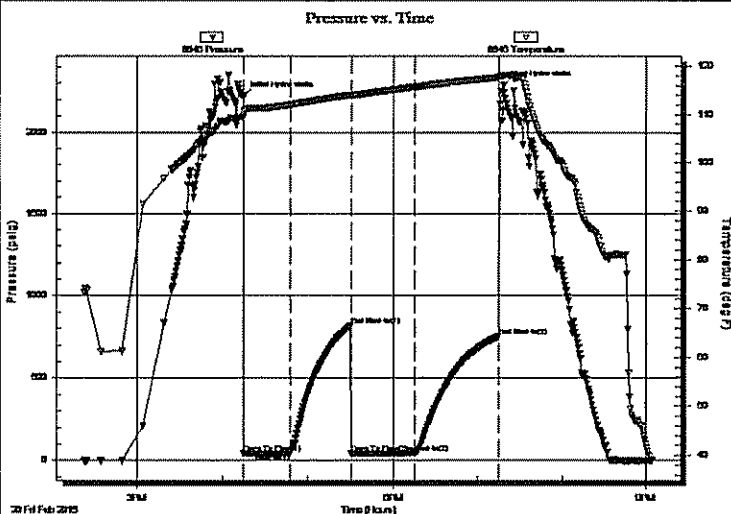
Capacity: 8000.00 psig

Last Calib.: 2015.02.20

Time On Btm: 2015.02.20 @ 16:14:45

Time Off Btm: 2015.02.20 @ 19:18:00

TEST COMMENT: IF: Built to 1" blow
IS: No return blow
FF: No blow
FS: No return blow



PRESSURE SUMMARY

Time (Min.)	Pressure (psig)	Temp (deg F)	Annotation
0	2220.30	109.60	Initial Hydro-static
1	43.28	109.89	Open To Flow (1)
33	43.41	112.03	Shut-In(1)
76	818.02	114.13	End Shut-In(1)
76	44.73	113.92	Open To Flow (2)
121	45.62	115.73	Shut-In(2)
180	752.90	117.68	End Shut-In(2)
184	2287.12	118.02	Final Hydro-static

Recovery

Length (ft)	Description	Volume (bbl)
20.00	m 100% mud	0.28

Gas Rates

	Choke (Inches)	Pressure (psig)	Gas Rate (MMcf/d)

* Recovery from multiple tests



**TRILOBITE
TESTING, INC.**

DRILL STEM TEST REPORT

FLUID SUMMARY

Lario Oil and Gas

31-13s-31w Gove Co KS

301 S. Market St
Wichita KS 67202

Knapp 10-31

Job Ticket: 61402

DST#: 4

ATTN: Bob Bayer

Test Start: 2015.02.20 @ 14:22:15

Mud and Cushion Information

Mud Type: Gel Chem

Cushion Type:

Oil API:

0 deg API

Mud Weight: 9.00 lb/gal

Cushion Length:

ft

Water Salinity:

0 ppm

Viscosity: 60.00 sec/qt

Cushion Volume:

bbl

Water Loss: 7.98 in³

Gas Cushion Type:

Resistivity: 0.00 ohm.m

Gas Cushion Pressure:

psig

Salinity: 2400.00 ppm

Filter Cake: 1.00 inches

Recovery Information

Recovery Table

Length ft	Description	Volume bbl
20.00	m 100% mud	0.281

Total Length: 20.00 ft Total Volume: 0.281 bbl

Num Fluid Samples: 0

Num Gas Bombs: 0

Serial #:

Laboratory Name:

Laboratory Location:

Recovery Comments:

