



TEMPORARY ABANDONMENT WELL APPLICATION

All blanks must be complete

OPERATOR: License# _____
Name: _____
Address 1: _____
Address 2: _____
City: _____ State: _____ Zip: _____ + _____
Contact Person: _____
Phone: (_____) _____
Contact Person Email: _____
Field Contact Person: _____
Field Contact Person Phone: (_____) _____

API No. 15- _____
Spot Description: _____
____ - ____ - ____ - ____ Sec. _____ Twp. _____ S. R. _____ E W
_____ feet from N / S Line of Section
_____ feet from E / W Line of Section
GPS Location: Lat: _____, Long: _____
(e.g. xx.xxxxx) (e.g. -xxx.xxxxx)
Datum: NAD27 NAD83 WGS84
County: _____ Elevation: _____ GL KB
Lease Name: _____ Well #: _____
Well Type: (check one) Oil Gas OG WSW Other: _____
 SWD Permit #: _____ ENHR Permit #: _____
 Gas Storage Permit #: _____
Spud Date: _____ Date Shut-In: _____

	Conductor	Surface	Production	Intermediate	Liner	Tubing
Size						
Setting Depth						
Amount of Cement						
Top of Cement						
Bottom of Cement						

Casing Fluid Level from Surface: _____ How Determined? _____ Date: _____
Casing Squeeze(s): _____ to _____ w / _____ sacks of cement, _____ to _____ w / _____ sacks of cement. Date: _____
(top) (bottom) (top) (bottom)
Do you have a valid Oil & Gas Lease? Yes No
Depth and Type: Junk in Hole at _____ Tools in Hole at _____ Casing Leaks: Yes No Depth of casing leak(s): _____
(depth) (depth)
Type Completion: ALT. I ALT. II Depth of: DV Tool: _____ w / _____ sacks of cement Port Collar: _____ w / _____ sack of cement
(depth) (depth)
Packer Type: _____ Size: _____ Inch Set at: _____ Feet
Total Depth: _____ Plug Back Depth: _____ Plug Back Method: _____

Geological Data:

Formation Name	Formation Top	Formation Base	Completion Information
1. _____	At: _____	to _____ Feet	Perforation Interval _____ to _____ Feet or Open Hole Interval _____ to _____ Feet
2. _____	At: _____	to _____ Feet	Perforation Interval _____ to _____ Feet or Open Hole Interval _____ to _____ Feet

UNDER PENALTY OF PERJURY I HEREBY ATTEST THAT THE INFORMATION CONTAINED HEREIN IS TRUE AND CORRECT TO THE BEST OF MY KNOWLEDGE

Submitted Electronically

Do NOT Write in This Space - KCC USE ONLY	Date Tested: _____	Results: _____	Date Plugged: _____	Date Repaired: _____	Date Put Back in Service: _____
	Review Completed by: _____ Comments: _____				
TA Approved: <input type="checkbox"/> Yes <input type="checkbox"/> Denied Date: _____					

Mail to the Appropriate KCC Conservation Office:

	KCC District Office #1 - 210 E. Frontview, Suite A, Dodge City, KS 67801	Phone 620.225.8888
	KCC District Office #2 / UPGS - 3450 N. Rock Road, Building 600, Suite 601, Wichita, KS 67226	Phone 316.630.4000
	KCC District Office #3 - 1500 SW Seventh Steet, Chanute, KS 66720	Phone 620.432.2300
	KCC District Office #4 - 2301 E. 13th Street, Hays, KS 67601-2651	Phone 785.625.0550

General

Well ID Donna 1-24 FL 1
 Well Donna 1-24 FL 1
 Company Sandridge
 Operator TJ Matzke
 Lease Name Donna 1-24 FL 1
 Elevation 0.00 ft
 Production Method Electrical Submersible Pump

Comment

Tubulars

Tubing OD 3.500 in
 Average Joint Length 32.000 ft
 Sliding Sleeve - * - ft
 Casing OD 7.000 in
 Liner OD - * - in
 Top of Liner - * - ft
 PBTD - * - ft
 Kelly Bushing 0.00 ft

Pump Assembly

Installation Date - * -
 Pump Intake Depth 4641.42 ft
 PIP Gage - * - ft

Gas Separator

Gas Separator Not Used
 Tubing Discharge Temp - * - deg F

Pump Configuration

	Top Pump	Pump 2	Pump 3	Pump 4	Pump 5
Pump Manufacturer	- * -	- * -	- * -	- * -	- * -
Pump Description/Series	- * -	- * -	- * -	- * -	- * -
Serial Number	- * -	- * -	- * -	- * -	- * -
Stage Count	0	0	0	0	0
Pump Housing	- * -	- * -	- * -	- * -	- * -

Total Length of Pump Assembly - * - ft
 Shroud is Not Used

Electric Equipment

Control Panel - * -
 Variable Frequency is Not Used
 Overload Set Point - * -
 Underload Set Point - * -
 Overvoltage Set Point - * -
 Undervoltage Set Point - * -
 Frequency - * -
 Pump Up Time - * -

Cable Data

Round Cable Type - * -
 Round Cable Length - * - ft
 Flat Cable Type - * -
 Flat Cable Length - * - ft

Electrical Cost

Cost Per kW-Hour - * -
 Cost Per kW - * -

Motor Assembly Description

	Top Motor	Motor 2	Motor 3	Motor 4
Manufacturer	- * -	- * -	- * -	- * -
Series	- * -	- * -	- * -	- * -
Type	- * -	- * -	- * -	- * -
HP	- * -	- * -	- * -	- * -
Volts/Amps	- * -	- * -	- * -	- * -
Total Length of Motor Assembly	- * - ft		Installation Date	- * -

Electrical Parameters

AMPS		VOLTS	
A Input	- * -	BA Input	- * -
B Input	- * -	CB Input	- * -
C Input	- * -	AC Input	- * -
		A-gnd	- * -
		B-gnd	- * -
		C-gnd	- * -
Kilowatt	- * -	Power Factor	- * -
		Date and Time of Measurement	- * -

Conditions

Pressure

Static BHP - * - psi (g)
 Static BHP Method - * -
 Static BHP Date - * -
 Producing BHP 701.8 psi (g)
 Producing BHP Method Acoustic
 Producing BHP Date 02/27/2015
 Formation Depth 4641.42 ft

Production

Oil Production - * - BBL/D
 Water Production - * - BBL/D
 Gas Production - * - Mscf/D
 Production Date - * -

Temperatures

Surface Temperature 70 deg F
 Bottomhole Temperature 150 deg F

Surface Producing Pressures

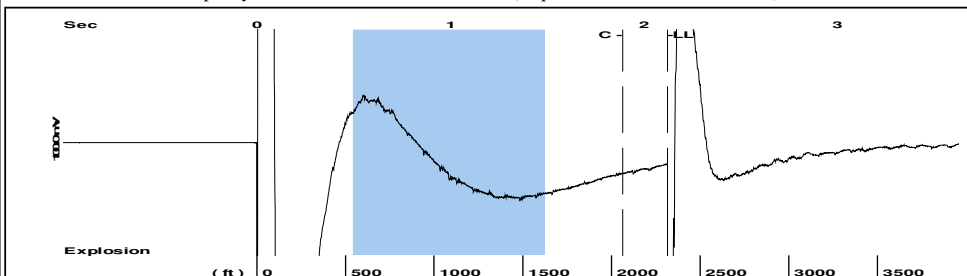
Tubing Pressure - * - psi (g)
 Casing Pressure -14.7 psi (g)

Fluid Properties

Oil API 40 deg API
 Water Specific Gravity 1.05 Sp.Gr.H2O

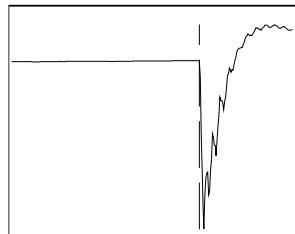
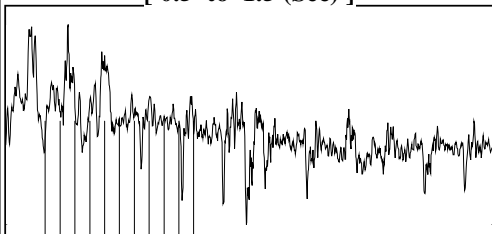
Casing Pressure Buildup

Change in Pressure 0.078 psi
 Over Change in Time 1.00 min

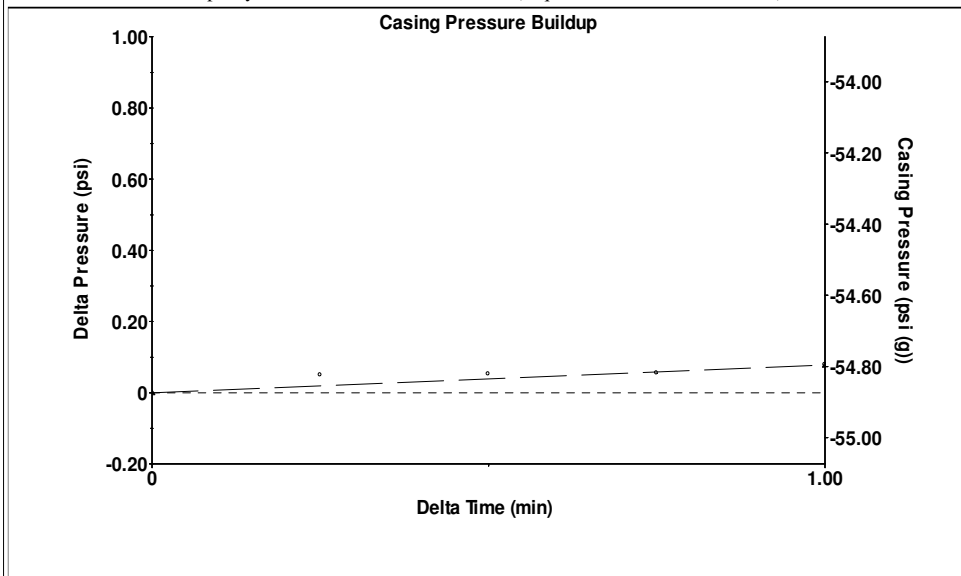


Filter Type High Pass Automatic Collar Count Yes Time 2.122 sec
 Manual Acoustic Veloc 2098.36 ft/s Manual JTS/sec 32.7869 Joints 72.3409 Jts
 Depth 2314.91 ft

[0.5 to 1.5 (Sec)]

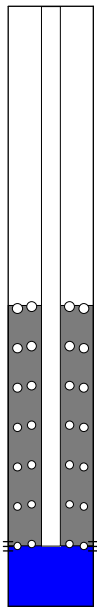


Analysis Method: Automatic



Change in Pressure 0.08 psi PT15216
 Change in Time 1.00 min Range 0 - ? psi

Production	Potential	Casing Pressure
Oil - *-	- *- BBL/D	-14.7 psi (g)
Water - *-	- *- BBL/D	Casing Pressure Buildup
Gas - *-	- *- Mscf/D	0.078 psi
		1.00 min
IPR Method	Vogel	Gas/Liquid Interface Pressure
PBHP/SBHP - *-	- *-	-14.7 psi (g)
Production Efficiency 0.0		
Oil 40 deg.API	Liquid Level Depth	
Water 1.05 Sp.Gr.H2O	2314.91 ft	
Gas 0.70 Sp.Gr.AIR	Pump Intake Depth	
	4641.42 ft	
Acoustic Velocity 2181.82 ft/s	Formation Depth	
	4641.42 ft	
Formation Submergence		
Total Gaseous Liquid Column HT (TVD)	2327 ft	
Equivalent Gas Free Liquid HT (TVD)	2149 ft	



Producing

Annular Gas Flow 3 Mscf/D

% Liquid 92 %

Pump Intake

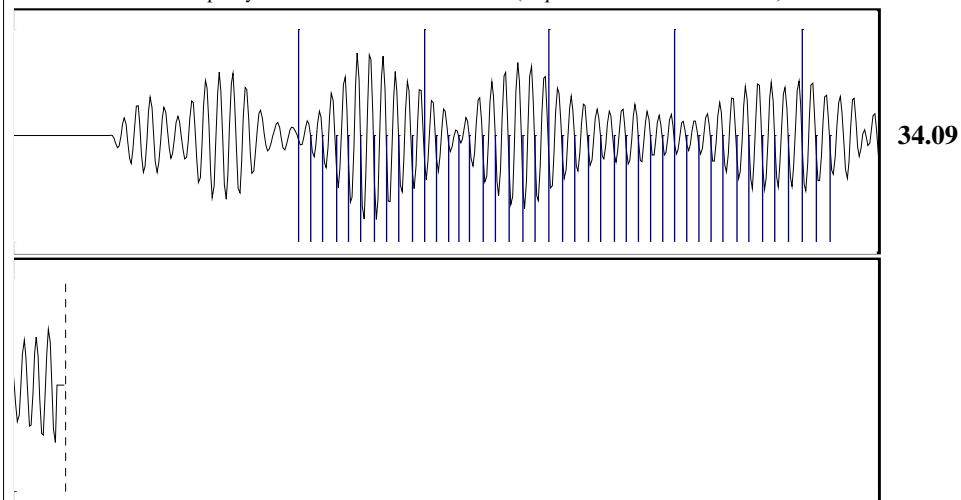
701.8 psi (g)

Producing BHP

701.8 psi (g)

Static BHP

- *- psi (g)



Acoustic Velocity	2181.82 ft/s	Joints counted	42
Joints Per Second	34.0909 jts/sec	Joints to liquid level	72.3409
Depth to liquid level	2314.91 ft	Filter Width	30.7869 34.7869
Automatic Collar Count	Yes	Time to 1st Collar	0.66 1.892

March 26, 2015

Tiffany Golay
SandRidge Exploration and Production LLC
123 ROBERT S. KERR AVE
OKLAHOMA CITY, OK 73102-6406

Re: Temporary Abandonment
API 15-191-22671-02-00
Donna 3304 1A-24H
NE/4 Sec.24-33S-04W
Sumner County, Kansas

Dear Tiffany Golay:

"Your temporary abandonment (TA) application for the well listed above has been approved. In accordance with K.A.R. 82-3-111 the TA status of this well will expire 03/26/2016.

- * If you return this well to service or plug it, please notify the District Office.
- * If you sell this well you are required to file a Transfer of Operator form, T-1.
- * If the well will remain temporarily abandoned, you must submit a new TA application, CP-111, before 03/26/2016.

You may contact me at the number above if you have questions.

Very truly yours,

STEVE VANGIESON"