



# TEMPORARY ABANDONMENT WELL APPLICATION

OPERATOR: License# \_\_\_\_\_  
 Name: \_\_\_\_\_  
 Address 1: \_\_\_\_\_  
 Address 2: \_\_\_\_\_  
 City: \_\_\_\_\_ State: \_\_\_\_\_ Zip: \_\_\_\_\_ + \_\_\_\_\_  
 Contact Person: \_\_\_\_\_  
 Phone: (\_\_\_\_) \_\_\_\_\_  
 Contact Person Email: \_\_\_\_\_  
 Field Contact Person: \_\_\_\_\_  
 Field Contact Person Phone: (\_\_\_\_) \_\_\_\_\_

API No. 15- \_\_\_\_\_  
 Spot Description: \_\_\_\_\_  
 \_\_\_\_\_ - \_\_\_\_\_ - \_\_\_\_\_ - \_\_\_\_\_ Sec. \_\_\_\_\_ Twp. \_\_\_\_\_ S. R. \_\_\_\_\_  E  W  
 \_\_\_\_\_ feet from  N /  S Line of Section  
 \_\_\_\_\_ feet from  E /  W Line of Section  
 GPS Location: Lat: \_\_\_\_\_, Long: \_\_\_\_\_  
(e.g. xx.xxxxx) (e.g. -xxx.xxxxx)  
 Datum:  NAD27  NAD83  WGS84  
 County: \_\_\_\_\_ Elevation: \_\_\_\_\_  GL  KB  
 Lease Name: \_\_\_\_\_ Well #: \_\_\_\_\_  
 Well Type: (check one)  Oil  Gas  OG  WSW  Other: \_\_\_\_\_  
 SWD Permit #: \_\_\_\_\_  ENHR Permit #: \_\_\_\_\_  
 Gas Storage Permit #: \_\_\_\_\_  
 Spud Date: \_\_\_\_\_ Date Shut-In: \_\_\_\_\_

	Conductor	Surface	Production	Intermediate	Liner	Tubing
Size						
Setting Depth						
Amount of Cement						
Top of Cement						
Bottom of Cement						

Casing Fluid Level from Surface: \_\_\_\_\_ How Determined? \_\_\_\_\_ Date: \_\_\_\_\_

Casing Squeeze(s): \_\_\_\_\_ to \_\_\_\_\_ w / \_\_\_\_\_ sacks of cement, \_\_\_\_\_ to \_\_\_\_\_ w / \_\_\_\_\_ sacks of cement. Date: \_\_\_\_\_  
(top) (bottom) (top) (bottom)

Do you have a valid Oil & Gas Lease?  Yes  No

Depth and Type:  Junk in Hole at \_\_\_\_\_  Tools in Hole at \_\_\_\_\_ Casing Leaks:  Yes  No Depth of casing leak(s): \_\_\_\_\_  
(depth) (depth)

Type Completion:  ALT. I  ALT. II Depth of:  DV Tool: \_\_\_\_\_ w / \_\_\_\_\_ sacks of cement  Port Collar: \_\_\_\_\_ w / \_\_\_\_\_ sack of cement  
(depth) (depth)

Packer Type: \_\_\_\_\_ Size: \_\_\_\_\_ Inch Set at: \_\_\_\_\_ Feet

Total Depth: \_\_\_\_\_ Plug Back Depth: \_\_\_\_\_ Plug Back Method: \_\_\_\_\_

**Geological Data:**

Formation Name	Formation Top	Formation Base	Completion Information
1. _____	At: _____	to _____ Feet	Perforation Interval _____ to _____ Feet or Open Hole Interval _____ to _____ Feet
2. _____	At: _____	to _____ Feet	Perforation Interval _____ to _____ Feet or Open Hole Interval _____ to _____ Feet

~~UNDER PENALTY OF PERJURY I HEREBY ATTEST THAT THE INFORMATION CONTAINED HEREIN IS TRUE AND CORRECT TO THE BEST OF MY KNOWLEDGE~~

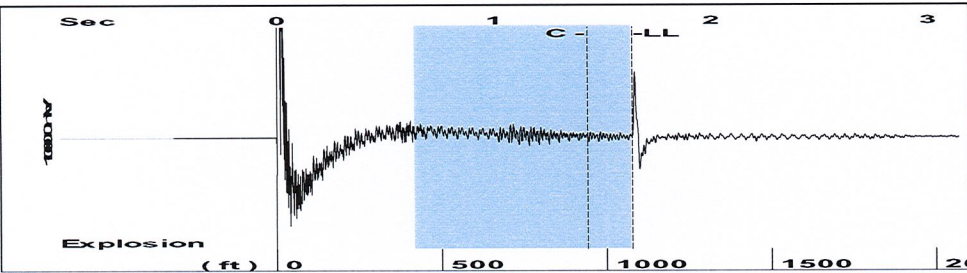
Submitted Electronically

<b>Do NOT Write in This Space - KCC USE ONLY</b>	Date Tested: _____	Results: _____	Date Plugged: _____	Date Repaired: _____	Date Put Back in Service: _____
	Review Completed by: _____ Comments: _____				
TA Approved: <input type="checkbox"/> Yes <input type="checkbox"/> Denied Date: _____					

**Mail to the Appropriate KCC Conservation Office:**

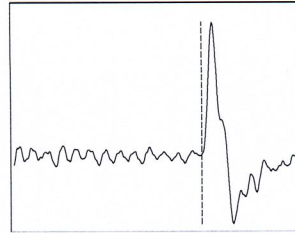
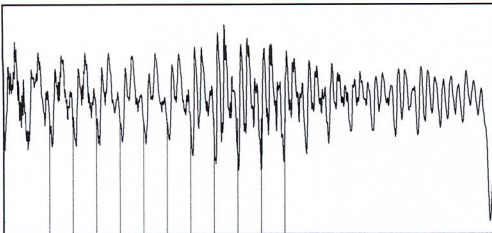
	KCC District Office #1 - 210 E. Frontview, Suite A, Dodge City, KS 67801	Phone 620.225.8888
	KCC District Office #2 / UPGS - 3450 N. Rock Road, Building 600, Suite 601, Wichita, KS 67226	Phone 316.630.4000
	KCC District Office #3 - 1500 SW Seventh Steet, Chanute, KS 66720	Phone 620.432.2300
	KCC District Office #4 - 2301 E. 13th Street, Hays, KS 67601-2651	Phone 785.625.0550

Group: Fish Creek Well: Bahnmaier 12-15 (acquired on: 02/12/15 11:25:35 )



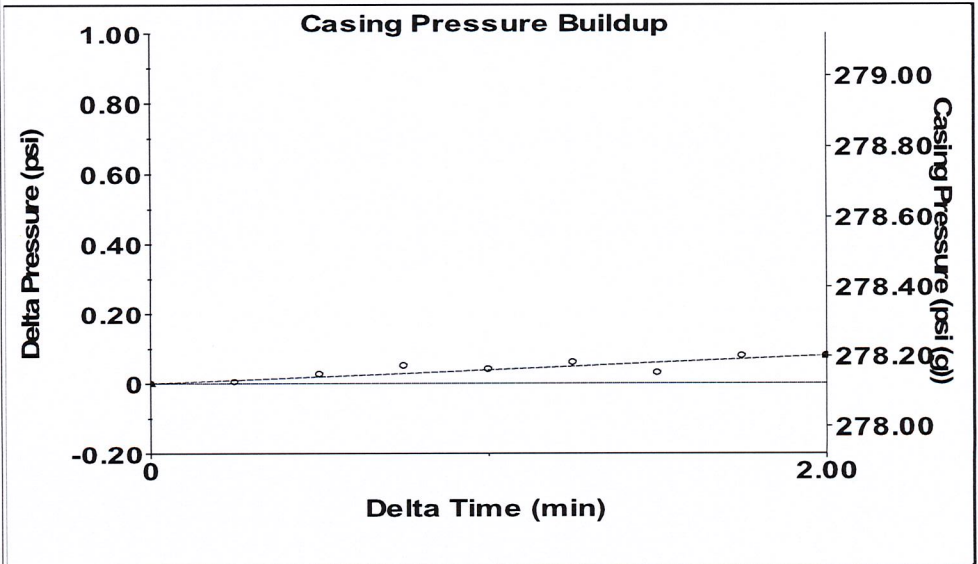
Filter Type High Pass Automatic Collar Count Yes Time 1.638 sec  
 Manual Acoustic Velocity 1320.83 ft/s Manual JTS/sec 20.8333 Joints 34.0069 Jts  
 Depth 1078.02 ft

[ 0.6 to 1.6 (Sec) ]



Analysis Method: Automatic

Group: Fish Creek Well: Bahnmaier 12-15 (acquired on: 02/12/15 11:25:35 )



Change in Pressure 0.08 psi PT 9098  
 Change in Time 2.00 min Range 0 - ? psi

Group: Fish Creek Well: Bahnmaier 12-15 (acquired on: 02/12/15 11:25:35 )

Production		Casing Pressure	Producing
Current	Potential	278.1 psi (g)	
Oil - * -	- * - BBL/D	Casing Pressure Buildup	Casing % Liquid
Water - * -	- * - BBL/D	0.1 psi	100 %
Gas - * -	- * - Mscf/D	2.00 min	
IPR Method	Vogel	Gas/Liquid Interface Pressure	
PBHP/SBHP	- * -	285.5 psi (g)	
Production Efficiency	0.0	Liquid Level Depth	
Oil 40 deg.API		1078.02 ft	
Water 1.05 Sp.Gr.H2O		Tubing Intake Depth	
Gas 0.66 Sp.Gr.AIR		1194.00 ft	
Acoustic Velocity	1316.26 ft/s	Formation Depth	
		1164.00 ft	

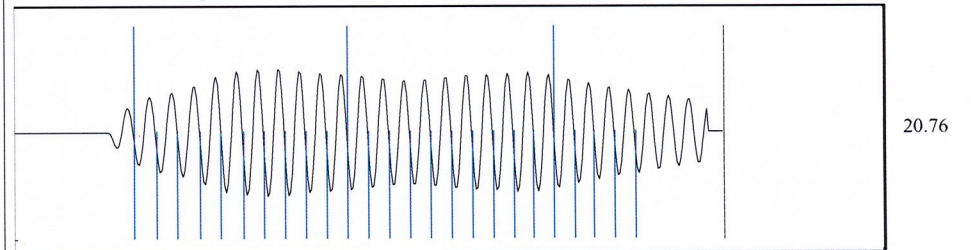


Tubing Intake 327.6 psi (g)  
 Producing BHP 314.0 psi (g)  
 Static BHP 300.0 psi (g)

Formation Submergence  
 Total Gaseous Liquid Column HT (TVD) 116 ft  
 Equivalent Gas Free Liquid HT (TVD) 116 ft

Bahnmaier 12-15

Group: Fish Creek Well: Bahnmaier 12-15 (acquired on: 02/12/15 11:25:35 )



Acoustic Velocity 1316.26 ft/s Joints counted 24  
 Joints Per Second 20.7612 jts/sec Joints to liquid level 34.0069  
 Depth to liquid level 1078.02 ft Filter Width 18.8333 22.8333  
 Automatic Collar Count Yes Time to 1st Collar 0.276 1.432

Conservation Division  
District Office No. 4  
2301 E. 13th Street  
Hays, KS 67601-2651



Phone: 785-625-0550  
Fax: 785-625-0564  
<http://kcc.ks.gov/>

Shari Feist Albrecht, Chair  
Jay Scott Emler, Commissioner  
Pat Apple, Commissioner

Sam Brownback, Governor

March 25, 2015

CHERYL GALLAGHER  
Caerus Washco LLC  
600 17TH STREET  
SUITE 1600N  
DENVER, CO 80202

Re: Temporary Abandonment  
API 15-023-20879-00-00  
BAHN-MAIER 12-15  
NW/4 Sec.15-03S-40W  
Cheyenne County, Kansas

Dear CHERYL GALLAGHER:

"Your temporary abandonment (TA) application for the well listed above has been approved. In accordance with K.A.R. 82-3-111 the TA status of this well will expire 03/25/2016.

- \* If you return this well to service or plug it, please notify the District Office.
- \* If you sell this well you are required to file a Transfer of Operator form, T-1.
- \* If the well will remain temporarily abandoned, you must submit a new TA application, CP-111, before 03/25/2016.

You may contact me at the number above if you have questions.

Very truly yours,

RICHARD WILLIAMS"