



TEMPORARY ABANDONMENT WELL APPLICATION

OPERATOR: License# _____
 Name: _____
 Address 1: _____
 Address 2: _____
 City: _____ State: _____ Zip: _____ + _____
 Contact Person: _____
 Phone: (_____) _____
 Contact Person Email: _____
 Field Contact Person: _____
 Field Contact Person Phone: (_____) _____

API No. 15- _____
 Spot Description: _____
 _____ - _____ - _____ - _____ Sec. _____ Twp. _____ S. R. _____ E W
 _____ feet from N / S Line of Section
 _____ feet from E / W Line of Section
 GPS Location: Lat: _____, Long: _____
(e.g. xx.xxxxx) (e.g. -xxx.xxxxx)
 Datum: NAD27 NAD83 WGS84
 County: _____ Elevation: _____ GL KB
 Lease Name: _____ Well #: _____
 Well Type: (check one) Oil Gas OG WSW Other: _____
 SWD Permit #: _____ ENHR Permit #: _____
 Gas Storage Permit #: _____
 Spud Date: _____ Date Shut-In: _____

	Conductor	Surface	Production	Intermediate	Liner	Tubing
Size						
Setting Depth						
Amount of Cement						
Top of Cement						
Bottom of Cement						

Casing Fluid Level from Surface: _____ How Determined? _____ Date: _____

Casing Squeeze(s): _____ to _____ w / _____ sacks of cement, _____ to _____ w / _____ sacks of cement. Date: _____
(top) (bottom) (top) (bottom)

Do you have a valid Oil & Gas Lease? Yes No

Depth and Type: Junk in Hole at _____ Tools in Hole at _____ Casing Leaks: Yes No Depth of casing leak(s): _____
(depth) (depth)

Type Completion: ALT. I ALT. II Depth of: DV Tool: _____ w / _____ sacks of cement Port Collar: _____ w / _____ sack of cement
(depth) (depth)

Packer Type: _____ Size: _____ Inch Set at: _____ Feet

Total Depth: _____ Plug Back Depth: _____ Plug Back Method: _____

Geological Data:

Formation Name	Formation Top	Formation Base	Completion Information
1. _____	At: _____	to _____ Feet	Perforation Interval _____ to _____ Feet or Open Hole Interval _____ to _____ Feet
2. _____	At: _____	to _____ Feet	Perforation Interval _____ to _____ Feet or Open Hole Interval _____ to _____ Feet

UNDER PENALTY OF PERJURY I HEREBY ATTEST THAT THE INFORMATION CONTAINED HEREIN IS TRUE AND CORRECT TO THE BEST OF MY KNOWLEDGE

Submitted Electronically

Do NOT Write in This Space - KCC USE ONLY	Date Tested: _____	Results: _____	Date Plugged: _____	Date Repaired: _____	Date Put Back in Service: _____
	Review Completed by: _____ Comments: _____				
TA Approved: <input type="checkbox"/> Yes <input type="checkbox"/> Denied Date: _____					

Mail to the Appropriate KCC Conservation Office:

	KCC District Office #1 - 210 E. Frontview, Suite A, Dodge City, KS 67801	Phone 620.225.8888
	KCC District Office #2 / UPGS - 3450 N. Rock Road, Building 600, Suite 601, Wichita, KS 67226	Phone 316.630.4000
	KCC District Office #3 - 1500 SW Seventh Steet, Chanute, KS 66720	Phone 620.432.2300
	KCC District Office #4 - 2301 E. 13th Street, Hays, KS 67601-2651	Phone 785.625.0550

Liquid Level

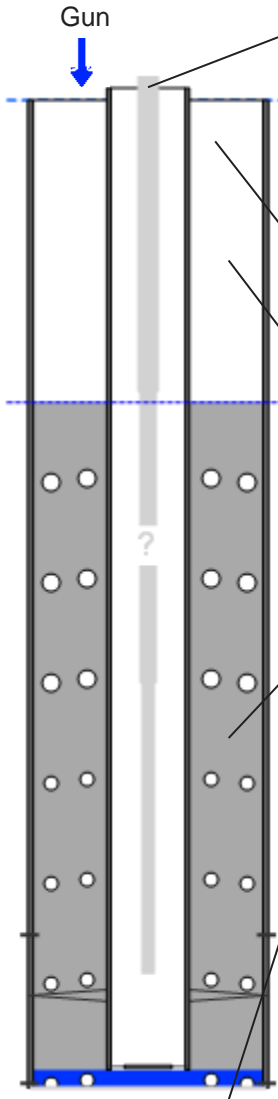
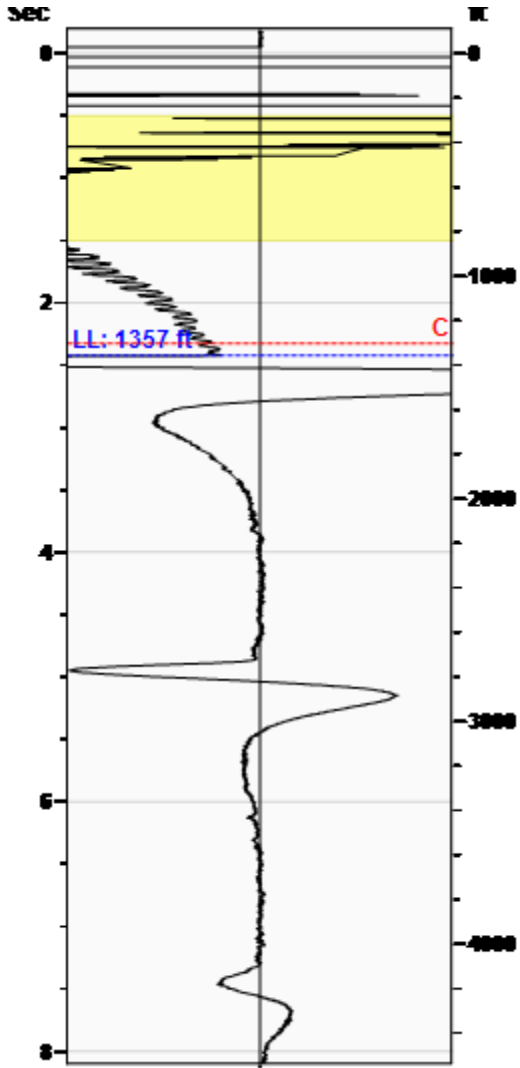
1357 ft

Fluid Above Pump

2983 ft

Equivalent Gas Free Above Pump

2556 ft



Production

Date Entered	03/17/15		
	Current	Potential	
Oil	**	**	BBL/D
Water	**	**	BBL/D
Gas	**	**	Mscf/D
IPR Method	Vogel		
Producing Efficiency	0.00%		

Casing Pressure

Pressure	-1.8 psi (g)
----------	--------------

Annular Gas Flow

Gas Flow	3.2 Mscf/D
----------	------------

Fluid Properties

% Liquid Above Pump	85.71%
% Liquid Below Pump	90.53%

Wellbore Pressures

PIP	846.7 psi (g) @ 4340 ft
PBHP	880.2 psi (g) @ 4426 ft
SBHP	0.0 psi (g) @ 4426 ft
Gas/Liq Interface	-1.3 psi (g) @ 1357 ft

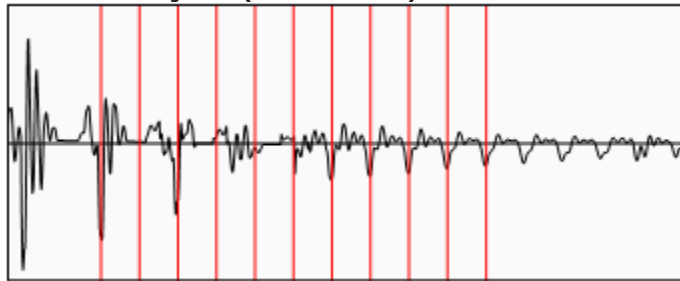
Depths

Pump Intake Depth	4340 ft
Formation Depth	4426 ft

Sensor Serial No.

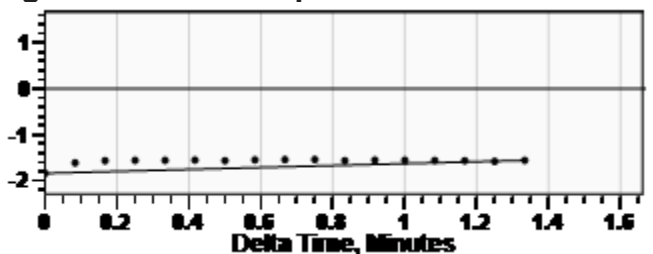
WRFG 284

Collar Analysis (Automatic)



Average Acoustic Velocity	1120 ft/s
Average Joints Per Sec.	17.67 Jts/sec
Joints To Liquid	42.82 Jts

Casing Pressure Buildup



Casing Pressure	-1.8 psi (g)
Buildup	0.3 psi (g)
Buildup Time	1 min 20 sec
Gas Gravity	0.8537 Air = 1

Comments and Recommendations

Echometer Company
 5001 Ditto Lane
 Wichita Falls, TX 76302
 (940) 767-4334
 info@echometer.com

Johnson	@ 4354 to 4380 feet	Perforation Interval: 4374-4380, 4350-4354
Altamont	@ 4192 to 4200 feet	Perforation Interval: 4192-4200
KC	@ 3876 to 3882 feet	Perforation Interval: 3876-3882
C	@ 3798 to 3810 feet	Perforation Interval: 3798-3810
B	@ 3770 to 3780 feet	Perforation Interval: 3770 – 3780
A	@ 3754 to 3760 feet	Perforation Interval: 3754 - 3760

Conservation Division
District Office No. 4
2301 E. 13th Street
Hays, KS 67601-2651



Phone: 785-625-0550
Fax: 785-625-0564
<http://kcc.ks.gov/>

Shari Feist Albrecht, Chair
Jay Scott Emler, Commissioner
Pat Apple, Commissioner

Sam Brownback, Governor

March 27, 2015

Mike Atterbury
Black Tea Oil, LLC
1014 E. 29TH ST.
HAYS, KS 67601-1902

Re: Temporary Abandonment
API 15-109-21225-00-00
Krebs L 1
SW/4 Sec.20-14S-32W
Logan County, Kansas

Dear Mike Atterbury:

"Your temporary abandonment (TA) application for the well listed above has been approved. In accordance with K.A.R. 82-3-111 the TA status of this well will expire 03/27/2016.

- * If you return this well to service or plug it, please notify the District Office.
- * If you sell this well you are required to file a Transfer of Operator form, T-1.
- * If the well will remain temporarily abandoned, you must submit a new TA application, CP-111, before 03/27/2016.

You may contact me at the number above if you have questions.

Very truly yours,

RICHARD WILLIAMS"