

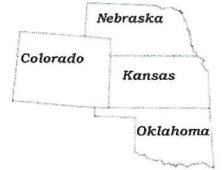


141729bar
CRD NO.

PRO-STAKE LLC

Construction Site Staking

12484
INVOICE NO.



P.O. Box 2324 Garden City, Kansas 67846
Office/Fax: (620) 276-6159 – Cell: (620) 272-1499
burt@pro-stakellc.kscoxmail.com

LEGEND

- ⊙ irr. well
- ⊕ water hydrant
- ⊙ tank battery
- ⊙ staked loc.
- ⊙ prod. well / aband. well
- house
- building
- G— gas line
- W— water line
- E— transmission powerline
- 3 phase powerline
- single phase powerline
- x—x— fence
- ▬ gravel / sand rd.
- ▬ gravel trail / lease rd.
- ▬ dirt rd.
- ▬ dirt trail / lease rd.
- ▬ Hwy / blacktop rd.

NAE, Inc.
OPERATOR

Lane County, KS
COUNTY

14 17s 29w
Sec. Twp. Rng.

Fred 1-14 relocate
LEASE NAME

815' FNL - 432' FWL
LOCATION SPOT

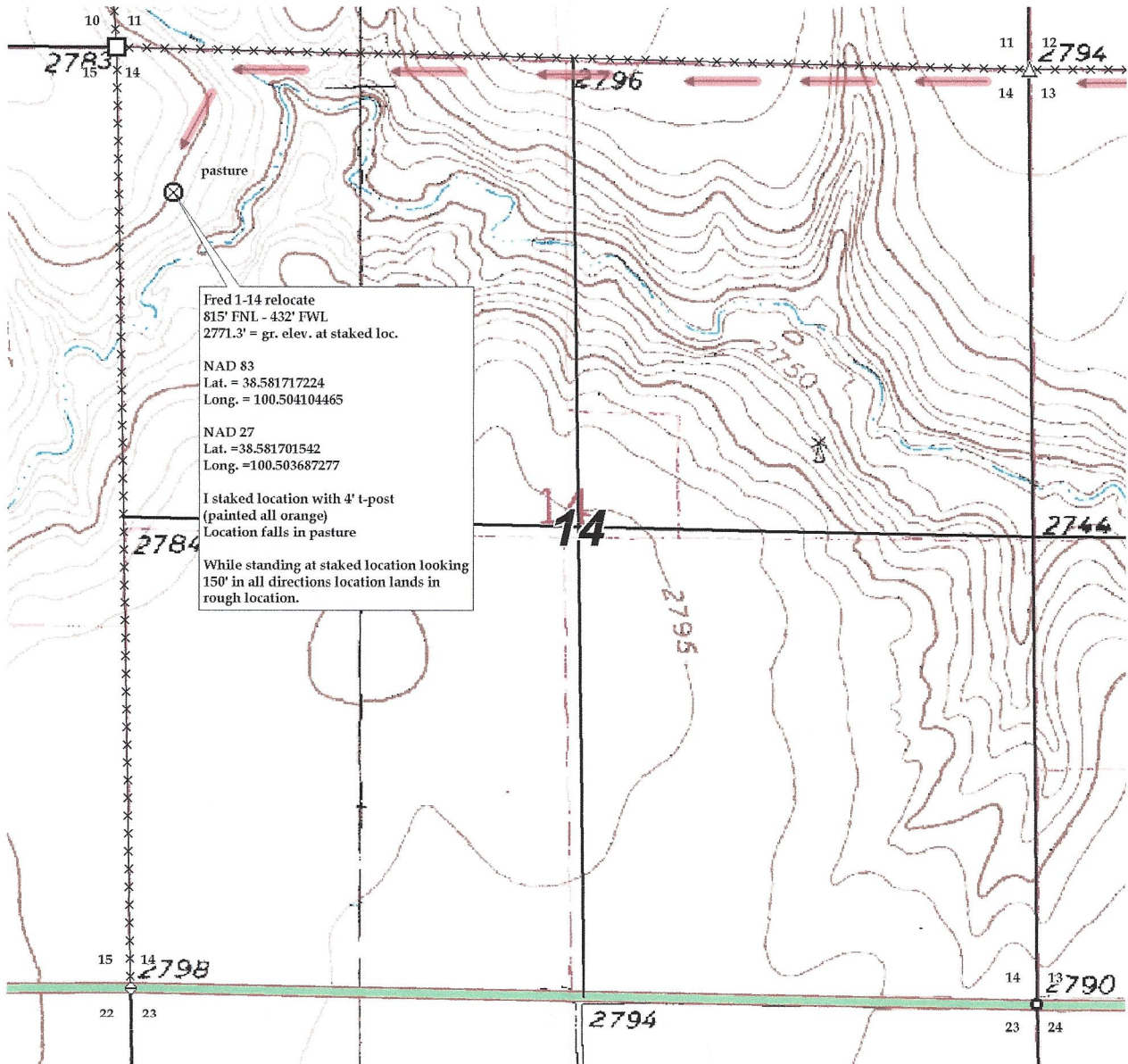
2771.3'
GR. ELEVATION

SCALE: 1" = 1000'
DATE STAKED: Feb. 12th, 2015
MEASURED BY: Ben R.
DRAWN BY: Norby S.
AUTHORIZED BY: Frank T.
DATE REVISED:



DIRECTIONS: From the center of Shields, KS at the intersection of Hwy 4 and Elm St. – Now go 1.4 miles West on Hwy 4 – Now go 0.9 mile South on Hwy 23 – Now go 0.5 mile West on Rd. 230 – Now go 0.7 mile South on lease Rd. – Now go approx. 1600' South through farm ground – Now go approx. 2640' West through farm ground, which is the NE corner of section 14-17s-29w – Now go approx. 5230' West and South through pasture, into staked location. **Final ingress must be verified with landowner or operator.**

*This drawing does not constitute a monumented survey or a land survey plat.
This drawing is for construction purposes only.*



Fred 1-14 relocate
815' FNL - 432' FWL
2771.3' = gr. elev. at staked loc.

NAD 83
Lat. = 38.581717224
Long. = 100.504104465

NAD 27
Lat. = 38.581701542
Long. = 100.503687277

I staked location with 4' t-post
(painted all orange)
Location falls in pasture

While standing at staked location looking
150° in all directions location lands in
rough location.

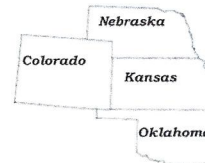


141729bar
CRD NO.

PRO-STAKE LLC

Construction Site Staking

12484
INVOICE NO.



P.O. Box 2324 Garden City, Kansas 67846
Office/Fax: (620) 276-6159 – Cell: (620) 272-1499
burt@pro-stakellc.kscoxmail.com

NAE, Inc.
OPERATOR

Lane County, KS
COUNTY

14 17s 29w
Sec. Twp. Rng.

Fred 1-14 relocate
LEASE NAME

815' FNL - 432' FWL
LOCATION SPOT

2771.3'
GR. ELEVATION

SCALE: 1" = 1000'
DATE STAKED: Feb. 12th, 2015
MEASURED BY: Ben R.
DRAWN BY: Norby S.
AUTHORIZED BY: Frank T.
DATE REVISED:



LEGEND

- ⊙ irr. well
- ⊕ water hydrant
- ⊖ tank battery
- ⊗ staked loc.
- ⊙ prod. well / aband. well
- house
- building
- G— gas line
- W— water line
- E— transmission powerline
- 3 phase powerline
- *— single phase powerline
- x—x— fence
- ▬ gravel / sand rd.
- ▬ gravel trail / lease rd.
- ▬ dirt rd.
- ▬ dirt trail / lease rd.
- ▬ Hwy / blacktop rd.

DIRECTIONS: From the center of Shields, KS at the intersection of Hwy 4 and Elm St. – Now go 1.4 miles West on Hwy 4 – Now go 0.9 mile South on Hwy 23 – Now go 0.5 mile West on Rd. 230 – Now go 0.7 mile South on lease Rd. – Now go approx. 1600' South through farm ground – Now go approx. 2640' West through farm ground, which is the NE corner of section 14-17s-29w – Now go approx. 5230' West and South through pasture, into staked location. **Final ingress must be verified with landowner or operator.**

*This drawing does not constitute a monumented survey or a land survey plat.
This drawing is for construction purposes only.*

