

ADVANTAGE ELEVATIONS

OIL FIELD SURVEYORS

BOX 8604 - PRATT, KS 67124
(620) 672-6491

218154
INVOICE NO

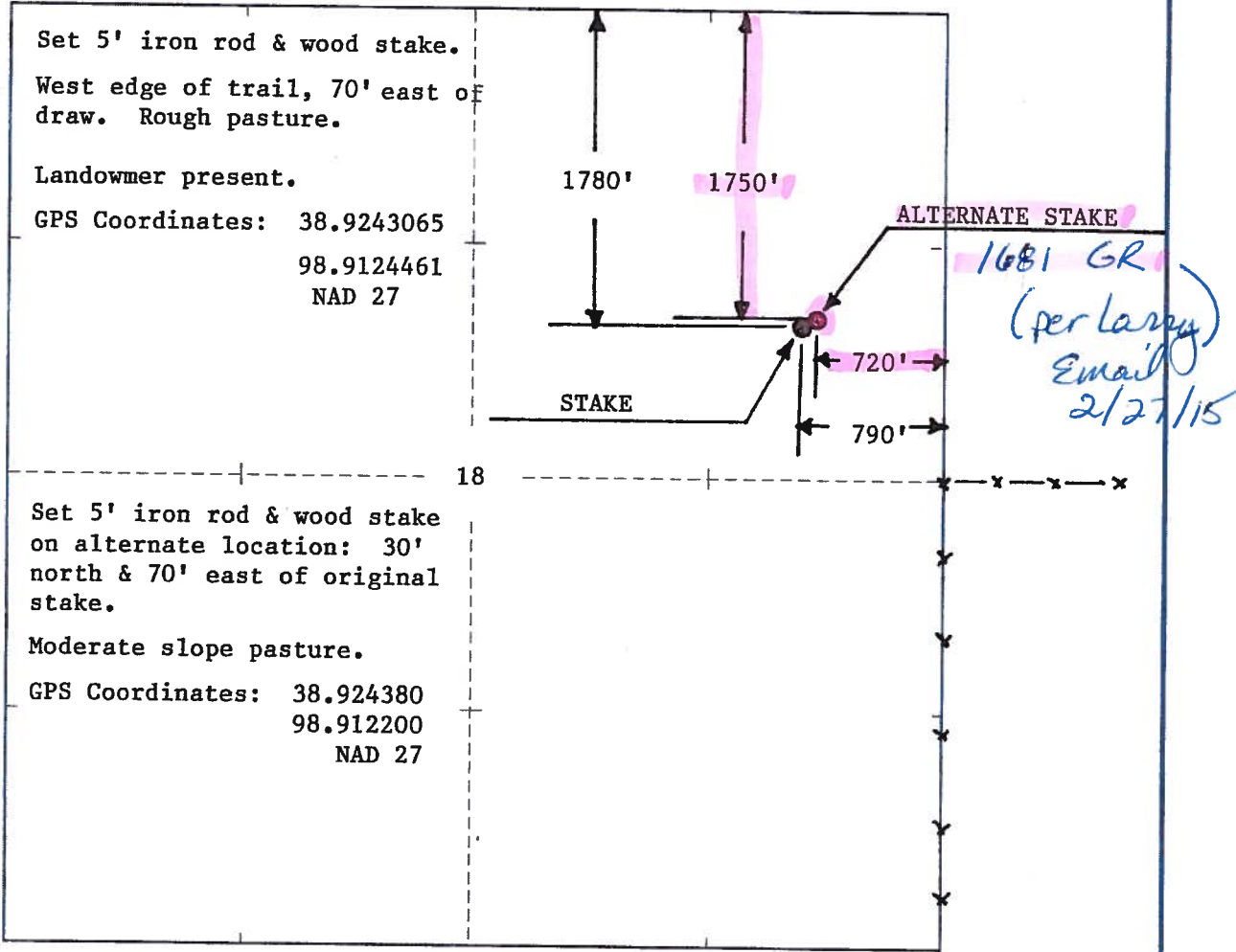
CMX INC OPERATOR 1-18 NO WOELK FARM
Russell COUNTY 18 S 13s T 14w R 1780' ENL. & 790' FEL. of Sec LOCATION

ELEVATION: 1674' GR *Original*
→ 1681' GR *ALTERNATE*

CMX INC
1700 N WATERFRONT PKWY
BLDG 300, STE B
WICHITA, KS 67206

AUTHORIZED BY: Leah Kasten

SCALE: 1" = 1000'



DATE STAKED 2/20/15

Russell NW, KS' Scale: 1" = 0.189MI, 305MT, 1.000Ft, 1 MI = 5.280", 1 cm = 120MT.

