

GEOLOGICAL REPORT

2348 North Stonybrook Court Wichita, Kansas 67226-3804 (316) 430-0185

COMPANY VINCENT OIL CORP (5004) LEASE SMITH 1-6 FIELD KIN65 DOWN NUS

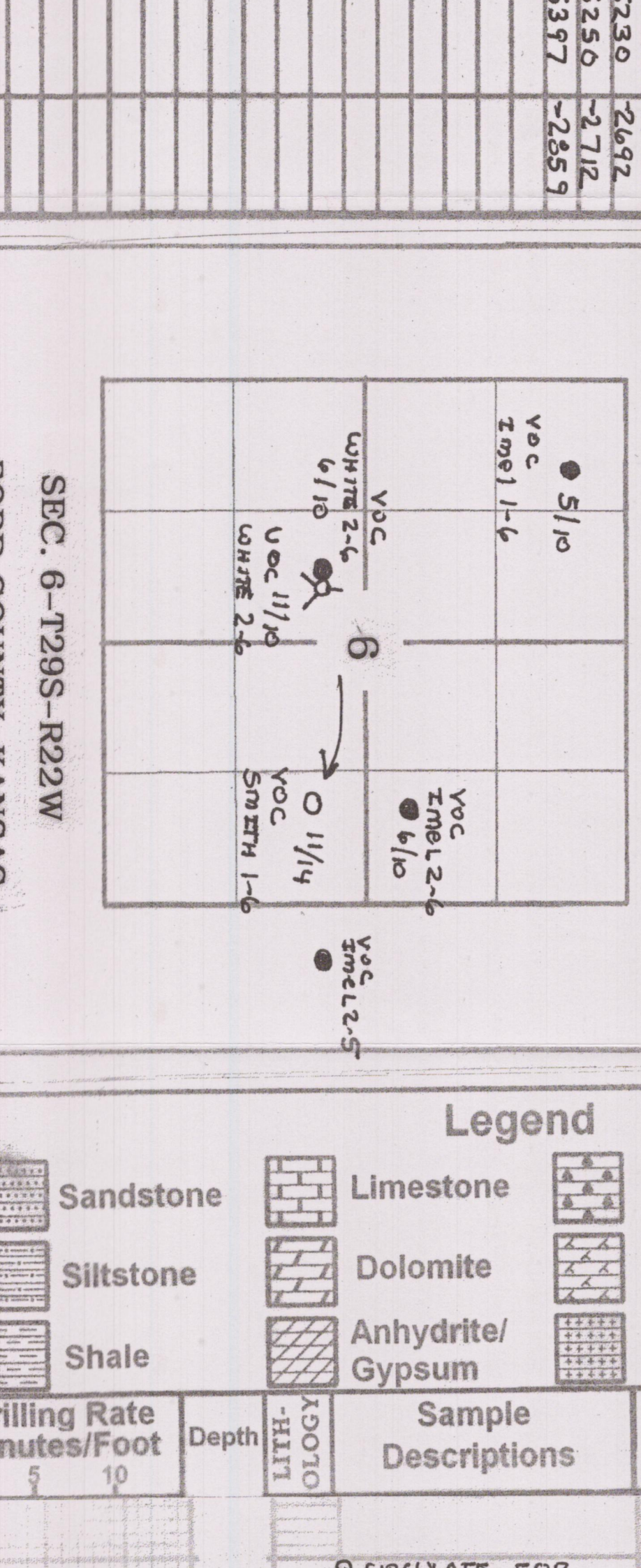
LOCATION 2630 FSL - 922 FSL SECTION 26 TOWNSHIP 29S RANGE 22W COUNTY FORD STATE KANSAS

DATE 11-19-14 DRILLER MWD NOV 19, 2014

REMARKS: THE VAC SMITH 1-6 WAS DRILLED AS A DEVELOPMENT TEST ON THE MAINE 3D PROSPECT. RTD @ 5400 WAS SOME 100 FT

Table with columns: Date, Penetration, Bit Record, and General Information.

Formation Tops table with columns: Sample Tops, Corrected Tops, Electric Log Tops, and Subsea Datum.



Legend

Legend table listing geological units: Sandstone, Siltstone, Shale, Limestone, Dolomite, Anhydrite/Gypsum, Chert, Granite Wash, Granite, Coal/Carb. Shale, Conglomerate, oolitic/ooloidic.

Table with columns: Drilling Rate Minutes/Foot, Depth, Sample Descriptions, and Hot Wire Chromatograph.

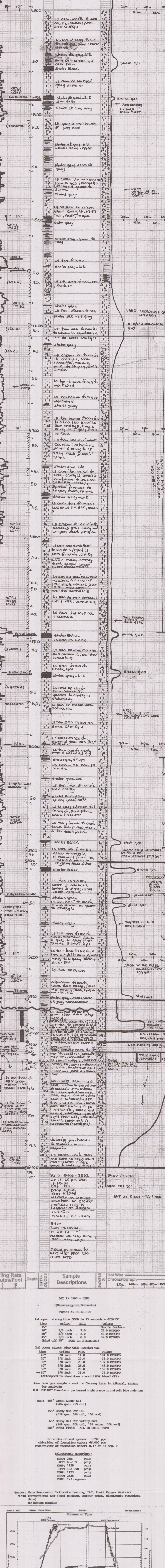


Table with columns: Drilling Rate Minutes/Foot, Depth, Sample Descriptions, and Hot Wire Chromatograph.

1st open: strong blow OBOS blowing 15 seconds - GTS/15" orifice PSIG volume

2nd open: strong blow OBOS gauging gas time orifice PSIG volume

Rec: 465' Clean Gassy Oil (28% gas, 72% oil)

155' Gassy Mud Cut Oil (31% gas, 59% oil, 10% mud)

65' Gassy Oil Cut Watery Mud (20% gas, 20% oil, 18% water, 36% mud)

685' Total Fluid - ALL IN DRILL PIPE

chlorides of mud system: 7,200 ppm chlorides of formation water: 66,000 ppm resistivity of formation water: 0.17 at 51 deg. F

(Electronic Readings) IHVD: 2651 psig IHP: 60-159 psig IHBP: 1128 psig IHP: 162-298 psig IHP: 1123 psig IHP: 2535 psig TEMP: 123 degrees

Tester: Gary Pevotoux: Trilobite Testing, LLC, Pratt Kansas District

NOTES: Conventional DST (dual packers, safety joint, electronic recorders, bars) NO bottom sampler

