



**TRILOBITE TESTING, INC.**

# DRILL STEM TEST REPORT

Bickle Energies

**23-4S-27W Decatur KS**

2052 250th Ave.  
Hays KS 67601

**Lyc #23-1**

Job Ticket: 62560

**DST#: 1**

ATTN: Eli Fells / Jeff Bur

Test Start: 2015.01.01 @ 17:14:00

## GENERAL INFORMATION:

Formation: **Tarkio**

Deviated: No Whipstock: ft (KB)

Time Tool Opened: 19:29:40

Time Test Ended: 00:53:20

Test Type: Conventional Bottom Hole (Initial)

Tester: Donovan Baumann

Unit No: 78

**Interval: 3178.00 ft (KB) To 3245.00 ft (KB) (TVD)**

Reference Elevations: 2574.00 ft (KB)

Total Depth: 3245.00 ft (KB) (TVD)

2567.00 ft (CF)

Hole Diameter: 7.88 inches Hole Condition: Good

KB to GR/CF: 7.00 ft

**Serial #: 6752 Inside**

Press @ Run Depth: 41.30 psig @ 3179.00 ft (KB)

Capacity: 8000.00 psig

Start Date: 2015.01.01

End Date: 2015.01.02

Last Calib.: 2015.01.02

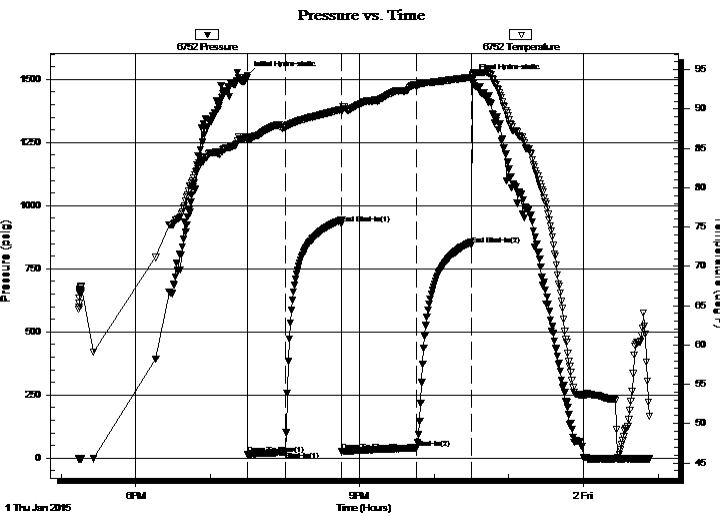
Start Time: 17:14:01

End Time: 00:53:20

Time On Btm: 2015.01.01 @ 19:29:30

Time Off Btm: 2015.01.01 @ 22:31:00

**TEST COMMENT:** 30 - IF - Weak surface blow built to 3 3/4 in. in 30 min.  
45 - ISI - Weak return started 10 min. in and stayed for the rest of the shut-in  
60 - FF - Weak surface blow built to 4 1/2 in. in 60 min.  
45 - FSI - Weak return stayed for the shut-in



## PRESSURE SUMMARY

Time (Min.)	Pressure (psig)	Temp (deg F)	Annotation
0	1515.90	86.35	Initial Hydro-static
1	14.67	86.09	Open To Flow (1)
31	26.20	87.75	Shut-In(1)
76	928.55	89.93	End Shut-In(1)
77	26.16	89.73	Open To Flow (2)
137	41.30	93.02	Shut-In(2)
181	844.67	94.05	End Shut-In(2)
182	1501.35	94.35	Final Hydro-static

## Recovery

Length (ft)	Description	Volume (bbl)
50.00	WCM - 5W - 95M	0.70

## Gas Rates

	Choke (inches)	Pressure (psig)	Gas Rate (Mcf/d)



**TRILOBITE  
TESTING, INC.**

# DRILL STEM TEST REPORT

**FLUID SUMMARY**

Bickle Energies

**23-4S-27W Decatur KS**

2052 250th Ave.  
Hays KS 67601

**Lyc #23-1**

Job Ticket: 62560

**DST#: 1**

ATTN: Eli Fells / Jeff Bur

Test Start: 2015.01.01 @ 17:14:00

## Mud and Cushion Information

Mud Type: Gel Chem

Cushion Type:

Oil API:

deg API

Mud Weight: 9.00 lb/gal

Cushion Length:

ft

Water Salinity:

ppm

Viscosity: 49.00 sec/qt

Cushion Volume:

bbbl

Water Loss: 7.60 in<sup>3</sup>

Gas Cushion Type:

Resistivity: 0.00 ohm.m

Gas Cushion Pressure:

psig

Salinity: 750.00 ppm

Filter Cake: 1.00 inches

## Recovery Information

Recovery Table

Length ft	Description	Volume bbl
50.00	WCM - 5W - 95M	0.701

Total Length: 50.00 ft      Total Volume: 0.701 bbl

Num Fluid Samples: 0

Num Gas Bombs: 0

Serial #:

Laboratory Name:

Laboratory Location:

Recovery Comments:

