



TRILOBITE TESTING, INC.

DRILL STEM TEST REPORT

Bickle Energies

23-4S-27W Decatur KS

2052 250th Ave.
Hays KS 67601

Lyc #23-1

Job Ticket: 62561

DST#: 4

ATTN: Eli Fells / Jeff Bur

Test Start: 2015.01.04 @ 10:32:00

GENERAL INFORMATION:

Formation: **Toronto - LKC " A "**

Deviated: No Whipstock: ft (KB)

Time Tool Opened: 13:36:20

Time Test Ended: 18:21:09

Test Type: Conventional Bottom Hole (Reset)

Tester: Ryan Nichols

Unit No: 78

Interval: 3448.00 ft (KB) To 3502.00 ft (KB) (TVD)

Total Depth: 3502.00 ft (KB) (TVD)

Hole Diameter: 7.88 inches Hole Condition: Good

Reference Elevations: 2574.00 ft (KB)

2567.00 ft (CF)

KB to GR/CF: 7.00 ft

Serial #: 6752 Inside

Press @ Run Depth: 31.63 psig @ 3449.00 ft (KB)

Start Date: 2015.01.04

End Date:

2015.01.04

Start Time: 10:32:01

End Time:

18:21:10

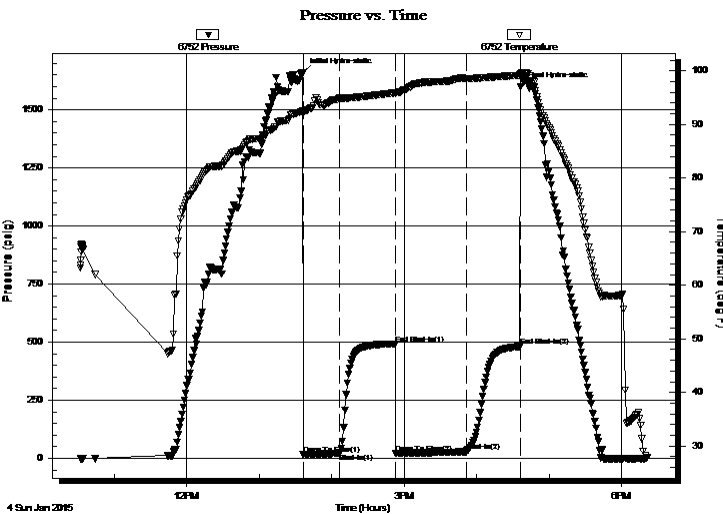
Capacity: 8000.00 psig

Last Calib.: 2015.01.04

Time On Btm: 2015.01.04 @ 13:36:10

Time Off Btm: 2015.01.04 @ 16:36:39

TEST COMMENT: 30 IF - 1/2" blow built to 2" (in diesel)
45 ISI - Surface blow
60 FF - Surface blow built to 1"
45 FSI - No return



PRESSURE SUMMARY

Time (Min.)	Pressure (psig)	Temp (deg F)	Annotation
0	1661.15	92.47	Initial Hydro-static
1	15.34	91.98	Open To Flow (1)
31	20.15	94.85	Shut-In(1)
77	491.15	95.91	End Shut-In(1)
77	20.94	95.74	Open To Flow (2)
136	31.63	98.59	Shut-In(2)
181	481.17	99.19	End Shut-In(2)
181	1598.76	99.40	Final Hydro-static

Recovery

Length (ft)	Description	Volume (bbl)
30.00	OCM - 15%o - 85%M	0.42

Gas Rates

	Choke (inches)	Pressure (psig)	Gas Rate (Mcf/d)

* Recovery from multiple tests

