



TRILOBITE TESTING, INC.

DRILL STEM TEST REPORT

Shelby Resources

15-18s-14w Barton

2717 Canal Blvd
Hays KS 67601

W-S #2-15

Job Ticket: 62905

DST#: 2

ATTN: Jermey Schwartz

Test Start: 2015.02.01 @ 06:45:00

GENERAL INFORMATION:

Formation: **Arbuckle**

Deviated: No Whipstock: ft (KB)

Time Tool Opened: 09:11:30

Time Test Ended: 14:21:00

Test Type: Conventional Bottom Hole (Initial)

Tester: Jared Scheck

Unit No: 55-Great Bend-25

Interval: 3400.00 ft (KB) To 3452.00 ft (KB) (TVD)

Reference Elevations: 1934.00 ft (KB)

Total Depth: 3452.00 ft (KB) (TVD)

1925.00 ft (CF)

Hole Diameter: 7.88 inches Hole Condition: Fair

KB to GR/CF: 9.00 ft

Serial #: 8400

Press @ Run Depth: 174.94 psig @ ft (KB)

Capacity: 5000.00 psig

Start Date: 2015.02.01 End Date: 2015.02.01

Last Calib.: 2015.02.01

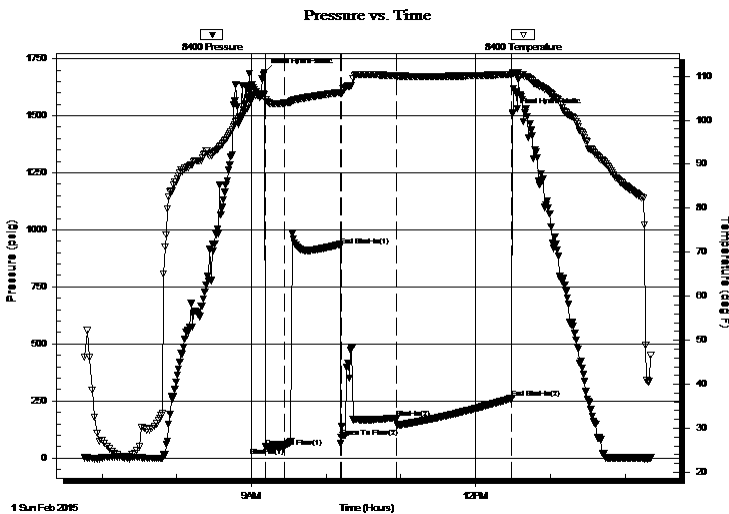
Start Time: 06:46:00 End Time: 14:21:00

Time On Btm: 2015.02.01 @ 09:10:30

Time Off Btm: 2015.02.01 @ 12:30:00

TEST COMMENT: IFP-15 Minutes-Weak blow built 2 1/2 inches into bucket
ISIP-45 Minutes-No blow back
FFP-45 Minutes-Strong blow built bottom of bucket in 12 minutes
FSIP-90 Minutes-No blow back

PRESSURE SUMMARY



Time (Min.)	Pressure (psig)	Temp (deg F)	Annotation
0	1689.87	105.81	Initial Hydro-static
1	48.49	104.71	Open To Flow (1)
16	48.71	103.90	Shut-In(1)
61	929.49	106.30	End Shut-In(1)
62	89.57	106.01	Open To Flow (2)
106	174.94	110.06	Shut-In(2)
199	262.04	110.38	End Shut-In(2)
200	1514.29	110.78	Final Hydro-static

Recovery

Length (ft)	Description	Volume (bbl)
300.00	spot oil mud 2%oil 98%mud	2.30

Gas Rates

Choke (inches)	Pressure (psig)	Gas Rate (Mcf/d)



**TRILOBITE
TESTING, INC.**

DRILL STEM TEST REPORT

FLUID SUMMARY

Shelby Resources

15-18s-14w Barton

2717 Canal Blvd
Hays KS 67601

W-S #2-15

Job Ticket: 62905

DST#: 2

ATTN: Jermey Schwartz

Test Start: 2015.02.01 @ 06:45:00

Mud and Cushion Information

Mud Type: Gel Chem

Cushion Type:

Oil API:

deg API

Mud Weight: 9.00 lb/gal

Cushion Length:

ft

Water Salinity:

ppm

Viscosity: 67.00 sec/qt

Cushion Volume:

bbbl

Water Loss: 7.20 in³

Gas Cushion Type:

Resistivity: ohm.m

Gas Cushion Pressure:

psig

Salinity: 4800.00 ppm

Filter Cake: 1.00 inches

Recovery Information

Recovery Table

Length ft	Description	Volume bbl
300.00	spot oil mud 2%oil 98%mud	2.295

Total Length: 300.00 ft Total Volume: 2.295 bbl

Num Fluid Samples: 0

Num Gas Bombs: 0

Serial #:

Laboratory Name:

Laboratory Location:

Recovery Comments:

