



Scale 1:240 Imperial

Well Name: W-S #2-15
 Surface Location: 676' FSL_827' FWL Sec 15-18S-14W
 Bottom Location:
 API: 15-009-26080-00-00
 License Number:
 Spud Date: 1/27/2015 Time: 10:45 PM
 Region: Barton County
 Drilling Completed: 2/1/2015 Time: 11:30 PM
 Surface Coordinates: Y = 660365 & X = 1895889
 Bottom Hole Coordinates:
 Ground Elevation: 1925.00ft
 K.B. Elevation: 1934.00ft
 Logged Interval: 2970.00ft To: 3540.00ft
 Total Depth: 3540.00ft
 Formation: Lansing-Kansas City
 Drilling Fluid Type: Chemical/Fresh Water Gel

OPERATOR

Company: Shelby Resources, LLC
 Address: 445 Union Blvd, Suite 208
 Lakewood, CO 80228

Contact Geologist: Janine Sturdavant
 Contact Phone Nbr: 303-907-2209 / 720-274-4682
 Well Name: W-S #2-15
 Location: 676' FSL_827' FWL Sec 15-18S-14W API: 15-009-26080-00-00
 Pool: Field: Wildcat
 State: Kansas Country: USA

LOGGED BY



Company: Shelby Resources, LLC
 Address: 445 UNION BLVD. Suite 208
 LAKEWOOD, CO. 80228

Phone Nbr: 203-671-6034
 Logged By: Geologist Name: Jeremy Schwartz

NOTES

The Shelby Resources, LLC W-S #2-15 was drilled to a total depth of 3540', bottoming in the Arbuckle. A TookeDaq gas detector was employed in the drilling of said well

2 DST's were conducted throughout the Lansing Kansas-City and Arbuckle. The DST reports can be found at the bottom of this log.

Due to the DST results, sample shows, gas kicks, and log analysis it was determined by all parties involved to further test the well through production casing. The dry samples were saved and will be available for further review at the Kansas Geological Society Well Sample Library, located in Wichita, KS.

*Note: The Log tops are approximately 2-4' higher than the sample tops so all DST's need to be adjusted accordingly.

Respectfully Submitted,
 Jeremy Schwartz
 Geologist

SURFACE CO-ORDINATES

Well Type: Vertical
 Longitude:
 N/S Co-ord: Y = 660365
 E/W Co-ord: X = 1895889

Latitude:

CONTRACTOR

Contractor: Sterling Drilling Co
 Rig #: 4
 Rig Type: mud rotary
 Spud Date: 1/27/2015
 TD Date: 2/1/2015
 Rig Release:
 Time: 10:45 PM
 Time: 11:30 PM
 Time:

ELEVATIONS

K.B. Elevation: 1934.00ft
 K.B. to Ground: 9.00ft
 Ground Elevation: 1925.00ft

DATE	DEPTH	ACTIVITY
Friday, January 30, 2015	3125'	Geologist Jeremy Schwartz on location @ 1515hrs, ~3125', DRLG ahead through
	3187'	Douglas Shale, Brown Lime, CFS @ 3187', Conduct Bit Trip, Swap PDC out for Button Bit,
		Successful Bit Trip, Resume DRLG ahead through Lansing,
Saturday, January 31, 2015	3220'	CFS @ 3340', Conduct DST #1 in the Lansing "H", Successful Test, Resume DRLG,
		CFS @ 3405', Resume DRLG,
Sunday, February 01, 2015	3448'	CFS @ 3448', Resume DRLG, CFS @ 3452', Conduct DST #2 in the Arbuckle,
		Successful Test, Resume DRLG, CFS @ 3458', Resume DRLG ahead to TD,
		TD of 3540' reached @ 2330hrs, CTCH 1hour then OOH
Monday, February 02, 2015	3540'	Conduct Logging Operations, Logging Operations Complete @ 0845hrs
		Geologist Jeremy Schwartz off location @ 0915hrs

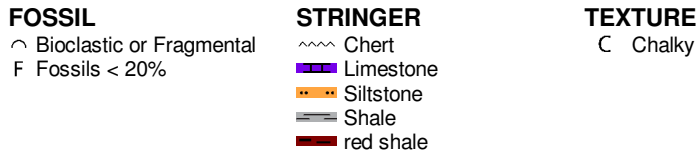
CLIENT:	SHELBY RESOURCES, LLC
WELL NAME:	W-S #2-15
LEGAL:	SW-NE-SW-SW 15-18S-14W
COUNTY:	BARTON
API :	15-009-26080-0000
DRLG CONTRACTOR:	STERLING DRILLING CO.
RIG #:	4
DOGHOUSE #:	620-388-4192
TOOLPUSHER:	LANNY SALOGA
CELL #:	620-388-4193

		SHELBY RESOURCES, LLC				LD DRILLING, INC.						
		W-S #1-15				KORIEL UNIT #1-22						
		W-S #2-15		SW SE NW SW 15-18S-14W		NE NE NW NW 22-18S-14W						
		KB	1934	KB	1942	KB	1925					
		LOG TOPS		COMP. CARD		LOG		SMPL.				
		SAMPLE TOPS		COMP. CARD		LOG		SMPL.				
FORMATION	DEPTH	DATUM	DEPTH	DATUM	DEPTH	DATUM	CORR.	CORR.	DEPTH	DATUM	CORR.	CORR.
ANHYDRITE TOP	875	1059	878	1056	886	1056	+ 3	+ 0	869	1056	+ 3	+ 0
BASE	904	1030	924	1010	912	1030	+ 0	- 20	898	1027	+ 3	- 17
TOPEKA	2893	-959	2896	-962	2900	-958	- 1	- 4	2890	-965	+ 6	+ 3
HEEBNER SHALE	3110	-1176	3112	-1178	3115	-1173	- 3	- 5	3106	-1181	+ 5	+ 3
TORONTO	3118	-1184	3124	-1190	3123	-1181	- 3	- 9	3115	-1190	+ 6	+ 0
DOUGLAS SHALE	3132	-1198	3134	-1200	3135	-1193	- 5	- 7	3128	-1203	+ 5	+ 3
BROWN LIME	3183	-1249	3187	-1253	3188	-1246	- 3	- 7	3180	-1255	+ 6	+ 2
LKC	3192	-1258	3195	-1261	3196	-1254	- 4	- 7	3189	-1264	+ 6	+ 3
LKC G POROSITY	3262	-1328	3266	-1332	3267	-1325	- 3	- 7	3259	-1334	+ 6	+ 2
MUNCIE CREEK	3323	-1389	3326	-1392	3328	-1386	- 3	- 6	3318	-1393	+ 4	+ 1
LKC H	3326	-1392	3333	-1399	3331	-1389	- 3	- 10	3320	-1395	+ 3	- 4
STARK SHALE	3376	-1442	3379	-1445	3382	-1440	- 2	- 5	3369	-1444	+ 2	- 1
BKC	3398	-1464	3402	-1468	3404	-1462	- 2	- 6	3389	-1464	+ 0	- 4
CONGLOMERATE	3418	-1484	3416	-1482	3420	-1478	- 6	- 4	3410	-1485	+ 1	+ 3
ARBUCKLE	3438	-1504	3439	-1505	3439	-1497	- 7	- 8	3428	-1503	- 1	- 2
RTD			3540	-1606	3507	-1565		- 41	3530	-1605		- 1
LTD	3538	-1604			3504	-1562	- 42		3531	-1606	+ 2	

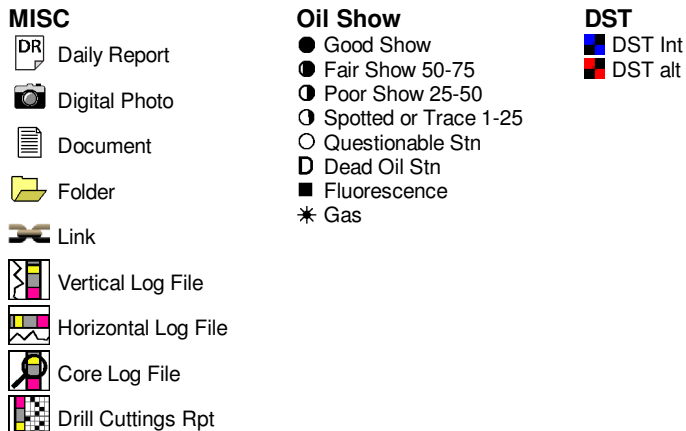
ROCK TYPES



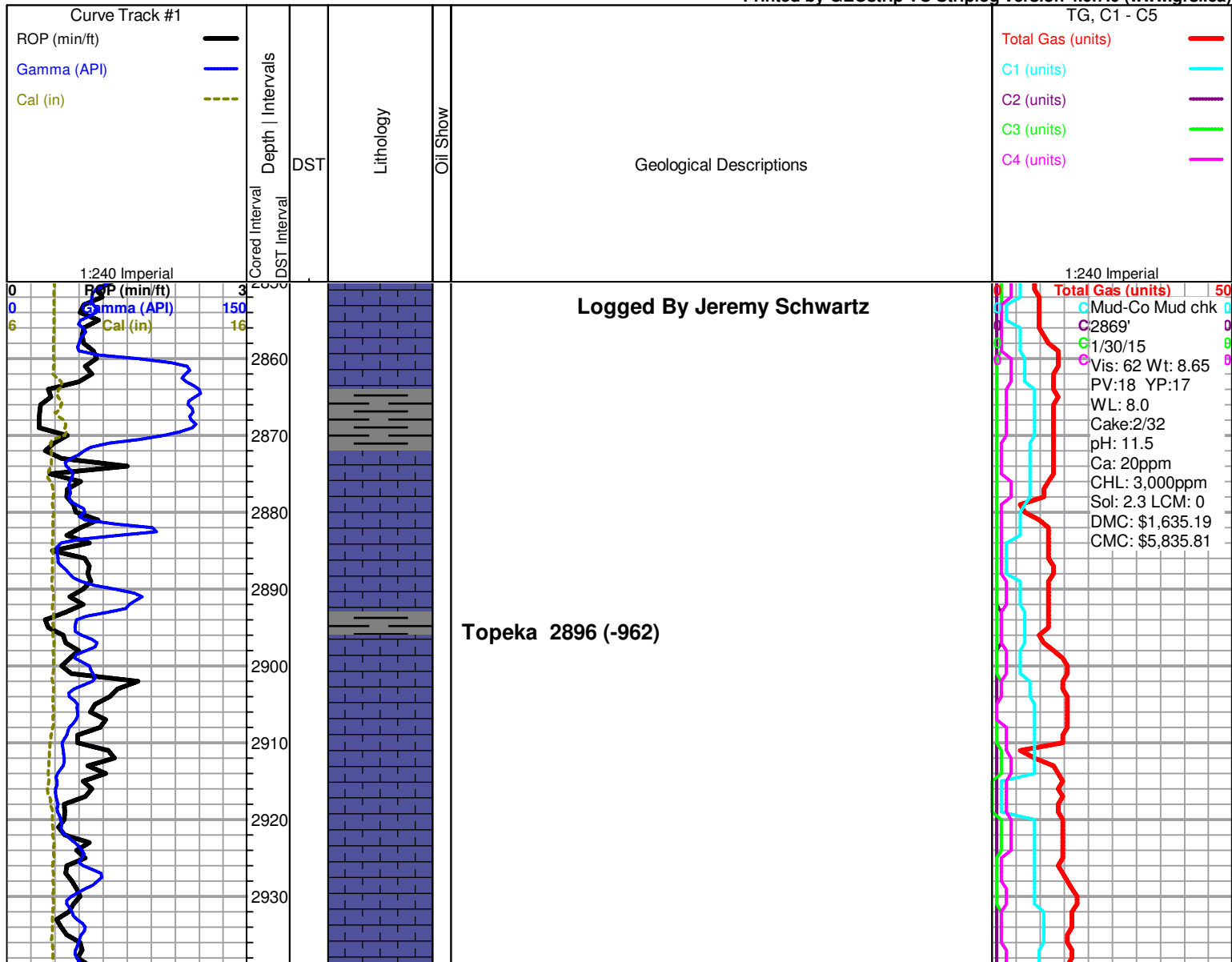
ACCESSORIES

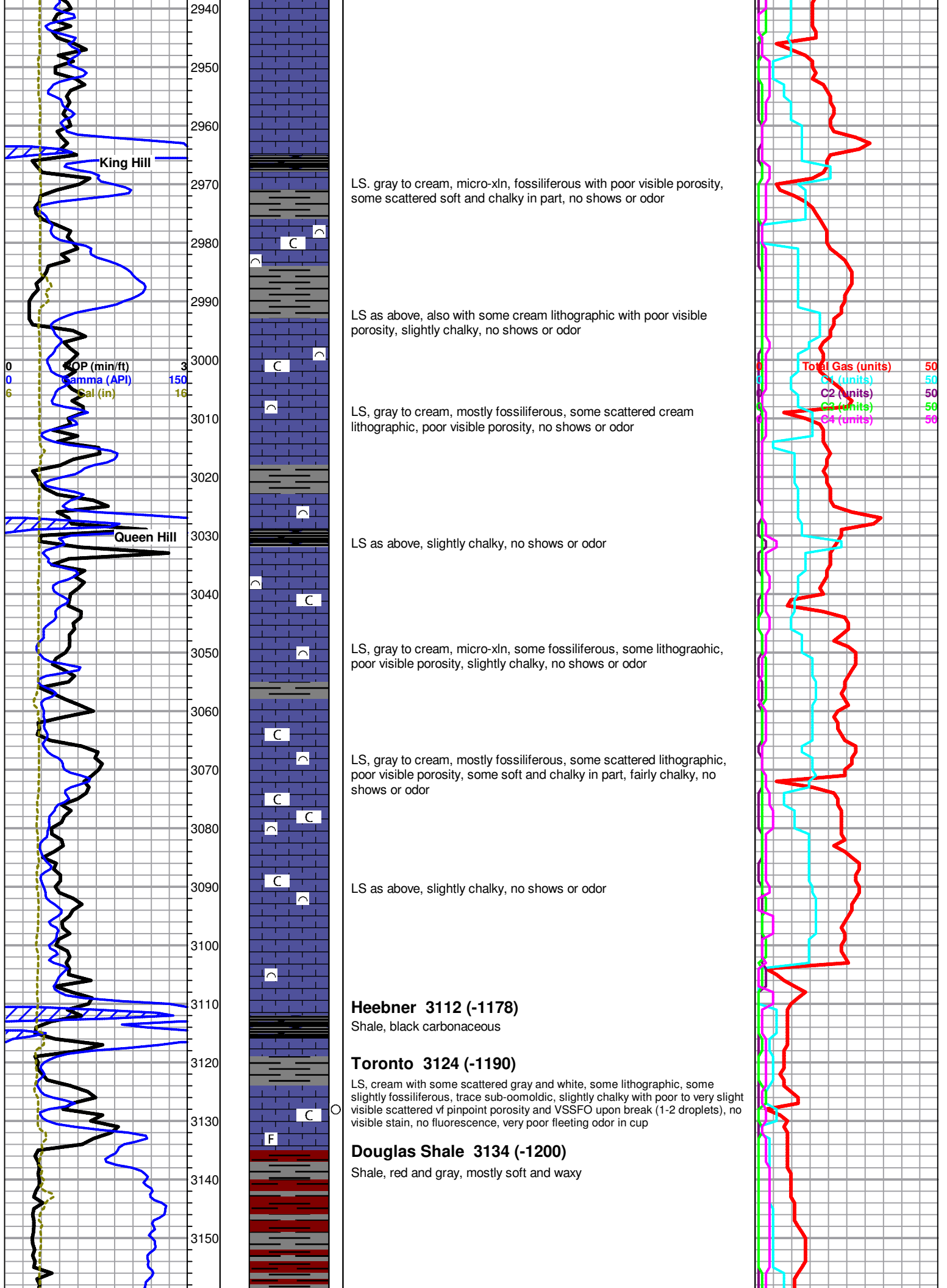


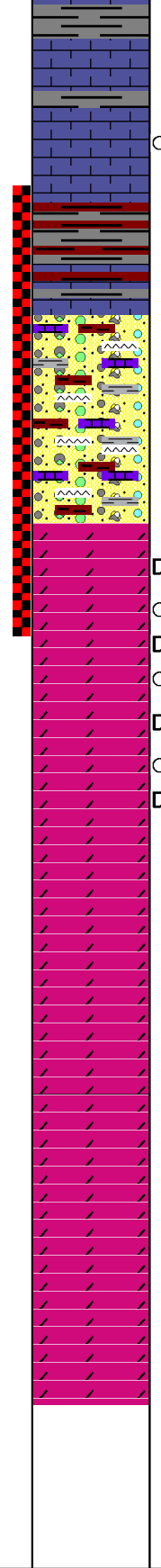
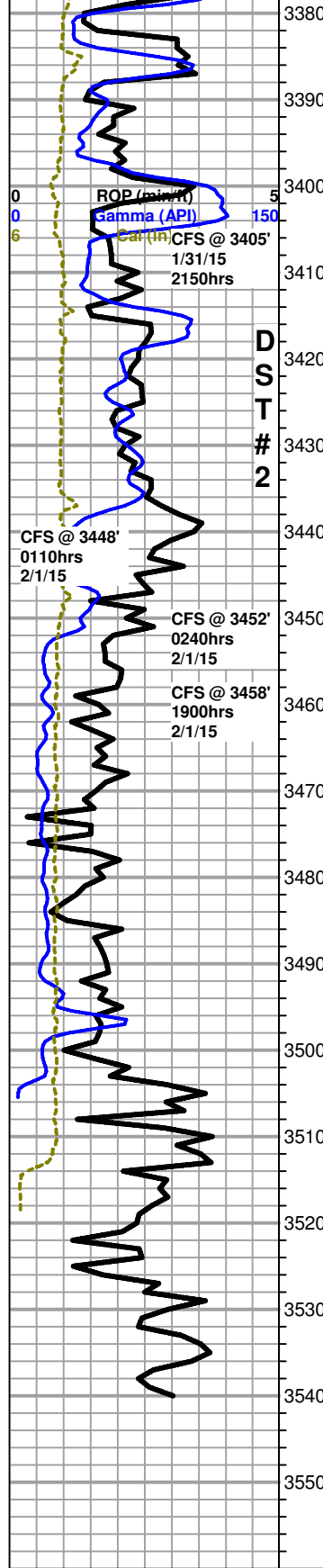
OTHER SYMBOLS



Printed by GEOstrip VC Striplog version 4.0.7.0 (www.grsi.ca)







LS, cream to gray, micro-crypto xln, lithographic and dense with poor visible porosity, no shows or odor

LS as above, also with some brown, crypto-xln and dense with poor visible porosity, some very scattered with some scattered pinpoint porosity and few very small very scattered vugs in few chips, with scattered to very scattered black gilsonitic to wet tarry black stain, NSFO, no odor

BKC 3398 (-1464)

3405' 30" LS, cream to gray with some scattered brown, micro-xln, lithographic and dense with poor visible porosity, some very scattered with scattered to very scattered gilsonitic to tarry wet black stain,

3405' 60" Mostly same as above, with influx of red and gray shale

~3410' Gray and red shale, with some LS, cream to gray, lithographic and dense with poor visible porosity, no show or odor

Mixed shales and LS, with some scattered tan to brown and orange to red chert, trace oolitic, red wash, no show or odor

Conglomerate as above

Shelby W-S # 2-15 dst 2.jpg

Arbuckle 3439 (-1505)

3448' 30" Dolomite, white, micro-xln, sub-sucrosic and dense with poor visible porosity, some scattered sub-rhombic development, some barren, some (~40-50%) with scattered black gilsonitic stain, few chips (~10%) fairly friable, with scattered gilsonitic stain as above, upon break chips have fair to good show brown to black tarry, clingy free oil and slight show gas bubbles, good odor

3448' 60" Mostly same as above, good odor

3452' 30" Dolomite, white, micro-xln, sub-sucrosic and dense with poor visible porosity, some scattered sub-rhombic development, some very scattered pyritic, ~50% with scattered black gilsonitic stain, chips too dense to break, NSFO, fair odor

3452' 60" Mostly same as above, NSFO, poor odor

3459' 60" Dolomite, white, micro-xln, sub-sucrosic and dense with poor visible porosity, some scattered fair sub-rhombic development, some barren, some with scattered to very scattered black gilsonitic stain, few chips with slight show brown to black tarry, clingy free oil upon break, poor odor

~3470' Dolomite, white, micro-xln, mostly sub-sucrosic and dense with poor visible porosity, some scattered fair sub-rhombic, few very scattered chips with several very scattered very small vugs, with scattered to very scattered black gilsonitic to wet, tarry, clingy stain, few chips with VSSFO upon break, poor odor

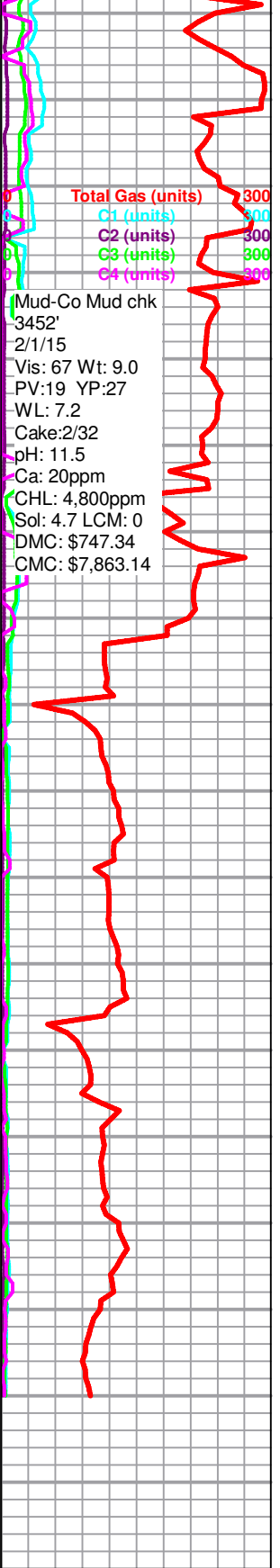
~3480-3500' Dolomite as above, mostly dense and barren, slightly chalky, NSFO, poor odor

~3500' Dolomite, white, micro-xln, sub-sucrosic and dense with poor visible porosity, some very scattered poor sub-rhombic development, barren, slightly chalky, NSFO, no odor

Dolomite, white, micro-med xln, mix of dense and barren and sub-sucrosic with poor to fair sub-rhombic development, very dense with poor visible porosity, slightly chalky, NSFO, no odor

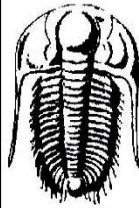
Dolomite, white, micro-xln, mostly very dense with poor visible porosity, some very scattered med-xln, sub-sucrosic with poor to fair scattered sub-rhombic development, no show or odor

Dolomite, white, micro-xln, sub-sucrosic and very dense with poor visible porosity, some very scattered sucrosic, barren, no show or odor



Mud-Co Mud chk
3452'
2/1/15
Vis: 67 Wt: 9.0
PV:19 YP:27
WL: 7.2
Cake:2/32
pH: 11.5
Ca: 20ppm
CHL: 4,800ppm
Sol: 4.7 LCM: 0
DMC: \$747.34
CMC: \$7,863.14

Rotary TD 3540' @ 2330hrs 2/1/15
Nabors Well Services Logging TD @ 3538'
Complete Logging Operations @ 0845hrs 2/2/15
Geologist Jeremy Schwartz off location @ 0915hrs 2/2/15



TRILOBITE TESTING, INC.

DRILL STEM TEST REPORT

Shelby Resources
 2717 Canal Blvd
 Hays KS 67601
 ATTN: Jermey Schwartz

15-18s-14w Barton
W-S #2-15
 Job Ticket: 62904 **DST#: 1**
 Test Start: 2015.01.31 @ 08:25:00

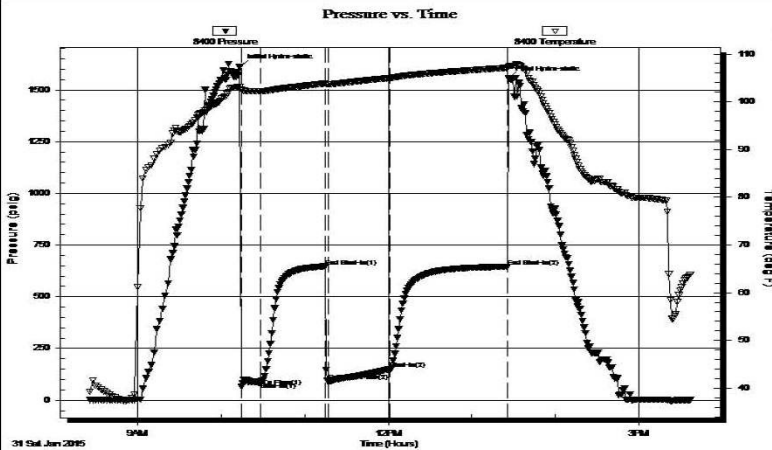
GENERAL INFORMATION:

Formation: **Lansing H zone**
 Deviated: No Whipstock: ft (KB)
 Time Tool Opened: 10:14:30
 Time Test Ended: 15:37:00
Interval: 3312.00 ft (KB) To 3340.00 ft (KB) (TVD)
 Total Depth: 3340.00 ft (KB) (TVD)
 Hole Diameter: 7.88 inches Hole Condition: Fair
 Test Type: Conventional Bottom Hole (Initial)
 Tester: Jared Scheck
 Unit No: 55-Great Bend - 25 R
 Reference Elevations: 1934.00 ft (KB)
 1925.00 ft (CF)
 KB to GR/CF: 9.00 ft

Serial #: 8400

Press@RunDepth: 151.14 psig @ ft (KB) Capacity: 5000.00 psig
 Start Date: 2015.01.31 End Date: 2015.01.31 Last Calib.: 2015.01.31
 Start Time: 08:26:00 End Time: 15:37:00 Time On Btm: 2015.01.31 @ 10:13:30
 Time Off Btm: 2015.01.31 @ 13:26:30

TEST COMMENT: IFP-15 Minutes-Strong blow built bottom of bucket in 2 1/2 minutes
 ISIP-45 Minutes-Very Weak blow back
 FFP-45 Minutes-Strong blow built bottom of bucket in 2 minutes gas to surface 35 minutes into open see gas report
 FSIP-90 Minutes-Bottom of bucket blow



PRESSURE SUMMARY

Time (Min.)	Pressure (psig)	Temp (deg F)	Annotation
0	1612.85	103.13	Initial Hydro-static
1	64.69	102.55	Open To Flow (1)
15	88.31	102.19	Shut-In(1)
61	646.55	103.83	End Shut-In(1)
64	93.80	103.67	Open To Flow (2)
108	151.14	104.98	Shut-In(2)
192	645.51	107.13	End Shut-In(2)
193	1554.76	107.41	Final Hydro-static

Recovery

Length (ft)	Description	Volume (bbl)
60.00	GOM 40%gas 30%oil 30%mud	0.30
60.00	GOM 50%gas 20%oil 30%mud	0.30
300.00	GO 20%gas 80%oil	3.39
0.00	gas in pipe	0.00

Gas Rates

	Choke (inches)	Pressure (psig)	Gas Rate (Mcf/d)
First Gas Rate	0.13		

DRILL STEM TEST REPORT

Shelby Resources

15-18s-14w Barton

2717 Canal Blvd
Hays KS 67601

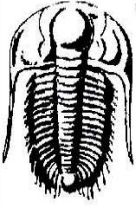
W-S #2-15

Job Ticket: 62905

DST#: 2

ATTN: Jermey Schw artz

Test Start: 2015.02.01 @ 06:45:00



TRILOBITE TESTING, INC.

GENERAL INFORMATION:

Formation: **Arbuckle**

Deviated: No Whipstock: ft (KB)

Time Tool Opened: 09:11:30

Time Test Ended: 14:21:00

Test Type: Conventional Bottom Hole (Initial)

Tester: Jared Scheck

Unit No: 55-Great Bend-25

Interval: 3400.00 ft (KB) To 3452.00 ft (KB) (TVD)

Reference Elevations: 1934.00 ft (KB)

Total Depth: 3452.00 ft (KB) (TVD)

1925.00 ft (CF)

Hole Diameter: 7.88 inches Hole Condition: Fair

KB to GR/CF: 9.00 ft

Serial #: 8400

Press@RunDepth: 174.94 psig @ ft (KB)

Capacity: 5000.00 psig

Start Date: 2015.02.01 End Date: 2015.02.01

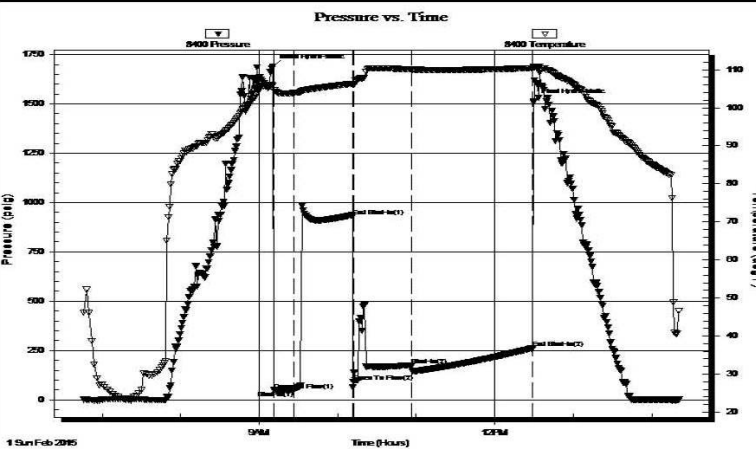
Last Calib.: 2015.02.01

Start Time: 06:46:00 End Time: 14:21:00

Time On Btm: 2015.02.01 @ 09:10:30

Time Off Btm: 2015.02.01 @ 12:30:00

TEST COMMENT: IFP-15 Minutes-Weak blow built 2 1/2 inches into bucket
ISIP-45 Minutes-No blow back
FFP-45 Minutes-Strong blow built bottom of bucket in 12 minutes
FSIP-90 Minutes-No blow back



PRESSURE SUMMARY

Time (Min.)	Pressure (psig)	Temp (deg F)	Annotation
0	1689.87	105.81	Initial Hydro-static
1	48.49	104.71	Open To Flow (1)
16	48.71	103.90	Shut-In(1)
61	929.49	106.30	End Shut-In(1)
62	89.57	106.01	Open To Flow (2)
106	174.94	110.06	Shut-In(2)
199	262.04	110.38	End Shut-In(2)
200	1514.29	110.78	Final Hydro-static

Recovery

Length (ft)	Description	Volume (bbl)
300.00	spot oil mud 2%oil 98%mud	2.30

Gas Rates

Choke (inches)	Pressure (psig)	Gas Rate (Mcf/d)