



## DRILL STEM TEST REPORT

Prepared For: **Shelby Resources**

448 Union Blvd Suite 208  
Lakewood, Colorado 80228

ATTN: Jeremy Schwartz

### **Janice Unit #1-2**

### **2-18s-14w Barton**

Start Date: 2015.02.10 @ 05:20:00

End Date: 2015.02.10 @ 09:40:00

Job Ticket #: 62072                      DST #: 3

Trilobite Testing, Inc  
PO Box 362 Hays, KS 67601  
ph: 785-625-4778 fax: 785-625-5620

Printed: 2015.02.11 @ 00:50:31



**TRILOBITE TESTING, INC.**

# DRILL STEM TEST REPORT

Shelby Resources  
 448 Union Blvd Suite 208  
 Lakewood, Colorado 80228  
 ATTN: Jeremy Schwartz

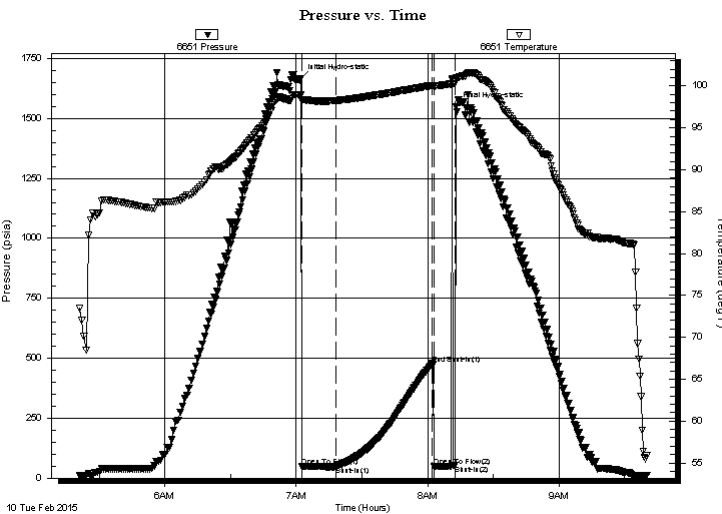
**2-18s-14w Barton**  
**Janice Unit #1-2**  
 Job Ticket: 62072 **DST#: 3**  
 Test Start: 2015.02.10 @ 05:20:00

## GENERAL INFORMATION:

Formation: **Arbuckle**  
 Deviated: No Whipstock: ft (KB)  
 Test Type: Conventional Bottom Hole (Initial)  
 Time Tool Opened: 07:02:30 Tester: Gene Budig  
 Time Test Ended: 09:40:00 Unit No: 60  
 Interval: **3308.00 ft (KB) To 3348.00 ft (KB) (TVD)** Reference Elevations: 1850.00 ft (KB)  
 Total Depth: 3348.00 ft (KB) (TVD) 1841.00 ft (CF)  
 Hole Diameter: 7.88 inches Hole Condition: Fair KB to GR/CF: 9.00 ft

**Serial #: 6651 Inside**  
 Press @ Run Depth: 49.99 psia @ 3344.00 ft (KB) Capacity: 5000.00 psia  
 Start Date: 2015.02.10 End Date: 2015.02.10 Last Calib.: 2015.02.11  
 Start Time: 05:21:00 End Time: 09:40:00 Time On Btm: 2015.02.10 @ 07:02:00  
 Time Off Btm: 2015.02.10 @ 08:13:00

**TEST COMMENT:** 1st Opening 15 Minutes weak blow for 7 minutes and died  
 1st Shut-In 45 Minutes  
 2nd Opening 20 Minutes no blow flushed tool good surge no help came out of the hole no final shut in was taken



## PRESSURE SUMMARY

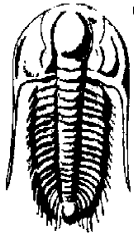
Time (Min.)	Pressure (psia)	Temp (deg F)	Annotation
0	1666.77	98.91	Initial Hydro-static
1	48.20	98.24	Open To Flow (1)
16	49.99	98.25	Shut-In(1)
60	477.45	100.05	End Shut-In(1)
61	49.94	99.97	Open To Flow (2)
71	54.62	100.33	Shut-In(2)
71	1547.98	100.97	Final Hydro-static

## Recovery

Length (ft)	Description	Volume (bbl)
10.00	Drilling Mud	0.05

## Gas Rates

	Choke (inches)	Pressure (psia)	Gas Rate (Mcf/d)



**TRILOBITE  
TESTING, INC.**

# DRILL STEM TEST REPORT

Shelby Resources  
448 Union Blvd Suite 208  
Lakewood, Colorado 80228  
ATTN: Jeremy Schwartz

**2-18s-14w Barton**

**Janice Unit #1-2**

Job Ticket: 62072

**DST#: 3**

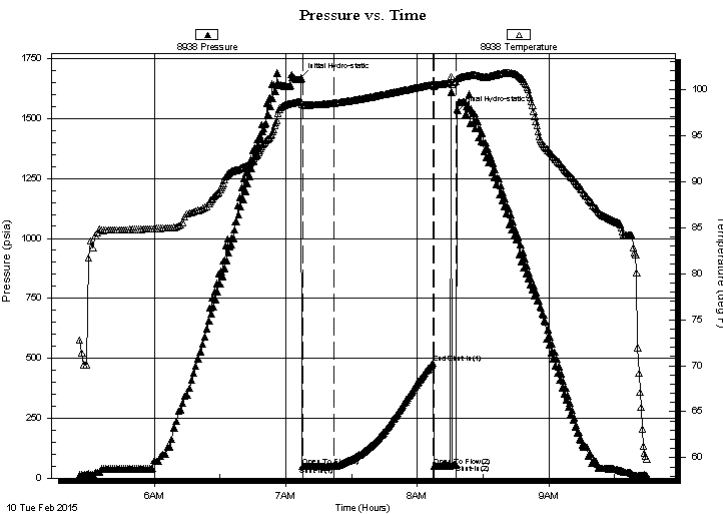
Test Start: 2015.02.10 @ 05:20:00

## GENERAL INFORMATION:

Formation: **Arbuckle**  
 Deviated: No Whipstock: ft (KB)  
 Time Tool Opened: 07:02:30  
 Time Test Ended: 09:40:00  
 Interval: **3308.00 ft (KB) To 3348.00 ft (KB) (TVD)**  
 Total Depth: 3348.00 ft (KB) (TVD)  
 Hole Diameter: 7.88 inches Hole Condition: Fair  
 Test Type: Conventional Bottom Hole (Initial)  
 Tester: Gene Budig  
 Unit No: 60  
 Reference Elevations: 1850.00 ft (KB)  
 1841.00 ft (CF)  
 KB to GR/CF: 9.00 ft

**Serial #: 8938 Outside**  
 Press @ Run Depth: 479.36 psia @ 3345.00 ft (KB) Capacity: 5000.00 psia  
 Start Date: 2015.02.10 End Date: 2015.02.10 Last Calib.: 2015.02.11  
 Start Time: 05:26:00 End Time: 09:44:30 Time On Btm: 2015.02.10 @ 07:07:00  
 Time Off Btm: 2015.02.10 @ 08:18:30

**TEST COMMENT:** 1st Opening 15 Minutes weak blow for 7 minutes and died  
 1st Shut-In 45 Minutes  
 2nd Opening 20 Minutes no blow flushed tool good surge no help came out of the hole no final shut in was taken



## PRESSURE SUMMARY

Time (Min.)	Pressure (psia)	Temp (deg F)	Annotation
0	1669.08	98.67	Initial Hydro-static
1	49.44	98.32	Open To Flow (1)
15	48.02	98.51	Shut-In(1)
60	479.36	100.53	End Shut-In(1)
61	51.07	100.35	Open To Flow (2)
71	55.58	100.85	Shut-In(2)
72	1532.23	101.21	Final Hydro-static

## Recovery

Length (ft)	Description	Volume (bbl)
10.00	Drilling Mud	0.05

## Gas Rates

	Choke (inches)	Pressure (psia)	Gas Rate (Mcf/d)



**TRILOBITE  
TESTING, INC.**

## DRILL STEM TEST REPORT

**TOOL DIAGRAM**

Shelby Resources  
448 Union Blvd Suite 208  
Lakewood, Colorado 80228  
ATTN: Jeremy Schwartz

**2-18s-14w Barton**  
**Janice Unit #1-2**  
Job Ticket: 62072      **DST#: 3**  
Test Start: 2015.02.10 @ 05:20:00

### Tool Information

Drill Pipe:	Length: 3080.00 ft	Diameter: 3.80 inches	Volume: 43.20 bbl	Tool Weight: 2000.00 lb
Heavy Wt. Pipe:	Length: 0.00 ft	Diameter: inches	Volume: 0.00 bbl	Weight set on Packer: 20000.00 lb
Drill Collar:	Length: 208.00 ft	Diameter: 2.25 inches	Volume: 1.02 bbl	Weight to Pull Loose: 72999.00 lb
			<u>Total Volume: 44.22 bbl</u>	Tool Chased 9.00 ft
Drill Pipe Above KB:	8.00 ft			String Weight: Initial 60000.00 lb
Depth to Top Packer:	3308.00 ft			Final 60000.00 lb
Depth to Bottom Packer:	ft			
Interval between Packers:	40.00 ft			
Tool Length:	68.00 ft			
Number of Packers:	2	Diameter: 6.75 inches		

Tool Comments:

Tool Description	Length (ft)	Serial No.	Position	Depth (ft)	Accum. Lengths
------------------	-------------	------------	----------	------------	----------------

Shut-In Tool	5.00			3285.00	
Hydraulic Tool	5.00			3290.00	
Safety Joint	2.00			3292.00	
Jars	6.00			3298.00	
Packer	5.00			3303.00	28.00      Bottom Of Top Packer
Packer	5.00			3308.00	
Anchor	35.00			3343.00	
Recorder	1.00	6651	Inside	3344.00	
Recorder	1.00	8938	Outside	3345.00	
Bullnose	3.00			3348.00	40.00      Bottom Packers & Anchor
<b>Total Tool Length:</b>	<b>68.00</b>				



**TRILOBITE  
TESTING, INC.**

# DRILL STEM TEST REPORT

**FLUID SUMMARY**

Shelby Resources  
448 Union Blvd Suite 208  
Lakewood, Colorado 80228  
ATTN: Jeremy Schwartz

**2-18s-14w Barton**  
**Janice Unit #1-2**  
Job Ticket: 62072      **DST#: 3**  
Test Start: 2015.02.10 @ 05:20:00

## Mud and Cushion Information

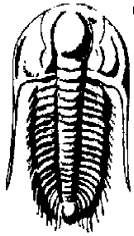
Mud Type: Gel Chem	Cushion Type:	Oil API:	deg API
Mud Weight: 9.00 lb/gal	Cushion Length: ft	Water Salinity:	ppm
Viscosity: 63.00 sec/qt	Cushion Volume: bbl		
Water Loss: 10.19 in <sup>3</sup>	Gas Cushion Type:		
Resistivity: ohm.m	Gas Cushion Pressure: psia		
Salinity: 8400.00 ppm			
Filter Cake: 1.00 inches			

## Recovery Information

Recovery Table

Length ft	Description	Volume bbl
10.00	Drilling Mud	0.049

Total Length: 10.00 ft      Total Volume: 0.049 bbl  
 Num Fluid Samples: 0      Num Gas Bombs: 0      Serial #:  
 Laboratory Name:      Laboratory Location:  
 Recovery Comments:



**TRILOBITE**  
**TESTING, INC.**

## DRILL STEM TEST REPORT

**GAS RATES**

Shelby Resources  
448 Union Blvd Suite 208  
Lakewood, Colorado 80228  
ATTN: Jeremy Schwartz

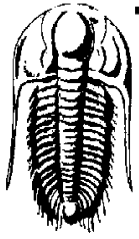
**2-18s-14w Barton**  
**Janice Unit #1-2**  
Job Ticket: 62072      **DST#: 3**  
Test Start: 2015.02.10 @ 05:20:00

### Gas Rates Information

Temperature: 59 (deg F)  
Relative Density: 0.65  
Z Factor: 0.8

Gas Rates Table

Flow Period	Elapsed Time	Choke (inches)	Pressure (psia)	Gas Rate (Mcf/d)
		0.00	0.00	0.00



**TRILOBITE  
TESTING, INC.**

## DRILL STEM TESTING - DATA LISTING

Shelby Resources  
448 Union Blvd Suite 208  
Lakewood, Colorado 80228  
ATTN: Jeremy Schwartz

**2-18s-14w Barton**  
**Janice Unit #1-2**  
Job Ticket: 62072      **DST#: 3**  
Test Start: 2015.02.10 @ 05:20:00

Serial # 6651 Inside				Serial # 6651 Inside			
Comments	Time (Min.)	Pressure (psia)	Temp. (deg F)	Comments	Time (Min.)	Pressure (psia)	Temp. (deg F)
	0.0	12.32	73.4		33.0	39.66	85.4
	1.0	12.48	72.0		34.0	51.14	85.4
	2.0	12.56	70.2		35.0	69.43	86.1
	3.0	12.58	68.5		36.0	69.56	86.1
	4.0	20.00	82.2		37.0	74.93	86.1
	5.0	12.33	84.0		38.0	99.59	86.2
	6.0	12.26	84.8		39.0	99.80	86.1
	7.0	22.88	84.4		40.0	129.69	86.2
	8.0	22.91	84.6		41.0	128.08	86.1
	9.0	25.87	84.9		42.0	159.84	86.1
	10.0	39.30	86.3		43.0	199.65	86.1
	11.0	39.18	86.4		44.0	236.94	86.2
	12.0	39.14	86.4		45.0	240.60	86.3
	13.0	39.11	86.3		46.0	274.01	86.4
	14.0	39.09	86.3		47.0	300.85	86.6
	15.0	39.07	86.3		48.0	331.19	86.7
	16.0	39.05	86.2		49.0	344.91	87.0
	17.0	39.04	86.2		50.0	375.61	86.9
	18.0	39.02	86.1		51.0	408.95	87.0
	19.0	39.01	86.1		52.0	437.48	87.3
	20.0	38.99	86.0		53.0	467.21	87.4
	21.0	38.98	86.0		54.0	498.50	87.7
	22.0	38.97	85.9		55.0	527.30	88.0
	23.0	38.97	85.9		56.0	559.23	88.2
	24.0	38.96	85.8		57.0	590.65	88.5
	25.0	38.96	85.8		58.0	623.71	88.8
	26.0	38.95	85.7		59.0	653.74	89.4
	27.0	38.95	85.7		59.5	690.70	89.5
	28.0	38.93	85.6		60.0	684.24	89.8
	29.0	38.94	85.6		60.5	724.85	89.8
	30.0	38.91	85.5		61.0	714.52	90.1
	31.0	38.91	85.5		61.5	756.53	90.1
	32.0	38.91	85.4		62.0	745.09	90.4

Printing every 1 samples

Serial # 6651 Inside				Serial # 6651 Inside			
Comments	Time (Min.)	Pressure (psia)	Temp. (deg F)	Comments	Time (Min.)	Pressure (psia)	Temp. (deg F)
	62.5	779.31	90.3		83.0	1415.03	95.0
	63.0	776.71	90.2		83.5	1453.30	95.3
	63.5	838.12	90.0		84.0	1446.41	95.5
	64.0	810.05	90.1		84.5	1517.90	95.7
	64.5	881.16	90.1		85.0	1480.07	96.0
	65.0	841.26	90.1		85.5	1548.04	96.1
	65.5	868.61	90.1		86.0	1516.33	96.3
	66.0	874.68	90.4		86.5	1569.52	96.3
	66.5	924.27	90.5		87.0	1548.93	96.9
	67.0	907.82	90.6		87.5	1609.12	97.1
	67.5	991.06	90.6		88.0	1581.99	97.8
	68.0	939.87	90.8		88.5	1634.13	97.9
	68.5	1066.90	90.9		89.0	1608.94	98.2
	69.0	974.74	91.0		89.5	1610.79	98.3
	69.5	1058.78	91.1		90.0	1688.29	98.4
	70.0	1004.10	91.3		90.5	1641.85	98.5
	70.5	1037.64	91.4		91.0	1639.84	98.7
	71.0	1035.10	91.5		91.5	1638.25	98.6
	71.5	1062.39	91.5		92.0	1637.12	98.6
	72.0	1066.33	91.7		92.5	1636.25	98.5
	72.5	1097.13	91.9		93.0	1635.21	98.5
	73.0	1110.63	92.0		93.5	1634.70	98.4
	73.5	1130.89	92.2		94.0	1633.91	98.4
	74.0	1195.54	92.3		94.5	1633.19	98.3
	74.5	1161.85	92.5		95.0	1632.84	98.3
	75.0	1221.12	92.6		95.5	1632.70	98.2
	75.5	1195.56	92.8		96.0	1615.82	98.2
	76.0	1266.65	92.9		96.5	1660.91	98.2
	76.5	1226.70	93.2		97.0	1682.19	98.5
	77.0	1281.01	93.2		97.5	1683.30	98.8
	77.5	1257.19	93.5		98.0	1665.51	99.0
	78.0	1316.73	93.6		98.5	1663.15	99.0
	78.5	1288.25	93.8		99.0	1662.19	99.0
	79.0	1354.05	93.8		99.5	1662.70	98.9
	79.5	1319.94	94.2		100.0	1661.16	98.9
	80.0	1377.26	94.2		100.5	1660.22	98.9
	80.5	1350.11	94.4	Initial Hydro-static	101.0	1666.77	98.9
	81.0	1398.91	94.5	Open To Flow (1)	101.5	48.20	98.2
	81.5	1381.20	94.8		102.0	48.37	98.4
	82.0	1402.81	94.9		102.5	48.25	98.4
	82.5	1410.02	95.0		103.0	48.29	98.3

Printing every 1 samples



Serial # 6651 Inside				Serial # 6651 Inside			
Comments	Time (Min.)	Pressure (psia)	Temp. (deg F)	Comments	Time (Min.)	Pressure (psia)	Temp. (deg F)
	103.5	48.35	98.3		124.0	77.12	98.5
	104.0	48.12	98.3		124.5	79.51	98.5
	104.5	48.37	98.3		125.0	81.99	98.5
	105.0	48.53	98.3		125.5	84.50	98.5
	105.5	48.44	98.2		126.0	87.28	98.5
	106.0	48.52	98.2		126.5	90.05	98.5
	106.5	48.91	98.2		127.0	92.85	98.6
	107.0	48.93	98.2		127.5	95.75	98.6
	107.5	48.93	98.2		128.0	98.68	98.6
	108.0	49.29	98.2		128.5	101.76	98.6
	108.5	49.30	98.2		129.0	104.90	98.6
	109.0	49.20	98.2		129.5	108.22	98.7
	109.5	49.33	98.2		130.0	111.61	98.7
	110.0	49.00	98.2		130.5	115.14	98.7
	110.5	48.53	98.2		131.0	118.67	98.7
	111.0	48.43	98.2		131.5	122.43	98.7
	111.5	48.33	98.2		132.0	126.21	98.8
	112.0	48.34	98.2		132.5	130.32	98.8
	112.5	47.22	98.2		133.0	134.34	98.8
	113.0	47.36	98.2		133.5	138.63	98.8
	113.5	47.48	98.2		134.0	142.91	98.8
	114.0	47.43	98.2		134.5	147.46	98.9
	114.5	47.47	98.2		135.0	152.13	98.9
	115.0	47.43	98.2		135.5	156.73	98.9
	115.5	47.33	98.2		136.0	161.77	98.9
	116.0	47.19	98.2		136.5	166.67	99.0
	116.5	48.33	98.2		137.0	171.71	99.0
Shut-In(1)	117.0	49.99	98.3		137.5	176.83	99.0
	117.5	51.74	98.3		138.0	182.10	99.0
	118.0	53.37	98.3		138.5	187.50	99.0
	118.5	54.96	98.3		139.0	193.09	99.1
	119.0	56.75	98.3		139.5	198.84	99.1
	119.5	58.55	98.3		140.0	204.72	99.1
	120.0	60.40	98.3		140.5	210.53	99.1
	120.5	62.25	98.3		141.0	216.62	99.1
	121.0	64.23	98.4		141.5	222.84	99.2
	121.5	66.20	98.4		142.0	229.21	99.2
	122.0	68.28	98.4		142.5	235.56	99.2
	122.5	70.50	98.4		143.0	242.19	99.2
	123.0	72.69	98.4		143.5	248.78	99.3
	123.5	74.90	98.4		144.0	255.52	99.3

Printing every 1 samples

Serial # 6651 Inside				Serial # 6651 Inside			
Comments	Time (Min.)	Pressure (psia)	Temp. (deg F)	Comments	Time (Min.)	Pressure (psia)	Temp. (deg F)
	144.5	262.47	99.3		165.0	50.00	100.1
	145.0	269.28	99.3		165.5	50.04	100.1
	145.5	276.07	99.4		166.0	50.08	100.1
	146.0	283.16	99.4		166.5	50.10	100.1
	146.5	290.12	99.4		167.0	50.12	100.1
	147.0	295.49	99.4		167.5	50.14	100.2
	147.5	302.80	99.4		168.0	50.12	100.2
	148.0	309.92	99.5		168.5	50.14	100.2
	148.5	317.10	99.5		169.0	50.17	100.2
	149.0	324.15	99.5		169.5	49.23	100.2
	149.5	331.21	99.5		170.0	1663.48	100.7
	150.0	338.34	99.6		170.5	54.53	100.3
	150.5	345.25	99.6		171.0	54.61	100.3
	151.0	352.34	99.6	Shut-In(2)	171.5	54.62	100.3
	151.5	359.09	99.6	Final Hydro-static	172.0	1547.98	101.0
	152.0	365.95	99.6		172.5	1527.96	100.9
	152.5	372.77	99.7		173.0	1575.42	101.0
	153.0	379.56	99.7		173.5	1565.30	101.1
	153.5	386.24	99.7		174.0	1565.20	101.1
	154.0	392.84	99.7		174.5	1566.12	101.1
	154.5	399.33	99.8		175.0	1567.37	101.2
	155.0	405.88	99.8		175.5	1568.72	101.2
	155.5	412.28	99.8		176.0	1513.66	101.2
	156.0	418.67	99.8		176.5	1516.55	101.3
	156.5	424.74	99.8		177.0	1542.56	101.5
	157.0	430.94	99.9		177.5	1597.89	101.6
	157.5	437.02	99.9		178.0	1484.02	101.5
	158.0	443.06	99.9		178.5	1543.65	101.6
	158.5	449.01	99.9		179.0	1534.55	101.6
	159.0	454.88	100.0		179.5	1482.75	101.6
	159.5	460.59	100.0		180.0	1524.69	101.5
	160.0	466.40	100.0		180.5	1488.57	101.4
	160.5	471.95	100.0		181.0	1442.15	101.4
End Shut-In(1)	161.0	477.45	100.0		181.5	1488.49	101.3
	161.5	470.11	100.1		182.0	1428.45	101.2
Open To Flow (2)	162.0	49.94	100.0		182.5	1462.19	100.9
	162.5	49.77	100.0		183.0	1394.04	100.8
	163.0	49.60	100.0		183.5	1440.84	100.8
	163.5	49.66	100.0		184.0	1427.36	100.7
	164.0	49.77	100.0		184.5	1365.07	100.7
	164.5	49.53	100.0		185.0	1401.36	100.6

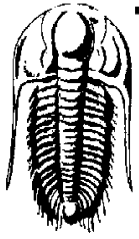
Printing every 1 samples

Serial # 6651 Inside				Serial # 6651 Inside			
Comments	Time (Min.)	Pressure (psia)	Temp. (deg F)	Comments	Time (Min.)	Pressure (psia)	Temp. (deg F)
	185.5	1346.81	100.5		206.0	830.81	93.5
	186.0	1377.47	100.4		206.5	823.23	93.2
	186.5	1311.51	100.2		207.0	801.55	93.1
	187.0	1357.55	100.2		207.5	795.03	93.0
	187.5	1341.67	100.0		208.0	781.05	92.9
	188.0	1278.10	99.8		208.5	769.51	92.8
	188.5	1314.19	99.6		209.0	718.56	92.7
	189.0	1248.17	99.4		209.5	740.54	92.5
	189.5	1289.15	99.2		210.0	687.12	92.4
	190.0	1277.22	98.7		210.5	710.50	92.1
	190.5	1212.89	98.5		211.0	648.11	91.9
	191.0	1248.90	98.4		211.5	680.17	91.9
	191.5	1186.24	98.2		212.0	620.73	91.8
	192.0	1221.44	98.0		212.5	649.90	91.8
	192.5	1164.03	97.7		213.0	592.27	91.8
	193.0	1193.44	97.7		213.5	619.20	91.8
	193.5	1132.06	97.2		214.0	561.97	91.6
	194.0	1162.69	97.2		214.5	588.47	91.5
	194.5	1156.15	96.9		215.0	534.80	91.3
	195.0	1086.50	96.9		215.5	557.91	90.5
	195.5	1127.02	96.7		216.0	507.45	89.9
	196.0	1066.34	96.5		216.5	527.21	89.5
	196.5	1101.04	96.4		217.0	484.19	89.1
	197.0	1042.80	96.1		217.5	496.31	88.8
	197.5	1072.57	96.0		218.0	456.40	88.3
	198.0	1014.40	95.8		218.5	465.64	88.1
	198.5	1041.07	95.8		219.0	423.37	87.8
	199.0	1030.76	95.5		219.5	434.93	87.7
	199.5	963.46	95.4		220.0	395.19	87.6
	200.0	1005.61	95.3		220.5	404.38	87.3
	200.5	937.12	95.2		221.0	365.81	87.0
	201.0	973.47	95.0		221.5	374.21	86.7
	201.5	902.92	94.8		222.0	339.63	86.3
	202.0	944.68	94.7		222.5	343.65	86.1
	202.5	886.40	94.6		223.0	310.76	85.8
	203.0	915.60	94.5		223.5	313.02	85.7
	203.5	854.34	94.4		224.0	282.48	85.5
	204.0	889.02	94.3		224.5	281.94	85.3
	204.5	834.23	94.1		225.0	254.24	85.0
	205.0	860.05	93.9		225.5	251.51	84.7
	205.5	808.78	93.7		226.0	226.02	84.3

Printing every 1 samples

Serial # 6651 Inside				Serial # 6651 Inside			
Comments	Time (Min.)	Pressure (psia)	Temp. (deg F)	Comments	Time (Min.)	Pressure (psia)	Temp. (deg F)
	226.5	220.58	84.0		247.0	29.28	81.5
	227.0	206.16	83.7		247.5	27.48	81.4
	227.5	190.04	83.4		248.0	26.16	81.3
	228.0	189.86	83.0		248.5	23.29	81.3
	228.5	159.52	82.8		249.0	22.96	81.2
	229.0	158.88	82.7		249.5	22.68	81.2
	229.5	126.47	82.5		250.0	22.61	81.2
	230.0	127.48	82.4		250.5	22.53	81.2
	230.5	127.58	82.4		251.0	22.38	81.2
	231.0	128.62	82.4		251.5	20.41	81.2
	231.5	128.69	82.4		252.0	14.00	81.2
	232.0	85.68	82.4		252.5	12.49	81.1
	232.5	98.32	82.1		253.0	12.51	81.1
	233.0	98.16	82.0		253.5	12.37	81.1
	233.5	84.70	82.0		254.0	12.49	77.8
	234.0	67.67	81.9		254.5	12.44	73.5
	234.5	69.22	81.9		255.0	12.59	69.2
	235.0	68.56	81.9		255.5	12.59	67.3
	235.5	68.44	81.9		256.0	12.50	65.4
	236.0	69.39	81.9		256.5	12.37	62.9
	236.5	39.58	81.9		257.0	12.58	58.9
	237.0	40.35	81.8		257.5	12.60	56.4
	237.5	40.31	81.7		258.0	12.49	55.6
	238.0	40.21	81.7		258.5	12.35	55.5
	238.5	40.46	81.8		259.0	12.37	55.9
	239.0	40.02	81.8				
	239.5	39.88	81.8				
	240.0	39.83	81.8				
	240.5	39.22	81.8				
	241.0	38.33	81.8				
	241.5	39.68	81.8				
	242.0	37.92	81.7				
	242.5	37.69	81.7				
	243.0	37.59	81.7				
	243.5	37.57	81.7				
	244.0	37.62	81.7				
	244.5	35.36	81.7				
	245.0	35.33	81.7				
	245.5	32.37	81.6				
	246.0	31.85	81.5				
	246.5	30.01	81.5				

Printing every 1 samples



**TRILOBITE  
TESTING, INC.**

## DRILL STEM TESTING - DATA LISTING

Shelby Resources  
448 Union Blvd Suite 208  
Lakewood, Colorado 80228  
ATTN: Jeremy Schwartz

**2-18s-14w Barton**  
**Janice Unit #1-2**  
Job Ticket: 62072      **DST#: 3**  
Test Start: 2015.02.10 @ 05:20:00

Serial # 8938 Outside				Serial # 8938 Outside			
Comments	Time (Min.)	Pressure (psia)	Temp. (deg F)	Comments	Time (Min.)	Pressure (psia)	Temp. (deg F)
	0.0	14.13	72.8		33.0	39.74	84.9
	1.0	13.93	71.3		34.0	73.38	84.9
	2.0	13.89	70.1		35.0	69.98	84.9
	3.0	14.52	70.1		36.0	70.00	84.9
	4.0	19.19	81.7		37.0	90.71	84.9
	5.0	14.51	83.5		38.0	100.17	84.9
	6.0	14.67	82.8		39.0	100.73	84.9
	7.0	23.34	84.2		40.0	130.48	85.0
	8.0	23.42	84.4		41.0	130.63	85.0
	9.0	26.15	84.9		42.0	160.82	85.0
	10.0	39.52	84.7		43.0	210.43	85.0
	11.0	39.33	84.7		44.0	237.45	85.1
	12.0	39.34	84.7		45.0	278.26	85.2
	13.0	39.33	84.7		46.0	285.35	85.3
	14.0	39.32	84.7		47.0	313.20	85.6
	15.0	39.33	84.7		48.0	342.62	86.1
	16.0	39.31	84.7		49.0	345.61	86.5
	17.0	39.29	84.8		50.0	376.54	86.6
	18.0	39.29	84.8		51.0	409.61	86.6
	19.0	39.29	84.8		52.0	438.14	86.7
	20.0	39.27	84.8		53.0	467.79	86.8
	21.0	39.26	84.8		54.0	499.10	86.9
	22.0	39.25	84.8		55.0	527.83	86.9
	23.0	39.25	84.8		56.0	559.82	87.1
	24.0	39.25	84.8		57.0	591.02	87.2
	25.0	39.25	84.8		58.0	624.40	87.3
	26.0	39.25	84.8		59.0	654.51	87.6
	27.0	39.26	84.8		59.5	709.57	87.8
	28.0	39.24	84.8		60.0	684.86	88.0
	29.0	39.23	84.8		60.5	751.26	88.1
	30.0	39.21	84.8		61.0	714.97	88.4
	31.0	39.20	84.8		61.5	778.43	88.4
	32.0	39.23	84.9		62.0	745.34	88.6

Printing every 1 samples

Serial # 8938 Outside				Serial # 8938 Outside			
Comments	Time (Min.)	Pressure (psia)	Temp. (deg F)	Comments	Time (Min.)	Pressure (psia)	Temp. (deg F)
	62.5	811.78	88.7		83.0	1473.93	93.8
	63.0	776.66	88.7		83.5	1444.83	94.0
	63.5	851.61	88.8		84.0	1458.80	94.1
	64.0	810.21	89.1		84.5	1474.55	94.3
	64.5	861.71	89.3		85.0	1480.58	94.4
	65.0	841.33	89.6		85.5	1563.92	94.5
	65.5	904.72	89.8		86.0	1516.95	94.7
	66.0	874.78	90.2		86.5	1584.63	94.8
	66.5	969.89	90.5		87.0	1550.13	95.0
	67.0	907.97	90.7		87.5	1643.35	95.1
	67.5	998.72	90.8		88.0	1583.09	95.4
	68.0	940.15	90.9		88.5	1640.90	95.7
	68.5	966.77	90.9		89.0	1611.59	96.1
	69.0	975.02	91.0		89.5	1611.00	96.4
	69.5	1001.86	91.1		90.0	1689.12	96.6
	70.0	1000.04	91.1		90.5	1642.22	97.4
	70.5	1036.00	91.2		91.0	1640.40	97.8
	71.0	1070.10	91.2		91.5	1638.81	98.0
	71.5	1067.53	91.2		92.0	1637.81	98.1
	72.0	1135.73	91.2		92.5	1636.90	98.2
	72.5	1099.57	91.3		93.0	1635.99	98.3
	73.0	1171.25	91.3		93.5	1635.25	98.3
	73.5	1132.12	91.4		94.0	1634.31	98.3
	74.0	1212.77	91.5		94.5	1634.12	98.4
	74.5	1162.80	91.5		95.0	1633.50	98.4
	75.0	1248.22	91.6		95.5	1633.31	98.4
	75.5	1196.40	91.6		96.0	1639.45	98.4
	76.0	1275.32	91.7		96.5	1682.90	98.5
	76.5	1227.51	91.8		97.0	1673.62	98.5
	77.0	1303.39	91.8		97.5	1669.75	98.5
	77.5	1258.63	91.9		98.0	1665.61	98.6
	78.0	1329.68	92.0		98.5	1663.59	98.6
	78.5	1289.52	92.2		99.0	1663.58	98.6
	79.0	1365.55	92.3		99.5	1662.58	98.6
	79.5	1321.23	92.5		100.0	1661.40	98.6
	80.0	1377.91	92.7		100.5	1663.60	98.7
	80.5	1352.09	92.8	Initial Hydro-static	101.0	1669.08	98.7
	81.0	1410.26	92.9	Open To Flow (1)	101.5	49.44	98.3
	81.5	1384.16	93.2		102.0	49.42	98.3
	82.0	1430.60	93.3		102.5	49.29	98.3
	82.5	1415.13	93.6		103.0	49.40	98.3

Printing every 1 samples

Serial # 8938 Outside				Serial # 8938 Outside			
Comments	Time (Min.)	Pressure (psia)	Temp. (deg F)	Comments	Time (Min.)	Pressure (psia)	Temp. (deg F)
	103.5	49.11	98.3		124.0	78.74	98.8
	104.0	49.30	98.3		124.5	81.04	98.8
	104.5	49.82	98.3		125.0	83.58	98.8
	105.0	49.54	98.3		125.5	86.26	98.8
	105.5	49.54	98.3		126.0	88.94	98.9
	106.0	49.52	98.3		126.5	91.72	98.9
	106.5	49.85	98.3		127.0	94.59	98.9
	107.0	49.85	98.3		127.5	97.41	98.9
	107.5	50.22	98.3		128.0	100.45	99.0
	108.0	50.16	98.3		128.5	103.52	99.0
	108.5	50.08	98.3		129.0	106.71	99.0
	109.0	50.21	98.4		129.5	110.03	99.0
	109.5	50.22	98.4		130.0	113.47	99.0
	110.0	49.92	98.4		130.5	117.06	99.1
	110.5	49.71	98.4		131.0	120.62	99.1
	111.0	49.28	98.4		131.5	124.27	99.1
	111.5	49.16	98.4		132.0	128.22	99.1
	112.0	48.99	98.4		132.5	132.20	99.2
	112.5	47.59	98.4		133.0	136.28	99.2
	113.0	48.56	98.4		133.5	140.52	99.2
	113.5	48.48	98.4		134.0	144.96	99.2
	114.0	48.45	98.5		134.5	149.40	99.3
	114.5	48.32	98.5		135.0	154.01	99.3
	115.0	48.26	98.5		135.5	158.83	99.3
	115.5	48.15	98.5		136.0	163.56	99.3
Shut-In(1)	116.0	48.02	98.5		136.5	168.53	99.4
	116.5	49.70	98.5		137.0	173.58	99.4
	117.0	51.29	98.5		137.5	178.71	99.4
	117.5	52.87	98.6		138.0	184.05	99.4
	118.0	54.67	98.6		138.5	189.42	99.4
	118.5	56.26	98.6		139.0	195.10	99.5
	119.0	58.00	98.6		139.5	200.86	99.5
	119.5	59.77	98.6		140.0	206.83	99.5
	120.0	61.76	98.6		140.5	212.68	99.5
	120.5	63.60	98.7		141.0	218.88	99.6
	121.0	65.53	98.7		141.5	225.14	99.6
	121.5	67.63	98.7		142.0	231.52	99.6
	122.0	69.75	98.7		142.5	237.96	99.6
	122.5	71.96	98.7		143.0	244.61	99.7
	123.0	74.27	98.8		143.5	251.19	99.7
	123.5	76.50	98.8		144.0	257.94	99.7

Printing every 1 samples

Serial # 8938 Outside				Serial # 8938 Outside			
Comments	Time (Min.)	Pressure (psia)	Temp. (deg F)	Comments	Time (Min.)	Pressure (psia)	Temp. (deg F)
	144.5	264.84	99.7		165.0	50.95	100.6
	145.0	271.64	99.8		165.5	50.97	100.6
	145.5	278.53	99.8		166.0	50.99	100.6
	146.0	285.58	99.8		166.5	51.03	100.6
	146.5	292.57	99.8		167.0	51.04	100.7
	147.0	298.09	99.9		167.5	51.06	100.7
	147.5	305.24	99.9		168.0	51.07	100.7
	148.0	312.37	99.9		168.5	51.09	100.7
	148.5	319.52	99.9		169.0	51.02	100.7
	149.0	326.58	100.0		169.5	1610.70	101.4
	149.5	333.63	100.0		170.0	55.51	100.5
	150.0	340.68	100.0		170.5	55.62	100.8
	150.5	347.67	100.0		171.0	55.64	100.8
	151.0	354.50	100.1	Shut-In(2)	171.5	55.58	100.8
	151.5	361.39	100.1		172.0	1535.93	101.2
	152.0	368.27	100.1	Final Hydro-static	172.5	1532.23	101.2
	152.5	375.04	100.1		173.0	1570.65	101.3
	153.0	381.82	100.2		173.5	1565.81	101.3
	153.5	388.46	100.2		174.0	1565.80	101.3
	154.0	395.04	100.2		174.5	1567.06	101.4
	154.5	401.59	100.2		175.0	1568.11	101.4
	155.0	407.93	100.3		175.5	1569.42	101.4
	155.5	414.39	100.3		176.0	1518.76	101.4
	156.0	420.61	100.3		176.5	1550.04	101.5
	156.5	426.88	100.3		177.0	1542.38	101.5
	157.0	432.97	100.3		177.5	1601.41	101.5
	157.5	438.97	100.4		178.0	1480.47	101.5
	158.0	445.11	100.4		178.5	1540.78	101.5
	158.5	450.97	100.4		179.0	1533.98	101.6
	159.0	456.77	100.4		179.5	1480.59	101.6
	159.5	462.52	100.5		180.0	1519.60	101.6
	160.0	468.36	100.5		180.5	1458.33	101.5
	160.5	473.87	100.5		181.0	1494.81	101.5
End Shut-In(1)	161.0	479.36	100.5		181.5	1487.66	101.5
Open To Flow (2)	161.5	51.07	100.4		182.0	1420.91	101.5
	162.0	50.87	100.5		182.5	1458.94	101.4
	162.5	50.57	100.5		183.0	1402.27	101.4
	163.0	50.57	100.5		183.5	1439.52	101.4
	163.5	50.62	100.5		184.0	1401.48	101.3
	164.0	50.31	100.5		184.5	1360.45	101.3
	164.5	50.87	100.6		185.0	1400.08	101.3

Printing every 1 samples



Serial # 8938 Outside				Serial # 8938 Outside			
Comments	Time (Min.)	Pressure (psia)	Temp. (deg F)	Comments	Time (Min.)	Pressure (psia)	Temp. (deg F)
	185.5	1337.94	101.3		206.0	830.18	98.7
	186.0	1373.30	101.4		206.5	784.13	98.2
	186.5	1318.36	101.4		207.0	803.29	97.6
	187.0	1350.44	101.5		207.5	760.27	97.0
	187.5	1337.18	101.5		208.0	774.29	96.5
	188.0	1273.87	101.5		208.5	737.54	96.0
	188.5	1314.08	101.5		209.0	743.79	95.4
	189.0	1252.99	101.5		209.5	740.07	94.9
	189.5	1285.29	101.6		210.0	713.40	94.6
	190.0	1222.49	101.6		210.5	710.28	94.3
	190.5	1253.61	101.7		211.0	683.27	94.1
	191.0	1248.01	101.7		211.5	680.11	94.0
	191.5	1180.85	101.7		212.0	654.44	93.8
	192.0	1219.35	101.7		212.5	649.90	93.7
	192.5	1155.45	101.8		213.0	581.10	93.5
	193.0	1189.31	101.8		213.5	619.20	93.4
	193.5	1132.84	101.8		214.0	554.03	93.3
	194.0	1165.27	101.8		214.5	588.53	93.2
	194.5	1105.27	101.8		215.0	523.74	93.0
	195.0	1134.51	101.8		215.5	558.08	92.9
	195.5	1126.08	101.8		216.0	498.67	92.7
	196.0	1057.58	101.8		216.5	527.28	92.6
	196.5	1098.44	101.8		217.0	467.88	92.4
	197.0	1036.19	101.7		217.5	496.58	92.3
	197.5	1069.21	101.7		218.0	439.00	92.2
	198.0	1010.50	101.7		218.5	465.85	92.1
	198.5	1039.09	101.7		219.0	408.16	91.9
	199.0	995.94	101.6		219.5	435.25	91.8
	199.5	1019.99	101.6		220.0	377.20	91.6
	200.0	1003.73	101.5		220.5	404.78	91.5
	200.5	932.16	101.4		221.0	348.92	91.3
	201.0	972.68	101.3		221.5	374.61	91.2
	201.5	901.97	101.2		222.0	326.88	91.1
	202.0	941.90	101.0		222.5	343.91	90.9
	202.5	875.27	100.9		223.0	296.50	90.8
	203.0	915.12	100.7		223.5	313.48	90.6
	203.5	852.23	100.5		224.0	267.78	90.5
	204.0	885.13	100.3		224.5	282.48	90.4
	204.5	831.03	100.0		225.0	242.08	90.3
	205.0	856.87	99.4		225.5	251.98	90.1
	205.5	804.94	99.1		226.0	211.84	90.0

Printing every 1 samples

Serial # 8938 Outside				Serial # 8938 Outside			
Comments	Time (Min.)	Pressure (psia)	Temp. (deg F)	Comments	Time (Min.)	Pressure (psia)	Temp. (deg F)
	226.5	221.33	89.8		247.0	30.17	85.0
	227.0	188.01	89.7		247.5	28.33	84.5
	227.5	191.09	89.5		248.0	26.59	84.2
	228.0	164.44	89.4		248.5	24.26	84.1
	228.5	160.41	89.2		249.0	24.06	84.1
	229.0	137.79	89.1		249.5	23.92	84.2
	229.5	128.26	88.8		250.0	23.85	84.2
	230.0	128.40	88.6		250.5	23.77	84.2
	230.5	130.30	88.5		251.0	22.05	84.2
	231.0	129.44	88.4		251.5	19.24	84.2
	231.5	129.56	88.3		252.0	13.45	84.1
	232.0	92.95	88.1		252.5	12.45	82.9
	232.5	99.27	87.9		253.0	12.57	82.3
	233.0	99.16	87.8		253.5	12.53	82.1
	233.5	61.98	87.7		254.0	12.50	80.1
	234.0	69.34	87.4		254.5	12.98	72.0
	234.5	70.02	87.3		255.0	13.20	69.2
	235.0	69.43	87.2		255.5	12.98	67.1
	235.5	69.35	87.1		256.0	13.00	65.5
	236.0	57.56	87.0		256.5	13.19	63.1
	236.5	41.10	86.7		257.0	13.18	61.3
	237.0	41.24	86.6		257.5	13.32	60.5
	237.5	41.19	86.5		258.0	13.09	60.2
	238.0	40.99	86.4		258.5	13.13	59.9
	238.5	41.29	86.3				
	239.0	40.79	86.2				
	239.5	40.72	86.2				
	240.0	40.71	86.1				
	240.5	40.55	86.1				
	241.0	38.51	86.0				
	241.5	38.72	85.9				
	242.0	38.62	85.9				
	242.5	38.57	85.8				
	243.0	38.51	85.8				
	243.5	38.47	85.7				
	244.0	37.44	85.7				
	244.5	36.22	85.6				
	245.0	36.24	85.6				
	245.5	33.35	85.5				
	246.0	32.49	85.4				
	246.5	30.10	85.4				

Printing every 1 samples