

ROCK TYPES



ACCESSORIES

FOSSIL

- ∩ Bioclastic or Fragmental
- F Fossils < 20%

STRINGER

- ∩ Chert
- Limestone
- Siltstone
- Shale
- red shale

TEXTURE

- C Chalky

OTHER SYMBOLS

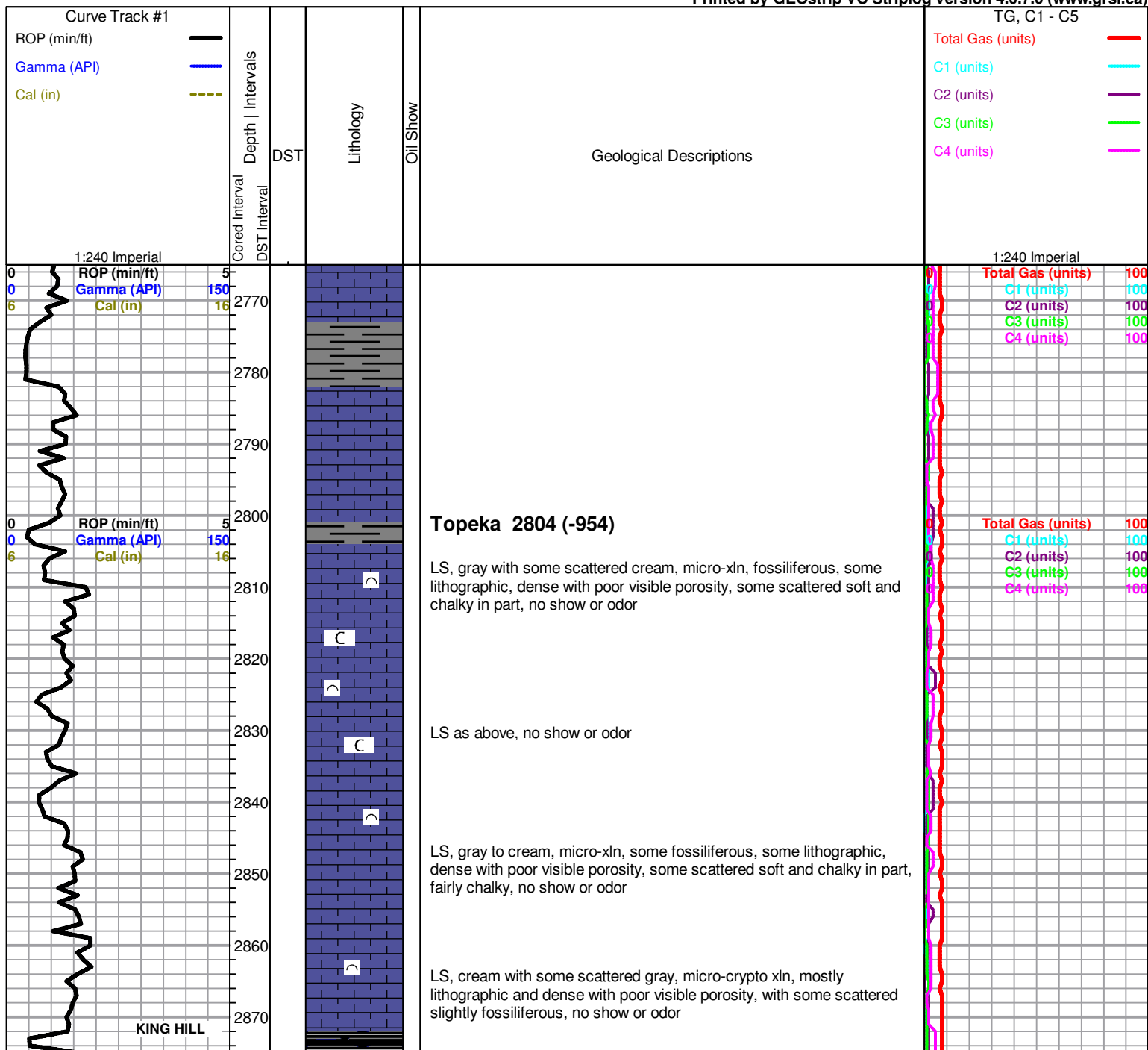
Oil Show

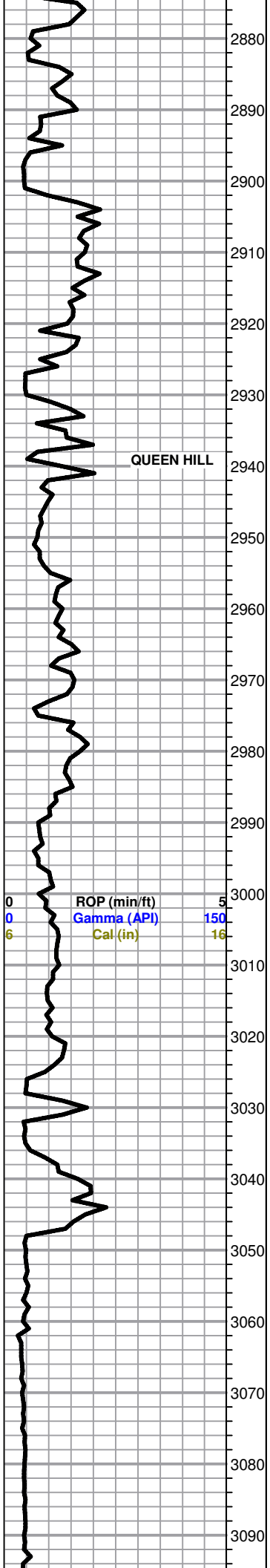
- Good Show
- Fair Show 50-75
- Poor Show 25-50
- Spotted or Trace 1-25
- Questionable Stn
- D Dead Oil Stn
- Fluorescence
- * Gas

DST

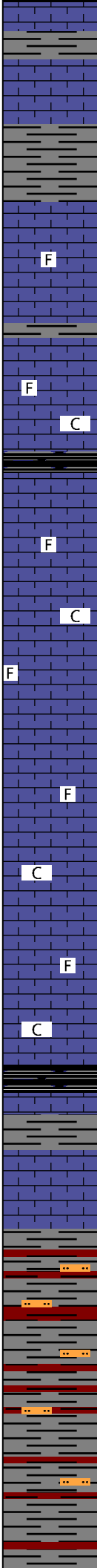
- DST Int
- DST alt

Printed by GEOstrip VC Striplog version 4.0.7.0 (www.grsi.ca)





QUEEN HILL



LS as above, no show or odor

LS, gray to cream, micro-xln, some slightly fossiliferous, some lithographic, dense with poor visible porosity, no show or odor

LS as above, also with some scattered soft and chalky in part, no show or odor

LS, cream to gray, micro-xln, some slightly fossiliferous, some lithographic, dense with poor visible porosity, also with some scattered soft and chalky in part, no show or odor

LS, cream to gray, micro-crypto xln, mostly lithographic and dense with poor visible porosity, some scattered slightly fossiliferous, dense with poor visible porosity, no show or odor

LS as above, no show or odor

LS, cream to light gray, micro-xln, mostly lithographic and dense with poor visible porosity, some scattered slightly fossiliferous, with some soft and chalky in part, no show or odor

Heebner 3024 (-1174)

Shale, black carbonaceous

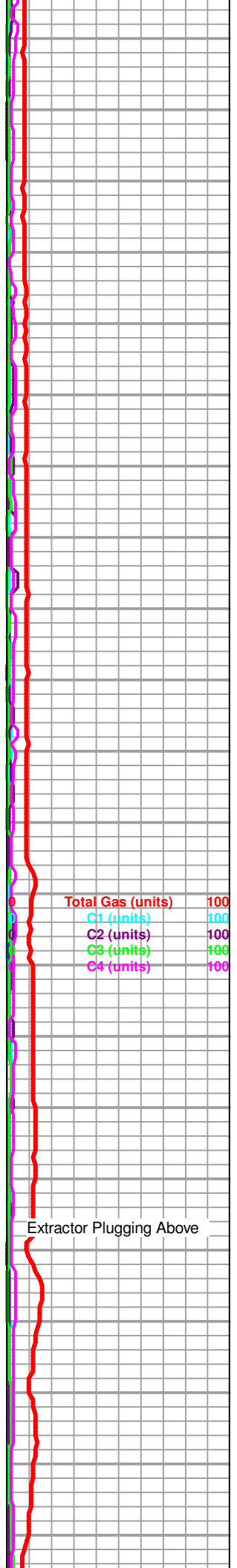
Toronto 3036 (-1186)

LS, cream with some scattered light gray and white, micro-xln, dense with poor visible porosity, with some soft and chalky in part, no show or odor

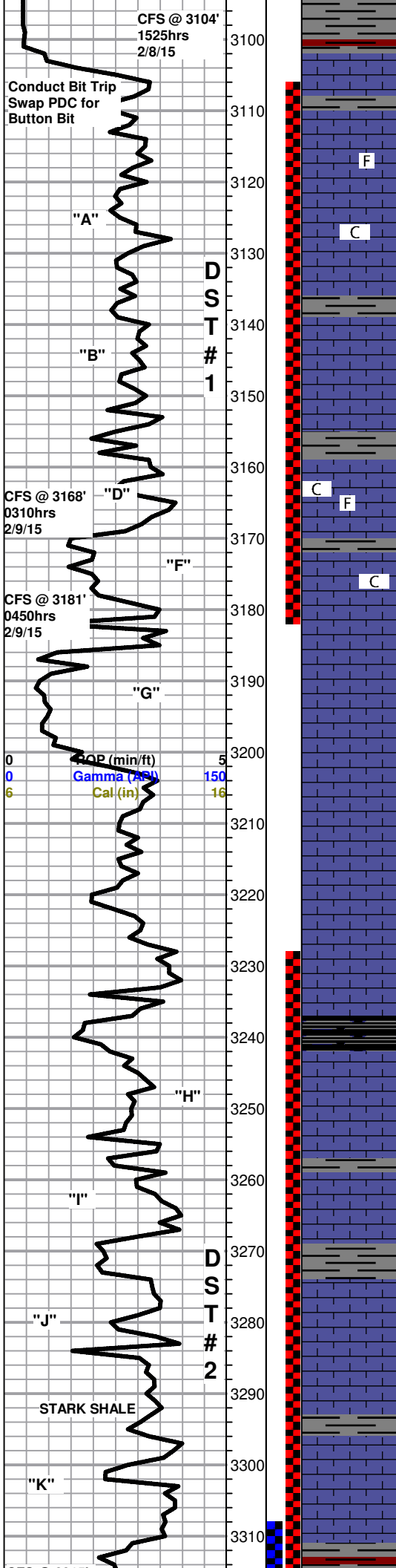
Douglas Shale 3046 (-1196)

Shale, mostly gray with some scattered red, some silty, soft and waxy

Shale as above, mostly soft and waxy, some scattered blocky and dense, less silty



Extractor Plugging Above



Brown Lime 3102 (-1252)

LS, brown, micro-xln, fossiliferous and dense with no visible porosity, no show or odor

Lansing 3110 (-1260)

LS, cream to gray, micro-xln, some slightly fossiliferous, some lithographic, dense with poor visible porosity, no show or odor

LS, cream to light gray, micro-xln, mostly lithographic and dense with poor visible porosity, no show or odor

LS, cream, micro-xln, lithographic and dense with poor visible porosity, few chips (<5%) with very scattered slight edge pinpoint porosity and very slight poor brown stain on edge, upon break chips slightly chalky with VSSFO, no odor

LS, cream, micro-xln, lithographic and dense with poor visible porosity, no show or odor

LS, cream, micro-xln, lithographic and dense with poor visible porosity, trace sub-oolitic, no show or odor

3168' 30" LS, cream, micro-xln, mostly lithographic and dense with poor visible porosity, some very scattered slightly fossiliferous, trace sub-oolitic, few chips (<5%) with very scattered edge pinpoint porosity with poor slight brown stain in porosity only, NSFO, no odor

3168' 60" LS, cream with some gray, micro-xln, mostly lithographic and dense with poor visible porosity, some scattered slightly fossiliferous, no show or odor

3181' 30" LS, cream, micro-xln, mostly lithographic and dense with poor visible porosity, some very scattered sub-oolitic to oolitic, some scattered poor to fair pinpoint to inter-oolite porosity with scattered to very scattered brown stain mostly in porosity only with slight to fair show gas bubbles as well, few chips with slightly vuggy edges, slightly chalky, NSFO, fair odor

3181' 60" Mostly same as above, NSFO, good odor

LS, cream to light gray, micro-xln, some lithographic and dense with poor visible porosity, some oomoldic with poor visible oomold porosity, few scattered chips with slight poor brown stain in oomolds only, upon break VSSFO in few chips, fairly chalky, fair odor

LS as above with oomoldic dropping out, mostly lithographic and dense with poor visible porosity, slightly chalky, poor odor

LS, cream to light gray with some scattered light brown, micro-xln, lithographic and dense with poor visible porosity, slightly chalky, no show or odor

LS, cream to light gray and brown, micro-xln, lithographic and dense with poor visible porosity, no show or odor

Muncie Creek 3236 (-1386)

LS, gray to cream with some scattered brown, micro-xln, lithographic and dense with poor visible porosity, with some very scattered sub-oolitic to sub-oomoldic with poor to fair visible porosity and scattered to very scattered brown stain mostly in and around porosity, few chips with some scattered small vugs to fair vuggy edges, found 2 chips fairly vuggy with mostly saturated to saturated brown stain, upon break SSFO, fair odor

LS, cream to light gray, micro-xln, mostly lithographic and dense with poor visible porosity, some very scattered sub-oolitic to sub-oomoldic with very scattered poor brown stain mostly in porosity only, few chips with several very small very scattered vugs, NSFO, poor odor

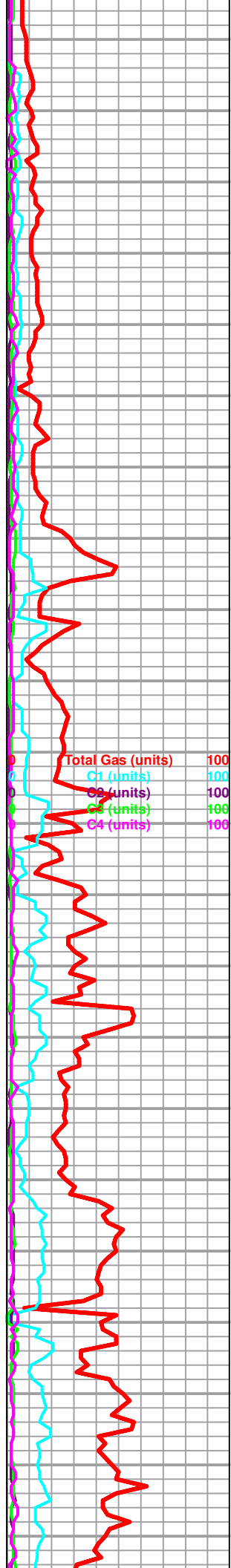
LS, gray to cream and brown, micro-xln, lithographic and dense with poor visible porosity, no show or odor

LS, cream to gray, micro-xln, lithographic and dense with poor visible porosity, no show or odor

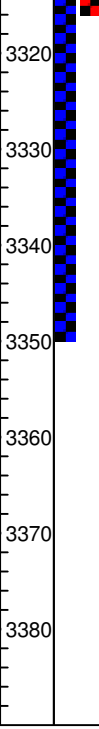
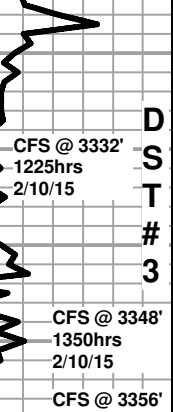
LS, cream to gray with some scattered white, micro-xln, lithographic and dense with poor visible porosity, some scattered soft and chalky in part, no show or odor

3315' 30" LS, cream with some scattered gray and white, micro-xln, lithographic and dense with poor visible porosity, no show or odor

BKC 3311 (-1461)



CFS @ 3315'
0010hrs
2/10/15



3315' 60" LS as above, with influx gray shale with trace red, no show or odor

Conglomerate as above, no show or odor

Arbuckle 3340 (-1490)

3348' 30" Cong. as above, with some very scattered dolomite, white to cream, micro-xln, sub-sucrosic and dense with poor visible porosity, few chips sucrosic with fair sub-rhombic to rhombic development and fair visible porosity with scattered to mostly saturated brown to black stain, fairly friable, one chip fairly vuggy with good visible porosity, upon break fair to good show free oil, fair odor

3348' 60" Dolomite, white to cream, micro-xln, mostly sub-sucrosic with poor to fair sub-rhombic development and poor to fair visible porosity with scattered to very scattered brown to black stain, upon break some chips have fair to good show free oil and show fair inter-xln porosity with fair to good inter-xln stain, few chips with fair porosity and mostly saturated stain, fair odor

3356' 60" Dolomite, white, micro-xln, mostly dense with poor visible porosity, some sub-sucrosic with scattered poor to fair sub-rhombic development and poor to fair visible inter-xln porosity, some barren, some with scattered brown to black stain, upon break some chips with fair show free oil (brown to black heavy droplets), fair odor

