



**TRILOBITE
TESTING, INC.**

DRILL STEM TEST REPORT

Culbreath Oil & Gas

2-10s-29w-Sherdian Co

1532 Peoria AVE
Tulsa OK 74120

Southwind #70

ATTN: Steve Murphy

Job Ticket: 61629

DST#: 1

Test Start: 2015.01.03 @ 01:44:36

GENERAL INFORMATION:

Formation: **LKC E-F**

Deviated: No Whipstock: ft (KB)

Time Tool Opened: 04:45:26

Time Test Ended: 09:42:15

Test Type: Conventional Bottom Hole (Initial)

Tester: Tate Lang

Unit No: 77

Interval: 3956.00 ft (KB) To 3974.00 ft (KB) (TVD)

Reference Elevations: 2781.00 ft (KB)

Total Depth: 3974.00 ft (KB) (TVD)

2769.00 ft (CF)

Hole Diameter: 7.88 inches Hole Condition: Good

KB to GR/CF: 12.00 ft

Serial #: 8898

Outside

Press @ Run Depth: 136.05 psig @ 3957.00 ft (KB)

Capacity: 8000.00 psig

Start Date: 2015.01.03

End Date:

2015.01.03

Last Calib.:

2015.01.03

Start Time: 01:44:37

End Time:

09:42:16

Time On Btm:

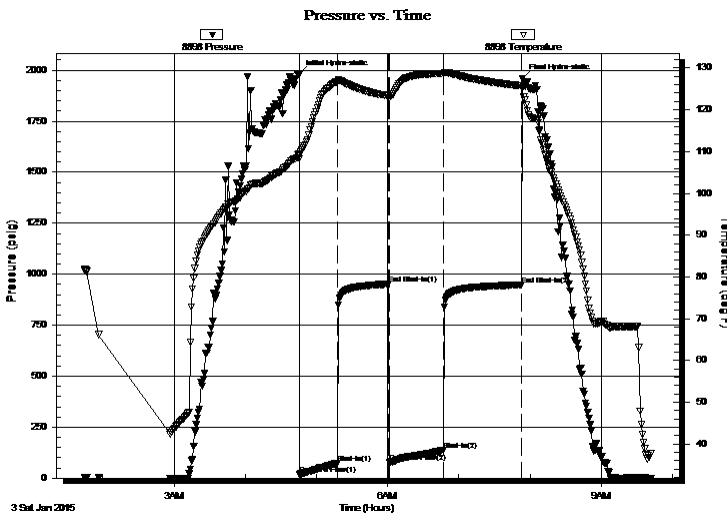
2015.01.03 @ 04:45:16

Time Off Btm:

2015.01.03 @ 07:53:36

TEST COMMENT: 30-Strong blow built to 11 in
45-Dead no blow back
45-B.O.B. in 39 mins
60-Dead no blow back

PRESSURE SUMMARY



Time (Min.)	Pressure (psig)	Temp (deg F)	Annotation
0	1981.02	109.51	Initial Hydro-static
1	19.25	108.24	Open To Flow (1)
33	72.13	126.80	Shut-In(1)
76	951.60	123.39	End Shut-In(1)
77	77.41	122.72	Open To Flow (2)
122	136.05	128.74	Shut-In(2)
188	948.23	125.73	End Shut-In(2)
189	1958.55	125.16	Final Hydro-static

Recovery

Length (ft)	Description	Volume (bbl)
15.00	100%M	0.21
248.00	SMCW 10%M 90%W	3.48

Gas Rates

Choke (inches)	Pressure (psig)	Gas Rate (Mcf/d)



**TRILOBITE
TESTING, INC.**

DRILL STEM TEST REPORT

FLUID SUMMARY

Culbreath Oil & Gas

2-10s-29w-Sherdian Co

1532 Peoria AVE
Tulas OK 74120

Southwind #70

Job Ticket: 61629

DST#: 1

ATTN: Steve Murphy

Test Start: 2015.01.03 @ 01:44:36

Mud and Cushion Information

Mud Type: Gel Chem

Cushion Type:

Oil API:

deg API

Mud Weight: 9.00 lb/gal

Cushion Length:

ft

Water Salinity:

42000 ppm

Viscosity: 45.00 sec/qt

Cushion Volume:

bbbl

Water Loss: 7.20 in³

Gas Cushion Type:

Resistivity: ohm.m

Gas Cushion Pressure:

psig

Salinity: 3000.00 ppm

Filter Cake: 1.00 inches

Recovery Information

Recovery Table

Length ft	Description	Volume bbbl
15.00	100%M	0.210
248.00	SMCW 10%M 90%W	3.479

Total Length: 263.00 ft Total Volume: 3.689 bbl

Num Fluid Samples: 0

Num Gas Bombs: 0

Serial #:

Laboratory Name:

Laboratory Location:

Recovery Comments: .401 @ 33F = 42000

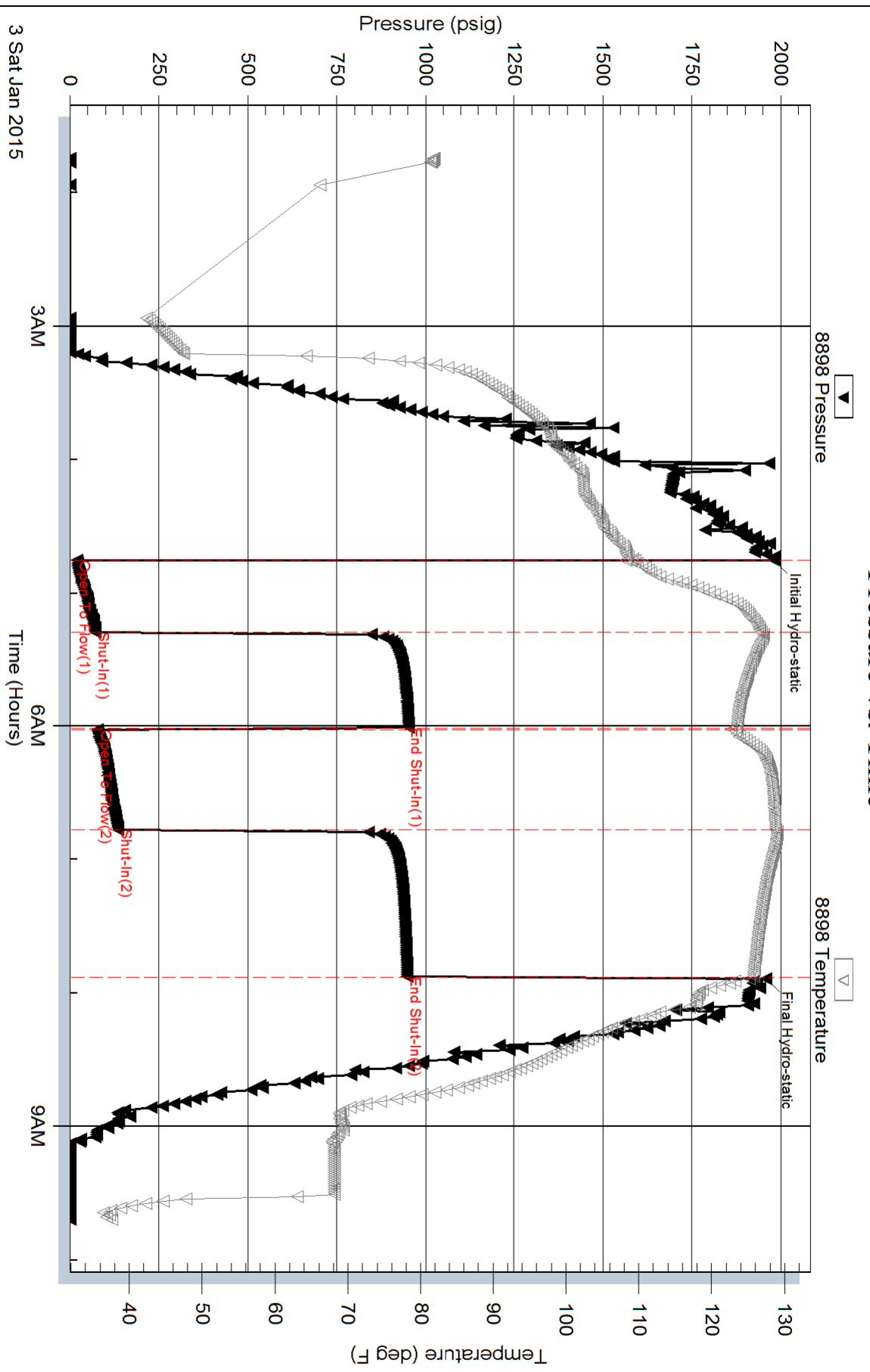
Serial #: 8898

Outside Culbreath Oil & Gas

Southwind #70

DST Test Number: 1

Pressure vs. Time



Trilobite Testing, Inc

Ref. No: 61629

Printed: 2015.01.03 @ 10:11:51

Serial #: 8897

Inside

Culbreath Oil & Gas

Southwind #70

DST Test Number: 1

