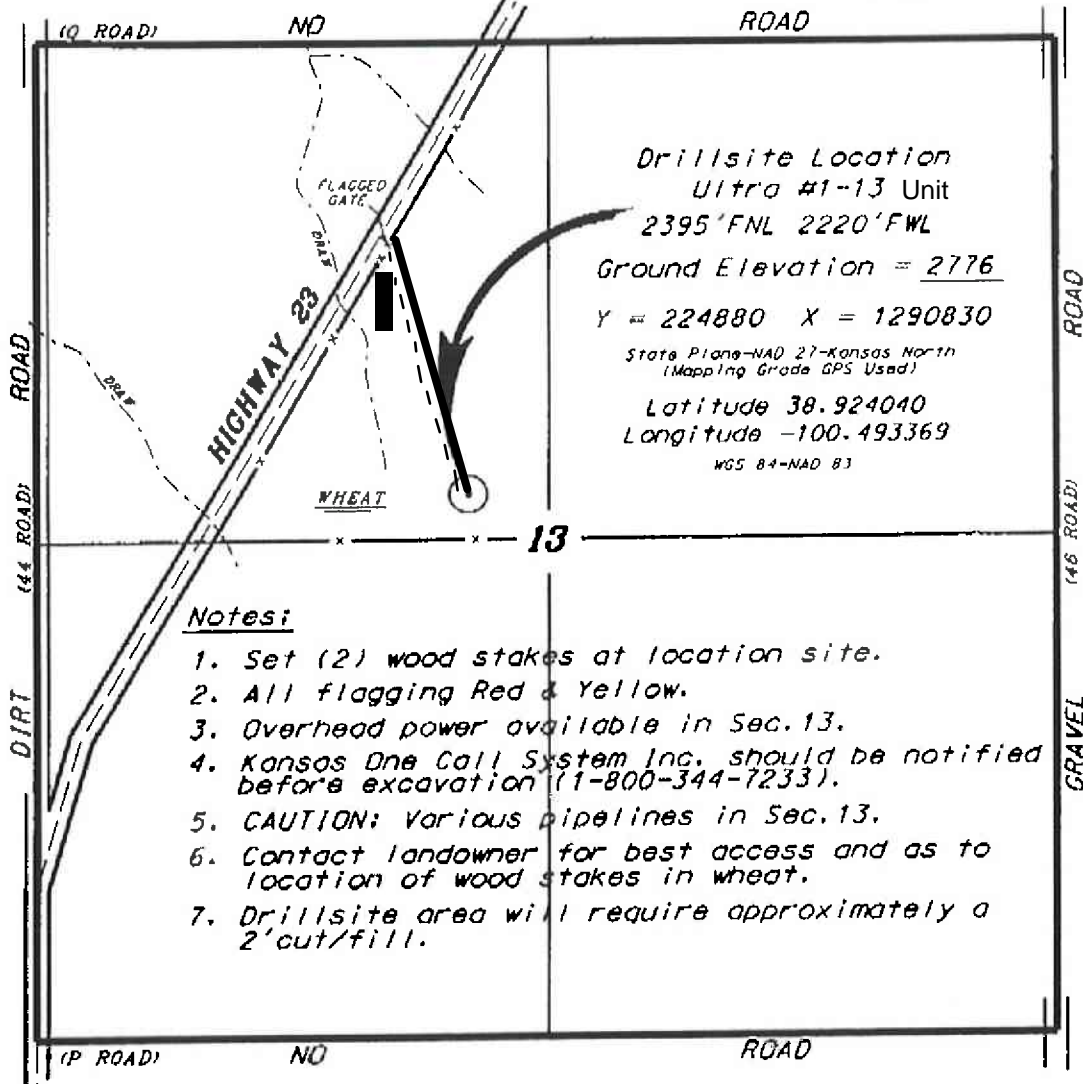


L.D DRILLING, INC.
ULTRA LEASE
NW. 1/4, SECTION 13, T13S, R29W
GOVE COUNTY, KANSAS

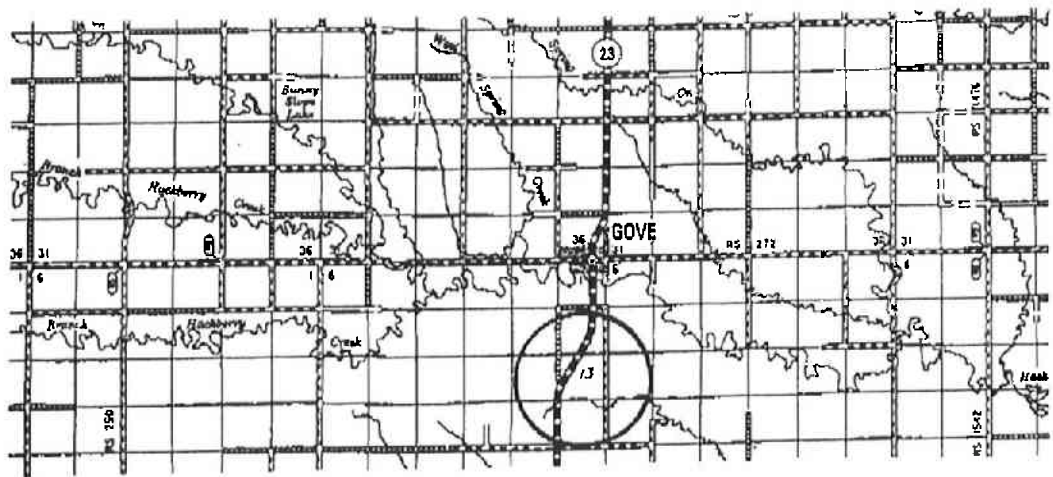
Directions:
From the intersection of Highway 23 and E-W county road 5 in Gove, Kansas go 2.0 miles South on Highway 23 to the intersection of Highway 23 and the N. line of Section 13, then go 0.46 miles South, then go 0.02 miles West to location.



Ingress and egress to location as shown on this plat is per usage only and may not be legally opened for public use. Contact landowner, tenant and county road department for access.

Notes:

1. Set (2) wood stakes at location site.
2. All flagging Red & Yellow.
3. Overhead power available in Sec.13.
4. Kansas One Call System Inc. should be notified before excavation (1-800-344-7233).
5. CAUTION: Various pipelines in Sec.13.
6. Contact landowner for best access and as to location of wood stakes in wheat.
7. Drillsite area will require approximately a 2'cut/fill.



Controlling data is based upon the best maps and photographs available to us and upon a regular section of land containing 640 acres.
 Approximate section lines were determined using the normal standards of care of oilfield surveyors practicing in the state of Kansas. The section corners, which establish the precise section lines, were not necessarily located, and the exact location of the drillsite location in the section is not guaranteed. Therefore, the operator securing this service and accepting this plat and all other parties relying thereon agree to hold Central Kansas Oilfield Services, Inc., its officers and employees harmless from all claims, costs and expenses and all liabilities released from any liability from incidental or consequential damages.
 Elevations derived from National Geodetic Vertical Datum.

Date March 10, 2015