



**GAMMA RAY
NEUTRON
COMPLETION LOG**

Company HAAS PETROLEUM, LLC
 Well EAST LIDIKAY #18-HP
 Field PAOLA - RANTOUL
 County FRANKLIN
 State KANSAS

Company HAAS PETROLEUM, LLC
 Well EAST LIDIKAY #18-HP
 Field PAOLA - RANTOUL
 County FRANKLIN State KANSAS

Location: API #: 15-059-26875-00-00
 1860' FSL & 170' FEL
 NE SE NE SE
 SEC 4 TWP 16S RGE 21E
 Permanent Datum GL Elevation 993' EST
 Log Measured From GL
 Drilling Measured From GL
 Elevation K.B. D.F. G.L. 993' EST.

Date	2-11-15
Run Number	1 NW
Depth Driller	840'
Depth Logger	838.7'
Top Log Interval	0
Bottom Logged Interval	838.7'
Fluid Level	FULL
Type Fluid	WATER
Production Casing	2 7/8" @ TD @
Max. Recorded Temp.	
Estimated Cement Top	
Calculated Cement Top	
Amount & Type Cement	
Amount & Type Admix	
Drilling Contractor	
Equipment Number	103
Location	SOLOMON, B.
Recorded By	HAAS, J.
Witnessed By	

<<< Fold Here >>>

All interpretations are opinions based on inferences from electrical or other measurements and we cannot and do not guarantee the accuracy or correctness of any interpretation, and we shall not, except in the case of gross or willful negligence on our part, be liable or responsible for any loss, costs, damages, or expenses incurred or sustained by anyone resulting from any interpretation made by any of our officers, agents or employees. These interpretations are also subject to our general terms and conditions set out in our current Price Schedule.

Comments

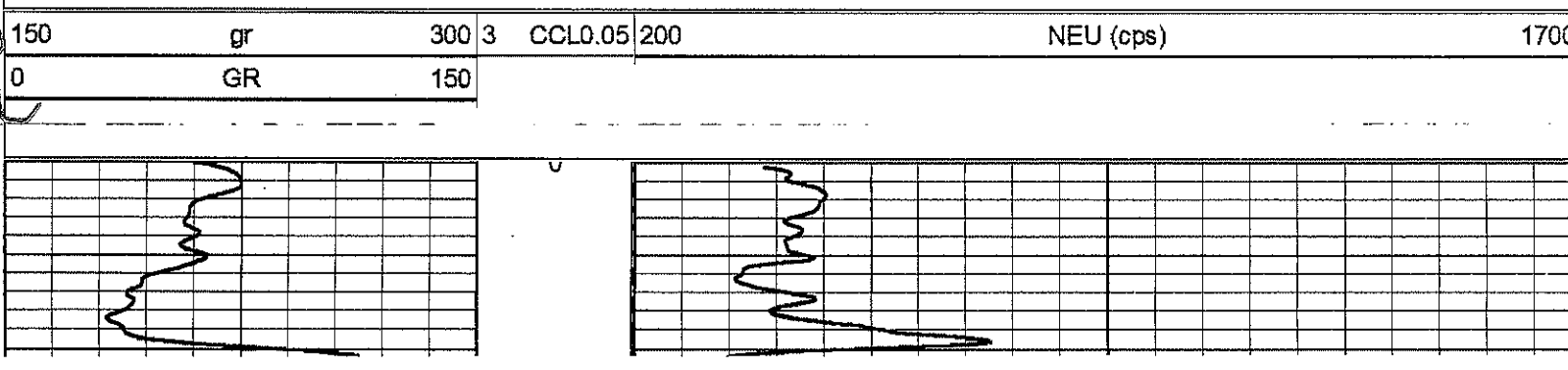
TAHNK YOU.

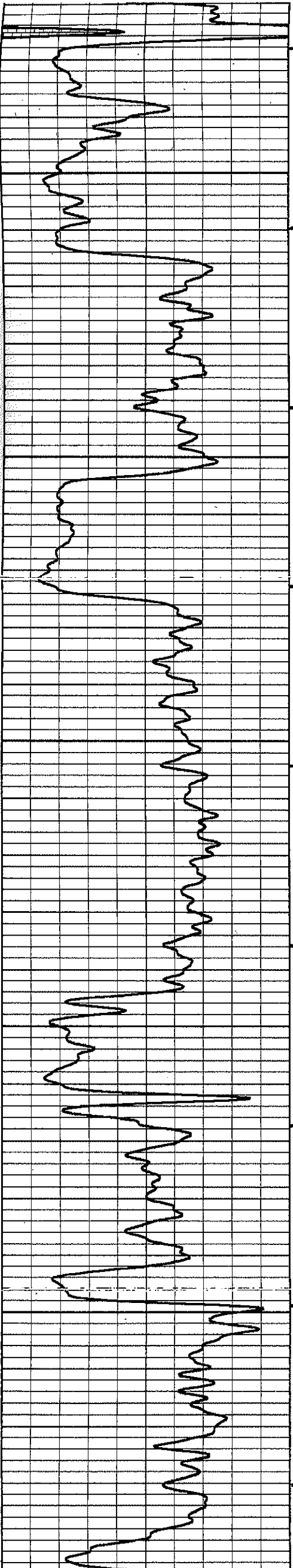
Sensor	Offset (ft)	Schematic	Description	Len (ft)	OD (in)	Wt (lb)
			GR-TITAN_169 (TIT169_001) Titan 1 11/16" Gamma Ray	4.75	1.69	20.00

GR	7.59		GR-TITAN_169 (TIT169_001) Titan 1 11/16" Gamma Ray	4.75	1.69	20.00
CCL	5.05		CCL-TITAN_169 (TIT169) Titan 1 11/16" Logging CCL	1.83	1.69	7.50
NEU	0.63		NEU-TITAN (TIT801) TITAN 1 11/16" Neutron	4.33	1.69	25.00

Dataset: #EAST LIDIKAY #18 -hp.db: field/well/run1/pass1
 Total Length: 10.92 ft
 Total Weight: 52.50 lb
 O.D. 1.69 in

Database File: e:\#east lidikay #18 -hp.db
 Dataset Pathname: pass1
 Presentation Format: gr-n-ccl
 Dataset Creation: Wed Feb 11 08:59:11 2015 by Log Std Casedhole 09061
 Charted by: Depth in Feet scaled 1:240





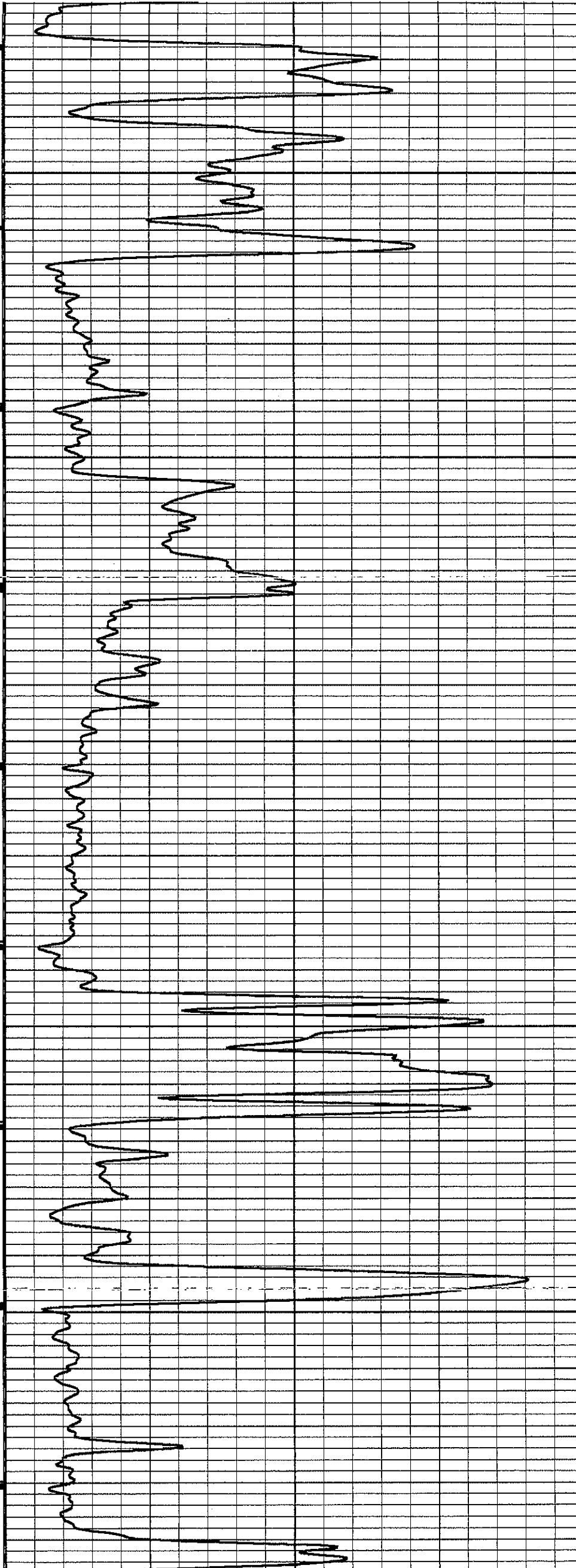
50

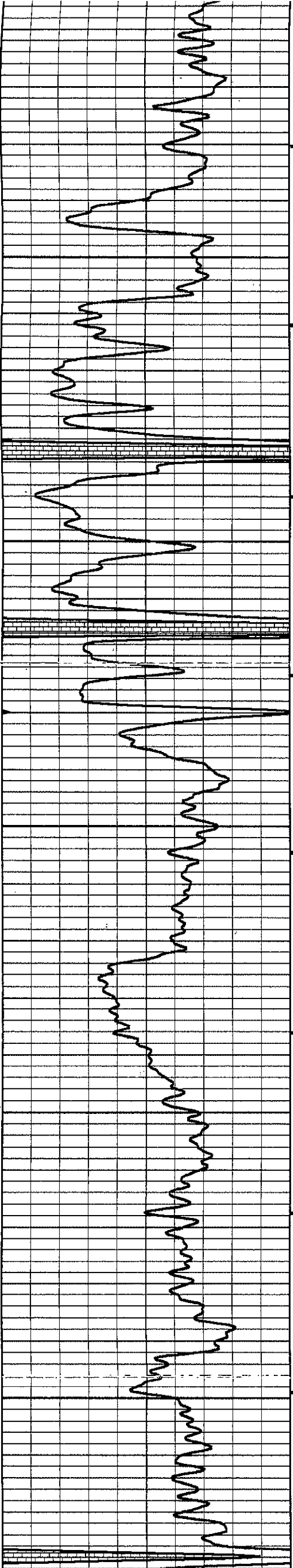
100

150

200

250





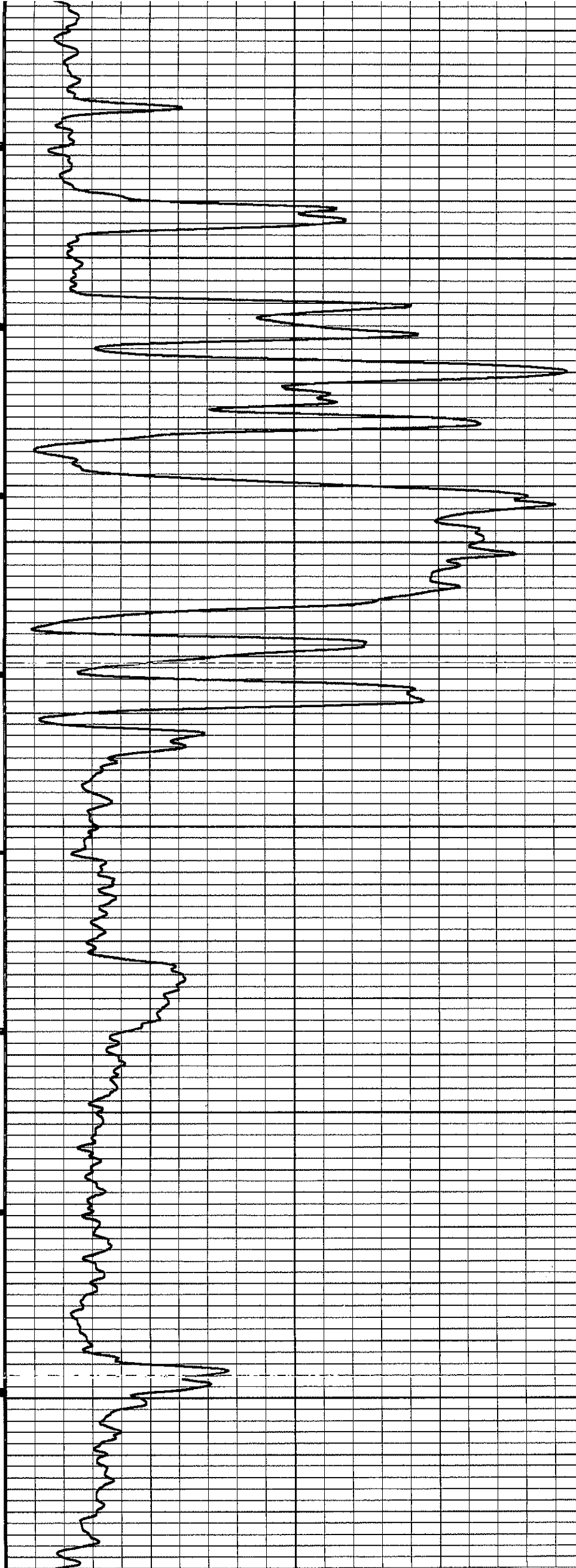
300

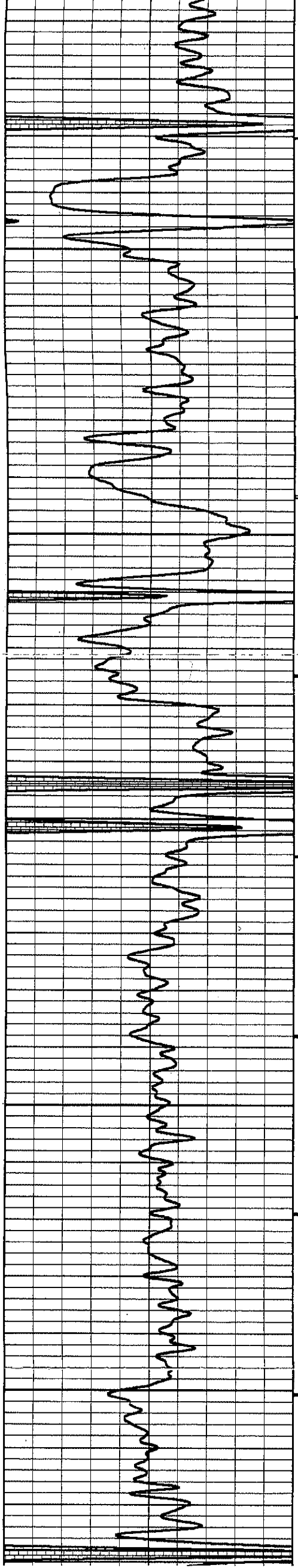
350

400

450

500





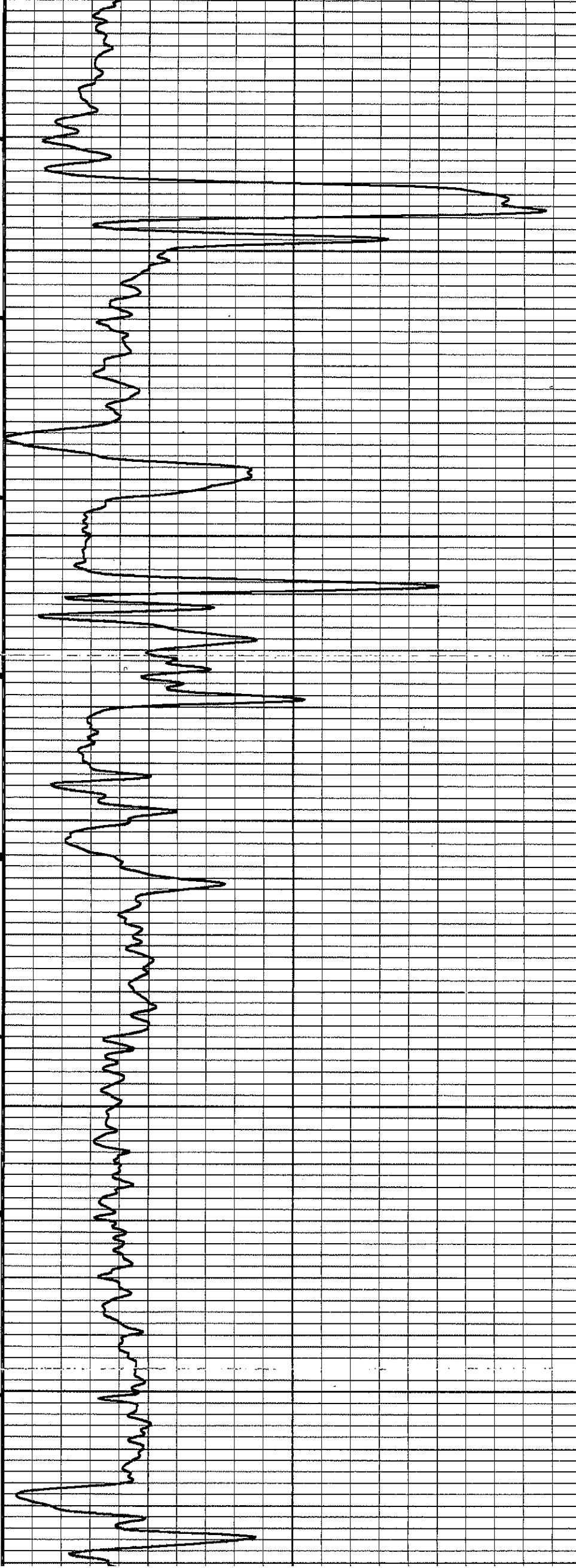
550

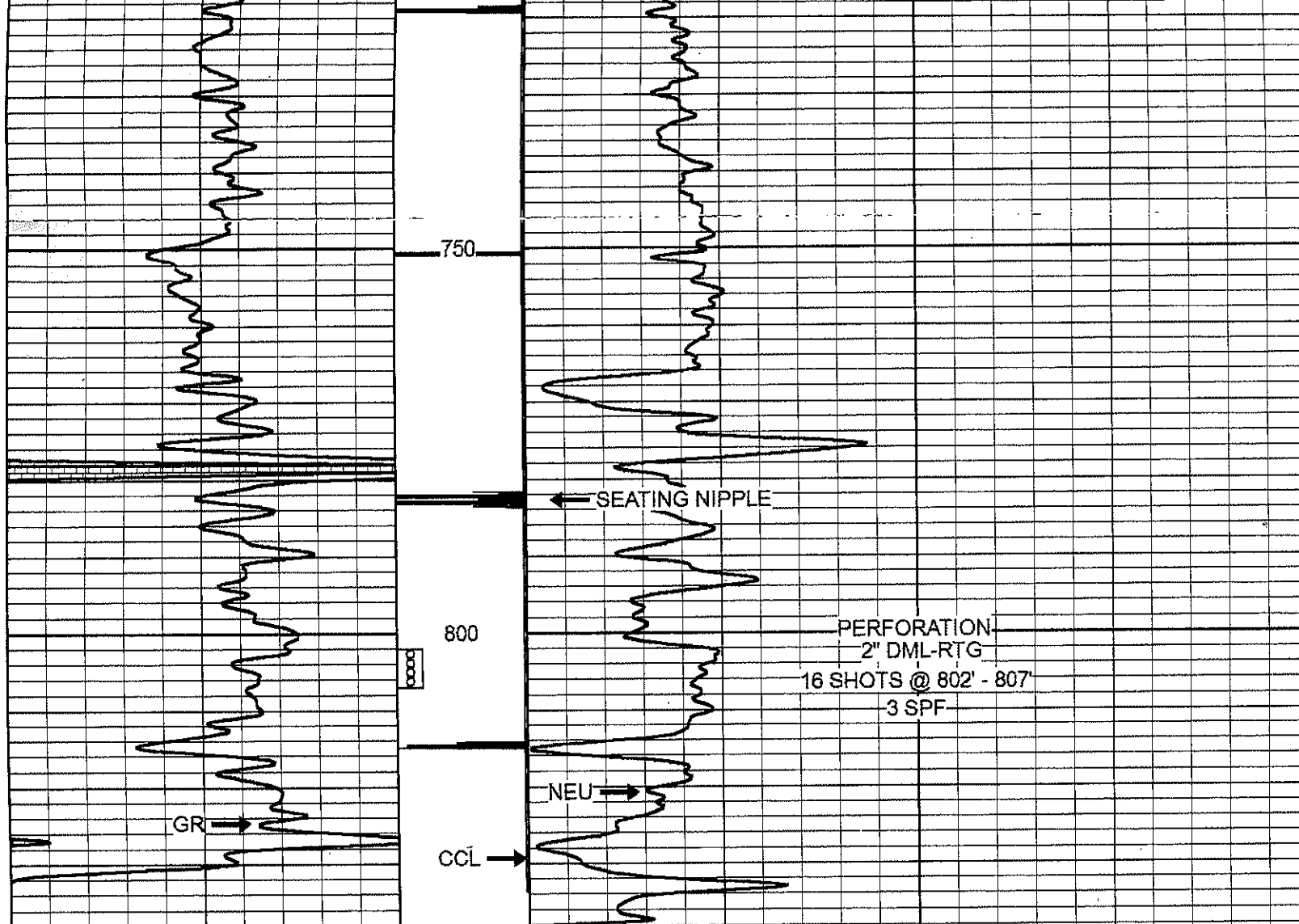
600

650

700

750





150	gr	300	3	CCL0.05	200	NEU (cps)	1700
0	GR	150					



Company	HAAS PETROLEUM, LLC
Well	EAST LIDIKAY #18-HP
Field	PAOLA - RANTOUL
County	FRANKLIN SEC. 4 TWP. 16S RGE. 21E
State	KANSAS
Date	2-11-15