



**TRILOBITE
TESTING, INC**

DRILL STEM TEST REPORT

Samuel Gary Jr

Sec. 35-4s-24w Norton, KS

1515 Wynkoop
STE 700
Denver, CO 80202
ATTN: Chris Mitchell

Steven #1-35

Job Ticket: 60984

DST#: 3

Test Start: 2014.11.25 @ 16:43:00

GENERAL INFORMATION:

Formation: **LKC "B-C"**

Deviated: No Whipstock: ft (KB)

Time Tool Opened: 20:54:23

Time Test Ended: 02:21:32

Test Type: Conventional Bottom Hole (Reset)

Tester: Phillip Gage

Unit No: 77

Interval: 3517.00 ft (KB) To 3567.00 ft (KB) (TVD)

Reference Elevations: 2382.00 ft (KB)

Total Depth: 3567.00 ft (KB) (TVD)

2374.00 ft (CF)

Hole Diameter: 7.88 inches Hole Condition: Fair

KB to GR/CF: 8.00 ft

Serial #: 8898 Outside

Press@RunDepth: 75.05 psig @ 3518.00 ft (KB)

Capacity: 8000.00 psig

Start Date: 2014.11.25 End Date: 2014.11.26

Last Calib.: 2014.11.26

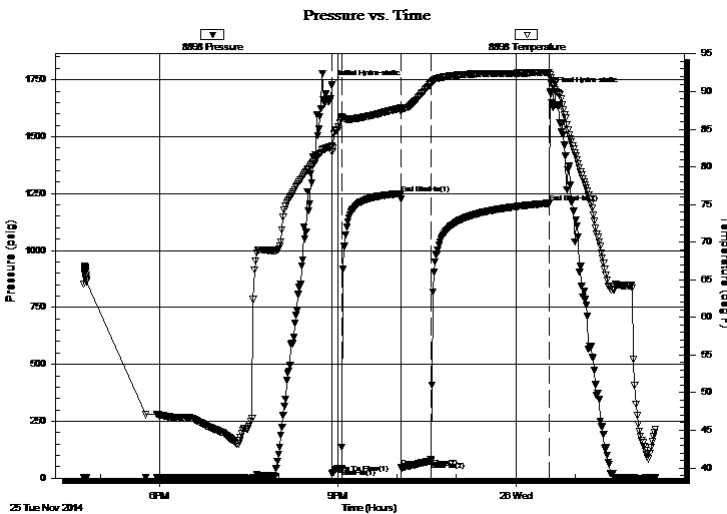
Start Time: 16:43:01 End Time: 02:21:33

Time On Btm: 2014.11.25 @ 20:54:13

Time Off Btm: 2014.11.26 @ 00:35:13

TEST COMMENT: 10-IF-Built to 3 3/4"
60-ISI-Weak Surface Return in 5 mins, died 8 mins later.
30-FF-Built to 8"
120-FSI-No Return

PRESSURE SUMMARY



Time (Min.)	Pressure (psig)	Temp (deg F)	Annotation
0	1728.18	82.74	Initial Hydro-static
1	21.11	82.04	Open To Flow (1)
10	41.07	86.51	Shut-In(1)
70	1250.49	87.80	End Shut-In(1)
70	46.14	87.33	Open To Flow (2)
100	75.05	90.99	Shut-In(2)
220	1208.28	92.55	End Shut-In(2)
222	1699.88	92.18	Final Hydro-static

Recovery

Length (ft)	Description	Volume (bbl)
120.00	VSGMCW, 5%g, 40%m, 55%w	1.40

* Recovery from multiple tests

Gas Rates

Choke (inches)	Pressure (psig)	Gas Rate (Mcf/d)



**TRILOBITE
TESTING, INC**

DRILL STEM TEST REPORT

FLUID SUMMARY

Samuel Gary Jr

Sec. 35-4s-24w Norton, KS

1515 Wynkoop
STE 700
Denver, CO 80202
ATTN: Chris Mitchell

Steven #1-35

Job Ticket: 60984

DST#: 3

Test Start: 2014.11.25 @ 16:43:00

Mud and Cushion Information

Mud Type: Gel Chem

Mud Weight: 9.00 lb/gal

Viscosity: 62.00 sec/qt

Water Loss: 7.60 in³

Resistivity: ohm.m

Salinity: 700.00 ppm

Filter Cake: 2.00 inches

Cushion Type:

Cushion Length: ft

Cushion Volume: bbl

Gas Cushion Type:

Gas Cushion Pressure: psig

Oil API:

Water Salinity: 36000 ppm

deg API

Recovery Information

Recovery Table

Length ft	Description	Volume bbl
120.00	VSGMCW, 5%g, 40%m, 55%w	1.401

Total Length: 120.00 ft Total Volume: 1.401 bbl

Num Fluid Samples: 0

Num Gas Bombs: 0

Serial #:

Laboratory Name:

Laboratory Location:

Recovery Comments: .4 @ 35 degrees = 36,000 Salinity

