



**TRILOBITE TESTING, INC**

# DRILL STEM TEST REPORT

Bereco LLC  
 2020 N. Bramblewood  
 Wichita KS, 67206 1094  
 ATTN: Bryan Bynog

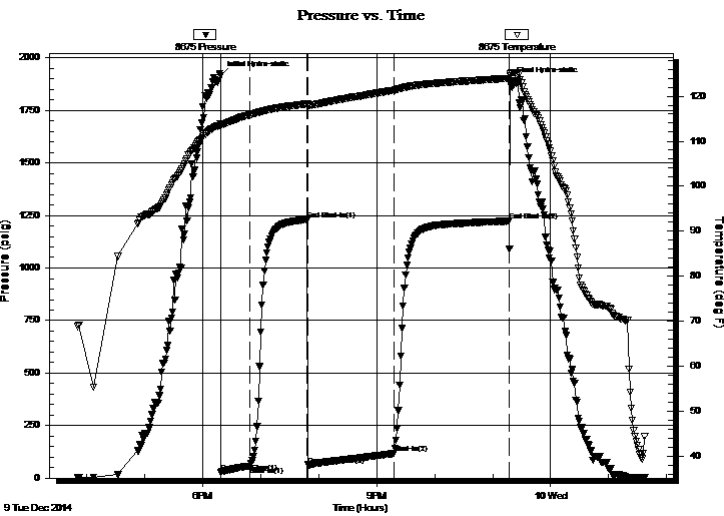
**4-1s-36w Rawlins Co, KS**  
**Moser 5-4**  
 Job Ticket: 58512      **DST#: 2**  
 Test Start: 2014.12.09 @ 15:50:00

## GENERAL INFORMATION:

Formation: **Lansing 'A'**  
 Deviated: No Whipstock: ft (KB)  
 Time Tool Opened: 18:18:15  
 Time Test Ended: 01:37:45  
 Interval: **3935.00 ft (KB) To 4040.00 ft (KB) (TVD)**  
 Total Depth: 4040.00 ft (KB) (TVD)  
 Hole Diameter: 7.88 inches Hole Condition: Poor  
 Test Type: Conventional Bottom Hole (Reset)  
 Tester: Jace McKinney  
 Unit No: 75  
 Reference Elevations: 3066.00 ft (KB)  
 3055.00 ft (CF)  
 KB to GR/CF: 11.00 ft

**Serial #: 8675**      **Inside**  
 Press@RunDepth: 116.93 psig @ 3942.00 ft (KB)      Capacity: 8000.00 psig  
 Start Date: 2014.12.09      End Date: 2014.12.10      Last Calib.: 2014.12.10  
 Start Time: 15:50:15      End Time: 01:37:45      Time On Btm: 2014.12.09 @ 18:18:00  
 Time Off Btm: 2014.12.09 @ 23:18:00

**TEST COMMENT:** Built to 6" blow  
 Bled off for 3 min, No return blow  
 B.O.B. in 46 min  
 Bled off for 5 min, 1/4" return blow through out the 120 min.



## PRESSURE SUMMARY

Time (Min.)	Pressure (psig)	Temp (deg F)	Annotation
0	1915.44	113.78	Initial Hydro-static
1	27.97	113.16	Open To Flow (1)
31	57.58	115.88	Shut-In(1)
90	1231.14	118.28	End Shut-In(1)
91	61.39	117.96	Open To Flow (2)
180	116.93	121.30	Shut-In(2)
299	1223.03	123.94	End Shut-In(2)
300	1885.60	124.58	Final Hydro-static

## Recovery

Length (ft)	Description	Volume (bbl)
0.00	116 Feet Weak Gas In Pipe	0.00
88.00	100% Clean Oil	0.43
116.00	mco 50%M 50%O	0.57

\* Recovery from multiple tests

## Gas Rates

Choke (inches)	Pressure (psig)	Gas Rate (Mcf/d)



**TRILOBITE  
TESTING, INC**

# DRILL STEM TEST REPORT

## FLUID SUMMARY

Bereco LLC  
2020 N. Bramblewood  
Wichita KS, 67206 1094  
ATTN: Bryan Bynog

**4-1s-36w Rawlins Co, KS**  
**Moser 5-4**  
Job Ticket: 58512      **DST#: 2**  
Test Start: 2014.12.09 @ 15:50:00

### Mud and Cushion Information

Mud Type: Gel Chem	Cushion Type:	Oil API: 32 deg API
Mud Weight: 9.00 lb/gal	Cushion Length: ft	Water Salinity: ppm
Viscosity: 64.00 sec/qt	Cushion Volume: bbl	
Water Loss: 7.60 in <sup>3</sup>	Gas Cushion Type:	
Resistivity: ohm.m	Gas Cushion Pressure: psig	
Salinity: 600.00 ppm		
Filter Cake: 2.00 inches		

### Recovery Information

Recovery Table

Length ft	Description	Volume bbl
0.00	116 Feet Weak Gas In Pipe	0.000
88.00	100% Clean Oil	0.433
116.00	mco 50%M 50%O	0.570

Total Length: 204.00 ft      Total Volume: 1.003 bbl  
Num Fluid Samples: 0      Num Gas Bombs: 0      Serial #:  
Laboratory Name:      Laboratory Location:  
Recovery Comments: API: 29 @ 30 = 32

