

3000	few pcs w/ pr intergranular ϕ N.S.
10	ls: as above, w/ ls: grey, micro- vfn xthn, dense; few pcs dk grey dolo sh
20	ls: tan, brown, grey-brown, fr-med foss in part, mottled, no vis ϕ , N.S.
30	ls: as above, w/ ls: brown, detrital, foss, w/ shaley v-fnxthn dolomite cement, no vis ϕ , no show
40	sh: lt. grey, grey, sil silty in part
50	ls: tan, lt. brown, grey, fr-med xthn, sil foss, mottled, no vis ϕ , no show
60	ls: as above, w/ sh: lt. grey, grey, sil silty - sandy
70	sh: lt. grey, grey, sil sandy, few pcs ss: lt. grey, vfn-grained, well-sorted, shaley, no vis ϕ , no show
80	sh & ss as above, w/ grey shaley dolo w/ included ls & foss fragments
90	ls: tan, grey, fr-med xthn granular, sil foss, sil dolomitic, no vis ϕ , N.S.
100	ls: as above, w/ sh: lt. grey, grey, silty, sandy, micaceous
110	sh: as above
120	ls: tan, offwh/lt. grey, fr-med xthn, pelletal, mottled, no vis ϕ , N.S.
130	ls: dk grey, microxthn, dense
140	ls: brown, grey, vfn-med xthn, sil foss, no vis ϕ , no show
150	ls: as above, sil foss, w/ sh laminations in scat pcs, no show
160	ls: offwh, tan, brown, fr-med xthn, sil foss, calcitic in part, ep. scat pcs w/ dr. interxthn ϕ , no show
170	sh: grey, dk grey
180	ls: brown, grey, vfn-xthn, sil foss, dense
190	sh: lt. grey, grey, sil silty, micaceous, few pcs grey, dolomitic, sh w/ foss fragments
200	ls: tan, brown, fr-med xthn, sil foss, some mottled, no vis ϕ , no show
210	ls: offwh, tan, grey, fr-med xthn, sil foss, pelletal, no vis ϕ , N.S.
220	sh: grey, w/ ls frags included, sh/ls: finely laminated, ls: fragments w/ grey & brown, v-fnxthn, dolomite matrix
230	as above, w/ ls: brown, med xthn, sil calcitic, no vis ϕ , no show, sh grey
240	sh: grey, dolomitic in part, ls: lt. grey, greenish-grey (shaley), vfn-fnxthn, scat ls inclusions.
250	ls: tan, grey, brown, vfn-fnxthn, dense
260	ls: as above, w/ few pcs ls: brown, med xthn, granular, no vis ϕ , no show
270	ls: tan, fr-med xthn, no vis ϕ , ls: brown, grey, fr-med xthn, detrital, foss, dolo matrix, no vis ϕ , no show
280	ls: as above, interbedded sh, sil foss frags w/ sh matrix
290	ls: brown, grey, vfn-fnxthn, dense
300	sh: dk grey, few pcs black
310	ls: brown, grey, vfn-xthn, dense

TOPEKA
3111 (-975)

DST # 1
(3240 - 3318)
3D - 60 - 3D - 60
1FP: WR BLOW DIED IN 1"
FP: NO FLOW
RECOVERED:
10' MUD w/ OIL SPKS
HSP: 1560 - 1545
FP: 47-59/59-66
SIP: 419 - 412
BHT: 100 ° F

OREAD
3264 (-1128)

OREAD (-1128)
3264

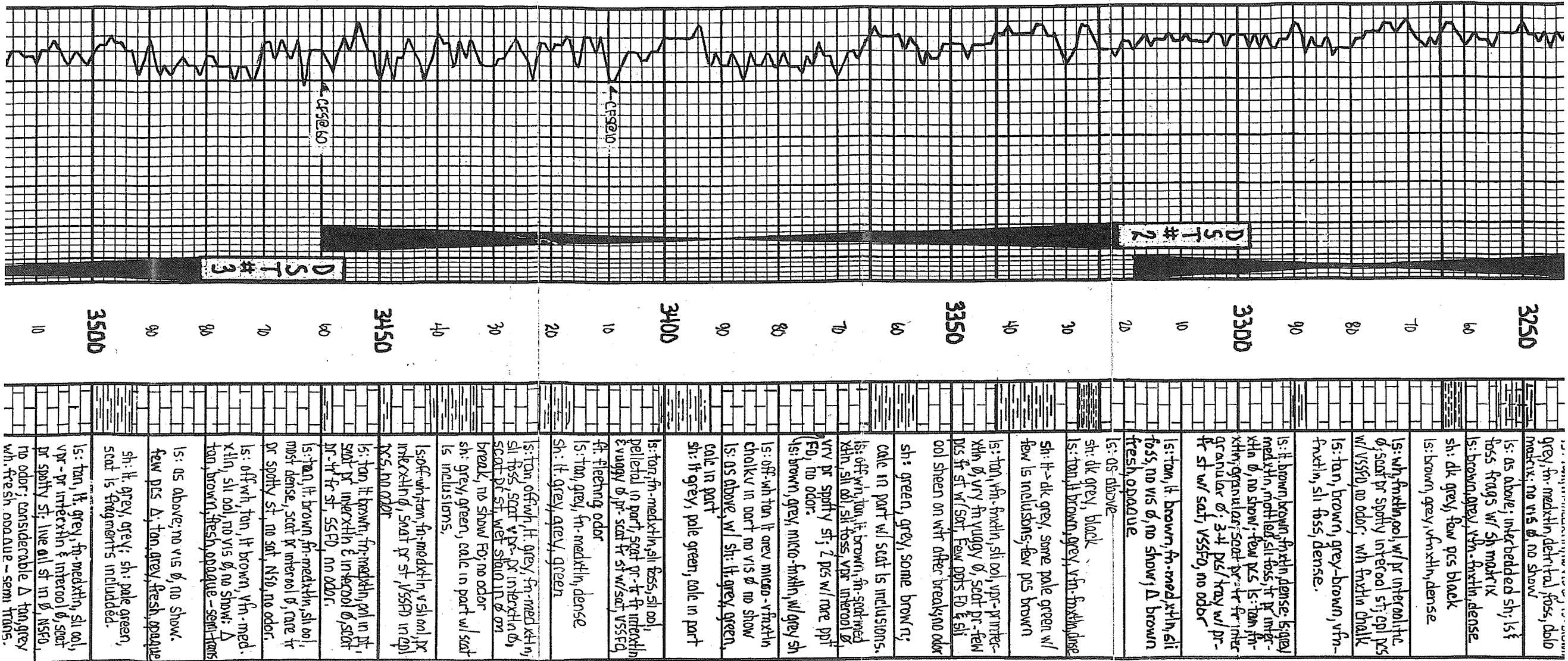
HEEBNER (-1188)
3324

TORONTO (-1206)
3342

LANSING (-1228)
3364

DST#2 (3321-3460)
30-60-60-90
1FP: 1/2" BLW BLDG TO 4"
1SIP: NO BLOW
FFP: NO BLOW
FSIP: NO BLOW
RECOVERED:
30' MUD
HSP: 1702-1614
FP: 88-100/102-106
SIP: 306-288
BHT: 104' F

DST#3 (3481-3594)
30-60-60-90
1FP: 1/2" BLW BLDG TO 2"
1SIP: NO BLOW
FFP: 1/4" BLW BLDG TO 1/2"
RECOVERED:
60' MUD



DST#2

DST#3

30 - 60 - 60 - 41D
 IFP: 1/2" BLDW BLDG TO 2"
 ISIP: ND BLDW
 FFP: 1/4" BLDW BLDG TO 1 1/2"
RECOVERED:
 60' MUD
 HSP: 1759 - 1686
 FP: 65-79/ 79-90
 SIP: 424 - 234
 BHT: 101° F

BKC
 3585 (-1449)

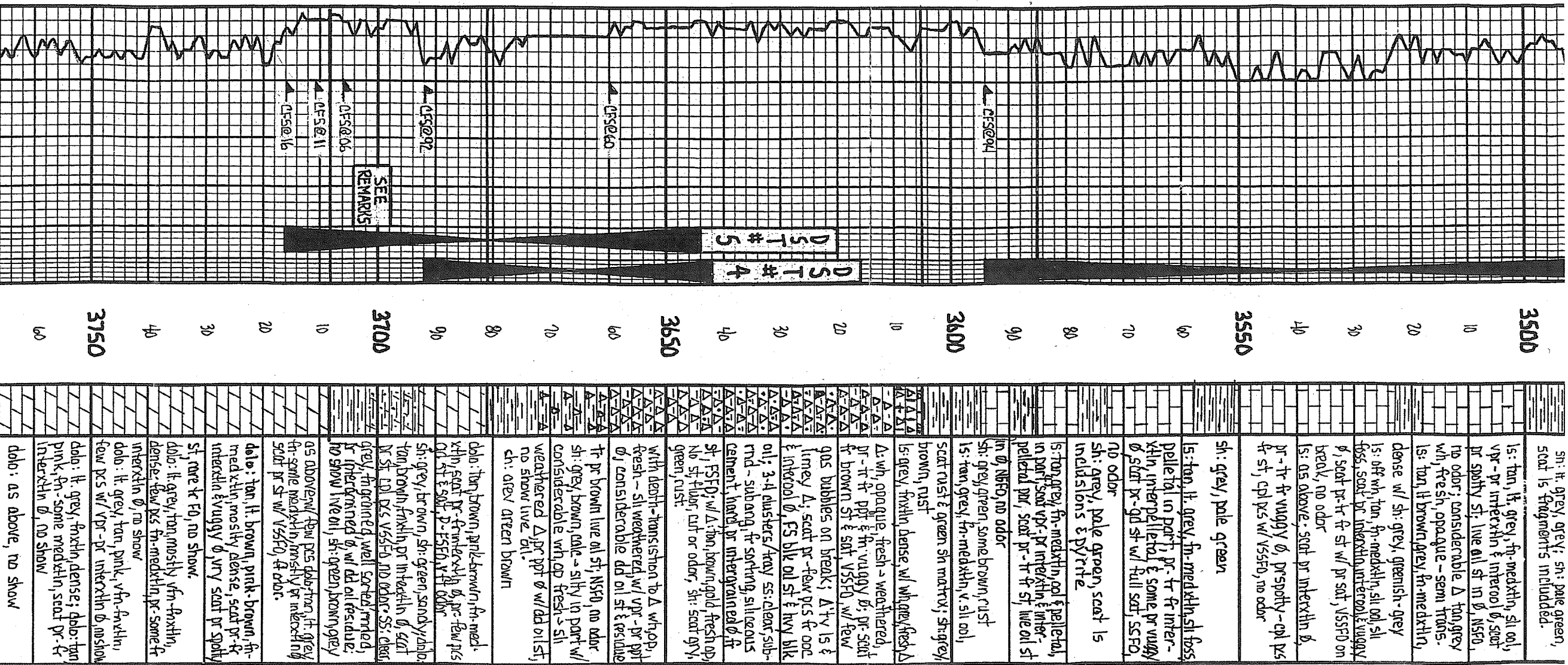
CONGLOMERATE
 3605 (-1569)

DST#4
 (3642-3692)
 3D - 60" - 60" - 90"
 IFP: 1/4" BLDW BLDG TO 3/4"
 FP: 32# 43# / AB# 56#
 SIP: 784# - 777#
 BHT: 108° F

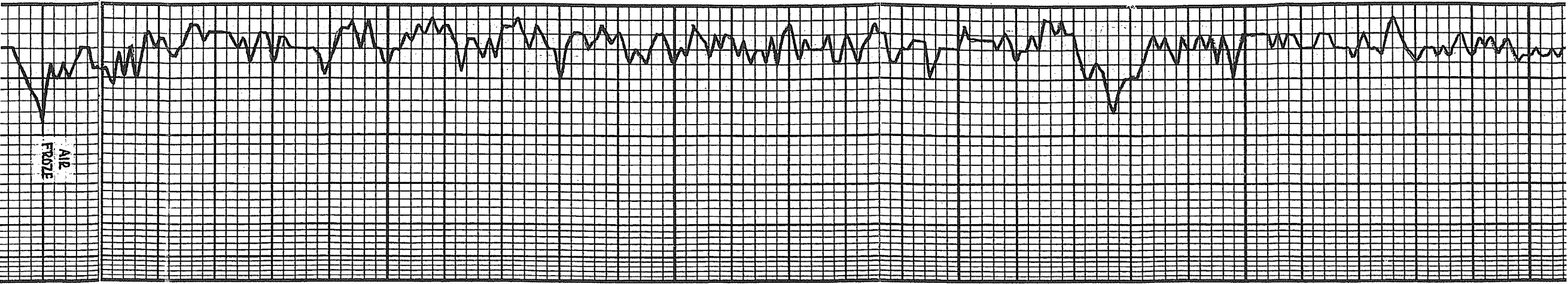
SIMPSON
 36B1 (-1545)
 2092-3716: EXCESS WT,
 BRAKES SLIPPINS REPAIR
 DUBBING DST #5, KELLY
 2' LONG @ 3702'

ARBuckle
 3708 (-1572)

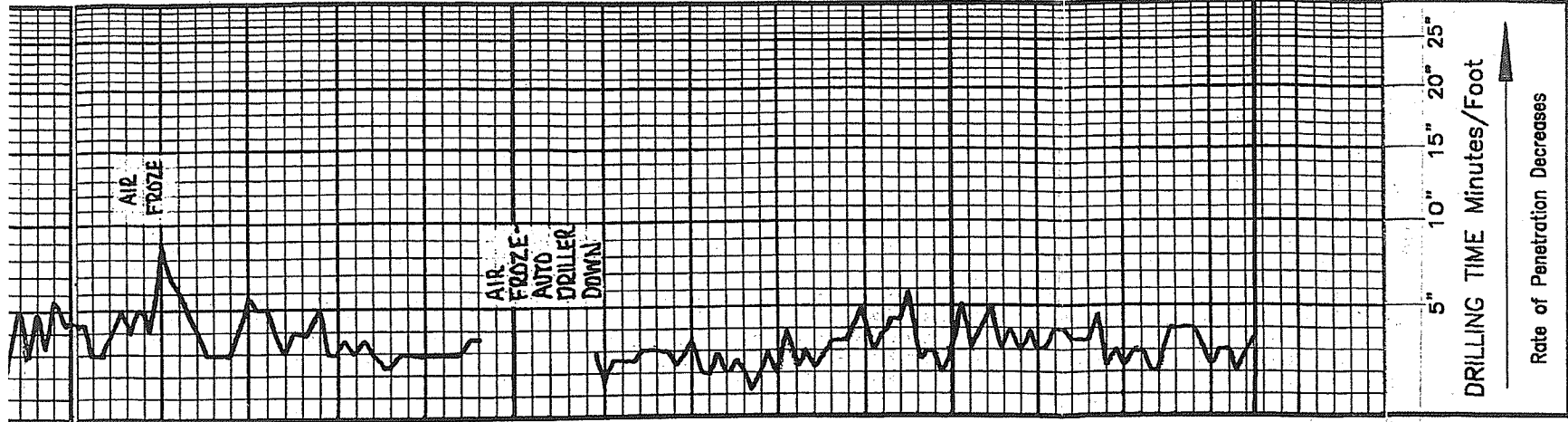
DST#5
 (3644-3716)
 30" - 60" - 8" - 405"
 IFP: 3" BLDW BLDG TO 8"
 ISIP: ND BLDW
 FFP: 608 IMMEDIATELY
 CSIP: ND BLDW
 *PLUGGING DURING IFP
RECOVERED:
 189' MUD
 882' SMCW
 (5%o/n 95%w)



FT: 100 INTERMEDIATE
 ESIP: NO BLDN
 RECOVERED:
 189' MUDD
 882' SMCW
 (5% M 95% W)
 CHL: 3000 PPM S15: 3000 PPM
 HSP: 1796# - 1723#
 FP: S9#-76# / 214#-618#
 S1P: 1152#-1153#
 BHT: 108°F



dolo: lt. grey, tan, pink, vfn-fnxthin, few pcs w/ vpr - pr interxthin & no show
dolo: lt. grey, fnxthin, dense; dolo: tan pink, fn - some medxthin, scat pr - fr interxthin & no show
dolo: as above, no show
dolo: tan, brown, lt. grey, fn-medxthin, most dense, scat pr - fr interxthin & no show
dolo: tan, lt. grey, few pcs pink, fn-medxthin, pr - fr interxthin & vuggy & no show
dolo: tan, grey, brown, vfn - some medxthin, sli ool, most dense; few pcs w/ pr interxthin & no show
dolo: brown, lt. grey, fn-medxthin, pr - fr interxthin & no show; few pcs coarse xthin, w/ qd interxthin & no show
dolo: lt. grey, brown, fn-medxthin, sli ool, pr - fr interxthin & vuggy & no show
dolo: as above; fr - some gd interxthin & no show
dolo: as above, few pcs sli sandy, w/ pink fnxthin dolo, no vis & no show
dolo: tan, grey, brown, fn-medxthin, sli ool, pr - fr interxthin & no show
dolo: tan, grey, vfn-fnxthin, scat pr interxthin & no show
dolo: as above, fine in grey, med-coarse xthin dolo, w/ fr - gd interxthin & dr - fr vuggy & no show
dolo: tan, grey, med-coarse xthin, fr - gd interxthin & vuggy & no show
dolo: tan, grey, med-coarse xthin, fr - some gd interxthin & no show
dolo: tan, grey, med-coarse xthin, fr - some gd interxthin & no show
dolo: as above, scat fr - gd interxthin & no show
dolo: mostly grey, some tan, fn-medxthin, most dense, scat pr interxthin & no show
dolo: grey, fn-medxthin, fn-medxthin? sli glauconitic, pr - fr interxthin & no show
dolo: as above, no show
as above w/ few pcs grey, brown, coarse xthin dolo, w/ fr interxthin & vuggy & no show
dolo: off-wh, lt. grey, tan, fn-medxthin, mostly dense, scat pr interxthin & no show



DEPTH	LITHOLOGY
4000	
10	
20	
30	
40	
4050	
60	
70	
80	
90	
4100	
10	
20	
30	
40	

SAMPLE DESCRIPTIONS	OIL SHOWS
xlin, mostly dense, scat pr interxlin \emptyset , no show	
as above w/ few pks grey, brown, coarse xlin dolo, w/ fr interxlin & vuggy \emptyset . no show	
dolo: off-wh, lt. grey, tan, fr-med xlin, mostly dense, scat pr interxlin \emptyset , no show	
dolo: as above, few pks sil sandy	
dolo: tan, lt grey, fr-med xlin, v sil sandy, scat pr interxlin \emptyset , no show	
dolo: mostly tan, some lt grey, fr-med xlin, pr interxlin \emptyset , no show	
dolo: as above, no show	
dolo: tan, lt grey, fr-med xlin, pr-tr fr interxlin \emptyset , no show	
dolo: tan, lt. grey, fr - some coarse xlin, pr. fr interxlin & vuggy \emptyset , no show	
dolo: as above w/ tan, v fr xlin dense, dolo	
dolo: tan, lt grey, tr pink, v fr - some med xlin, scat pr - fr interxlin, NS	
dolo: tan, grey, fr-med xlin, sil sdy pr-tr fr interxlin \emptyset , no show, few pks bright green sh	
dolo: as above	
dolo: as above, sil line in interxlin \emptyset , no show	
dolo: as above	

REMARKS
LTD 4138 (-2002)
RTD 4135 (-1999)