



## DRILL STEM TEST REPORT

Prepared For: **Charter Energy Inc**

PO Box 252  
Great Bend KS 67530+0252

ATTN: Kurt Talbott

### **Clark #1**

#### **23-17s-14w Barton,KS**

Start Date: 2014.12.16 @ 12:25:00

End Date: 2014.12.16 @ 19:33:30

Job Ticket #: 61896                      DST #: 1

Trilobite Testing, Inc  
1515 Commerce Parkway Hays, KS 67601  
ph: 785-625-4778 fax: 785-625-5620

Printed: 2014.12.23 @ 10:38:26



**TRILOBITE  
TESTING, INC**

# DRILL STEM TEST REPORT

Charter Energy Inc  
 PO Box 252  
 Great Bend KS 67530+0252  
 ATTN: Kurt Talbott

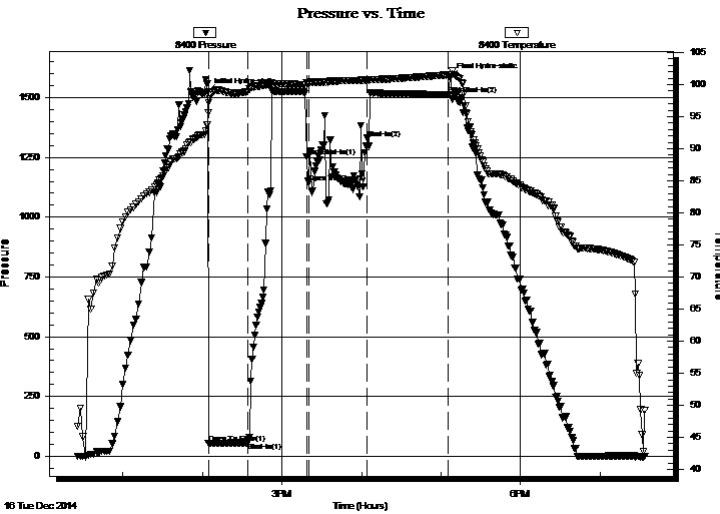
**23-17s-14w Barton,KS**  
**Clark #1**  
 Job Ticket: 61896 **DST#: 1**  
 Test Start: 2014.12.16 @ 12:25:00

## GENERAL INFORMATION:

Formation: **LKC F-G**  
 Deviated: No Whipstock: ft (KB)  
 Time Tool Opened: 14:05:00  
 Time Test Ended: 19:33:30  
 Interval: **3207.00 ft (KB) To 3245.00 ft (KB) (TVD)**  
 Total Depth: 3245.00 ft (KB) (TVD)  
 Hole Diameter: 7.88 inches Hole Condition: Fair  
 Test Type: Conventional Bottom Hole (Initial)  
 Tester: Jared Scheck  
 Unit No: S5  
 Reference Elevations: 1904.00 ft (KB)  
 1897.00 ft (CF)  
 KB to GR/CF: 7.00 ft

**Serial #: 8400 Inside**  
 Press@RunDepth: 1330.25 psig @ 3241.00 ft (KB) Capacity: 5000.00 psig  
 Start Date: 2014.12.16 End Date: 2014.12.16 Last Calib.: 2014.12.16  
 Start Time: 12:26:00 End Time: 19:33:30 Time On Btm: 2014.12.16 @ 14:04:00  
 Time Off Btm: 2014.12.16 @ 17:06:30

**TEST COMMENT:** IFP-30 Minutes-Fair blow built to 10"  
 ISIP-45 Minutes-No blow back  
 FFP- 45 Minutes-BOB in 1 minute  
 FSIP-60 Minutes-No blow back



## PRESSURE SUMMARY

| Time (Min.) | Pressure (psig) | Temp (deg F) | Annotation           |
|-------------|-----------------|--------------|----------------------|
| 0           | 1523.45         | 93.71        | Initial Hydro-static |
| 1           | 53.96           | 97.13        | Open To Flow (1)     |
| 30          | 55.82           | 98.94        | Shut-In(1)           |
| 75          | 1253.50         | 100.21       | End Shut-In(1)       |
| 77          | 1146.49         | 100.32       | Open To Flow (2)     |
| 121         | 1330.25         | 100.72       | Shut-In(2)           |
| 182         | 1513.23         | 101.54       | End Shut-In(2)       |
| 183         | 1584.60         | 101.14       | Final Hydro-static   |

## Recovery

| Length (ft) | Description | Volume (bbl) |
|-------------|-------------|--------------|
| 2160.00     | mud         | 30.30        |
|             |             |              |
|             |             |              |
|             |             |              |
|             |             |              |

## Gas Rates

|  | Choke (inches) | Pressure (psig) | Gas Rate (Mcf/d) |
|--|----------------|-----------------|------------------|
|  |                |                 |                  |





**TRILOBITE  
TESTING, INC**

# DRILL STEM TEST REPORT

**TOOL DIAGRAM**

Charter Energy Inc  
 PO Box 252  
 Great Bend KS 67530+0252  
 ATTN: Kurt Talbott

**23-17s-14w Barton,KS**  
**Clark #1**  
 Job Ticket: 61896      **DST#: 1**  
 Test Start: 2014.12.16 @ 12:25:00

**Tool Information**

|                           |                    |                       |                                |                        |             |
|---------------------------|--------------------|-----------------------|--------------------------------|------------------------|-------------|
| Drill Pipe:               | Length: 3193.00 ft | Diameter: 3.80 inches | Volume: 44.79 bbl              | Tool Weight:           | 1000.00 lb  |
| Heavy Wt. Pipe:           | Length: 0.00 ft    | Diameter: 0.00 inches | Volume: 0.00 bbl               | Weight set on Packer:  | 20000.00 lb |
| Drill Collar:             | Length: 0.00 ft    | Diameter: 0.00 inches | Volume: 0.00 bbl               | Weight to Pull Loose:  | 100000.0 lb |
|                           |                    |                       | <u>Total Volume: 44.79 bbl</u> | Tool Chased            | 4.00 ft     |
| Drill Pipe Above KB:      | 6.00 ft            |                       |                                | String Weight: Initial | 58000.00 lb |
| Depth to Top Packer:      | 3207.00 ft         |                       |                                | Final                  | 68000.00 lb |
| Depth to Bottom Packer:   | ft                 |                       |                                |                        |             |
| Interval between Packers: | 37.00 ft           |                       |                                |                        |             |
| Tool Length:              | 57.00 ft           |                       |                                |                        |             |
| Number of Packers:        | 2                  | Diameter: 6.75 inches |                                |                        |             |

Tool Comments:

| <b>Tool Description</b> | <b>Length (ft)</b> | <b>Serial No.</b> | <b>Position</b> | <b>Depth (ft)</b> | <b>Accum. Lengths</b> |
|-------------------------|--------------------|-------------------|-----------------|-------------------|-----------------------|
|-------------------------|--------------------|-------------------|-----------------|-------------------|-----------------------|

|                |       |      |         |         |                                    |
|----------------|-------|------|---------|---------|------------------------------------|
| Shut In Tool   | 5.00  |      |         | 3192.00 |                                    |
| Hydraulic tool | 5.00  |      |         | 3197.00 |                                    |
| Packer         | 5.00  |      |         | 3202.00 | 20.00      Bottom Of Top Packer    |
| Packer         | 5.00  |      |         | 3207.00 |                                    |
| Anchor         | 33.00 |      |         | 3240.00 |                                    |
| Recorder       | 1.00  | 8400 | Inside  | 3241.00 |                                    |
| Recorder       | 0.00  | 6999 | Outside | 3241.00 |                                    |
| Bullnose       | 3.00  |      |         | 3244.00 | 37.00      Bottom Packers & Anchor |

**Total Tool Length: 57.00**



**TRILOBITE  
TESTING, INC**

# DRILL STEM TEST REPORT

**FLUID SUMMARY**

Charter Energy Inc

**23-17s-14w Barton,KS**

PO Box 252  
Great Bend KS 67530+0252

**Clark #1**

Job Ticket: 61896

**DST#: 1**

ATTN: Kurt Talbott

Test Start: 2014.12.16 @ 12:25:00

## Mud and Cushion Information

Mud Type: Gel Chem

Cushion Type:

Oil API:

deg API

Mud Weight: 9.00 lb/gal

Cushion Length:

ft

Water Salinity:

ppm

Viscosity: 48.00 sec/qt

Cushion Volume:

bbbl

Water Loss: 7.59 in<sup>3</sup>

Gas Cushion Type:

Resistivity: ohm.m

Gas Cushion Pressure:

psig

Salinity: 4300.00 ppm

Filter Cake: 1.00 inches

## Recovery Information

Recovery Table

| Length<br>ft | Description | Volume<br>bbl |
|--------------|-------------|---------------|
| 2160.00      | mud         | 30.299        |

Total Length: 2160.00 ft      Total Volume: 30.299 bbl

Num Fluid Samples: 0

Num Gas Bombs: 0

Serial #:

Laboratory Name:

Laboratory Location:

Recovery Comments:

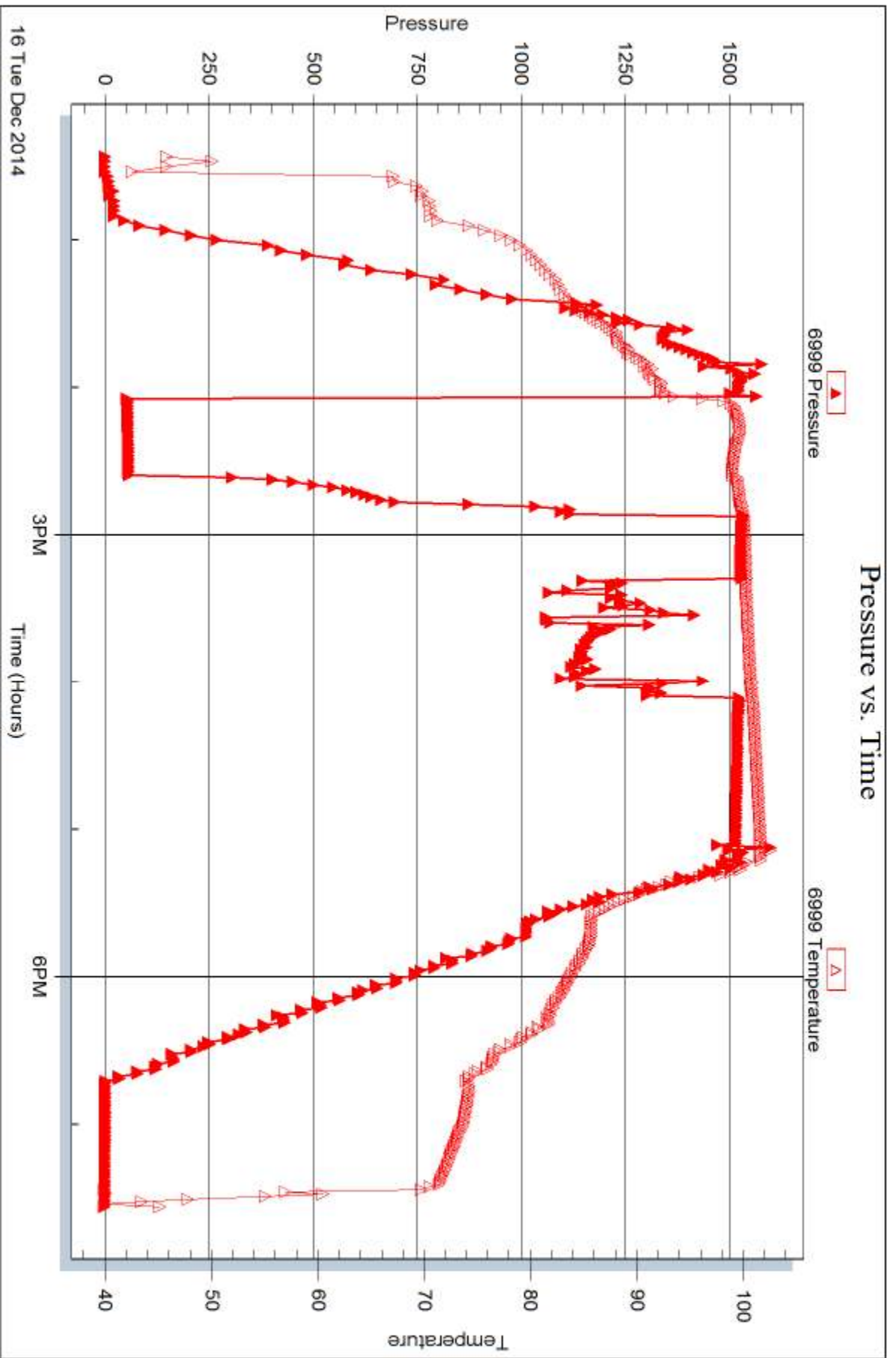


Serial #: 6999

Outside Charter Energy Inc

Clark #1

DST Test Number: 1





## DRILL STEM TEST REPORT

Prepared For: **Charter Energy Inc**

PO Box 252  
Great Bend KS 67530+0252

ATTN: Kurt Talbott

**Clar k#1**

**23-17s-14w Barton,KS**

Start Date: 2014.12.16 @ 16:35:00

End Date: 2014.12.16 @ 22:01:30

Job Ticket #: 61897                      DST #: 2

Trilobite Testing, Inc  
1515 Commerce Parkway Hays, KS 67601  
ph: 785-625-4778 fax: 785-625-5620

Printed: 2014.12.23 @ 10:36:12





**TRILOBITE TESTING, INC**

# DRILL STEM TEST REPORT

Charter Energy Inc  
 PO Box 252  
 Great Bend KS 67530+0252  
 ATTN: Kurt Talbott

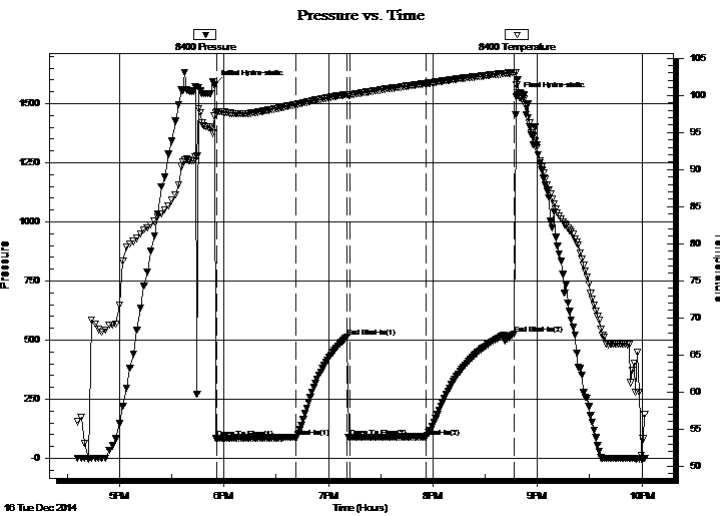
**23-17s-14w Barton,KS**  
**Clar k#1**  
 Job Ticket: 61897 **DST#: 2**  
 Test Start: 2014.12.16 @ 16:35:00

## GENERAL INFORMATION:

Formation: **LKC F-H**  
 Deviated: No Whipstock: ft (KB)  
 Time Tool Opened: 17:56:00  
 Time Test Ended: 22:01:30  
 Interval: **3200.00 ft (KB) To 3305.00 ft (KB) (TVD)**  
 Total Depth: 3305.00 ft (KB) (TVD)  
 Hole Diameter: 7.88 inches Hole Condition: Fair  
 Test Type: Conventional Bottom Hole (Initial)  
 Tester: Jared Scheck  
 Unit No: S5  
 Reference Elevations: 1904.00 ft (KB)  
 1897.00 ft (CF)  
 KB to GR/CF: 7.00 ft

**Serial #: 8400 Inside**  
 Press@RunDepth: 90.02 psig @ 3301.00 ft (KB) Capacity: 5000.00 psig  
 Start Date: 2014.12.16 End Date: 2014.12.16 Last Calib.: 2014.12.16  
 Start Time: 16:36:00 End Time: 22:01:30 Time On Btm: 2014.12.16 @ 17:54:30  
 Time Off Btm: 2014.12.16 @ 20:48:00

TEST COMMENT: IFP-45 Minutes-Weak blow built 2 1/2"  
 ISIP-30 Minutes-No blow back  
 FFP-45 Minutes-Very weak blow built 1/4"  
 FSIP-45 Minutes-No blow back



## PRESSURE SUMMARY

| Time (Min.) | Pressure (psig) | Temp (deg F) | Annotation           |
|-------------|-----------------|--------------|----------------------|
| 0           | 1578.86         | 97.18        | Initial Hydro-static |
| 2           | 84.52           | 97.75        | Open To Flow (1)     |
| 47          | 87.76           | 98.73        | Shut-In(1)           |
| 76          | 512.72          | 100.12       | End Shut-In(1)       |
| 78          | 88.93           | 100.04       | Open To Flow (2)     |
| 122         | 90.02           | 101.58       | Shut-In(2)           |
| 172         | 525.53          | 103.07       | End Shut-In(2)       |
| 174         | 1529.00         | 101.49       | Final Hydro-static   |

## Recovery

| Length (ft) | Description | Volume (bbl) |
|-------------|-------------|--------------|
| 60.00       | mud         | 0.84         |
|             |             |              |
|             |             |              |
|             |             |              |
|             |             |              |

## Gas Rates

| Choke (inches) | Pressure (psig) | Gas Rate (Mcf/d) |
|----------------|-----------------|------------------|
|                |                 |                  |





**TRILOBITE  
TESTING, INC**

# DRILL STEM TEST REPORT

**TOOL DIAGRAM**

Charter Energy Inc  
 PO Box 252  
 Great Bend KS 67530+0252  
 ATTN: Kurt Talbott

**23-17s-14w Barton,KS**  
**Clar k#1**  
 Job Ticket: 61897      **DST#: 2**  
 Test Start: 2014.12.16 @ 16:35:00

**Tool Information**

|                           |                    |                       |                                |                        |             |
|---------------------------|--------------------|-----------------------|--------------------------------|------------------------|-------------|
| Drill Pipe:               | Length: 3212.00 ft | Diameter: 3.80 inches | Volume: 45.06 bbl              | Tool Weight:           | 1000.00 lb  |
| Heavy Wt. Pipe:           | Length: 0.00 ft    | Diameter: 0.00 inches | Volume: 0.00 bbl               | Weight set on Packer:  | 20000.00 lb |
| Drill Collar:             | Length: 0.00 ft    | Diameter: 0.00 inches | Volume: 0.00 bbl               | Weight to Pull Loose:  | 100000.0 lb |
|                           |                    |                       | <u>Total Volume: 45.06 bbl</u> | Tool Chased            | 3.00 ft     |
| Drill Pipe Above KB:      | 32.00 ft           |                       |                                | String Weight: Initial | 60000.00 lb |
| Depth to Top Packer:      | 3200.00 ft         |                       |                                | Final                  | 60000.00 lb |
| Depth to Bottom Packer:   | ft                 |                       |                                |                        |             |
| Interval between Packers: | 105.00 ft          |                       |                                |                        |             |
| Tool Length:              | 125.00 ft          |                       |                                |                        |             |
| Number of Packers:        | 2                  | Diameter:             | 6.75 inches                    |                        |             |

Tool Comments: tool chased 3 feet to bottom had to add another joint

| Tool Description | Length (ft) | Serial No. | Position | Depth (ft) | Accum. Lengths |
|------------------|-------------|------------|----------|------------|----------------|
|------------------|-------------|------------|----------|------------|----------------|

|                 |       |      |         |         |                                     |
|-----------------|-------|------|---------|---------|-------------------------------------|
| Shut In Tool    | 5.00  |      |         | 3185.00 |                                     |
| Hydraulic tool  | 5.00  |      |         | 3190.00 |                                     |
| Packer          | 5.00  |      |         | 3195.00 | 20.00      Bottom Of Top Packer     |
| Packer          | 5.00  |      |         | 3200.00 |                                     |
| Anchor          | 4.00  |      |         | 3204.00 |                                     |
| Change Over Sub | 0.75  |      |         | 3204.75 |                                     |
| Drill Pipe      | 63.50 |      |         | 3268.25 |                                     |
| Change Over Sub | 0.75  |      |         | 3269.00 |                                     |
| Anchor          | 31.00 |      |         | 3300.00 |                                     |
| Recorder        | 1.00  | 8400 | Inside  | 3301.00 |                                     |
| Recorder        | 1.00  | 6999 | Outside | 3302.00 |                                     |
| Bullnose        | 3.00  |      |         | 3305.00 | 105.00      Bottom Packers & Anchor |

**Total Tool Length: 125.00**



**TRILOBITE  
TESTING, INC**

# DRILL STEM TEST REPORT

**FLUID SUMMARY**

Charter Energy Inc

**23-17s-14w Barton,KS**

PO Box 252  
Great Bend KS 67530+0252

**Clar k#1**

Job Ticket: 61897

**DST#: 2**

ATTN: Kurt Talbott

Test Start: 2014.12.16 @ 16:35:00

## Mud and Cushion Information

Mud Type: Gel Chem

Cushion Type:

Oil API:

deg API

Mud Weight: 9.00 lb/gal

Cushion Length:

ft

Water Salinity:

ppm

Viscosity: 53.00 sec/qt

Cushion Volume:

bbbl

Water Loss: 7.19 in<sup>3</sup>

Gas Cushion Type:

Resistivity: ohm.m

Gas Cushion Pressure:

psig

Salinity: 5100.00 ppm

Filter Cake: 1.00 inches

## Recovery Information

Recovery Table

| Length<br>ft | Description | Volume<br>bbl |
|--------------|-------------|---------------|
| 60.00        | mud         | 0.842         |

Total Length: 60.00 ft      Total Volume: 0.842 bbl

Num Fluid Samples: 0

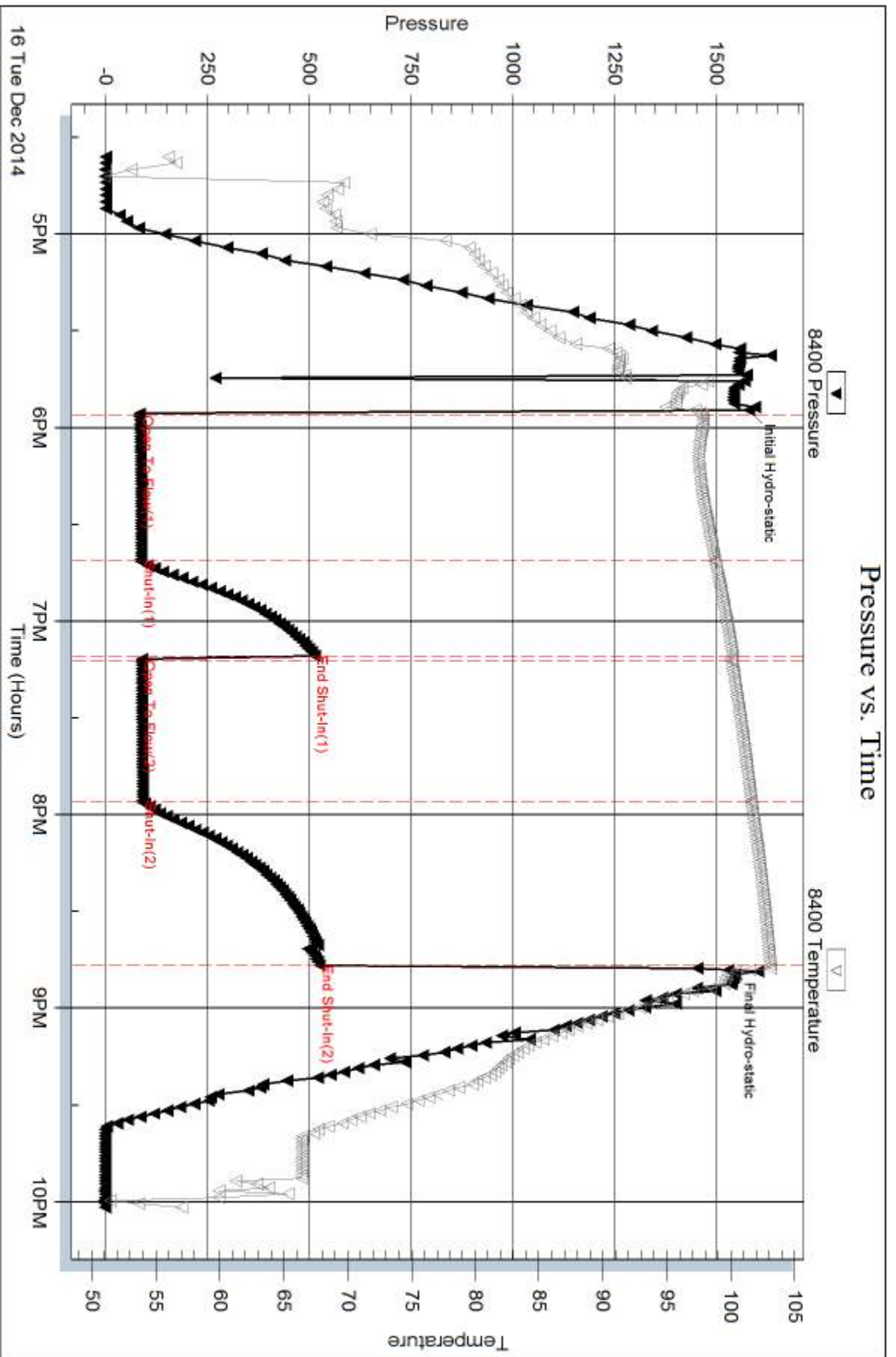
Num Gas Bombs: 0

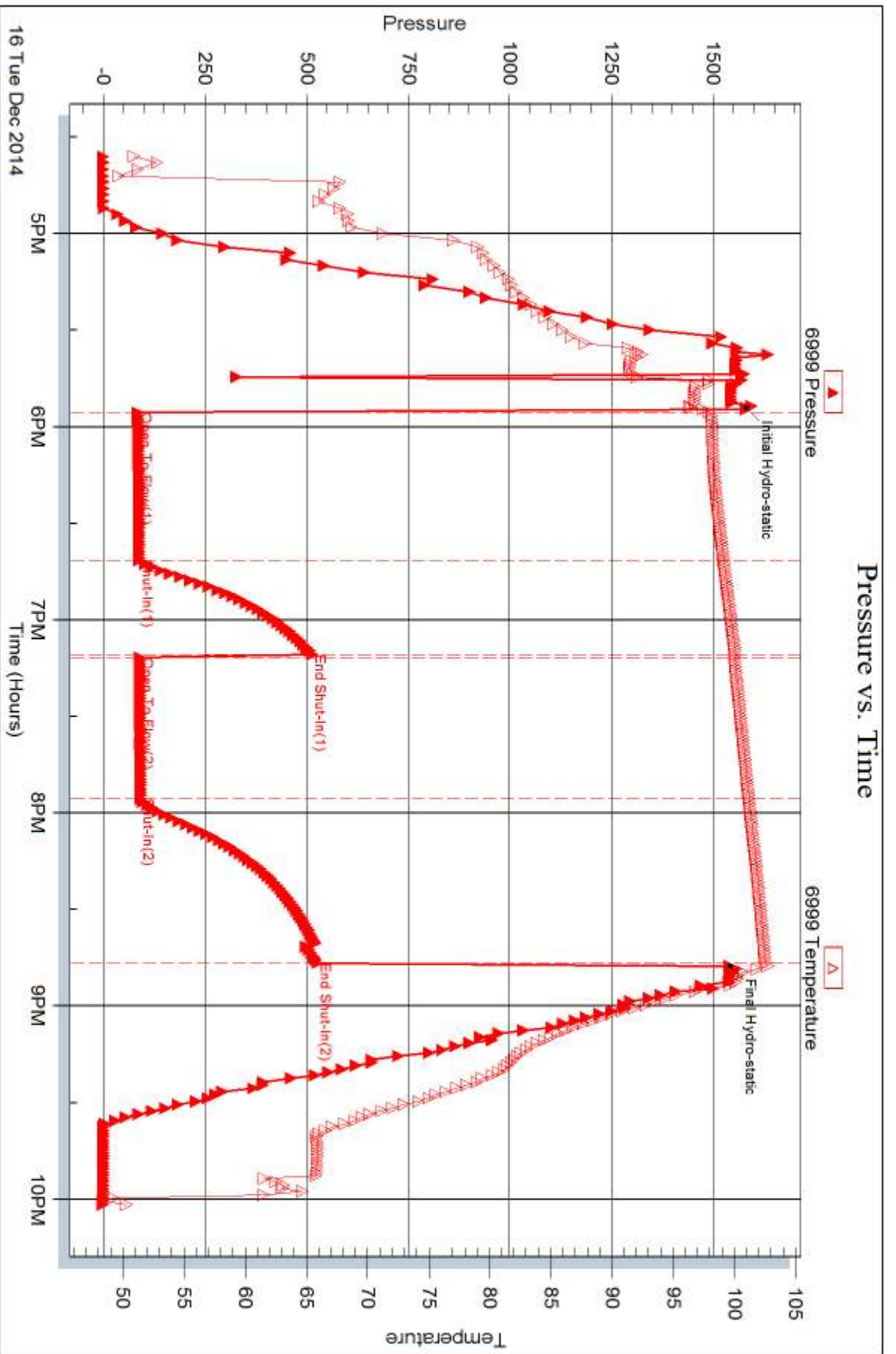
Serial #:

Laboratory Name:

Laboratory Location:

Recovery Comments:







## DRILL STEM TEST REPORT

Prepared For: **Charter Energy Inc**

PO Box 252  
Great Bend KS 67530+0252

ATTN: Kurt Talbott

**Clar k#1**

**23-17s-14w Barton,KS**

Start Date: 2014.12.17 @ 14:00:00

End Date: 2014.12.17 @ 20:13:30

Job Ticket #: 61898                      DST #: 3

Trilobite Testing, Inc  
1515 Commerce Parkway Hays, KS 67601  
ph: 785-625-4778 fax: 785-625-5620

Printed: 2014.12.23 @ 10:29:17



**TRILOBITE  
TESTING, INC**

# DRILL STEM TEST REPORT

Charter Energy Inc  
PO Box 252  
Great Bend KS 67530+0252  
ATTN: Kurt Talbott

**23-17s-14w Barton,KS**

**Clar k#1**

Job Ticket: 61898

**DST#: 3**

Test Start: 2014.12.17 @ 14:00:00

## GENERAL INFORMATION:

Formation: **Arbuckle**  
Deviated: No Whipstock: ft (KB)  
Time Tool Opened: 15:15:00  
Time Test Ended: 20:13:30  
Interval: **3354.00 ft (KB) To 3402.00 ft (KB) (TVD)**  
Total Depth: 3402.00 ft (KB) (TVD)  
Hole Diameter: 7.88 inches Hole Condition: Fair  
Test Type: Conventional Bottom Hole (Initial)  
Tester: Jared Scheck  
Unit No: S5  
Reference Elevations: 1904.00 ft (KB)  
1897.00 ft (CF)  
KB to GR/CF: 7.00 ft

**Serial #: 8400**

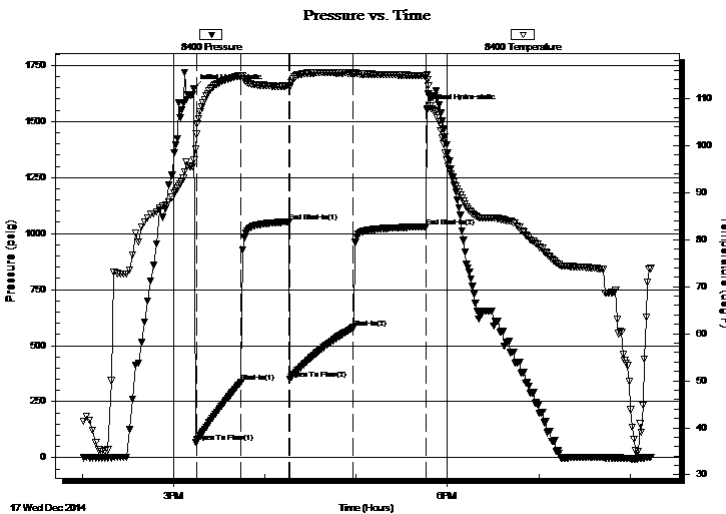
**Inside**

Press@RunDepth: 580.26 psig @ 3398.00 ft (KB)  
Start Date: 2014.12.17 End Date: 2014.12.17  
Start Time: 14:01:00 End Time: 20:13:30

Capacity: 5000.00 psig  
Last Calib.: 2014.12.17  
Time On Btm: 2014.12.17 @ 15:13:30  
Time Off Btm: 2014.12.17 @ 17:47:00

**TEST COMMENT:** IFP-30 Minutes BOB in 3 minutes  
ISIP-30 Minutes-Weak blow back  
FFP-45 Minutes-BOB in 3 minutes  
FSIP- 45 Minutes-No blow back

## PRESSURE SUMMARY



| Time (Min.) | Pressure (psig) | Temp (deg F) | Annotation           |
|-------------|-----------------|--------------|----------------------|
| 0           | 1645.14         | 96.94        | Initial Hydro-static |
| 2           | 67.73           | 102.45       | Open To Flow (1)     |
| 31          | 337.22          | 114.86       | Shut-In(1)           |
| 62          | 1050.14         | 112.68       | End Shut-In(1)       |
| 63          | 351.84          | 112.41       | Open To Flow (2)     |
| 105         | 580.26          | 115.31       | Shut-In(2)           |
| 153         | 1030.45         | 114.81       | End Shut-In(2)       |
| 154         | 1557.99         | 114.06       | Final Hydro-static   |

## Recovery

| Length (ft) | Description       | Volume (bbl) |
|-------------|-------------------|--------------|
| 1500.00     | CGO 10%gas 90%oil | 21.04        |
|             |                   |              |
|             |                   |              |
|             |                   |              |
|             |                   |              |

## Gas Rates

|  | Choke (inches) | Pressure (psig) | Gas Rate (Mcf/d) |
|--|----------------|-----------------|------------------|
|  |                |                 |                  |







**TRILOBITE  
TESTING, INC**

# DRILL STEM TEST REPORT

**TOOL DIAGRAM**

Charter Energy Inc  
 PO Box 252  
 Great Bend KS 67530+0252  
 ATTN: Kurt Talbott

**23-17s-14w Barton,KS**  
**Clar k#1**  
 Job Ticket: 61898      **DST#: 3**  
 Test Start: 2014.12.17 @ 14:00:00

**Tool Information**

|                           |                    |                       |                                |                        |             |
|---------------------------|--------------------|-----------------------|--------------------------------|------------------------|-------------|
| Drill Pipe:               | Length: 3343.00 ft | Diameter: 3.80 inches | Volume: 46.89 bbl              | Tool Weight:           | 1000.00 lb  |
| Heavy Wt. Pipe:           | Length: 0.00 ft    | Diameter: 0.00 inches | Volume: 0.00 bbl               | Weight set on Packer:  | 20000.00 lb |
| Drill Collar:             | Length: 0.00 ft    | Diameter: 0.00 inches | Volume: 0.00 bbl               | Weight to Pull Loose:  | 80000.00 lb |
|                           |                    |                       | <u>Total Volume: 46.89 bbl</u> | Tool Chased            | 3.00 ft     |
| Drill Pipe Above KB:      | 9.00 ft            |                       |                                | String Weight: Initial | 60000.00 lb |
| Depth to Top Packer:      | 3354.00 ft         |                       |                                | Final                  | 67000.00 lb |
| Depth to Bottom Packer:   | ft                 |                       |                                |                        |             |
| Interval between Packers: | 48.00 ft           |                       |                                |                        |             |
| Tool Length:              | 68.00 ft           |                       |                                |                        |             |
| Number of Packers:        | 2                  | Diameter: 6.75 inches |                                |                        |             |

Tool Comments:

| <b>Tool Description</b> | <b>Length (ft)</b> | <b>Serial No.</b> | <b>Position</b> | <b>Depth (ft)</b> | <b>Accum. Lengths</b> |
|-------------------------|--------------------|-------------------|-----------------|-------------------|-----------------------|
|-------------------------|--------------------|-------------------|-----------------|-------------------|-----------------------|

|                |       |      |         |         |                                    |
|----------------|-------|------|---------|---------|------------------------------------|
| Shut In Tool   | 5.00  |      |         | 3339.00 |                                    |
| Hydraulic tool | 5.00  |      |         | 3344.00 |                                    |
| Packer         | 5.00  |      |         | 3349.00 | 20.00      Bottom Of Top Packer    |
| Packer         | 5.00  |      |         | 3354.00 |                                    |
| Anchor         | 43.00 |      |         | 3397.00 |                                    |
| Recorder       | 1.00  | 8400 | Inside  | 3398.00 |                                    |
| Recorder       | 1.00  | 6999 | Outside | 3399.00 |                                    |
| Bullnose       | 3.00  |      |         | 3402.00 | 48.00      Bottom Packers & Anchor |

**Total Tool Length: 68.00**



**TRILOBITE  
TESTING, INC**

# DRILL STEM TEST REPORT

**FLUID SUMMARY**

Charter Energy Inc

**23-17s-14w Barton,KS**

PO Box 252  
Great Bend KS 67530+0252

**Clar k#1**

Job Ticket: 61898

**DST#: 3**

ATTN: Kurt Talbott

Test Start: 2014.12.17 @ 14:00:00

## Mud and Cushion Information

Mud Type: Gel Chem

Cushion Type:

Oil API:

deg API

Mud Weight: 9.00 lb/gal

Cushion Length:

ft

Water Salinity:

ppm

Viscosity: 45.00 sec/qt

Cushion Volume:

bbbl

Water Loss: 8.39 in<sup>3</sup>

Gas Cushion Type:

Resistivity: ohm.m

Gas Cushion Pressure:

psig

Salinity: 6800.00 ppm

Filter Cake: 1.00 inches

## Recovery Information

Recovery Table

| Length<br>ft | Description       | Volume<br>bbl |
|--------------|-------------------|---------------|
| 1500.00      | CGO 10%gas 90%oil | 21.041        |

Total Length: 1500.00 ft      Total Volume: 21.041 bbl

Num Fluid Samples: 0

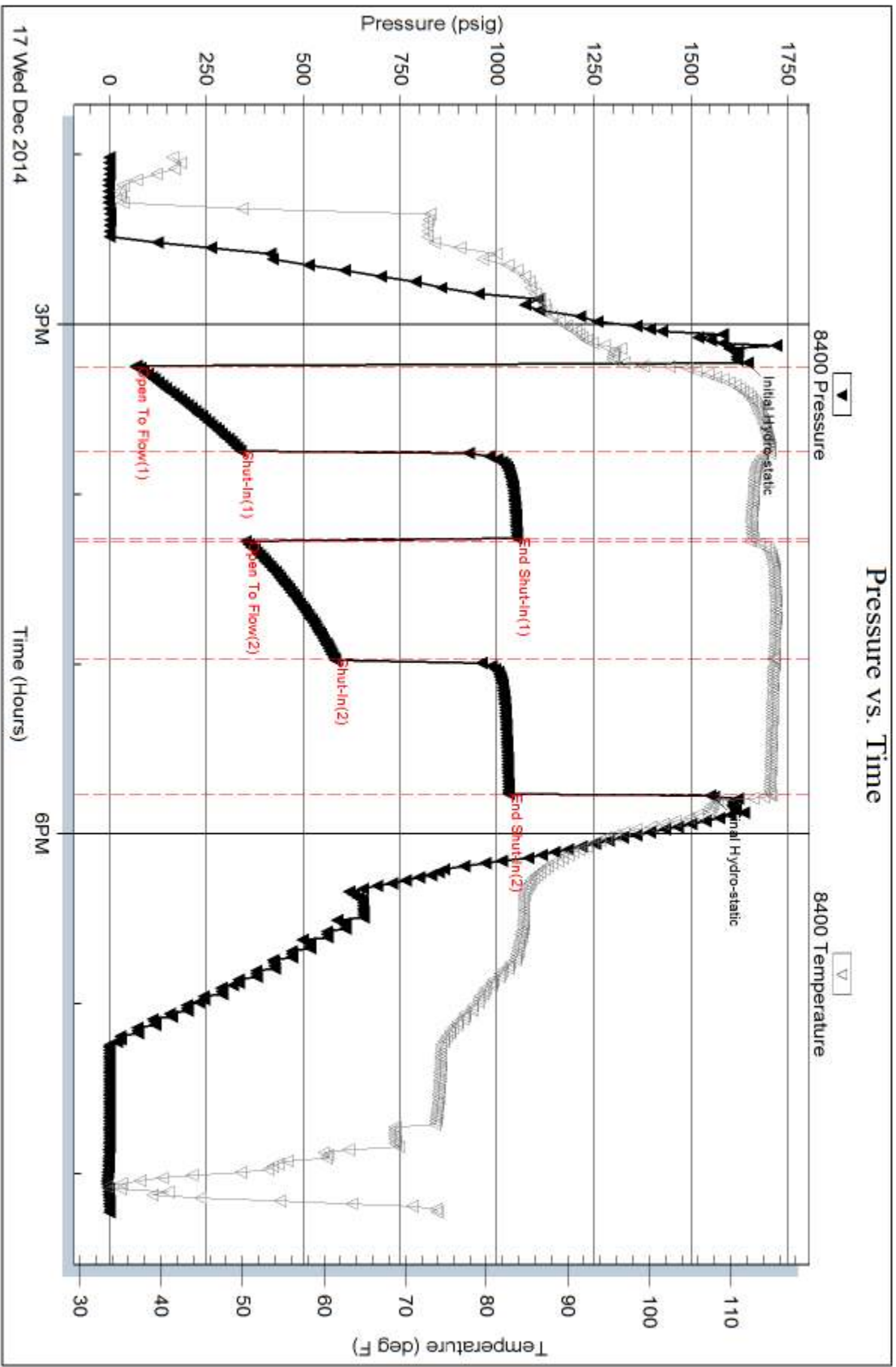
Num Gas Bombs: 0

Serial #:

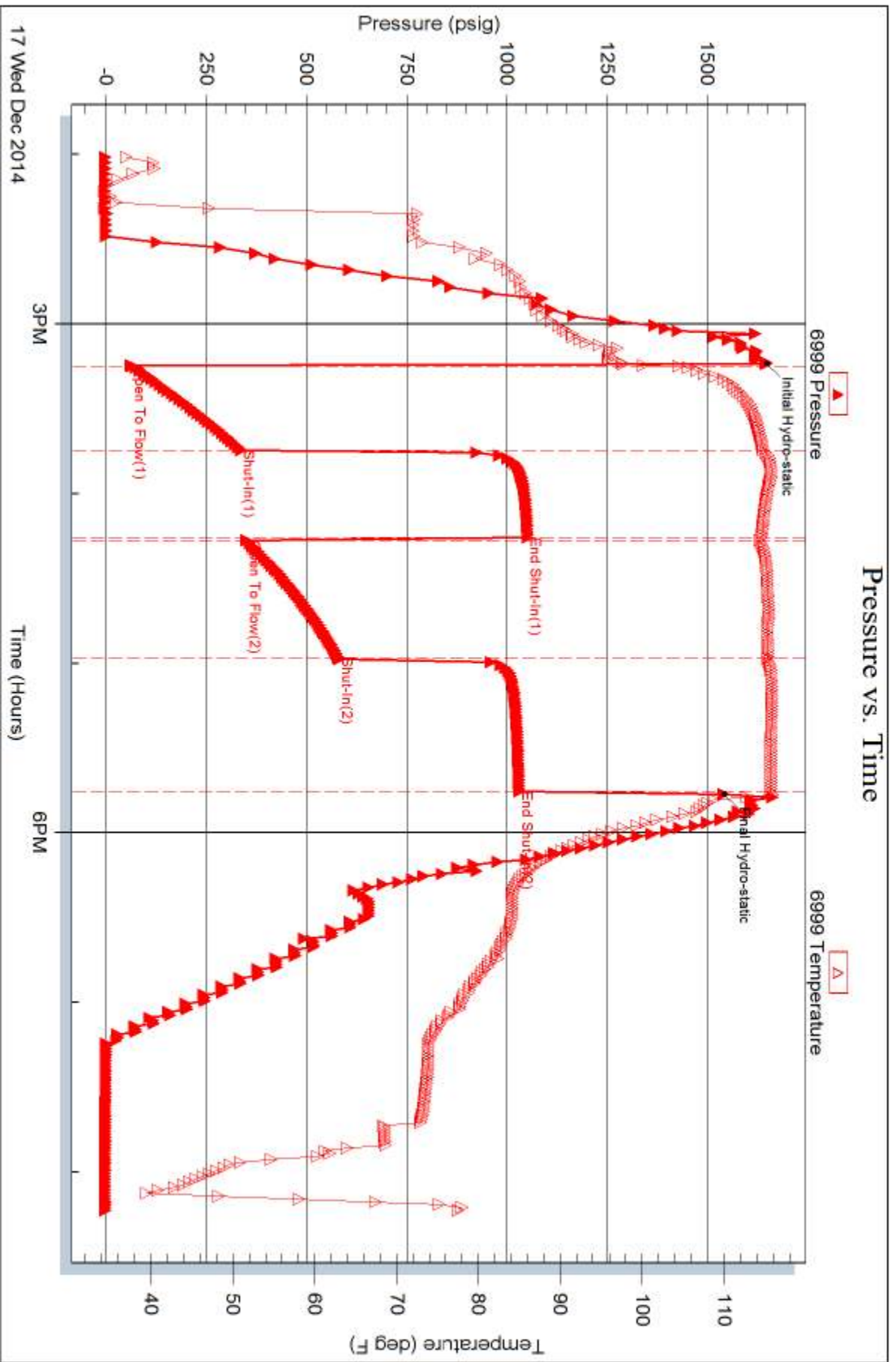
Laboratory Name:

Laboratory Location:

Recovery Comments: Gravity oil 45



# Pressure vs. Time





# TRILOBITE TESTING INC.

1515 Commerce Parkway • Hays, Kansas 67601

## Test Ticket

NO. 61898

Well Name & No. Clark #1 Test No. 3 Date 12-17-2014  
 Company Charter Energy Inc Elevation 1901 KB 1897 GL  
 Address PO Box 252 Great Bend KS 67530 + 0252  
 Co. Rep / Geo. Kurt Rig Royal Drilling Rig #2  
 Location: Sec. 23 Twp. 17s Rge. 14w Co. Barton State KS

Interval Tested 3354-3402 Zone Tested Arbuckle  
 Anchor Length 48 Drill Pipe Run \_\_\_\_\_ Mud Wt. 9.1  
 Top Packer Depth 3349 Drill Collars Run \_\_\_\_\_ Vis 95  
 Bottom Packer Depth 3354 Wt. Pipe Run \_\_\_\_\_ WL 8.4  
 Total Depth 3402 Chlorides 6000 ppm System LCM TV

Blow Description IFP - Strong Blow Built Bottom Bucket in 3 minutes  
ISIP - Weak Blow Back  
FFP - Strong Blow Built Bottom Bucket in 3 minutes  
FSTIP - NO Blow Back

| Rec         | Feet of        | %gas      | %oil      | %water | %mud |
|-------------|----------------|-----------|-----------|--------|------|
| <u>1500</u> | <u>6cs oil</u> | <u>10</u> | <u>90</u> |        |      |
| Rec         | Feet of        | %gas      | %oil      | %water | %mud |
| Rec         | Feet of        | %gas      | %oil      | %water | %mud |
| Rec         | Feet of        | %gas      | %oil      | %water | %mud |
| Rec         | Feet of        | %gas      | %oil      | %water | %mud |

Rec Total \_\_\_\_\_ BHT \_\_\_\_\_ Gravity 45 API RW \_\_\_\_\_ @ \_\_\_\_\_ °F Chlorides \_\_\_\_\_ ppm  
 (A) Initial Hydrostatic 1645  Test 1150 T-On Location 1:45  
 (B) First Initial Flow 67  Jars \_\_\_\_\_ T-Started 2:00  
 (C) First Final Flow 337  Safety Joint \_\_\_\_\_ T-Open 3:18  
 (D) Initial Shut-In 1050  Circ Sub \_\_\_\_\_ T-Pulled 5:48  
 (E) Second Initial Flow 351  Hourly Standby \_\_\_\_\_ T-Out 8:13  
 (F) Second Final Flow 580  Mileage 35 AT Great Bend 54.25 Comments \_\_\_\_\_  
 (G) Final Shut-In 1030  Sampler \_\_\_\_\_  
 (H) Final Hydrostatic 1557  Straddle \_\_\_\_\_  Ruined Shale Packer \_\_\_\_\_

Initial Open 30  Shale Packer \_\_\_\_\_  Ruined Packer \_\_\_\_\_  
 Initial Shut-In 30  Extra Packer \_\_\_\_\_  Extra Copies \_\_\_\_\_  
 Final Flow 45  Extra Recorder \_\_\_\_\_ Sub Total 0  
 Final Shut-In 45  Day Standby \_\_\_\_\_ Total 1204.25  
 Accessibility \_\_\_\_\_ MP/DST Disc't \_\_\_\_\_  
 Sub Total 1204.25

Approved By \_\_\_\_\_ Our Representative \_\_\_\_\_

Trilobite Testing Inc. shall not be liable for damaged of any kind of the property or personnel of the one for whom a test is made, or for any loss suffered or sustained, directly or indirectly, through the use of its equipment, or its statements or opinion concerning the results of any test, tools lost or damaged in the hole shall be paid for at cost by the party for whom the test is made.



# TRILOBITE TESTING INC.

1515 Commerce Parkway • Hays, Kansas 67601

## Test Ticket

NO. 61897

Well Name & No. Clark #1 Test No. 2 Date 12-16-2014  
 Company Charter Energy Inc Elevation 1909 KB 1897 GL  
 Address PO Box 252 Great Bend KS 67530 + 0552  
 Co. Rep / Geo. Kuit Rig Royal Drilling A; #2  
 Location: Sec. 23 Twp. 17s Rge. 14W Co. Barton State KS

Interval Tested 3200-3305 Zone Tested Langsby F.G H  
 Anchor Length 105 Drill Pipe Run \_\_\_\_\_ Mud Wt. 9.2  
 Top Packer Depth 3195 Drill Collars Run \_\_\_\_\_ Vis 53  
 Bottom Packer Depth 3200 Wt. Pipe Run \_\_\_\_\_ WL 7.2  
 Total Depth 3305 Chlorides 5/06 ppm System LCM Ti  
 Blow Description IFP-Weak Blow Built 2 1/2 inches into bucket in  
ISIP-NO Blow Back  
FFP- Very weak Surface Blow Built 1/4 inch into bucket  
FSIP-NO Blow Back

| Rec       | Feet of    | %gas | %oil | %water | %mud |
|-----------|------------|------|------|--------|------|
| <u>60</u> | <u>mud</u> |      |      |        |      |
| _____     | _____      |      |      |        |      |
| _____     | _____      |      |      |        |      |
| _____     | _____      |      |      |        |      |
| _____     | _____      |      |      |        |      |

Rec Total \_\_\_\_\_ BHT \_\_\_\_\_ Gravity \_\_\_\_\_ API RW \_\_\_\_\_ @ \_\_\_\_\_ °F Chlorides \_\_\_\_\_ ppm

(A) Initial Hydrostatic 1578  Test 1150 T-On Location 4:25  
 (B) First Initial Flow 84  Jars \_\_\_\_\_ T-Started 4:35  
 (C) First Final Flow 87  Safety Joint \_\_\_\_\_ T-Open 5:52  
 (D) Initial Shut-In 512  Circ Sub \_\_\_\_\_ T-Pulled 8:37  
 (E) Second Initial Flow 88  Hourly Standby \_\_\_\_\_ T-Out \_\_\_\_\_  
 (F) Second Final Flow 90  Mileage 35 Great Bend 54.25 Comments \_\_\_\_\_  
 (G) Final Shut-In 525  Sampler \_\_\_\_\_  
 (H) Final Hydrostatic 1529  Straddle \_\_\_\_\_  Ruined Shale Packer \_\_\_\_\_  
 Shale Packer \_\_\_\_\_  Ruined Packer 320  
 Extra Packer \_\_\_\_\_  Extra Copies \_\_\_\_\_  
 Initial Open 45  Extra Recorder \_\_\_\_\_ Sub Total 320  
 Initial Shut-In 30  Day Standby \_\_\_\_\_ Total 1524.25  
 Final Flow 45  Accessibility \_\_\_\_\_ MP/DST Disc't \_\_\_\_\_  
 Final Shut-In 45  Sub Total 1204.25

Approved By \_\_\_\_\_ Our Representative [Signature]

Trilobite Testing Inc. shall not be liable for damaged of any kind of the property or personnel of the one for whom a test is made, or for any loss suffered or sustained, directly or indirectly, through the use of its equipment, or its statements or opinion concerning the results of any test, tools lost or damaged in the hole shall be paid for at cost by the party for whom the test is made.



# TRILOBITE TESTING INC.

1515 Commerce Parkway • Hays, Kansas 67601

## Test Ticket

NO. 61896

Well Name & No. Clark #1 Test No. 1 Date 12-16-2014  
 Company Charter Energy Inc Elevation 1904 KB 1897 GL  
 Address PO Box 252 Great Bend KS 67530 + 0252  
 Co. Rep / Geo. Kurt Rig Royal Drilling Rig #2  
 Location: Sec. B3 Twp. 17S Rge. 14W Co. Barton State KS

Interval Tested 3207 - 3245 Zone Tested Lansing F+G  
 Anchor Length 38 Drill Pipe Run 3.8 Mud Wt. 8.9  
 Top Packer Depth 3202 Drill Collars Run 2 Vis 4.8  
 Bottom Packer Depth 3207 Wt. Pipe Run > WL 7.6  
 Total Depth 3245 Chlorides 4,300 ppm System LCM

Blow Description IFP - Fair Blow Built 10 inches into Bucket in 30 minutes Tool chased 4 feet  
ISIP - No Blow Back  
FFP - Strong Blow Built Bottom of Bucket in 1 minute  
FSTP - No Blow Back

| Rec         | Feet of            | %gas | %oil | %water | %mud |
|-------------|--------------------|------|------|--------|------|
| <u>2160</u> | <u>Feet of Mud</u> |      |      |        |      |
| Rec         | Feet of            | %gas | %oil | %water | %mud |
| Rec         | Feet of            | %gas | %oil | %water | %mud |
| Rec         | Feet of            | %gas | %oil | %water | %mud |
| Rec         | Feet of            | %gas | %oil | %water | %mud |

Rec Total \_\_\_\_\_ BHT \_\_\_\_\_ Gravity \_\_\_\_\_ API RW \_\_\_\_\_ @ \_\_\_\_\_ °F Chlorides \_\_\_\_\_ ppm

(A) Initial Hydrostatic 1523  Test 950 T-On Location 10:45 pm  
 (B) First Initial Flow 53  Jars \_\_\_\_\_ T-Started 12:25 am  
 (C) First Final Flow 55  Safety Joint \_\_\_\_\_ T-Open 2:02 am  
 (D) Initial Shut-In 1253  Circ Sub \_\_\_\_\_ T-Pulled 5:02 am  
 (E) Second Initial Flow 1146  Hourly Standby \_\_\_\_\_ T-Out 9:35  
 (F) Second Final Flow 1330  Mileage 35 miles RT Great Bend Comments Tool chased 4 feet to bottom  
 (G) Final Shut-In 1513  Sampler 54.25  
 (H) Final Hydrostatic 584  Straddle \_\_\_\_\_  
 Shale Packer \_\_\_\_\_  
 Extra Packer \_\_\_\_\_  
 Extra Recorder \_\_\_\_\_  
 Day Standby \_\_\_\_\_  
 Accessibility \_\_\_\_\_

Initial Open 30  
 Initial Shut-In 45  
 Final Flow 7.5  
 Final Shut-In 60

Sub Total 1004.25

Approved By \_\_\_\_\_ Our Representative [Signature]  
 TriLOBITE TESTING INC. shall not be liable for damaged of any kind of the property or personnel of the one for whom a test is made, or for any loss suffered or sustained, directly or indirectly, through the use of its equipment, or its statements or opinion concerning the results of any test, tools lost or damaged in the hole shall be paid for at cost by the party for whom the test is made.