



TRILOBITE TESTING, INC.

DRILL STEM TEST REPORT

McElvain Energy Inc
 1050 17th St
 STE 2500
 Denver Co 80265-2080
 ATTN: Jim McKinney, Rodney

3-12s-21w Trego
Spalsbury 3-2#1
 Job Ticket: 61134 **DST#: 1**
 Test Start: 2014.12.14 @ 06:00:56

GENERAL INFORMATION:

Formation: **Topeka**
 Deviated: No Whipstock: ft (KB)
 Time Tool Opened: 08:25:51
 Time Test Ended: 12:41:50
 Interval: **3370.00 ft (KB) To 3396.00 ft (KB) (TVD)**
 Total Depth: 3396.00 ft (KB) (TVD)
 Hole Diameter: 7.85 inches Hole Condition: Fair
 Test Type: Conventional Bottom Hole (Initial)
 Tester: Ray Schwager
 Unit No: 70
 Reference Elevations: 2315.00 ft (KB)
 2305.00 ft (CF)
 KB to GR/CF: 10.00 ft

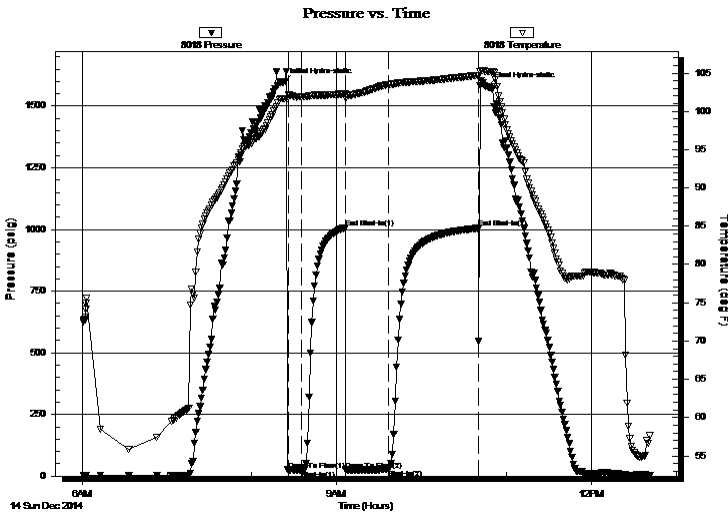
Serial #: 8018

Inside

Press @ Run Depth: 25.98 psig @ 3371.00 ft (KB) Capacity: 8000.00 psig
 Start Date: 2014.12.14 End Date: 2014.12.14 Last Calib.: 2014.12.14
 Start Time: 06:00:56 End Time: 12:41:50 Time On Btm: 2014.12.14 @ 08:22:21
 Time Off Btm: 2014.12.14 @ 10:46:20

TEST COMMENT: 10-IFP-w k bl thru-out 1/2" to 1" bl
 30-ISIP-no bl
 60-FFP-surface bl, died in 10 min
 120-FSIP-no bl

PRESSURE SUMMARY



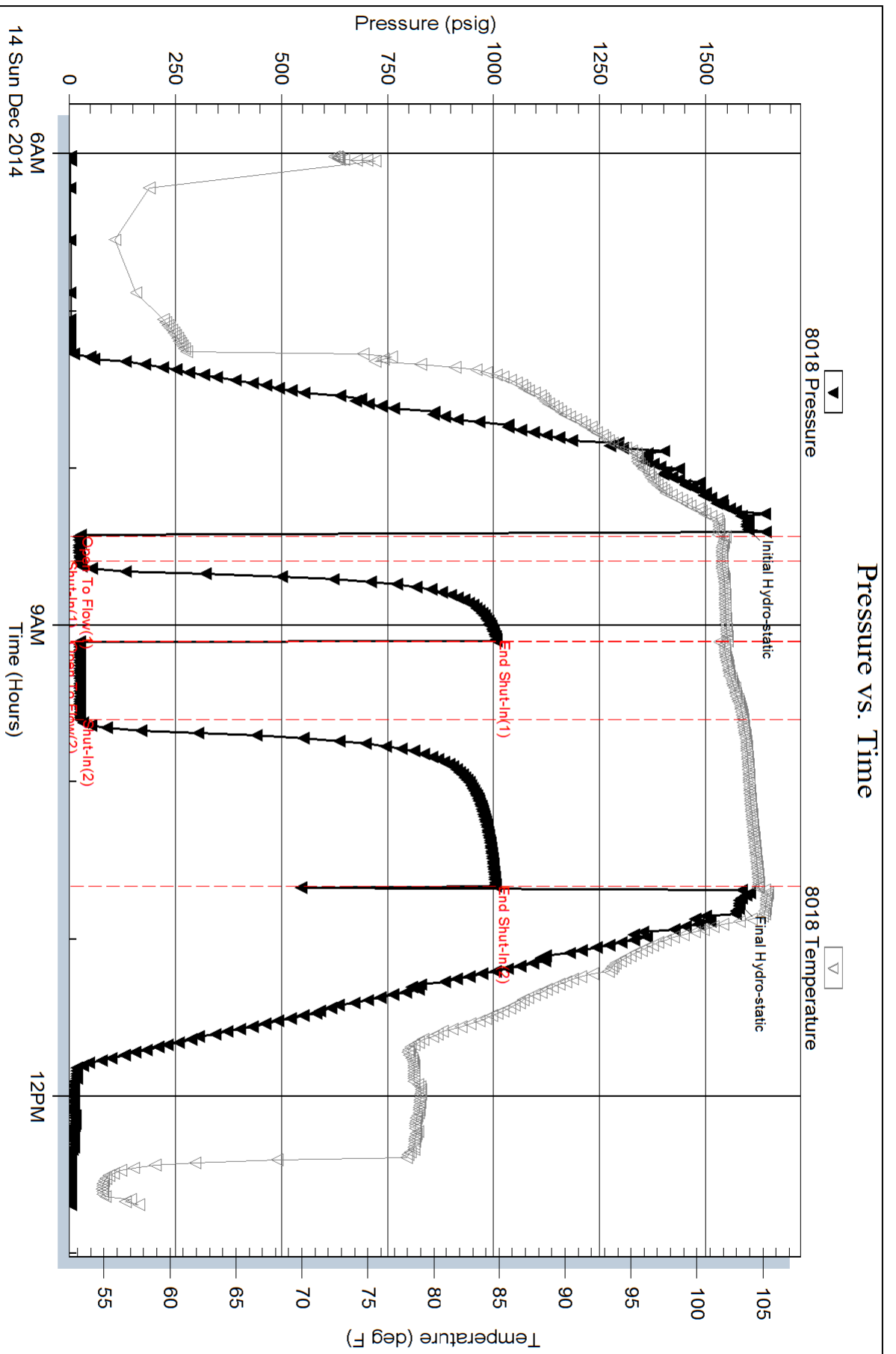
Time (Min.)	Pressure (psig)	Temp (deg F)	Annotation
0	1595.67	101.69	Initial Hydro-static
4	23.93	102.16	Open To Flow (1)
13	25.08	101.91	Shut-In(1)
44	1007.54	102.31	End Shut-In(1)
44	25.67	101.71	Open To Flow (2)
74	25.98	103.49	Shut-In(2)
138	1005.10	104.70	End Shut-In(2)
144	1578.14	105.22	Final Hydro-static

Recovery

Length (ft)	Description	Volume (bbl)
10.00	Mud	0.14

Gas Rates

Choke (inches)	Pressure (psig)	Gas Rate (Mcf/d)



Serial #: 8700

Outside McElvain Energy Inc

Spalsbury 3-2#1

DST Test Number: 1

