

# KITT NOAH

PETROLEUM GEOLOGIST  
Kansas License #229



## GEOLOGIST'S REPORT

DRILLING TIME AND SAMPLE LOG

LOG

ELEVATION: KB 3057

GL: 3046

MEASURED FROM: KB

#15-109-21.373

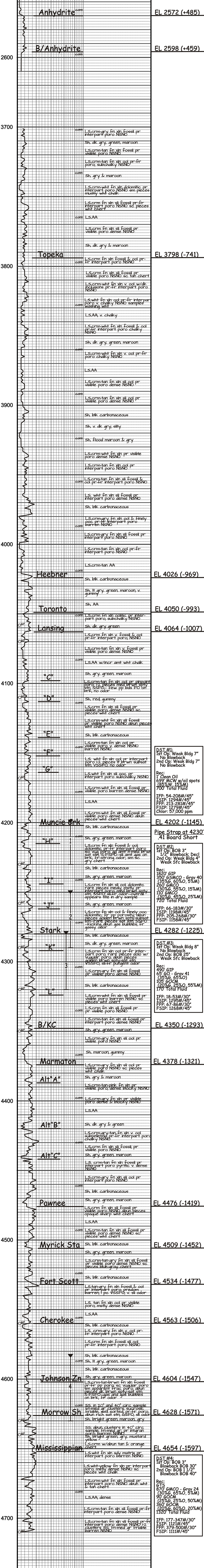
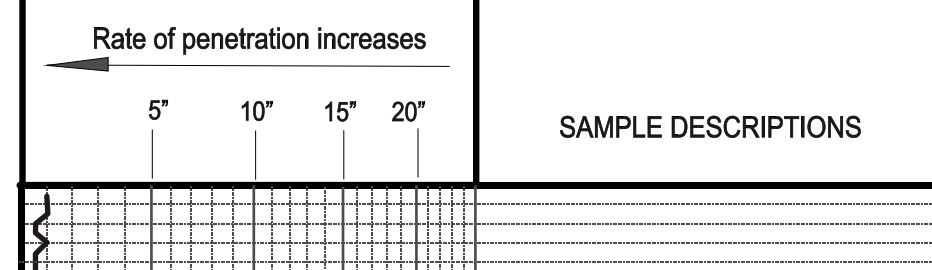
OPERATOR:	Russell Oil, Inc.
LEASE:	Rumback "B"
WELL NO.:	#21-1
LOCATION:	1190'FN & 2065'FE
SEC:	21
TWP:	11S
RNG:	32W
COUNTY:	Logan
STATE:	Kansas
DV/TITLE:	2590' w/3500' SX

FORMATION:	LOG	TOP	DATUM
Anhydrite	2572 (-488)		
B/Anhydrite	2598 (-459)		
Heebner	4026 (-969)		
Toronto	4030 (-993)		
Lansing	4064 (-1007)		
Stark	4282 (-1225)		
B/KC	4350 (-1293)		
Marmaton	4378 (-1321)		
Pawnee	4476 (-1419)		
Cherokee	4563 (-1506)		
Mississippian	4654 (-1597)		
R/D	4710 (-1653)		
LTD	4710 (-1653)		

CONTRACTOR:	H2 Drilling Rig #1
COMM:	12-5-2014
COINP.:	12-15-2014
RTD:	4710
LTD:	4710
SAMPLES SAVED FROM:	3700 to TD
DRILLING TIME SAVED FROM:	3700 to TD
SAMPLES EXAMINED FROM:	3700 to TD
GEOLOGICAL SUPERVISION FROM:	3820 to TD
MUD P:	3500
MUD TYPE:	GENERAL
MUDLOG - REID ATKINS:	
DRILL STEWARTS TAKEN:	4
DRILL TESTS TAKEN:	4

SURVEYS:	Pioneer Energy Services
Dual Compensated Porosity	
Dual Induction	
Microlog	
Borehole Compensated Sonic	

## LEGEND



DST #1:  
1st Op: Weak Bldg 7"  
No Blowback  
2nd Op: Weak Bldg 7"  
No Blowback

Rec:  
1 Clean Oil  
699 MCW w/oil spots  
(85% w/ 15% AA)  
700 Total Fluid

IFF: 54-208#/45"  
ISIP: 1294#/45"  
FFIP: 213-281#/45"  
FSIP: 1279#/45"  
Chlor: 57,000 ppm

DST #2:  
1st Op: BOB 3"  
1/2" Blowback: Decl  
2nd Op: Weak Bldg 4"  
Weak Sfc Blowback

Rec:  
1820' GIP  
350' GMCO - Grav 40  
(35%G, 60%O, 5%M)  
260' GMCO  
(30%G, 55%O, 15%M)  
110' GMCO  
(30%G, 45%O, 25%M)  
720' Total Fluid

IFF: 66-183#/30"  
ISIP: 1198#/45"  
FFIP: 205-268#/30"  
FSIP: 1158#/45"

DST #3:  
1st Op: Weak Bldg 8"  
No Blowback  
2nd Op: BOB 25"  
Weak Sfc Blowback

Rec:  
490' GIP  
65' GMCO - Grav 41  
(35%G, 65%O)  
105' GOCM  
(20%G, 25%O, 55%M)  
170' Total Fluid

IFF: 18-53#/30"  
ISIP: 1295#/45"  
FFIP: 67-86#/30"  
FSIP: 1268#/45"

DST #4:  
1st Op: BOB 3"  
Blowback BOB 30"  
2nd Op: BOB 1 1/2"  
Blowback BOB 40"

Rec:  
GTS  
870' GMCO - Grav 24  
(30%G, 65%O, 5%M)  
90' GOCM  
(25%G, 25%O, 50%M)  
360' GOCM  
(20%G, 60%O, 20%M)  
1320' Total Fluid

IFF: 177-347#/30"  
ISIP: 1121#/45"  
FFIP: 379-500#/30"  
FSIP: 1111#/45"

ELEVATION: KB 3057

OPERATOR:	Russell Oil, Inc.	LOCATION:	1190'FN & 2065'FE
LEASE:	Rumback "B"	WELL NO.:	#21-1
API:	15-109-21.373	FIELD:	Wildcat
SEC:	21	TWP:	11S
RNG:	32W	COUNTY:	Logan
STATE:	Kansas		

