

Geologic Report

Drilling Time and Sample Log

Operator American Warrior, Inc.		KB Elevation 2123'
Lease Schniepp-Anslover Unit No. 1		DF 2115'
API # 15-135-25834-0000		GL 8 5/8" @ 1362'
Field Bazine		Production None
Location 100' FNL & 730' FWL		Electrical Surveys CNL/CDL, DIL
Sec. 33	Twp. 18s	Rge. 21w
County Ness	State Kansas	

Formation	Log Tops	Sample Tops	Struct Comp
Anhydrite	1353' +770	1347' +776	+1
Base	1382' +741	1383' +740	
Heebner	3578' -1455	3580' -1457	+9
Lansing	3624' -1501	3626' -1503	+7
BKc	3954' -1831	3948' -1825	
Pawnee	4026' -1903	4028' -1905	
Fort Scott	4100' -1977	4101' -1978	+11
Cherokee	4118' -1995	4119' -1996	
Mississippian	4192' -2069	4189' -2066	+25
Osage	4208' -2085	4210' -2087	+18
Total Depth	4230' -2107	4230' -2107	

Reference Well For Structural Comparison Oil Producers Inc of KS Anslover #1
585' FSL & 4290' FEL Sec. 28 T18s R21w Ness Co. Kansas

Drilling Contractor	Discovery Drilling, Inc.	Rig #3
Commenced	11-18-2014	Completed 11-26-2014
Samples Saved From	3850'	To RTD
Drilling Time Kept From	3500'	To RTD
Samples Examined From	3850'	To RTD
Geological Supervision From	3850'	To RTD

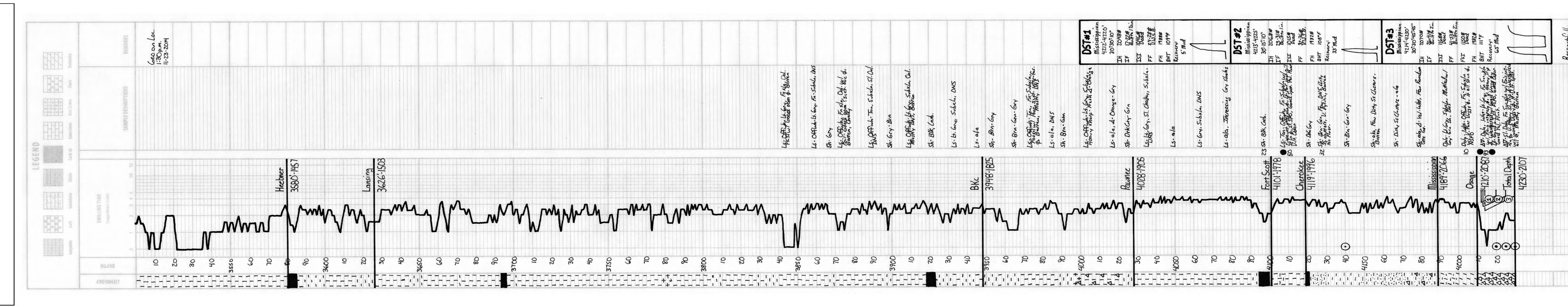
Displacement 3400' Mud Type Chemical

Summary and Recommendations

The location for the Schniepp-Anslover Unit #1 was found via 3-D seismic survey. The new well ran structurally as expected on all datums except for the Mississippian Osage. Three Drill Stem Tests were conducted, all of which were negative. After all gathered data had been examined the decision was made to plug and abandon the Schniepp-Anslover Unit #1 well.

Respectfully Submitted,

Jason T Alm
Hard Rock Consulting, Inc.



Respectfully Submitted
Jason T Alm
11/23-2014