



**TRILOBITE
TESTING, INC**

DRILL STEM TEST REPORT

Vincent Oil Corp.
155 N. Market Ste. 700
Wichita, KS 67202-1821
ATTN: Jim Hall

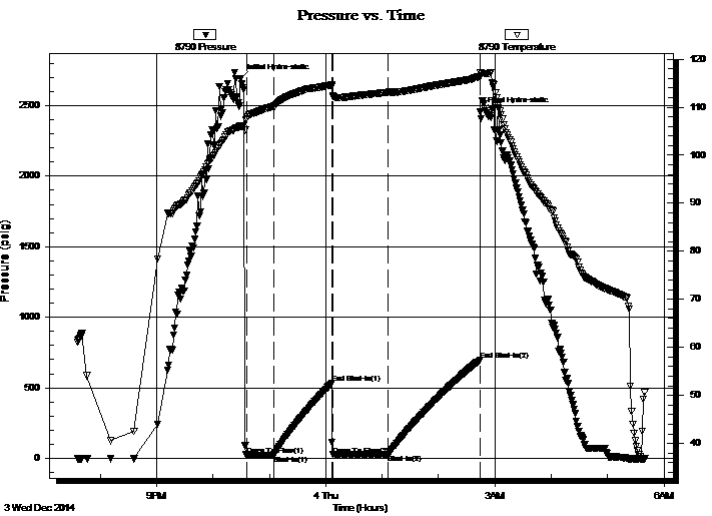
29-29s-24w
Scheib 1-29
Job Ticket: 59953 **DST#: 2**
Test Start: 2014.12.03 @ 19:35:55

GENERAL INFORMATION:

Formation: **Morrow**
Deviated: No Whipstock: 0.00 ft (KB)
Time Tool Opened: 22:35:40
Time Test Ended: 05:39:40
Interval: **5274.00 ft (KB) To 5336.00 ft (KB) (TVD)**
Total Depth: 5336.00 ft (KB) (TVD)
Hole Diameter: 7.88 inches Hole Condition: Fair
Test Type: Conventional Bottom Hole (Reset)
Tester: Ryan Reynolds
Unit No: 68
Reference Elevations: 2586.00 ft (KB)
2574.00 ft (CF)
KB to GR/CF: 12.00 ft

Serial #: 8790 **Inside**
Press@RunDepth: 27.94 psig @ 5278.00 ft (KB) Capacity: 8000.00 psig
Start Date: 2014.12.03 End Date: 2014.12.04 Last Calib.: 2014.12.04
Start Time: 19:36:00 End Time: 05:39:40 Time On Btm: 2014.12.03 @ 22:29:10
Time Off Btm: 2014.12.04 @ 02:44:40

TEST COMMENT: IF: Strong blow . BOB @ 1min.
IS: No blow
FF: Strong blow . BOB immed. No GTS.
FS: No blow



PRESSURE SUMMARY

Time (Min.)	Pressure (psig)	Temp (deg F)	Annotation
0	2691.25	106.04	Initial Hydro-static
7	21.79	107.59	Open To Flow (1)
36	22.94	110.06	Shut-In(1)
98	534.24	114.60	End Shut-In(1)
99	25.27	112.39	Open To Flow (2)
158	27.94	113.09	Shut-In(2)
255	698.41	116.40	End Shut-In(2)
256	2456.17	117.24	Final Hydro-static

Recovery

Length (ft)	Description	Volume (bbl)
40.00	Drig mud 100%m	0.56
0.00	3645' GIP	0.00

* Recovery from multiple tests

Gas Rates

Choke (inches)	Pressure (psig)	Gas Rate (m ³ /d)



**TRILOBITE
TESTING, INC**

DRILL STEM TEST REPORT

FLUID SUMMARY

Vincent Oil Corp.

29-29s-24w

155 N. Market Ste. 700
Wichita, KS 67202-1821

Scheib 1-29

Job Ticket: 59953

DST#: 2

ATTN: Jim Hall

Test Start: 2014.12.03 @ 19:35:55

Mud and Cushion Information

Mud Type: Gel Chem

Cushion Type:

Oil API:

deg API

Mud Weight: 9.00 lb/gal

Cushion Length:

ft

Water Salinity:

9400 ppm

Viscosity: 62.00 sec/qt

Cushion Volume:

bbf

Water Loss: 9.58 in³

Gas Cushion Type:

Resistivity: ohm.m

Gas Cushion Pressure:

psig

Salinity: 9400.00 ppm

Filter Cake: 0.06 inches

Recovery Information

Recovery Table

Length ft	Description	Volume bbf
40.00	Drig mud 100%m	0.561
0.00	3645' GIP	0.000

Total Length: 40.00 ft Total Volume: 0.561 bbf

Num Fluid Samples: 0

Num Gas Bombs: 0

Serial #: none

Laboratory Name:

Laboratory Location:

Recovery Comments:

Pressure vs. Time

