

GEOLOGIST'S REPORT

DRILLING TIME AND SAMPLE LOG

COMPANY BRUNGARDT OIL & LEASING, INC.

ELEVATIONS

LEASE STRANGER VALLEY A #1

KB 1808'

FIELD STRANGER VALLEY

DF _____

LOCATION 1540' FSL 465' FEL

GL 1803'

SEC 26 TWP 12S RGE 15W

COUNTY Russell STATE KANSAS

Measurements Are All From Kelly Buser's

CONTRACTOR SHIELDS DRILLING, INC.

SPUD 10-22-2014 COMP 10-28-2014

CASING SURFACE 8 5/8" PRODUCTION D.A.

RTD 3330 (-1522) LTD _____

MUD UP 2600' TYPE MUD CHEMICAL

ELECTRICAL SURVEYS
 RAG
 MICRO

SAMPLES SAVED FROM _____ TO _____ RTD

DRILLING TIME KEPT FROM _____ TO _____ RTD

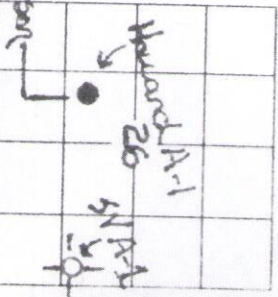
SAMPLES EXAMINED FROM _____ TO _____ RTD

GEOLOGICAL SUPERVISION FROM _____ TO _____ RTD

GEOLOGIST ON WELL BRAD J. HUTCHINSON

FORMATION TOPS LOG SAMPLES

ANHYDRITE	814	+934 (+6)	816	(+932)
TOPEKA	2111	-903 (-6)	2114	(-906)
HEERKNER	2935	-1125 (-7)	2936	(-1128)
TORONTO	2953	-1145 (-6)	2958	(-1150)
LANSHIRE	2984	-1176 (-6)	2986	(-1178)
BASE KANSAS (1)	3229	-1431 (-10)	3244	(-1436)
W. ARBUCKLE	3275	-1485 (-23)	3270	(-1482)




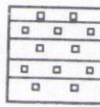
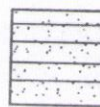


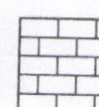
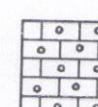
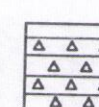
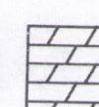
REMARKS It was recommended based on the three (3) negative drillstem tests, and there being no zones worthy of any further testing, that the STRANGER VALLEY A #1, be plugged and abandoned at a rotary total depth of 3330 (-1522).

Daily Progress:

10/22	MIRU
23	Surface pipe set
24	1580
25	DST-1
26	DST-2
27	DST-3
28	3330 RTD

Respectfully Submitted,
Brad J. Hutchinson
 Brad J. Hutchinson

LEGEND

- 
Anhydrite
- 
Salt
- 
Sandstone
- 
Shale
- 
Carb sh
- 
Limestone
- 
Ooi.Lime
- 
Chert
- 
Dolomite

Anhydrite Salt Sandstone Shale Carb sh Limestone Ool.Lime Chert Dolomite

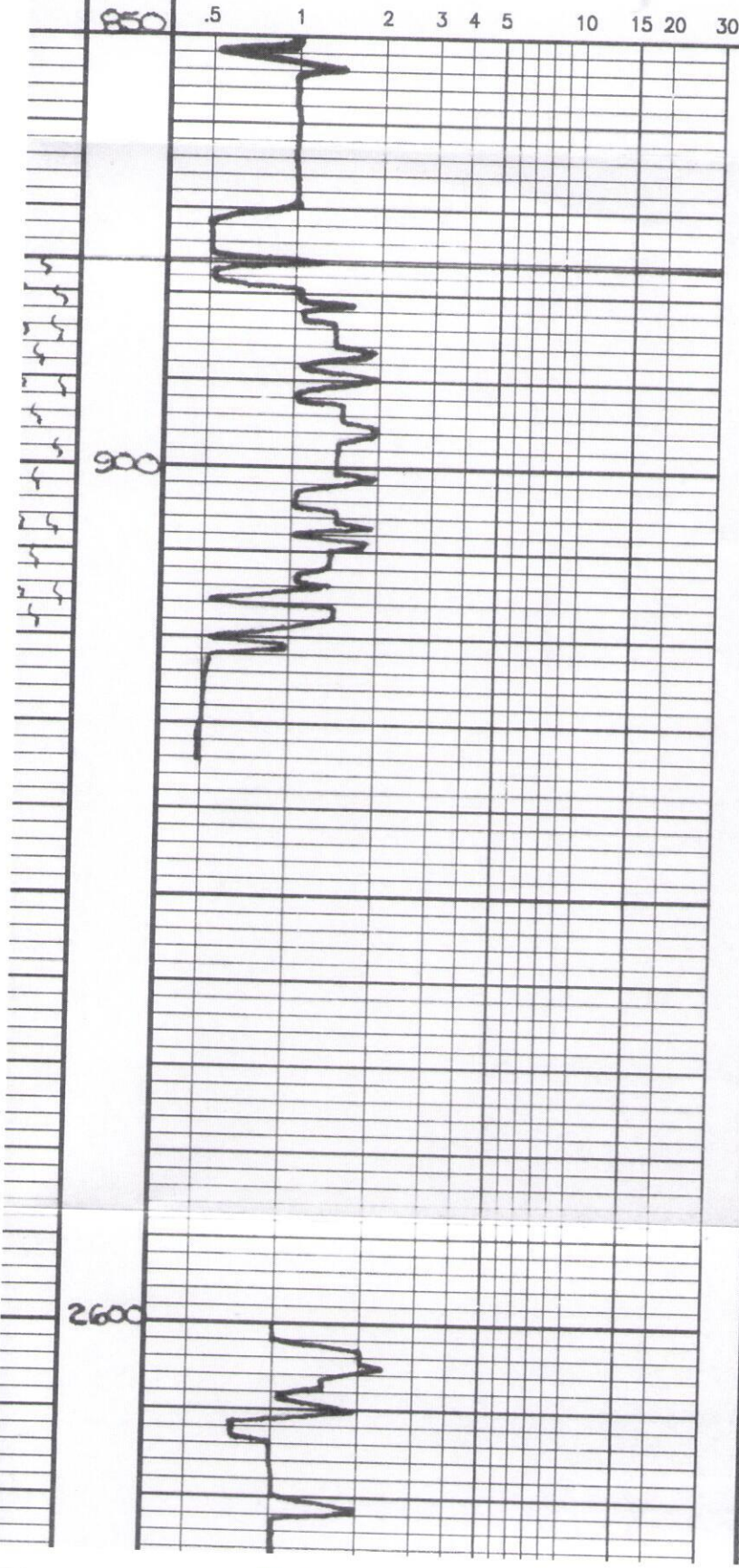
LITHOLOGY

DEPTH

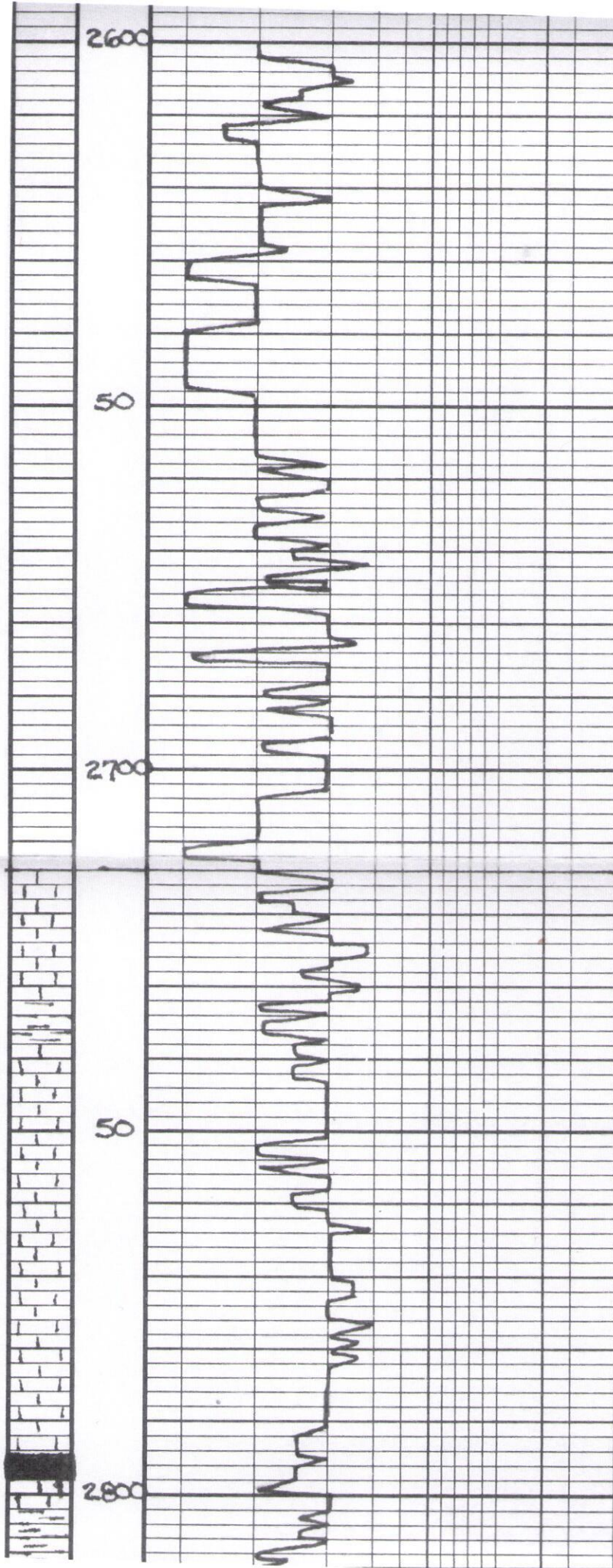
DRILLING TIME
(Logarithmic Scale)

SAMPLE DESCRIPTIONS

REMARKS



ANHY 876 (+932)



TOPEKA 2714 (-906)

LS wht-cream fine-chalky
 fr ppt pp of v. chalky
 gd blk brn brn - bot (even)
 SFO FR odor

sh gry

LS gry med highly foss

sh gry LS AA

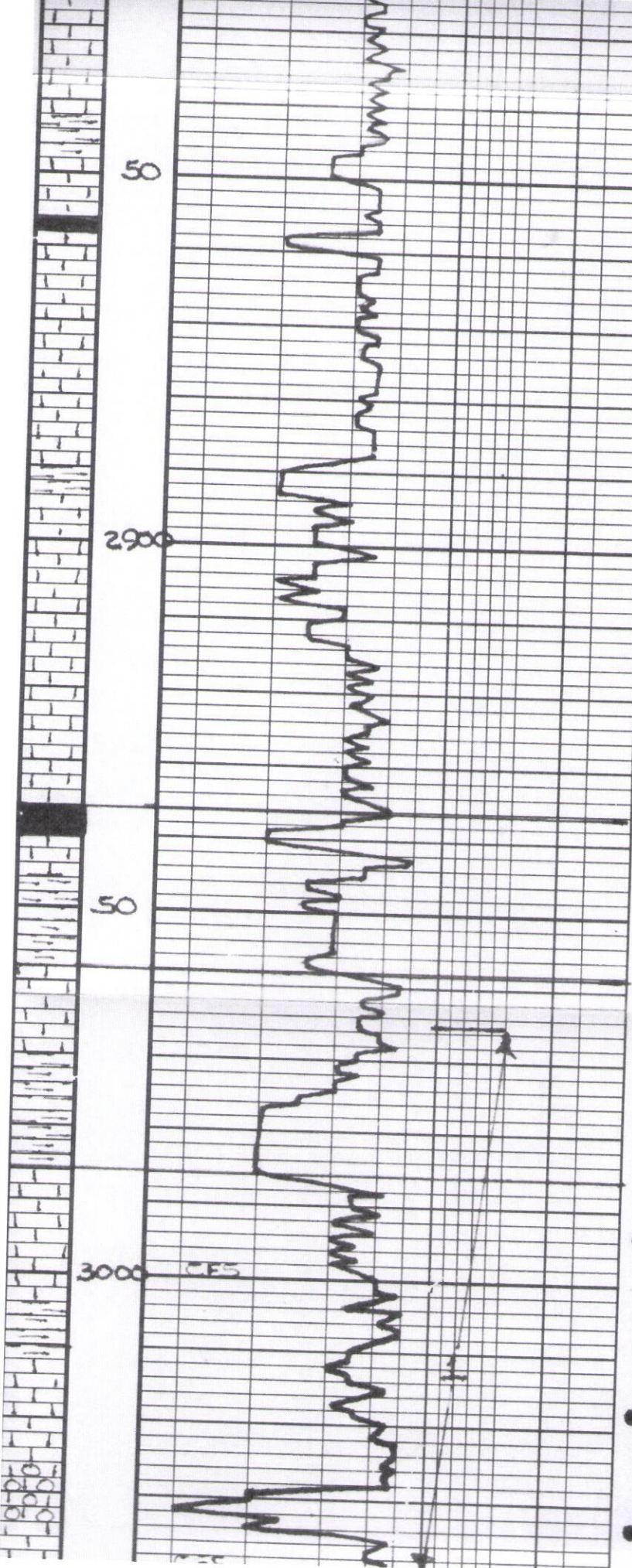
LS buff-cream fine
 highly foss FR A

abund² wstt chalky
 LS,

LS AA blk gry foss LS

sh blk carb

LS cream wht highly
 chalky fine



braky

same area.

a.a. full gry sh

sh blk carb.

ls carb. wht FNXL
see loss

same. A.A.

sh gry

ls lt gry FNXL sl loss
Doe TR spt lt drn sten
NEO or oddr TR up p
or

wht chunky

ls gry doe w/abund
wht chunk

HEEBNER 2936 (-1128)
sh blk carb.

sh gry - pale grn

TORONTO 2958 (-1150)
ls crmly wht Bladdy
sl loss

sh rug gry
brn red

LANING 2986 (-1198)

ls wht - crm FNXL chunky
sl loss TR poorly dev pp
sl loss of TR spt led sta
NEO sl oddr abund wnt
chunk

sh gry - pale grn

sh ork. red

ls crmly wht FNXL col
loss spt int col - sl vng
spt lt brn sta TR po
FT odor abund berry wht
A

ls gry FNXL col - or
of rec of FR - gd sld
of sta out of spt lossy
of odor

DST-1, 2965-30
30 · 30 · 60 · 6
IF. BUILT TO 6'
FF. BUILT TO 7'
REC. 85' MUD
25' Muddy wa
SIP (425-42
FP (29-72) X 72
HSH (1442-14

LS with fine SL loss
w/ abund water content
ND

SL of LS R.A.

LS grey v. disc
w/ water grey stain

BKC. 3244 (-1436)

SL grey - pale grey
(granular)

W.

ARABBLE 3270 (-1462)

Dolo (t brn disc. TR.
asphaltic 570.

LS R.A. w/ abund grey
sh.

VC SL and abund
VC A 006.

Same R.A.

Dolo grey disc.

Abund honey with A.
some waxy /

ND

50

3300

CE5