

# Geologic Report

Drilling Time and Sample Log

Operator <b>American Warrior, Inc.</b>		KB Elevation 2238'
Lease SNS No. <b>2-7</b>	DF 2230'	GL
API # <b>15-145-21780-0000</b>		
Field <b>Ben</b>		
Location <b>2260' FSL &amp; 600' FWL</b>		
Sec. <b>7</b>	Tw. <b>20s</b>	Rge. <b>20w</b>
County <b>Pawnee</b>		State <b>Kansas</b>
Casing Record Surface 8 5/8" @ 221'		Production 5 1/2" @ 4380'
Electrical Surveys None		

Formation	Log Tops	Sample Tops	Struct Comp
Anhydrite		1430' +808	
Base		1461' +777	+5
Heebner		3749' -1511	+1
Lansing		3797' -1559	+2
BKc		4132' -1894	+6
Pawnee		4260' -2022	
Fort Scott		4286' -2048	+5
Cherokee		4304' -2066	+5
Mississippian		4370' -2132	-2
Total Depth		4381' -2143	

Reference Well For Structural Comparison American Energies Corp. Smith A #1  
C NW SW Sec. 7 T20s R20w Pawnee Co. Kansas

Drilling Contractor	Discovery Drilling Co. Inc.	Rig #3
Commenced	11-11-2014	Completed 11-17-2014
Samples Saved From	4000'	To RTD
Drilling Time Kept From	3700'	To RTD
Samples Examined From	4000'	To RTD
Geological Supervision From	4000'	To RTD

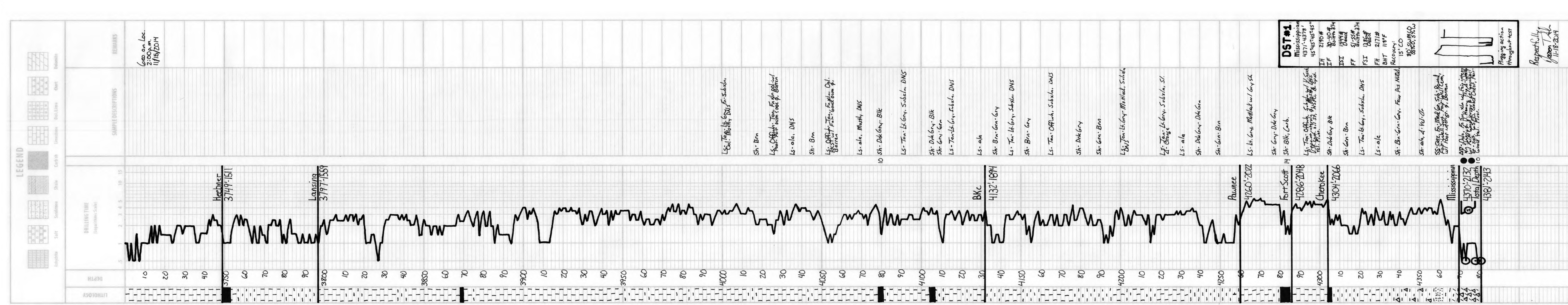
Displacement 3600' Mud Type Chemical

## Summary and Recommendations

The location for the SNS #2-7 was found via 3-D seismic survey. The new well ran structurally as expected via the survey. One Drill Stem Test was conducted which recovered commercial amounts of oil from the Mississippian Osage Formation. After all gathered data had been examined the decision was made to run 5 1/2 inch production casing to further evaluate the SNS #2-7 well.

Respectfully Submitted,

Jason T Alm  
Hard Rock Consulting, Inc.



<b>DST #1</b>	
Mississippian	4370'-2132'
Fort Scott	4286'-2048'
Cherokee	4304'-2066'
Heebner	3749'-1511'
Lansing	3797'-1559'
BKc	4132'-1894'
Pawnee	4260'-2022'
Fort Scott	4286'-2048'
Cherokee	4304'-2066'
Mississippian	4370'-2132'

Respectfully,  
Jason T Alm  
11-18-2014