



**BASIN SERVICES, LLC**  
 P O BOX 4268  
 ABILENE, TX 79608-4268  
 Phone # (325)690-0053  
 Fax # (325)698-0055

# TICKET

TICKET NUMBER: WY-18-1  
 TICKET DATE: 05/08/2013

SANDRIDGE ENERGY  
 123 ROBERT S KERR AVE  
 OKLAHOMA CITY, OK 73102-6406

YARD: WY WAYNOKA OK  
 LEASE: Thomas  
 WELL#: 3319 1-28H  
 RIG #: Lariat 3  
 Co/St: COMANCHE, KS

DESCRIPTION	QUANTITY	RATE	AMOUNT
5/7-8/2013 DRILLED 30" CONDUCTOR HOLE			
5/7-8/2013 20" CONDUCTOR PIPE (.250 WALL)			
5/7-8/2013 6' X 6' CELLAR TINHORN WITH PROTECTIVE RING			
5/7-8/2013 DRILL & INSTALL 6' X 6' CELLAR TINHORN			
5/7-8/2013 DRILLED 20" MOUSE HOLE (PER FOOT)			
5/7-8/2013 16" CONDUCTOR PIPE (.250 WALL)			
5/7-8/2013 MOBILIZATION OF EQUIPMENT & ROAD PERMITTING FEE			
5/7-8/2013 WELDING SERVICES FOR PIPE & LIDS			
5/7-8/2013 PROVIDED EQUIPMENT & LABOR TO ASSIST IN PUMPING CONCRETE			
5/7-8/2013 PROVIDED METAL LIDS (1 FOR CONDUCTOR & 2 FOR MOUSEHOLE PIPE)			
5/7-8/2013 11 YARDS 10 SACK GROUT			
5/7-8/2013 TAXABLE ITEMS			6,490.00
5/7-8/2013 BID + TAXABLE ITEMS			14,760.00
			<b>Sub Total:</b> 21,250.00
			<b>Tax COMANCHE COUNTY (6.3 %):</b> 408.87
			<b>TICKET TOTAL:</b> <u>\$ 21,658.87</u>

I, the undersigned, hereby accept the acceptance of the above listed goods and/or services.

Approved Signature: \_\_\_\_\_

AFE Number: DC 12784  
 Well Name: Thomas 3319 1-28H  
 Code: 850.00  
 Amount: 21,658.87  
 Co. Man: John Fortune  
 Co. Man Sig.: [Signature] 6/12/2013  
 Notes: \_\_\_\_\_

RECEIVED

MAY 28 2013

HALLIBURTON

REGULATORY DEPT  
SANDRIDGE ENERGY

Cementing Job Summary

The Road to Excellence Starts with Safety

Sold To #: 305021	Ship To #: 2998273	Quote #:	Sales Order #: 900438188
Customer: SANDRIDGE ENERGY INC EBUSINESS		Customer Rep: , Jessie	
Well Name: Thomas 1	Well #: 28H	API/UWI #:	
Field:	City (SAP): COLDWATER	County/Parish: Comanche	State: Kansas
Contractor: Lariat	Rig/Platform Name/Num: 3		
Job Purpose: Cement Conductor Casing			
Well Type: Development Well		Job Type: Cement Conductor Casing	
Sales Person: FRENCH, JEREMY		Srvc Supervisor: RODRIGUEZ, EDGAR	MBU ID Emp #: 442125

Job Personnel

HES Emp Name	Exp Hrs	Emp #	HES Emp Name	Exp Hrs	Emp #	HES Emp Name	Exp Hrs	Emp #
JOHNSON, MATTHEW Warren	23.5	525955	RAMIREZ, JORGE M.	23.5	498481	RODRIGUEZ, EDGAR Alejandro	23.5	442125

Equipment

HES Unit #	Distance-1 way	HES Unit #	Distance-1 way	HES Unit #	Distance-1 way	HES Unit #	Distance-1 way

Job Hours

Date	On Location Hours	Operating Hours	Date	On Location Hours	Operating Hours	Date	On Location Hours	Operating Hours
5/14/2013	3.5	1	5/15/2013	20	5			

TOTAL Total is the sum of each column separately

Job

Job Times

Formation Name	Formation Depth (MD)	Top	Bottom	Called Out	Date	Time	Time Zone	
Form Type	Job depth MD	365. ft	Job Depth TVD	365. ft	Job Started	15 - May - 2013	03:41	CST
Water Depth	Perforation Depth (MD)	From	To	Departed Loc	15 - May - 2013	20:00	CST	

Well Data

Description	New / Used	Max pressure psig	Size in	ID in	Weight lbm/ft	Thread	Grade	Top MD ft	Bottom MD ft	Top TVD ft	Bottom TVD ft
17.5" Open Hole				17.5					330.		
13.375" Water String	Unknown		13.375	12.415	68.	BTC	N-80		330.		

Sales/Rental/3<sup>rd</sup> Party (HES)

Description	Qty	Qty uom	Depth	Supplier
PLUG,CMTG, TOP, 13 3/8, HWE, 11.79 MIN/12.72	1	EA		
SUGAR - GRANULATED	40	LB		

Tools and Accessories

Type	Size	Qty	Make	Depth	Type	Size	Qty	Make	Depth	Type	Size	Qty	Make
Guide Shoe					Packer					Top Plug	13 3/8	1	HES
Float Shoe					Bridge Plug					Bottom Plug			
Float Collar					Retainer					SSR plug set			
Insert Float										Plug Container	13 3/8	1	HES
Stage Tool										Centralizers			

Miscellaneous Materials

Gelling Agt	Conc	Surfactant	Conc	Acid Type	Qty	Conc	%
Treatment Fld	Conc	Inhibitor	Conc	Sand Type	Size	Qty	

Fluid Data

Stage/Plug #: 1	Fluid Name	Qty	Qty uom	Mixing Density lbm/gal	Yield ft3/sk	Mix Fluid Gal/sk	Rate bbl/min	Total Mix Fluid Gal/sk
Fluid #	Stage Type							



# HALLIBURTON

## Cementing Job Summary

1	Fresh Water		10.00	bbbl	8.33	.0	.0	.0	
2	Lead Cement	EXTENDACEM (TM) SYSTEM (452981)	200.0	sacks	12.4	2.11	11.57		11.57
	3 %	CALCIUM CHLORIDE, PELLET, 50 LB (101509387)							
	0.25 lbm	POLY-E-FLAKE (101216940)							
	11.571 Gal	FRESH WATER							
3	Tail Cement	SWIFTCEM (TM) SYSTEM (452990)	200.0	sacks	15.6	1.2	5.32		5.32
	2 %	CALCIUM CHLORIDE, PELLET, 50 LB (101509387)							
	0.125 lbm	POLY-E-FLAKE (101216940)							
	5.319 Gal	FRESH WATER							
4	Displacement		48.00	bbbl	8.33	.0	.0	.0	
<b>Calculated Values</b>		<b>Pressures</b>			<b>Volumes</b>				
Displacement	48	Shut In: Instant		Lost Returns	YES	Cement Slurry	118 / 76	Pad	
Top Of Cement	SURFACE	5 Min		Cement Returns	NO	Actual Displacement	48	Treatment	
Frac Gradient		15 Min		Spacers	10	Load and Breakdown		Total Job	252
<b>Rates</b>									
Circulating	5	Mixing	5	Displacement	5	Avg. Job	5		
Cement Left In Pipe	Amount	42 ft	Reason	Shoe Joint					
Frac Ring # 1 @	ID	Frac ring # 2 @	ID	Frac Ring # 3 @	ID	Frac Ring # 4 @	ID		
The Information Stated Herein Is Correct				Customer Representative Signature					

RECEIVED

MAY 28 2013

**HALLIBURTON**

**Cementing Job Summary**

REGULATORY DEPT  
SANDRIDGE ENERGY  
*The Road to Excellence Starts with Safety*

Sold To #: 305021	Ship To #: 2998273	Quote #:	Sales Order #: 900443680
Customer: SANDRIDGE ENERGY INC EBUSINESS		Customer Rep: Cummings, Parker	
Well Name: Thomas 3319	Well #: 1-28H	API/UWI #: 15-033-21714	
Field:	City (SAP): COLDWATER	County/Parish: Comanche	State: Kansas
Legal Description: Section 21 Township 33S Range 19W			
Contractor: Lariat	Rig/Platform Name/Num: 3		
Job Purpose: Cement Surface Casing			
Well Type: Development Well	Job Type: Cement Surface Casing		
Sales Person: FRENCH, JEREMY	Srvc Supervisor: WILTSHIRE, MERSHEK	MBU ID Emp #: 195811	

**Job Personnel**

HES Emp Name	Exp Hrs	Emp #	HES Emp Name	Exp Hrs	Emp #	HES Emp Name	Exp Hrs	Emp #
BERUMEN, EDUARDO	7	267804	ESTRADA, JOSE Corral	7	541275	HEIDT, JAMES Nicholas	7	517102
WILTSHIRE, MERSHEK TonJe	7	195811						

**Equipment**

HES Unit #	Distance-1 way	HES Unit #	Distance-1 way	HES Unit #	Distance-1 way	HES Unit #	Distance-1 way

**Job Hours**

Date	On Location Hours	Operating Hours	Date	On Location Hours	Operating Hours	Date	On Location Hours	Operating Hours

TOTAL Total is the sum of each column separately

**Job**

**Job Times**

Formation Name	Top	Bottom	Called Out	Date	Time	Time Zone
Formation Depth (MD)			16 - May - 2013	07:30	CST	
Form Type	BHST		On Location			
Job depth MD	900. ft	Job Depth TVD	16 - May - 2013	08:32	CST	
Water Depth		Wk Ht Above Floor	16 - May - 2013	19:45	GMT	
Perforation Depth (MD)	From	To	Departed Loc	16 - May - 2013	21:00	CST

**Well Data**

Description	New / Used	Max pressure psig	Size in	ID in	Weight lbm/ft	Thread	Grade	Top MD ft	Bottom MD ft	Top TVD ft	Bottom TVD ft
12.25" Open Hole				12.25				325.	900.		
13.375" Water String	Unknown		13.375	12.415	68.	BTC	N-80	.	325.		
9.625" Surface Casing	Unknown		9.625	8.921	36.	LTC	J-55	.	894.		

**Sales/Rental/3<sup>rd</sup> Party (HES)**

Description	Qty	Qty uom	Depth	Supplier
PLUG,CMTG, TOP, 9 5/8, HWE, 8.16 MIN/9.06 MA	1	EA		

**Tools and Accessories**

Type	Size	Qty	Make	Depth	Type	Size	Qty	Make	Depth	Type	Size	Qty	Make
Guide Shoe					Packer					Top Plug			
Float Shoe					Bridge Plug					Bottom Plug			
Float Collar					Retainer					SSR plug set			
Insert Float										Plug Container			
Stage Tool										Centralizers			

**Miscellaneous Materials**

Gelling Agt	Conc	Surfactant	Conc	Acid Type	Qty	Conc	%
Treatment Fld	Conc	Inhibitor	Conc	Sand Type	Size	Qty	



Fluid Data										
Stage/Plug #: 1										
Fluid #	Stage Type	Fluid Name	Qty	Qty uom	Mixing Density lbm/gal	Yield ft <sup>3</sup> /sk	Mix Fluid Gal/sk	Rate bbl/min	Total Mix Fluid Gal/sk	
1	Fresh Water		10.00	bbl	8.33	.0	.0	.0		
2	Lead Cement	EXTENDACEM (TM) SYSTEM (452981)	290.0	sacks	12.4	2.11	11.57		11.57	
	3 %	CALCIUM CHLORIDE, PELLET, 50 LB (101509387)								
	0.25 lbm	POLY-E-FLAKE (101216940)								
	11.571 Gal	FRESH WATER								
3	Tail Cement	SWIFTCEM (TM) SYSTEM (452990)	200.0	sacks	15.6	1.2	5.32		5.32	
	2 %	CALCIUM CHLORIDE, PELLET, 50 LB (101509387)								
	0.125 lbm	POLY-E-FLAKE (101216940)								
	5.319 Gal	FRESH WATER								
4	Displacement		66.00	bbl	8.33	.0	.0	.0		
Calculated Values			Pressures			Volumes				
Displacement		Shut In: Instant		Lost Returns		Cement Slurry		Pad		
Top Of Cement		5 Min		Cement Returns		Actual Displacement		Treatment		
Frac Gradient		15 Min		Spacers		Load and Breakdown		Total Job		
Rates										
Circulating		Mixing		Displacement		Avg. Job				
Cement Left In Pipe	Amount	43 ft	Reason	Shoe Joint						
Frac Ring # 1 @	ID	Frac ring # 2 @	ID	Frac Ring # 3 @	ID	Frac Ring # 4 @	ID			
The Information Stated Herein Is Correct				Customer Representative Signature						

RECEIVED

JUN 4 2013

**HALLIBURTON**

*Cementing Job Summary*

REGULATORY DEPT

*The Road to Excellence Starts with Safety*

Sold To #: 305021	Ship To #: 2998273	Quote #:	Sales Order #: 900463092
Customer: SANDRIDGE ENERGY INC EBUSINESS		Customer Rep: ., Jessie	
Well Name: Thomas 3319	Well #: 1-28H	API/UWI #: 15-033-21714	
Field:	City (SAP): COLDWATER	County/Parish: Comanche	State: Kansas
Legal Description: Section 21 Township 33S Range 19W			
Contractor: Lariat		Rig/Platform Name/Num: 3	
Job Purpose: Cement Intermediate Casing			
Well Type: Development Well		Job Type: Cement Intermediate Casing	
Sales Person: FRENCH, JEREMY		Srvc Supervisor: CHRISTENSEN, STUART	MBU ID Emp #: 476488

**Job Personnel**

HES Emp Name	Exp Hrs	Emp #	HES Emp Name	Exp Hrs	Emp #	HES Emp Name	Exp Hrs	Emp #
CHRISTENSEN, STUART	5.5	476488	GARCIA, DAVID F	6.5	519312	STELL, KEVIN Woodrow	5.5	450776

**Equipment**

HES Unit #	Distance-1 way	HES Unit #	Distance-1 way	HES Unit #	Distance-1 way	HES Unit #	Distance-1 way
10872308	100 mile	11256865	100 mile	11288858	100 mile	11851725	100 mile
12075278	100 mile						

**Job Hours**

Date	On Location Hours	Operating Hours	Date	On Location Hours	Operating Hours	Date	On Location Hours	Operating Hours
5/25/2013	5.5	3.5						
<b>TOTAL</b>			<i>Total is the sum of each column separately</i>					

**Job**

**Job Times**

Formation Name	Top	Bottom	Called Out	Date	Time	Time Zone
Formation Depth (MD)			On Location	25 - May - 2013	02:00	CST
Form Type		BHST	Job Started	25 - May - 2013	10:00	CST
Job depth MD	5807. ft	Job Depth TVD	Job Completed	25 - May - 2013	20:40	CST
Water Depth		Wk Ht Above Floor	Departed Loc	25 - May - 2013	21:50	CST
Perforation Depth (MD)	From	To			23:30	CST

**Well Data**

Description	New / Used	Max pressure psig	Size in	ID in	Weight lbm/ft	Thread	Grade	Top MD ft	Bottom MD ft	Top TVD ft	Bottom TVD ft
8.75" Open Hole				8.75				900.	5785.		
7" Intermediate Casing	Unknown		7.	6.276	26.	LTC	P-110	.	5785.		
9.625" Surface Casing	Unknown		9.625	8.921	36.	LTC	J-55	.	900.		

**Sales/Rental/3<sup>rd</sup> Party (HES)**

Description	Qty	Qty uom	Depth	Supplier
PLUG,CMTG, TOP, 7,HWE,5.66 MIN/6.54 MAX CS	1	EA		

**Tools and Accessories**

Type	Size	Qty	Make	Depth	Type	Size	Qty	Make	Depth	Type	Size	Qty	Make
Guide Shoe					Packer					Top Plug			
Float Shoe					Bridge Plug					Bottom Plug			
Float Collar					Retainer					SSR plug set			
Insert Float										Plug Container			
Stage Tool										Centralizers			

**Miscellaneous Materials**

Gelling Agt	Conc	Surfactant	Conc	Acid Type	Qty	Conc	%
Treatment Fld	Conc	Inhibitor	Conc	Sand Type	Size	Qty	



# HALLIBURTON

## Cementing Job Summary

Fluid Data									
Stage/Plug #: 1									
Fluid #	Stage Type	Fluid Name	Qty	Qty uom	Mixing Density lbm/gal	Yield ft <sup>3</sup> /sk	Mix Fluid Gal/sk	Rate bbl/min	Total Mix Fluid Gal/sk
1	Rig Supplied Gel Water		30.00	bbl	8.33	.0	.0	.0	
2	Lead Cement	ECONOCEM (TM) SYSTEM (452992)	135.0	sacks	13.6	1.53	7.24		7.24
	0.4 %	HALAD(R)-9, 50 LB (100001617)							
	2 lbm	KOL-SEAL, 50 LB BAG (100064232)							
	2 %	BENTONITE, BULK (100003682)							
	7.24 Gal	FRESH WATER							
3	Tail Cement	HALCEM (TM) SYSTEM (452986)	100.0	sacks	15.6	1.19	5.08		5.08
	0.4 %	HALAD(R)-9, 50 LB (100001617)							
	2 lbm	KOL-SEAL, 50 LB BAG (100064232)							
	5.076 Gal	FRESH WATER							
4	Displacement		217.00	bbl	8.33	.0	.0	.0	
Calculated Values		Pressures			Volumes				
Displacement	217	Shut In: Instant		Lost Returns	0	Cement Slurry	59	Pad	
Top Of Cement	3758	5 Min		Cement Returns	0	Actual Displacement	217	Treatment	
Frac Gradient		15 Min		Spacers	30	Load and Breakdown		Total Job	
Rates									
Circulating	4	Mixing	4	Displacement	6	Avg. Job	5		
Cement Left In Pipe	Amount	94 ft	Reason	Shoe Joint					
Frac Ring # 1 @	ID	Frac ring # 2 @	ID	Frac Ring # 3 @	ID	Frac Ring # 4 @	ID		
The Information Stated Herein Is Correct				Customer Representative Signature					

FOR Jessica Tripp  
 COMPANY Sand Ridge Energy  
 SUBJECT \_\_\_\_\_

JOB OR AUTH. NO. \_\_\_\_\_  
 PAGE 15-033-21714  
 DATE 3/20/15

P&A Thomas 3319 1-28H  
Comanche Cty, KS

BY Ronnie Orr  
Sec 21 33S-19W

## P&A Procedure w/cost

- 1) MIRUSU unflange well & NA BOP. Release PKR & PCH w/ tbg, lay down gas lift valves & PKR.
- 2) PU 7" 10K Tbg set CIBP, GITH & set CIBP @ 5334', release tbg, circ hole w/ mud & cap w/ 20K cement. PCH w/ tbg.
- 3) NA BOP, unpack 7" casing & weld on 7" pull sub. Pull 7" slips & run 11" Hydril. Cut & pull free pipe.
- 4) TIT w/ tbg @ 950', mix & spot 100Ks Class C cement. Pull up hole w/ tbg @ 400', mix & spot 50Ks cement PCH w/ tbg. NA BOP. Top out 64-4' w/ 20Ks cement.
- 5) RDMOJU cut & cap well. Disup rig anchors.

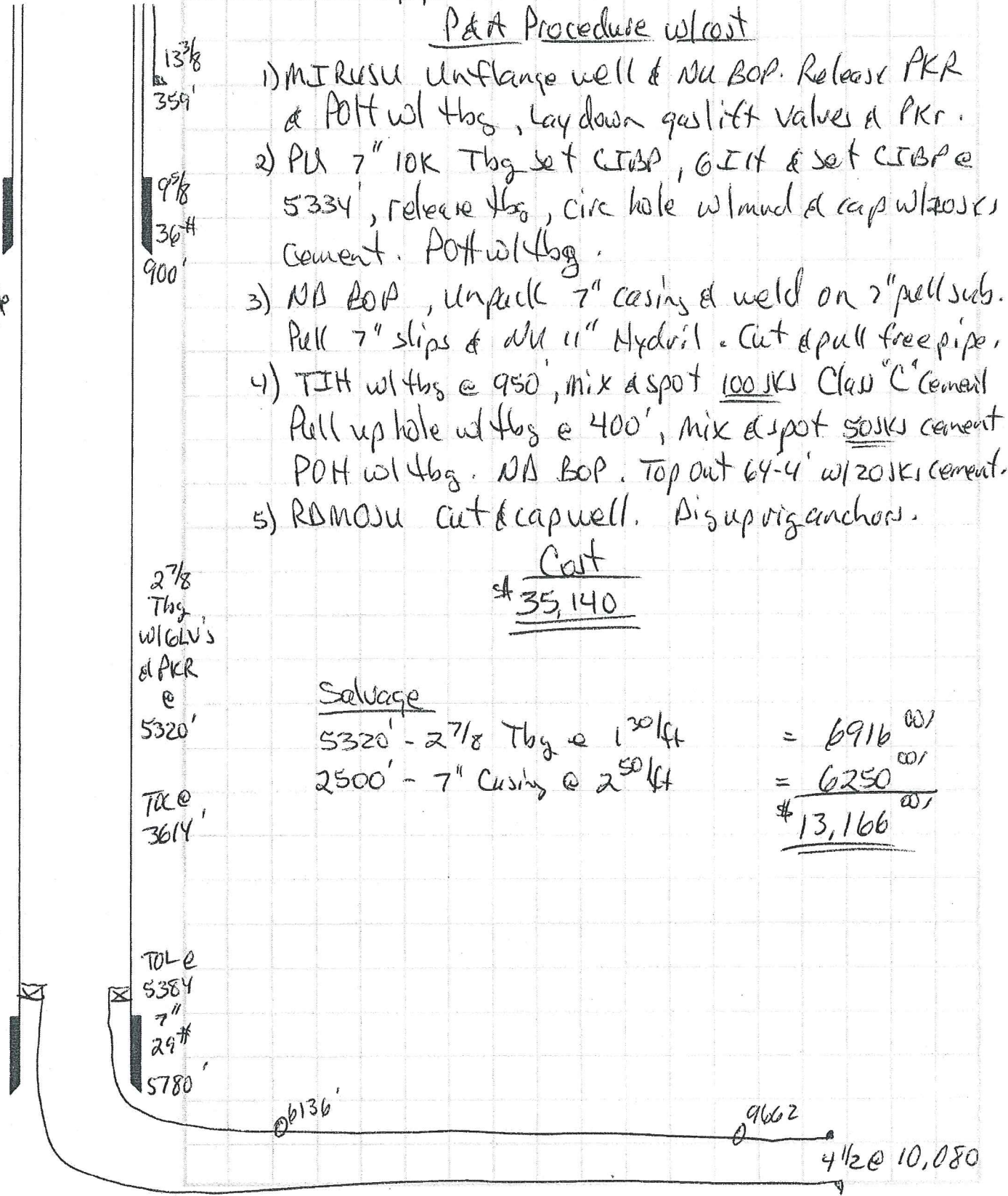
Cost  
\$ 35,140

### Salvage

5320' - 2 7/8 Tbg @ 130/ft = 6916<sup>00/</sup>  
 2500' - 7" Casing @ 250/ft = 6250<sup>00/</sup>  
\$ 13,166<sup>00/</sup>

usable wtr @

Anhydrit @ 972'



2 7/8 Tbg, w/ GLVs & PKR @ 5320'

TAC @ 3614'

TOL @ 5384'  
 7" 29#  
 5780'

Ø 6136'

Ø 9662'

4 1/2 @ 10,080'





Field: Bird East  
 County: Comanche  
 State: KS  
 Well: THOMAS 3319 1-28H  
 SH Location: SEC 21, TWP 33S, R1NG 19W  
 BH Location: SEC 28, TWP 33S, R1NG 19W  
 Elevations: 1992.5' KB; 1973' GL

Wellbore Schematic

15-033-21714  
 API No.

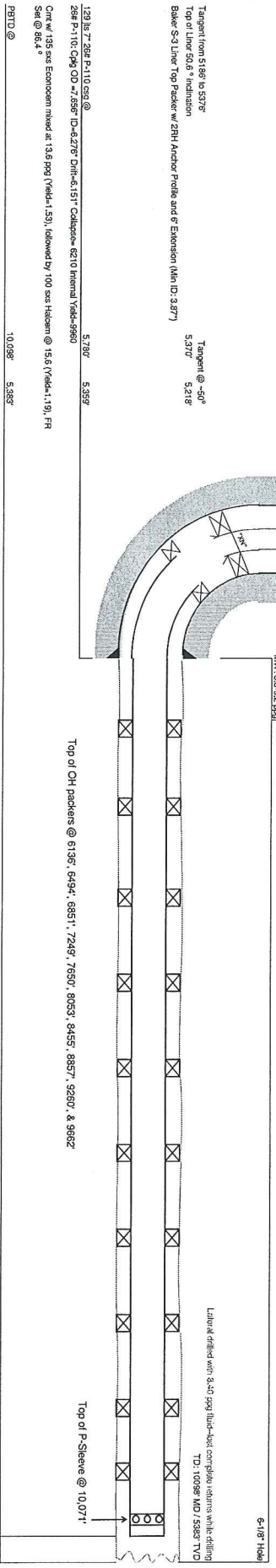
Original Completion (7/2/2013)

Current	X
Workover	X
Proposed	

Spud: 5/13/2013

Well Bore Data MD TVD

21 lbs 2.5/8" 30# J-55 59# @	900'	900'
39# J-55; C98 OD = 10.825" ID=8.821" Dth=8.765" Collapse= 2020 Internal Yield=3520		
Crtd w/ 240 sas Etandacem @ 12.4 ppq (Yield=2.11), followed by 110 sas		
Switchem @ 15.6 ppq (Yield=1.2)		
KB	20'	
55 lbs 2.7/8" 6.5# J-55 ELU 8rd Bq (161 lbs total)	1820.59'	
GLV #5	2347.75'	
16 lbs 2.7/8" 6.5# J-55 ELU 8rd Bq	2841.98'	
GLV #7	3336.35'	
13 lbs 2.7/8" 6.5# J-55 ELU 8rd Bq	3893.35'	
GLV #8	4292.19'	
13 lbs 2.7/8" 6.5# J-55 ELU 8rd Bq	4753.77'	
GLV #9	5113.40'	
14 lbs 2.7/8" 6.5# J-55 ELU 8rd Bq	5320.50'	
GLV #2	5325.50'	
17 lbs 2.7/8" 6.5# J-55 ELU 8rd Bq	5325.65'	
GLV #1		
6 sub 2.7/8" 6.5# J-55 ELU 8rd Bq		
2.313" XN profile nipple w/ 2205" NO-GO		
2.7/8" X 7" AS-III PKR		
WLEG		



128 lbs 2.5/8" P-110 59# @ 5.730' 5.389'  
 25# P-110; C98 OD = 7.256" ID=6.276" Dth=6.151" Collapse= 8210 Internal Yield=9660  
 Crtd w/ 135 sas Econocom mixed at 13.6 ppq (Yield=1.53), followed by 700 sas Halcem @ 15.6 (Yield=1.19), FR  
 Srt @ 96.4°  
 PBD @ 10.098' 5.385'  
 105 lbs 4-1/2" 11.8# N80 59# @ 10.087' 5.384'  
 11.5# N-80; C98 OD = 5.000" ID=4.000" Dth=3.875" Collapse= 6330 Internal Yield=7780  
 Crtd w/ sas P-02 50/50 mixed at 13.6 ppq (Yield=1.54), BP @ #.



March 24, 2015

Gary and Teresa Jellison

Re: Kansas Surface Owner Notice Act (House Bill 2032)

Please find attached a draft copy of the Well Plugging Application currently pending with the KCC for approval. We plan to plug the Thomas 3319 1-28H well located in Comanche County, Kansas, and you are listed as the current surface owner.

This notice is being provided pursuant to the Kansas Surface Owner Notice Act (House Bill 2032). If you have any questions, please contact us.

Sincerely,

Tiffany Golay  
Regulatory Technician  
SandRidge Energy  
123 Robert S Kerr Avenue  
Oklahoma City, OK 73102  
E: [tgolay@sandridgeenergy.com](mailto:tgolay@sandridgeenergy.com)