

GLOBAL CEMENTING, L.L.C.

1615

REMIT TO 18048 170RD
RUSSELL, KS 67665

SERVICE POINT:
RUSSELL, KS

| | | | | | | | |
|----------------------------------|------------------|----------|-------|------------|----------------------|-----------------|------------|
| DATE <u>2-24-2015</u> | SEC. | TWP. | RANGE | CALLED OUT | ON LOCATION | JOB START | JOB FINISH |
| LEASE <u>JUNIPER MAINT</u> | WELL# <u>A#2</u> | LOCATION | | | COUNTY <u>NORTON</u> | STATE <u>KS</u> | |
| OLD OR <u>(NEW)</u> (CIRCLE ONE) | | | | | | | |

CONTRACTOR WHITE KNIGHT
 TYPE OF JOB SURFACE
 HOLE SIZE 12 1/4 T.D.
 CASING SIZE 8 3/8 DEPTH 209.10
 TUBING SIZE DEPTH
 DRILL PIPE DEPTH
 TOOL DEPTH
 PRES. MAX MINIMUM
 MEAS. LINE SHOE JOINT
 CEMENT LBFT IN CSG. 20
 PERFS
 DISPLACEMENT 12 BBL.
 EQUIPMENT
 PUMP TRUCK CEMENTER BRAD
 # P1 HELPER BRANDON
 BULK TRUCK
 # B4 DRIVER JASON
 BULK TRUCK
 # DRIVER

OWNER
 CEMENT
 AMOUNT ORDERED 150 SY COM
3 9/16 CC / 2 9/16 GEL
 COMMON @
 POZMIX @
 GEL @
 CHLORIDE @
 ASC @
 @
 @
 @
 @
 @
 @
 @
 @
 @
 HANDLING @
 MILEAGE
 TOTAL

REMARKS:
ROW IN SJTS 8 3/8 CASING - HOOK UP
& CIRCULATE MUD - HOOK UP CEMENT -
MIX 150 SY - WASH UP + DISPLACE -
WITH 12 BBL H2O - SHUT IN @ 200 PSI
CEMENT DID CIRCULATE

CHARGE TO: CASTLE RESOURCES
 STREET _____
 CITY _____ STATE _____ ZIP _____

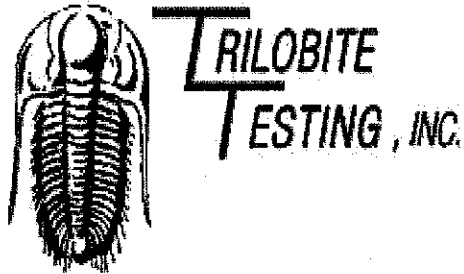
Global Cementing, L.L.C.,
 You are hereby requested to rent cementing equipment and furnish cementer and helper(s) to assist owner or contractor to do work as is listed. The above work was done to satisfaction and supervision of owner agent or contractor. I have read and understand the "GENERAL TERMS AND CONDITIONS" listed on the reverse side.

PRINTED NAME _____
 SIGNATURE Terry Austin

SERVICE
 DEPTH OF JOB _____
 PUMP TRUCK CHARGE _____
 EXTRA FOOTAGE @ _____
 MILEAGE 36 @ _____
 MANIFOLD @ _____
 @ _____
 @ _____
 TOTAL

PLUG & FLOAT EQUIPMENT
 @ _____
 @ _____
 @ _____
 @ _____
 @ _____
 TOTAL

SALES TAX (If Any) _____
 TOTAL CHARGES _____
 DISCOUNT _____ IF PAID IN 30 DAYS



DRILL STEM TEST REPORT

Prepared For: **Castle Resources, Inc.**

PO Box 87
Schoenchen, KS 67667

ATTN: Jerry Green

Juenemann A #2

32-3s-24w Norton,KS

Start Date: 2015.02.28 @ 22:34:00

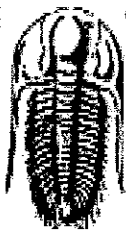
End Date: 2015.03.01 @ 06:34:50

Job Ticket #: 62457 DST #: 1

Trilobite Testing, Inc
1515 Commerce Parkway Hays, KS 67601
ph: 785-625-4778 fax: 785-625-5620

Printed: 2015.03.02 @ 09:50:57

Castle Resources, Inc. 32-3s-24w Norton,KS Juenemann A #2 DST # 1 Reagan 2015.02.28



**TRILOBITE
TESTING, INC.**

DRILL STEM TEST REPORT

Castle Resources, Inc.

32-3s-24w Norton,KS

PO Box 87
Schoenchen, KS 67667

Juenemann A #2

Job Ticket: 62457

DST#: 1

ATTN: Jerry Green

Test Start: 2015.02.28 @ 22:34:00

GENERAL INFORMATION:

Formation: **Reagan**

Deviated: No Whipstock: ft (KB)

Time Tool Opened: 01:45:20

Time Test Ended: 06:34:50

Test Type: Conventional Bottom Hole (Initial)

Tester: Phillip Gage

Unit No: 77

Interval: **3613.00 ft (KB) To 3724.00 ft (KB) (TVD)**

Total Depth: 3724.00 ft (KB) (TVD)

Hole Diameter: 7.88 inches Hole Condition: Fair

Reference Elevations: 2399.00 ft (KB)

2394.00 ft (CF)

KB to GR/CF: 5.00 ft

Serial #: 8898 Outside

Press@RunDepth: 633.80 psig @ 3614.00 ft (KB)

Start Date: 2015.02.28

End Date: 2015.03.01

Start Time: 22:34:01

End Time: 06:34:50

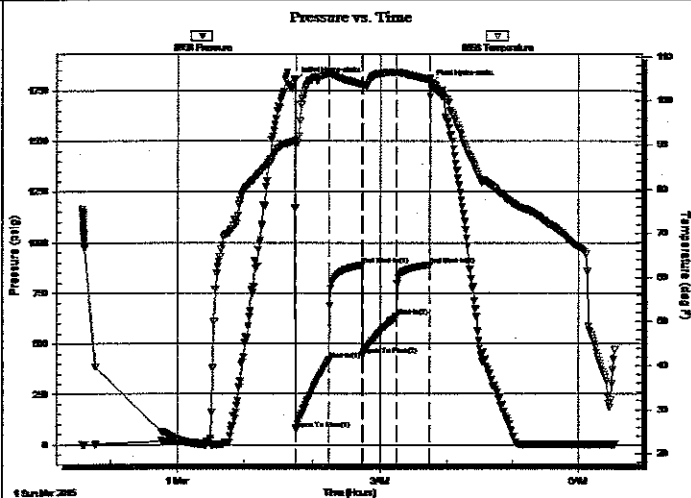
Capacity: 8000.00 psig

Last Calib.: 2015.03.01

Time On Btm: 2015.03.01 @ 01:44:50

Time Off Btm: 2015.03.01 @ 03:45:09

TEST COMMENT: 30-IF-BOB in 2 mins.
30-IS-Surface Blow in 6 mins, died 11 mins later
30-FF-BOB in 3 mins
30-FSI-No Return



PRESSURE SUMMARY

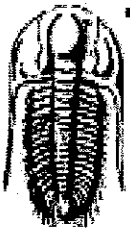
| Time (Min.) | Pressure (psig) | Temp (deg F) | Annotation |
|-------------|-----------------|--------------|----------------------|
| 0 | 1799.79 | 90.35 | Initial Hydro-static |
| 1 | 77.23 | 90.21 | Open To Flow (1) |
| 30 | 419.20 | 106.07 | Shut-In(1) |
| 60 | 887.67 | 103.66 | End Shut-In(1) |
| 60 | 442.15 | 103.46 | Open To Flow (2) |
| 90 | 633.80 | 106.45 | Shut-In(2) |
| 120 | 888.74 | 104.81 | End Shut-In(2) |
| 121 | 1784.53 | 104.90 | Final Hydro-static |

Recovery

| Length (ft) | Description | Volume (bbl) |
|-------------|--------------------------------|--------------|
| 882.00 | VSOMCW, 5%o, 10%m, 85%w | 12.37 |
| 446.00 | MW, with oil spots, 50%m, 50%w | 6.26 |
| | | |
| | | |
| | | |

Gas Rates

| | Choke (inches) | Pressure (psig) | Gas Rate (Mcf/d) |
|--|----------------|-----------------|------------------|
| | | | |



**TRILOBITE
TESTING, INC.**

DRILL STEM TEST REPORT

TOOL DIAGRAM

Castle Resources, Inc.
PO Box 87
Schoenchen, KS 67667
ATTN: Jerry Green

32-3s-24w Norton, KS
Juenemann A #2
Job Ticket: 62457 **DST#: 1**
Test Start: 2015.02.28 @ 22:34:00

Tool Information

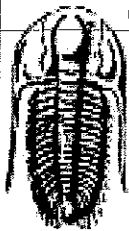
| | | | | |
|---------------------------|--------------------|-----------------------|--------------------------------|------------------------------------|
| Drill Pipe: | Length: 3617.00 ft | Diameter: 3.80 inches | Volume: 50.74 bbl | Tool Weight: 2000.00 lb |
| Heavy Wt. Pipe: | Length: 0.00 ft | Diameter: 2.75 inches | Volume: 0.00 bbl | Weight set on Packer: 25000.00 lb |
| Drill Collar: | Length: 0.00 ft | Diameter: 2.25 inches | Volume: 0.00 bbl | Weight to Pull Loose: 38000.00 lb |
| | | | <u>Total Volume: 50.74 bbl</u> | Tool Chased 0.00 ft |
| Drill Pipe Above KB: | 24.00 ft | | | String Weight: Initial 32000.00 lb |
| Depth to Top Packer: | 3613.00 ft | | | Final 35000.00 lb |
| Depth to Bottom Packer: | ft | | | |
| Interval between Packers: | 111.00 ft | | | |
| Tool Length: | 131.00 ft | | | |
| Number of Packers: | 2 | Diameter: 6.75 inches | | |

Tool Comments:

Tool Description

| Tool Description | Length (ft) | Serial No. | Position | Depth (ft) | Accum. Lengths |
|------------------|-------------|------------|----------|------------|-------------------------------------|
| Shut In Tool | 5.00 | | | 3598.00 | |
| Hydraulic tool | 5.00 | | | 3603.00 | |
| Packer | 5.00 | | | 3608.00 | 20.00 Bottom Of Top Packer |
| Packer | 5.00 | | | 3613.00 | |
| Stubb | 1.00 | | | 3614.00 | |
| Recorder | 0.00 | 8897 | Inside | 3614.00 | |
| Recorder | 0.00 | 8898 | Outside | 3614.00 | |
| Perforations | 12.00 | | | 3626.00 | |
| Change Over Sub | 1.00 | | | 3627.00 | |
| Drill Pipe | 93.00 | | | 3720.00 | |
| Change Over Sub | 1.00 | | | 3721.00 | |
| Bullnose | 3.00 | | | 3724.00 | 111.00 Bottom Packers & Anchor |

Total Tool Length: 131.00



**TRILOBITE
TESTING, INC.**

DRILL STEM TEST REPORT

FLUID SUMMARY

Castle Resources, Inc.

32-3s-24w Norton, KS

PO Box 87
Schoenchen, KS 67667

Juenemann A #2

Job Ticket: 62457 DST#: 1

ATTN: Jerry Green

Test Start: 2015.02.28 @ 22:34:00

Mud and Cushion Information

| | | | |
|----------------------------------|----------------------------|-----------------|-----------|
| Mud Type: Gel Chem | Cushion Type: | Oil API: | deg API |
| Mud Weight: 9.00 lb/gal | Cushion Length: ft | Water Salinity: | 56000 ppm |
| Viscosity: 43.00 sec/qt | Cushion Volume: bbl | | |
| Water Loss: 8.79 in ³ | Gas Cushion Type: | | |
| Resistivity: ohm.m | Gas Cushion Pressure: psig | | |
| Salinity: 1500.00 ppm | | | |
| Filter Cake: 1.50 inches | | | |

Recovery Information

Recovery Table

| Length ft | Description | Volume bbl |
|--------------|--------------------------------|---------------|
| 882.00 | VSOMCW, 5%o, 10%m, 85%w | 12.372 |
| 446.00 | MW, with oil spots, 50%m, 50%w | 6.256 |

Total Length: 1328.00 ft Total Volume: 18.628 bbl

Num Fluid Samples: 0 Num Gas Bombs: 0 Serial #:

Laboratory Name: Laboratory Location:

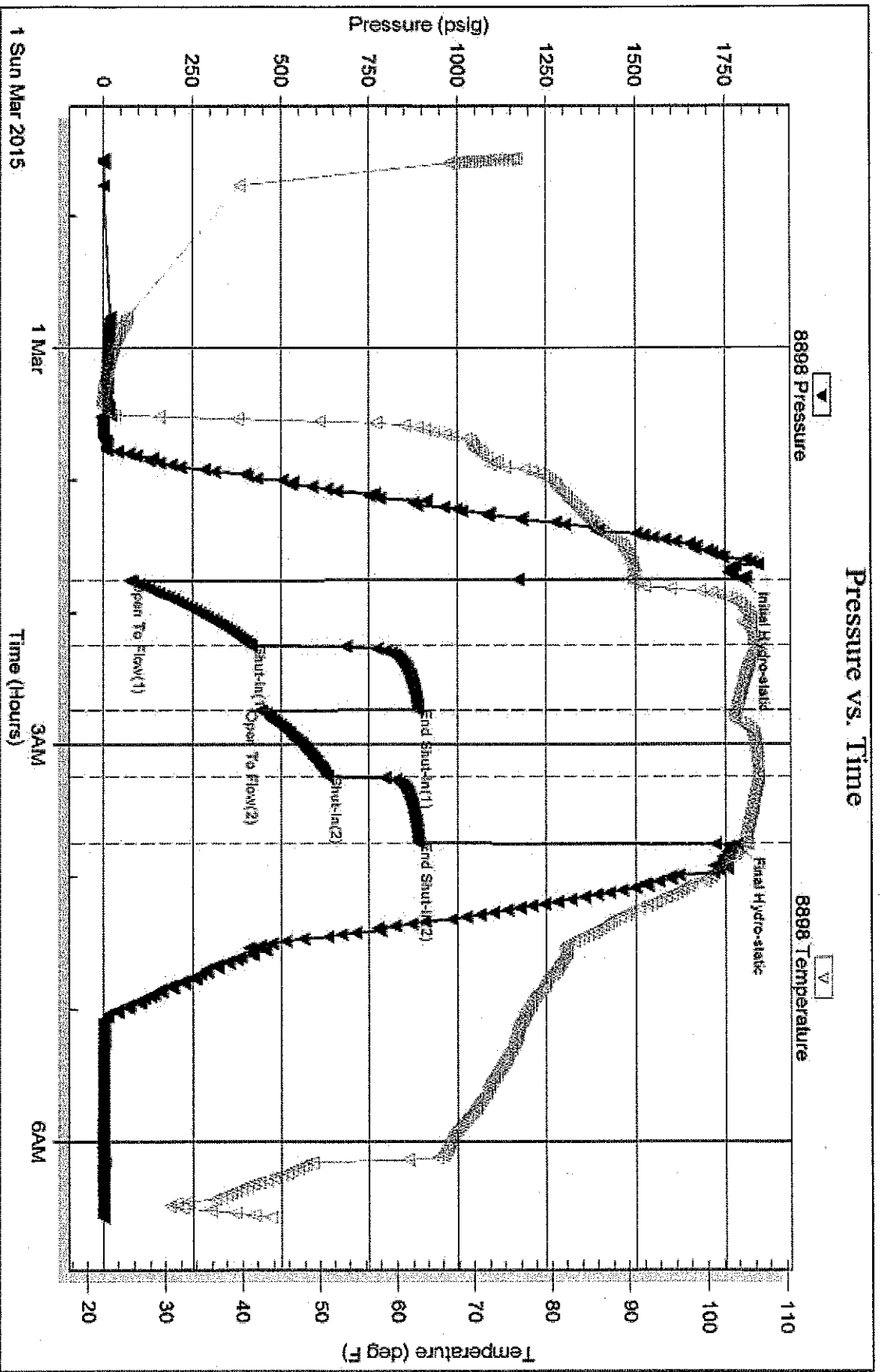
Recovery Comments: .42 @ 10 Degrees = 56000 Salinity

Serial #: 8898

Outside Castle Resources, Inc.

Juenermann A #2

DST Test Number: 1



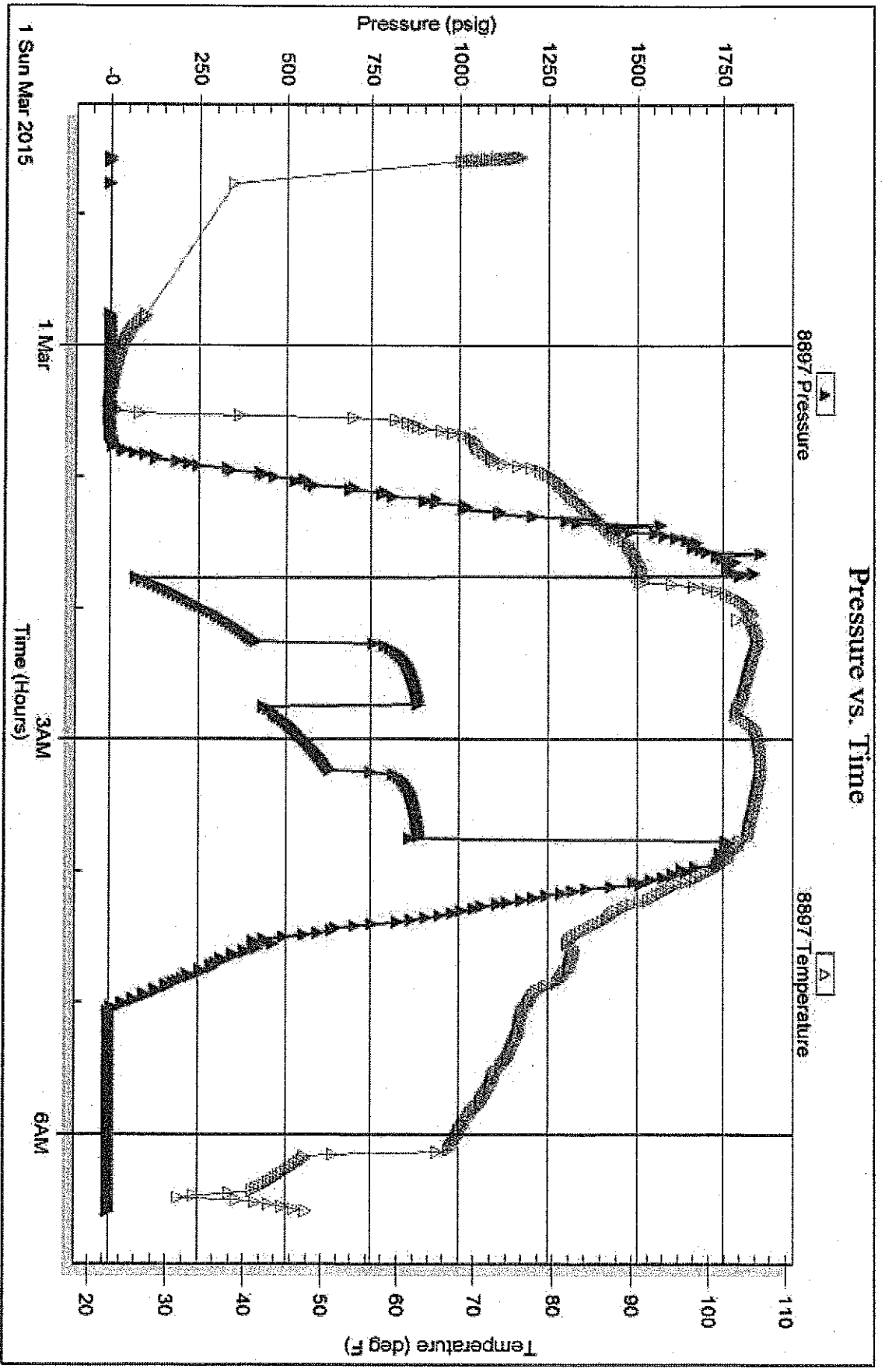
Serial #: 8897

Inside

Castle Resources, Inc.

Juennemann A.#2

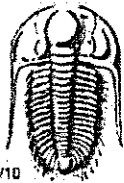
DST Test Number: 1



Tribble Testing, Inc

Ref. No: 62457

Printed: 2015.03.02 @ 09:50:58



TRILOBITE TESTING INC.

1515 Commerce Parkway • Hays, Kansas 67601

Test Ticket

NO. 62457

Well Name & No. Juennann A #3 Test No. 1 Date 2-28-15
 Company Castle Resources, Inc Elevation 2399 KB 2394 GL
 Address P.O. Box 87 Schoenchen, KS 67667
 Co. Rep / Geo. Jerry Green Rig White Knight
 Location: Sec. 32 Twp. 3s Rge. 24w Co. Norton State KS

Interval Tested 3613 - 3724 Zone Tested Reagan
 Anchor Length 111" Drill Pipe Run 3617 Mud Wt. 9
 Top Packer Depth 3608 Drill Collars Run 0 Vis 43
 Bottom Packer Depth 3613 Wt. Pipe Run 0 WL 8.8
 Total Depth 3724 Chlorides 1,500 ppm System LCM 1 1/2 #

Blow Description FF- BOB in 2mhs
ESI Surface blow @ 6mhs, died 11mhs later
FF- BOB in 3mhs
ESI No Return

| Rec | Feet of | %gas | %oil | %water | %mud |
|-------------|---------------------------|------|----------|-----------|-----------|
| <u>882'</u> | <u>VSO mcw</u> | | <u>5</u> | <u>85</u> | <u>10</u> |
| <u>446'</u> | <u>MW, with oil spots</u> | | | <u>50</u> | <u>50</u> |
| Rec | Feet of | %gas | %oil | %water | %mud |
| Rec | Feet of | %gas | %oil | %water | %mud |
| Rec | Feet of | %gas | %oil | %water | %mud |

Rec Total 1328 BHT 104 Gravity — API RW 142 @ 10 °F Chlorides 56,000 ppm

(A) Initial Hydrostatic 1799 Test 1050 T-On Location 22:27
 (B) First Initial Flow 77 Jars _____ T-Started 22:34
 (C) First Final Flow 419 Safety Joint _____ T-Open 01:45
 (D) Initial Shut-In 887 Circ Sub _____ T-Pulled 03:45
 (E) Second Initial Flow 442 Hourly Standby _____ T-Out 06:35
 (F) Second Final Flow 633 Mileage 216 RT x 2 Comments Loaded Tools
 (G) Final Shut-In 888 Sampler _____ on 3-1-15 @ 18:30
 (H) Final Hydrostatic 1,784 Straddle _____
 Ruined Shale Packer _____
 Ruined Packer _____
 Extra Copies _____

Initial Open 30
 Initial Shut-In 30
 Final Flow 30
 Final Shut-In 30
 Sub Total _____
 Total _____
 MP/DST Disc't _____

Approved By _____ Our Representative Phil's Dept Thank You

Triobite Testing Inc. shall not be liable for damaged of any kind of the property or personnel of the one for whom a test is made, or for any loss suffered or sustained directly or indirectly, through the use of its equipment, or its statements or opinion concerning the results of any test, tools lost or damaged in the hole shall be paid for at cost by the party for whom the test is made.