



**TRILOBITE  
TESTING, INC**

# DRILL STEM TEST REPORT

Trek AEC

**Lewis #1**

Job Ticket: 62626

**DST#: 1**

ATTN:

Test Start: 2015.01.19 @ 14:45:13

## GENERAL INFORMATION:

Formation: **Arbuckle?**

Deviated: No Whipstock: ft (KB)

Time Tool Opened: 17:42:13

Time Test Ended: 09:58:13

Test Type: Bottom Hole (Initial)

Tester: Paul Simpson

Unit No:

**Interval: 3685.00 ft (KB) To ft (KB) (TVD)**

Reference Elevations: ft (KB)

Total Depth: ft (KB) (TVD)

ft (CF)

Hole Diameter: inches Hole Condition:

KB to GR/CF: ft

## Serial #: 9147

Press@RunDepth: 508.91 psig @ ft (KB)

Capacity: psig

Start Date: 2015.01.19

End Date: 2015.01.20

Last Calib.: 2015.01.19

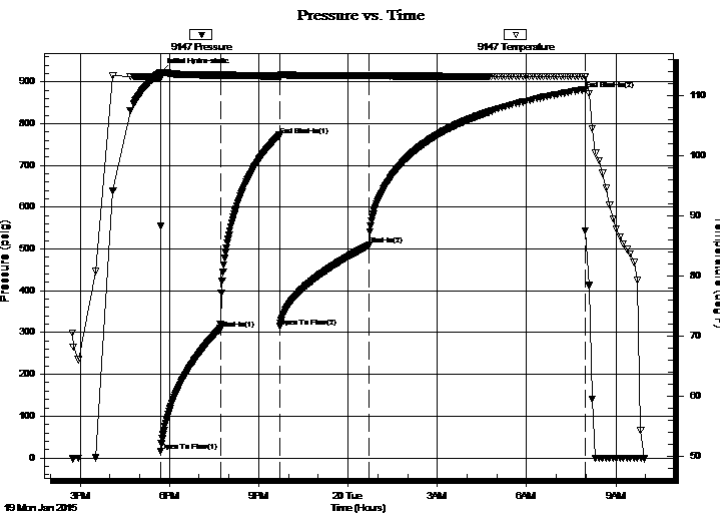
Start Time: 14:45:13

End Time: 09:58:13

Time On Btm: 2015.01.19 @ 17:41:43

Time Off Btm:

## TEST COMMENT:



## PRESSURE SUMMARY

Time (Min.)	Pressure (psig)	Temp (deg F)	Annotation
0	922.77	113.01	Initial Hydro-static
1	16.52	112.91	Open To Flow (1)
121	309.18	113.33	Shut-In(1)
240	772.32	113.17	End Shut-In(1)
241	314.29	113.11	Open To Flow (2)
421	508.91	113.24	Shut-In(2)
856	882.12	113.11	End Shut-In(2)

## Recovery

Length (ft)	Description	Volume (bbl)
1130.00	water w with oil scum at top	4.37
0.00	Rw .171@42	0.00

## Gas Rates

	Choke (inches)	Pressure (psig)	Gas Rate (Mcf/d)



**TRILOBITE  
TESTING, INC**

# DRILL STEM TEST REPORT

**FLUID SUMMARY**

Trek AEC

**Lewis #1**

Job Ticket: 62626

**DST#: 1**

ATTN:

Test Start: 2015.01.19 @ 14:45:13

## Mud and Cushion Information

Mud Type:	Water	Cushion Type:		Oil API:	deg API
Mud Weight:	lb/gal	Cushion Length:	ft	Water Salinity:	ppm
Viscosity:	sec/l	Cushion Volume:	bbbl		
Water Loss:	in <sup>3</sup>	Gas Cushion Type:			
Resistivity:	ohm.m	Gas Cushion Pressure:	psig		
Salinity:	ppm				
Filter Cake:	inches				

## Recovery Information

Recovery Table

Length ft	Description	Volume bbl
1130.00	water with oil scum at top	4.369
0.00	Rw .171@42	0.000

Total Length: 1130.00 ft      Total Volume: 4.369 bbl

Num Fluid Samples: 0

Num Gas Bombs: 0

Serial #:

Laboratory Name:

Laboratory Location:

Recovery Comments:

