

DIAMOND TESTING, LLC
P.O. Box 157
HOISINGTON, KANSAS 67544
(620) 653-7550 • (800) 542-7313
MOORE1DST1

Company Knighton Oil Company, Inc. Lease & Well No. Moore No. 1
Elevation 1975 KB Formation Lansing Effective Pay _____ Ft. Ticket No. T448
Date 3-11-15 Sec. 14 Twp. 25S Range 14W County Stafford State Kansas
Test Approved By David D. Montague Diamond Representative Tim Venters

Formation Test No. 1 Interval Tested from 3,716 ft. to 3,835 ft. Total Depth 3,835 ft.
Packer Depth 3,711 ft. Size 6 3/4 in. Packer Depth _____ ft. Size _____ in.
Packer Depth 3,716 ft. Size 6 3/4 in. Packer Depth _____ ft. Size _____ in.
Depth of Selective Zone Set _____ ft.

Top Recorder Depth (Inside) 3,697 ft. Recorder Number 5504 Cap. 5,000 psi.
Bottom Recorder Depth (Outside) 3,832 ft. Recorder Number 11029 Cap. 5,025 psi.
Below Straddle Recorder Depth _____ ft. Recorder Number _____ Cap. _____ psi.

Drilling Contractor Fossil Drilling, Inc. - Rig 3 Drill Collar Length 248 ft I.D. 2 1/4 in.
Mud Type Chemical Viscosity 56 Weight Pipe Length _____ ft I.D. _____ in.
Weight 9.1 Water Loss 7.2 cc. Drill Pipe Length 3,435 ft I.D. 3 1/2 in.
Chlorides 4,800 P.P.M. Test Tool Length 33 ft Tool Size 3 1/2-IF in.
Jars: Make Sterling Serial Number 2 Anchor Length 24' perf. w/95' drill pipe Size 4 1/2-FH in.
Did Well Flow? No Reversed Out No Surface Choke Size 1 in. Bottom Choke Size 5/8 in.
Main Hole Size 7 7/8 in. Tool Joint Size 4 1/2-XH in.

Blow: 1st Open: Good, 2 in. blow increasing. Off bottom of bucket in 3 mins. 2 1/2 in. blow back during shut-in.
2nd Open: Weak, 1/2 in. blow increasing. Off bottom of bucket in 6 mins. 6 1/2 in. blow back during shut-in.

Recovered 515 ft. of gas in pipe
Recovered 240 ft. of slightly gas cut, oil & water cut mud = 3.415200 bbls. (Grind out: 2%-gas; 10%-oil; 27%-water; 61%-mud)
Recovered 320 ft. of gas & oil cut, heavy mud cut water = 4.553600 bbls. (Grind out: 6%-gas; 8%-oil; 51%-water; 35%-mud)
Recovered 370 ft. of mud cut water w/trace oil = 2.956220 bbls. (Grind out: Trace-oil; 92%-water; 8%-mud)
Recovered 930 ft. of TOTAL FLUID = 10.925020 bbls.
Recovered _____ ft. of _____

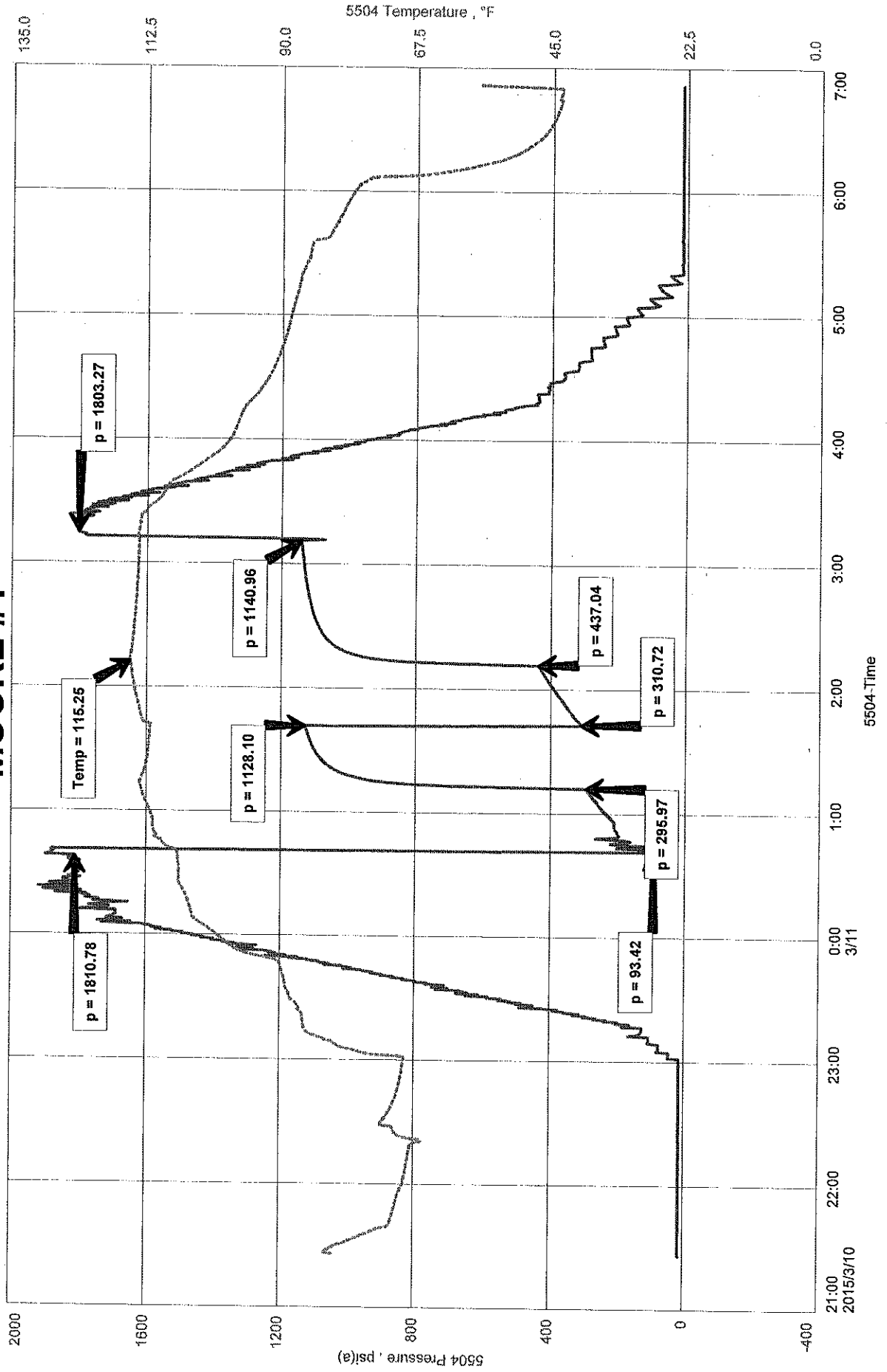
Remarks Tool Sample Grind Out: Trace-oil; 96%-water; 4%-mud (Chlorides: 89,000 Ppm PH: 5.5 RW: .14 @ 64°)

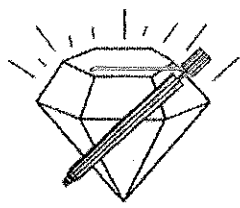
Time Set Packer(s) 12:41 A.M. Time Started off Bottom 3:11 A.M. Maximum Temperature 115°
Initial Hydrostatic Pressure.....(A) 1811 P.S.I.
Initial Flow Period.....Minutes 30 (B) 93 P.S.I. to (C) 296 P.S.I.
Initial Closed In Period.....Minutes 30 (D) 1128 P.S.I.
Final Flow Period.....Minutes 30 (E) 311 P.S.I. to (F) 437 P.S.I.
Final Closed In Period.....Minutes 60 (G) 1141 P.S.I.
Final Hydrostatic Pressure.....(H) 1803 P.S.I.

KNIGHTON OIL COMPANY, INC.
 DST #1, LANSING, 3716-3835
 Start Test Date: 2015/03/10
 Final Test Date: 2015/03/11

MOORE #1
 Formation: DST #1, LANSING, 3716-3835
 Pool: ALBANO WEST
 Job Number: T448

MOORE #1





DIAMOND TESTING, LLC
P.O. Box 157
HOISINGTON, KANSAS 67544
(620) 653-7550 • (800) 542-7313
MOORE1DST2

Company Knighton Oil Company, Inc. Lease & Well No. Moore No. 1
Elevation 1975 KB Formation Lansing/Kansas City (Hertha) Effective Pay Ft. Ticket No. T449
Date 3-11-15 Sec. 14 Twp. 25S Range 14W County Stafford State Kansas
Test Approved By David D. Montague Diamond Representative Tim Venters

Formation Test No. 2 Interval Tested from 3,928 ft. to 3,950 ft. Total Depth 3,950 ft.
Packer Depth 3,923 ft. Size 6 3/4 in. Packer Depth ft. Size in.
Packer Depth 3,928 ft. Size 6 3/4 in. Packer Depth ft. Size in.
Depth of Selective Zone Set ft.

Top Recorder Depth (Inside) 3,909 ft. Recorder Number 5504 Cap. 5,000 psi.
Bottom Recorder Depth (Outside) 3,947 ft. Recorder Number 11029 Cap. 5,025 psi.
Below Straddle Recorder Depth ft. Recorder Number Cap. psi.

Drilling Contractor Fossil Drilling, Inc. - Rig 3 Drill Collar Length 248 ft. I.D. 2 1/4 in.
Mud Type Chemical Viscosity 65 Weight Pipe Length ft. I.D. in.
Weight 9.2 Water Loss 8.8 cc. Drill Pipe Length 3,647 ft. I.D. 3 1/2 in.
Chlorides 7,000 P.P.M. Test Tool Length 33 ft. Tool Size 3 1/2-IF in.
Jars: Make Sterling Serial Number Not Run Anchor Length 22 ft. Size 4 1/2-FH in.
Did Well Flow? No Reversed Out No Surface Choke Size 1 in. Bottom Choke Size 5/8 in.
Main Hole Size 7 7/8 in. Tool Joint Size 4 1/2-XH in.

Blow: 1st Open: Weak, 1/2 in. blow increasing. Off bottom of bucket in 28 mins. No blow back during shut-in.
2nd Open: Weak, surface blow increasing. Off bottom of bucket in 34 mins. No blow back during shut-in.

Recovered 395 ft. of mud cut water = 3.870570 bbls. (Grind out: 90%-water; 10%-mud)
Recovered 60 ft. of heavy mud cut water = .295200 bbls. (Grind out: 53%-water; 47%-mud)
Recovered 455 ft. of TOTAL FLUID = 4.165770 bbls.
Recovered ft. of
Recovered ft. of
Recovered ft. of

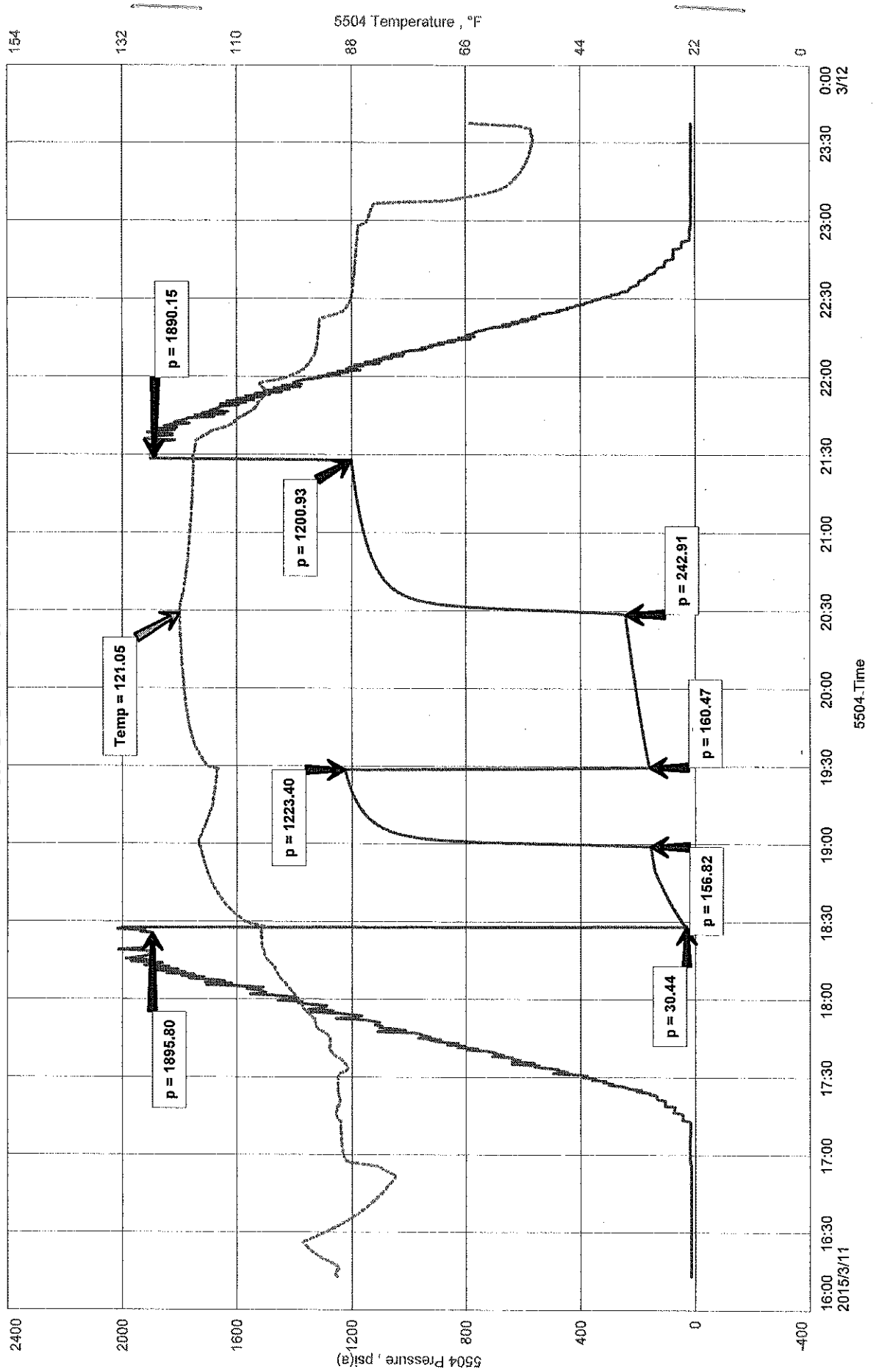
Remarks Tool Sample Grind Out: 99%-water; 1%-mud (Chlorides: 89,000 Ppm PH: 6.0 RW: .11 @ 67°)

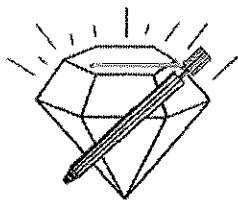
Time Set Packer(s) 6:28 P.M. Time Started off Bottom 9:28 P.M. Maximum Temperature 121°
Initial Hydrostatic Pressure.....(A) 1896 P.S.I.
Initial Flow Period.....Minutes 30 (B) 30 P.S.I. to (C) 157 P.S.I.
Initial Closed In Period.....Minutes 30 (D) 1223 P.S.I.
Final Flow Period.....Minutes 60 (E) 160 P.S.I. to (F) 243 P.S.I.
Final Closed In Period.....Minutes 60 (G) 1201 P.S.I.
Final Hydrostatic Pressure.....(H) 1890 P.S.I.

KNIGHTON OIL COMPANY, INC.
 DST #2, LKC (HERTHA), 3928-3950
 Start Test Date: 2015/03/11
 Final Test Date: 2015/03/11

MOORE #1
 Formation: DST #2, LKC (HERTHA), 3928-3950
 Pool: ALBANO WEST
 Job Number: T449

MOORE #1





DIAMOND TESTING, LLC
P.O. Box 157
HOISINGTON, KANSAS 67544
(620) 653-7550 • (800) 542-7313
MOORE1DST3

Company Knighton Oil Company, Inc. Lease & Well No. Moore No. 1
Elevation 1975 KB Formation Viola Effective Pay _____ Ft. Ticket No. T450
Date 3-12-15 Sec. 14 Twp. 25S Range 14W County Stafford State Kansas
Test Approved By David D. Montague Diamond Representative _____ Tim Venters

Formation Test No. 3 Interval Tested from 4,130 ft. to 4,155 ft. Total Depth 4,155 ft.
Packer Depth 4,125 ft. Size 6 3/4 in. Packer Depth _____ ft. Size _____ in.
Packer Depth 4,130 ft. Size 6 3/4 in. Packer Depth _____ ft. Size _____ in.
Depth of Selective Zone Set _____ ft.

Top Recorder Depth (Inside) 4,111 ft. Recorder Number 5504 Cap. 5,000 psi.
Bottom Recorder Depth (Outside) 4,152 ft. Recorder Number 11029 Cap. 5,025 psi.
Below Straddle Recorder Depth _____ ft. Recorder Number _____ Cap. _____ psi.

Drilling Contractor Fossil Drilling, Inc. - Rig 3 Drill Collar Length 248 ft I.D. 2 1/4 in.
Mud Type Chemical Viscosity 50 Weight Pipe Length _____ ft I.D. _____ in.
Weight 9.2 Water Loss 10.2 cc. Drill Pipe Length 3,849 ft I.D. 3 1/2 in.
Chlorides 7,200 P.P.M. Test Tool Length 33 ft Tool Size 3 1/2-IF in.
Jars: Make Sterling Serial Number 2 Anchor Length 25 ft. Size 4 1/2-FH in.
Did Well Flow? No Reversed Out No Surface Choke Size 1 in. Bottom Choke Size 5/8 in.
Main Hole Size 7 7/8 in. Tool Joint Size 4 1/2-XH in.

Blow: 1st Open: Strong, 2 1/2 in. blow increasing. Off bottom of bucket in 45 secs. Gas to surface in 25 mins. No blow back during shut-in. (SEE GAS VOLUME REPORT)
2nd Open: Very strong blow off bottom of bucket immediately. ? blow back during shut-in. (SEE GAS VOLUME REPORT)

Recovered 3,815 ft. of gas in pipe
Recovered 35 ft. of slightly gas cut, water & oil cut mud = .498050 bbls. (Grind out: 6%-gas; 14%-oil; 9%-water; 71%-mud)
Recovered 190 ft. of gas & mud cut, heavy oil cut water = .953420 bbls. (Grind out: 16%-gas; 32%-oil; 35%-water; 17%-mud)
Recovered 60 ft. of slightly oil cut, mud cut water = .295200 bbls. (Grind out: 4%-oil; 86%-water; 10%-mud)
Recovered 285 ft. of TOTAL FLUID = 1.746670 bbls. Chlorides: 68,000 Ppm PH: 6.0 RW: .17 @ 59°

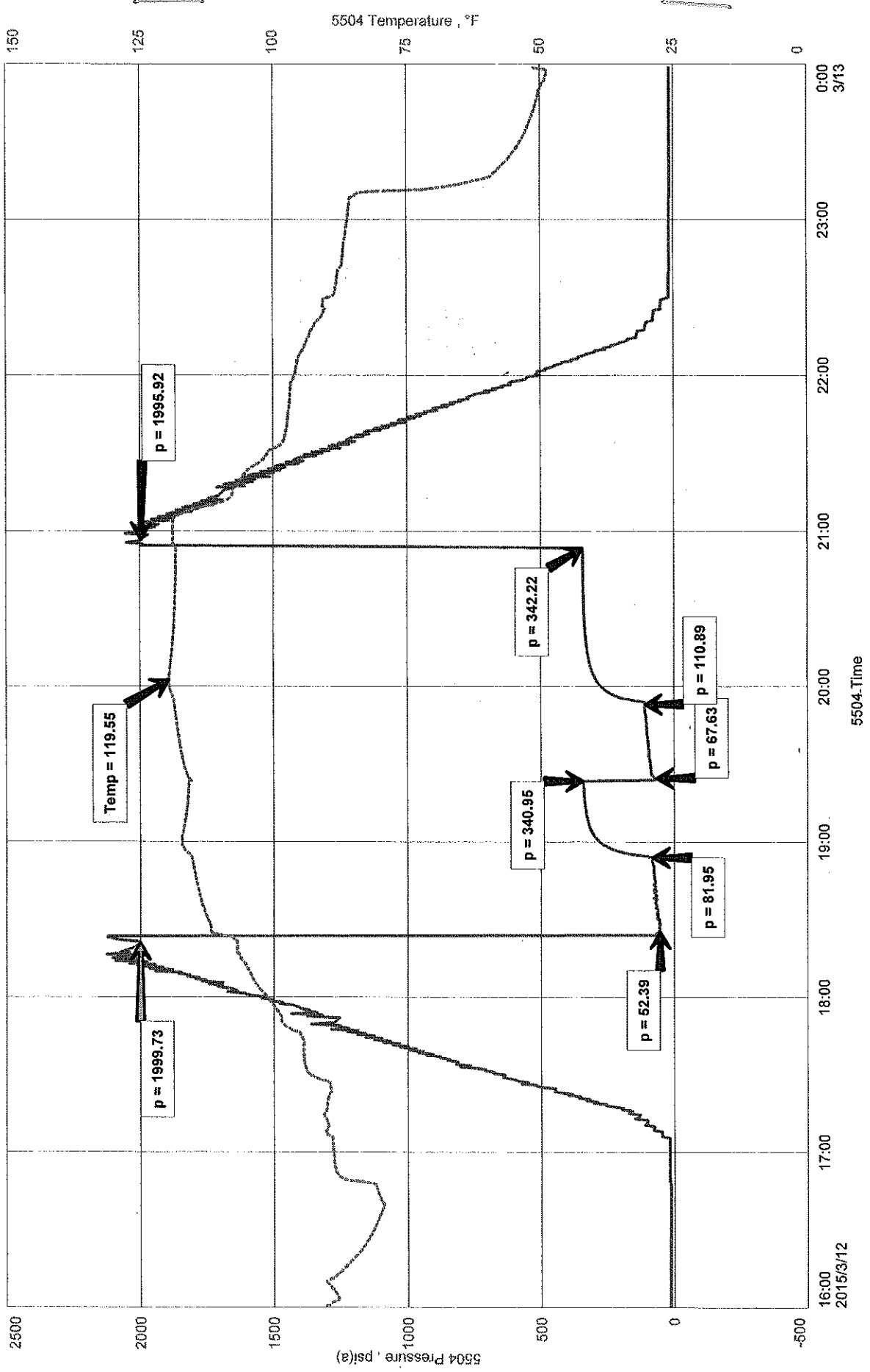
Recovered _____ ft. of _____
Remarks Tool Sample Grind Out: Gas blew out.
Needle valve broke opening it back up after final flow period so don't know if there was blow back.

Time Set Packer(s) 6:23 P.M. Time Started off Bottom 8:53 P.M. Maximum Temperature 120°
Initial Hydrostatic Pressure.....(A) 2000 P.S.I.
Initial Flow Period.....Minutes 30 (B) 52 P.S.I. to (C) 82 P.S.I.
Initial Closed In Period.....Minutes 30 (D) 341 P.S.I.
Final Flow Period.....Minutes 30 (E) 68 P.S.I. to (F) 111 P.S.I.
Final Closed In Period.....Minutes 60 (G) 342 P.S.I.
Final Hydrostatic Pressure.....(H) 1996 P.S.I.

KNIGHTON OIL COMPANY, INC.
DST #3, VIOLA, 4130-4155
Start Test Date: 2015/03/12
Final Test Date: 2015/03/12

MOORE #1
Formation: DST #3, VIOLA, 4130-4155
Pool: ALBANO WEST
Job Number: T450

MOORE #1



5504_Time