

HALLIBURTON

iCem[®] Service

HALLIBURTON ENERGY INSTITUTE

For:

Date: Saturday, February 14, 2015

TAPSTONE THOMAS 17-34-71H

TAPSTONE THOMAS 17-34-71H

Job Date: Friday, February 13, 2015

Sincerely,

RON YOUNGBLOOD

Legal Notice

Warning Disclaimer

Although the information contained in this report is based on sound engineering practices, the copyright owner(s) does (do) not accept any responsibility whatsoever, in negligence or otherwise, for any loss or damage arising from the possession or use of the report whether in terms of correctness or otherwise. The application, therefore, by the user of this report or any part thereof, is solely at the user's own risk.

Limitations of Liability

Except as expressly set forth herein, there are no representations or warranties by Halliburton, express or implied, including implied warranties of merchantability and/or fitness for a particular purpose. In no event will Halliburton or its suppliers be liable for consequential, incidental, special, punitive or exemplary damages (including, without limitation, loss of data, profits, use of hardware, or software). Customer accepts full responsibility for any investment made based on results from the Software. Any interpretations, analyses or modeling of any data, including, but not limited to Customer data, and any recommendation or decisions based upon such interpretations, analyses or modeling are opinions based upon inferences from measurements and empirical relationships and assumptions, which inferences and assumptions are not infallible, and with respect to which professional may differ. Accordingly, Halliburton cannot and does not warrant the accuracy, correctness or completeness of any such interpretation, recommendation, modeling or other products of the Software Product. As such, any interpretation, recommendation or modeling resulting from the Software for the purpose of any drilling, well treatment, production or financial decision will be at the sole risk of Customer. Under no circumstances will Halliburton or its suppliers be liable for any damages.

Table of Contents

Real-Time Job Summary
 Job Event Log.....
Attachments.....
 TAPSTONE THOMAS 17-34-71H-Custom Results.png.....
Custom Graphs.....
 Custom Graph.....

1.0 Real-Time Job Summary

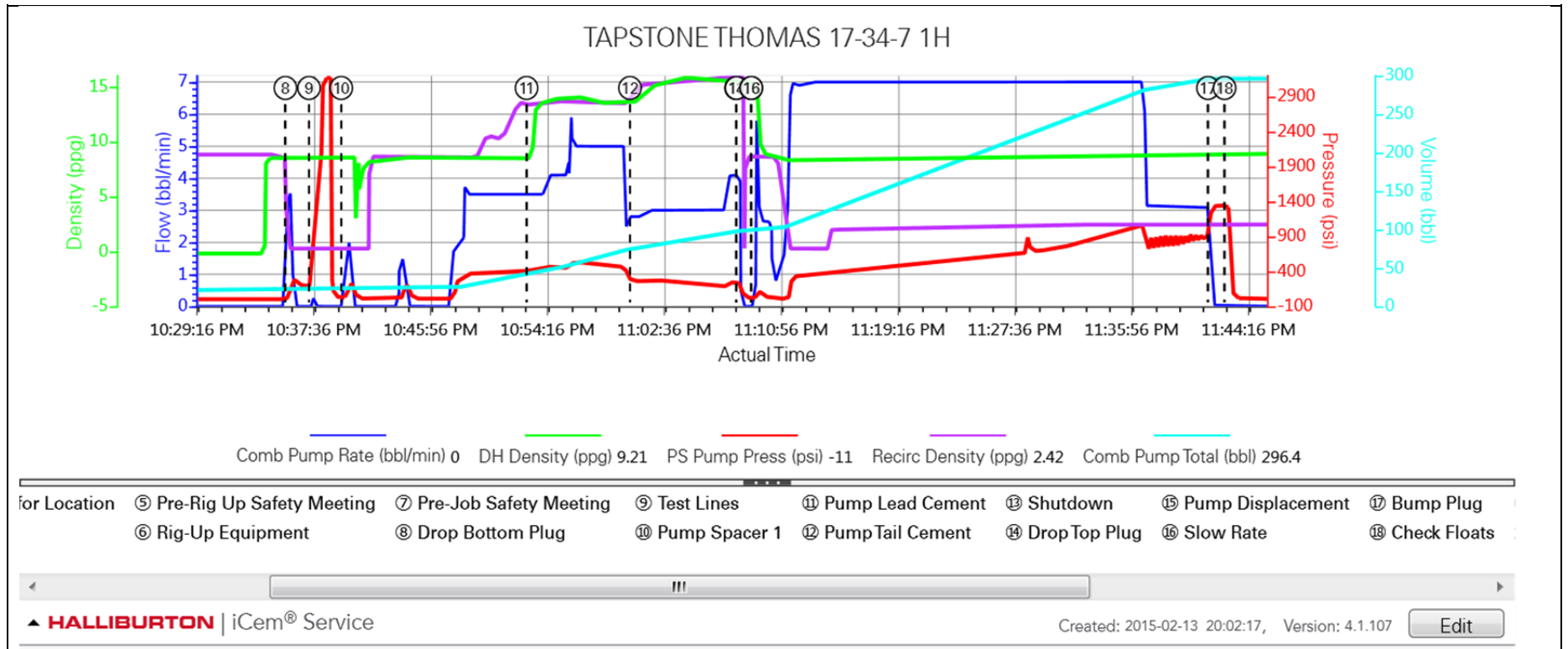
1.1 Job Event Log

Type	Seq. No.	Activity	Graph Label	Date	Time	Source	Comb Pump Rate <i>(bbl/min)</i>	DH Density <i>(ppg)</i>	PS Pump Press <i>(psi)</i>	Recirc Density <i>(ppg)</i>	Comb Pump Total <i>(bbl)</i>	Comments
Event	1	Call Out	Call Out	2/13/2015	13:30:00	USER						
Event	2	Pre-Convoy Safety Meeting	Pre-Convoy Safety Meeting	2/13/2015	16:00:00	USER						travel in convoy use journey mgt
Event	3	Depart Home for Location	Depart Home for Location	2/13/2015	16:30:00	USER						
Event	4	Arrive At Loc	Arrive At Loc	2/13/2015	19:00:00	USER						requested on loc @ 1930 meet with company rep
Event	5	Pre-Rig Up Safety Meeting	Pre-Rig Up Safety Meeting	2/13/2015	19:30:00	USER						discussed pinch points
Event	6	Rig-Up Equipment	Rig-Up Equipment	2/13/2015	20:00:00	USER						rig up cement equipment wait on crew to finish running casing
Event	7	Pre-Job Safety Meeting	Pre-Job Safety Meeting	2/13/2015	21:45:00	USER	0.00	-0.09	7.00	8.82	21.0	discussed job procedures and HSE safety standards
Event	8	Drop Bottom Plug	Drop Bottom Plug	2/13/2015	22:35:47	USER	3.50	8.46	52.00	0.27	21.8	plug left head
Event	9	Test Lines	Test Lines	2/13/2015	22:37:28	COM5	0.00	8.57	195.00	0.27	22.7	good test
Event	10	Pump Spacer 1	Pump Spacer 1	2/13/2015	22:39:46	COM5	0.80	8.62	23.00	0.27	22.7	pump 10 bbls mud flush III @ 2 bpm @ 300 psi
Event	11	Pump Lead Cement	Pump Lead Cement	2/13/2015	22:52:59	COM5	3.50	8.46	411.00	13.39	42.7	pump 36 bbls lead scaled @ 13.6 ppg @ 5 bpm
Event	12	Pump Tail Cement	Pump Tail Cement	2/13/2015	23:00:22	COM5	2.80	13.60	266.00	14.49	75.1	pump 19 bbl tail cement scaled @ 15.6 ppg @ 4 bpm
Event	13	Shutdown	Shutdown	2/13/2015	23:07:56	USER	4.10	15.49	238.00	15.92	98.5	
Event	14	Drop Top Plug	Drop Top Plug	2/13/2015	23:07:58	USER	2.60	15.53	215.00	15.92	98.7	plug left head

Event	15	Pump Displacement	Pump Displacement	2/13/2015	23:09:00	COM5	0.00	15.46	16.00	8.66	98.7	pump 199 bbls water displacement @ 7 bpm
Event	16	Slow Rate	Slow Rate	2/13/2015	23:09:01	USER	0.00	15.47	16.00	8.66	98.7	@ 180 bbls gone slow rate to 3 bpm
Event	17	Bump Plug	Bump Plug	2/13/2015	23:41:35	COM5	0.10	8.92	1306.00	2.46	296.4	bump @ 860 psi went up to 1344 psi
Event	18	Check Floats	Check Floats	2/13/2015	23:42:46	USER	0.00	8.84	1333.00	2.46	296.4	floats held 1 bbl back
Event	19	Pre-Rig Down Safety Meeting	Pre-Rig Down Safety Meeting	2/14/2015	00:01:00	USER	0.00	8.93	-1.00	2.44	296.4	discussed suspended loads
Event	20	Rig-Down Equipment	Rig-Down Equipment	2/14/2015	00:10:00	USER	0.00	8.98	-2.00	2.44	296.4	
Event	21	Safety Meeting - Departing Location	Safety Meeting - Departing Location	2/14/2015	00:40:00	USER	0.00	9.25	-12.00	2.42	296.4	inform on call coordinator job is complete
Event	22	Depart Location for Service Center or Other Site	Depart Location for Service Center or Other Site	2/14/2015	00:50:00	USER						

2.0 Attachments

2.1 TAPSTONE THOMAS 17-34-71H-Custom Results.png



3.0 Custom Graphs

3.1 Custom Graph

