

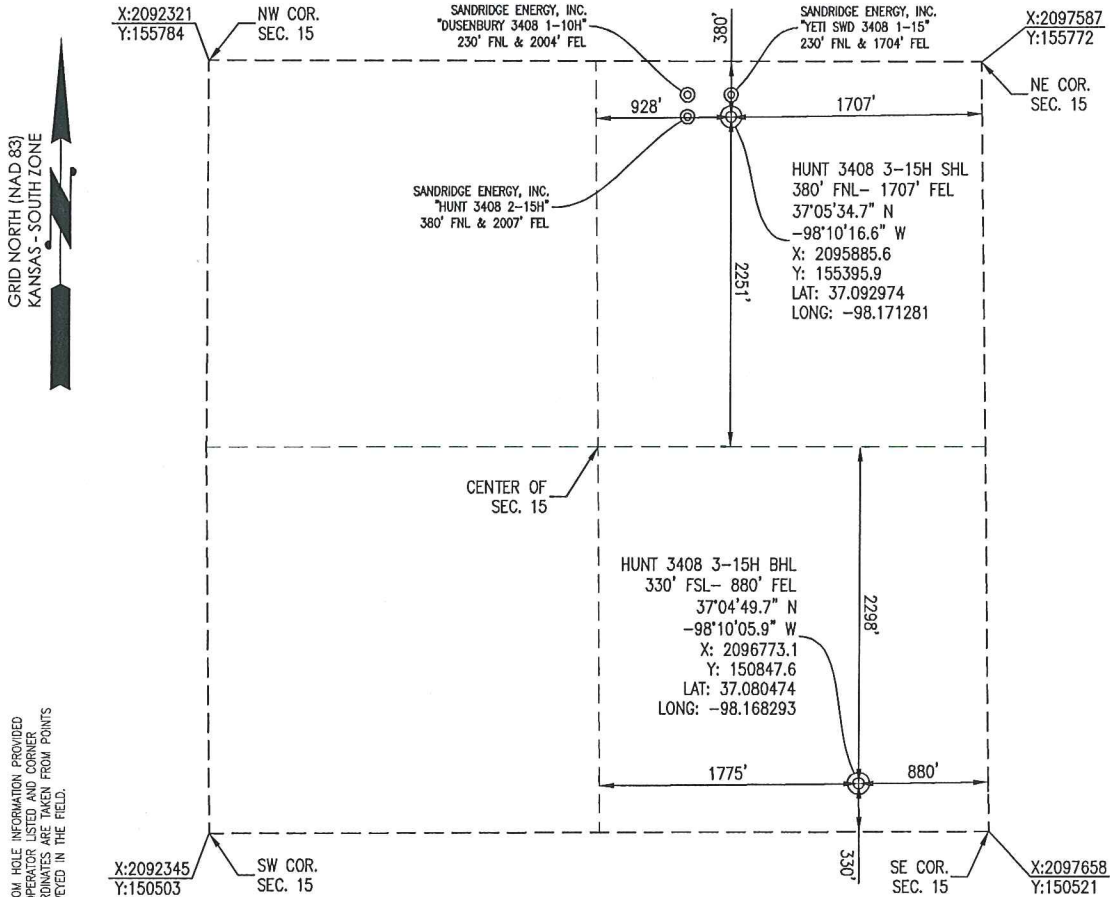


1000 LedgeLawn Drive
 Conway, Arkansas 72034
 501.328.3316 f 501.328.3325 f
 www.craftontull.com

Crafton Tull
 SURVEYING

HARPER COUNTY, KANSAS

380' FNL-1707' FEL SECTION 15 TOWNSHIP 34S RANGE 08W 6TH P.M.



BOTTOM HOLE INFORMATION PROVIDED BY OPERATOR LISTED AND CORNER COORDINATES ARE TAKEN FROM POINTS SURVEYED IN THE FIELD.

ELEVATION:
 1388' GR. AT STAKE

OPERATOR: SANDRIDGE ENERGY, INC.

WELL NO: 3-15H

LEASE NAME: HUNT 3408

TOPOGRAPHIC & VEGETATION: LOCATION FELL IN A FIELD

GOOD DRILL SITE: YES REFERENCE STAKES OR ALTERNATE LOCATION STAKES SET: NONE

BEST ACCESSIBILITY TO LOCATION: NORTH LINE

DISTANCE & DIRECTION
 FROM HWY JCT OR TOWN: FROM THE JCT. OF OK-2 & SW 70 AVE (±7.5 MILES WEST OF ANTHONY, KS) TRAVEL SOUTH ON SW 70 AVE FOR ±4.0 MILES TO THE NORTHEAST CORNER OF SECTION 15, T34S-R08W.

(THE FOLLOWING INFORMATION WAS GATHERED USING A GPS RECEIVER ACCURACY ±2-3 METERS)

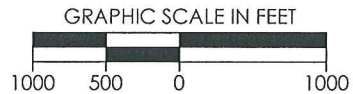
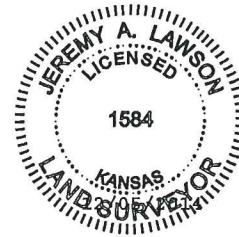
GPS DATUM: NAD-27
 LAT: 37.092974
 LONG: -98.171281

STATE PLANE COORDINATES:
 ZONE: KS-SOUTH NAD-27
 X: 2095885.6
 Y: 155395.9

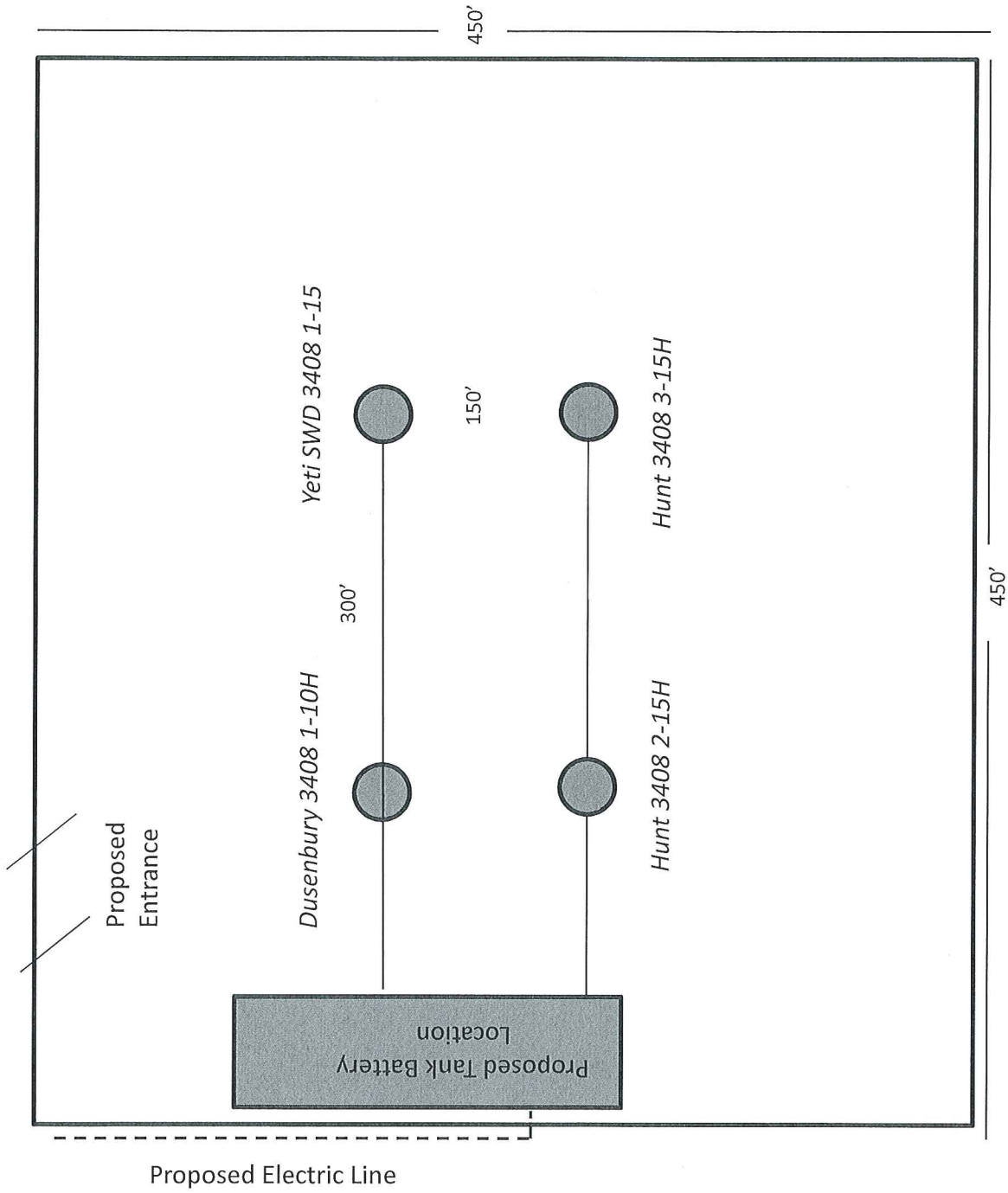
DATE STAKED: 12-05-2014

GENERAL NOTES:

THE TIES AND FOOTAGES SHOWN ON THIS PLAT ARE FROM LINES OF OCCUPATION FROM A SURVEY MADE ON THE GROUND AND / OR BEARING AND DISTANCES FROM THE GENERAL LAND OFFICE PLAT OF THE AREA SHOWN AND MAY NOT BE THE ACTUAL PROPERTY CORNERS. THIS PLAT DOES NOT REPRESENT A TRUE BOUNDARY SURVEY. DRILL SITE CONDITION DETERMINATIONS WERE MADE BY SANDRIDGE ENERGY INC. REPRESENTATIVES.



REVISION	SandRidge		
	"HUNT 3408 3-15H" PART OF THE NE1/4 OF SECTION 15, T-34-S, R-08-W PROPOSED DRILL SITE HARPER COUNTY, KANSAS		
	SCALE: 1" = 1000'	PLOT DATE: 12-05-2014	DRAWN BY: MF SHEET NO.: 1 OF 4



Hunt 3408 3-15H

Harper County

Unit Description:

All of 15-34S-8W

Surface Owner:

SandRidge Expl. and Prod., LLC

123 Robert S Kerr Ave

Oklahoma City, OK 73102

