



DRILL STEM TEST REPORT

Prepared For: **Murfin Drilling Co., Inc.**

250 N. Water STE 300
Wichita, KS 67202

ATTN: Keith Reavis

Verna #1-26

26/1s/36w Rawlins,KS

Start Date: 2015.01.17 @ 22:45:05

End Date: 2015.01.18 @ 08:08:00

Job Ticket #: 60846 DST #: 1

Trilobite Testing, Inc
1515 Commerce Parkway Hays, KS 67601
ph: 785-625-4778 fax: 785-625-5620

Printed: 2015.01.21 @ 14:01:54



**TRILOBITE
TESTING, INC**

DRILL STEM TEST REPORT

Murfin Drilling Co., Inc.
250 N. Water STE 300
Wichita, KS 67202
ATTN: Keith Reavis

26/1s/36w Rawlins,KS

Verna #1-26

Job Ticket: 60846

DST#: 1

Test Start: 2015.01.17 @ 22:45:05

GENERAL INFORMATION:

Formation: **LKC "A - D"**
 Deviated: No Whipstock: ft (KB)
 Time Tool Opened: 01:10:30
 Time Test Ended: 08:08:00
 Interval: **4174.00 ft (KB) To 4313.00 ft (KB) (TVD)**
 Total Depth: 4313.00 ft (KB) (TVD)
 Hole Diameter: 7.88 inches Hole Condition: Fair
 Test Type: Conventional Bottom Hole (Initial)
 Tester: James Winder
 Unit No: 83
 Reference Elevations: 3304.00 ft (KB)
 3299.00 ft (CF)
 KB to GR/CF: 5.00 ft

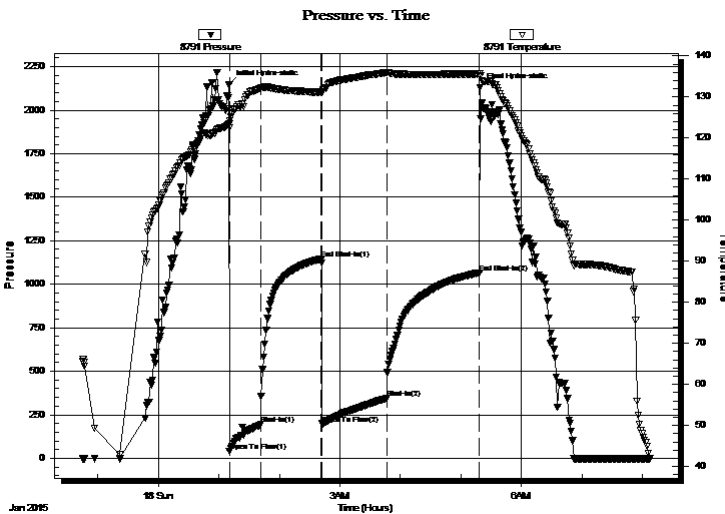
Serial #: 8791

Inside

Press@RunDepth: 344.32 psig @ 4175.00 ft (KB) Capacity: 8000.00 psig
 Start Date: 2015.01.17 End Date: 2015.01.18 Last Calib.: 2015.01.18
 Start Time: 22:45:05 End Time: 08:08:00 Time On Btm: 2015.01.18 @ 01:10:15
 Time Off Btm: 2015.01.18 @ 05:18:59

TEST COMMENT: 30 - IF: Surging blow built to BOB (11") at 11 min. (Diesel in bucket)
 60 - IS!: No blow back
 60 - FF: Blow built to BOB at 13 3/4 min.
 90 - FS!: Blow back built to 1/2"

PRESSURE SUMMARY



Time (Min.)	Pressure (psig)	Temp (deg F)	Annotation
0	2145.43	123.52	Initial Hydro-static
1	39.45	122.51	Open To Flow (1)
32	194.31	132.13	Shut-In(1)
92	1146.45	131.16	End Shut-In(1)
93	197.93	131.13	Open To Flow (2)
157	344.32	135.91	Shut-In(2)
248	1066.18	135.59	End Shut-In(2)
249	2130.09	134.95	Final Hydro-static

Recovery

Length (ft)	Description	Volume (bbl)
186.00	MCW w/trace oil 68%w , 32%m	0.91
382.00	SO/WCM 64%m, 27%w , 7%g, 2%o	5.36
125.00	SOCM 92%m, 7%o, 1%g	1.75
5.00	SMCO 91%o, 4%m, 5%g	0.07

Gas Rates

	Choke (inches)	Pressure (psig)	Gas Rate (Mcf/d)



**TRILOBITE
TESTING, INC**

DRILL STEM TEST REPORT

TOOL DIAGRAM

Murfin Drilling Co., Inc.

26/1s/36w Rawlins,KS

250 N. Water STE 300
Wichita, KS 67202

Verna #1-26

Job Ticket: 60846

DST#: 1

ATTN: Keith Reavis

Test Start: 2015.01.17 @ 22:45:05

Tool Information

Drill Pipe:	Length: 3994.00 ft	Diameter: 3.80 inches	Volume: 56.03 bbl	Tool Weight: 2500.00 lb
Heavy Wt. Pipe:	Length: 0.00 ft	Diameter: 0.00 inches	Volume: 0.00 bbl	Weight set on Packer: 25000.00 lb
Drill Collar:	Length: 186.00 ft	Diameter: 2.25 inches	Volume: 0.91 bbl	Weight to Pull Loose: 65000.00 lb
			<u>Total Volume: 56.94 bbl</u>	Tool Chased 0.00 ft
Drill Pipe Above KB:	34.00 ft			String Weight: Initial 57000.00 lb
Depth to Top Packer:	4174.00 ft			Final 59000.00 lb
Depth to Bottom Packer:	ft			
Interval between Packers:	139.00 ft			
Tool Length:	167.00 ft			
Number of Packers:	2	Diameter: 6.75 inches		

Tool Comments:

Tool Description

Tool Description	Length (ft)	Serial No.	Position	Depth (ft)	Accum. Lengths
Shut In Tool	5.00			4151.00	
Hydraulic tool	5.00			4156.00	
Jars	5.00			4161.00	
Safety Joint	3.00			4164.00	
Packer	5.00			4169.00	28.00 Bottom Of Top Packer
Packer	5.00			4174.00	
Stubb	1.00			4175.00	
Recorder	0.00	8791	Inside	4175.00	
Recorder	0.00	8366	Outside	4175.00	
Perforations	5.00			4180.00	
Blank Spacing	128.00			4308.00	
Perforations	2.00			4310.00	
Bullnose	3.00			4313.00	139.00 Bottom Packers & Anchor

Total Tool Length: 167.00



**TRILOBITE
TESTING, INC**

DRILL STEM TEST REPORT

FLUID SUMMARY

Murfin Drilling Co., Inc.

26/1s/36w Rawlins,KS

250 N. Water STE 300
Wichita, KS 67202

Verna #1-26

Job Ticket: 60846

DST#: 1

ATTN: Keith Reavis

Test Start: 2015.01.17 @ 22:45:05

Mud and Cushion Information

Mud Type: Gel Chem
Mud Weight: 9.00 lb/gal
Viscosity: 59.00 sec/qt
Water Loss: 7.96 in³
Resistivity: ohm.m
Salinity: 600.00 ppm
Filter Cake: 2.00 inches

Cushion Type:
Cushion Length: ft
Cushion Volume: bbl
Gas Cushion Type:
Gas Cushion Pressure: psig

Oil API: 20 deg API
Water Salinity: 21000 ppm

Recovery Information

Recovery Table

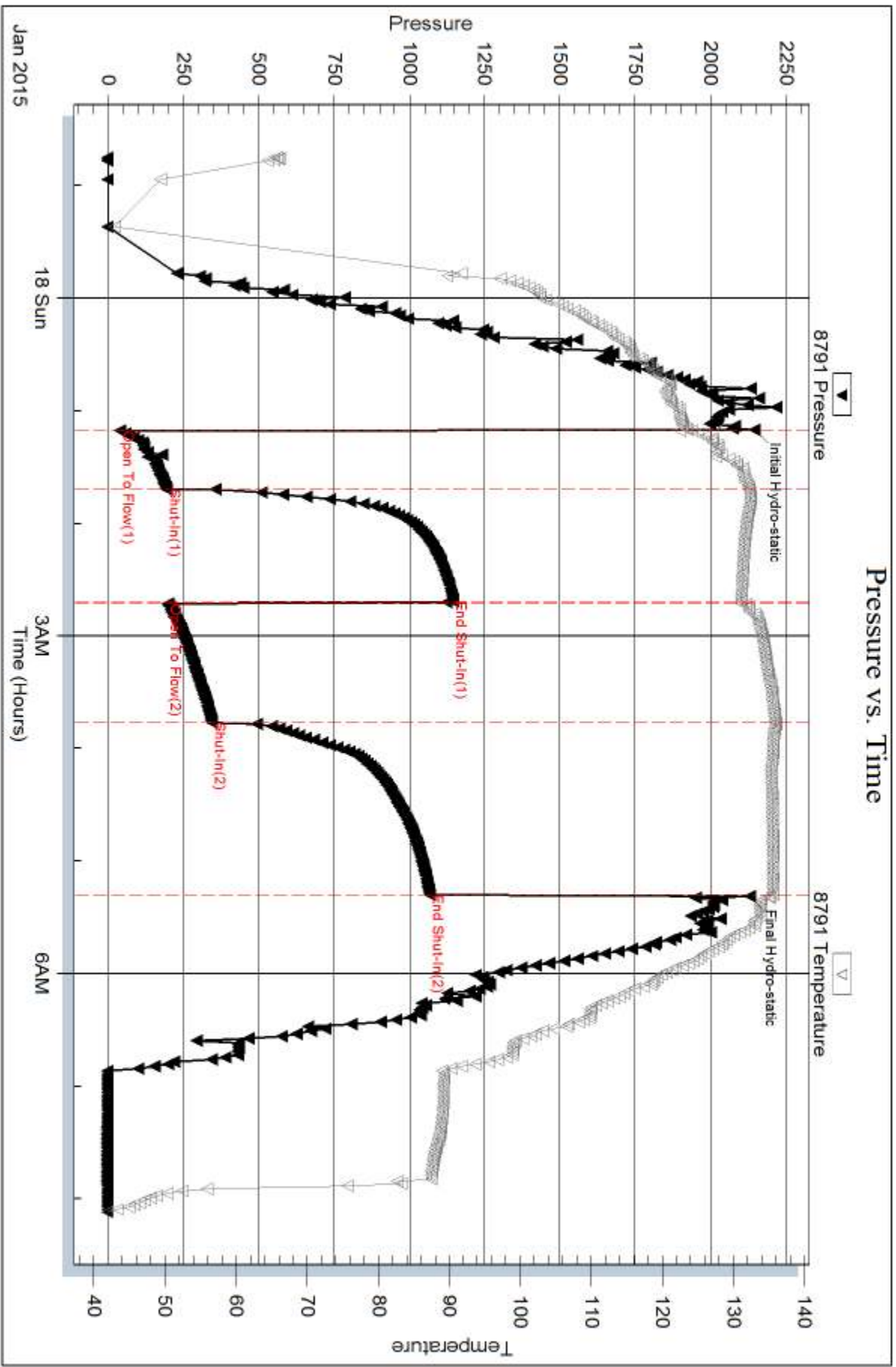
Length ft	Description	Volume bbl
186.00	MCW w /trace oil 68%w , 32%m	0.915
382.00	SO/WCM 64%m, 27%w , 7%g, 2%o	5.358
125.00	SOCM 92%m, 7%o, 1%g	1.753
5.00	SMCO 91%o, 4%m, 5%g	0.070

Total Length: 698.00 ft Total Volume: 8.096 bbl

Num Fluid Samples: 0 Num Gas Bombs: 0 Serial #:

Laboratory Name: Laboratory Location:

Recovery Comments: Gravity = 21 api @ 70 deg F Corrected Gravity = 20 api
RW = .399 ohms @ 57.3 deg F

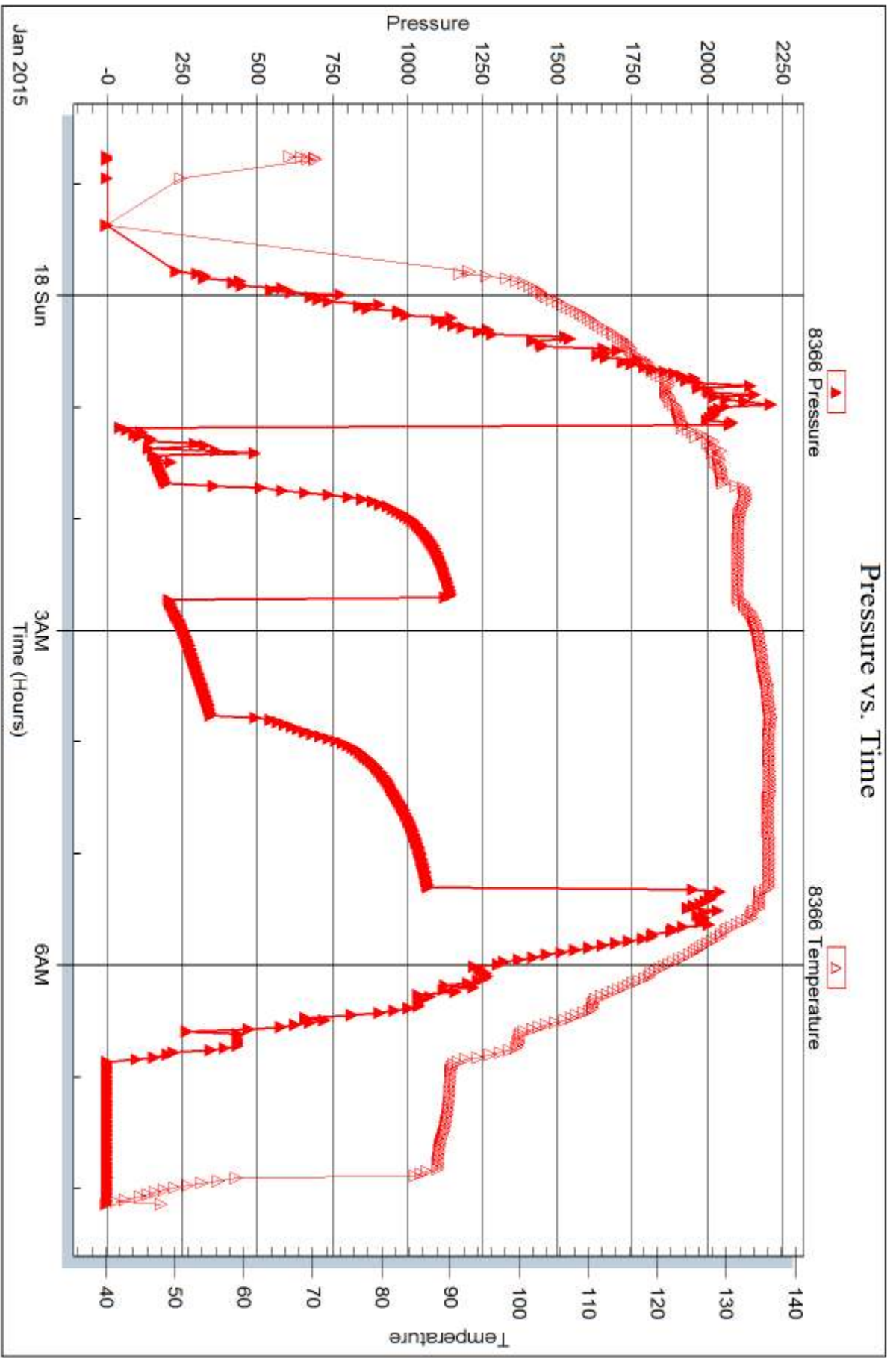


Serial #: 8366

Outside Murfin Drilling Co., Inc.

Verna #1-26

DST Test Number: 1



Trilobite Testing, Inc

Ref. No: 60846

Printed: 2015.01.21 @ 14:01:55



DRILL STEM TEST REPORT

Prepared For: **Murfin Drilling Co., Inc.**

250 N. Water STE 300
Wichita, KS 67202

ATTN: Keith Reavis

Verna #1-26

26/1s/36w Rawlins,KS

Start Date: 2015.01.18 @ 17:37:00

End Date: 2015.01.19 @ 01:07:45

Job Ticket #: 60847 DST #: 2

Trilobite Testing, Inc
1515 Commerce Parkway Hays, KS 67601
ph: 785-625-4778 fax: 785-625-5620

Printed: 2015.01.21 @ 14:01:35



**TRILOBITE
TESTING, INC**

DRILL STEM TEST REPORT

Murfin Drilling Co., Inc.

26/1s/36w Rawlins,KS

250 N. Water STE 300
Wichita, KS 67202

Verna #1-26

Job Ticket: 60847

DST#: 2

ATTN: Keith Reavis

Test Start: 2015.01.18 @ 17:37:00

GENERAL INFORMATION:

Formation: **LKC "G"**

Deviated: No Whipstock: ft (KB)

Time Tool Opened: 19:42:30

Time Test Ended: 01:07:45

Test Type: Conventional Bottom Hole (Reset)

Tester: James Winder

Unit No: 83

Interval: 4314.00 ft (KB) To 4375.00 ft (KB) (TVD)

Reference Elevations: 3304.00 ft (KB)

Total Depth: 4375.00 ft (KB) (TVD)

3299.00 ft (CF)

Hole Diameter: 7.88 inches Hole Condition: Fair

KB to GR/CF: 5.00 ft

Serial #: 8791

Inside

Press@RunDepth: 19.89 psig @ 4315.00 ft (KB)

Capacity: 8000.00 psig

Start Date: 2015.01.18

End Date:

2015.01.19

Last Calib.:

2015.01.19

Start Time:

17:37:05

End Time:

01:07:44

Time On Btm:

2015.01.18 @ 19:42:15

Time Off Btm:

2015.01.18 @ 22:48:15

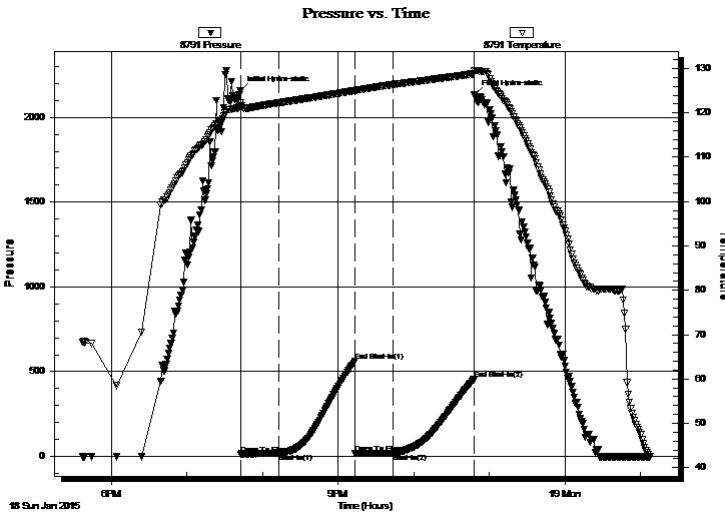
TEST COMMENT: 30 - IF: 1/4" Blow at open, built to 1/2", died back, dead at 22 min. (Diesel in bucket)

60 - IS: No blow

30 - FF: No blow

60 - FS: No blow

PRESSURE SUMMARY



Time (Min.)	Pressure (psig)	Temp (deg F)	Annotation
0	2159.48	122.37	Initial Hydro-static
1	13.13	121.31	Open To Flow (1)
31	16.80	122.25	Shut-In(1)
91	560.23	125.03	End Shut-In(1)
92	17.78	124.80	Open To Flow (2)
121	19.89	126.38	Shut-In(2)
186	453.31	128.80	End Shut-In(2)
186	2136.26	129.59	Final Hydro-static

Recovery

Length (ft)	Description	Volume (bbl)
5.00	Mud w /trace of oil 100%m	0.02

Gas Rates

Choke (inches)	Pressure (psig)	Gas Rate (Mcf/d)

* Recovery from multiple tests



**TRILOBITE
TESTING, INC**

DRILL STEM TEST REPORT

TOOL DIAGRAM

Murfin Drilling Co., Inc.

26/1s/36w Rawlins,KS

250 N. Water STE 300
Wichita, KS 67202

Verna #1-26

Job Ticket: 60847

DST#: 2

ATTN: Keith Reavis

Test Start: 2015.01.18 @ 17:37:00

Tool Information

Drill Pipe:	Length: 4120.00 ft	Diameter: 3.80 inches	Volume: 57.79 bbl	Tool Weight: 2500.00 lb
Heavy Wt. Pipe:	Length: 0.00 ft	Diameter: 0.00 inches	Volume: 0.00 bbl	Weight set on Packer: 25000.00 lb
Drill Collar:	Length: 186.00 ft	Diameter: 2.25 inches	Volume: 0.91 bbl	Weight to Pull Loose: 74000.00 lb
			<u>Total Volume: 58.70 bbl</u>	Tool Chased 0.00 ft
Drill Pipe Above KB:	20.00 ft			String Weight: Initial 57000.00 lb
Depth to Top Packer:	4314.00 ft			Final 57000.00 lb
Depth to Bottom Packer:	ft			
Interval between Packers:	61.00 ft			
Tool Length:	89.00 ft			
Number of Packers:	2	Diameter: 6.75 inches		

Tool Comments:

Tool Description	Length (ft)	Serial No.	Position	Depth (ft)	Accum. Lengths
------------------	-------------	------------	----------	------------	----------------

Shut In Tool	5.00			4291.00	
Hydraulic tool	5.00			4296.00	
Jars	5.00			4301.00	
Safety Joint	3.00			4304.00	
Packer	5.00			4309.00	28.00 Bottom Of Top Packer
Packer	5.00			4314.00	
Stubb	1.00			4315.00	
Recorder	0.00	8791	Inside	4315.00	
Recorder	0.00	8366	Outside	4315.00	
Perforations	21.00			4336.00	
Blank Spacing	34.00			4370.00	
Perforations	2.00			4372.00	
Bullnose	3.00			4375.00	61.00 Bottom Packers & Anchor

Total Tool Length: 89.00



**TRILOBITE
TESTING, INC**

DRILL STEM TEST REPORT

FLUID SUMMARY

Murfin Drilling Co., Inc.

26/1s/36w Rawlins,KS

250 N. Water STE 300
Wichita, KS 67202

Verna #1-26

Job Ticket: 60847

DST#: 2

ATTN: Keith Reavis

Test Start: 2015.01.18 @ 17:37:00

Mud and Cushion Information

Mud Type: Gel Chem

Cushion Type:

Oil API:

deg API

Mud Weight: 9.00 lb/gal

Cushion Length:

ft

Water Salinity:

ppm

Viscosity: 62.00 sec/qt

Cushion Volume:

bbbl

Water Loss: 7.95 in³

Gas Cushion Type:

Resistivity: ohm.m

Gas Cushion Pressure:

psig

Salinity: 900.00 ppm

Filter Cake: 2.00 inches

Recovery Information

Recovery Table

Length ft	Description	Volume bbl
5.00	Mud w /trace of oil 100%m	0.025

Total Length: 5.00 ft Total Volume: 0.025 bbl

Num Fluid Samples: 0

Num Gas Bombs: 0

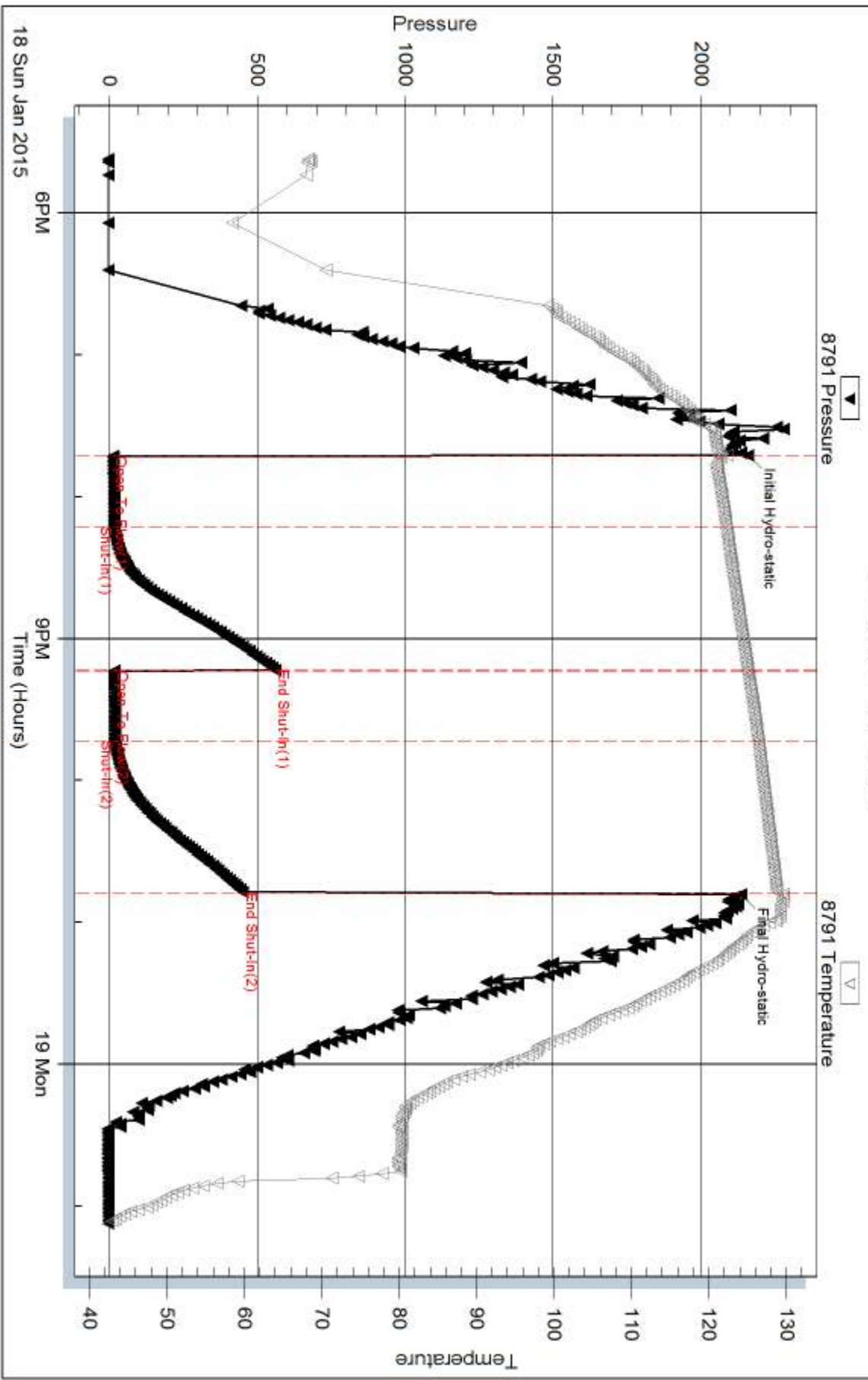
Serial #:

Laboratory Name:

Laboratory Location:

Recovery Comments:

Pressure vs. Time

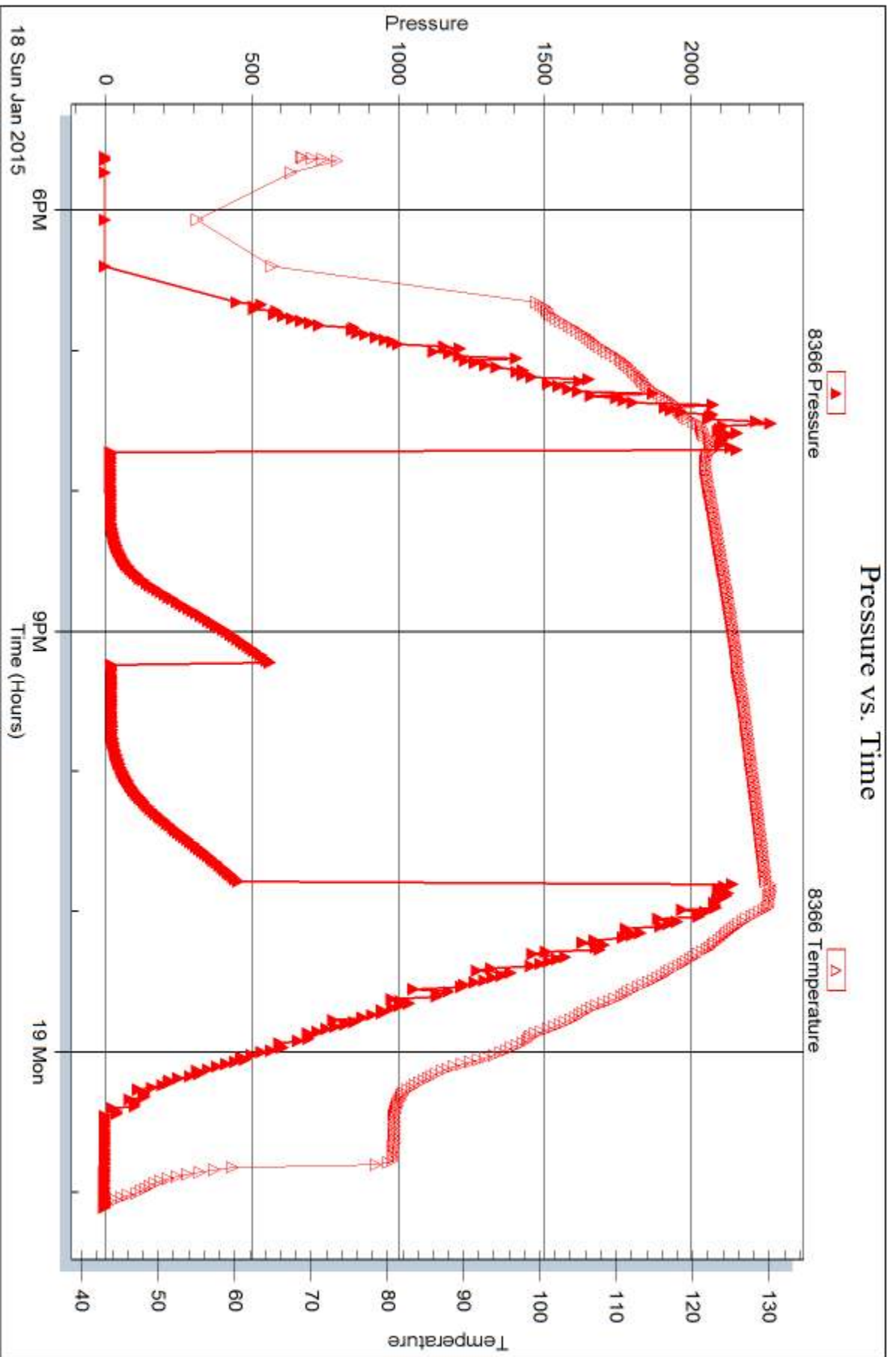


Serial #: 8366

Outside Murfin Drilling Co., Inc.

Verna #1-26

DST Test Number: 2



Trilobite Testing, Inc

Ref. No: 60847

Printed: 2015.01.21 @ 14:01:36



DRILL STEM TEST REPORT

Prepared For: **Murfin Drilling Co., Inc.**

250 N. Water STE 300
Wichita, KS 67202

ATTN: Keith Reavis

Verna #1-26

26/1s/36w Rawlins,KS

Start Date: 2015.01.19 @ 15:43:00

End Date: 2015.01.19 @ 22:38:15

Job Ticket #: 60848 DST #: 3

Trilobite Testing, Inc
1515 Commerce Parkway Hays, KS 67601
ph: 785-625-4778 fax: 785-625-5620

Printed: 2015.01.21 @ 14:00:48



TRILOBITE TESTING, INC

DRILL STEM TEST REPORT

Murfin Drilling Co., Inc.

26/1s/36w Rawlins, KS

250 N. Water STE 300
Wichita, KS 67202

Verna #1-26

Job Ticket: 60848

DST#: 3

ATTN: Keith Reavis

Test Start: 2015.01.19 @ 15:43:00

GENERAL INFORMATION:

Formation: **LKC "J - K"**

Deviated: No Whipstock: ft (KB)

Time Tool Opened: 17:39:15

Time Test Ended: 22:38:15

Test Type: Conventional Bottom Hole (Reset)

Tester: James Winder

Unit No: 83

Interval: 4413.00 ft (KB) To 4499.00 ft (KB) (TVD)

Total Depth: 4499.00 ft (KB) (TVD)

Hole Diameter: 7.88 inches Hole Condition: Fair

Reference Elevations: 3304.00 ft (KB)

3299.00 ft (CF)

KB to GR/CF: 5.00 ft

Serial #: 8791

Inside

Press@RunDepth: 32.01 psig @ 4414.00 ft (KB)

Start Date: 2015.01.19

End Date: 2015.01.19

Start Time: 15:43:05

End Time: 22:38:14

Capacity: 8000.00 psig

Last Calib.: 2015.01.19

Time On Btm: 2015.01.19 @ 17:38:45

Time Off Btm: 2015.01.19 @ 20:43:15

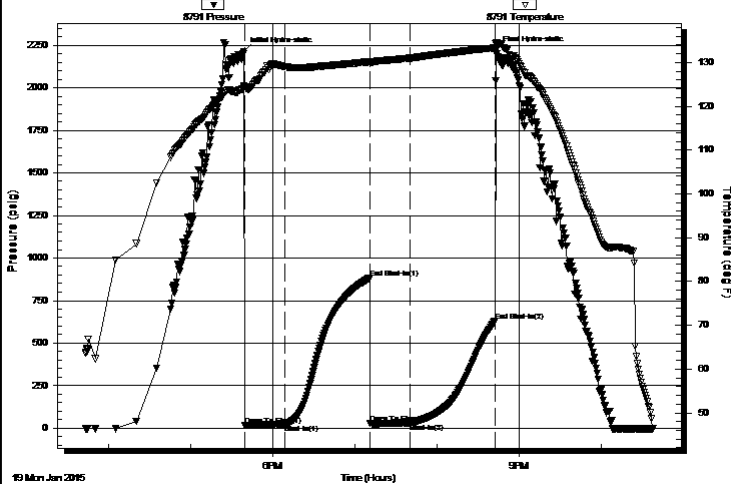
TEST COMMENT: 30 - IF: 1/4" Blow at open, built to 1 1/2" (Diesel in bucket)

60 - IS: No blow back

30 - FF: No blow

60 - FS: No blow

Pressure vs. Time



PRESSURE SUMMARY

Time (Min.)	Pressure (psig)	Temp (deg F)	Annotation
0	2213.23	124.61	Initial Hydro-static
1	15.80	124.44	Open To Flow (1)
31	23.28	129.03	Shut-In(1)
92	882.65	130.18	End Shut-In(1)
93	27.85	129.90	Open To Flow (2)
122	32.01	130.99	Shut-In(2)
184	628.11	133.31	End Shut-In(2)
185	2219.71	134.60	Final Hydro-static

Recovery

Length (ft)	Description	Volume (bbl)
40.00	OCM 85% m, 10% o, 5% g	0.20
2.00	Free Oil 100%	0.01

Gas Rates

	Choke (inches)	Pressure (psig)	Gas Rate (Mcf/d)

* Recovery from multiple tests



**TRILOBITE
TESTING, INC**

DRILL STEM TEST REPORT

TOOL DIAGRAM

Murfin Drilling Co., Inc.

26/1s/36w Rawlins,KS

250 N. Water STE 300
Wichita, KS 67202

Verna #1-26

Job Ticket: 60848

DST#: 3

ATTN: Keith Reavis

Test Start: 2015.01.19 @ 15:43:00

Tool Information

Drill Pipe:	Length: 4213.00 ft	Diameter: 3.80 inches	Volume: 59.10 bbl	Tool Weight: 2500.00 lb
Heavy Wt. Pipe:	Length: 0.00 ft	Diameter: 0.00 inches	Volume: 0.00 bbl	Weight set on Packer: 25000.00 lb
Drill Collar:	Length: 186.00 ft	Diameter: 2.25 inches	Volume: 0.91 bbl	Weight to Pull Loose: 60000.00 lb
			<u>Total Volume: 60.01 bbl</u>	Tool Chased 0.00 ft
Drill Pipe Above KB:	14.00 ft			String Weight: Initial 56000.00 lb
Depth to Top Packer:	4413.00 ft			Final 56000.00 lb
Depth to Bottom Packer:	ft			
Interval between Packers:	86.00 ft			
Tool Length:	114.00 ft			
Number of Packers:	2	Diameter: 6.75 inches		

Tool Comments:

Tool Description

Tool Description	Length (ft)	Serial No.	Position	Depth (ft)	Accum. Lengths
Shut In Tool	5.00			4390.00	
Hydraulic tool	5.00			4395.00	
Jars	5.00			4400.00	
Safety Joint	3.00			4403.00	
Packer	5.00			4408.00	28.00 Bottom Of Top Packer
Packer	5.00			4413.00	
Stubb	1.00			4414.00	
Recorder	0.00	8791	Inside	4414.00	
Recorder	0.00	8366	Outside	4414.00	
Perforations	15.00			4429.00	
Blank Spacing	65.00			4494.00	
Perforations	2.00			4496.00	
Bullnose	3.00			4499.00	86.00 Bottom Packers & Anchor

Total Tool Length: 114.00



**TRILOBITE
TESTING, INC**

DRILL STEM TEST REPORT

FLUID SUMMARY

Murfin Drilling Co., Inc.

26/1s/36w Rawlins,KS

250 N. Water STE 300
Wichita, KS 67202

Verna #1-26

Job Ticket: 60848

DST#: 3

ATTN: Keith Reavis

Test Start: 2015.01.19 @ 15:43:00

Mud and Cushion Information

Mud Type: Gel Chem
Mud Weight: 9.00 lb/gal
Viscosity: 56.00 sec/qt
Water Loss: 7.19 in³
Resistivity: ohm.m
Salinity: 1000.00 ppm
Filter Cake: 2.00 inches

Cushion Type:
Cushion Length: ft
Cushion Volume: bbl
Gas Cushion Type:
Gas Cushion Pressure: psig

Oil API: deg API
Water Salinity: ppm

Recovery Information

Recovery Table

Length ft	Description	Volume bbl
40.00	OCM 85% _m , 10% _o , 5% _g	0.197
2.00	Free Oil 100%	0.010

Total Length: 42.00 ft Total Volume: 0.207 bbl

Num Fluid Samples: 0

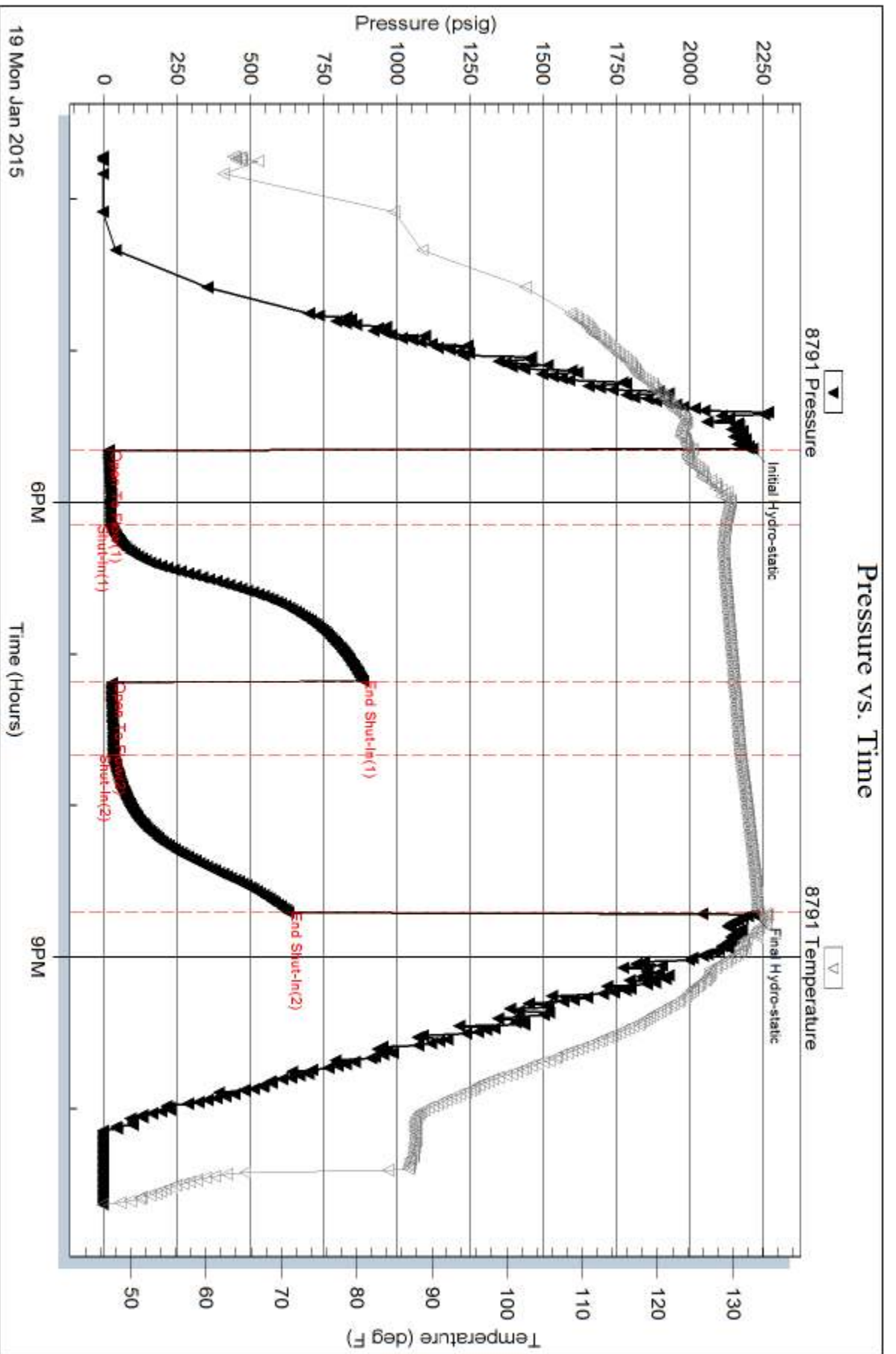
Num Gas Bombs: 0

Serial #:

Laboratory Name:

Laboratory Location:

Recovery Comments:

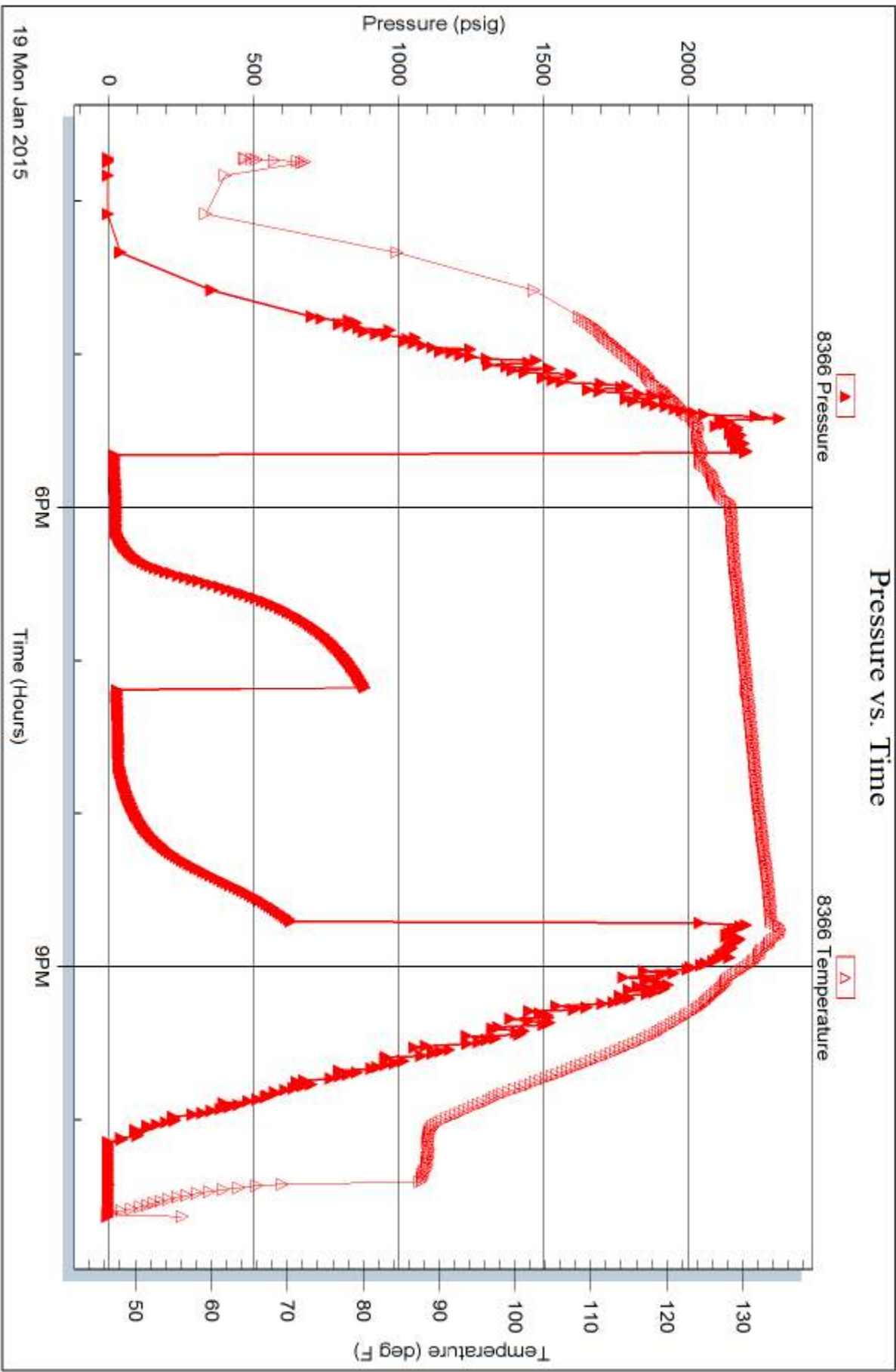


Serial #: 8366

Outside Murfin Drilling Co., Inc.

Vena #1-26

DST Test Number: 3



Trilobite Testing, Inc

Ref. No: 60848

Printed: 2015.01.21 @ 14:00:50



TRILOBITE TESTING INC.

1515 Commerce Parkway • Hays, Kansas 67601

Test Ticket

NO. 60846

Well Name & No. Verna # 1-26 Test No. 1 Date 1-17-15
 Company Murfin Drilling Co. Inc. Elevation 3304 KB 3299 GL
 Address 250 N. Water STE 300 Wichita, KS 67202
 Co. Rep / Geo. Keith Reavis Rig Murfin #7
 Location: Sec. 26 Twp. 15 Rge. 36w Co. Rawlins State KS

Interval Tested 4174 - 4313 Zone Tested LKC "A-D"
 Anchor Length 139 Drill Pipe Run 3994 Mud Wt. 9.3
 Top Packer Depth 4169 Drill Collars Run 186 Vis 59
 Bottom Packer Depth 4174 Wt. Pipe Run - WL 8.0
 Total Depth 4313 Chlorides 600 ppm System LCM 9

Blow Description IF: Surging blow built to BOB (11") at 11 min. (Diesel in bucket)
ISI: No blowback
FF: Blow built to BOB at 13 3/4 min.
FSI: Blowback built to 1/2"

Rec	Feet of	%gas	%oil	%water	%mud
<u>5</u>	<u>smco</u>	<u>5</u>	<u>91</u>	<u>-</u>	<u>4</u>
<u>125</u>	<u>50cm</u>	<u>1</u>	<u>7</u>	<u>-</u>	<u>92</u>
<u>382</u>	<u>50/wcm</u>	<u>7</u>	<u>2</u>	<u>27</u>	<u>64</u>
<u>186</u>	<u>mcw w/trace of oil</u>	<u>%gas</u>	<u>trace</u>	<u>68</u>	<u>32</u>

Rec Total 698 BHT 136 Gravity 20 API RW .399 @ 57.3 °F Chlorides 21,000 ppm

(A) Initial Hydrostatic 2145 Test 1150 T-On Location 21:30
 (B) First Initial Flow 39 Jars 250 T-Started 22:45
 (C) First Final Flow 194 Safety Joint 75 T-Open 1:10
 (D) Initial Shut-In 1146 Circ Sub _____ T-Pulled 5:18
 (E) Second Initial Flow 198 Hourly Standby _____ T-Out 8:00
 (F) Second Final Flow 344 Mileage 110 RT 110 Comments _____
 (G) Final Shut-In 1066 Sampler _____
 (H) Final Hydrostatic 2130 Straddle _____ Ruined Shale Packer _____
 Shale Packer _____ Ruined Packer _____
 Extra Packer _____ Extra Copies _____
 Initial Open 30 Extra Recorder _____ Sub Total 0
 Initial Shut-In 60 Day Standby _____ Total 1585
 Final Flow 60 Accessibility _____ MP/DST Disc't _____
 Final Shut-In 90 Sub Total 1585

Approved By Keith Reavis Our Representative James Winder

Trilobite Testing Inc. shall not be liable for damaged of any kind of the property or personnel of the one for whom a test is made, or for any loss suffered or sustained, directly or indirectly, through the use of its equipment, or its statements or opinion concerning the results of any test, tools lost or damaged in the hole shall be paid for at cost by the party for whom the test is made.



TRILOBITE TESTING INC.

1515 Commerce Parkway • Hays, Kansas 67601

Test Ticket

NO. **60847**

4/10

Well Name & No. Verna #1-26 Test No. 2 Date 1-18-15
 Company Murfin Drilling Co. Inc. Elevation 3304 KB 3299 GL
 Address 250 N. Water STE 300 Wichita, KS 67202
 Co. Rep / Geo. Keith Reavis Rig Murfin #7
 Location: Sec. 26 Twp. 1s Rge. 36w Co. Rawlins State KS

Interval Tested 4314 - 4375 Zone Tested LKC "G"
 Anchor Length 61 Drill Pipe Run 4120 Mud Wt. 9.4
 Top Packer Depth 4309 Drill Collars Run 186 Vis 62
 Bottom Packer Depth 4314 Wt. Pipe Run - WL 8.0
 Total Depth 4375 Chlorides 900 ppm System LCM 8

Blow Description IF: 1/4" Blow at open, built to 1/2", died back, dead at 22min. (Diesel in bucket)
ISI: No blow
FF: No blow
FSI: No blow

Rec	Feet of	%gas	%oil	%water	%mud
<u>5</u>	<u>Mud w/trace of oil</u>	<u>trace</u>		<u>100</u>	
Rec	Feet of	%gas	%oil	%water	%mud
Rec	Feet of	%gas	%oil	%water	%mud
Rec	Feet of	%gas	%oil	%water	%mud
Rec	Feet of	%gas	%oil	%water	%mud

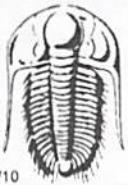
Rec Total 5 BHT 129 Gravity _____ API RW _____ @ _____ °F Chlorides _____ ppm

(A) Initial Hydrostatic <u>2159</u>	<input checked="" type="checkbox"/> Test <u>1150</u>	T-On Location <u>17:15 1/18</u>
(B) First Initial Flow <u>13</u>	<input checked="" type="checkbox"/> Jars <u>250</u>	T-Started <u>17:37</u>
(C) First Final Flow <u>17</u>	<input checked="" type="checkbox"/> Safety Joint <u>75</u>	T-Open <u>19:42</u>
(D) Initial Shut-In <u>560</u>	<input type="checkbox"/> Circ Sub _____	T-Pulled <u>22:47</u>
(E) Second Initial Flow <u>18</u>	<input type="checkbox"/> Hourly Standby _____	T-Out <u>1:00 1/19</u>
(F) Second Final Flow <u>20</u>	<input checked="" type="checkbox"/> Mileage <u>110RT</u> 110	Comments _____
(G) Final Shut-In <u>453</u>	<input type="checkbox"/> Sampler _____	<input type="checkbox"/> Ruined Shale Packer _____
(H) Final Hydrostatic <u>2136</u>	<input type="checkbox"/> Straddle _____	<input type="checkbox"/> Ruined Packer _____
Initial Open <u>30</u>	<input type="checkbox"/> Shale Packer _____	<input type="checkbox"/> Extra Copies _____
Initial Shut-In <u>60</u>	<input type="checkbox"/> Extra Packer _____	Sub Total <u>0</u>
Final Flow <u>30</u>	<input type="checkbox"/> Extra Recorder _____	Total <u>1585</u>
Final Shut-In <u>60</u>	<input type="checkbox"/> Day Standby _____	MP/DST Disc't _____
	<input type="checkbox"/> Accessibility _____	
	Sub Total <u>1585</u>	

Approved By _____

Our Representative James Winder

Trilobite Testing Inc. shall not be liable for damaged of any kind of the property or personnel of the one for whom a test is made, or for any loss suffered or sustained, directly or indirectly, through the use of its equipment, or its statements or opinion concerning the results of any test, tools lost or damaged in the hole shall be paid for at cost by the party for whom the test is made.



TRILOBITE TESTING INC.

1515 Commerce Parkway • Hays, Kansas 67601

Test Ticket

NO. 60848

Well Name & No. Verna #1-26 Test No. 3 Date 1-19-15
 Company Murfin Drilling Co. Inc. Elevation 3304 KB 3299 GL
 Address 250 N. Water STE 300 Wichita, KS 67202
 Co. Rep / Geo. Keith Reavis Rig Murfin #7
 Location: Sec. 26 Twp. 1s Rge. 36w Co. Rawlins State KS

Interval Tested 4413 - 4499 Zone Tested LKC "J-K"
 Anchor Length 86 Drill Pipe Run 4213 Mud Wt. 9.1
 Top Packer Depth 4408 Drill Collars Run 186 Vis 56
 Bottom Packer Depth 4413 Wt. Pipe Run - WL 7.2
 Total Depth 4499 Chlorides 1000 ppm System LCM 8

Blow Description IF: Blow built to 1 1/2" (Diesel in bucket)
ISI: No blowback
FF: No blow
FSI: No blow

Rec	Feet of	%gas	%oil	%water	%mud
<u>2</u>	<u>Free oil</u>	<u>100</u>			
<u>40</u>	<u>OCM</u>	<u>5</u>	<u>10</u>		<u>85</u>
Rec	Feet of	%gas	%oil	%water	%mud
Rec	Feet of	%gas	%oil	%water	%mud
Rec	Feet of	%gas	%oil	%water	%mud

Rec Total 42 BHT 133 Gravity - API RW - @ - °F Chlorides - ppm

(A) Initial Hydrostatic <u>2213</u>	<input checked="" type="checkbox"/> Test <u>1150</u>	T-On Location <u>14:45</u>
(B) First Initial Flow <u>16</u>	<input checked="" type="checkbox"/> Jars <u>250</u>	T-Started <u>15:43</u>
(C) First Final Flow <u>23</u>	<input checked="" type="checkbox"/> Safety Joint <u>75</u>	T-Open <u>17:39</u>
(D) Initial Shut-In <u>883</u>	<input type="checkbox"/> Circ Sub	T-Pulled <u>20:42</u>
(E) Second Initial Flow <u>28</u>	<input type="checkbox"/> Hourly Standby	T-Out <u>22:30</u>
(F) Second Final Flow <u>32</u>	<input checked="" type="checkbox"/> Mileage <u>110RT</u> 110	Comments
(G) Final Shut-In <u>628</u>	<input type="checkbox"/> Sampler	
(H) Final Hydrostatic <u>2220</u>	<input type="checkbox"/> Straddle	<input type="checkbox"/> Ruined Shale Packer
	<input type="checkbox"/> Shale Packer	<input type="checkbox"/> Ruined Packer
Initial Open <u>30</u>	<input type="checkbox"/> Extra Packer	<input type="checkbox"/> Extra Copies
Initial Shut-In <u>60</u>	<input type="checkbox"/> Extra Recorder	Sub Total <u>0</u>
Final Flow <u>30</u>	<input type="checkbox"/> Day Standby	Total <u>1585</u>
Final Shut-In <u>60</u>	<input type="checkbox"/> Accessibility	MP/DST Disc't
	Sub Total <u>1585</u>	

Approved By _____ Our Representative Jamae Winder

Trilobite Testing Inc. shall not be liable for damaged of any kind of the property or personnel of the one for whom a test is made, or for any loss suffered or sustained, directly or indirectly, through the use of its equipment, or its statements or opinion concerning the results of any test, tools lost or damaged in the hole shall be paid for at cost by the party for whom the test is made.