

MERIT ENERGY COMPANY

CURRENT WELLBORE

LEASE & WELL NO. HANKE B-4
 FIELD NAME CHURCHMAN-BIBLE/LAHEY
 LOCATION 14-31S-35W 1980' FNL & 2080' FEL

FORMER NAME _____
 COUNTY & STATE STEVENS CO, KS
 API NO. 15-189-21989

K.B. ELEV. 2985'
 D.F. ELEV. _____
 G.L. ELEV. 2975'

SURFACE CASING

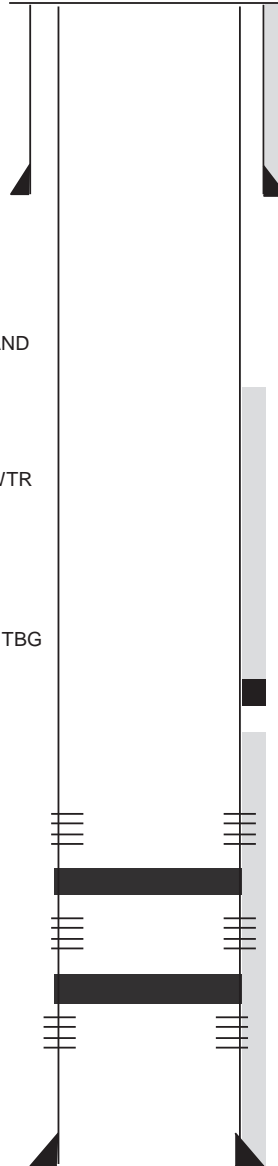
SIZE 8 5/8" WEIGHT 24.# DEPTH 1738'
 GRADE K-55 SX. CMT. 495 sx CMT _____

WELL HISTORY

9/5/95 SPUD WELL. SET SURF CSG @ 1738'
 9/16/95 SET CSG @ 5763' w/ 205 SX CMT.
 9/18/95 RECOMMENDED PERFS - 5592-5615 LOWER CHESTER 'N' SAND
 KANSAS CITY 'A'(4640-4668, 4651-4653) HAD GAS SHOW
 9/26/1995 OPEN F.O. TOOL @ 3304. PUMP 65 SX CMT. SET PKR @ 5514
 PERF 5592-5615 @ 2 SPF. ACIDIZE w/ 2000 GAL 7.5%
 REC 1/4 BWPH
 10/3/1995 FRAC w/ 35,658 GALS 40# BORATE X-LINKED GELD 2% KCL WTR
 w/ 130,300# 20/40 SND.
 10/18/1995 26 HR TEST - 100 BOPD & 38 BWPD & 25 MCFD. BHP-816#
 9/17/96 FISH ROD PART @ 4975'
 8/30/01 CHANGE POLISH ROD LINER AND ALIGN PUMPING UNIT
 12/23/2004 PROD TEST - 3 BO, 27 BW
 7/27/05 HOT OIL 40 BBLS HOT OIL DWN TBG. TOOH HYDROTESTING TBG
 TIH AND RIH w/ RODS.

OTHER FORMATION TOPS

LANSING 4,142
 KANSAS CITY 4,640
 MARMATON 4,826
 MORROW 5,358
 CHESTER 5,538



TOC @ 2380' CBL
 FO TOOL @ 3304(65 SX MIDCON)
 TOC @ above 4200' CBL

Lansing
 4420-32
CIBP w/2sx @ 4900'
Marmaton
 4949-56 4960-64
CIBP w/2sx @ 5555'
LOWER CHESTER 'N'
 5592-5615 (2 SPF)

LONGSTRING

SIZE 5 1/2" WEIGHT 15.5# DEPTH 5763'
 GRADE K-55 SX. CMT. 205 sx TOC 5540'

PBTD@ _____
 TD@ 5770'

RECOMMENDATION