



Scale 1:240 (5"=100') Imperial
Measured Depth Log

Well Name: Jennie 1-24
API: 15-055-22366
Location: 24-T26S-R34W
License Number:
Spud Date: 12/15/2014
Surface Coordinates:

Region: Wildcat
Drilling Completed: 12/30/2014

Bottom Hole
Coordinates:
Ground Elevation (ft): 2932.7
Logged Interval (ft): 3800
Formation:
Type of Drilling Fluid: Mud

To: 5260
K.B. Elevation (ft): 2945
Total Depth (ft): 5260

Printed by MUD.LOG from WellSight Systems 1-800-447-1534 www.WellSight.com

OPERATOR

Company: Berexco
Address:

GEOLOGIST

Name: Wade Condict
Company: Berexco LLC
Address:

DST's Report

DST #1 (MARM 'B') 4549-4582
15-30-60-120
IF: WSB BUILT TO 3/4"
FF: WSB BUILT TO 1 1/2"
SIP 142/191#
REC 5' G&OCM (4%G, 96%M W/THIN SCUM OIL)

DST #2 (CHST) 5065-5147 W/STR PKR
75-60-60-120
SIP 1302/1326
REC 310' GOCM (2% G, 34% O, 64% M), 90' VSOSGM (10%G, 90% M W/ THIN SCUM OIL)

ROCK TYPES

- Anhy
- Bent
- Brec
- Cht
- Clyst
- Coal
- Congl
- Dol

- Gyp
- Igne
- Lmst
- Meta
- Mrlst
- Salt
- Shale
- Shcol

- Shgy
- Slstst
- Ss
- Till
- Carb sh
- Dol
- Dtd
- Gry sh

- Sandylms
- Shale
- Slststn
- Shlyslts
- Sitysh
- Lms

ACCESSORIES

MINERAL

- Anhy
- Arggrn
- Arg
- Bent
- Bit
- Brecfrag
- Calc
- Carb
- Chtdk
- Chtlt
- Dol
- Feldspar
- Ferrpel
- Ferr
- Glau
- Gyp
- Hvymin
- Kaol
- Marl
- Minxl
- Nodule
- Phos
- Pyr

- Salt
- Sandy
- Silt
- Sil
- Sulphur
- Tuff
- Chlorite
- Dol
- Sand
- Sltly

FOSSIL

- Algae
- Amph
- Belm
- Bioclst
- Brach
- Bryozoa
- Cephal
- Coral
- Crin
- Echin
- Fish
- Foram

- Fossil
- Gastro
- Oolite
- Ostra
- Pelec
- Pellet
- Pisolite
- Plant
- Strom
- Fuss
- Oomold

STRINGER

- Anhy
- Arg
- Bent
- Coal
- Dol
- Gyp
- Ls
- Mrst
- Slststrg
- Ssstrg
- Carbsh

- Clystn
- Dol
- Grysh
- Gryslt
- Lms
- Sandylms
- Sh
- Slststn

TEXTURE

- Boundst
- Chalky
- Cryxln
- Earthy
- Finexln
- Grainst
- Lithogr
- Microxln
- Mudst
- Packst
- Wackest

OTHER SYMBOLS

POROSITY TYPE

- Earthy
- Fenest
- Fracture
- Inter
- Moldic
- Organic
- Pinpoint
- Vuggy

SORTING

- Well
- Moderate
- Poor

ROUNDING

- Rounded
- Subrnd
- Subang

- Angular

OIL SHOWS

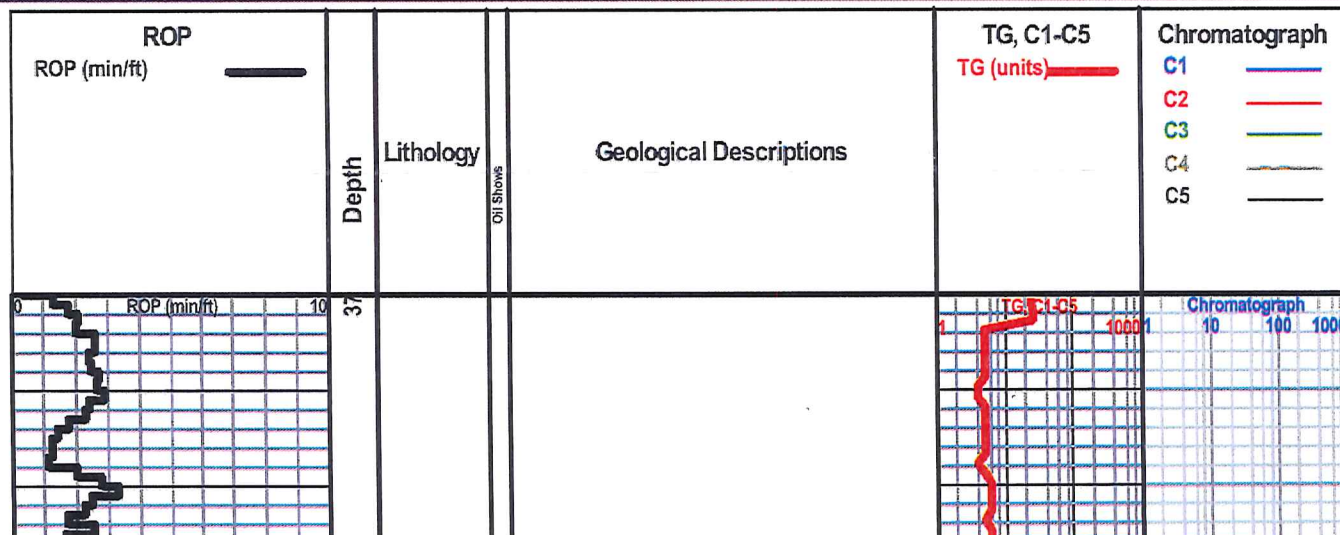
- Even
- Spotted
- Ques
- Dead
- Gas show

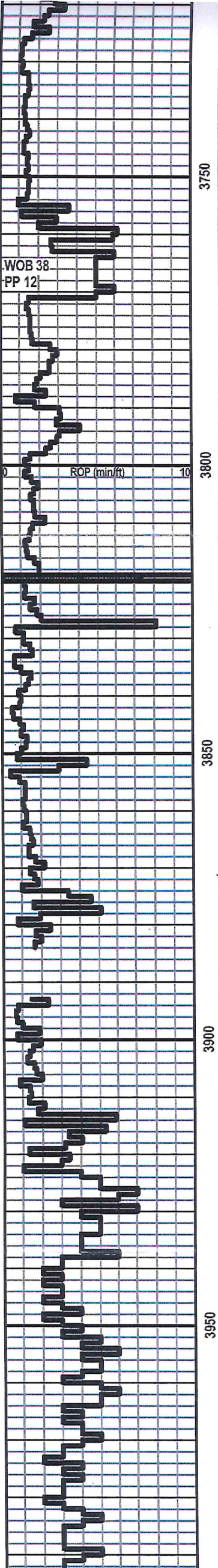
INTERVALS

- Core
- Dst
- Dst

EVENTS

- Rft
- Sidewall





BEGIN SAMPLE CATCHING

Ls -gy, hd, fn-v fn xln w/ chlk to subchlk, ns, no vis por

Ls abun chlk wht-crm no vis por, sctrd min fluoro, no cut, no show

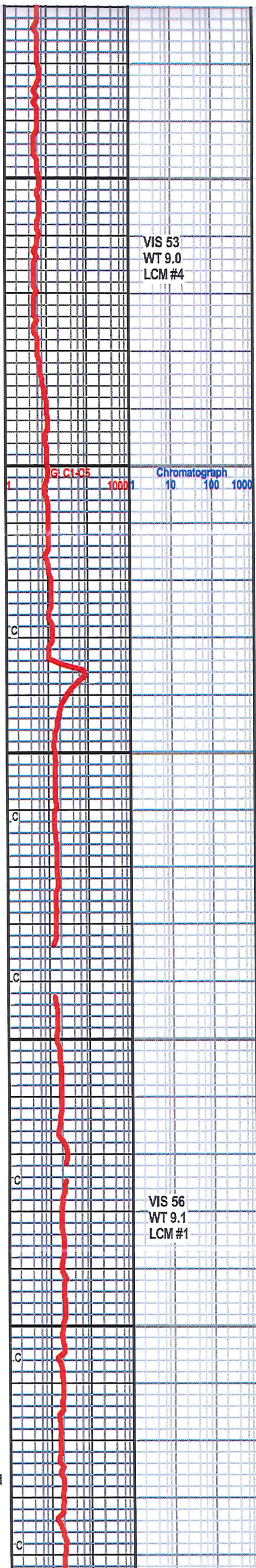
HEEBNER BASE 2923 (-978)

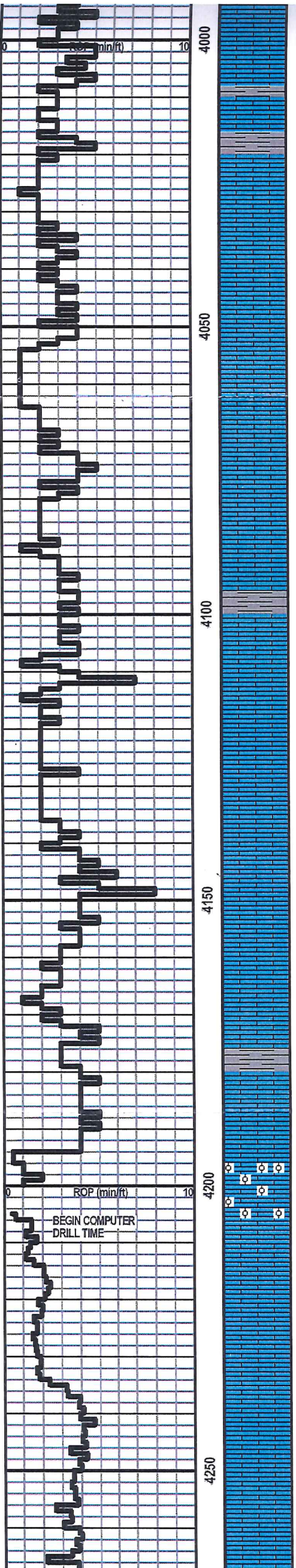
TORONTO 3934 (-989)

Ls - lt gy, hd, abun foss frag, ns

LANSING 3968 (-1023)

Ls crypto to vv fn grn wht -crm w/ tr gy, sctrd min fluoro, no cut, no show





LANSING 'B' 4019 (-1074)

Ls tr to abun wht chalk w/ som ool mat. pr micro pp & intrxstln por

LANSING 'C' 4054 (-1109)

Ls abn crm , crypto - v fn xstln, no vis por, no show

LANSING 'D' 4106

Ls - crm to lt tan, f xln w/ tr subsucro, scat foss frag, ns

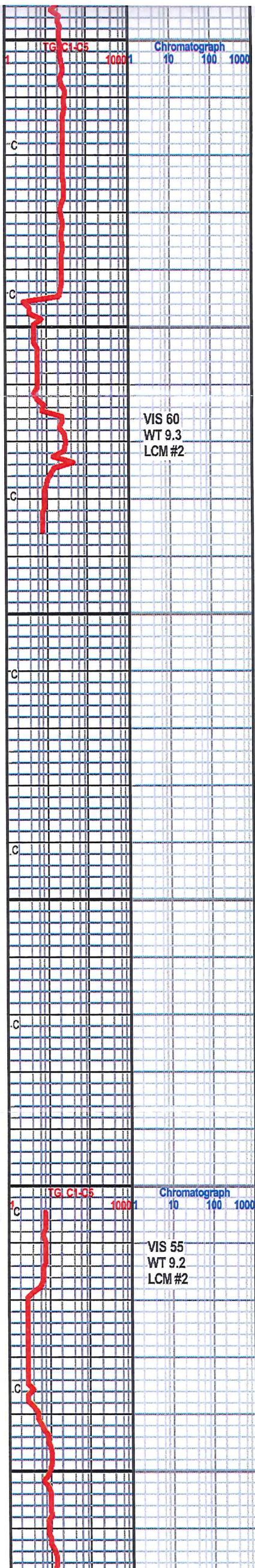
LANSING 'E' 4158 (-1213)

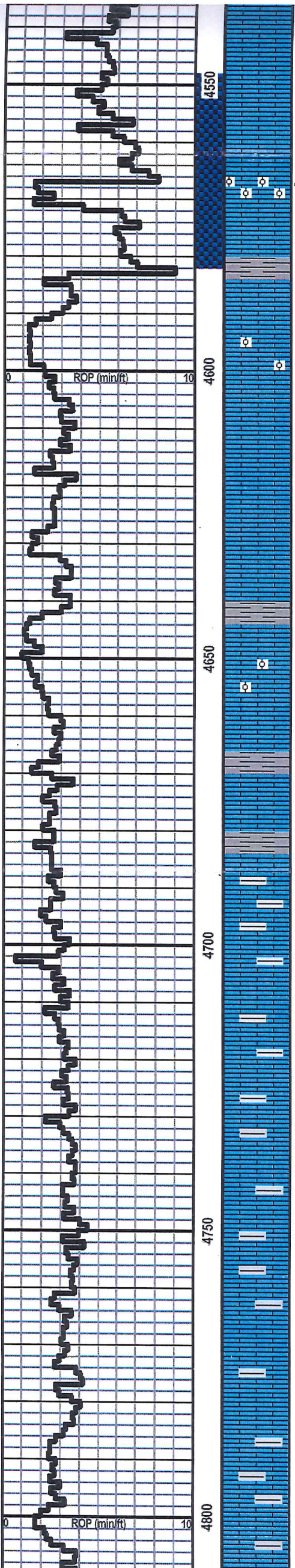
Ls, v chlky, lt gy, ool in pt, no show

LANSING 'F' 4194 (-1249)

Ls v - xtrly chlky with sctrd rexstl foss frag, ool in part, tr poor-fr micro ppt por, no cut, no show

LANSING 'G' 4252 (-1307)





MARMATON 'B' ZONE (-1618)
 Ls crm to lt tan, very ool w/ chlk, wht - crm w/ sptd to unven lt tan oil stain, rexstlz w/ phantom oolites, dull golden fluoro, fair odor, abundant fr to gd ool por frm dissltn of 30% of expsd oolts, 70% rexstlzd, few smpls with abun foss frag

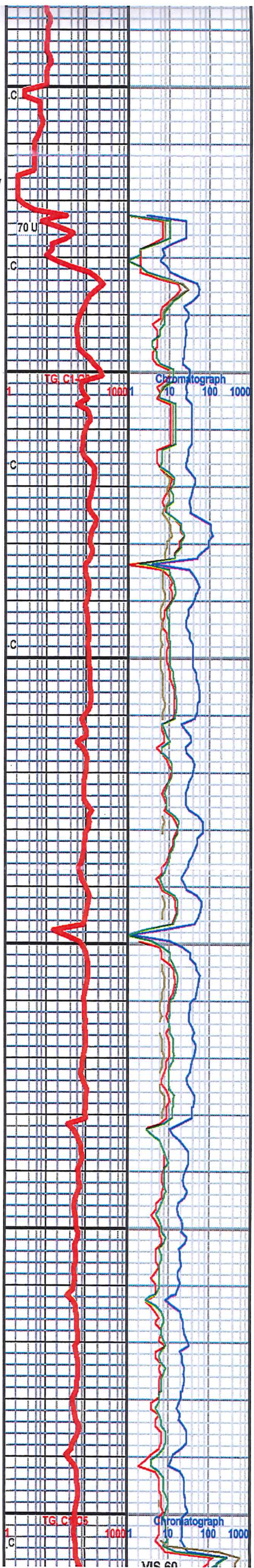
NOVINGER
 Ls, abun chalk, wht-crm, ool in part, tr fr to good intrxstln por, no cut, no show

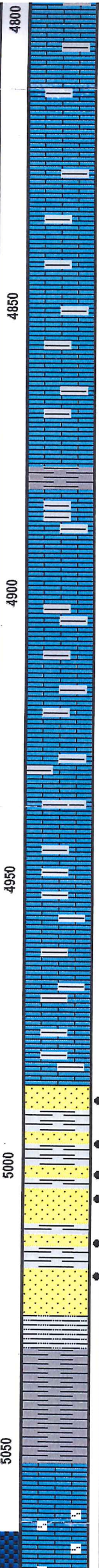
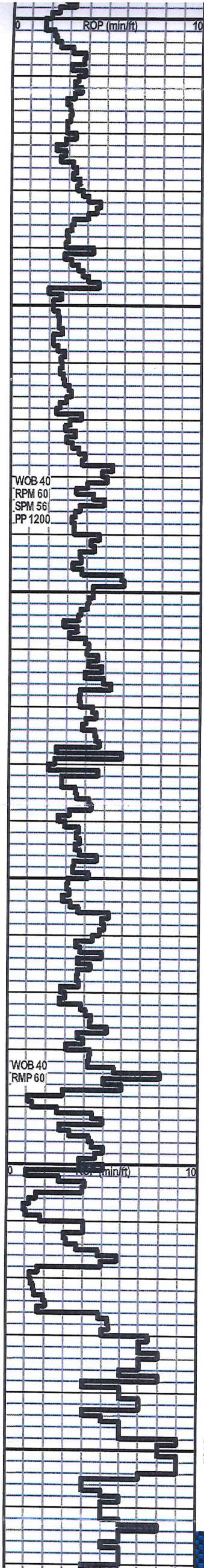
PAWNEE
 tan lim, dns w/chlk, ool in part, scrd min fluoro, no cut, no show

FORT SCOTT

CHEROKEE

Ls sh intrbd





WOB 40
RPM 60
SPM 56
PP 1200

WOB 40
RPM 60

Sh dk gy-blk pyr in part
Ls dk gy, vv fn-crypto, tr micro pp por, dull yel fluor, ns
Sh dk gy- blk, platy
Ls - dk cream-brn, drty, few pcs w/ scrttrd pyrit, v. intrbd, few pcs w/ drk yl fluoro, ns

MORROW 4932 (-1987)

Ls tan-lt-brwn w/ tr lt blu-wht cht, minor glauct, minor pyrite, md-fn xstl, tr poor-intrxstn por
Ls dk gy, tr intrxstn por

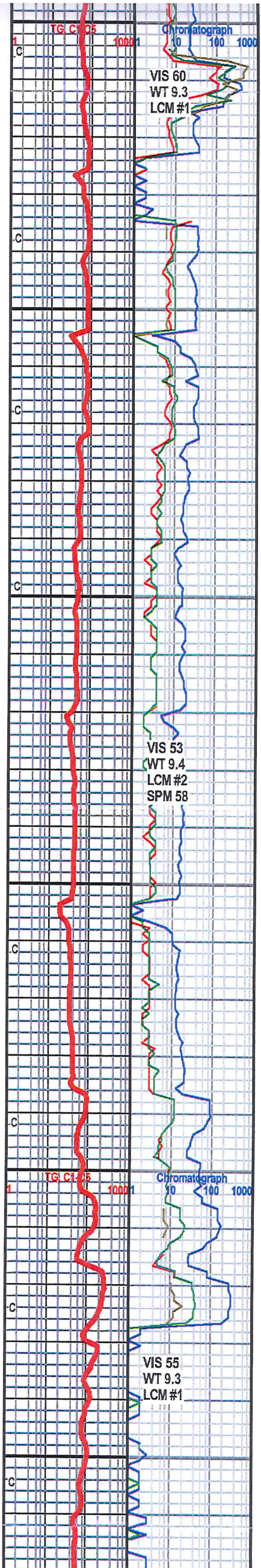
Ss fn-v fn grn, crm-wht w/ spdt to bltchy brn oil stn, friable, tr pr-fr intergrn por, minor clay fill, lt yell fluor, exc strm cut

Ss: vv fn to v fn clear qtz, subrounded w/ brwn even oil stn, tr clay min, dull gold fluoro, abnd fair to good intergranr por, exc strm-flush cut

Ss qtz w/ tr clay min, vvf-v fn, rnd-subrnd, dark brwn even oil stain, strn odor, abun fr intergrnlr por, excl flush cut

CHESTER 5054 (-2109)

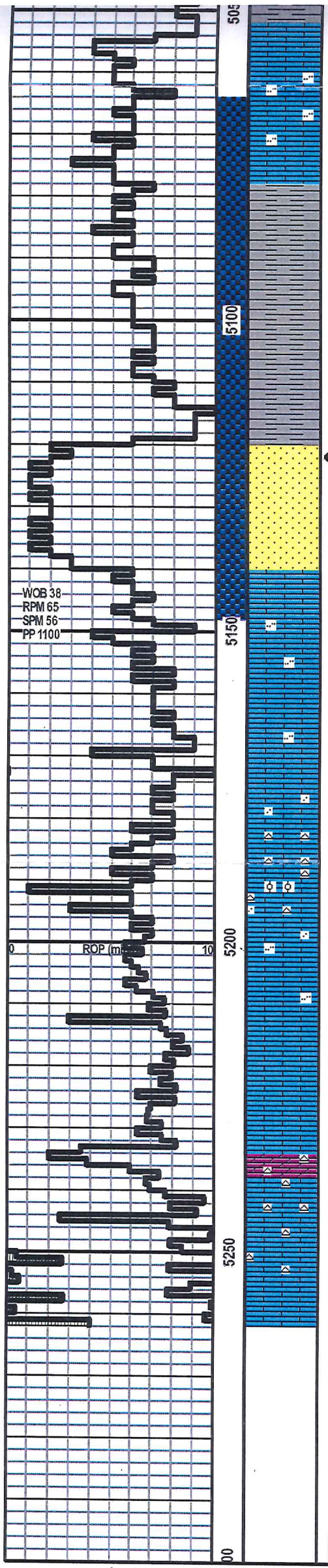
Ls-dns gy-tn, shly in pt or poss intrbbed, abund rextstlzd foss frag



VIS 60
WT 9.3
LCM #1

VIS 53
WT 9.4
LCM #2
SPM 58

VIS 55
WT 9.3
LCM #1



CHESTER 5054 (-2109)

Ls-dns gy-tn, shly in pt or poss intrbded, abund rexstzied foss frag

Ls-sh intrbd

LWR CHST SD 5120 (-2175)

vv fn-v fn clear quartz w/ sptd to even tl-tan-lt brn oil stain, sub-ang, fr sorting, intrbd in pt w/ decr stain and increasing clay min toward base, extremely friable, yel-grn fluoro w/ dec streaming cut, poor to fair w/ tr good intergranular por

MERAMEC 5168 (-2223)

Ls silty in prt gry, tan, with few rexstzied foss frag, org cht pcs, no vis por, no cut, no show

STL 'D' MARKER

Dol, subsucro, tan-org

