

HALLIBURTON

iCem[®] Service

TAPSTONE ENERGY

For: BUCK FOGLE

Date: Saturday, January 03, 2015

RALPH 36-34-9 2H

TAPSTONE ENERGY

Sincerely,
STEPHEN FISH

Legal Notice

Warning Disclaimer

Although the information contained in this report is based on sound engineering practices, the copyright owner(s) does (do) not accept any responsibility whatsoever, in negligence or otherwise, for any loss or damage arising from the possession or use of the report whether in terms of correctness or otherwise. The application, therefore, by the user of this report or any part thereof, is solely at the user's own risk.

Limitations of Liability

Except as expressly set forth herein, there are no representations or warranties by Halliburton, express or implied, including implied warranties of merchantability and/or fitness for a particular purpose. In no event will Halliburton or its suppliers be liable for consequential, incidental, special, punitive or exemplary damages (including, without limitation, loss of data, profits, use of hardware, or software). Customer accepts full responsibility for any investment made based on results from the Software. Any interpretations, analyses or modeling of any data, including, but not limited to Customer data, and any recommendation or decisions based upon such interpretations, analyses or modeling are opinions based upon inferences from measurements and empirical relationships and assumptions, which inferences and assumptions are not infallible, and with respect to which professional may differ. Accordingly, Halliburton cannot and does not warrant the accuracy, correctness or completeness of any such interpretation, recommendation, modeling or other products of the Software Product. As such, any interpretation, recommendation or modeling resulting from the Software for the purpose of any drilling, well treatment, production or financial decision will be at the sole risk of Customer. Under no circumstances will Halliburton or its suppliers be liable for any damages.

HALLIBURTON

Table of Contents

1.0	Real-Time Job Summary	4
1.1	Stage Summary - Liquid Volume, Density, & Design Shutdown	4
1.2	Stage Summary - Pump Pressure & ECD	4
1.3	Stage Summary - Pump Rate & Nitrogen Rate	4
1.4	Shutdown Summary	4
1.5	Job Event Log	5
2.0	Custom Graphs	7
2.1	Custom Graph	7
3.0	Appendix	8
3.1	One-Minutes Real-Time Data Listing	8

1.0 Real-Time Job Summary

1.1 Stage Summary - Liquid Volume, Density, & Design Shutdown

1.2 Stage Summary - Pump Pressure & ECD

1.3 Stage Summary - Pump Rate & Nitrogen Rate

1.4 Shutdown Summary

HALLIBURTON

TAP OIL LIMITED - EBUS
 9.625 IN SURFACE
 TAPSTONE ENERGY

1.5 Job Event Log

Event	Type	Seq. No.	Activity	Graph Label	Date	Time	Source	Downhole Density (ppg)	Combined Pump Rate (bbl/min)	Pass-Side Pump Pressure (psi)	Comments
Event 1	Call Out		Call Out		1/2/2015	22:00:00	USER				DRIVING WHILE TIRED, SAFE FOLLOWING DISTANCE, WATCHING FOR BAD ROAD CONDITIONS
Event 2	Pre-Convoy Safety Meeting		Pre-Convoy Safety Meeting		1/2/2015	23:30:00	USER				
Event 3	Depart from Service Center or Other Site		Depart from Service Center or Other Site		1/3/2015	00:01:00	USER				
Event 4	Arrive at Location from Service Center		Arrive at Location from Service Center		1/3/2015	05:30:00	USER				RIG WAS STARTING TO RUN CASING
Event 5	Pre-Rig Up Safety Meeting		Pre-Rig Up Safety Meeting		1/3/2015	09:30:00	USER				PINCH POINTS, LINE OF FIRE, LIFTING AND LOWERING, REPORT ALL INJURYS,
Event 6	Rig-Up Equipment		Rig-Up Equipment		1/3/2015	10:00:00	USER	0.07	0.00	-4.00	
Event 7	Start Job		Start Job		1/3/2015	10:32:00	COM5	0.08	0.00	-1.00	
Event 8	Prime Pumps		Prime Pumps		1/3/2015	10:39:48	COM5	0.06	0.00	0.00	
Event 9	Test Lines		Test Lines		1/3/2015	11:05:57	COM5	8.50	0.00	-1.00	2000 PSI, GOOD TEST
Event 10	Pump Spacer 1		Pump Spacer 1		1/3/2015	11:09:25	COM5	8.55	0.00	1.00	WATER AHEAD
Event 11	Pump Cement		Pump Cement		1/3/2015	11:14:15	COM5	13.41	4.00	75.00	@ 15 #
Event 12	Shutdown		Shutdown		1/3/2015	11:44:23	COM5	14.89	0.00	74.00	WASH PUMPS AND LINES ON TOP OF PLUG
Event 13	Pump Displacement		Pump Displacement		1/3/2015	11:45:42	COM5	14.73	0.00	-10.00	CEMENT TO SURFACE @ 15 BBL5 GONE 45 BBL5 BACK TO SURFACE
Event 14	Bump Plug		Bump Plug		1/3/2015	12:01:21	COM5	8.64	0.00	860.00	500 OVER
Event 15	Check Floats		Check Floats		1/3/2015	12:03:09	USER	8.64	0.00	881.00	FLOATS DID NOT HOLD
Event 16	End Job		End Job		1/3/2015	12:08:14	COM5	8.65	0.00	478.00	

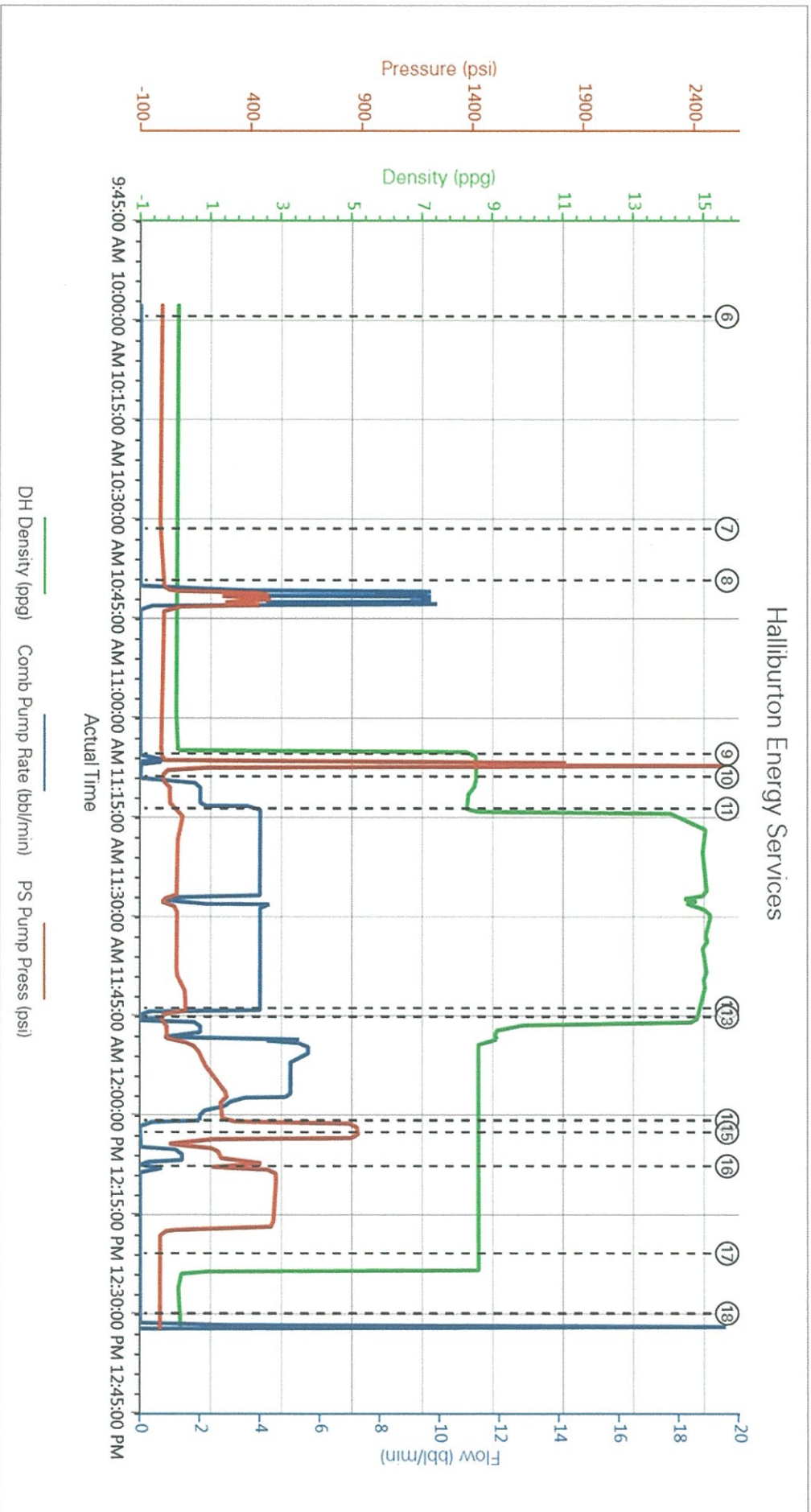
HALLIBURTON

TAP OIL LIMITED - EBUS
 9.625 IN SURFACE
 TAPSTONE ENERGY

Type	Seq. No.	Activity	Graph Label	Date	Time	Source	Downhole Density (ppg)	Combined Pump Rate (bb/min)	Pass-Side Pump Pressure (psf)	Comments
Event	17	Post-Job Safety Meeting (Pre Rig-Down)	Post-Job Safety Meeting (Pre Rig-Down)	1/3/2015	12:21:26	USER	8.61	0.00	-11.00	LINE OF FIRE, PINCH POINTS, LIFTING LOWERING, SUP TRIPS AND FALLS
Event	18	Rig-Down Equipment	Rig-Down Equipment	1/3/2015	12:30:29	USER	0.13	0.00	-11.00	PLANNED STOPS, DRIVING WHILE TIRED, SAFE FOLLOWING DISTANCE
Event	19	Pre-Convoy Safety Meeting	Pre-Convoy Safety Meeting	1/3/2015	13:00:00	USER				
Event	20	Depart Location for Service Center or Other Site	Depart Location for Service Center or Other Site	1/3/2015	13:30:00	USER				

2.0 Custom Graphs

2.1 Custom Graph



3.0 Appendix

3.1 One-Minutes Real-Time Data Listing
