

HALLIBURTON

iCem[®] Service

LUCAS MITCHELL

For:

Date: Saturday, December 20, 2014

tapstone mark 7 inch

Case 1

Sincerely,

Legal Notice

Warning Disclaimer

Although the information contained in this report is based on sound engineering practices, the copyright owner(s) does (do) not accept any responsibility whatsoever, in negligence or otherwise, for any loss or damage arising from the possession or use of the report whether in terms of correctness or otherwise. The application, therefore, by the user of this report or any part thereof, is solely at the user's own risk.

Limitations of Liability

Except as expressly set forth herein, there are no representations or warranties by Halliburton, express or implied, including implied warranties of merchantability and/or fitness for a particular purpose. In no event will Halliburton or its suppliers be liable for consequential, incidental, special, punitive or exemplary damages (including, without limitation, loss of data, profits, use of hardware, or software). Customer accepts full responsibility for any investment made based on results from the Software. Any interpretations, analyses or modeling of any data, including, but not limited to Customer data, and any recommendation or decisions based upon such interpretations, analyses or modeling are opinions based upon inferences from measurements and empirical relationships and assumptions, which inferences and assumptions are not infallible, and with respect to which professional may differ. Accordingly, Halliburton cannot and does not warrant the accuracy, correctness or completeness of any such interpretation, recommendation, modeling or other products of the Software Product. As such, any interpretation, recommendation or modeling resulting from the Software for the purpose of any drilling, well treatment, production or financial decision will be at the sole risk of Customer. Under no circumstances will Halliburton or its suppliers be liable for any damages.

HALLIBURTON

Table of Contents

To Generate a Table of Contents, right click here. Click "Update Field." If prompted, select "Entire Table."

2.0 Temperature Modeling

3.0 Real-Time Job Summary

3.1 Stage Summary - Liquid Volume, Density, & Design Shutdown

3.2 Stage Summary - Pump Pressure & ECD

3.3 Stage Summary - Pump Rate & Nitrogen Rate

3.4 Shutdown Summary

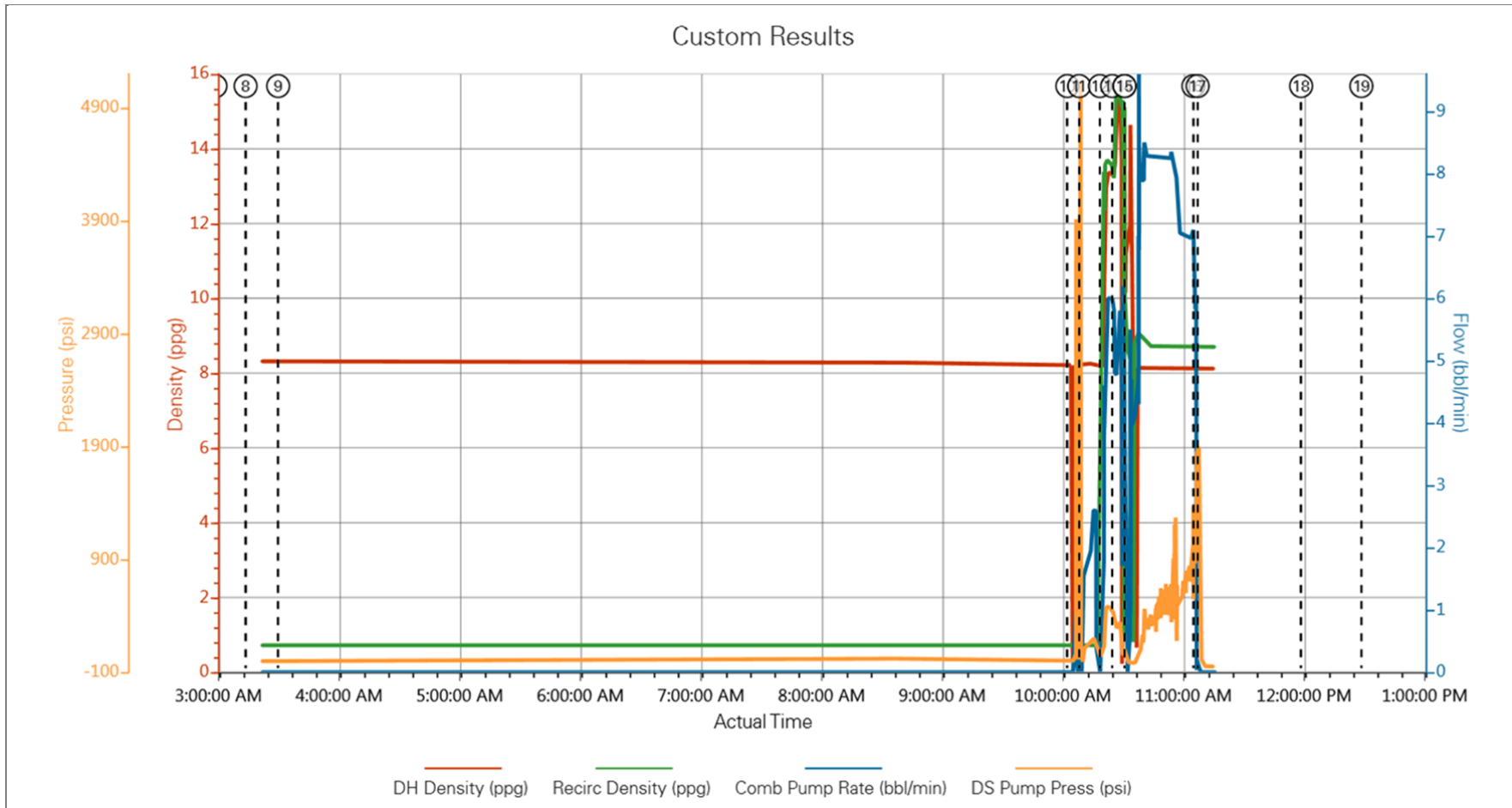
3.5 Job Event Log

Type	Seq. No.	Activity	Graph Label	Date	Time	Source	Downhole Density (ppg)	Recirc Density (ppg)	Combined Pump Rate (bbl/min)	Driv-Side Pump Pressure (psi)	Comments
Event	1	Call Out	Call Out	12/19/2014	21:30:00	USER					
Event	2	Pre-Convoy Safety Meeting	Pre-Convoy Safety Meeting	12/19/2014	22:30:00	USER					discuss route to be taken, safe driving at night
Event	3	Depart Dock for Rig	depart yard	12/19/2014	23:00:00	USER					
Event	4	Arrive At Loc	Arrive At Loc	12/20/2014	01:30:00	USER					customer running casing, all equipment on location on time
Event	5	Assessment Of Location Safety Meeting	Assessment Of Location Safety Meeting	12/20/2014	01:45:00	USER					check location for safety issues, go over job numbersf with company man, locate and test water, supply
Event	6	Wait on Customer or Customer Sub-Contractor Equip - Start Time	Wait on Customer or Customer Sub-Contractor Equip - Start Time	12/20/2014	02:00:00	USER					customer running casing, rigging down casing crew
Event	7	Pre-Rig Up Safety Meeting	pre rig up meeting	12/20/2014	03:00:00	USER					discuss task to be done, discuss safety concerns and issues, make sure all hands understand what is to be done and the safe ways of doing the task, go over proper ppe
Event	8	Rig-Up Equipment	rig up equipment	12/20/2014	03:15:00	USER					rig up hes hard lines, water lines,
Event	9	Pre-Job Safety Meeting	Pre-Job Safety Meeting	12/20/2014	03:31:11	USER	8.34	0.72	0.00	-1.00	discuss task with all hands, go over job numbers and process witha ll hands, discuss any safety issues, that may arrise
Event	10	Test Lines	Test Lines	12/20/2014	10:03:42	COM7	8.19	0.72	0.00	3.00	test hes lines to 5000psi

Type	Seq. No.	Activity	Graph Label	Date	Time	Source	Downhole Density (ppg)	Recirc Density (ppg)	Combined Pump Rate (bbl/min)	Driv-Side Pump Pressure (psi)	Comments
Event	11	Pump Spacer 1	Pump Spacer 1	12/20/2014	10:09:36	COM7	8.23	0.72	0.00	-15.00	
Event	12	Pump Lead Cement	Pump Lead Cement	12/20/2014	10:19:54	COM7	8.17	13.39	0.00	36.00	pump 140sk cmt mixed @ 13.6 totalling 37bbl
Event	13	Pump Tail Cement	Pump Tail Cement	12/20/2014	10:26:02	COM7	14.48	15.56	4.80	277.00	pump 90sk cmt mixed @ 15.6 totalling 19bbl
Event	14	Drop Top Plug	Drop Top Plug	12/20/2014	10:32:10	COM7	11.62	8.68	0.00	-22.00	
Event	15	Pump Displacement	Pump Displacement	12/20/2014	10:32:12	COM7	11.62	8.72	0.00	-23.00	pumped 194rig supplied fresh water returns threw out job
Event	16	Bump Plug	Bump Plug	12/20/2014	11:06:24	COM7				1000.00	bumped plug @ 1000psi took over to 1850psi
Event	17	Other	check floats	12/20/2014	11:08:31	COM7					floats held 1.5 bbl back to truck when released
Event	18	Pre-Rig Down Safety Meeting	Pre-Rig Down Safety Meeting	12/20/2014	12:00:00	USER					discuss task to be done, safe workf actions and proper ppe
Event	19	Rig-Down Equipment	Rig-Down Equipment	12/20/2014	12:30:00	USER					rig down hes hard lines, water lines, cmt head
Event	20	Pre-Convoy Safety Meeting	pre convoy safety meeting	12/20/2014	14:00:00	USER					discuss routes to be taken and safe driving practices
Event	21	Depart Location	Depart Location	12/20/2014	14:30:00	USER					

4.0 Custom Graphs

4.1 Custom Graph



5.0 Appendix

5.1 One-Minutes Real-Time Data Listing
