



GAMMA RAY RADIAL BOND VARIABLE DENSITY CASING COLLAR LOG

Company T & R OIL COMPANY
 Well DENTON # 15
 Field GRAND SUMMIT
 County COWLEY
 State KANSAS

Company T & R OIL COMPANY
 Well DENTON # 15
 Field GRAND SUMMIT
 County COWLEY State KANSAS

Location: E/2 SW SE SE 330' FSL & 690' FEL SEC 04 TWP 31S RGE 08E	API #: 15-035-24603-0000	Other Services <p style="text-align: center;">PERF</p> Elevation K.B. 1432' D.F. 1431' G.L. 1428'
Permanent Datum GL Elevation 1428' Log Measured From KB Drilling Measured From KB		

Date	10-09-2014		
Run Number	ONE		
Depth Driller	3100'		
Depth Logger	3047'		
Bottom Logged Interval	3045'		
Top Log Interval	SURFACE		
Open Hole Size	7 7/8"		
Type Fluid	WATER		
Density / Viscosity	N/A		
Max. Recorded Temp.	N/A		
Estimated Cement Top	SURFACE		
Time Well Ready	ON ARRIVAL		
Time Logger on Bottom	9:35 AM		
Equipment Number	OW6		
Location	HOMINY, OK		
Recorded By	BRYON MARSHALL	KENT HENSLEY	
Witnessed By	MR. PATTERSON		

Borehole Record				Tubing Record			
Run Number	Bit	From	To	Size	Weight	From	To

Casing Record	Size	Wgt/Ft	Top	Bottom
Surface String				
Prot. String	5.5"		SURFACE	TD
Production String				
Liner				

>>> Fold Here <<<

All interpretations are opinions based on inferences from electrical or other measurements and we cannot and do not guarantee the accuracy or correctness of any interpretation, and we shall not, except in the case of gross or willful negligence on our part, be liable or responsible for any loss, costs, damages, or expenses incurred or sustained by anyone resulting from any interpretation made by any of our officers, agents or employees. These interpretations are also subject to our general terms and conditions set out in our current Price Schedule.

Comments

FILE # OW6-3591
 THANK YOU FOR USING OSAGE WIRELINE!



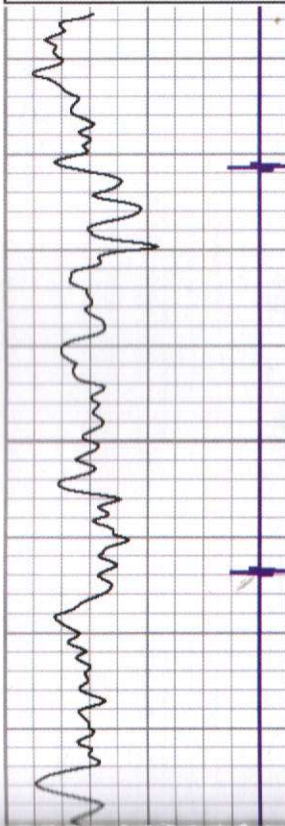
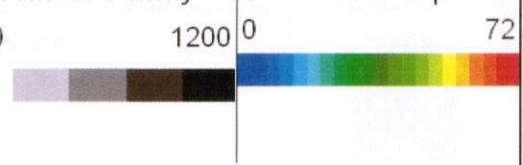
GR/CCL/VDL

Database File: c:\warrior\data\ow6\ow6-3591 t and r oil denton 15.db
 Dataset Pathname: pass1.1
 Presentation Format: ow3-radi
 Dataset Creation: Thu Oct 09 11:02:33 2014 by Calc 0
 Charted by: Depth in Feet scaled 1:240

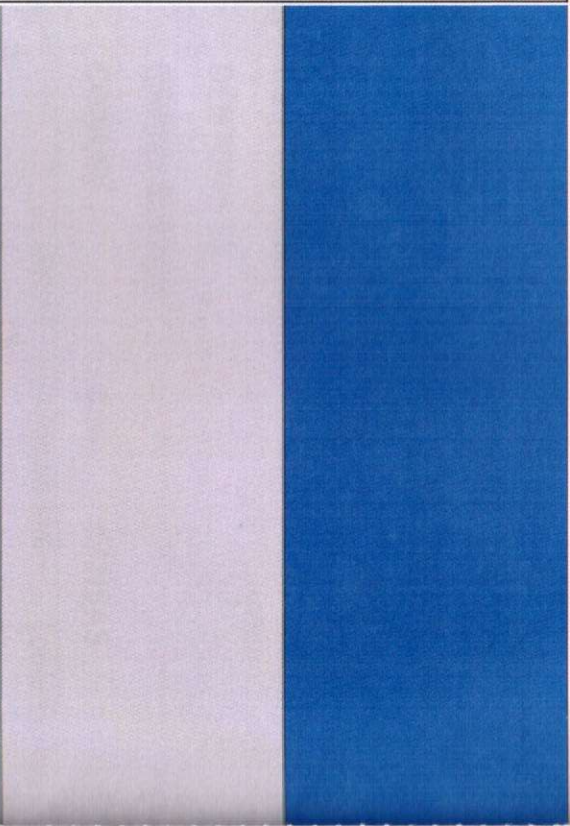
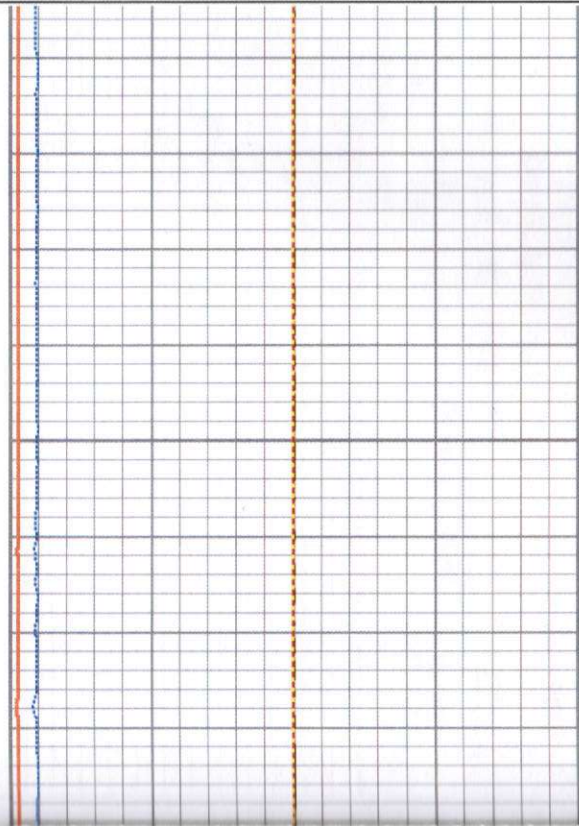
40	Casing Collar -4.5		Pipe Bond	0	Sector 1	100	Variable Density	1	Radial Map	8
	Gamma Ray	0	(mV) 100	0	Sector 2	100		200	1200	0
0	(GAPI) 150		Pipe Bond x5	0	Sector 3	100				
		0	(mV) 30	0	Sector 4	100				

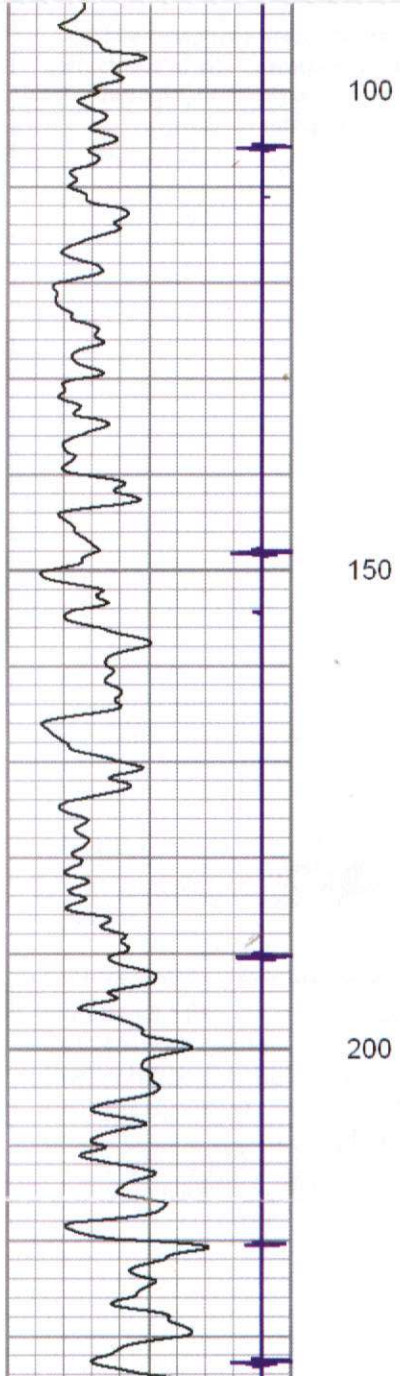
Gamma Ray		
0	(GAPI)	150

0	(mV)	100	0	Sector 2	100
Pipe Bond x5			0	Sector 3	100
0	(mV)	30	0	Sector 4	100
Travel Time			0	Sector 5	100
800	(usec)	200	0	Sector 6	100
			0	Sector 7	100
			0	Sector 8	100



50

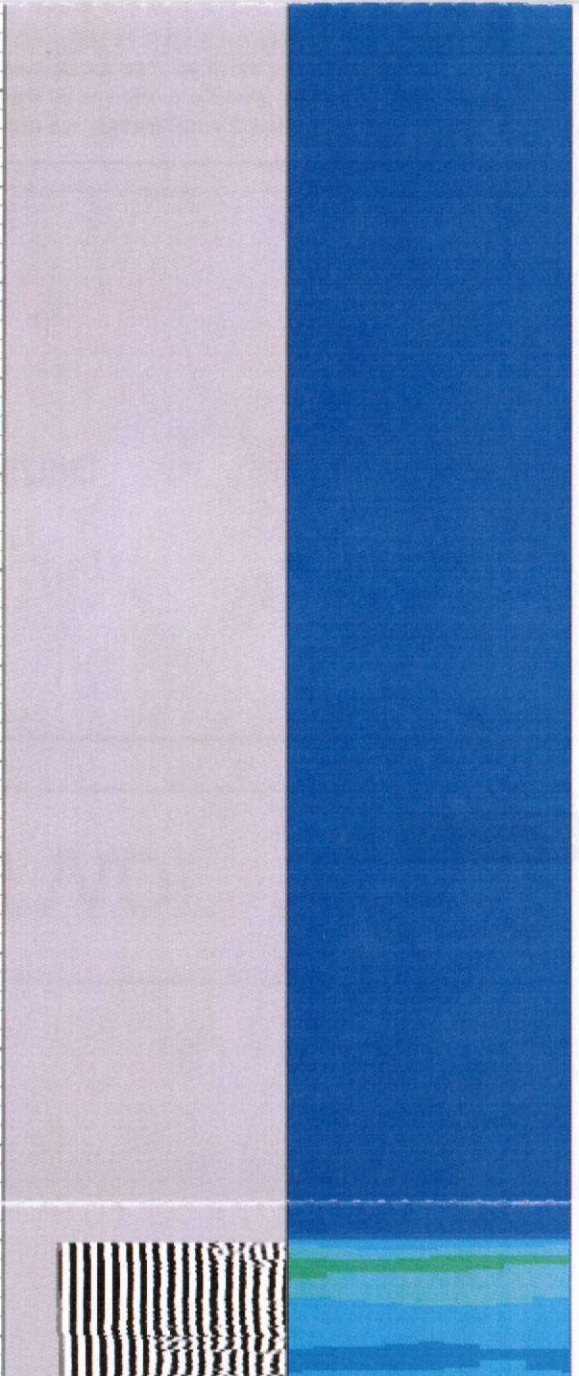
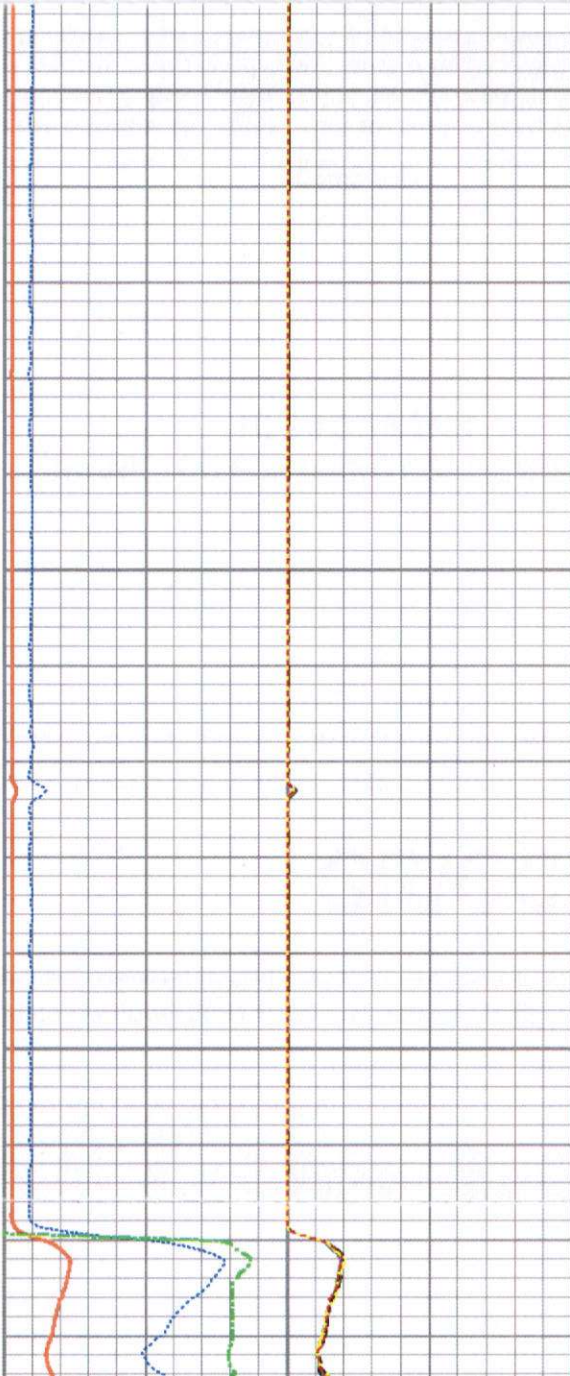


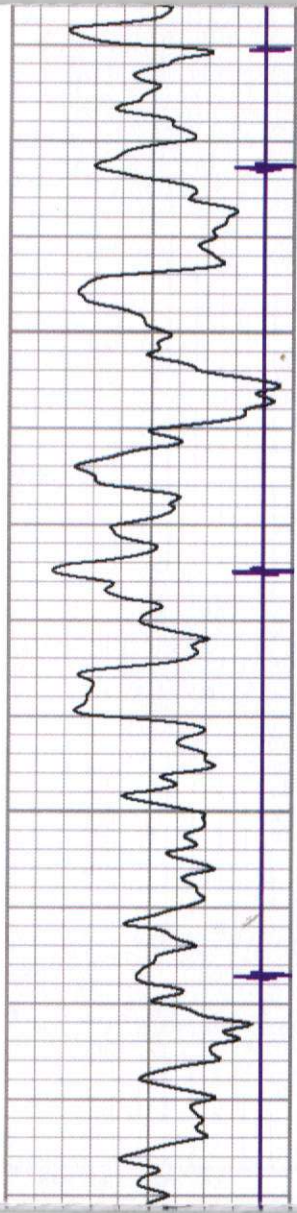


100

150

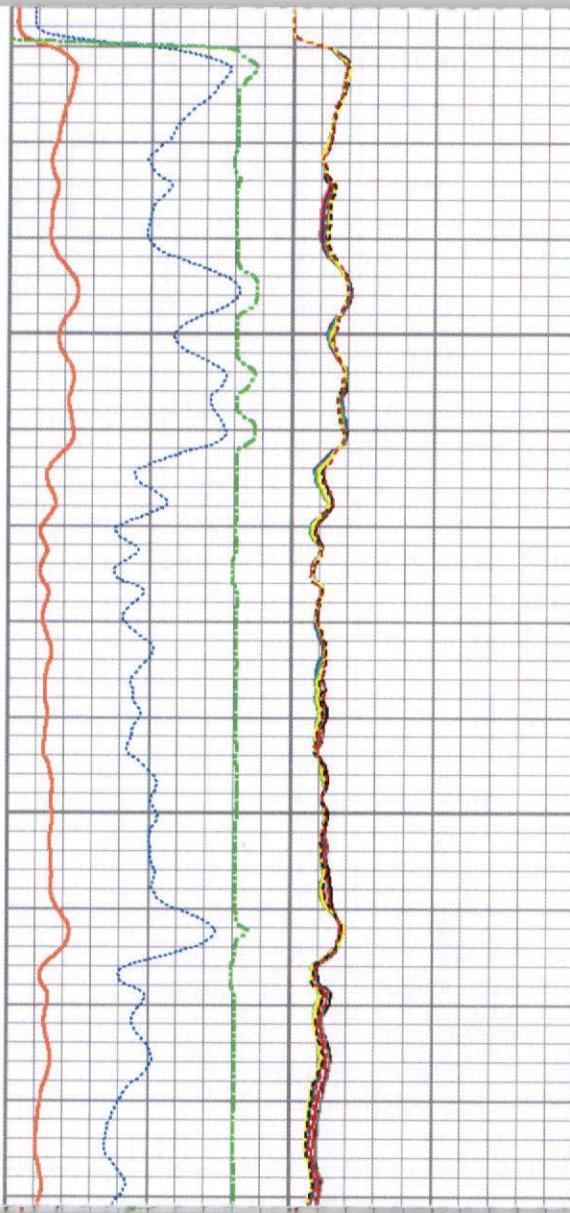
200

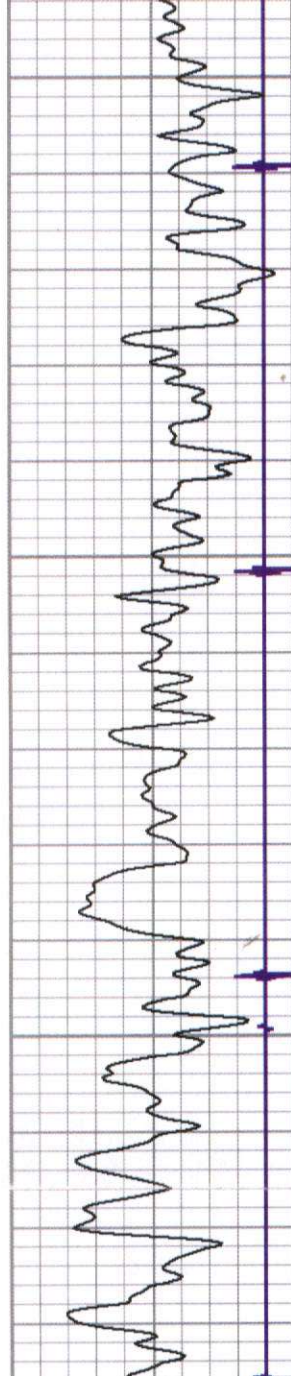




250

300

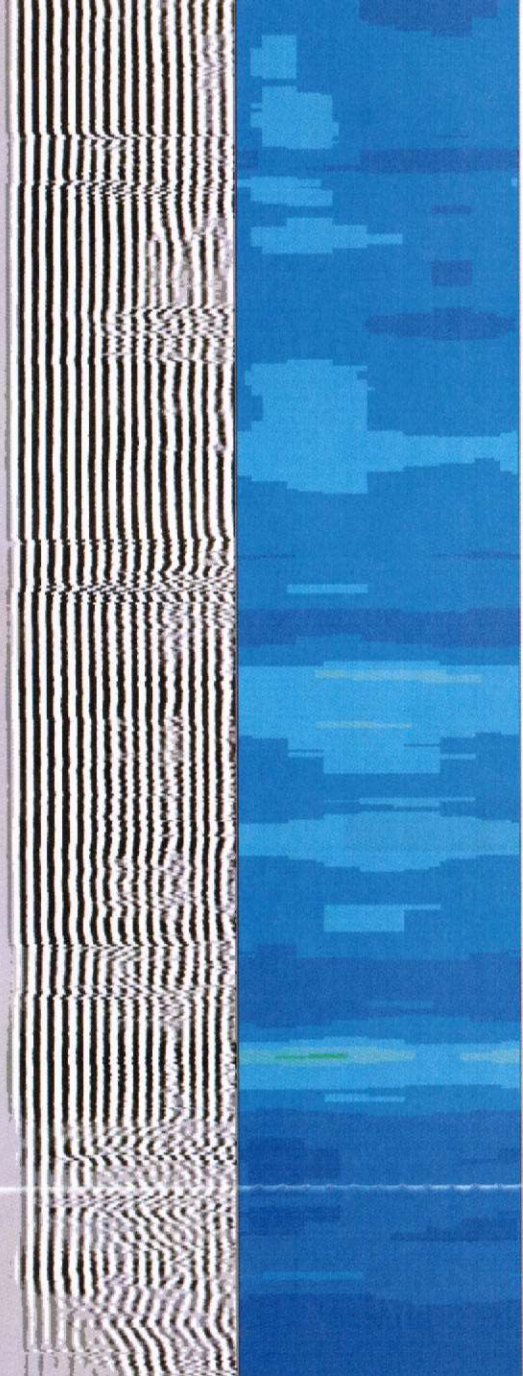
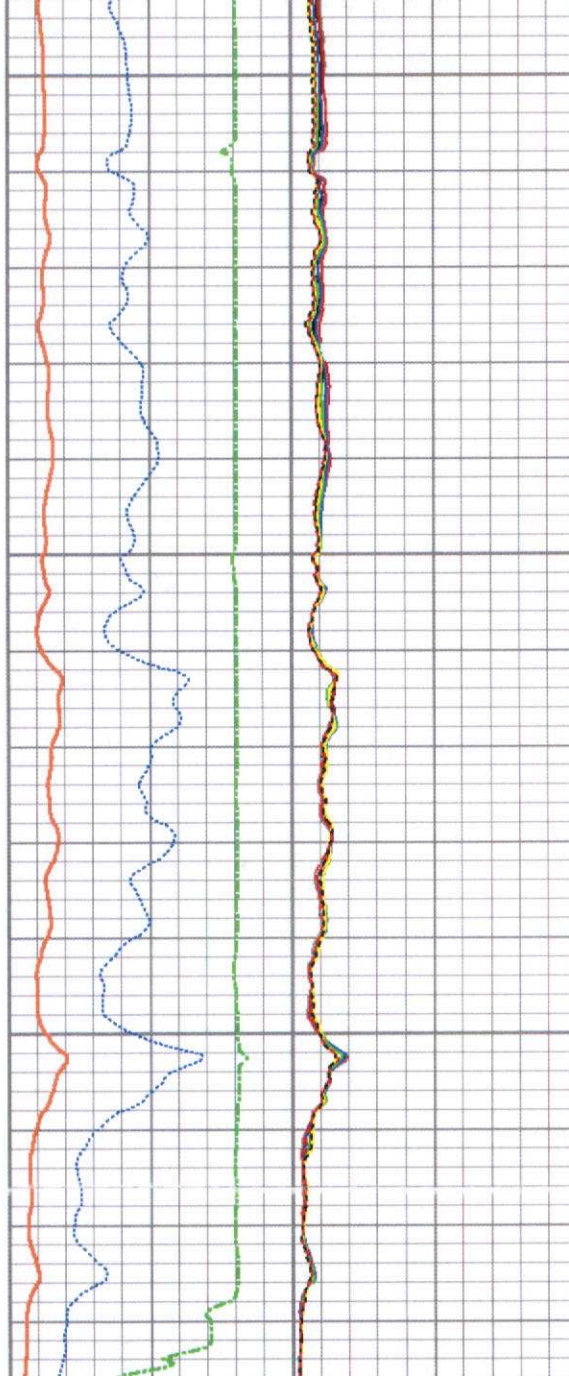




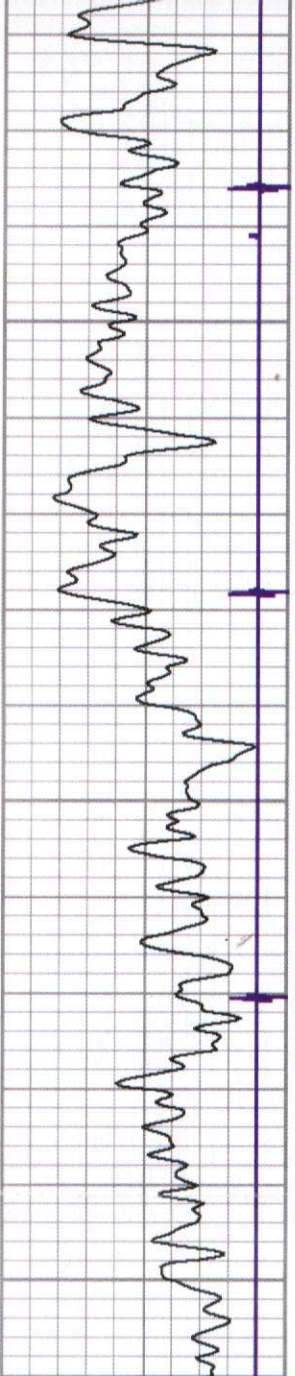
350

400

450



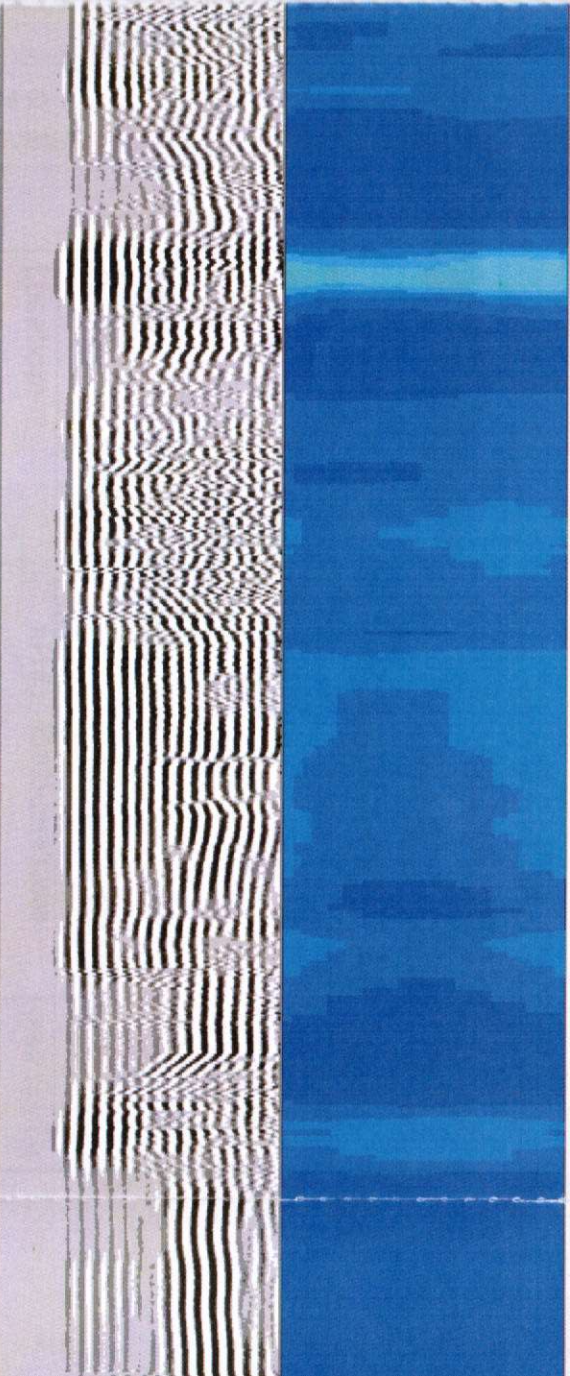
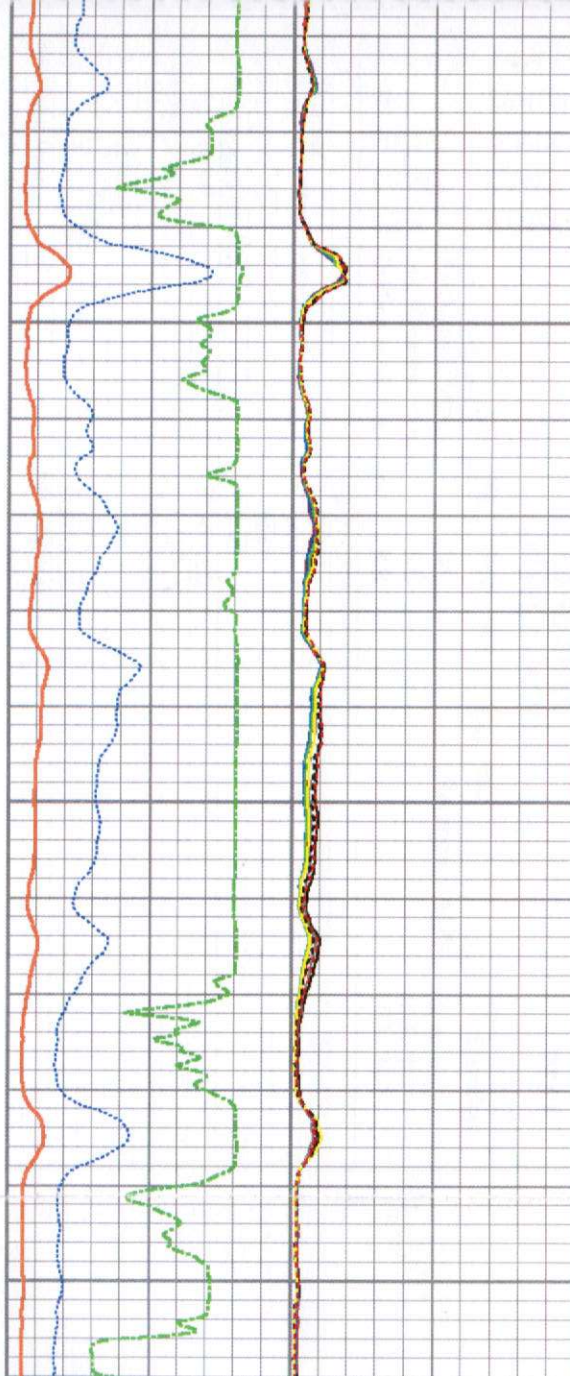
APR 15 1994 09:10:00

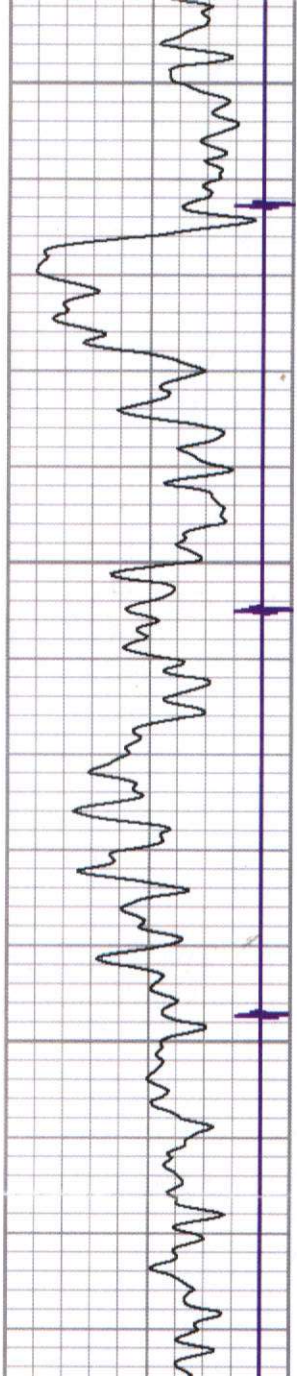


500

550

600

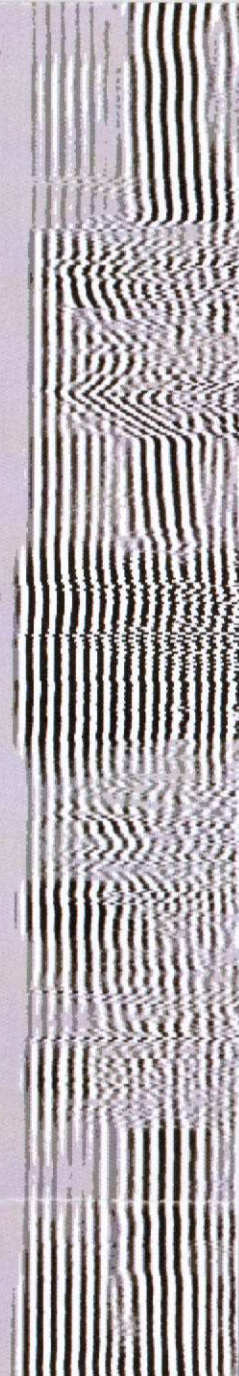
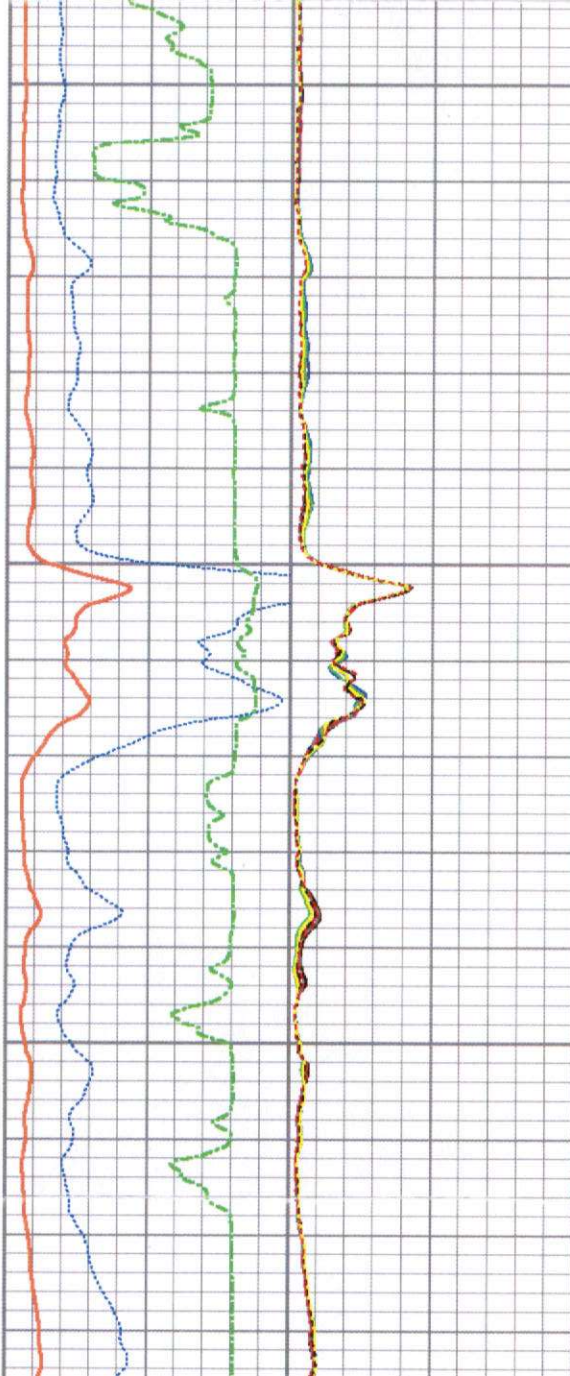


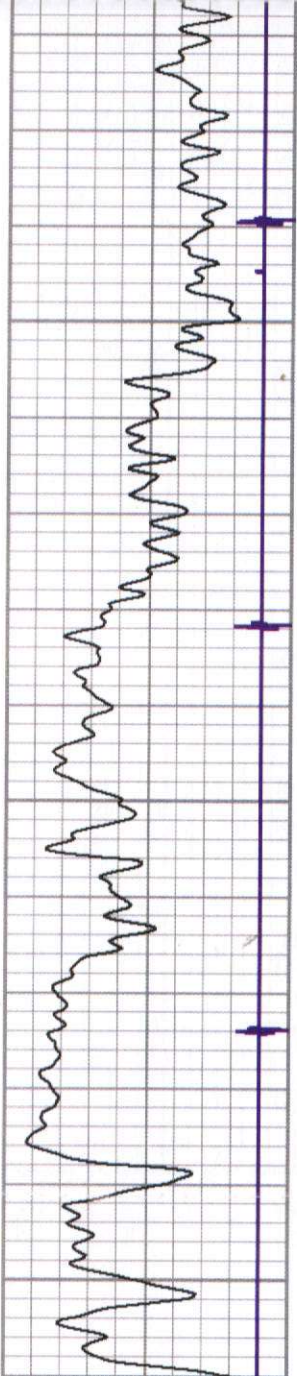


600

650

700

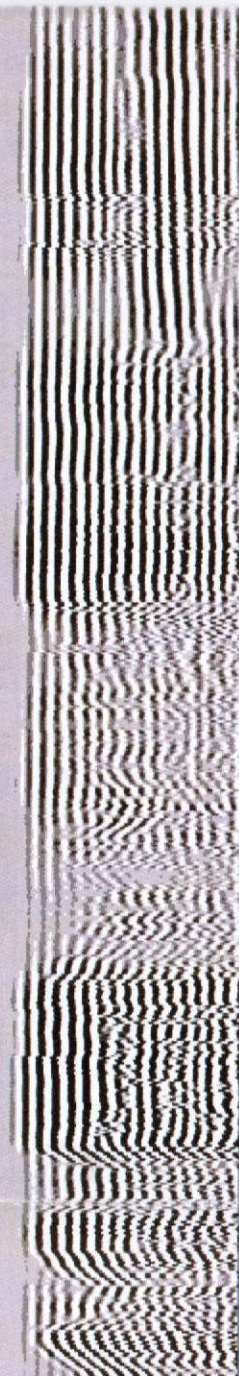
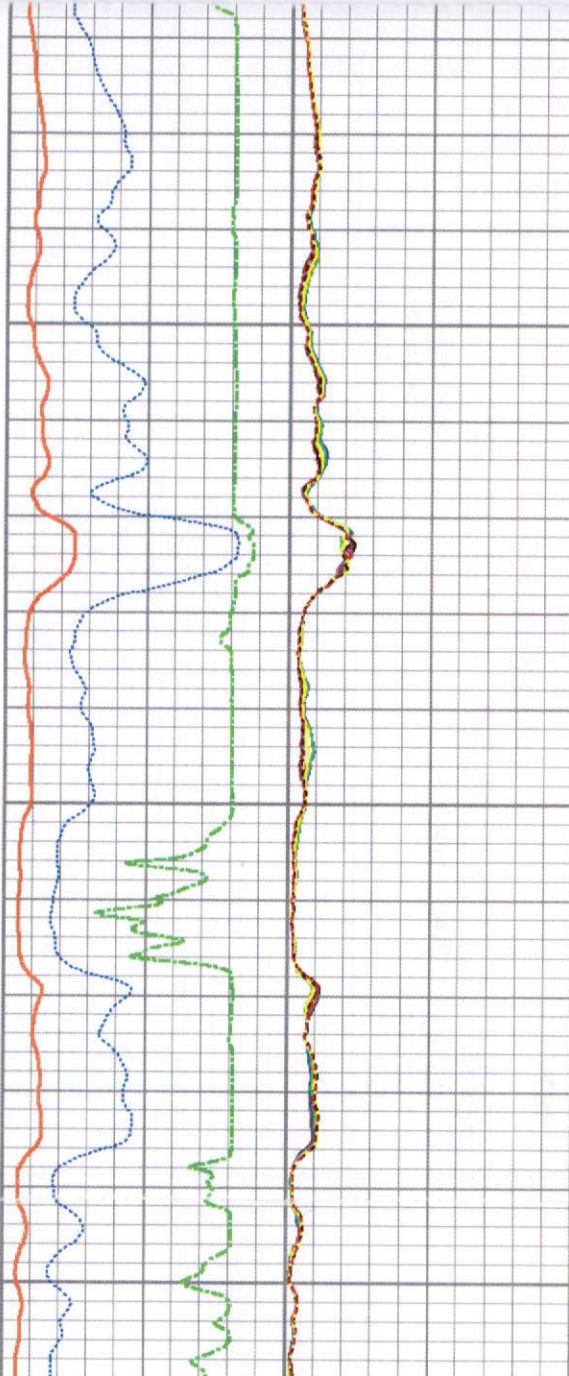


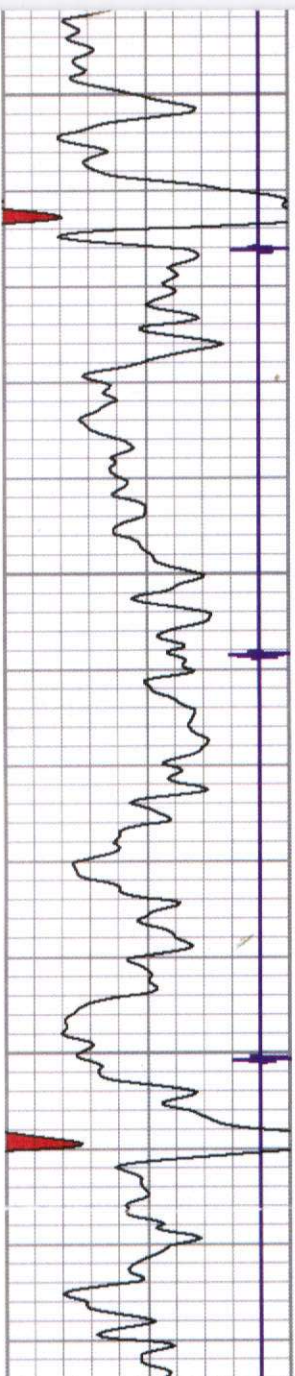


750

800

850

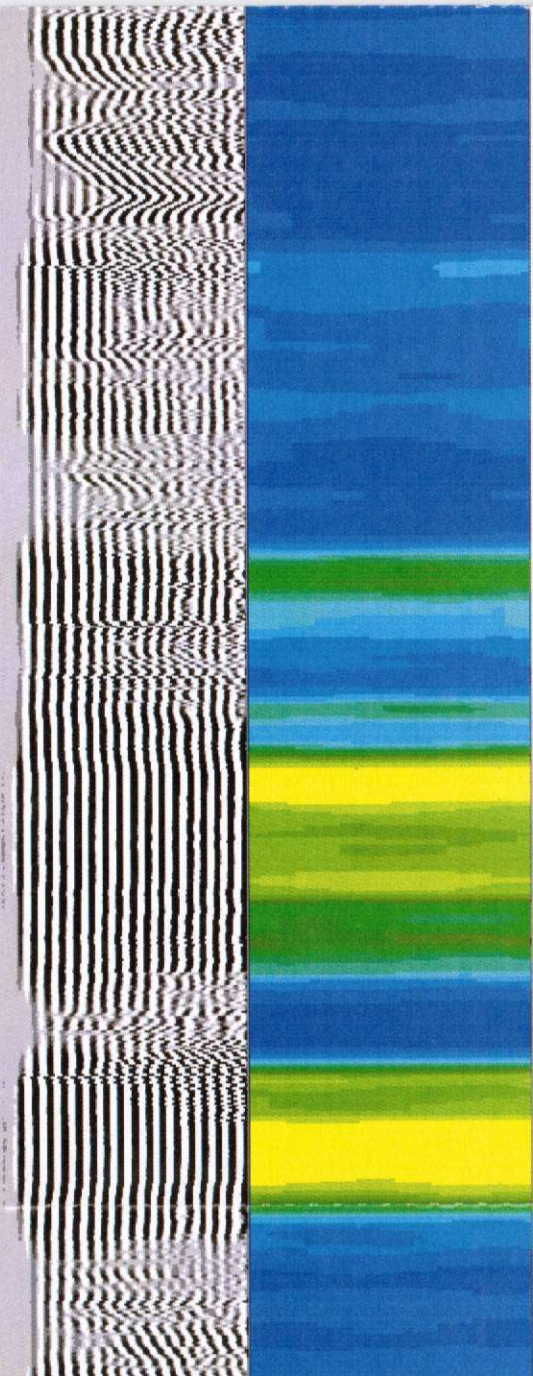
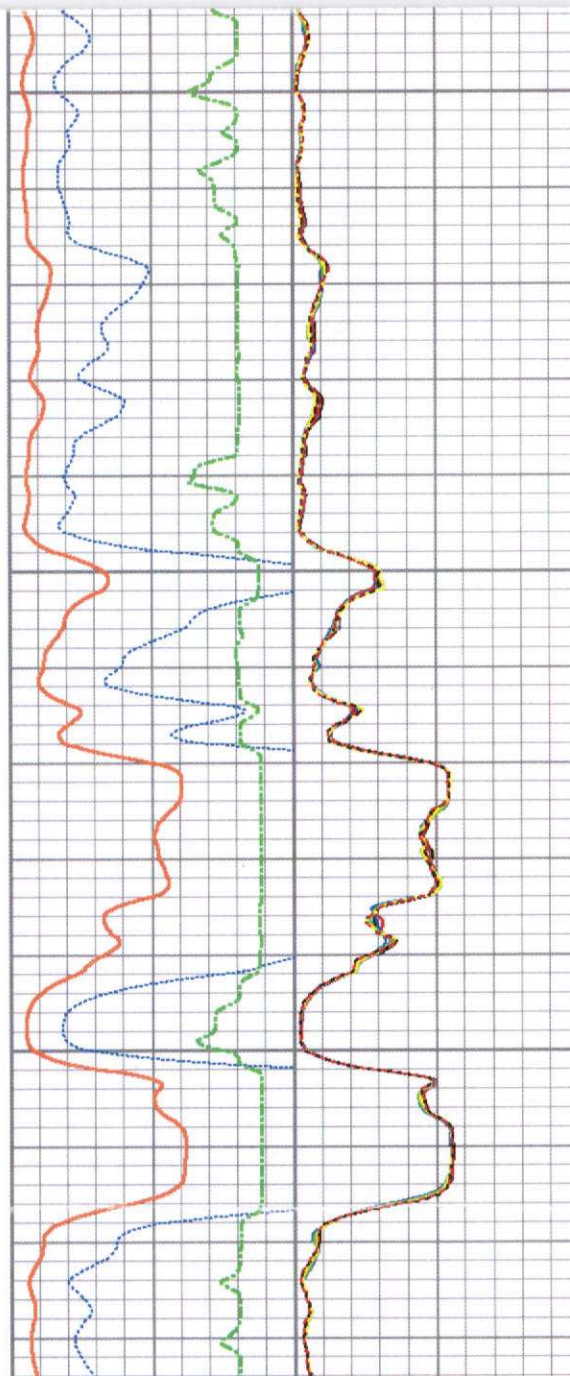


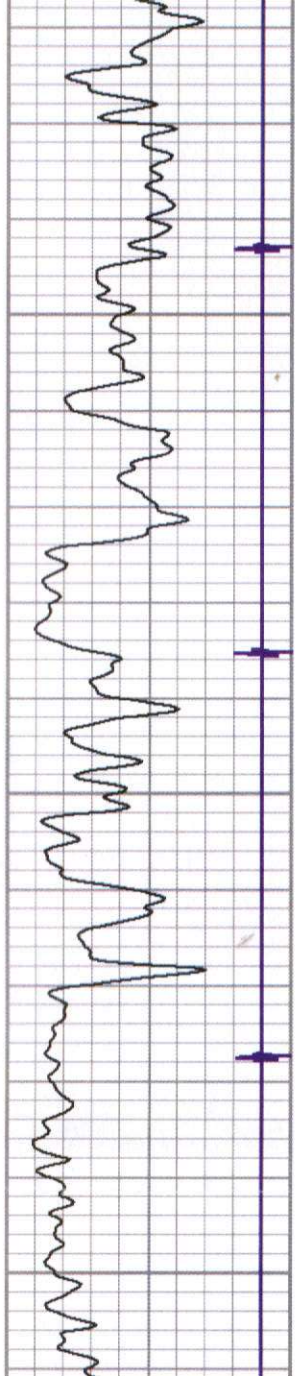


850

900

950

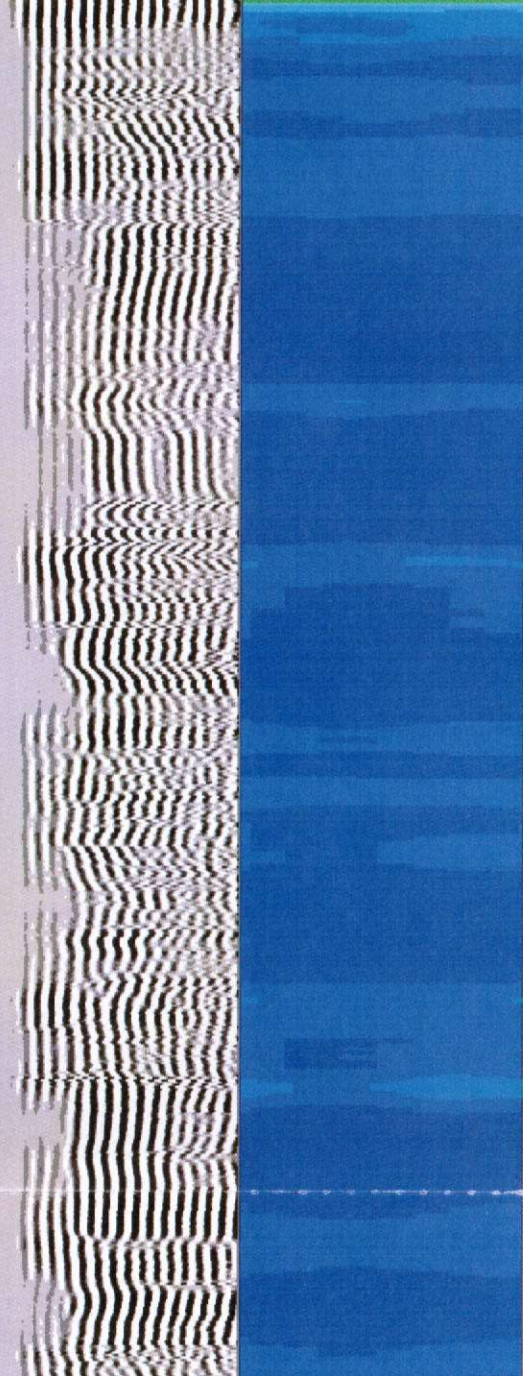
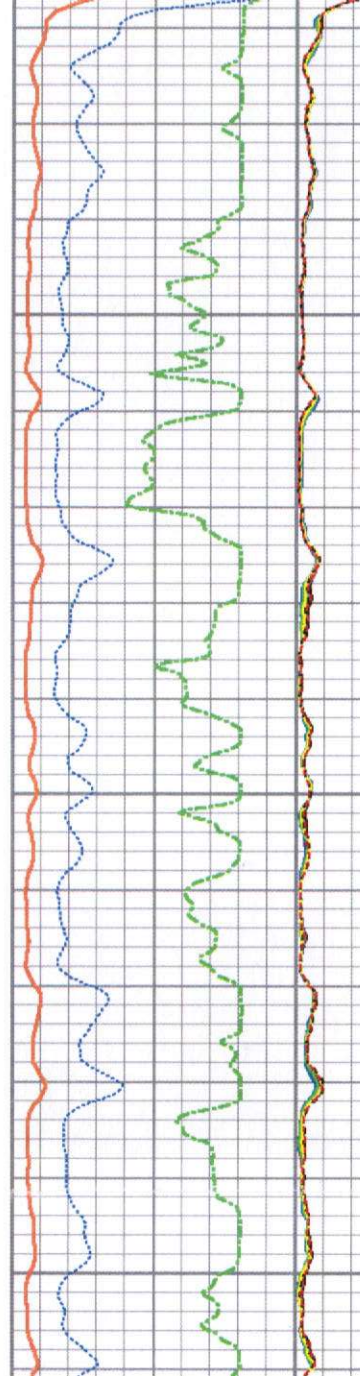


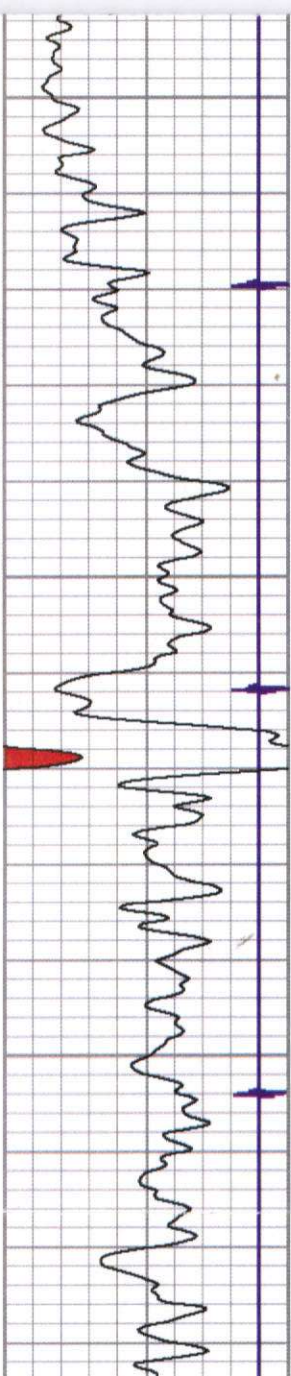


1000

1050

1100

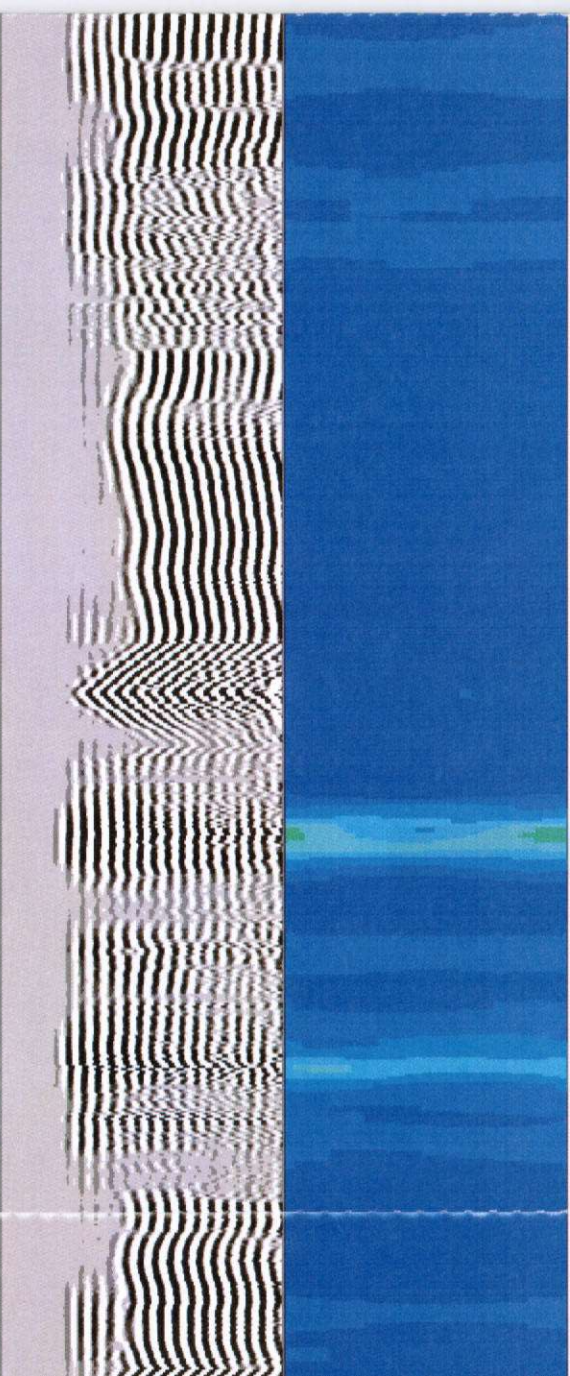
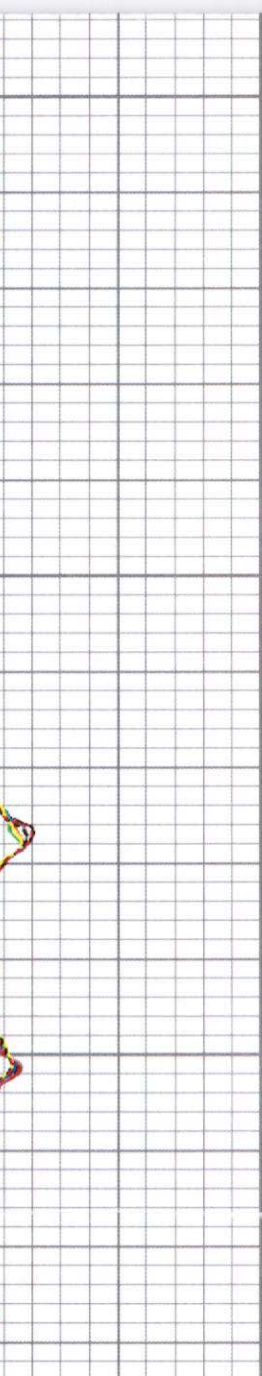
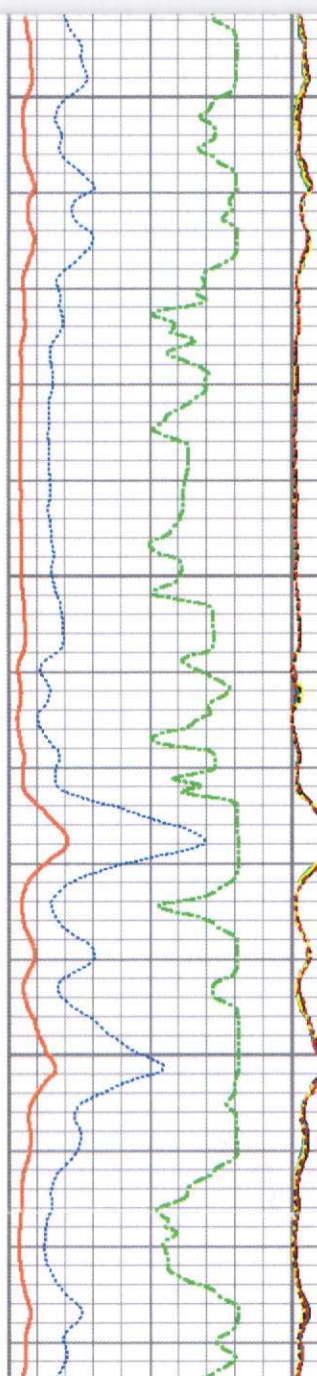


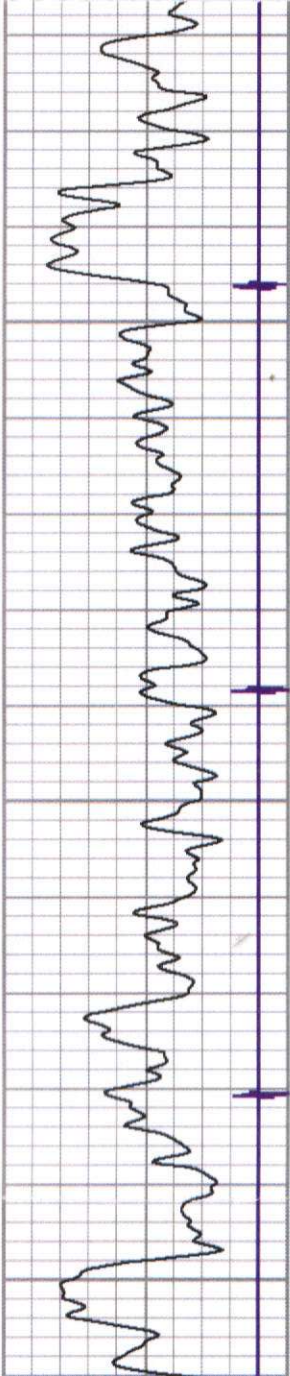


1100

1150

1200

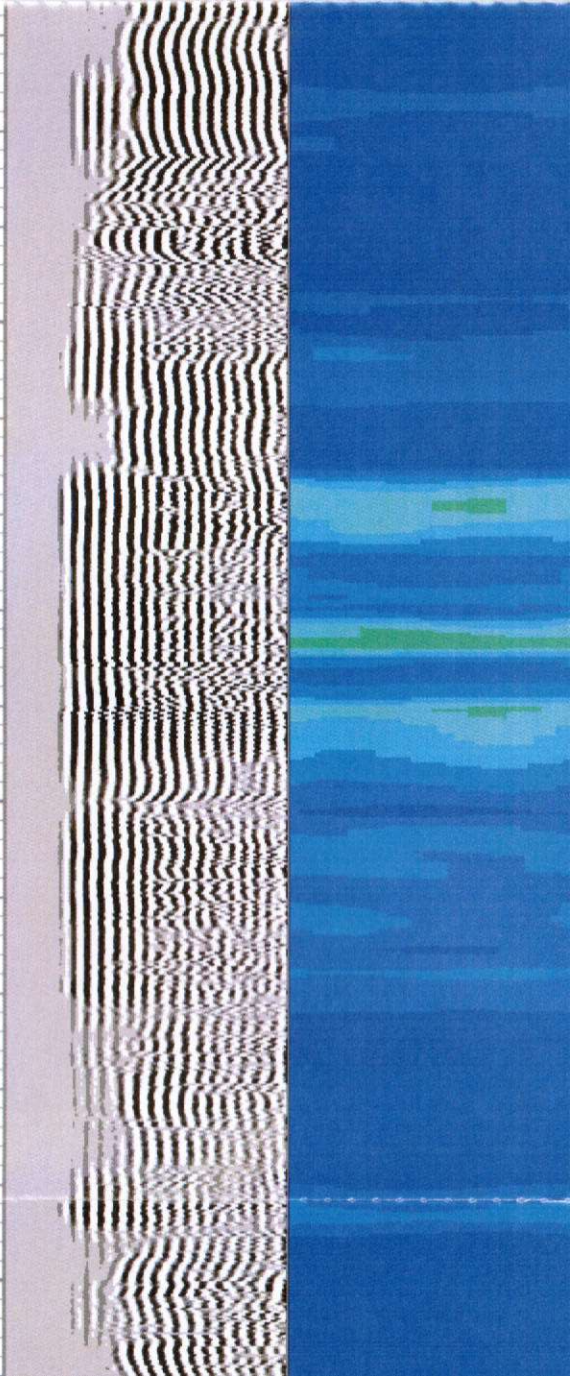
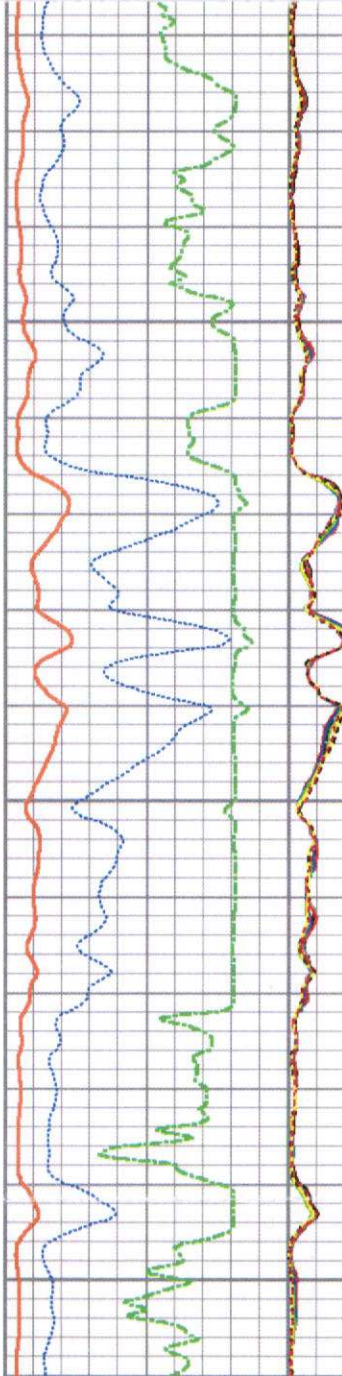


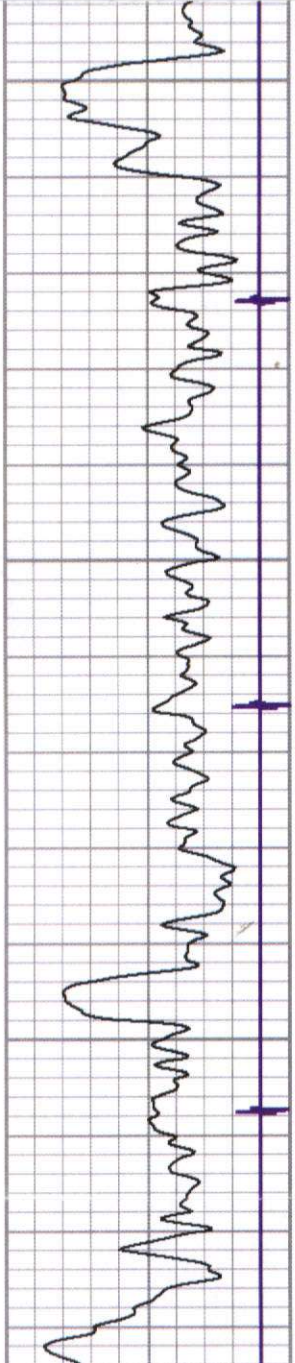


1250

1300

1350

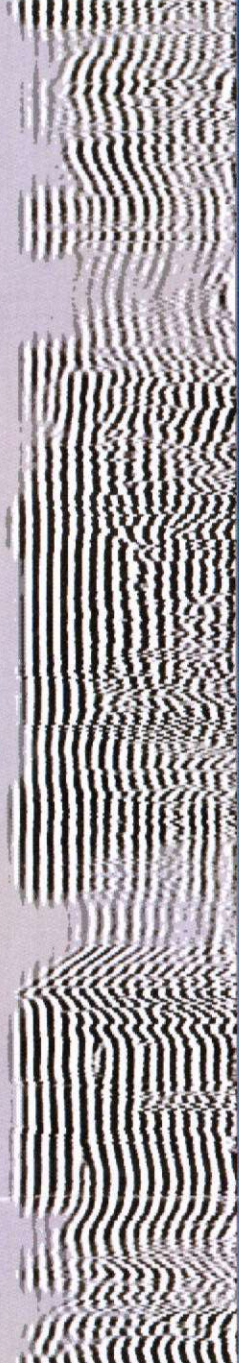
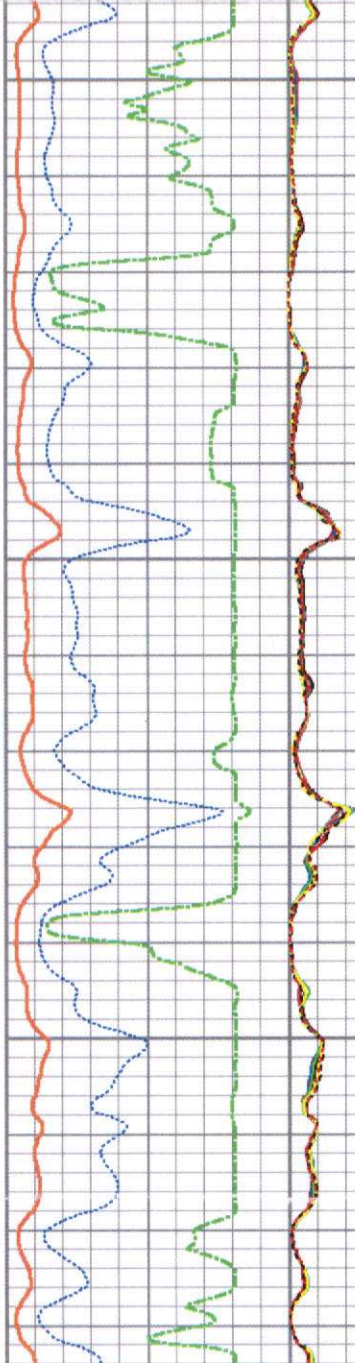


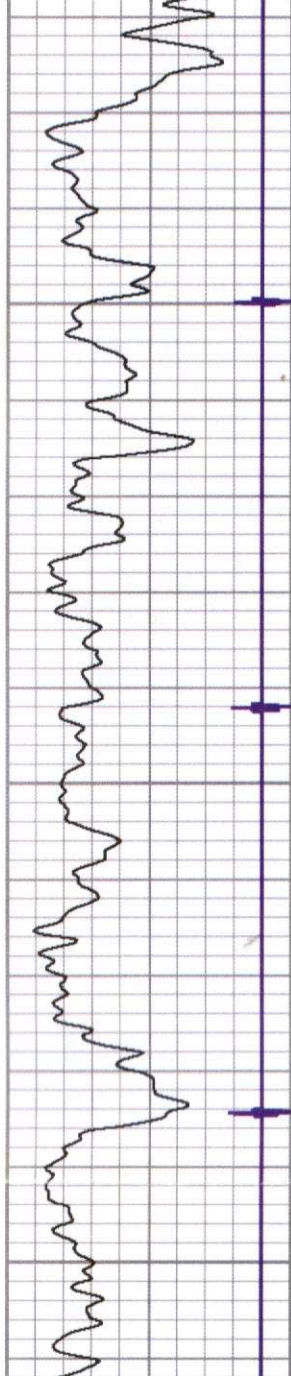


1350

1400

1450

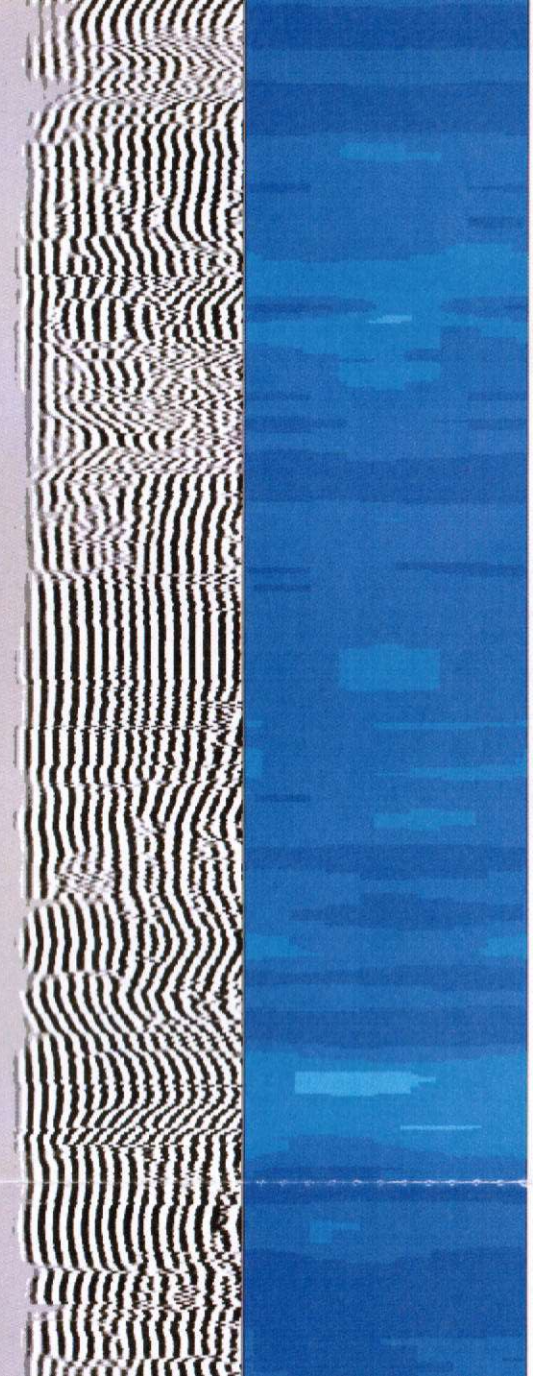
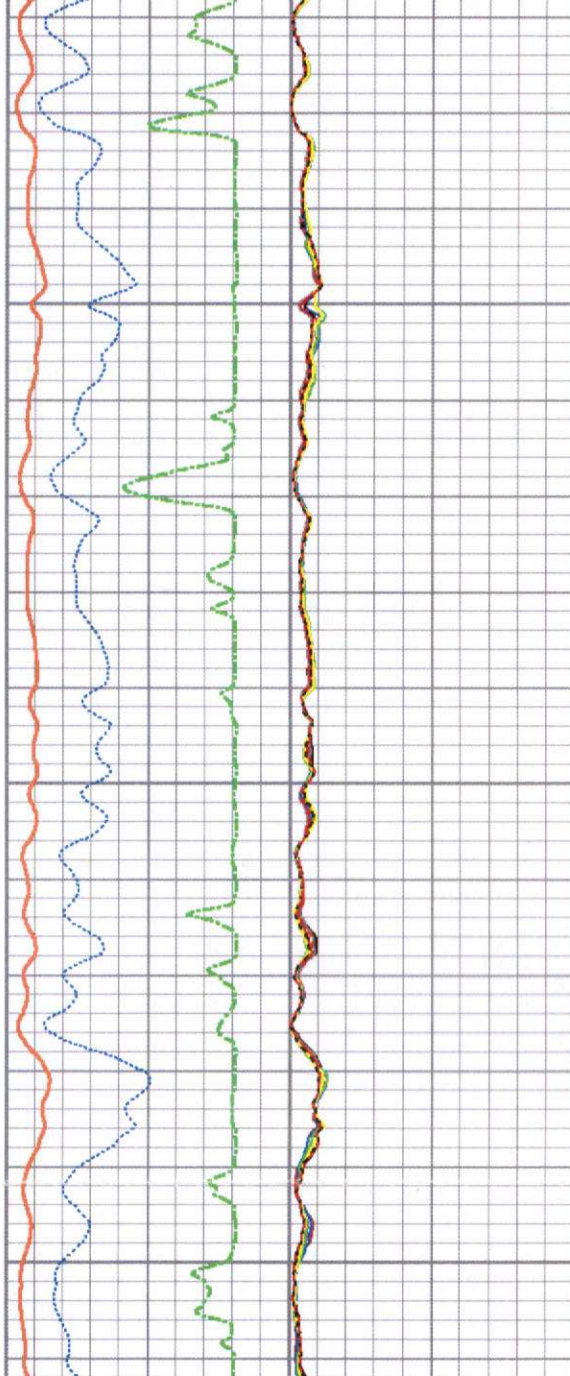


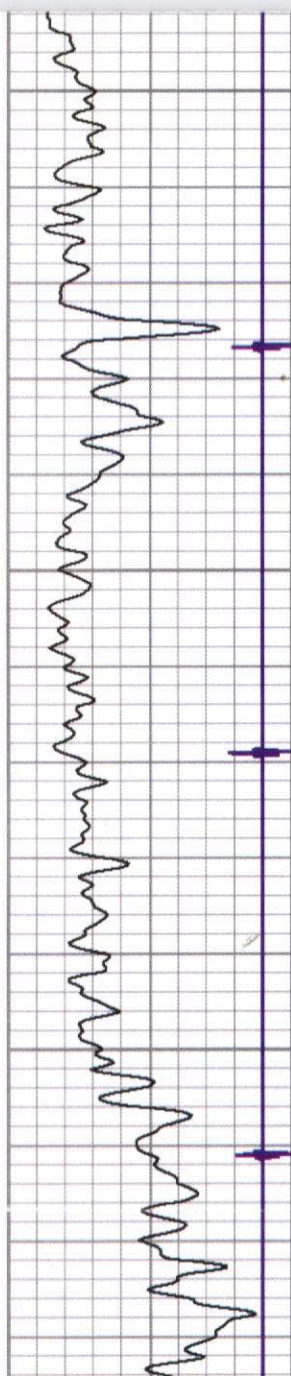


1500

1550

1600

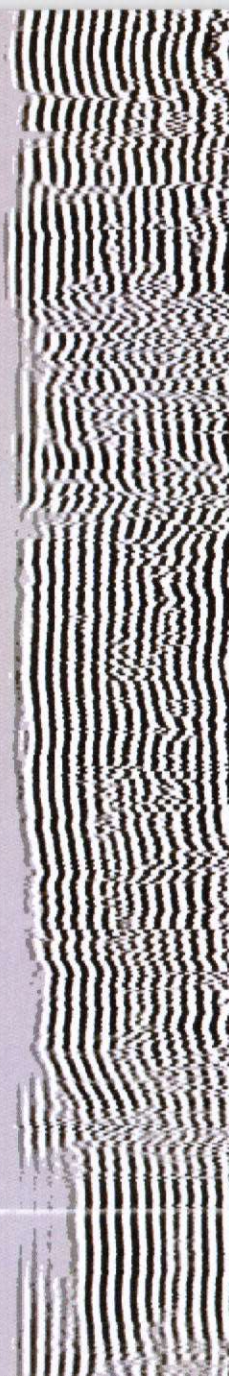
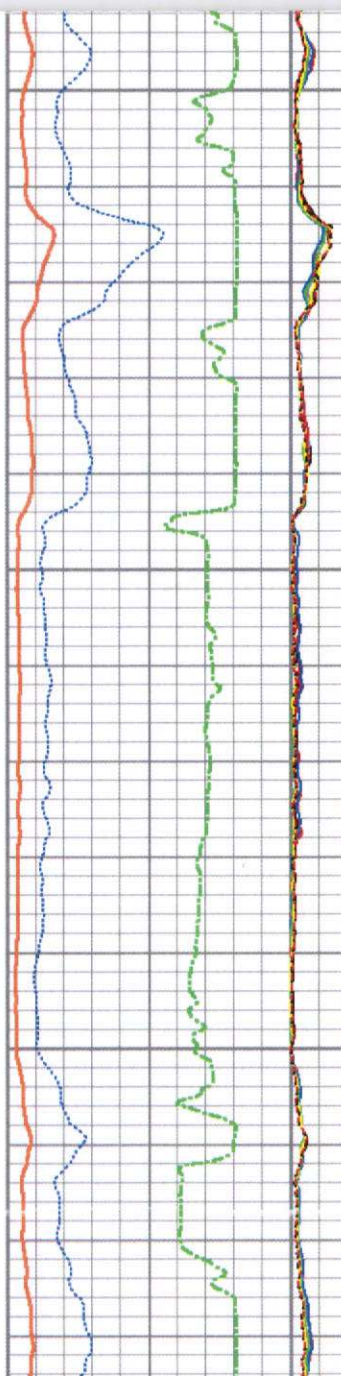


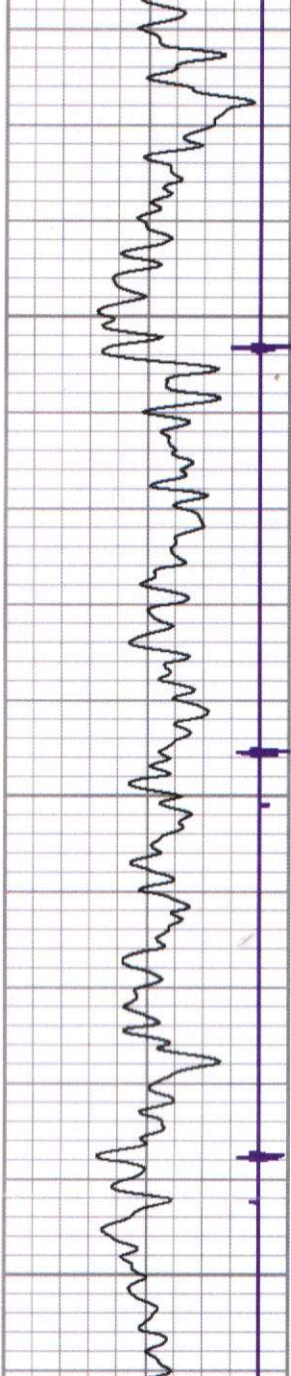


1600

1650

1700

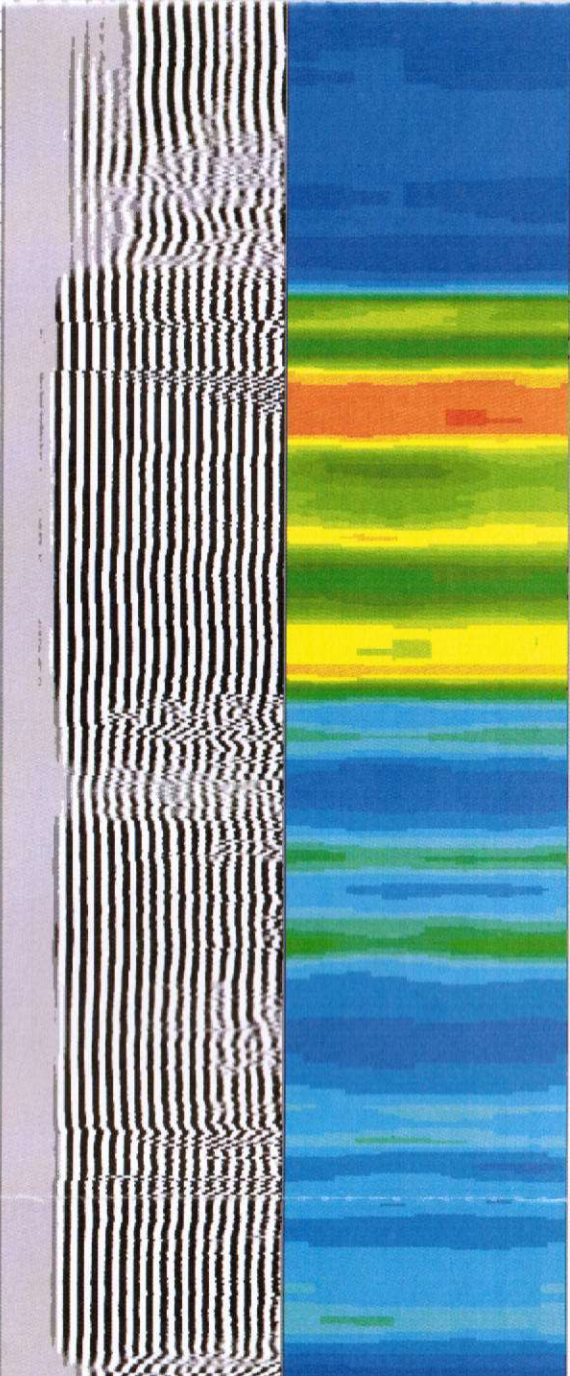
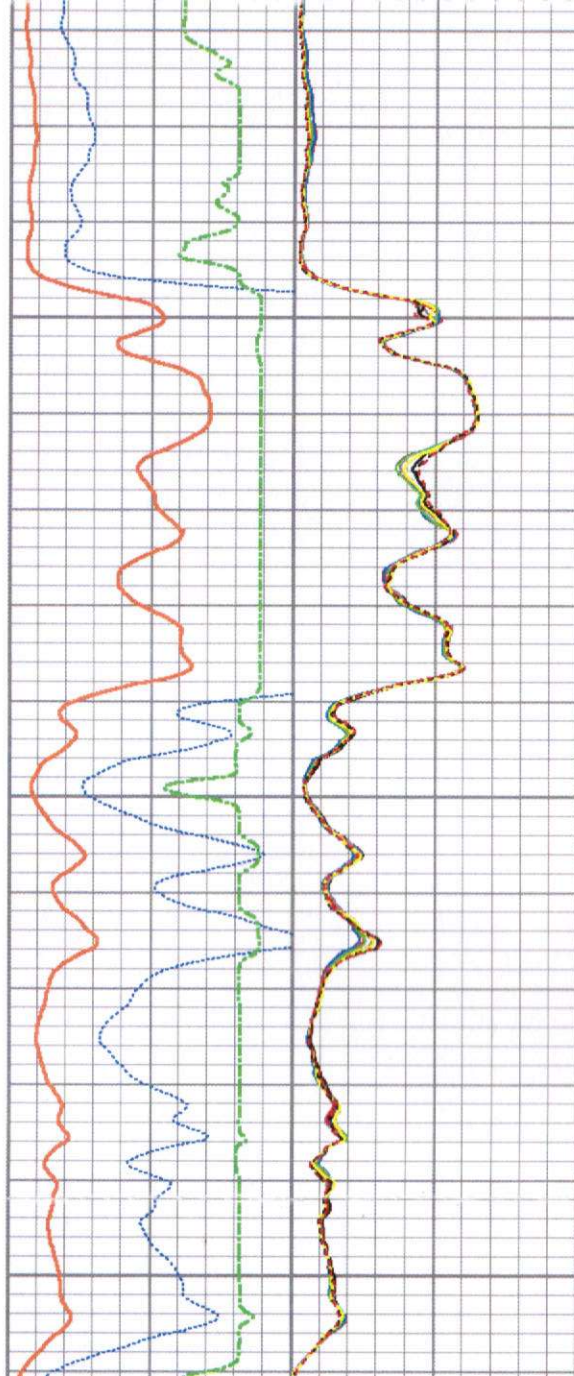


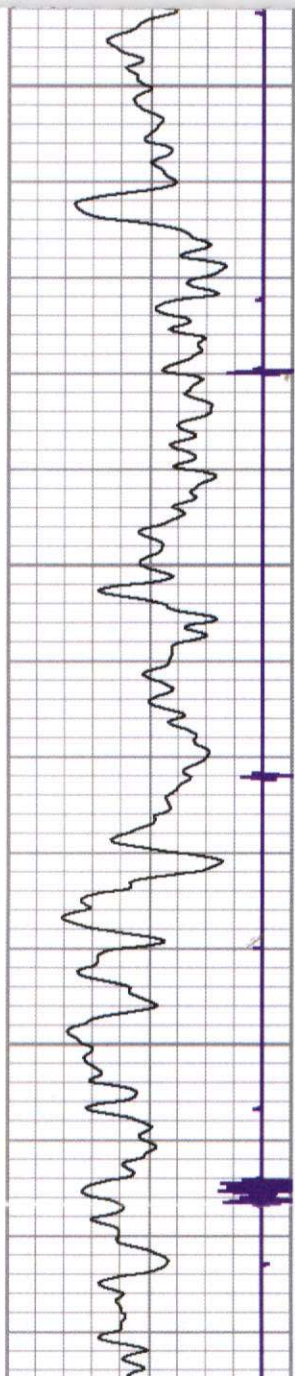


1750

1800

1850

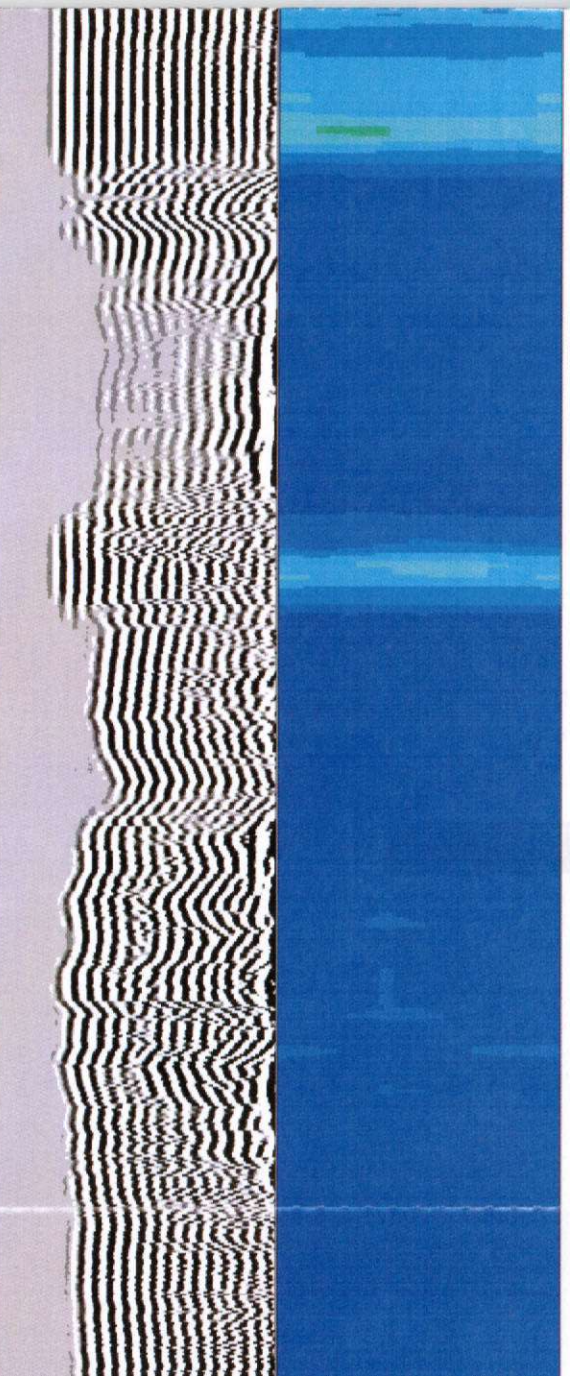
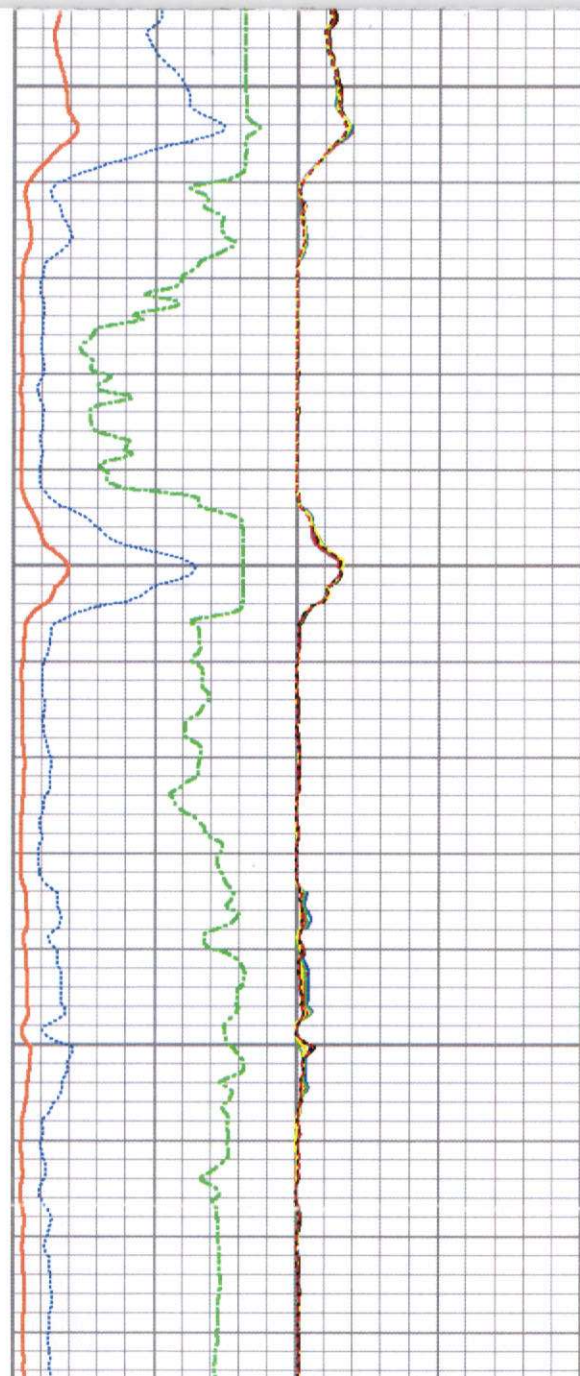


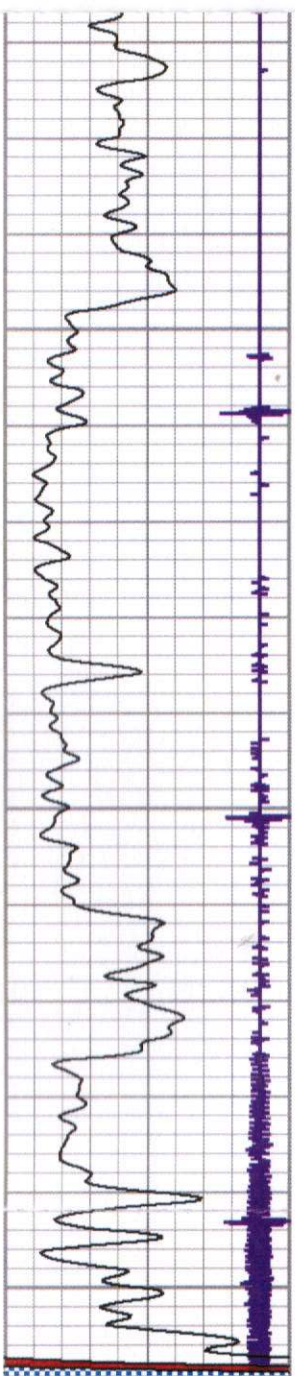


1850

1900

1950

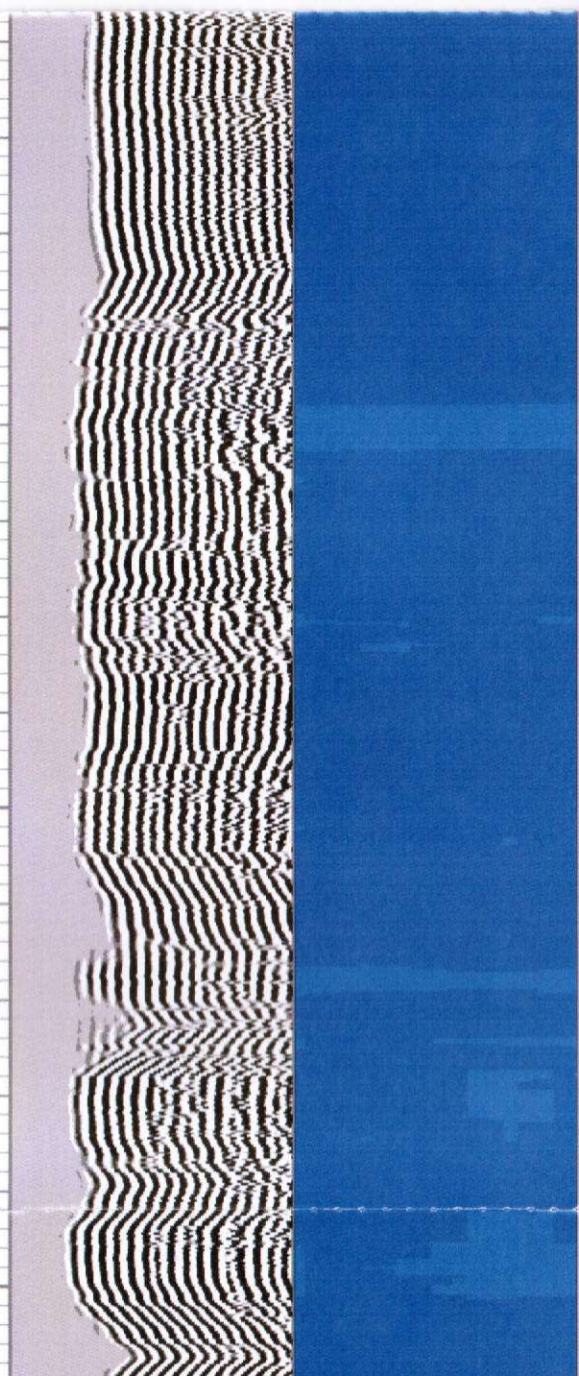
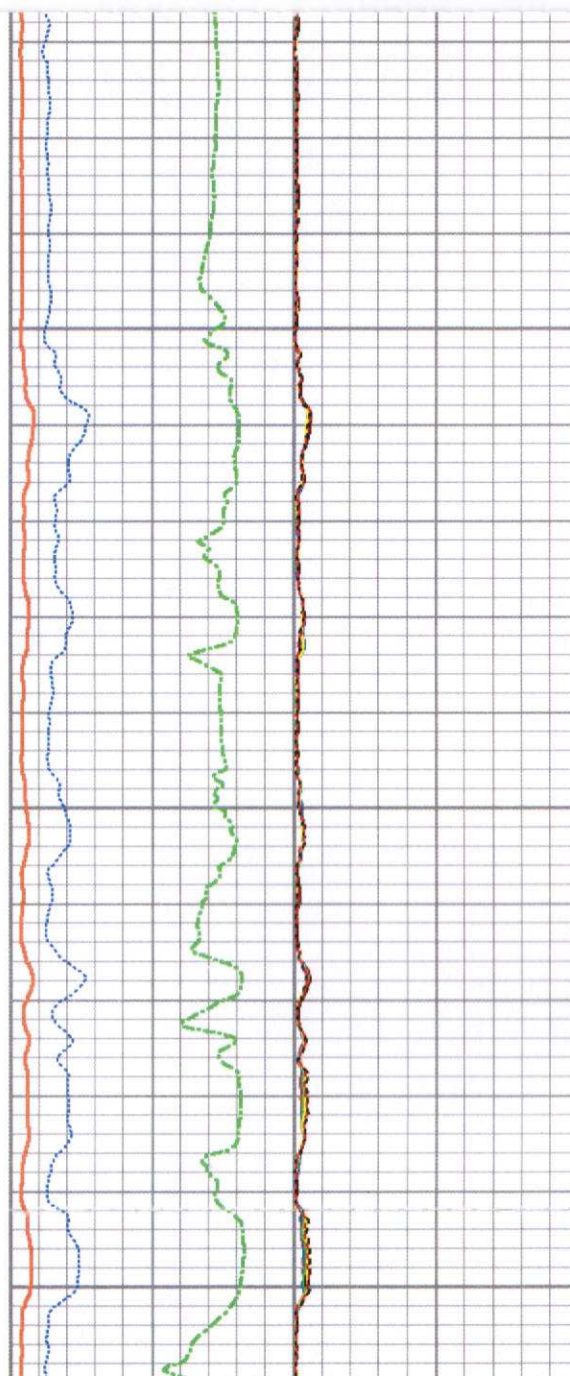


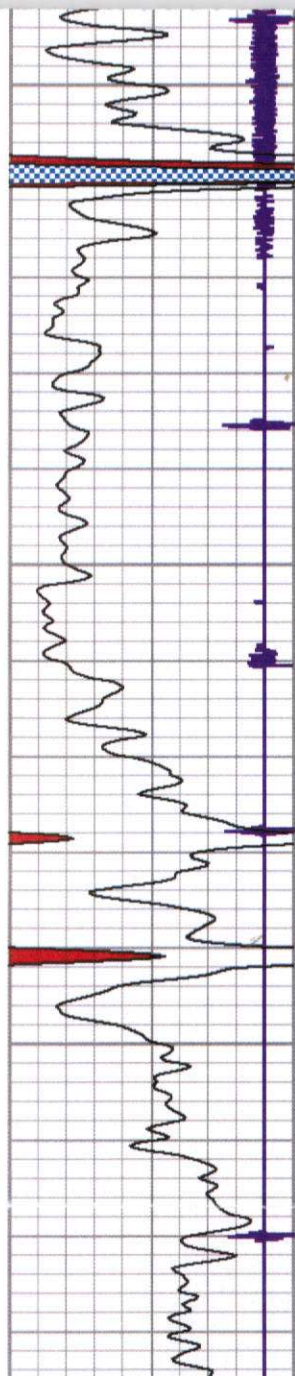


2000

2050

2100

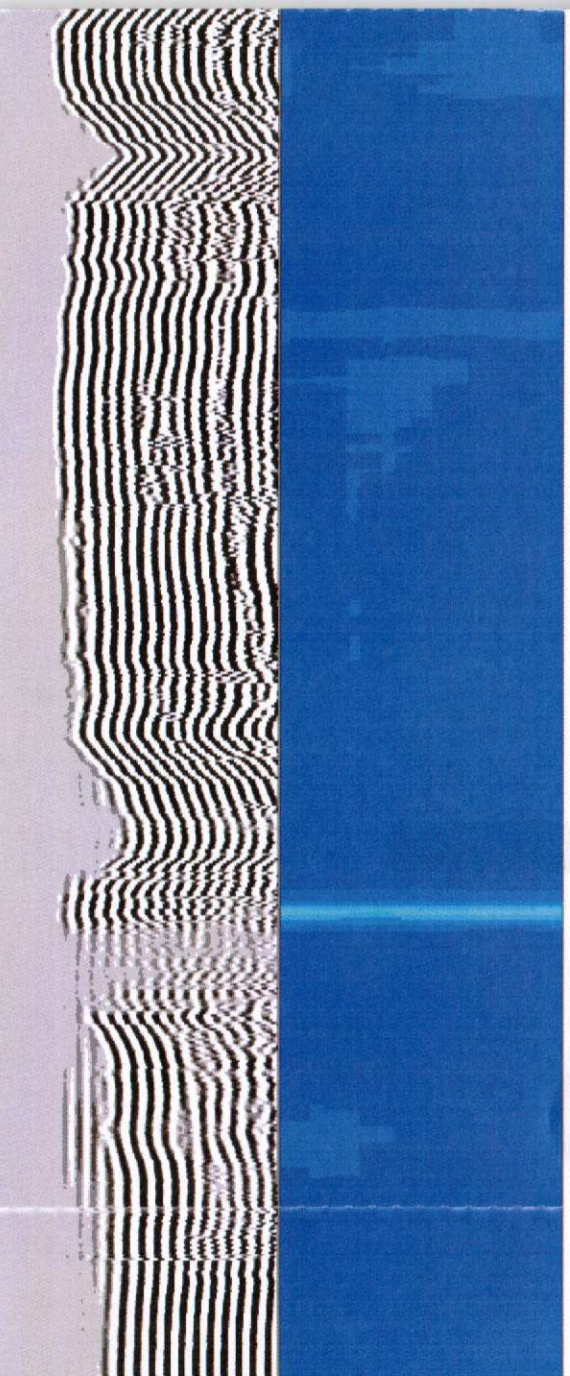
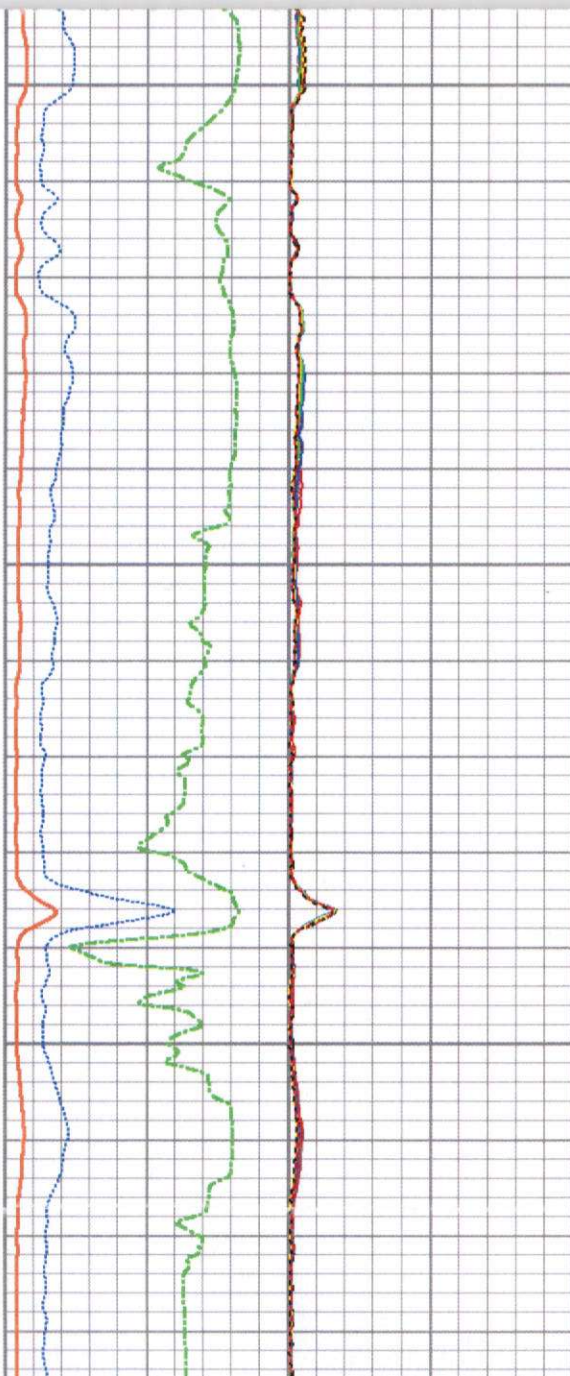


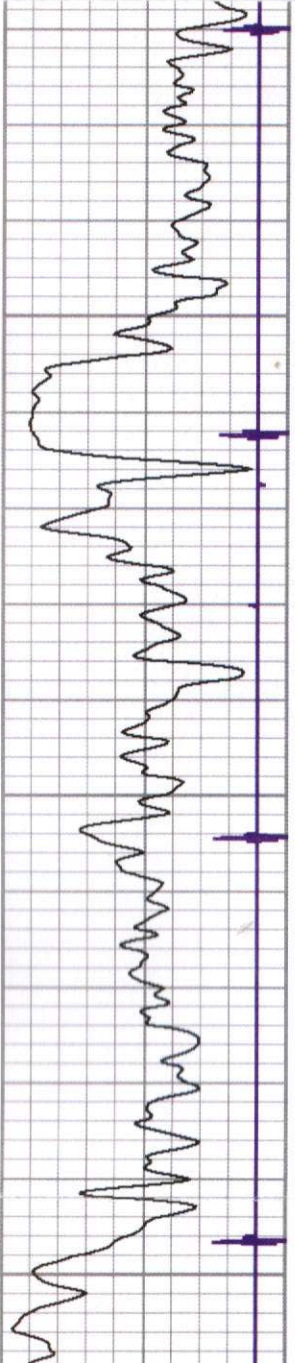


2100

2150

2200

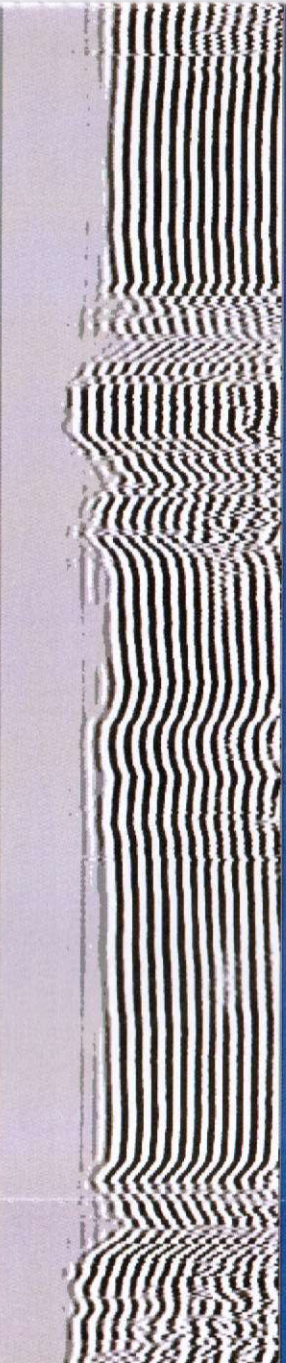
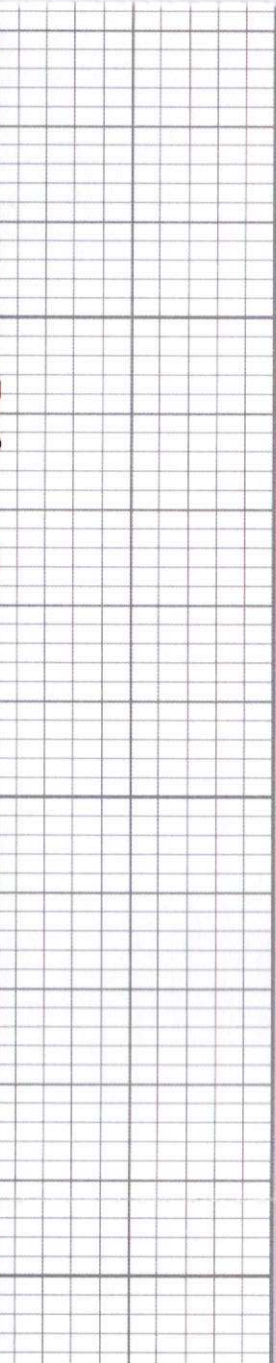
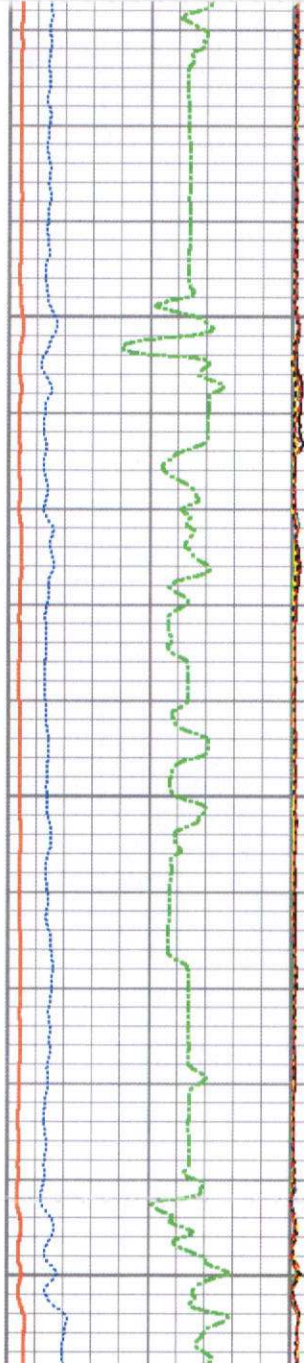


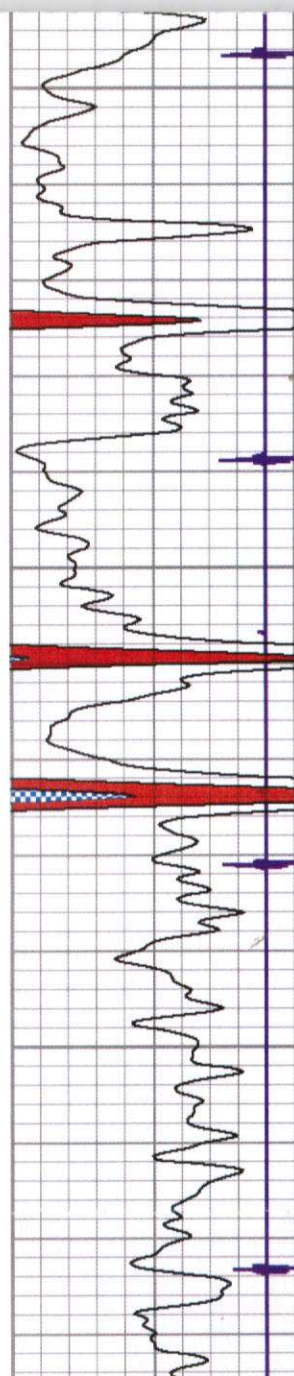


2250

2300

2350

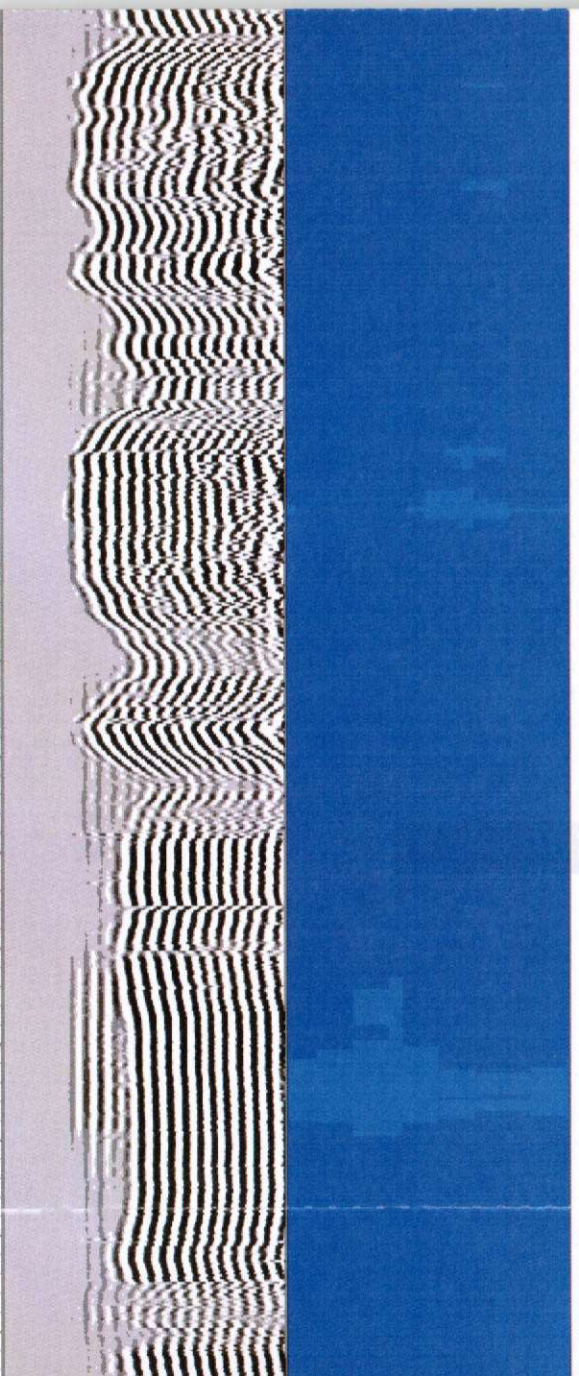
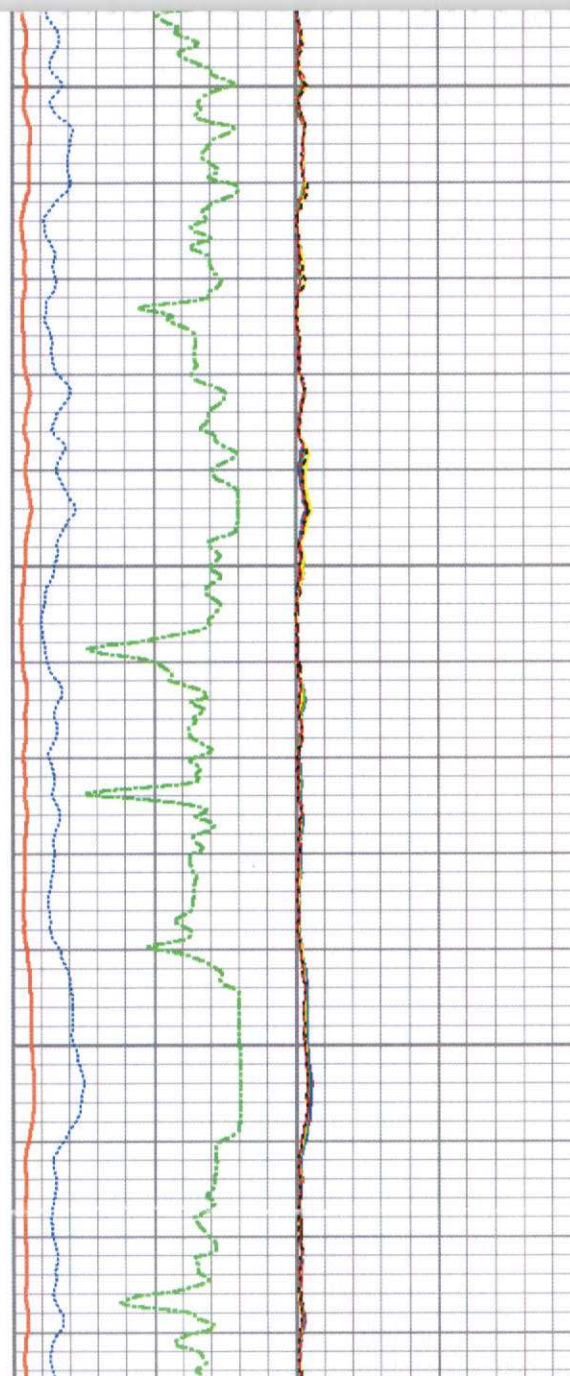


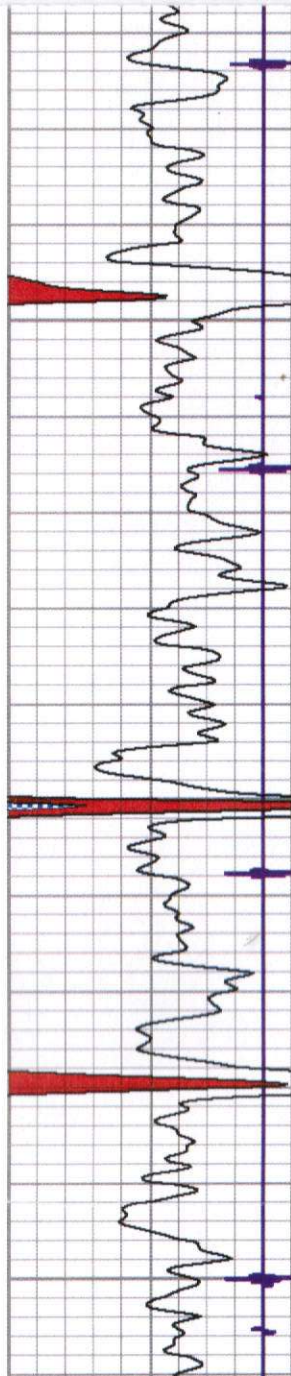


2350

2400

2450

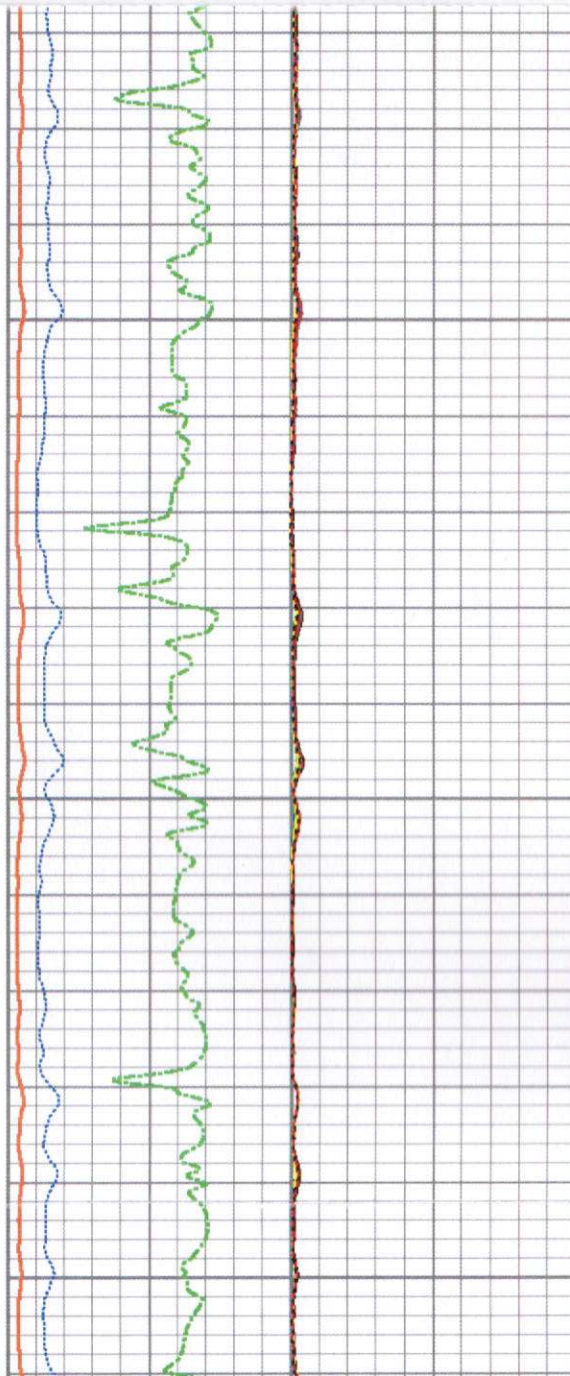


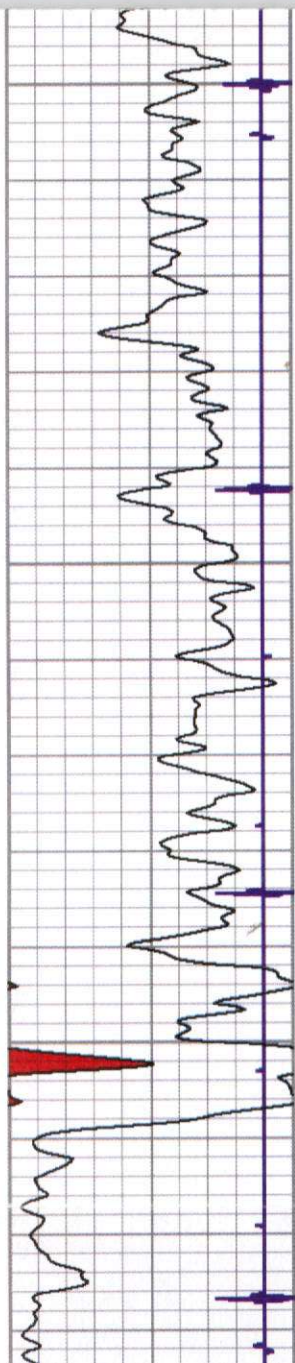


2500

2550

2600

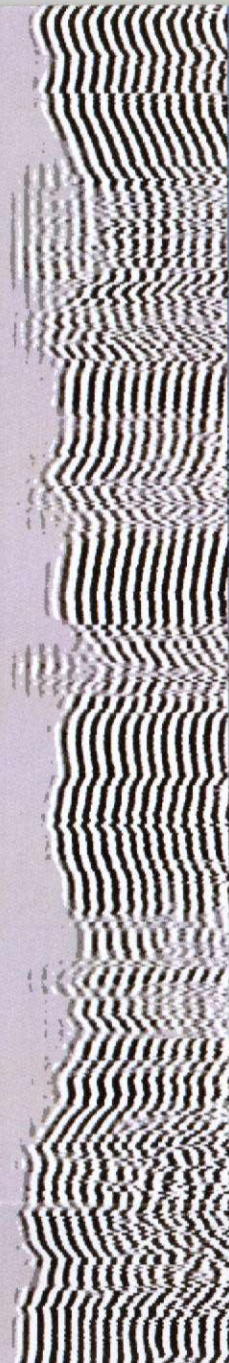
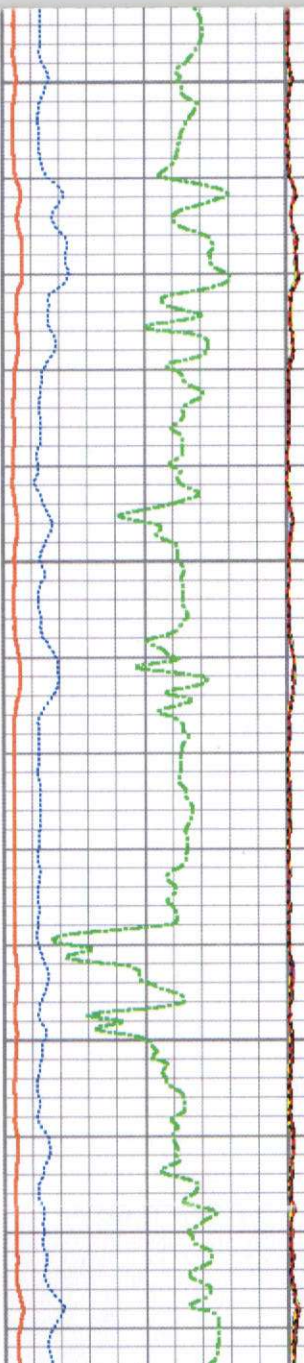


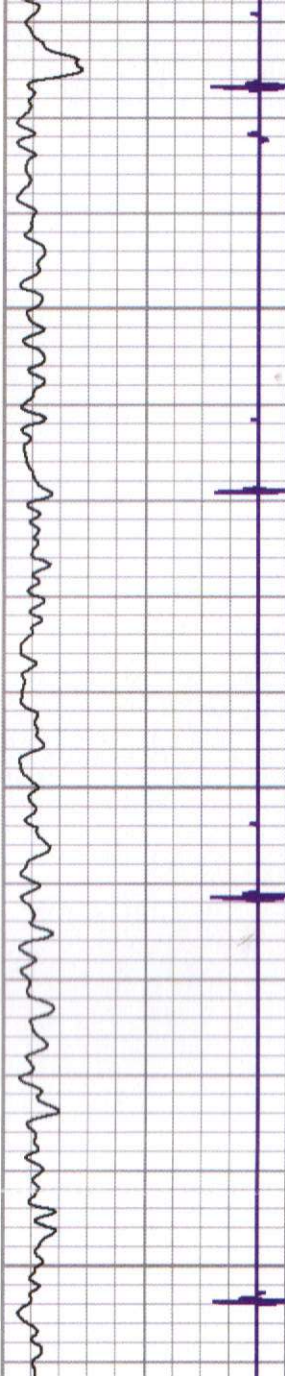


2600

2650

2700

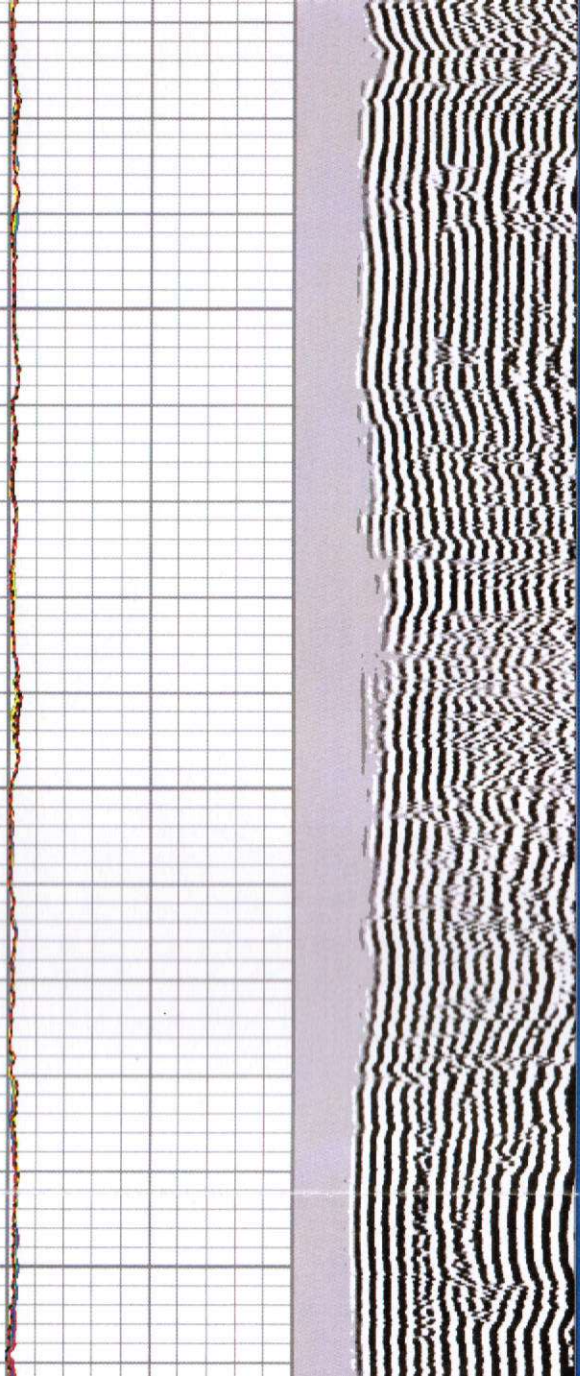
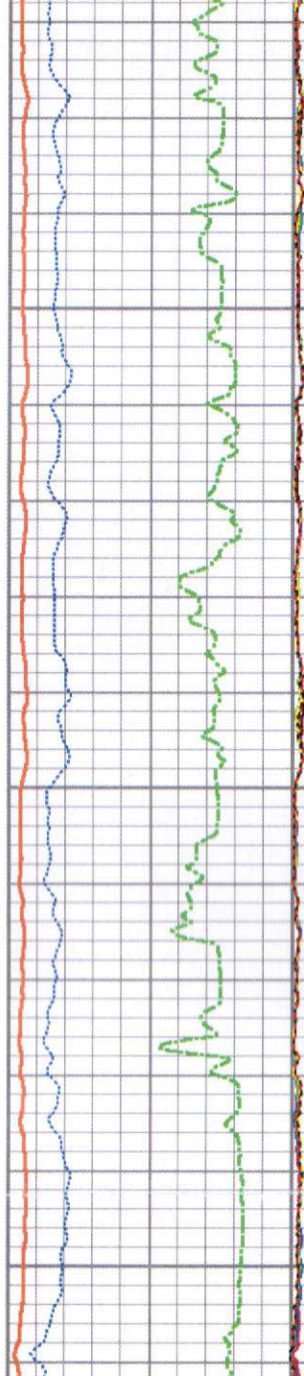


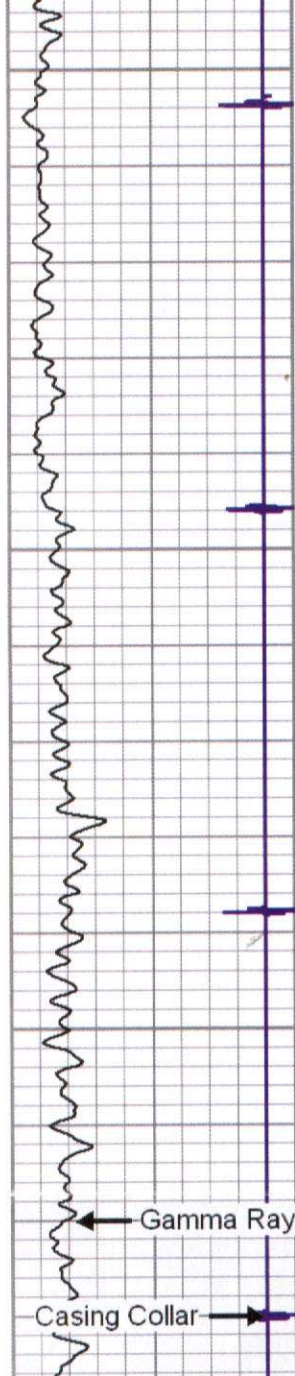


2750

2800

2850





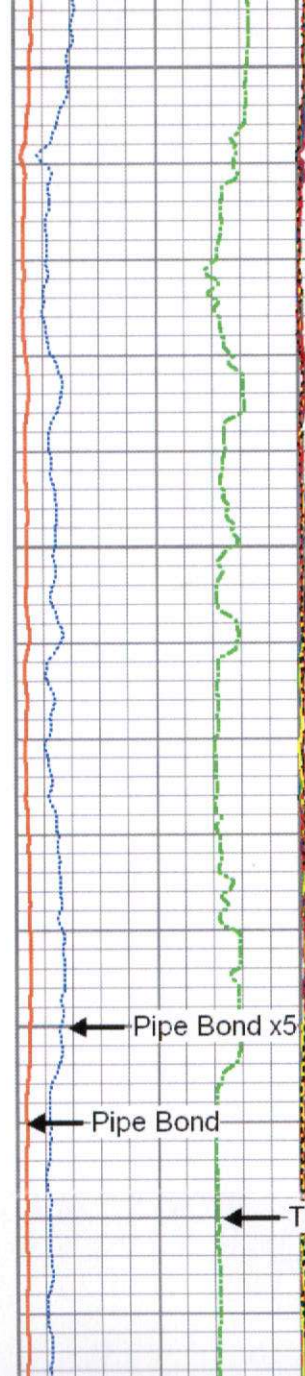
2850

2900

2950

Gamma Ray

Casing Collar

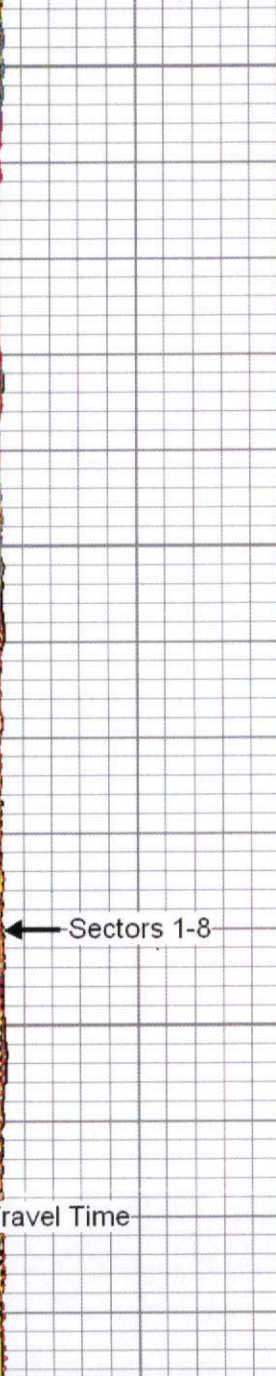


Pipe Bond x5

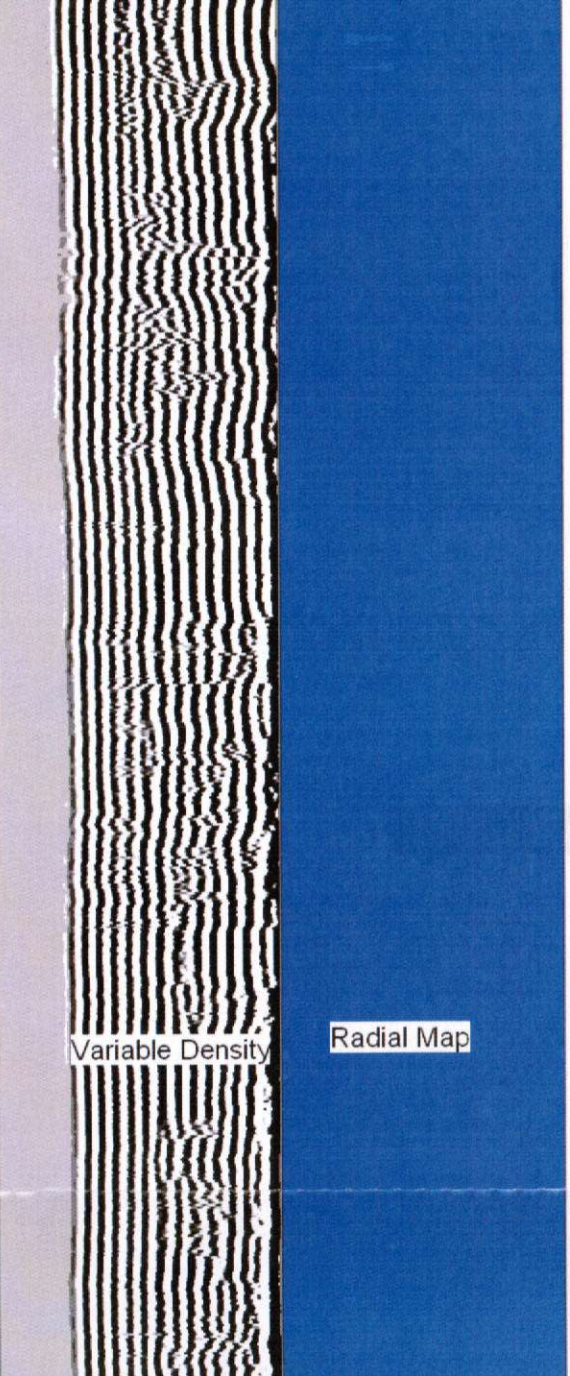
Pipe Bond

Travel Time

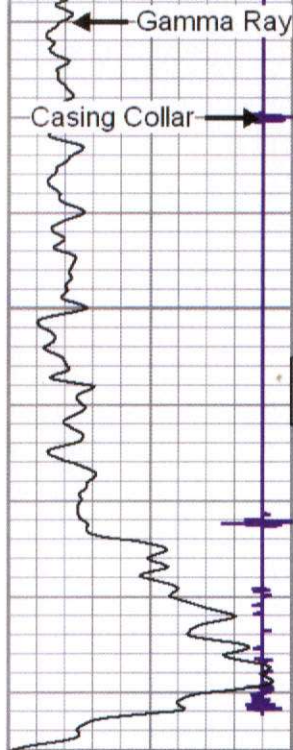
Sectors 1-8



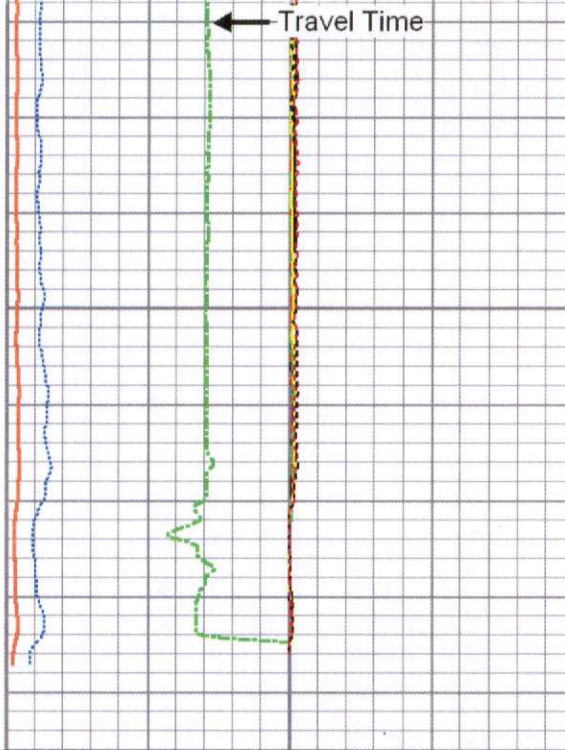
Variable Density



Radial Map

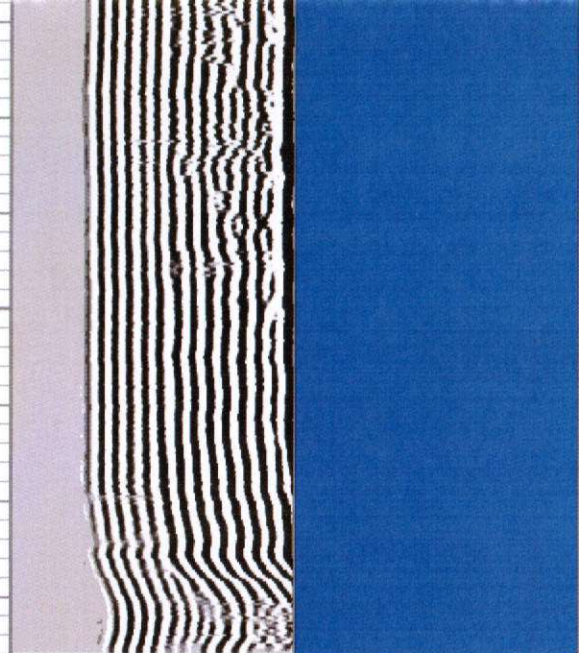


PERFS
10/9/14

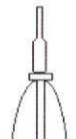


40	Casing Collar -4.5
	Gamma Ray
0	(GAPI) 150

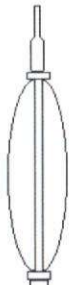

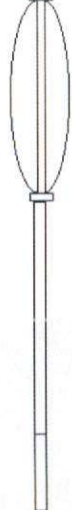
Pipe Bond	0	Sector 1	100
(mV)	100	Sector 2	100
Pipe Bond x5	0	Sector 3	100
(mV)	30	Sector 4	100
Travel Time	0	Sector 5	100
(usec)	200	Sector 6	100
		Sector 7	100
		Sector 8	100



Variable Density	1	Radial Map	8
	200		72

Sensor	Offset (ft)	Schematic	Description	Len (ft)	OD (in)	Wt (lb)
			STNDRD Standard Cable Head	1.00	1.69	10.00

Sensor	Offset (ft)	Schematic	Description	Len (ft)	OD (in)	Wt (lb)
			STNDRD Standard Cable Head	1.00	1.69	10.00
			PROBE	3.17	1.69	10.00
WWF3FT	12.10		RBT-Probe (070131) Prototype Probe Radii Bond Tool with Digital Telemetry	8.33	2.75	90.00
WWFCAL	12.10					
WWFS1	12.10					
WWFS2	12.10					
WWFS3	12.10					
WWFS4	12.10					
WWFS5	12.10					
WWFS6	12.10					
WWFS7	12.10					
WWFS8	12.10					
WWF5FT	11.10	PROBE	3.17	1.69	10.00	
CCL	3.63					
		GR-Probe275dig (080921) Probe Digital Gamma CCL	4.75	2.75	57.00	
GR	0.90					

Sensor	Offset (ft)	Schematic	Description	Len (ft)	OD (in)	Wt (lb)
			STNDRD Standard Cable Head	1.00	1.69	10.00
			PROBE	3.17	1.69	10.00
WV3FT	12.10		RBT-Probe (070131) Prototype Probe Radii Bond Tool with Digital Telemetry	8.33	2.75	90.00
WVFCAL	12.10					
WVFS1	12.10					
WVFS2	12.10					
WVFS3	12.10					
WVFS4	12.10					
WVFS5	12.10					
WVFS6	12.10					
WVFS7	12.10					
WVFS8	12.10					
WV5FT	11.10		PROBE	3.17	1.69	10.00
CCL	3.63		GR-Probe275dig (080921) Probe Digital Gamma CCL	4.75	2.75	57.00
GR	0.90					

GR	0.90		GR-Probe275dig (080921) Probe Digital Gamma CCL	4.75	2.75	57.00
----	------	--	--	------	------	-------

Dataset: ow6-3591 t and r oil denton 15.db: field/well/run1/pass1
 Total Length: 20.42 ft
 Total Weight: 177.00 lb
 O.D.: 2.75 in