



TRILOBITE TESTING, INC

DRILL STEM TEST REPORT

Herman L Loeb LLC
 PO Box 838
 Lawrenceville, IL 62439
 ATTN: Jon Christensen

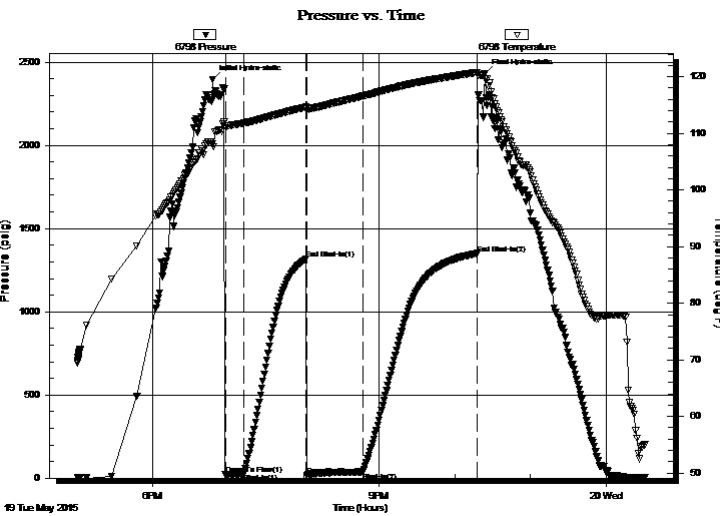
28-27S-18W Kiowa
Yost 3-28
 Job Ticket: 59755 **DST#: 2**
 Test Start: 2015.03.20 @ 17:00:34

GENERAL INFORMATION:

Formation: **Mississippi**
 Deviated: No Whipstock: ft (KB)
 Test Type: Conventional Bottom Hole (Reset)
 Time Tool Opened: 18:57:49 Tester: Leal Cason
 Time Test Ended: 00:30:49 Unit No: 74
 Interval: **4809.00 ft (KB) To 4824.00 ft (KB) (TVD)** Reference Elevations: 2223.00 ft (KB)
 Total Depth: 4824.00 ft (KB) (TVD) 2210.00 ft (CF)
 Hole Diameter: 7.88 inches Hole Condition: Good KB to GR/CF: 13.00 ft

Serial #: 6798 Inside
 Press@RunDepth: 36.36 psig @ 4810.00 ft (KB) Capacity: 8000.00 psig
 Start Date: 2015.05.19 End Date: 2015.05.20 Last Calib.: 2015.05.20
 Start Time: 17:00:35 End Time: 00:30:49 Time On Btm: 2015.05.19 @ 18:47:49
 Time Off Btm: 2015.05.19 @ 22:23:49

TEST COMMENT: IF: Fair Blow , Built to 10 inches
 IS: No Blow Back
 FF: Strong Blow , BOB in 20 seconds
 FS: No Blow Back



PRESSURE SUMMARY

Time (Min.)	Pressure (psig)	Temp (deg F)	Annotation
0	2396.57	108.20	Initial Hydro-static
10	20.75	111.35	Open To Flow (1)
25	25.84	111.79	Shut-In(1)
75	1316.52	114.67	End Shut-In(1)
75	15.39	114.33	Open To Flow (2)
120	36.36	116.58	Shut-In(2)
210	1350.11	120.78	End Shut-In(2)
216	2432.95	119.64	Final Hydro-static

Recovery

Length (ft)	Description	Volume (bbl)
0.00	90 GIP	0.00
30.00	MCO 40%M 60%O	0.15

* Recovery from multiple tests

Gas Rates

Choke (inches)	Pressure (psig)	Gas Rate (Mcf/d)



**TRILOBITE
TESTING, INC**

DRILL STEM TEST REPORT

FLUID SUMMARY

Herman L Loeb LLC
PO Box 838
Lawrenceville, IL 62439
ATTN: Jon Christensen

28-27S-18W Kiowa
Yost 3-28
Job Ticket: 59755 **DST#: 2**
Test Start: 2015.03.20 @ 17:00:34

Mud and Cushion Information

Mud Type: Gel Chem	Cushion Type:	Oil API:	deg API
Mud Weight: 9.00 lb/gal	Cushion Length: ft	Water Salinity:	ppm
Viscosity: 62.00 sec/qt	Cushion Volume: bbl		
Water Loss: 8.78 in ³	Gas Cushion Type:		
Resistivity: ohm.m	Gas Cushion Pressure: psig		
Salinity: 5000.00 ppm			
Filter Cake: 0.02 inches			

Recovery Information

Recovery Table

Length ft	Description	Volume bbl
0.00	90 GIP	0.000
30.00	MCO 40%M 60%O	0.148

Total Length: 30.00 ft Total Volume: 0.148 bbl
Num Fluid Samples: 0 Num Gas Bombs: 0 Serial #:
Laboratory Name: Laboratory Location:
Recovery Comments:

Pressure vs. Time

