



TEMPORARY ABANDONMENT WELL APPLICATION

All blanks must be complete

OPERATOR: License# _____
 Name: _____
 Address 1: _____
 Address 2: _____
 City: _____ State: _____ Zip: _____ + _____
 Contact Person: _____
 Phone: (_____) _____
 Contact Person Email: _____
 Field Contact Person: _____
 Field Contact Person Phone: (_____) _____

API No. 15- _____
 Spot Description: _____
 _____ - _____ - _____ - _____ Sec. _____ Twp. _____ S. R. _____ E W
 _____ feet from N / S Line of Section
 _____ feet from E / W Line of Section
 GPS Location: Lat: _____, Long: _____
(e.g. xx.xxxxx) (e.g. -xxx.xxxxx)
 Datum: NAD27 NAD83 WGS84
 County: _____ Elevation: _____ GL KB
 Lease Name: _____ Well #: _____
 Well Type: (check one) Oil Gas OG WSW Other: _____
 SWD Permit #: _____ ENHR Permit #: _____
 Gas Storage Permit #: _____
 Spud Date: _____ Date Shut-In: _____

	Conductor	Surface	Production	Intermediate	Liner	Tubing
Size						
Setting Depth						
Amount of Cement						
Top of Cement						
Bottom of Cement						

Casing Fluid Level from Surface: _____ How Determined? _____ Date: _____
 Casing Squeeze(s): _____ to _____ w / _____ sacks of cement, _____ to _____ w / _____ sacks of cement. Date: _____
(top) (bottom) (top) (bottom)
 Do you have a valid Oil & Gas Lease? Yes No
 Depth and Type: Junk in Hole at _____ Tools in Hole at _____ Casing Leaks: Yes No Depth of casing leak(s): _____
(depth) (depth)
 Type Completion: ALT. I ALT. II Depth of: DV Tool: _____ w / _____ sacks of cement Port Collar: _____ w / _____ sack of cement
(depth) (depth)
 Packer Type: _____ Size: _____ Inch Set at: _____ Feet
 Total Depth: _____ Plug Back Depth: _____ Plug Back Method: _____

Geological Data:

Formation Name	Formation Top	Formation Base	Completion Information
1. _____	At: _____ to _____ Feet	Perforation Interval _____ to _____ Feet or Open Hole Interval _____ to _____ Feet	
2. _____	At: _____ to _____ Feet	Perforation Interval _____ to _____ Feet or Open Hole Interval _____ to _____ Feet	

UNDER PENALTY OF PERJURY I HEREBY ATTEST THAT THE INFORMATION CONTAINED HEREIN IS TRUE AND CORRECT TO THE BEST OF MY KNOWLEDGE

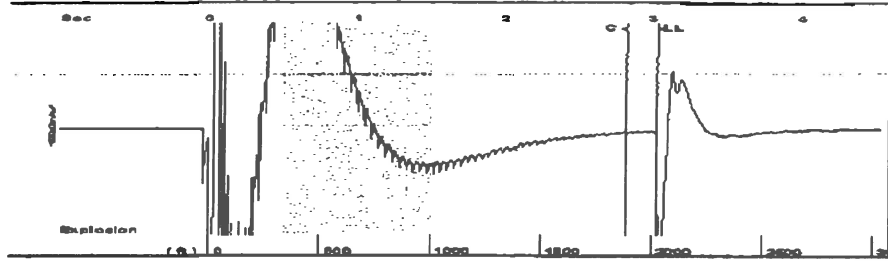
Submitted Electronically

Do NOT Write in This Space - KCC USE ONLY	Date Tested: _____	Results: _____	Date Plugged: _____	Date Repaired: _____	Date Put Back in Service: _____
	Review Completed by: _____ Comments: _____				
TA Approved: <input type="checkbox"/> Yes <input type="checkbox"/> Denied Date: _____					

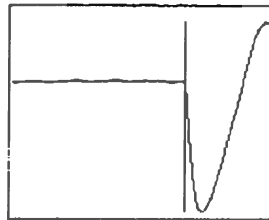
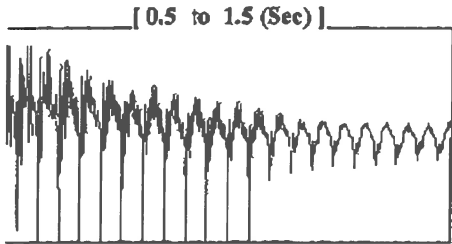
Mail to the Appropriate KCC Conservation Office:

	KCC District Office #1 - 210 E. Frontview, Suite A, Dodge City, KS 67801	Phone 620.225.8888
	KCC District Office #2 / UPGS - 3450 N. Rock Road, Building 600, Suite 601, Wichita, KS 67226	Phone 316.630.4000
	KCC District Office #3 - 1500 SW Seventh Steet, Chanute, KS 66720	Phone 620.432.2300
	KCC District Office #4 - 2301 E. 13th Street, Hays, KS 67601-2651	Phone 785.625.0550

Group: Radium Well: Hahn # 3 (acquired on: 04/23/15 13:26:55)



Filter Type High Pass Automatic Collar Count Yes Time 3.034 sec
 Manual Acoustic Velocity 1331.92 ft/s Manual JTS/sec 21.1416 Joints 64.4009 Jts
 Depth 2028.63 ft

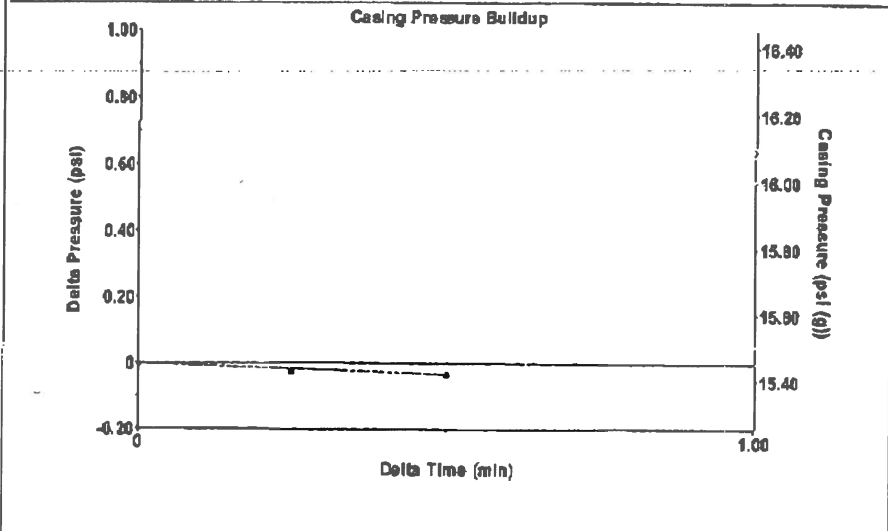


Analysis Method: Automatic

Group: Radium Well: Hahn # 3 (acquired on: 04/23/15 13:26:55)

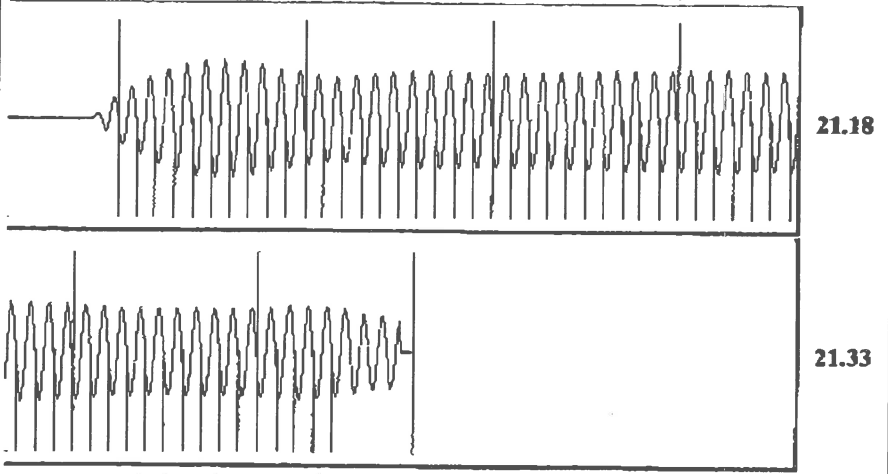
Production Current	Potential	Casing Pressure	Producing
Oil -.-	-.- BBL/D	15.5 psi (g)	
Water -.-	-.- BBL/D	Casing Pressure Buildup	Annular Gas Flow 0 Mscf/D
Gas -.-	-.- Mscf/D	-0.034 psi	% Liquid 100 %
		0.50 min	
IPR Method	Vogel	Gas/Liquid Interface Pressure	
PBHP/SBHP	-.-	16.9 psi (g)	
Production Efficiency	0.0		
Oil 40 deg.API		Liquid Level Depth	
Water 1.05 Sp.Gr.H2O		2028.63 ft	
Gas 0.67 Sp.Gr.AIR		Pump Intake Depth	
		-.- ft	
Acoustic Velocity 1337.26 ft/s		Formation Depth	
		2334.00 ft	
Formation Submergence		Pump Intake	
Total Gaseous Liquid Column HT (TVD)	305 ft	-.- psi (g)	
Equivalent Gas Free Liquid HT (TVD)	305 ft	Producing BHP	
		155.7 psi (g)	
Acoustic Test		Static BHP	
		-.- psi (g)	

Group: Radium Well: Hahn # 3 (acquired on: 04/23/15 13:26:55)



Change in Pressure -0.03 psi PT13440
 Change in Time 0.50 min Range 0 - 7 psi

Group: Radium Well: Hahn # 3 (acquired on: 04/23/15 13:26:55)



Acoustic Velocity	1337.26 ft/s	Joints counted	54
Joints Per Second	21.2264 jts/sec	Joints to liquid level	64.4009
Depth to liquid level	2028.63 ft	Filter Width	19.1416
Automatic Collar Count	Yes	Time to 1st Collar	0.284
			2.828

Conservation Division
District Office No. 4
2301 E. 13th Street
Hays, KS 67601-2651



Phone: 785-625-0550
Fax: 785-625-0564
<http://kcc.ks.gov/>

Shari Feist Albrecht, Chair
Jay Scott Emler, Commissioner
Pat Apple, Commissioner

Sam Brownback, Governor

April 30, 2015

Loveness Mpanje
F. G. Holl Company L.L.C.
9431 E CENTRAL STE 100
WICHITA, KS 67206-2563

Re: Temporary Abandonment
API 15-009-19044-00-01
HAHN 3
SE/4 Sec.33-20S-14W
Barton County, Kansas

Dear Loveness Mpanje:

"Your temporary abandonment (TA) application for the well listed above has been approved. In accordance with K.A.R. 82-3-111 the TA status of this well will expire 04/30/2016.

- * If you return this well to service or plug it, please notify the District Office.
- * If you sell this well you are required to file a Transfer of Operator form, T-1.
- * If the well will remain temporarily abandoned, you must submit a new TA application, CP-111, before 04/30/2016.

You may contact me at the number above if you have questions.

Very truly yours,

RICHARD WILLIAMS"