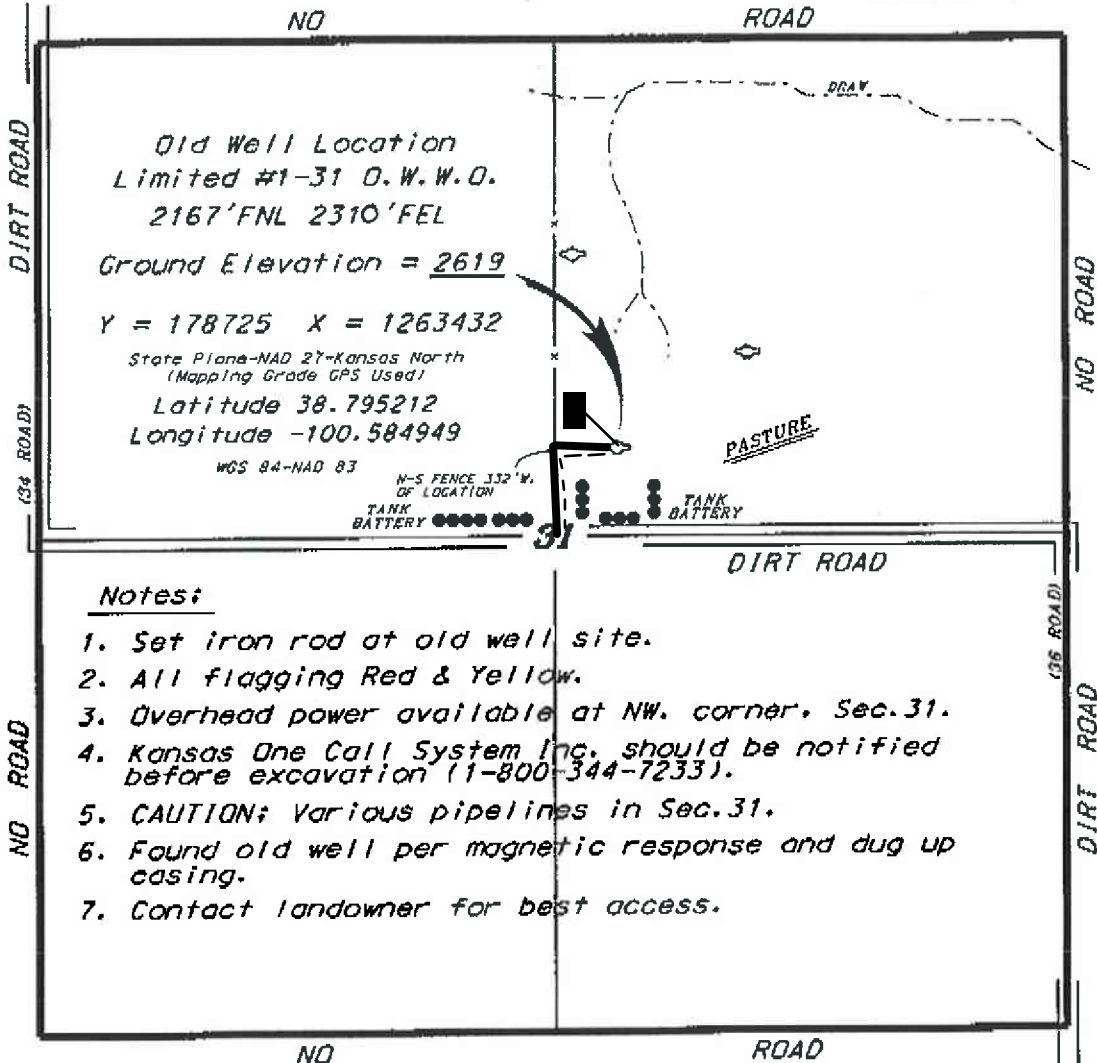
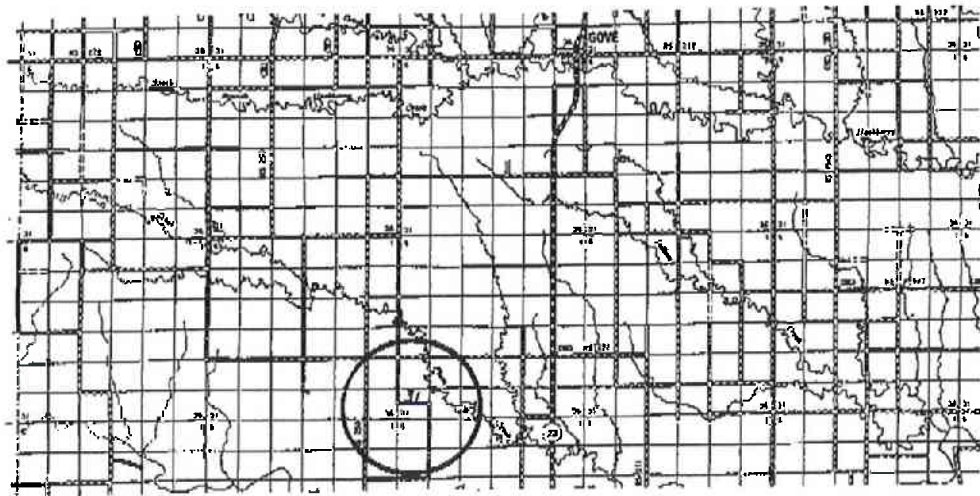


**L.D. DRILLING, INC.
LIMITED LEASE
NE-1/4, SECTION 31, T14S, R29W
GOVE COUNTY, KANSAS**

Directions:
From the intersection of Highway 23 and a E-W county road in Gove, Kansas, go 5.70 miles West to a three-way intersection, then go 11.0 miles South on a county road to the NW corner of Section 31, then go 0.50 miles South, then go 0.56 miles East, then go 0.08 miles North to location.



*Ingress and egress to location as shown on this plat is for usage only and may not be legally opened for public use. Contact landowner, tenant and county road department for access.



Controlling data is based upon the best maps and photographs available to us and upon a regular section of land containing 360 acres.
Approximate section lines were determined using the normal standards of care of oilfield surveyors practicing in the state of Kansas. The section corners, which establish the precise section lines, were not necessarily located, and the exact location of the well site location in the section is not guaranteed. Therefore, the operator assuming this service and accepting this plat and all other parties relying thereon agree to hold Central Kansas Oilfield Services, Inc., its officers and employees harmless from all losses, costs and expenses and hold harmless released from any liability from incidental or consequential damages.
Elevations derived from National Geodetic Vertical Datum.

Date March 31, 2015