

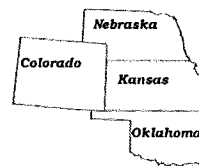
350835L
CRD NO.

PRO-STAKE

LLC

Construction Site Staking

12532
INVOICE NO.



P.O. Box 2324 Garden City, Kansas 67846
Office/Fax: (620) 276-6159 - Cell: (620) 272-1499
burt@pro-stakellc.ksoxmail.com

Val Energy, Inc.
OPERATOR

Thomas County, KS
COUNTY

2 8s 36w
Sec. Twp. Rng.

Biggs #1-2
LEASE NAME

Main = 2294' FNL - 2272' FEL = 3285.9' = gr. elev.
Alt. #1 = 2269' FNL - 1982' FEL = 3307.5' = gr. elev.
Alt. #2 = 2293' FNL - 1965' FEL = 3307.3' = gr. elev.

LOCATION SPOT

SCALE: 1" = 1000'

DATE STAKED: Mar. 26th, 2015

MEASURED BY: Kent C.

DRAWN BY: Norby S.

AUTHORIZED BY: Todd A.

DATE REVISED:



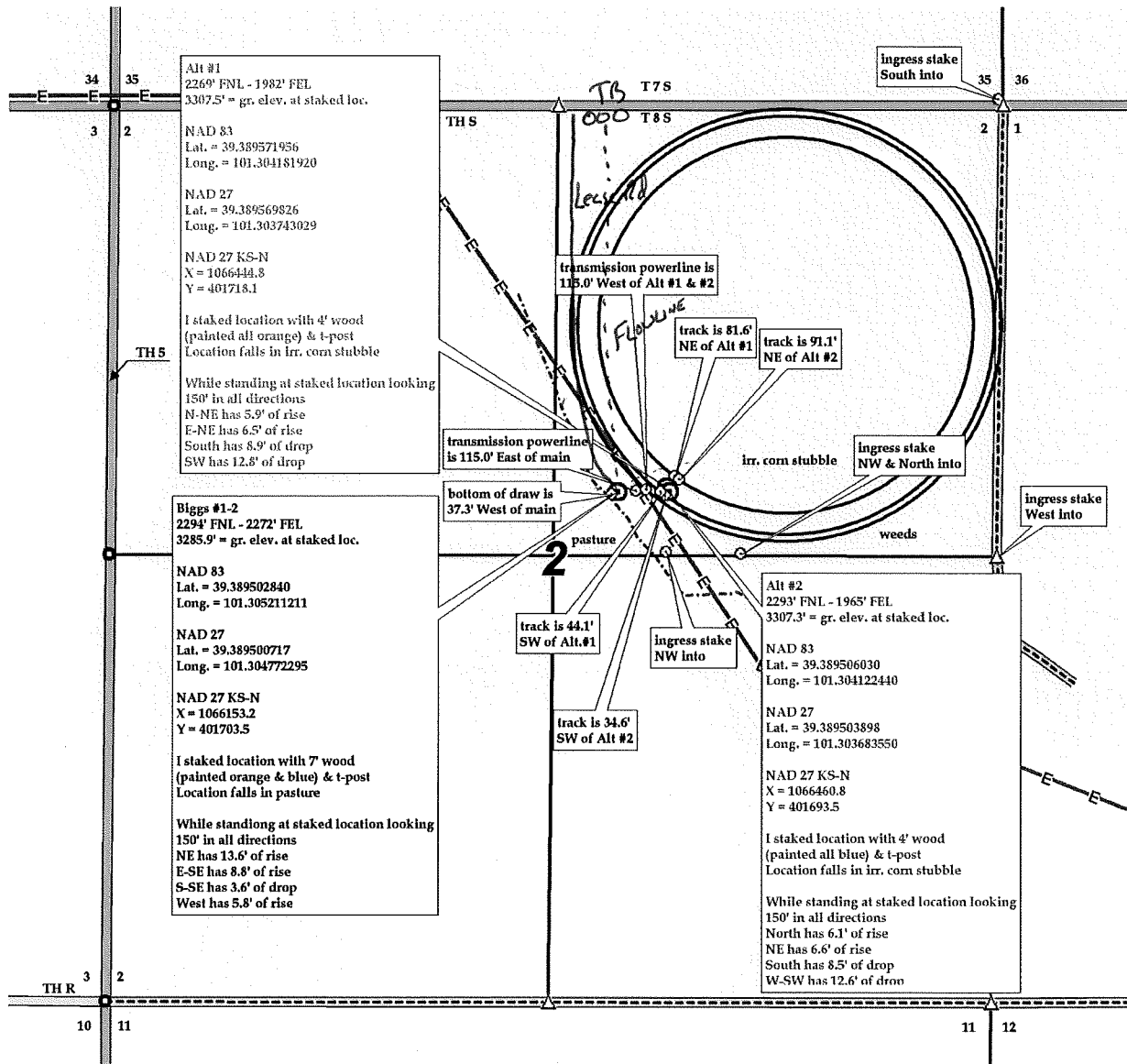
LEGEND

- ⊙ irr. well
- ⊕ water hydrant
- ⊙ tank battery
- ⊙ staked loc.
- ⊗ prod. well/aband. well
- house
- building
- G— gas line
- W— water line
- E— transmission powerline
- 3— 3 phase powerline
- 1— single phase powerline
- X—X— fence
- ▨ gravel/sand rd.
- ▨ gravel trail/lease rd.
- ▨ dirt rd.
- ▨ dirt trail/lease rd.
- ▨ Hwy/blacktop rd.

DIRECTIONS: From the SE side of Brewster, KS at the intersection of Hwy 184 and Old US Hwy 24 - Now go 3 miles East on Old US Hwy 24 - Now go 2 miles North on TH 5 to the NW corner of section 2-8s-36w - Now go 1 mile East on TH S to ingress stake South into - Now go 0.5 mile South on trail to ingress stake West into - Now go approx. 1750' West through weeds to ingress stake NW into - Now go approx. 630' NW through pasture, into main staked location.

Final ingress must be verified with landowner or operator.

*This drawing does not constitute a monumented survey or a land survey plat.
This drawing is for construction purposes only.*



Alt #1
2269' FNL - 1982' FEL
3307.5' = gr. elev. at staked loc.

NAD 83
Lat. = 39.389571956
Long. = 101.304181920

NAD 27
Lat. = 39.389569826
Long. = 101.303743029

NAD 27 KS-N
X = 1066444.3
Y = 401718.1

I staked location with 4' wood
(painted all orange) & t-post
Location falls in irr. corn stubble

While standing at staked location looking
150' in all directions
N-NE has 5.9' of rise
E-NE has 6.5' of rise
South has 8.9' of drop
SW has 12.8' of drop

Biggs #1-2
2294' FNL - 2272' FEL
3285.9' = gr. elev. at staked loc.

NAD 83
Lat. = 39.389502840
Long. = 101.305211211

NAD 27
Lat. = 39.389500717
Long. = 101.304772295

NAD 27 KS-N
X = 1066153.2
Y = 401703.5

I staked location with 7' wood
(painted orange & blue) & t-post
Location falls in pasture

While standing at staked location looking
150' in all directions
NE has 13.6' of rise
E-SE has 8.8' of rise
S-SE has 3.6' of drop
West has 5.8' of rise

Alt #2
2293' FNL - 1965' FEL
3307.3' = gr. elev. at staked loc.

NAD 83
Lat. = 39.389506030
Long. = 101.304122440

NAD 27
Lat. = 39.389503898
Long. = 101.303683550

NAD 27 KS-N
X = 1066460.8
Y = 401693.5

I staked location with 4' wood
(painted all blue) & t-post
Location falls in irr. corn stubble

While standing at staked location looking
150' in all directions
North has 6.1' of rise
NE has 6.6' of rise
South has 8.5' of drop
W-SW has 12.6' of drop