



TRILOBITE TESTING, INC.

DRILL STEM TEST REPORT

Samuel Gary Jr. & Associates Inc.

18/10s/30w Sheridan KS

1515 Wynkoop STE 700
Denver, CO 80202

Ottley #1-18

Job Ticket: 60837

DST#: 1

ATTN: Clayton Camozzi

Test Start: 2014.12.17 @ 16:35:00

GENERAL INFORMATION:

Formation: **LKC "D"**

Deviated: No Whipstock: ft (KB)

Time Tool Opened: 18:40:00

Time Test Ended: 00:12:30

Test Type: Conventional Bottom Hole (Initial)

Tester: James Winder

Unit No: 83

Interval: 4060.00 ft (KB) To 4082.00 ft (KB) (TVD)

Reference Elevations: 2941.00 ft (KB)

Total Depth: 4082.00 ft (KB) (TVD)

2933.00 ft (CF)

Hole Diameter: 7.88 inches Hole Condition: Fair

KB to GR/CF: 8.00 ft

Serial #: 8791

Inside

Press@RunDepth: 79.23 psig @ 4061.00 ft (KB)

Capacity: 8000.00 psig

Start Date: 2014.12.17

End Date:

2014.12.18

Last Calib.:

2014.12.18

Start Time:

16:35:05

End Time:

00:12:29

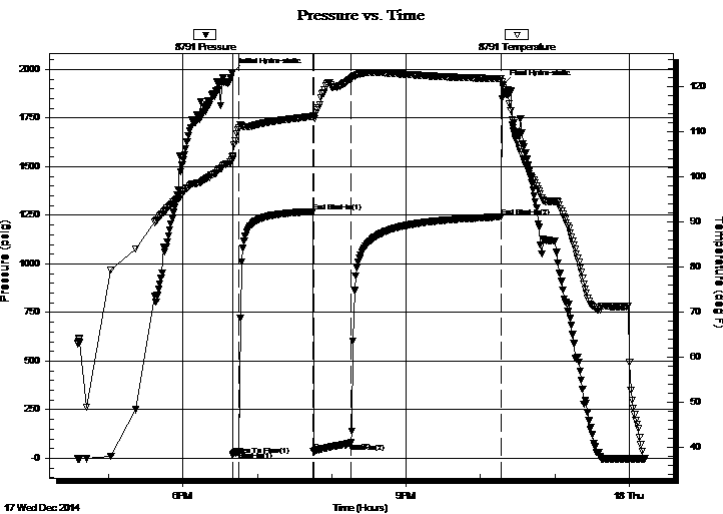
Time On Btm:

2014.12.17 @ 18:39:45

Time Off Btm:

2014.12.17 @ 22:18:00

TEST COMMENT: 5 - IF: Blow built to 3 1/2" (Diesel in bucket)
60 - ISI: Surface blow back, lasted about 15 min., then dead
30 - FF: Blow built to BOB (11") at 27 1/2 min.
120 - FSI: Surface blow back at 15 min., lasted about 10 min., then dead



PRESSURE SUMMARY

Time (Min.)	Pressure (psig)	Temp (deg F)	Annotation
0	1983.97	104.33	Initial Hydro-static
1	16.99	103.88	Open To Flow (1)
6	34.06	110.81	Shut-In(1)
65	1269.42	113.41	End Shut-In(1)
66	37.86	113.07	Open To Flow (2)
96	79.23	121.70	Shut-In(2)
217	1242.36	121.77	End Shut-In(2)
219	1922.35	120.49	Final Hydro-static

Recovery

Length (ft)	Description	Volume (bbl)
130.00	MCW w/trace oil 70%w, 30%m	1.54
10.00	SMCO 93%o, 5%m, 2%g	0.14

Gas Rates

	Choke (inches)	Pressure (psig)	Gas Rate (Mcf/d)



**TRILOBITE
TESTING, INC**

DRILL STEM TEST REPORT

FLUID SUMMARY

Samuel Gary Jr. & Associates Inc.

18/10s/30w Sheridan KS

1515 Wynkoop STE 700
Denver, CO 80202

Ottley #1-18

Job Ticket: 60837

DST#: 1

ATTN: Clayton Camozzi

Test Start: 2014.12.17 @ 16:35:00

Mud and Cushion Information

Mud Type: Gel Chem

Cushion Type:

Oil API:

33.2 deg API

Mud Weight: 9.00 lb/gal

Cushion Length:

ft

Water Salinity:

63000 ppm

Viscosity: 60.00 sec/qt

Cushion Volume:

bbbl

Water Loss: 7.98 in³

Gas Cushion Type:

Resistivity: ohm.m

Gas Cushion Pressure:

psig

Salinity: 700.00 ppm

Filter Cake: 1.00 inches

Recovery Information

Recovery Table

Length ft	Description	Volume bbl
130.00	MCW w /trace oil 70%w , 30%m	1.541
10.00	SMCO 93%o, 5%m, 2%g	0.140

Total Length: 140.00 ft Total Volume: 1.681 bbl

Num Fluid Samples: 0

Num Gas Bombs: 0

Serial #:

Laboratory Name:

Laboratory Location:

Recovery Comments: Gravity = 31.2 api @ 40 deg F Corrected Gravity = 33.2 api
RW = .245 ohms @ 34.8 def F Chlorides = 63,000 ppm

