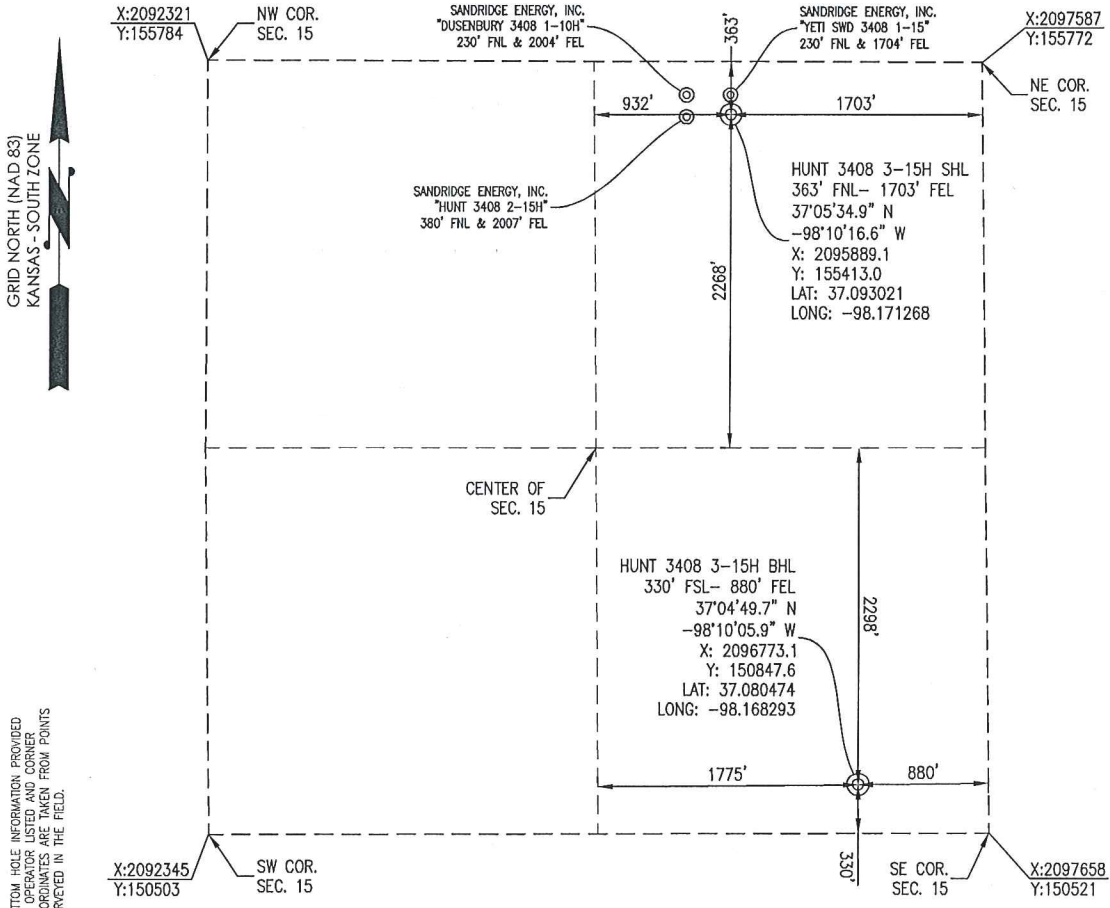




HARPER COUNTY, KANSAS

363' FNL- 1703' FEL SECTION 15 TOWNSHIP 34S RANGE 08W 6TH P.M.



GRID NORTH (NAD 83)
KANSAS - SOUTH ZONE

BOTTOM HOLE INFORMATION PROVIDED
BY OPERATOR LISTED AND CORNER
COORDINATES ARE TAKEN FROM POINTS
SURVEYED IN THE FIELD.

ELEVATION:
1387' GR. AT STAKE

OPERATOR: SANDRIDGE ENERGY, INC. WELL NO: 3-15H

LEASE NAME: HUNT 3408

TOPOGRAPHIC & VEGETATION: LOCATION FELL IN A FIELD

GOOD DRILL SITE: YES REFERENCE STAKES OR ALTERNATE LOCATION STAKES SET: NONE

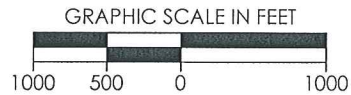
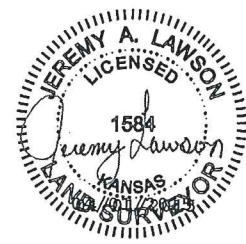
BEST ACCESSIBILITY TO LOCATION: NORTH LINE

DISTANCE & DIRECTION FROM HWY JCT OR TOWN: FROM THE JCT. OF OK-2 & SW 70 AVE (±7.5 MILES WEST OF ANTHONY, KS) TRAVEL SOUTH ON SW 70 AVE FOR ±4.0 MILES TO THE NORTHEAST CORNER OF SECTION 15, T34S-R08W.

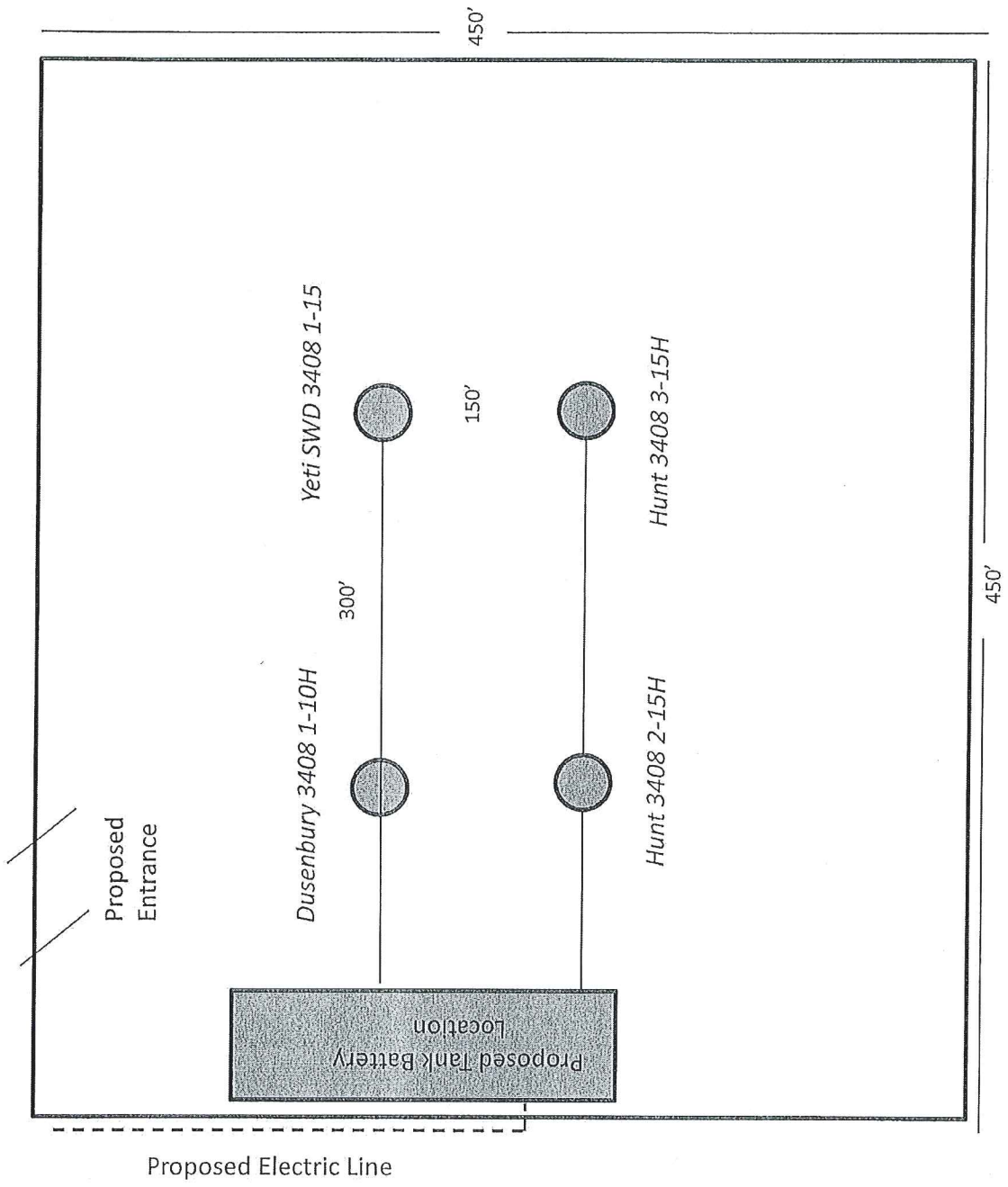
(THE FOLLOWING INFORMATION WAS GATHERED USING A GPS RECEIVER ACCURACY ±2-3 METERS) GPS DATUM: NAD-27 LAT: 37.093021 LONG: -98.171268 STATE PLANE COORDINATES: ZONE: KS-SOUTH NAD-27 X: 2095889.1 Y: 155413.0

DATE STAKED: 04-01-15

GENERAL NOTES: THE TIES AND FOOTAGES SHOWN ON THIS PLAT ARE FROM LINES OF OCCUPATION FROM A SURVEY MADE ON THE GROUND AND / OR BEARING AND DISTANCES FROM THE GENERAL LAND OFFICE PLAT OF THE AREA SHOWN AND MAY NOT BE THE ACTUAL PROPERTY CORNERS. THIS PLAT DOES NOT REPRESENT A TRUE BOUNDARY SURVEY. DRILL SITE CONDITION DETERMINATIONS WERE MADE BY SANDRIDGE ENERGY INC. REPRESENTATIVES.



REVISION		SandRidge	
△	MOVED SHL 4-1-15	"HUNT 3408 3-15H" PART OF THE NE1/4 OF SECTION 15, T-34-S, R-08-W PROPOSED DRILL SITE HARPER COUNTY, KANSAS	
SCALE: 1" = 1000'		DRAWN BY: JWB SHEET NO.: 1 OF 4	
PLOT DATE: 04-01-2015			



Hunt 3408 3-15H

Harper County

Unit Description:

All of 15-34S-8W

Surface Owner:

SandRidge Expl. and Prod., LLC

123 Robert S Kerr Ave

Oklahoma City, OK 73102

