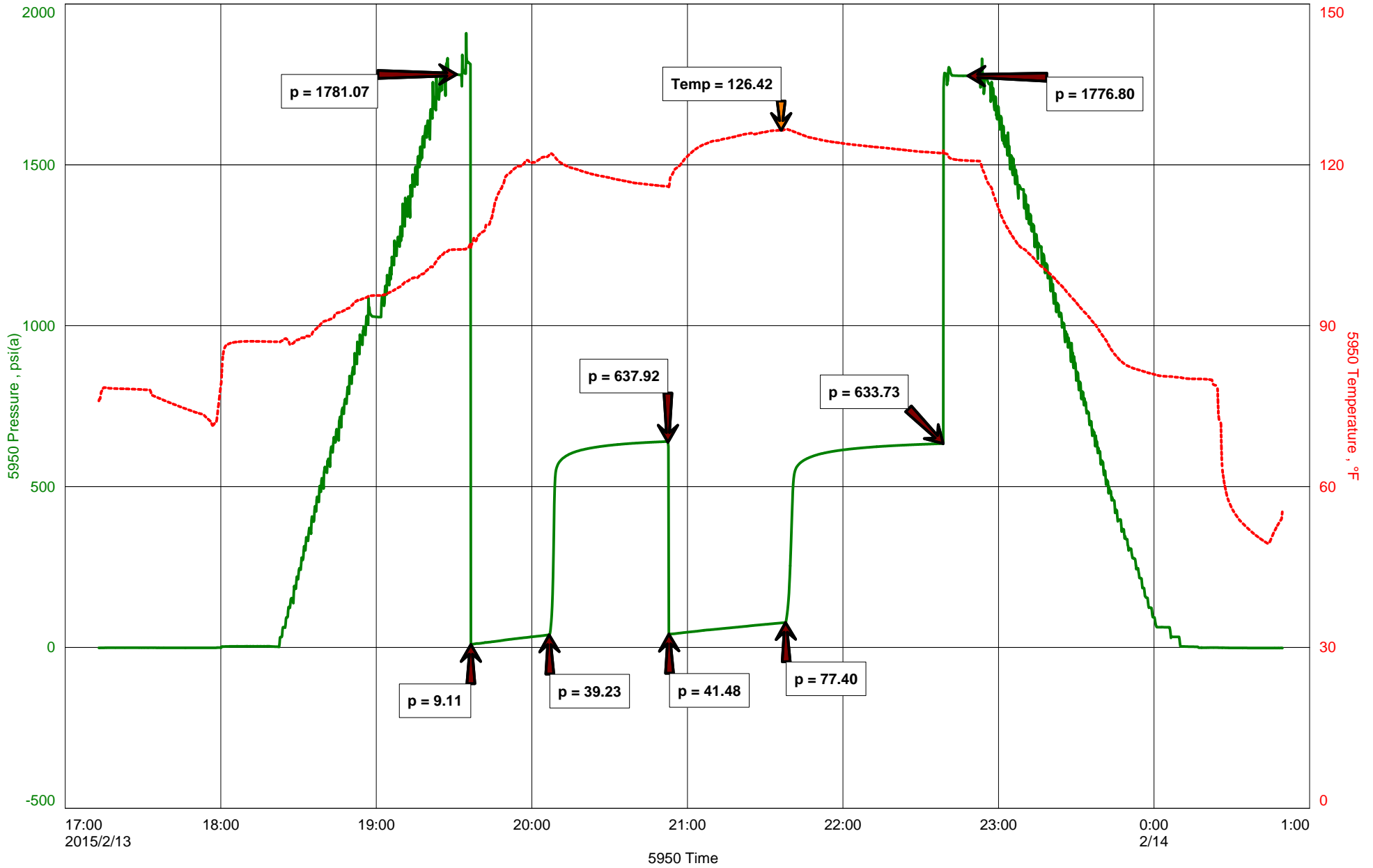


Darrel #3-31





Hoisington, Kansas

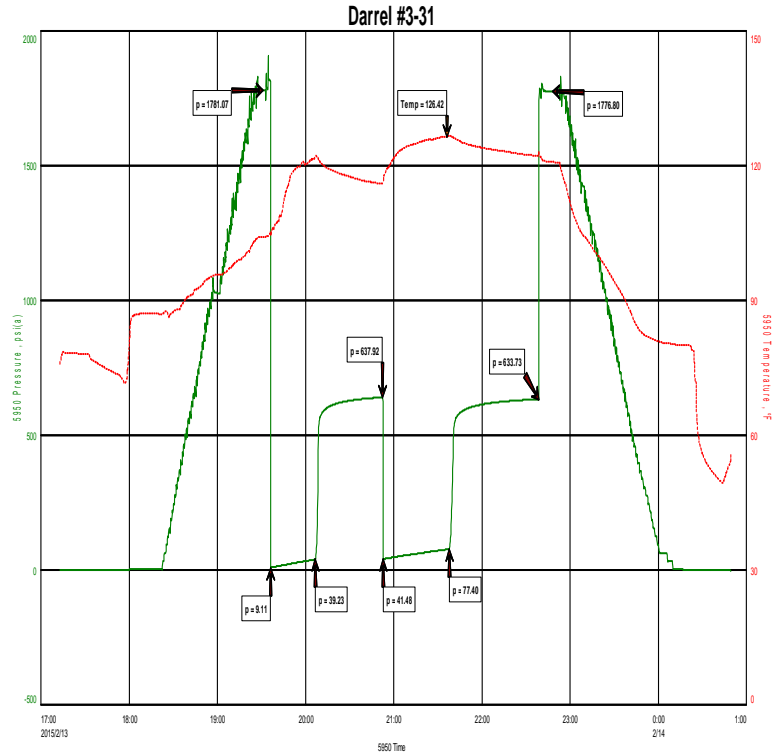
Michael Carroll
620-617-0368
carroll.dtlc@gmail.com

General Information

Company Name L.D. Drilling Inc

Contact	L.D. Davis
Well Name	Darrel #3-31
Unique Well ID	Dst #3 Lans D-E 3781-3830'
Surface Location	Sec31-14s-29w Gove County
Field	Lundgren
Well Type	Vertical
Test Type	Drill Stem Test
Well Operator	L.D. Drilling Inc

Formation	Dst #3 Lans D-E 3781-3830'
Well Fluid Type	01 Oil
Test Purpose	Initial Test
Start Test Date	2015/02/13
Start Test Time	17:13:00
Final Test Time	00:50:00
Job Number	P0050
Report Date	2015/02/13
Prepared By	Michael Carroll



TEST RECOVERY

Remarks Recovery:	20'	W	100%W		
	116'	SLOCMW	1%O	84%W	15%M
	10'	WM	35%W	65%M	

Total Fluid: 146'

Tool Sample: 10%O 62%W 28%M

RW .28 @ 54 Degrees
Chlorides 41000 PPM
PH 7



DIAMOND TESTING
P.O. Box 157
HOISINGTON, KANSAS 67544
(800) 542-7313
DRILL-STEM TEST TICKET
FILE: Darrel#3-31Dst#3

TIME ON: 1713 2-13
TIME OFF: 0050 2-14

Company L.D. Drilling Inc Lease & Well No. Darrel #3-31
Contractor L.D. Drilling Charge to L.D. Drilling Inc
Elevation 2699KB Formation Lans D-E Effective Pay _____ Ft. Ticket No. P0050
Date 2-13-15 Sec. 31 Twp. 14 S Range 29 W County Gove State KANSAS
Test Approved By Kim Shoemaker Diamond Representative Michael Carroll

Formation Test No. 3 Interval Tested from 3781 ft. to 3830 ft. Total Depth 3830 ft.
Packer Depth 3776 ft. Size 6 3/4 in. Packer depth _____ ft. Size 6 3/4 in.
Packer Depth 3781 ft. Size 6 3/4 in. Packer depth _____ ft. Size 6 3/4 in.

Depth of Selective Zone Set _____

Top Recorder Depth (Inside) 3766 ft. Recorder Number 5950 Cap. 5000 P.S.I.
Bottom Recorder Depth (Outside) 3818 ft. Recorder Number 30046 Cap. 6000 P.S.I.
Below Straddle Recorder Depth _____ ft. Recorder Number _____ Cap. _____ P.S.I.

Mud Type Chem Viscosity 56 Drill Collar Length 0 ft. I.D. 2 1/4 in.
Weight 9.1 Water Loss 7.2 cc. Weight Pipe Length 0 ft. I.D. 2 7/8 in.
Chlorides 2000 P.P.M. Drill Pipe Length 3753 ft. I.D. 3 1/2 in.
Jars: Make STERLING Serial Number na Test Tool Length 28 ft. Tool Size 3 1/2-IF in.
Did Well Flow? NO Reversed Out NO Anchor Length 49(17.5a) ft. Size 4 1/2-FH in.
Main Hole Size 7 7/8 Tool Joint Size 4 1/2 XH in. Surface Choke Size 1 in. Bottom Choke Size 5/8 in.

Blow: 1st Open: 1/4" BLOW-BUILT TO 5" IN 30 MINUTES **NOBB**
2nd Open: WSB-BUILT TO 5" IN 45 MINUTES **NOBB**

Recovered 20 ft. of WATER 100%W RW .28 @ 54 DEGREES
Recovered 116 ft. of SLOCMW 1%O 84%W 15%M CHLORIDES 41000 PPM
Recovered 10 ft. of WM 35%W 65%M PH 7
Recovered 146 ft. of TOTAL FLUID

Recovered _____ ft. of _____	Price Job
Recovered _____ ft. of _____	Other Charges
Remarks: _____	Insurance
TOOL SAMPLE: _____	Total

Time Set Packer(s) 7:35 P.M. A.M. P.M. Time Started Off Bottom 10:35 P.M. A.M. P.M. Maximum Temperature 126

Initial Hydrostatic Pressure..... (A) 1781 P.S.I.
Initial Flow Period..... Minutes 30 (B) 9 P.S.I. to (C) 39 P.S.I.
Initial Closed In Period..... Minutes 45 (D) 638 P.S.I.
Final Flow Period..... Minutes 45 (E) 41 P.S.I. to (F) 77 P.S.I.
Final Closed In Period..... Minutes 60 (G) 634 P.S.I.
Final Hydrostatic Pressure..... (H) 1777 P.S.I.

Diamond Testing shall not be liable for damages of any kind to the property or personnel of the one for whom a test is made or for any loss suffered or sustained, directly or indirectly, through the use of its equipment, or its statement or opinion concerning the result of any test. Tools lost or damaged in the hole shall be paid for at cost by the party for whom the test is made.