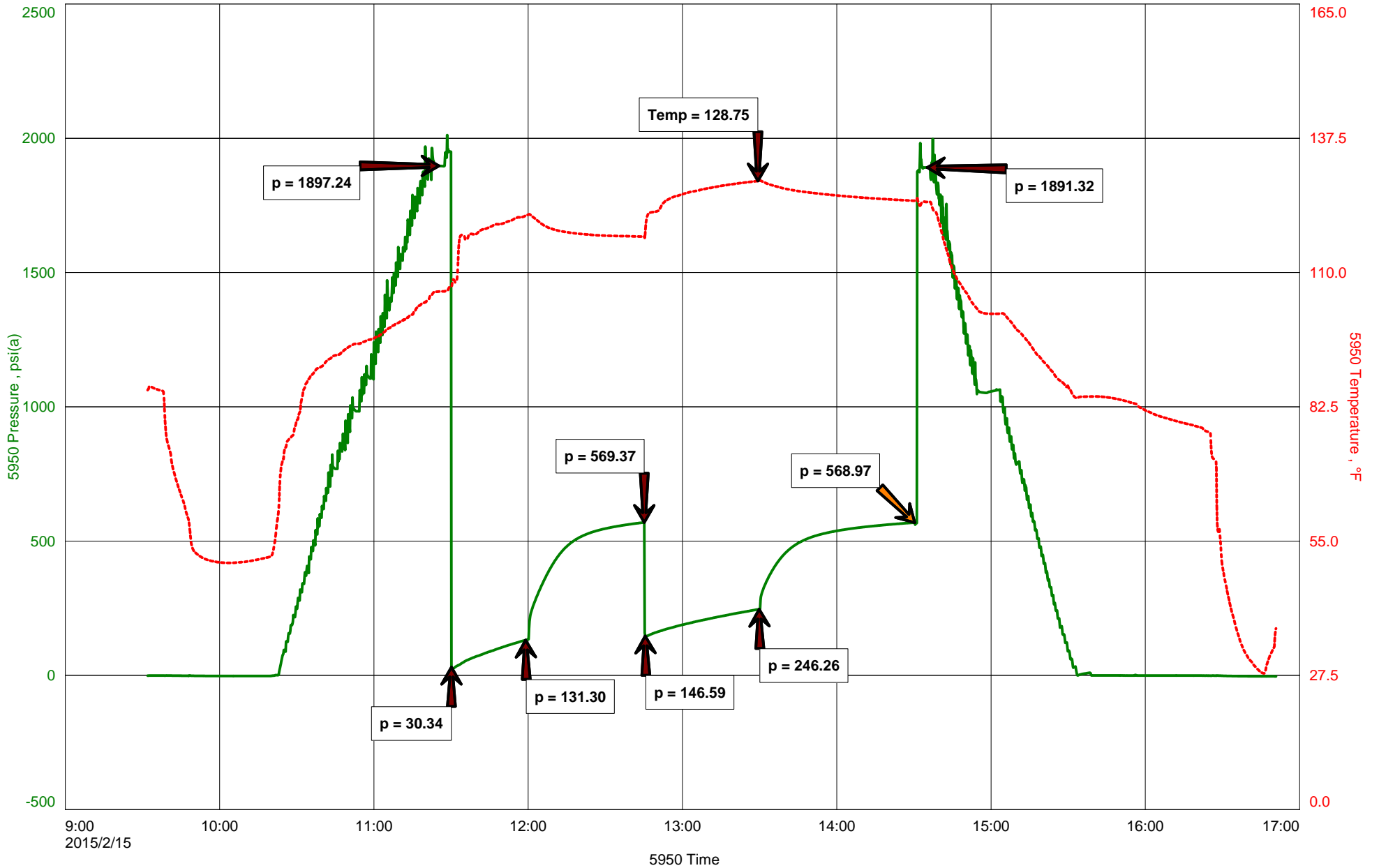


Darrel #3-31





Hoisington, Kansas

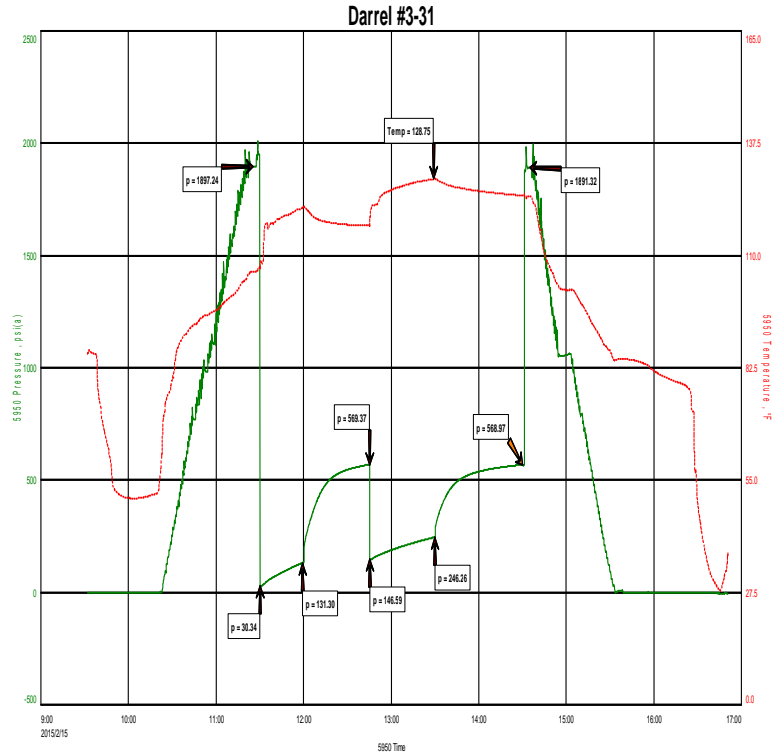
Michael Carroll
620-617-0368
carroll.dtlc@gmail.com

General Information

Company Name L.D. Drilling Inc

Contact L.D. Davis
Well Name Darrel #3-31
Unique Well ID Dst #5 Lans/KC K-L 3984-4035'
Surface Location Sec31-14s-29w Gove County
Field Lundrgen
Well Type Vertical
Test Type Drill Stem Test
Well Operator L.D. Drilling Inc

Formation Dst #5 Lans/KC K-L 3984-4035'
Well Fluid Type 01 Oil
Test Purpose Initial Test
Start Test Date 2015/02/15
Start Test Time 09:32:00
Final Test Time 16:50:00
Job Number P0052
Report Date 2015/02/15
Prepared By Michael Carroll



TEST RECOVERY

Remarks Recovery:	118'	Gas In Pipe			
	16'	Clean Oil	Gravity 36 @ 60 Degrees		
	212'	OCWM 3%O	42%W	55%M	
	95'	SLOCMW	2%O	63%W	35%M
	126'	VSLOCMW	1%O	77%W	22%M

Total Fluid: 449'

Tool Sample: 1%O 97%W 2%M

Chlorides 57000PPM
RW .24 @ 30 Degrees
PH 7



DIAMOND TESTING
P.O. Box 157
HOISINGTON, KANSAS 67544
(800) 542-7313
DRILL-STEM TEST TICKET
FILE: Darrel#3-31Dst#5

TIME ON: 0932
TIME OFF: 1650

Company L.D. Drilling Inc Lease & Well No. Darrel #3-31
Contractor L.D. Drilling Charge to L.D. Drilling Inc
Elevation 2699KB Formation _____ Lans/KC K-L Effective Pay _____ Ft. Ticket No. P0052
Date 2-15-15 Sec. 31 Twp. _____ 14 S Range _____ 29 W County _____ Gove State KANSAS
Test Approved By Kim Shoemaker Diamond Representative _____ Michael Carroll

Formation Test No. 5 Interval Tested from 3984 ft. to 4035 ft. Total Depth 4035 ft.
Packer Depth 3979 ft. Size 6 3/4 in. Packer depth _____ ft. Size 6 3/4 in.
Packer Depth 3984 ft. Size 6 3/4 in. Packer depth _____ ft. Size 6 3/4 in.

Depth of Selective Zone Set _____

Top Recorder Depth (Inside) 3969 ft. Recorder Number _____ 5950 Cap. _____ 5000 P.S.I.
Bottom Recorder Depth (Outside) 4021 ft. Recorder Number _____ 30046 Cap. _____ 6000 P.S.I.
Below Straddle Recorder Depth _____ ft. Recorder Number _____ Cap. _____ P.S.I.

Mud Type Chem Viscosity 50 Drill Collar Length _____ 0 ft. I.D. 2 1/4 in.
Weight 9.2 Water Loss 7.2 cc. Weight Pipe Length _____ 0 ft. I.D. 2 7/8 in.
Chlorides 3000 P.P.M. Drill Pipe Length 3956 ft. I.D. 3 1/2 in.
Jars: Make STERLING Serial Number na Test Tool Length 28 ft. Tool Size 3 1/2-IF in.
Did Well Flow? NO Reversed Out NO Anchor Length 51(19.5a) ft. Size 4 1/2-FH in.
Main Hole Size 7 7/8 Tool Joint Size 4 1/2 XH in. Surface Choke Size 1 in. Bottom Choke Size 5/8 in.

Blow: 1st Open: 1"BLOW-BUILT TO BOB IN 8 MINUTES 50 SECONDS 1/2"BB
2nd Open: 1"BLOW-BUILT TO BOB IN 12 MINUTES 15 SECONDS 3/4"BB

Recovered 118 ft. of GAS IN PIPE CHLORIDES 57000 PPM
Recovered 16 ft. of CLEAN OIL GRAVITY 36 @ 60 DEGREES RW .24 @ 30 DEGREES
Recovered 212 ft. of OCWM 3%O 42%W 55%M PH 7
Recovered 95 ft. of SLOCMW 2%O 63%W 35%M
Recovered 126 ft. of VSLOCMW 1%O 77%W 22%M
Recovered 449 ft. of TOTAL FLUID

Remarks: _____
TOOL SAMPLE: 1%O 97%W 2%M

Time Set Packer(s) 11:28A.M. A.M. P.M. Time Started Off Bottom 2:28P.M. A.M. P.M. Maximum Temperature 129

Initial Hydrostatic Pressure..... (A) 1897 P.S.I.
Initial Flow Period..... Minutes 30 (B) 30 P.S.I. to (C) 131 P.S.I.
Initial Closed In Period..... Minutes 45 (D) 569 P.S.I.
Final Flow Period..... Minutes 45 (E) 147 P.S.I. to (F) 246 P.S.I.
Final Closed In Period..... Minutes 60 (G) 569 P.S.I.
Final Hydrostatic Pressure..... (H) 1891 P.S.I.

Diamond Testing shall not be liable for damages of any kind to the property or personnel of the one for whom a test is made or for any loss suffered or sustained, directly or indirectly, through the use of its equipment, or its statement or opinion concerning the result of any test. Tools lost or damaged in the hole shall be paid for at cost by the party for whom the test is made.