

# KIM B. SHOEMAKER

CONSULTING GEOLOGIST

316-684-9709 \* WICHITA, KS

## GEOLOGIST'S REPORT

DRILLING TIME AND SAMPLE LOG

COMPANY L. D. DRILLING, INC.

LEASE \* 3-31 DARREL

FIELD LUNDGREN

LOCATION 600' FSL & 1200' FWL

SEC 31 TWP 19s RGE 29w

COUNTY GOVE STATE KANSAS

CONTRACTOR L. D. DRILLING, INC.

SPUD 2-7-15 COMP 2-19-15

RTD 4462 LTD 4468

MUD UP 3414 TYPE MUD CHEMICAL

ELEVATIONS

KB 2699

DF \_\_\_\_\_

CL 2694

Measurements Are All From 2699 KB

CASING

SURFACE 8 5/8 @ 288'

PRODUCTION 5 1/2" @

ELECTRICAL SURVEYS

DUAL IND., DENS., N., MICRO

SAMPLES SAVED FROM 3500 TO 4462

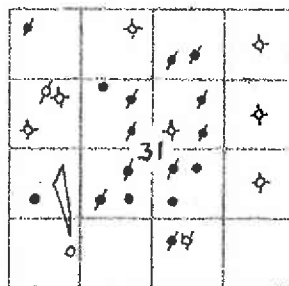
DRILLING TIME KEPT FROM 3200 TO 4462

SAMPLES EXAMINED FROM 3500 TO 4462

GEOLOGICAL SUPERVISION FROM 3600 TO 4462

GEOLOGIST ON WELL KIM B. SHOEMAKER

FORMATION TOPS	LOG	SAMPLES
ANHYDRITE	2098+601	2097+602
B/ANH.	2128+571	2128+571
STOTLER	3336-639	3332-633
HEEBNER	3708-1009	3702-1003
LANSING	3744-1045	3738-1039
STARK	3991-1292	3986-1287
MARMATON	4090-1391	4083-1384
FORT SCOTT	4244-1545	4236-1537
CHEROKEE	4272-1573	4264-1565
MISS. SPERGEN	4562-1663	4357-1668



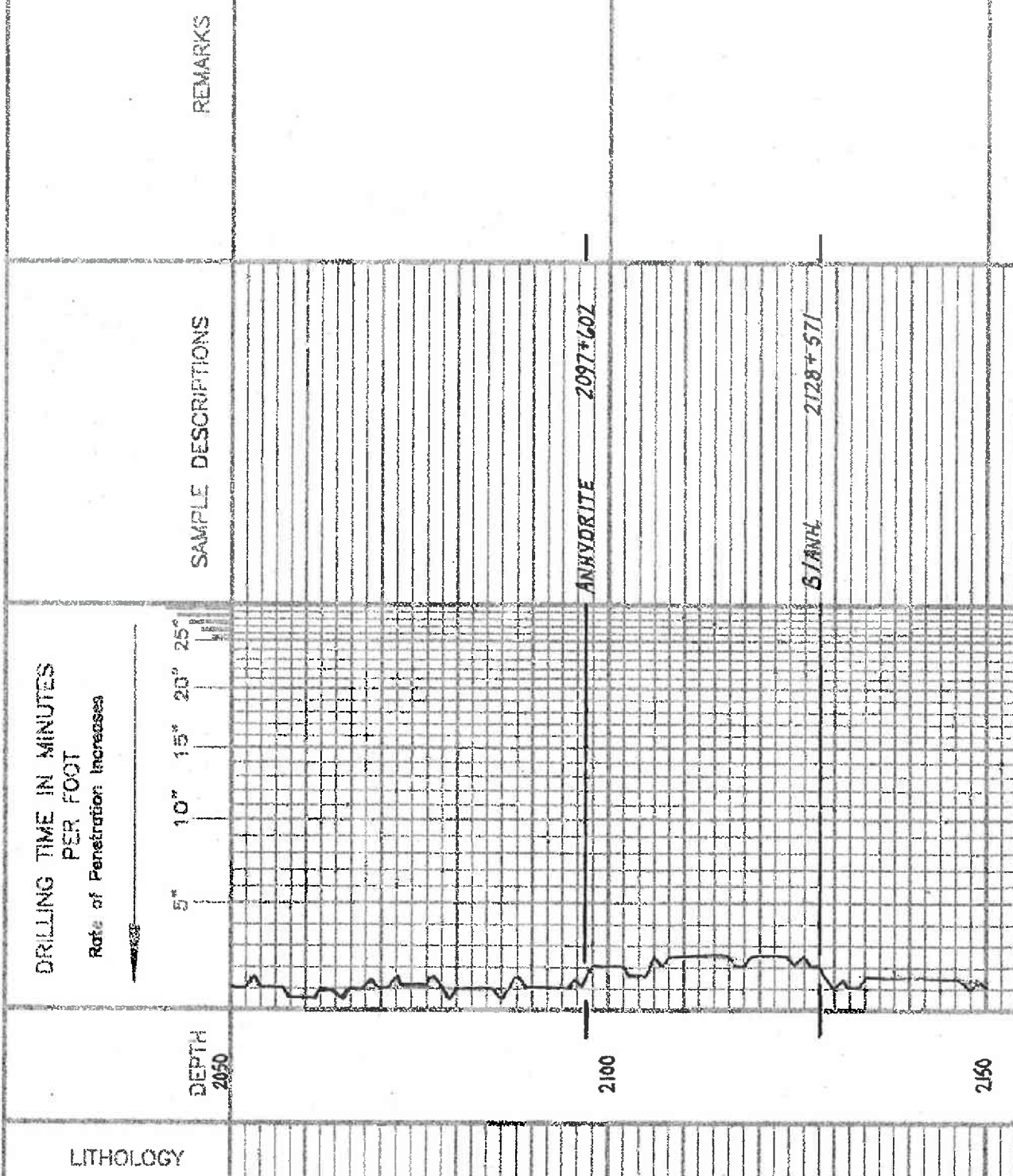
REMARKS  
 2-7-15 5800  
 2-8 @ 291'  
 2-9 @ 1630'  
 2-10 @ 2700'  
 2-11 @ 3350'  
 2-12 @ 3750'  
 2-13 @ 3780'  
 2-14 @ 3886'  
 2-15 @ 4035'  
 2-16 @ 4200'  
 2-17 @ 4330'  
 2-18 @ 4376'  
 2-19 @ 4462'

API: 15-063-22247

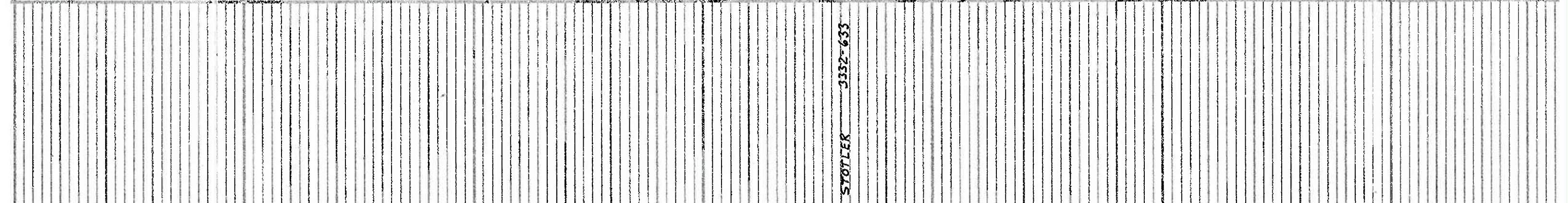
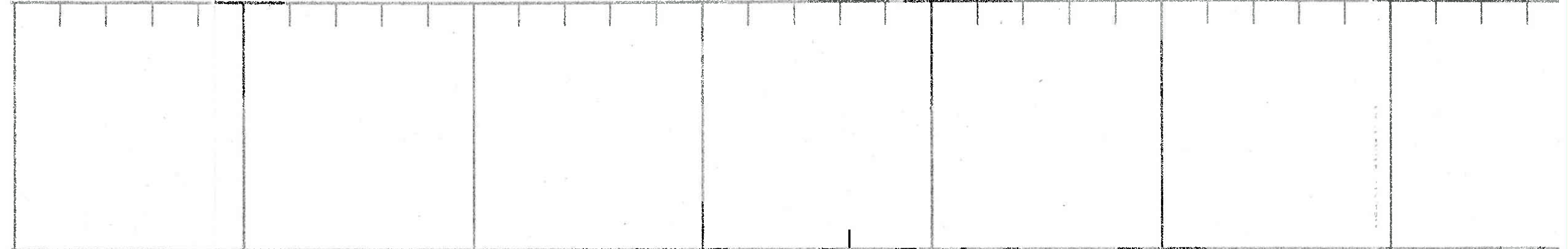
### LEGEND

- Anhydrite
- Salt
- Sandstone
- Shale
- Carb. sh.
- Limestone
- Ool. Lime
- Chert
- Dolomite

SHOED1-11







STOTLER 3352-633



MS: 03  
MT: 8.05  
ML: 8.0  
CL: 1600

2150

3200

3300

3400





3500

Samples are logged

LS. Tan. calc. lime.

Sh. gy silty

LS. Tan. calc. lime.

LS. calc. lime.

LS. Tan. calc. lime.

LS. gy. calc. lime.

LS. w. calc. lime.

Sh. gy.

LS. Tan. calc. lime.

Sh. gy.

LS. gy. calc. lime.

LS. Tan. calc. lime.

LS. Tan. calc. lime.

LS. Tan. calc. lime.

LS. gy. calc. lime.

HEERLE 3702-1003

DST (1) 3701-3750

1<sup>st</sup> OPEN: Blow built to 1' 11"

2<sup>nd</sup> OPEN: " " 1/4"

30-30-30-30

Rec. 10' Visocam (11.01.99/M)

FP: 8-11-17#

SIP: 900-846#

Temp. 112°F

LANSING 3738-1039

LS. Tan. calc. lime.

VIS: 46

WT: 91

WLL: 72

CHL: 900

VIS: 56

WT: 91

WLL: 72

CHL: 2000

TORONTO

3700

3800

DST (2) 3760-3780

1<sup>st</sup> OPEN: Blow built to 16 M.H.

2<sup>nd</sup> OPEN: " " 14"

30-45-45-60

Rec. 387 612

1' AWG (95/01 95/W)

78' 5MGWO (65/01 16/16 10/W 55/M)

48' 0GMW (107/01 50/W 407/M)

TF: 178

FP: 10-44

90-86 x

SIP: 634

Temp. 629°F

121°F

Tool Sample: 27-01-1987: Mud

DST (3) 3781-3830

1<sup>st</sup> OPEN: Blow built to 5' 11"

2<sup>nd</sup> OPEN: " " 5"

30-45-45-60

Rec. 20' W.H.

116' VSOCMW (11.01.87/L 151/M)

10' MW (35/W 55/M)

TF: 146'

30-45-45-60

Rec. 20' W.H.

116' VSOCMW (11.01.87/L 151/M)

10' MW (35/W 55/M)

TF: 146'

30-45-45-60

Rec. 20' W.H.

116' VSOCMW (11.01.87/L 151/M)

10' MW (35/W 55/M)

TF: 146'

RV: 28 @ 570'







